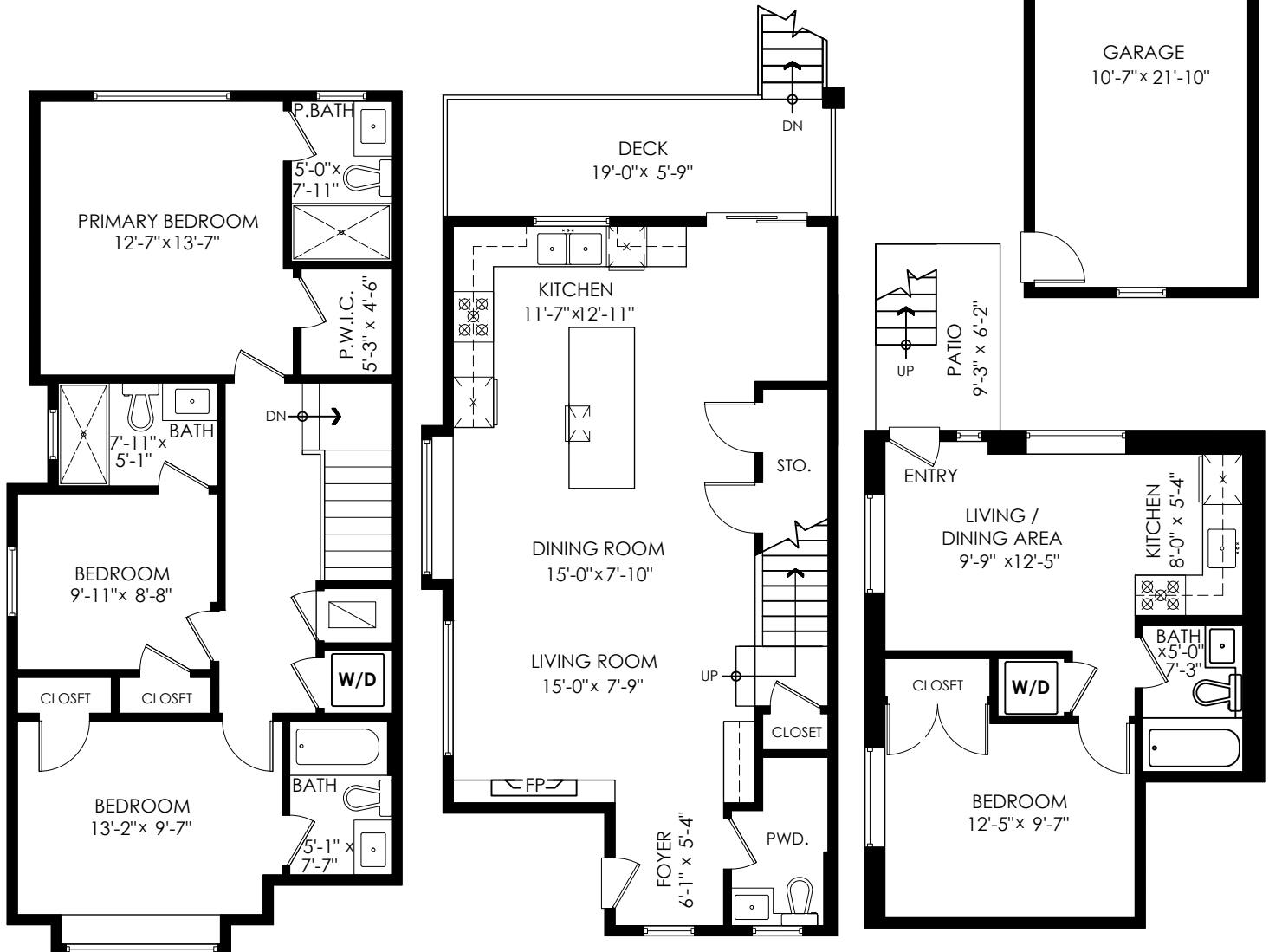


# 721 Renfrew St Vancouver



Main Floor: 642 sq.ft.  
 Upper Floor: 760 sq.ft.  
 Lower Floor: 436 sq.ft.  
**Total Livable: 1,838 sq.ft.**

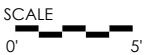
Detached Garage: 259 sq.ft.  
 Patio: 57 sq.ft.  
 Deck: 110 sq.ft.  
**Total Extras: 426 sq.ft.**



**Upper Floor Plan**  
 Floor Area: 760 sq.ft.  
 Ceiling Height: 9'

**Main Floor Plan**  
 Floor Area: 642 sq.ft.  
 Ceiling Height: 9'

**Lower Floor Plan**  
 Floor Area: 436 sq.ft.  
 Ceiling Height: 8'



E&O Insured. Total square foot calculated to gross unit area. SQFT based on interior measurements to exterior walls, not taken from original blueprints, may include unfinished area. This is for marketing purposes only and is not intended for architectural/construction use. All details, sizes & placements should be considered approximate within +/- 2% tolerance.

info@pixlworks.com www.pixlworks.com 604.329.5788



MEASURED ON: (2023-04-26)