



Pixel

perfectly positioned

Pixel

[HOME](#)

[LOCATION](#)

[INTERIOR](#)

[FLOORPLANS](#)

[TEAM](#)

[CONTACT](#)

[REGISTER](#)

**They call it the next
big neighbourhood.
You can call it home.**

Perfectly positioned between Metrotown and Edmonds, Pixel is your opportunity to live, play and invest in a growing neighbourhood that is quickly becoming the place to be in Burnaby.

This modern low-rise boasts affordable and stylish homes. With low maintenance fees, smart floor plans and in-suite guest/flex rooms, Pixel is truly designed for everyday living.

[Discover Pixel](#)

Features

Picture Perfect Location

- Centrally located between Metrotown and Highgate Village at Kingsway and Gilley
- Minutes from Royal Oak Skytrain Station and easily accessible without having to deal with a bridge or tunnel
- Over 400 options at Metropolis at Metrotown for shopping and entertainment including SilverCity Cineplex Theatres
- Savour highly-rated cuisine at restaurants from around the world at your doorstep
- Bonsor Recreation Centre with yoga, racquet sports and a drop-in gym is a quick jog away
- Major parks and greenspace within a 3 km radius and many outdoor options
- All the perks of the city with all the charm of a residential neighbourhood to the north

Modern Sense of Interior Space

- Modern architecture proudly presented by seasoned local development team, Thind Properties
- Elegant and inviting interiors meticulously designed by Port + Quarter
- Statement-making, extra-wide plank oak laminate flooring, polished chrome hardware and smart storage options reflect a sense of elevated style throughout
- Your choice of contemporary schemes (*Deer Lake* and *Highland Trail*) create the perfect balance of colour and texture
- Full-size washer and gas dryer
- Practical extras like under-sink pull-out components for garbage and recycling
- Linear panel, interior Berkley doors resist warping and shrinking
- Sleek roller shades throughout for natural light control
- Protected by 2-5-10 WBI Home Warranty
- All homes have 9' ceilings

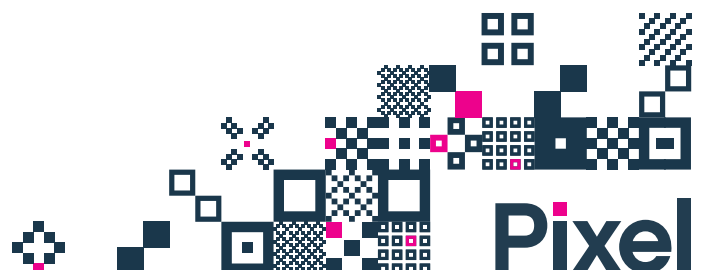
European-Inspired Kitchens

- Airy and functional kitchens with a deluxe Stainless Steel appliance package, engineered stone counters, and sleek European-inspired flat panel cabinetry
- Ample storage and cool flip-up appliance garages (most homes)
- Modern retro penny round ceramic backsplash adds a playfully understated charm
- Full-size, freestanding bottom freezer fridge and dishwasher by renowned European appliance manufacturer Blomberg
- Panasonic under counter microwave with Inverter™ Technology that perfects the art of cooking with the look and taste of conventional cooking
- Contemporary pyramid-style wall mount range hood fan from Venmar
- Professional-style 30" gas cooktop and 30" convection oven by Fulgor for your inner chef

Bathrooms that Shine

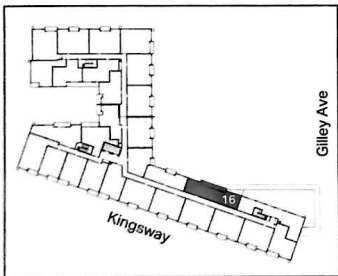
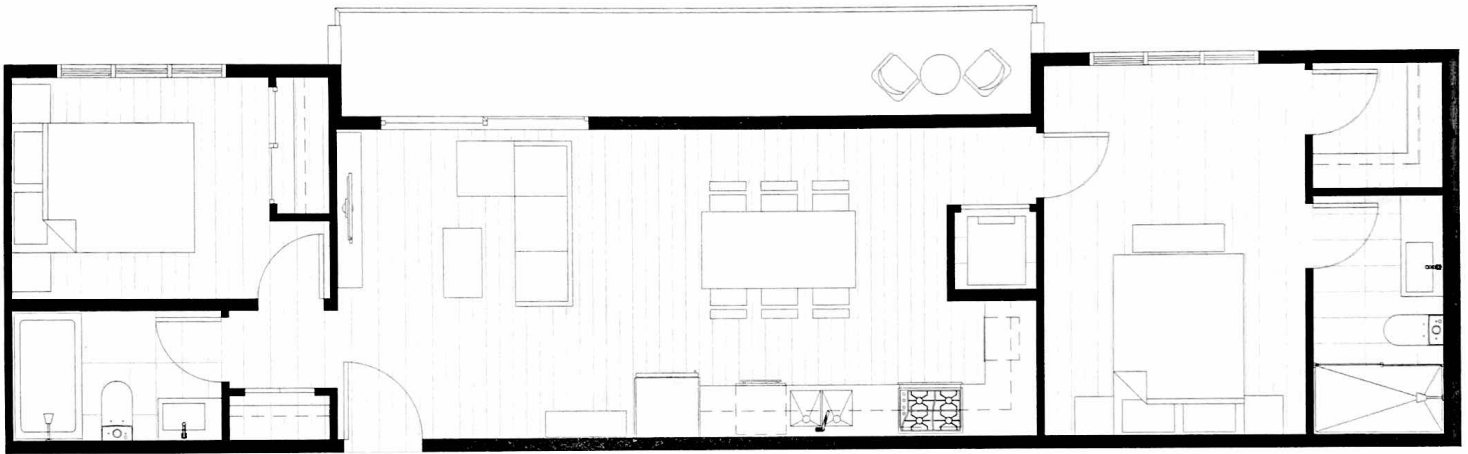
- Overflowing with clever details to create an oasis within your home
- Engineered stone countertops with square undermount sink that creates a luxe contemporary look
- Timeless double entry sliding glass shower doors from Kalia (for master ensuite only - bathtubs in all main bathrooms)
- Thoughtfully designed custom shelving provides additional storage and the perfect spaces for everyone's "stuff"
- Mirrors extend from sink to ceiling for appraising your daily attire
- Oversized and durable porcelain tiles on floors and showers/bathtubs

Developer reserves the right to make modifications to the floorplans, areas and/or specifications without notice. Actual floorplans may be mirror image or have minor variations. This is not an offering for purchase. Any such offering can only be made with a Disclosure Statement. E&OE



Plan H
2 Bed, 2 Bath

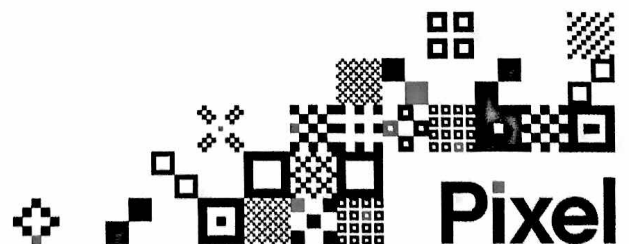
Interior: 761 sqft
Balcony: 106 sqft
Total: 867 sqft



Penthouse Floor



Developer reserves the right to make modifications to the floorplans, areas and/or specifications without notice. Actual floorplans may be mirror image or have minor variations from the illustration above. This is not an offering for purchase. Any such offering can only be made with a Disclosure Statement. E&OE





NEIGHBOURHOOD

365 days of the year, there's lots to do.

DINING, SHOPPING, CYCLING, STROLLING - NO MATTER WHAT YOUR INTERESTS ARE, THIS NEIGHBOURHOOD HAS SOMETHING FOR EVERYONE.

Grab a bite at one of the delicious restaurant options on Kingsway, indulge in some retail therapy at the hundreds of shops in Metropolis at Metrotown or catch a movie at SilverCity.

Looking for arts and culture? Enjoy a concert at Shadbolt Centre for the Arts or enroll in a sushi making class at the Nikkei National Museum and Cultural Centre.

For those who prefer the great outdoors, take a stroll at Deer Lake Park or bike along the Highland Park Line Trail.

If it's exercise you're after, Bonsor Recreation Complex and Edmonds Community Centre offer everything from swimming, to yoga, to racquet sports to a drop-in gym. If that doesn't tire you out, you can switch it up with zumba at Steve Nash Fitness World or pilates at YYoga. Then treat yourself by heading over to Highgate Village for some post-workout gelato or frozen yogurt, or both!



LOCATION

Everything within reach

Conveniently located on the corner of Kingsway and Gilley, Pixel allows you to enjoy all the perks of city living without all the congestion and traffic found in denser, busier areas. You're near the action, yet you're still surrounded by all the charm of Deer Lake Park.

Since Burnaby offers the largest amount of park space per resident in the Lower Mainland, you're surrounded by outdoor opportunities everyday.

17



MINUTE SKYTRAIN RIDE FROM ROYAL OAK STATION TO DOWNTOWN

10



MINUTE BUS RIDE TO EDMONDS SKYTRAIN STATION

1



MINUTE WALK TO WINDSOR ELEMENTARY AND 18 MINUTE WALK TO BURNABY SOUTH SECONDARY SCHOOL

42



RESTAURANTS WITHIN A 10 MINUTE WALK

2



MINUTE DRIVE TO SAVE-ON-FOODS

3



MINUTE DRIVE TO METROTOWN AND HIGHGATE VILLAGE SHOPPING CENTRES

6



MAJOR PARKS WITHIN A 3KM RADIUS

7



MINUTE WALK TO NIKKEI NATIONAL MUSEUM AND CULTURAL CENTRE

11

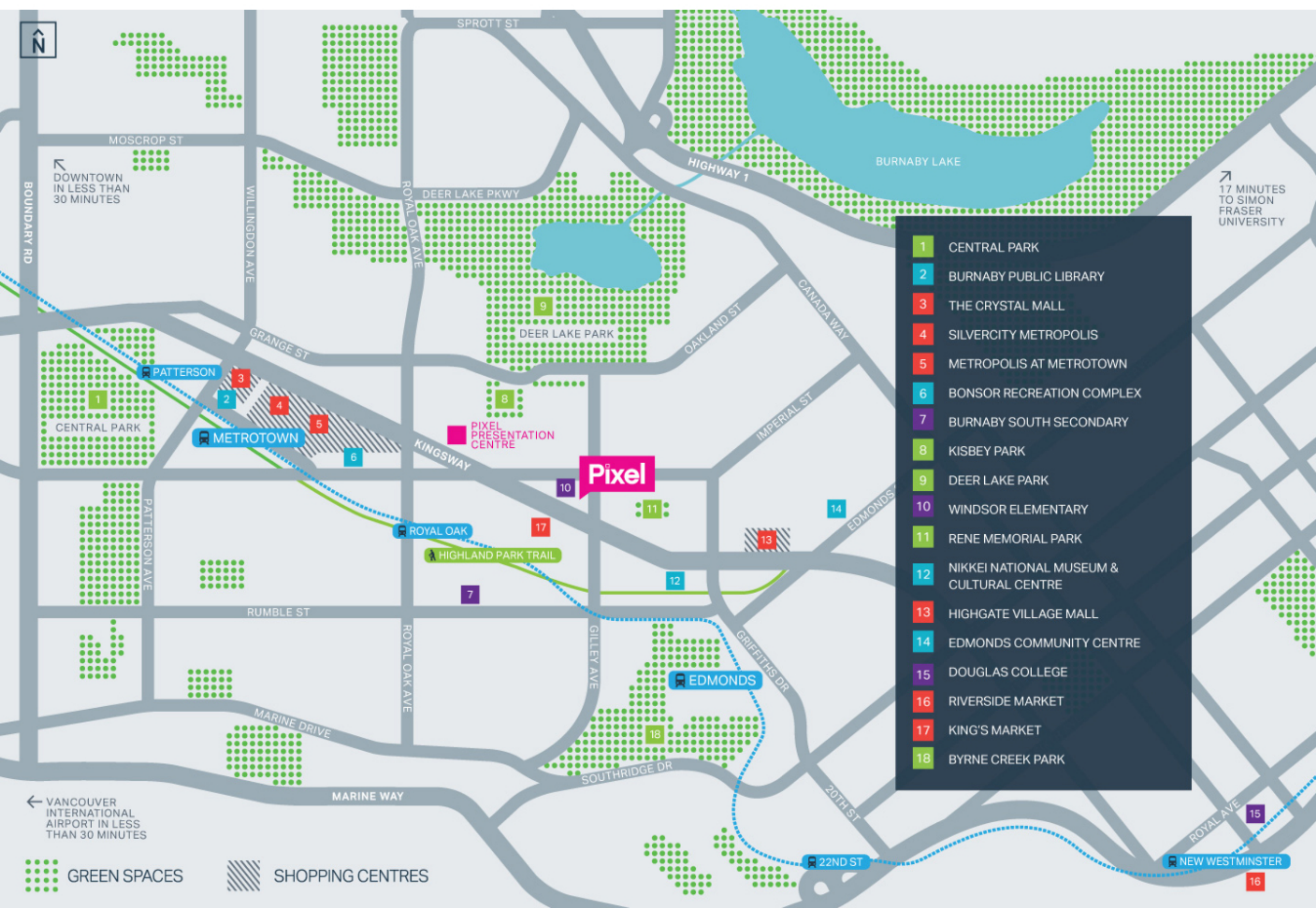


MINUTE DRIVE TO BURNABY HOSPITAL

9



MINUTE DRIVE TO HWY 1 ON-RAMP





INTERIORS

Smart design
for comfortable
living.

Expertly designed kitchens.

Custom-tailored by the experts at Port + Quarter, the kitchen features all of their favourite ideas. Enjoy ample storage and a secret appliance garage in most homes. No space is wasted, giving you all the room you need to store your cookbooks, spices and that shiny new blender.



A bathroom built on bright ideas.

With modern sinks and a deluxe vanity with custom shelving and increased storage, Pixel's bathrooms are full of clever details designed to make it your private oasis. Our master ensuites are fitted with showers, and there are bathtubs in all main bathrooms.

[View Features List](#)

Convenient amenities.

Your gym is just an elevator ride away. Pixel's fully-equipped fitness room has a wide range of equipment and strength training machines. The building also offers a lounge available for anything from strata meetings to birthday parties.





Proudly
Canadian.

DEVELOPER

Building Quality. Creating Value. Since 1996.

For 20 years, families have turned to THIND Properties Ltd. to experience the dream of new home ownership. Today, we are one of the leading new home builders with a reputation for providing architectural innovation, tremendous quality, superior customer service and quality warranties.

THIND delivers all aspects of the construction industry from carefully designing the plans to choosing the top staff to build the properties. We specialize in a wide range of projects from single family to custom builds to townhomes and condos. We began this company with a vision of building quality homes and creating value for our customers. Today, it is not only our vision, but it is the motto we stand by with the homes we build.



BUILDING QUALITY. CREATING VALUE.

PORT + QUARTER

INTERIOR DESIGN

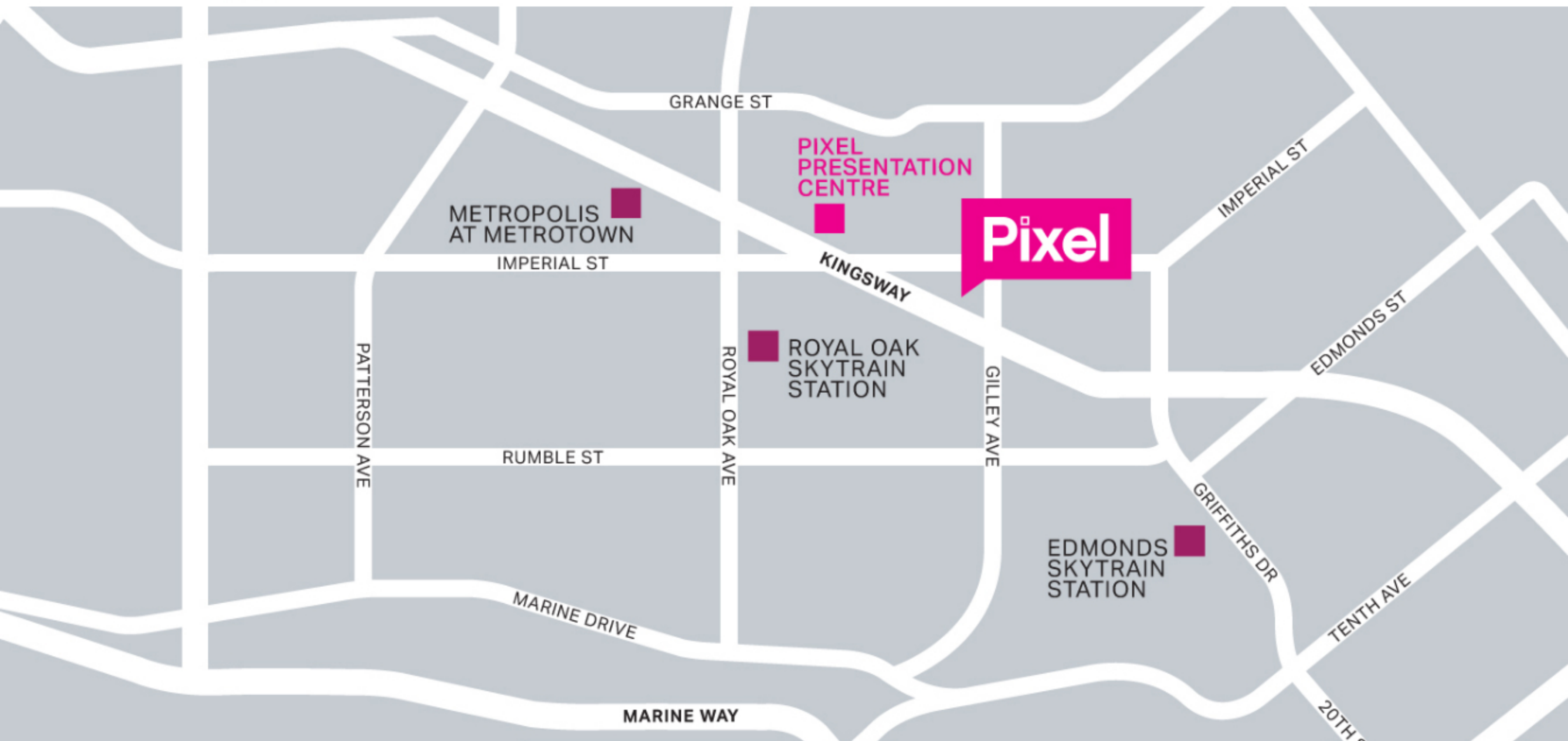
Port + Quarter is a full-service Interior Design company, specializing in custom-tailored interior spaces. From decoration and styling through to complete project development, Port + Quarter can deliver the unique character that you're looking for.

MARKETING

MAC Marketing Solutions is one of Western Canada's leading project marketing and sales organizations. With operations in Greater Vancouver and Calgary, MAC has transacted more than 12,000 new homes and \$4 billion in sales with an experienced and dedicated team of sales, marketing and administration professionals.



Marketing
Solutions



VISIT OUR PRESENTATION CENTRE

5549A Kingsway, Burnaby BC
Please call for a private appointment.

CONTACT US

info@pixelburnaby.com
604 435 8088

Be the first to know about the latest news and offers for Pixel.

[Register Now](#)



PHONE
(604) 435 8088

EMAIL
info@pixelburnaby.com

PRESENTATION CENTRE
5549A Kingsway, Burnaby, BC



THIND
PROPERTIES



Marketing
Solutions