



20 MINS DRIVE TO MOUNT SEYMOUR

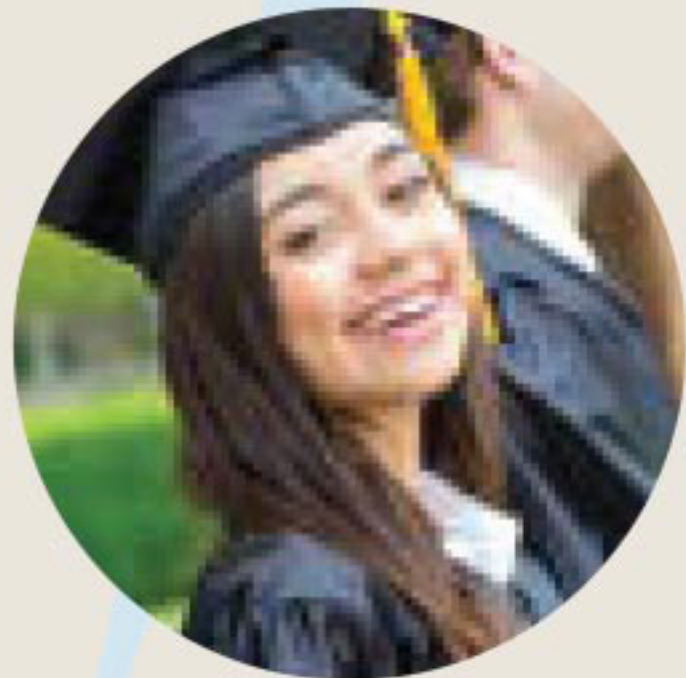
13 MINS DRIVE TO BADEN POWELL TRAIL



10 MINS DRIVE TO QUARRY ROCK TRAIL HEAD



16 MINS DRIVE TO LYNN CANYON



11 MINS DRIVE TO CAPILANO UNIVERSITY



17 MINS WALK TO PARKGATE COMMUNITY CENTRE & PUBLIC LIBRARY



10 MINS DRIVE TO DEEP COVE VILLAGE - HONEY DOUGHNUTS & GOODIES

10 MINS DRIVE TO NORTHLANDS GOLF COURSE



15 MINS WALK TO PARKGATE VILLAGE - SAFEWAY, SHOPPERS DRUG MART, BANKING

8 MINS DRIVE TO SEYCOVE SECONDARY SCHOOL

11 MINS DRIVE TO INTER RIVER PARK



MT SEYMOUR PKWY

9 MINS DRIVE TO RON ANDREWS COMMUNITY CENTRE AND CANLAN ICE SPORTS

15 MINS WALK TO GARIBALDI PARK



11 MINS WALK TO SEYMOUR GOLF & COUNTRY CLUB

7 MINS DRIVE TO THE RAVEN PUB

9 MINS DRIVE TO REAL CANADIAN SUPERSTORE

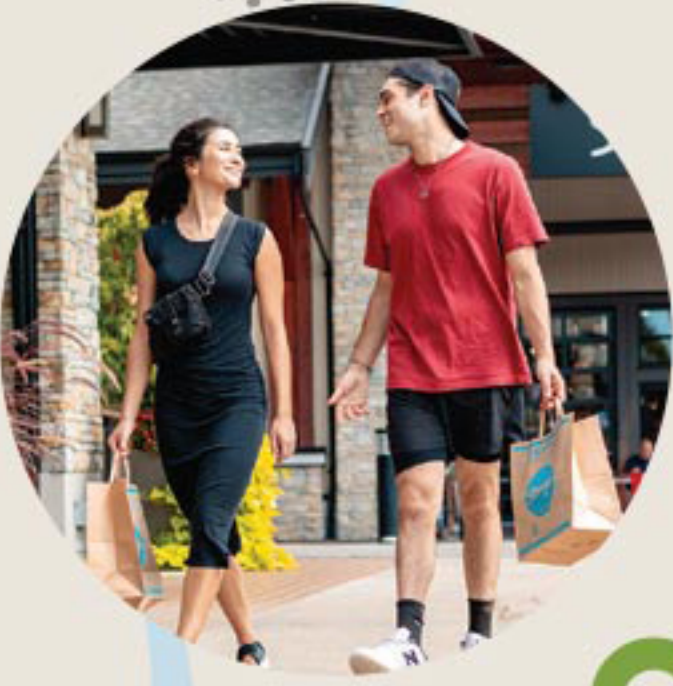
6 MINS DRIVE TO TSLEIL-WAUTUTH FAMILY AND CHILD CENTRE

3 MINS WALK TO THE PARK AT SEYMOUR VILLAGE



DOLLARTON HWY

HWY 1



6 MINS DRIVE TO THE MAPLEWOOD FLATS CONSERVATION AREA

15 MINS WALK TO SHERWOOD PARK ELEMENTARY

8 MINS DRIVE TO NORTHWOODS VILLAGE - STONG'S MARKET, COLONY, STARBUCKS & BUDDHA-FULL

6 MINS DRIVE TO DOLLARTON VILLAGE - NESTERS GROCERY STORE, JJ BEAN & BC LIQUOR STORES

20 MINS WALK TO WHEY-AH-WICHEN CATES PARK

BURRARD INLET



IRONWORKERS MEMORIAL BRIDGE



20 MINS TO VANCOUVER

EAT PLAY SHOP LEARN N