

SAVOY

AT QUEEN ELIZABETH PARK

SAVOY

AT QUEEN ELIZABETH PARK



**CENTRAL. VIBRANT.
PRESTIGIOUS WEST
SIDE ADDRESS.**

A boutique home in a desirable setting; close to the city, surrounded by green space. Savoy is a new level of luxurious, west side living.

A STRIKING STREETSIDE STATEMENT



A contemporary design by Rafii Architects in modernist style not seen along Cambie before. Savoy makes a striking streetside statement.



URBAN LUXURY MEETS PARKSIDE LIVING

The city, ocean, and mountains are to your north. Park space, shops at Oakridge, and the airport are to your south. Savoy gives you the best of both worlds: a central address in a serene parkside location. Pair a busy urban morning with a quiet meditative afternoon at the park. Slip into the city by Canada Line. Stroll to the world class aquatic facilities at Hillcrest Community Centre.



Enjoy the serene gardens at
Queen Elizabeth Park.



NEIGHBOURHOOD FEATURES

1 CAMBIE VILLAGE SHOPS & RESTAURANTS

SORELLA RESTAURANT
VIJ'S RESTAURANT
SHIRO JAPANESE
LEMONADE BAKERY
WALRUS DESIGN
BIERCRAFT CAMBIE

2 HILLCREST PARK & AREA

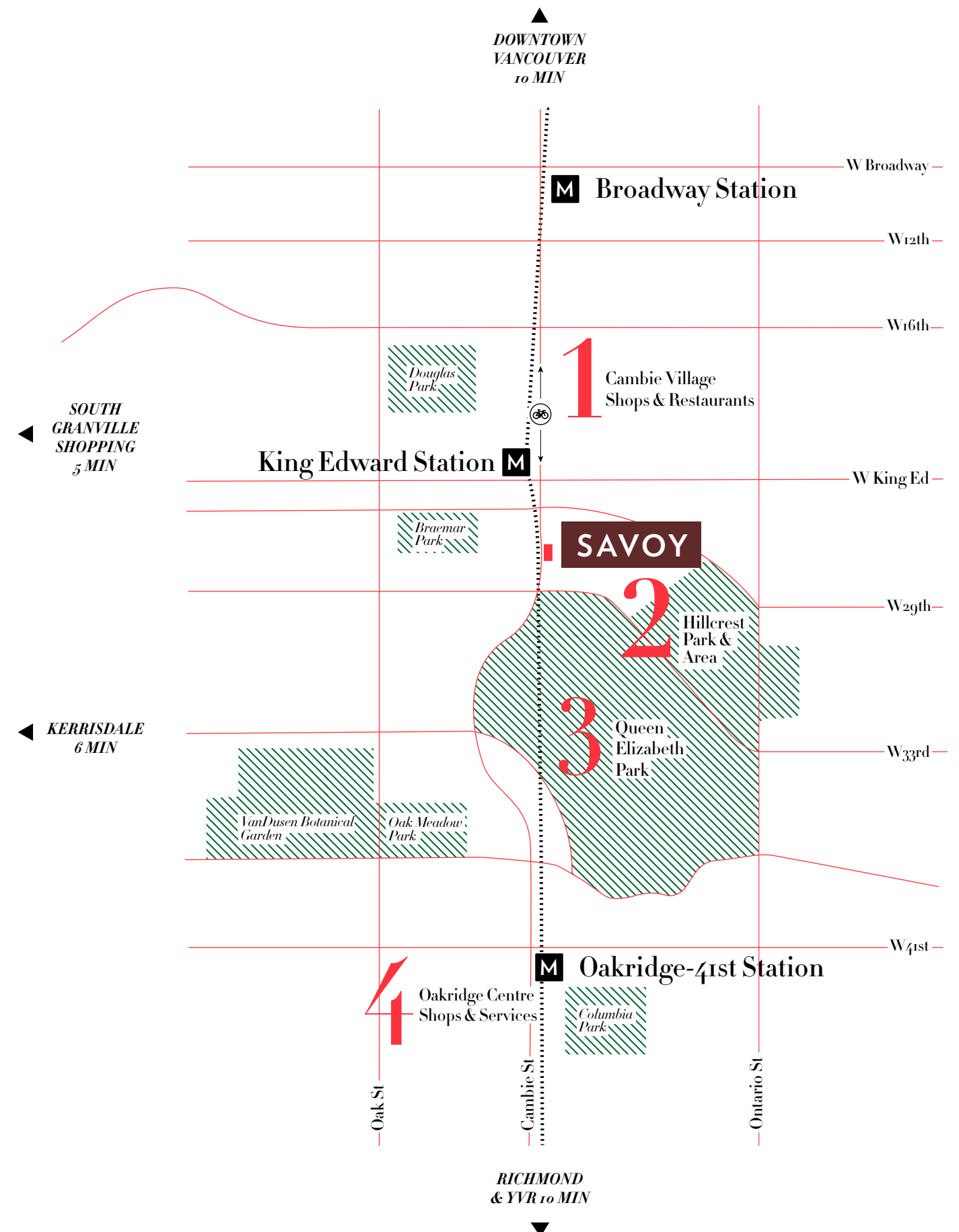
HILLCREST FITNESS CENTRE
HILLCREST AQUATIC CENTRE
HILLCREST ICE SKATING RINK
NAT BAILEY STADIUM
RILEY PARK

3 QUEEN ELIZABETH PARK

BLOEDEL FLORAL CONSERVATORY
SEASONS IN THE PARK RESTAURANT
LAWN BOWLING CLUB
QUARRY GARDENS
TENNIS COURTS
ROSE GARDEN

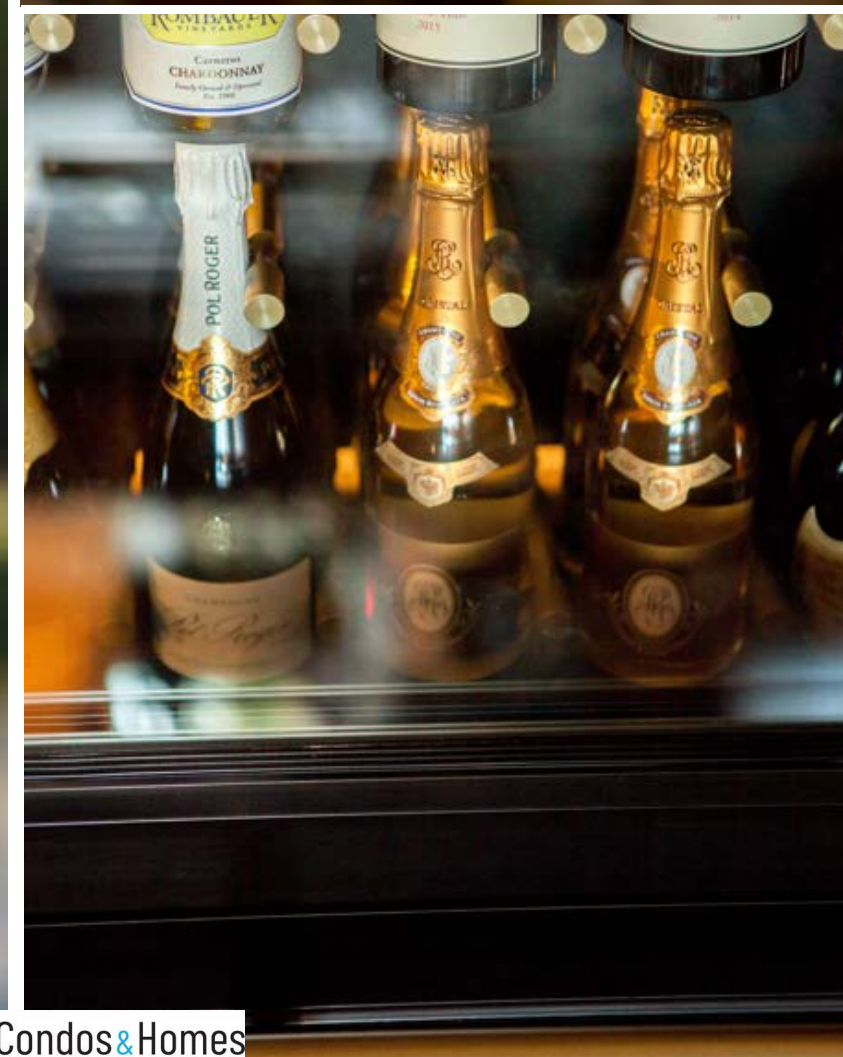
4 OAKRIDGE CENTRE SHOPS & SERVICES

OAKRIDGE CENTRE RE-DEVELOPMENT
COMING SOON



CITY AND PARK AT YOUR DOOR

Located just steps to Savoy's south, Queen Elizabeth Park is a 52 hectare greenspace at Vancouver's geographic centre. The park is a horticultural jewel and as the city's highest point offers spectacular vistas. To Savoy's north lies Cambie Village located along one of Vancouver's most prestigious heritage boulevards. The Village offers eighteen blocks of shopping, restaurants and design-forward stops for a quick latté or a glass of Champagne.



NESTLED IN THE PRESTIGIOUS QUEEN ELIZABETH PARK ENCLAVE



ILLUSTRATION IS AN ARTISTIC REPRESENTATION ONLY. SUBJECT TO CHANGE.

With 128 acres to explore at your doorstep, there's always
another quiet corner of the park to discover.



SAVOY

A WARM
WELCOME HOME

ILLUSTRATION IS AN ARTISTIC REPRESENTATION ONLY. SUBJECT TO CHANGE.



AN INTIMATE COLLECTION OF LUXURY HOMES

Savoy offers a boutique collection of grand, yet intimate, residences in urban-1, 1, 2 or 3 bedroom, and townhome layouts. Its compelling six storey, concrete design provides a strong, but cultured, urban statement at street level that gives way to subtle sophistication once inside.

Ground-level townhomes feature walk-out patios and garden areas.

ILLUSTRATION IS AN ARTISTIC REPRESENTATION ONLY. SUBJECT TO CHANGE.



SAVOY KITCHEN

Savoy's kitchens are grand, expansive spaces created to satisfy design-lovers as much as food-lovers. Stacked wall ovens and oversized islands make hosting easy while underlit cabinets add a little extra drama to the space. Striking appliances from Miele are modern, beautiful and elegantly functional.

Choose from light or dark
colour schemes.



SAVOY KITCHEN

Dark colour scheme.

ILLUSTRATION IS AN ARTISTIC REPRESENTATION ONLY. SUBJECT TO CHANGE.



FINE DINING AT HOME

Tall ceilings and wide plank flooring frame the very picture of luxurious living. Thoughtfully placed windows provide accent lighting and endless views to Queen Elizabeth Park, Mount Baker, and beyond. The elegant dining area with modern fixtures flows effortlessly to a spacious living area cooled comfortably by air conditioning for hot summer days.

Savour the views;
day and night.



LUXURIOUS LIVING SPACE

Relax in a comfortable,
spacious grandeur.

ILLUSTRATION IS AN ARTISTIC REPRESENTATION ONLY. SUBJECT TO CHANGE.



The image shows a luxurious rooftop terrace. In the foreground, there is a large, grey sectional sofa with yellow and white throw pillows. A low wooden coffee table sits in front of it. To the right, a wooden dining table is set with plates, glasses, and a bottle of wine, surrounded by white chairs. A man and a woman are standing near a glass railing, looking out over a cityscape and mountains. The terrace is decorated with potted plants and a large white umbrella. The sky is blue with some clouds.

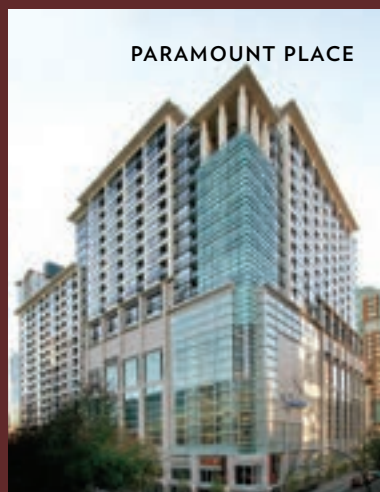
ELEVATED AMENITIES FOR A LUXURIOUS LIFE.

The polished appeal of Savoy is further enhanced by its luxurious amenities. A well-appointed, private gym offers exclusive access to Savoy residents. The spacious rooftop deck provides ample room for entertaining outdoors, or a place to enjoy beautiful view after a workout.

ILLUSTRATION IS AN ARTISTIC REPRESENTATION ONLY. SUBJECT TO CHANGE.



ONE BURRARD PLACE



PARAMOUNT PLACE



DOMUS



1356 CAMMERAY RD.



WOODWARD'S

THE TEAM

Savoy brings together the diverse experience and skill sets of three accomplished partners Aria Pacific, ITC Group and Rafii Architects to conceptualize, design and build this new statement residence. The team brings a deep background in both single and multi-family luxury residential developments in West Vancouver, Vancouver, across BC and beyond. Savoy's intimate collection of luxury homes are a showcase of the unparalleled attention to detail and refined execution that are the hallmarks of these three partners.



