

Welcome to ELEMENS in Burnaby

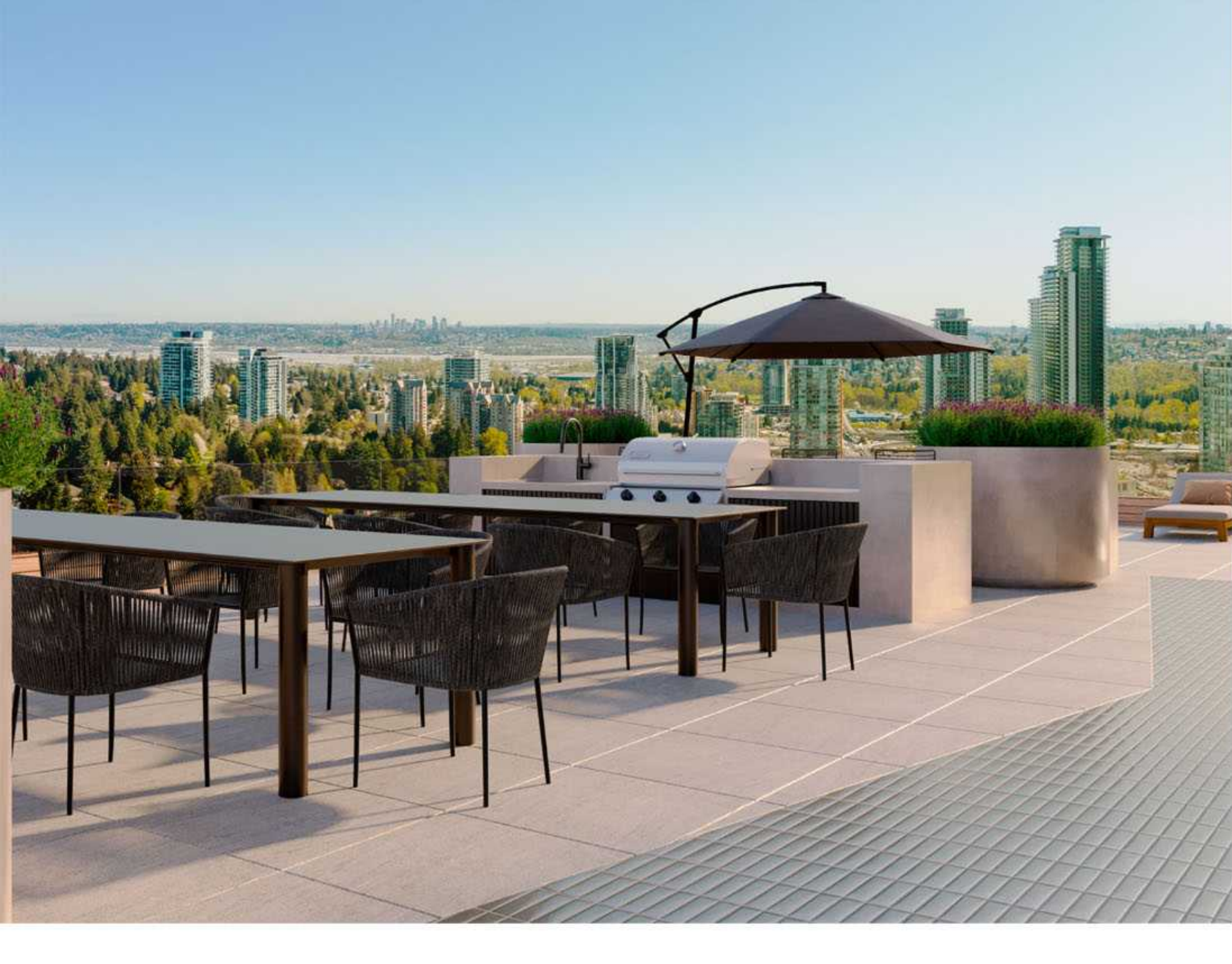
European Refinement. Burnaby Living.

ELEMENS, our latest condo development, brings sophisticated European-inspired living into one of Greater Vancouver's most exciting neighborhoods. Every detail here is meticulously crafted to create a new standard of living.

[Book an appointment](#)
[Explore More](#)


Prime Location, Vibrant Community

ELEMENS, tucked in the heart of the buzzing community and strategically located amidst Burnaby, West Coquitlam, and Surrey, offers effortless access to a friendly neighborhood, prime city views, exciting multicultural vibes, retail spaces, and vibrant businesses.

[Neighbourhood](#)


A Harmonious Lifestyle

Every detail at ELEMENS has been finely tuned to achieve the perfect harmony of form and function. Immerse yourself in the curated selection of amenities and serene outdoor spaces for a truly harmonious living experience. All homes at ELEMENS include modern ACs, smart inductive stovetops, luxurious detailing, and access to on-premises entertainment facilities.

[Explore More](#)


A Work of European Elegance

ELEMENS welcomes you to a world of unrivaled beauty and elegance. Every detail here is a masterpiece of craftsmanship. Wood and tile floors, modern lighting fixtures, abundant natural lighting, and dramatic overhanging balconies welcome residents into a world apart from the ordinary. Our dedication to perfection elevates your living experience to one of refined elegance.

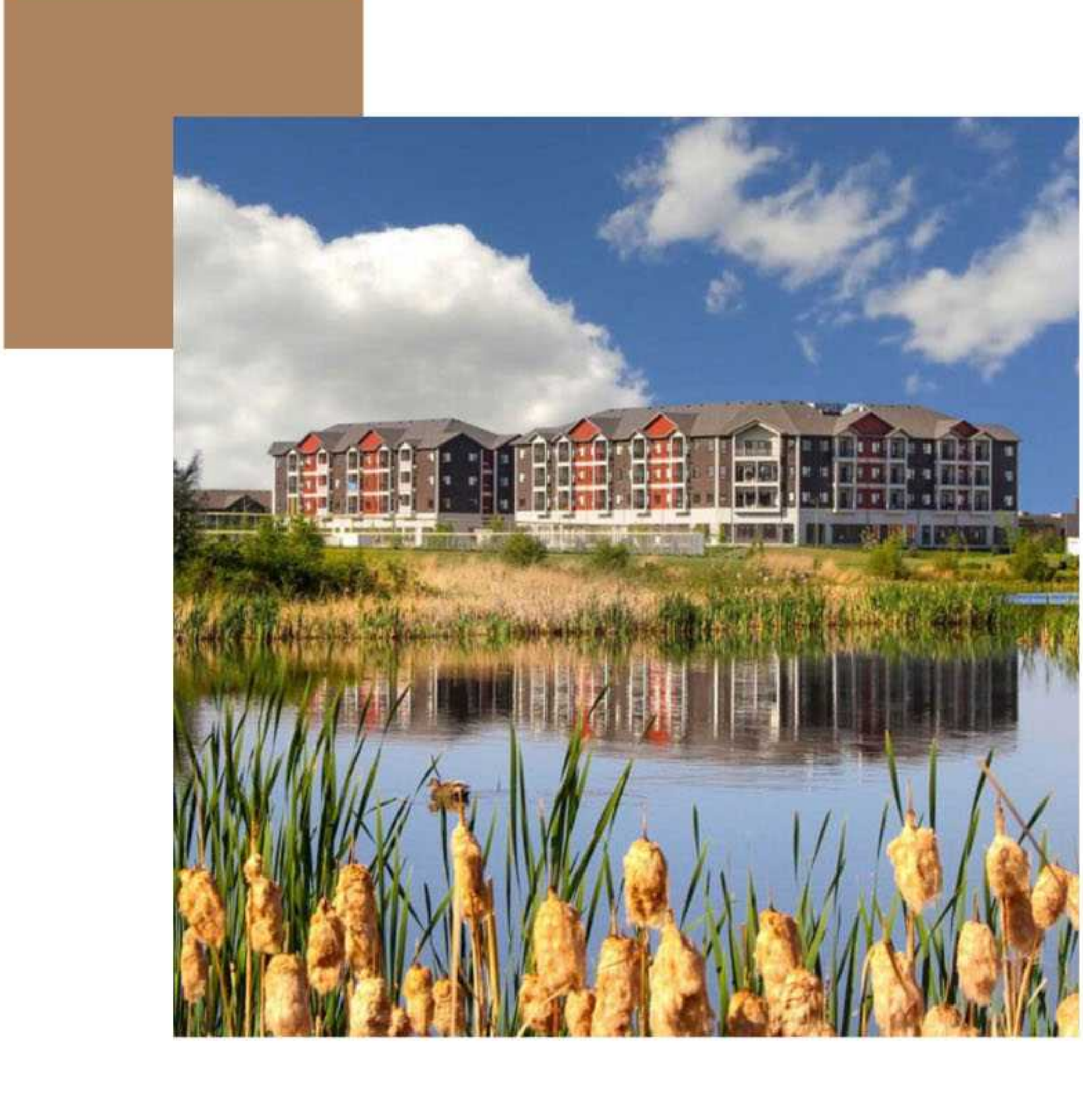
[Explore More](#)


Units are selling fast! Secure your favorite floors & layouts before they are gone!

[Register](#)


The Partnership Behind ELEMENS

ELEMENS is a masterpiece of modern living by two of Canada's most respected real estate developers, Baydo Group (BG) and Pacific Property Group (PPG). They've come together to create the ultimate living experience, where every masterfully crafted detail exceeds set new expectations about the meaning of luxury. They're backed by some of the most trusted accredited financial institutions, ensuring the successful completion of the project.



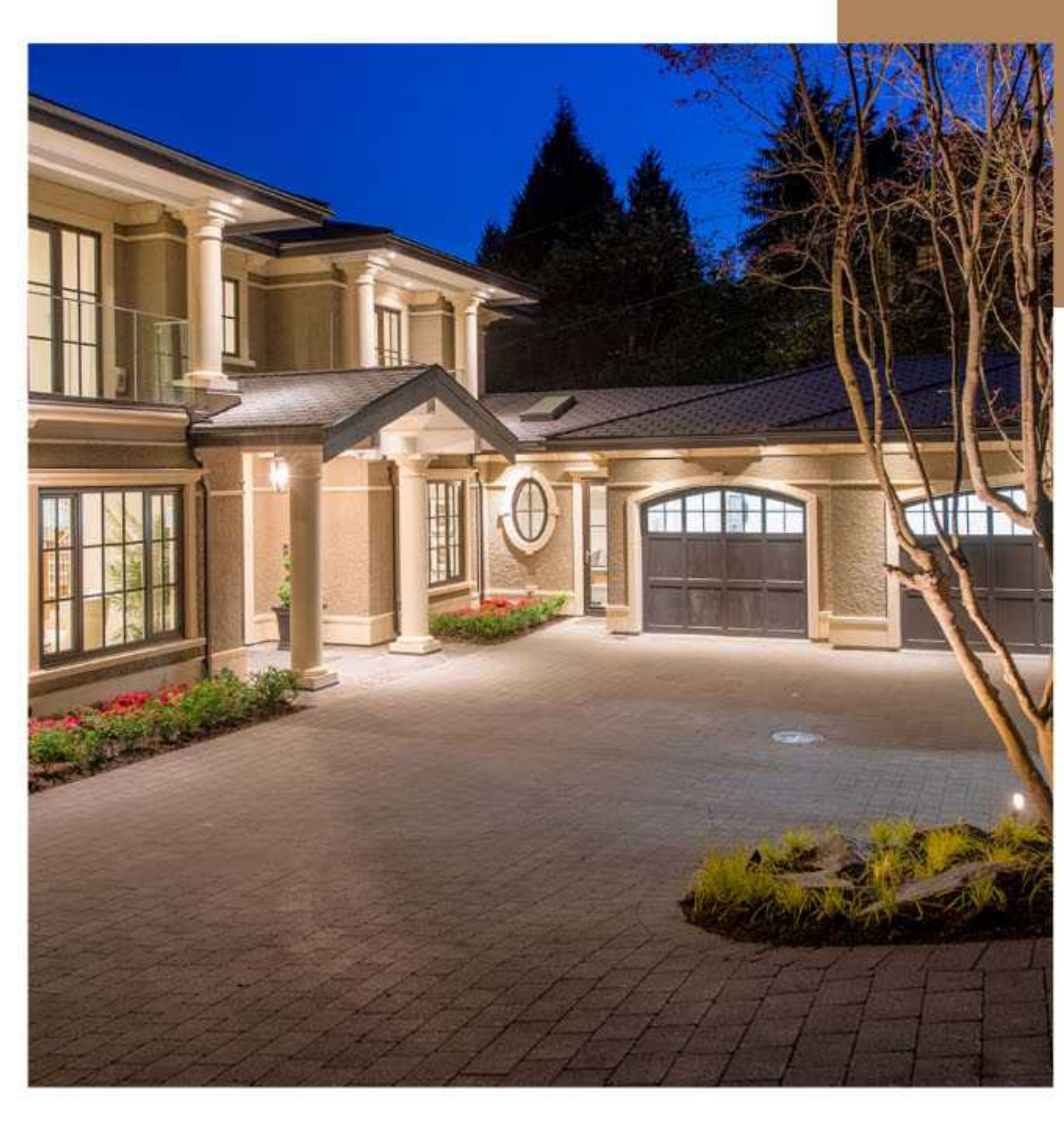
Baydo Group (BG)

Baydo Group is an award-winning real estate developer based in Western Canada and Ontario. They specialize in designing, developing, constructing, and holding elegant, sophisticated rental properties. Their skilled team of Canadian professional engineers allows them to acquire top land and projects. Baydo's experienced construction division provides exceptional living experiences while maximizing returns.

[Learn More](#)

Pacific Property Group (PPG)

Pacific Property Group (PPG) is a Georgie and Ovation award-winning real estate development firm in British Columbia, Canada. The company has over 60 years of combined construction experience in luxury residential, multi-family, and commercial development projects. PPG oversees every aspect of the development process, from land assembly and rezoning to pre-construction, construction, and marketing.

[Learn More](#)


Construction in Motion

Lock in your purchase now as we enter the final stages of construction. Get the latest updates as we move closer to completion!

[Watch US Rise](#)

Living in West Coquitlam

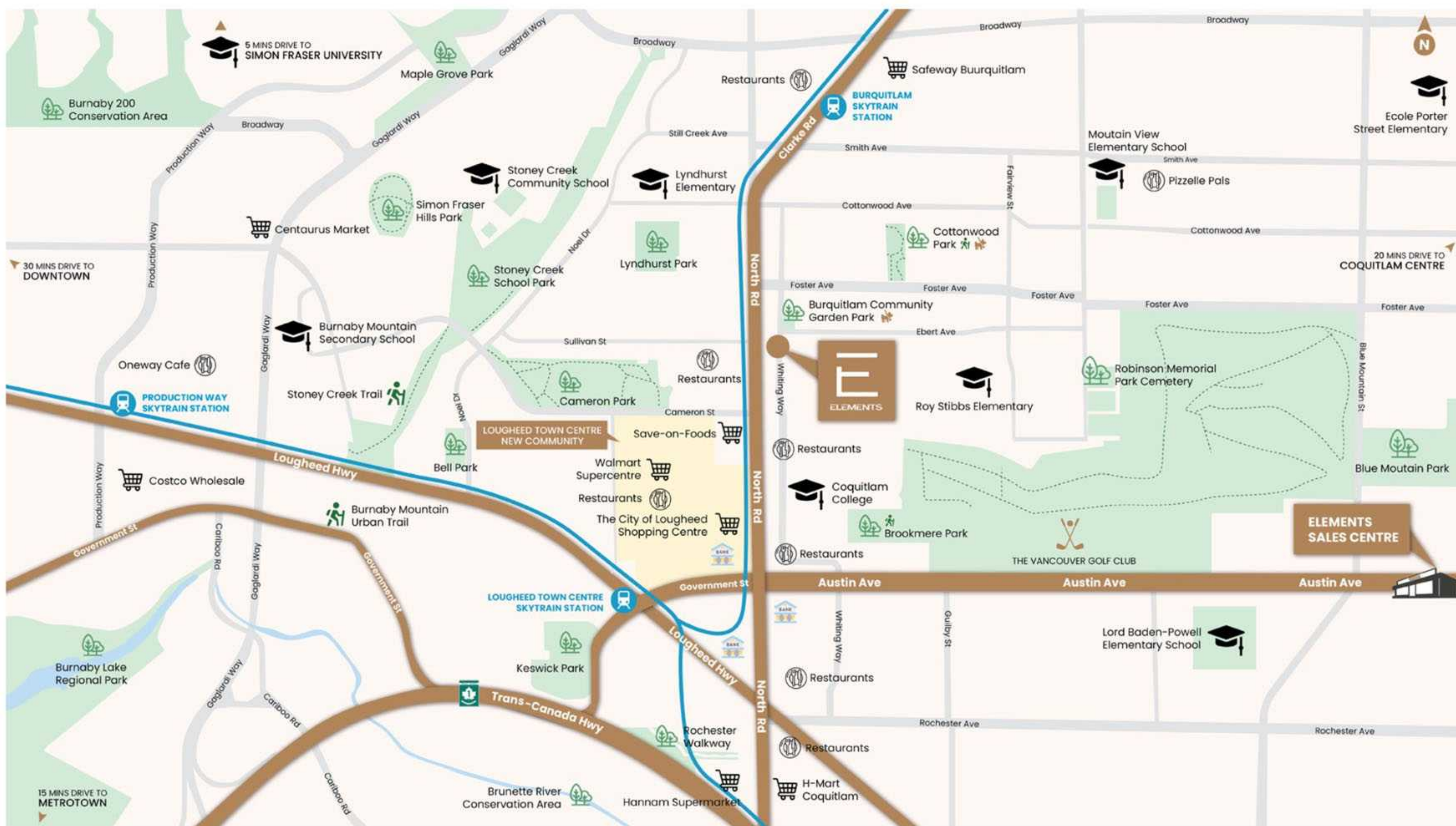
Explore all that life at ELEMENTS offers residents in one of B.C.'s most exciting communities.

[Book an appointment](#)

Unlimited Connections

ELEMENTS offers easy access to the entire Lower Mainland. Commuting to Vancouver Downtown, visiting family in the East, or exploring premier destinations in the city from ELEMENTS is easy. ELEMENTS is near a major stop on the Millennium and Expo SkyTrain Lines and just minutes from Highways 1 and 7.

- 🚗 To Brentwood: 25 minutes
- 🚗 To Metrotown: 35 minutes
- 🚗 To Vancouver Downtown: 55 minutes
- 🚗 To Vancouver International Airport (YVR): 75 minutes



Endless Discoveries

Immerse yourself in a vibrant urban center through ELEMENTS. Residents can enjoy various restaurants, fashion outlets, grocery stores, and entertainment venues steps from home. Schools and healthcare facilities are close, making this a place everyone can enjoy.

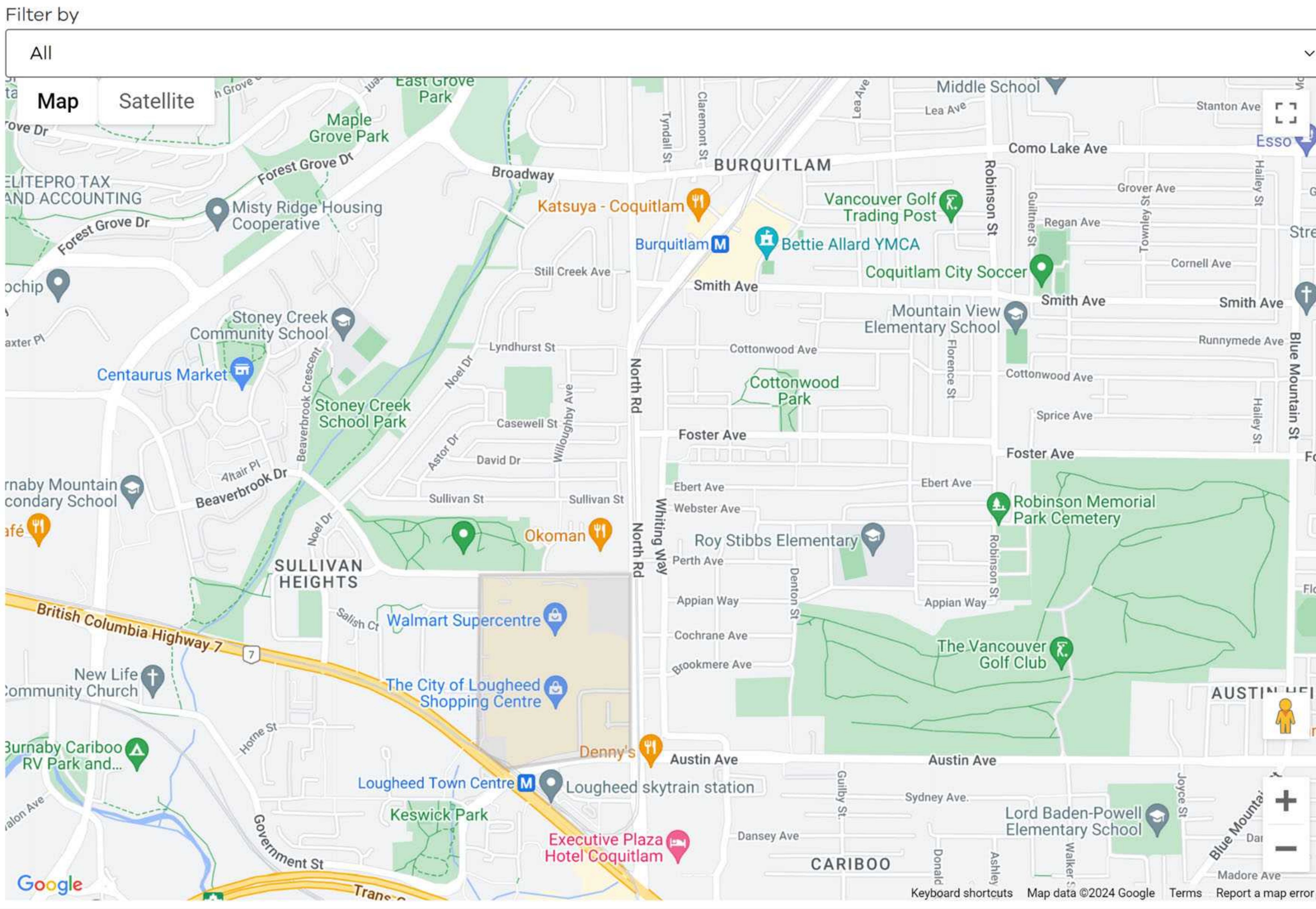
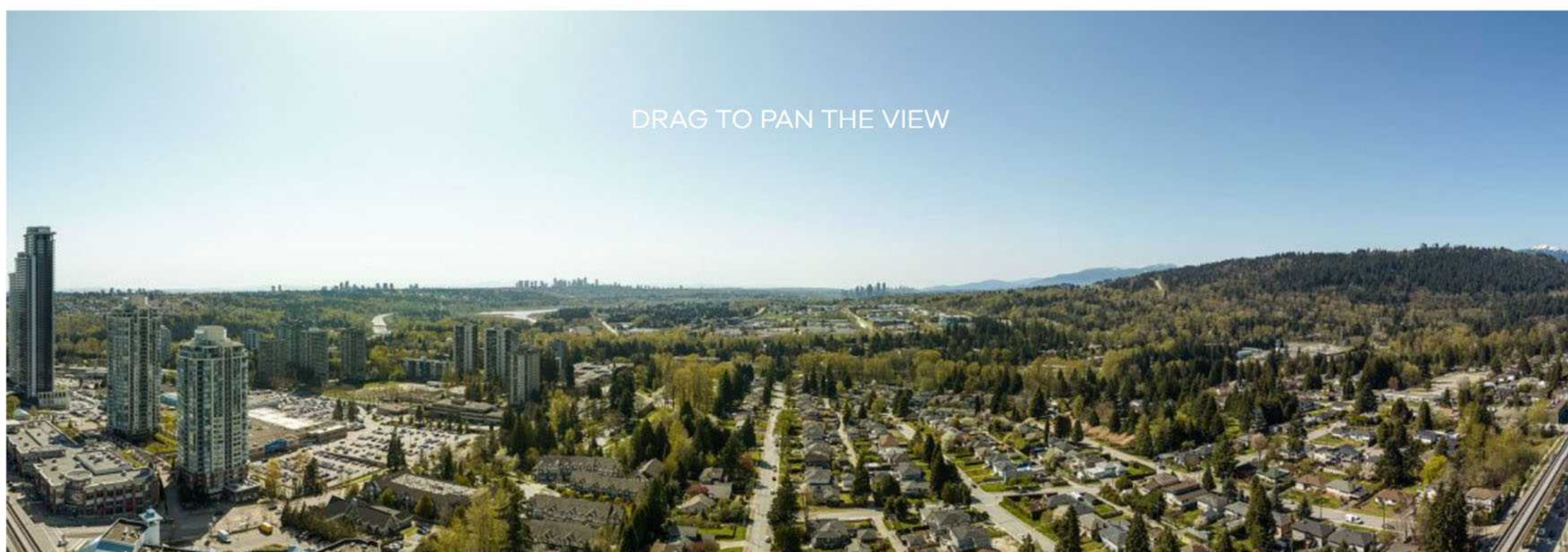
Your Life in One Place

ELEMENTS gives you the advantages of city living with upscale amenities. Here's a sample of everything you can enjoy here:

- | | | | |
|--|--|---|--|
| Recreation Facilities <ul style="list-style-type: none"> 🏌️ Vancouver Golf Club 🏟️ Cameron Recreation Complex 🏊 Como Lake 🌳 Cottonwood Park 🌳 Lyndhurst Park | Shopping Centers <ul style="list-style-type: none"> 🏬 Burquitlam Plaza 🏬 The City of Lougheed Shopping Centre 🏬 Korea Town Centre 🏬 North Road Square | Transportation <ul style="list-style-type: none"> 🚇 Burquitlam SkyTrain Station 🚇 Lougheed Town Centre SkyTrain Station Higher Education <ul style="list-style-type: none"> 🎓 Coquitlam College 🎓 Simon Fraser University (SFU) | In-catchment Schools <ul style="list-style-type: none"> 🎓 École Banting Middle 🎓 École Dr. Charles Best Secondary 🎓 École Glenayre Elementary 🎓 Port Moody Secondary 🎓 Roy Stibbs Elementary |
|--|--|---|--|

EXPLORE THE PANORAMIC VIEWS FROM YOUR DREAM HOME

Level 26 23 20 17 14 11 8 5 4 2



Book An Appointment Now

[Book an appointment](#)

Contact Us

- 📞 +1 (778) 355-6899
- ✉️ info@condoelements.ca

Sales Center

- 📍 #101-1032 Austin Avenue, Coquitlam BC, V3K 3P3
- 🕒 Saturdays to Thursdays 12:00 pm - 6:00 pm (Open on Public Holidays)

Follow Us



This is not an offering for sale. Any such offering must be made by way of disclosure statement. In our continuing effort to improve the product, the developer reserves the right to modify plans, specifications, features and prices without notice. Materials may be substituted with equivalent or better if required. All dimensions and sizes are approximate and actual final measurements may vary. Renderings are an artist's conception only and are intended as a general reference only as the actual product may vary. The contents of this are not intended to solicit interest from any non-Canadian individual or entity as defined by the Prohibition on the Purchase of Residential Property by Non-Canadians Act, E. S.O.E.