

LAUREL

on mill lake



Your Home by the Lake

Starting from \$769,900, Laurel on Mill Lake is a timeless collection of 42 townhomes and apartments on the historic shores of Mill Lake. Move in fall 2024.

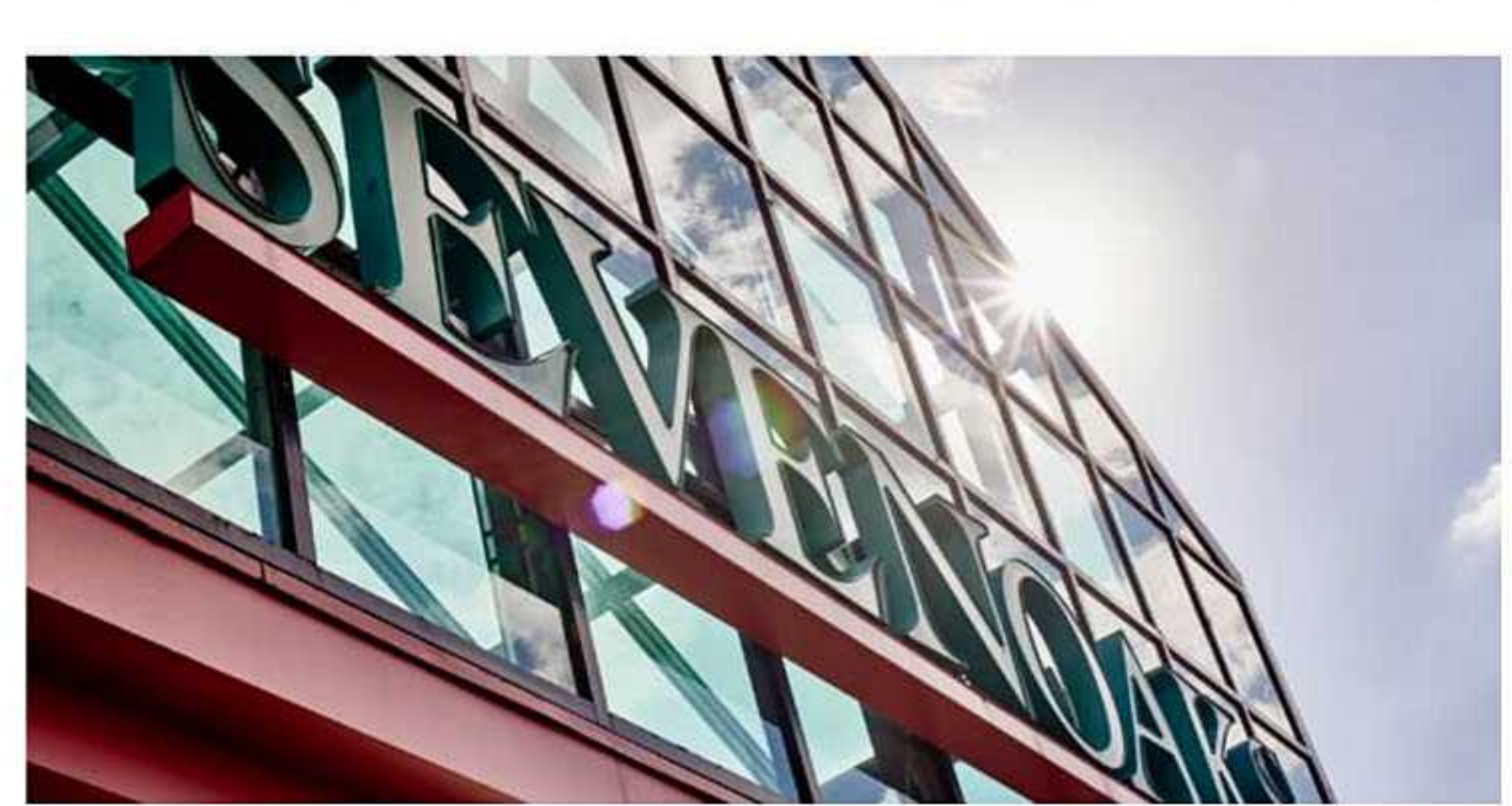


A Sophisticated Form



A stunning work of architecture takes cues from the land's industrial history and natural setting. An expansive patio invites connection and the beautiful green space of the surrounding parkland stretches to the water's edge.

[LEARN ABOUT THE BUILDING](#)



A Meaningful Community



With tranquil greenery and a shimmering lake on your doorstep, nature defines where you live. A community of restaurants and shops are within walking distance, and essential Abbotsford amenities are close.

[LEARN ABOUT THE LOCATION](#)

Interiors For Graceful Living

Live in a large home designed to elevate life, with efficient spaces, elegant finishes, and immersive luxury.

[LEARN ABOUT THE RESIDENCES](#)



DETAILS ARE IN PLACE SO THAT LIFE FLOWS SMOOTHLY.

Every Day Feels Perfect

Live in a home designed to elevate life. These large layouts make the best use of space, and are big enough to enjoy family time and year-round entertaining.

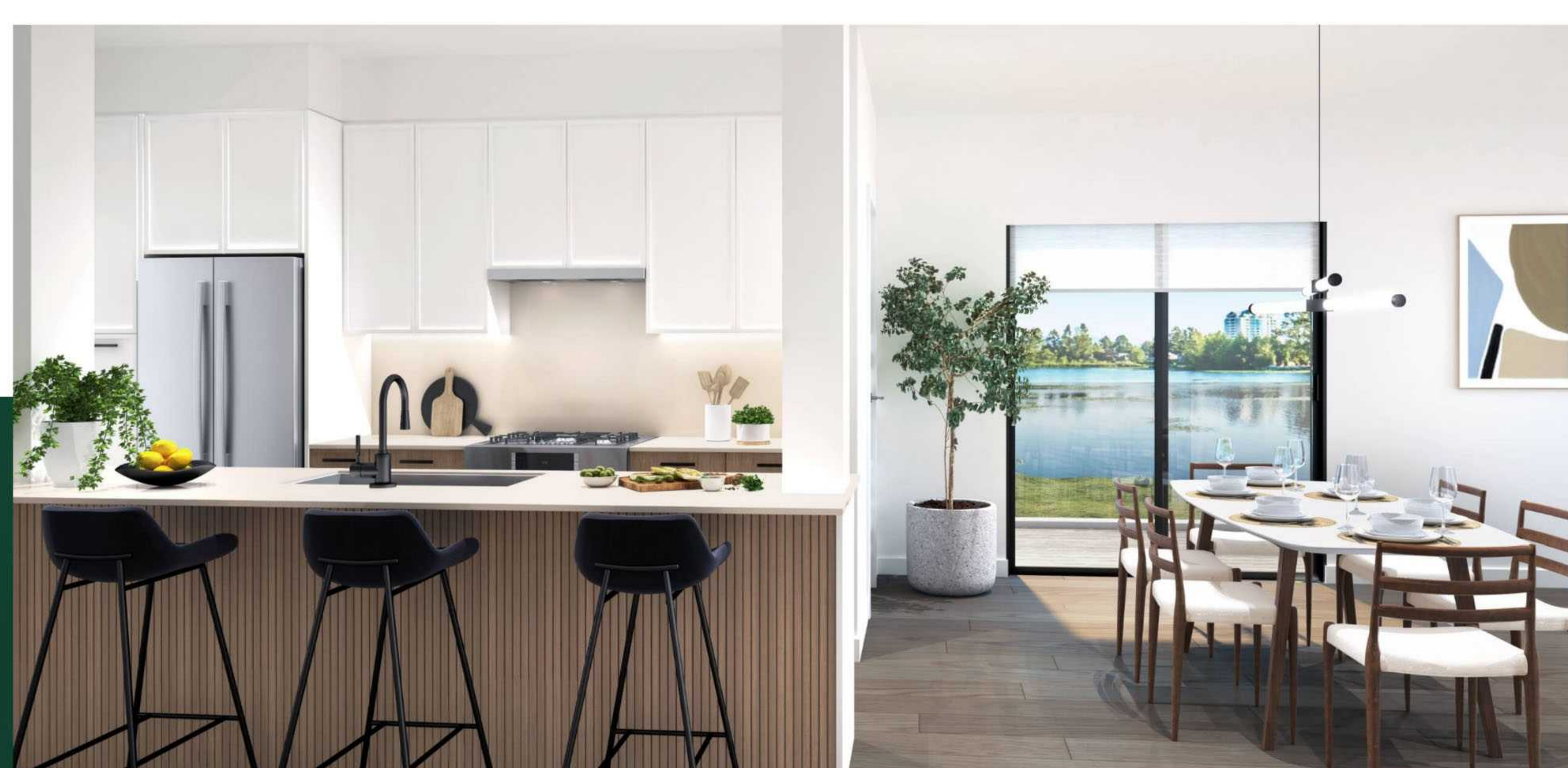


A Refined Backdrop

Elegant finishes throughout place you amongst comfort and luxury, and a collection of optional features will heighten your living experience even more. You're going to love life here.

A Place for Memories

With expansive living and dining areas, there's space to fit a sectional sofa and a table that the whole family can sit around. Linger in special moments with friends and family.



Your Gourmet Rhythm

Shape your dream kitchen by selecting from two colour schemes and three appliance packages. Whichever you choose, these modern spaces feature plenty of storage options and quality materials.



Proportions for Relaxation

Enormous bedrooms are more elevated than what you would typically expect in an Abbotsford home. There's room for a king-size bed plus additional furniture, large walk-in closets feature innovative systems to help you organize your wardrobe, and optional built-in millwork is a functional customization.

Inner Sanctuary

Ensuites are an invitation to completely unwind. Expansive stand-up showers feature both rain and hand fixtures, and a freestanding tub is the ultimate luxury.



DOUBLE OR SEPARATE VANITIES ENSURE THERE'S ENOUGH SPACE FOR TWO

Picture Life Here

Imagine your days and nights spent in an elegant Laurel on Mill Lake home.



Plan TH1 - Townhome Lakeside Collection

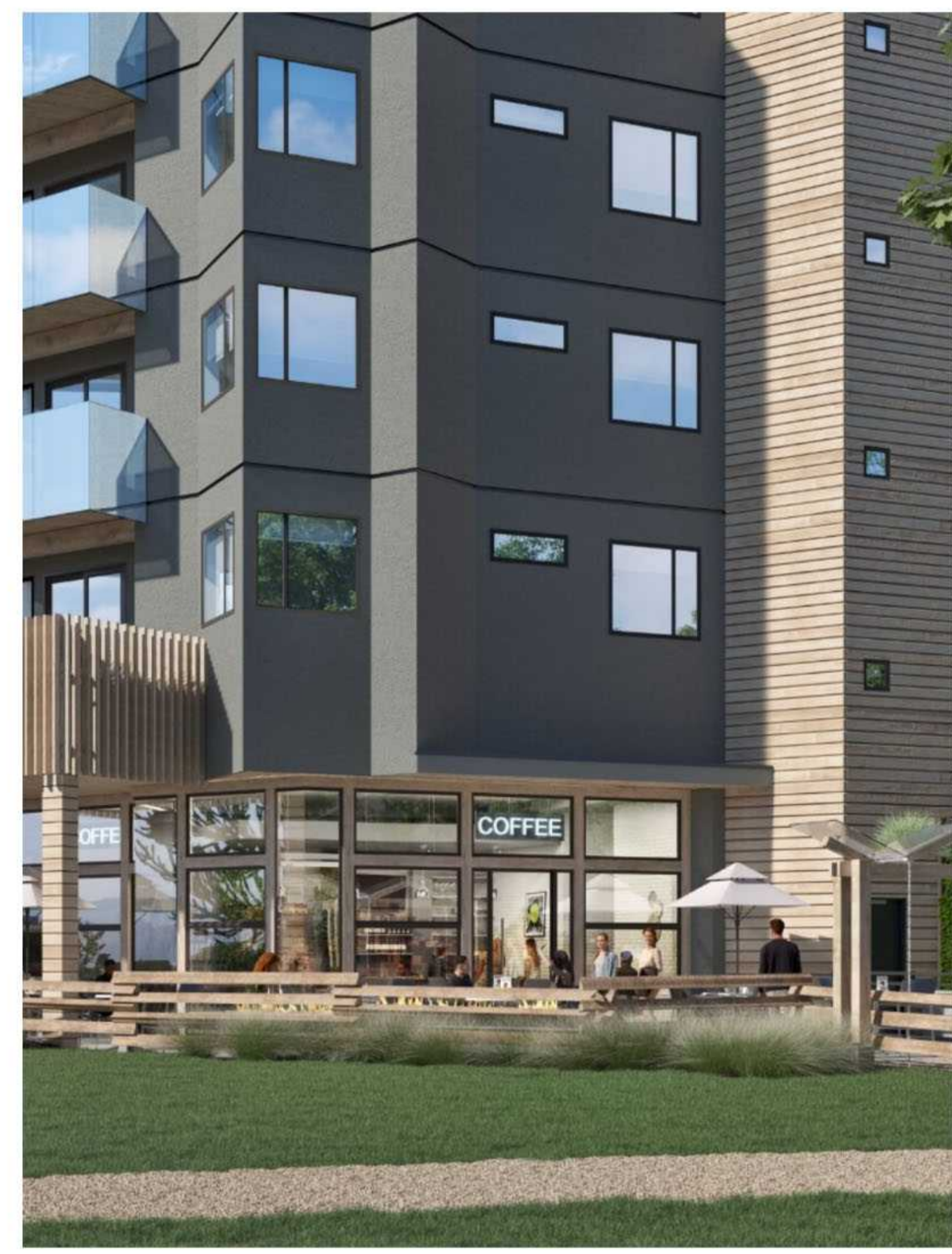


A Sophisticated Form

DESIGNED BY DAVID TYRELL ARCHITECTURE



Laurel on Mill Lake is inspired by its natural surroundings and industrial history. Contemporary lines and concrete are softened by wood and earthy tones, and rows of glass balconies resemble the shimmering surface of water. The result is a timeless and stunning work of architecture.



Revived by Nature



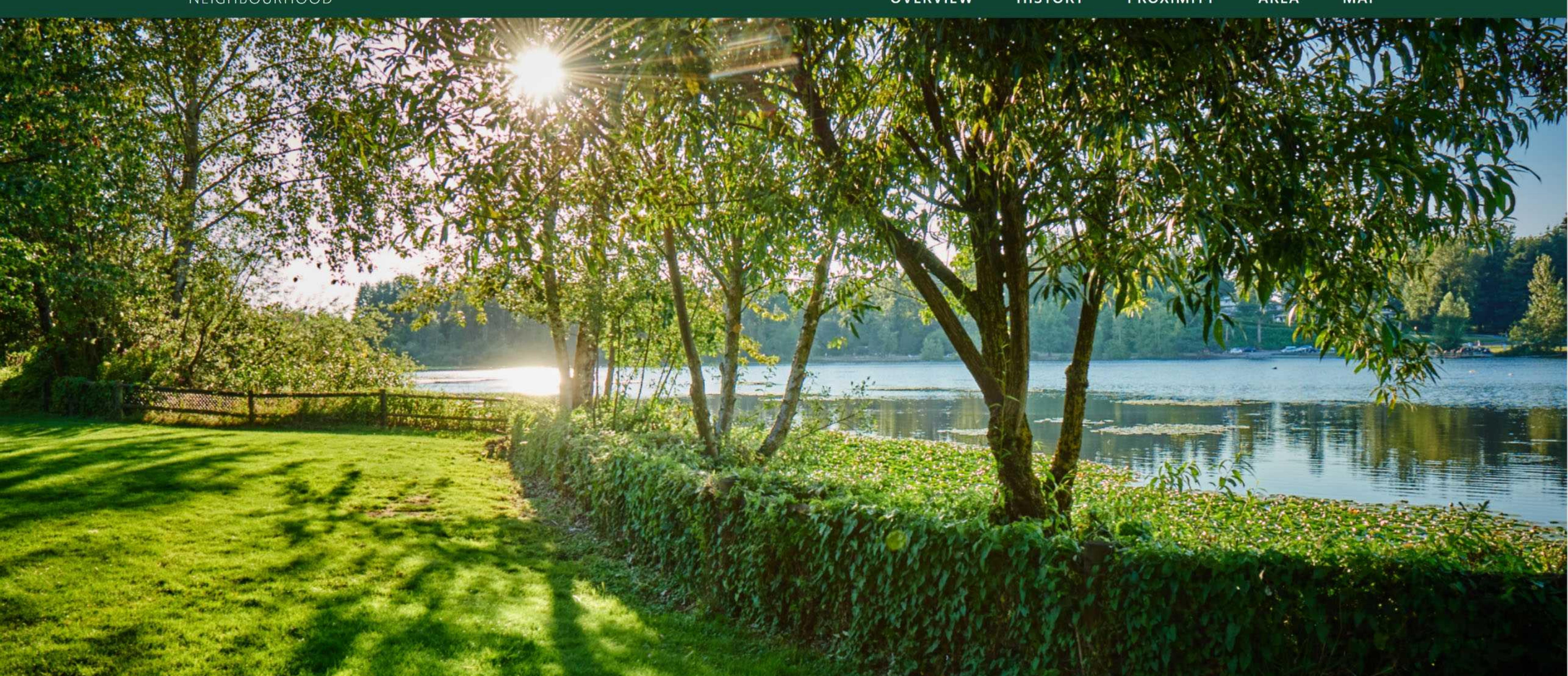
Fresh air is celebrated here, with an outdoor amenity space available for residents to enjoy year-round. A beautifully landscaped backyard stretches to the water's edge, enhancing the natural scenery framed by your window.



A Place to Connect

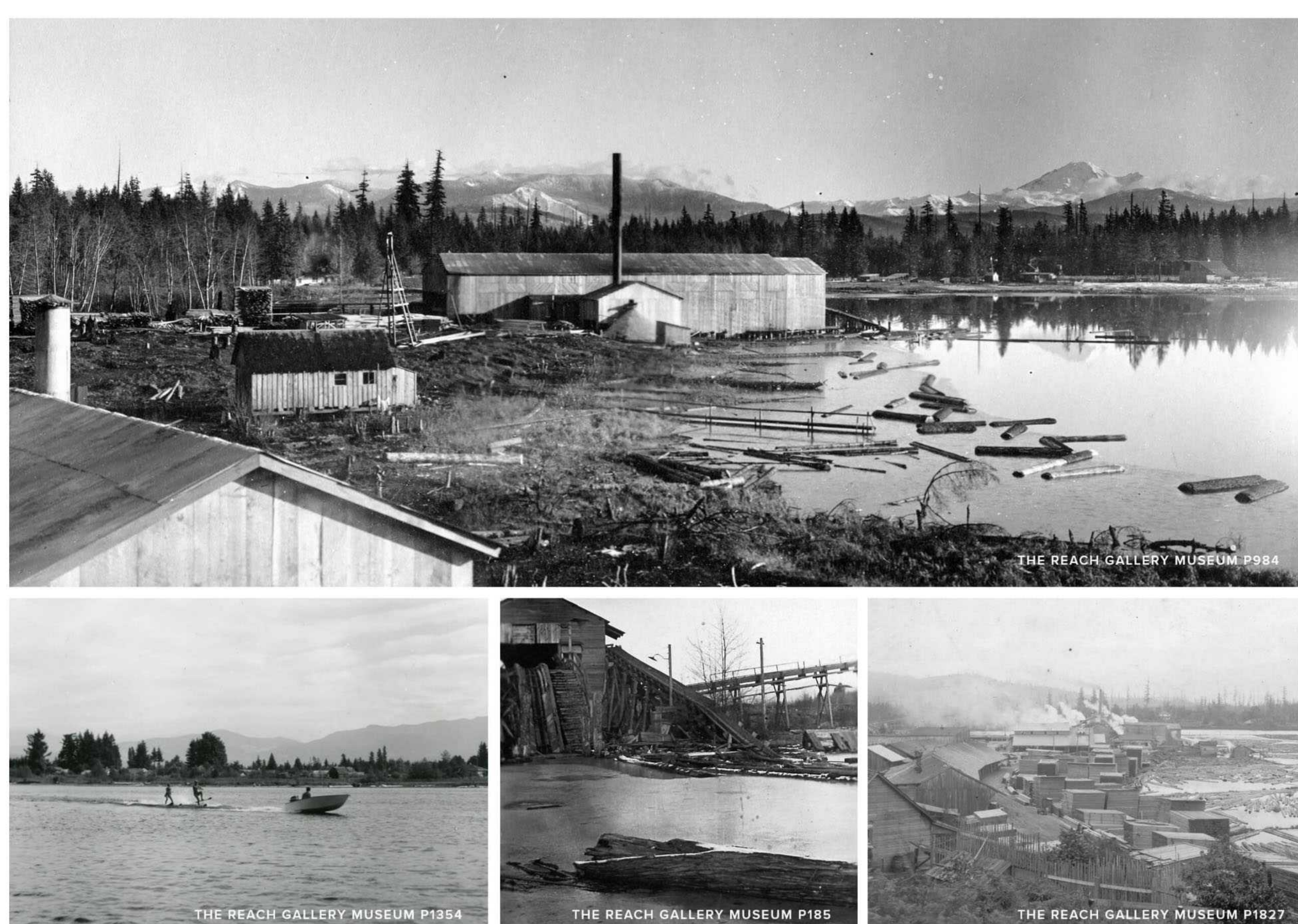
Cherish time with friends and family on the 1,645-square-foot, second-level patio, where you can gather around a fire pit, dine al fresco, or lounge while taking in the view.





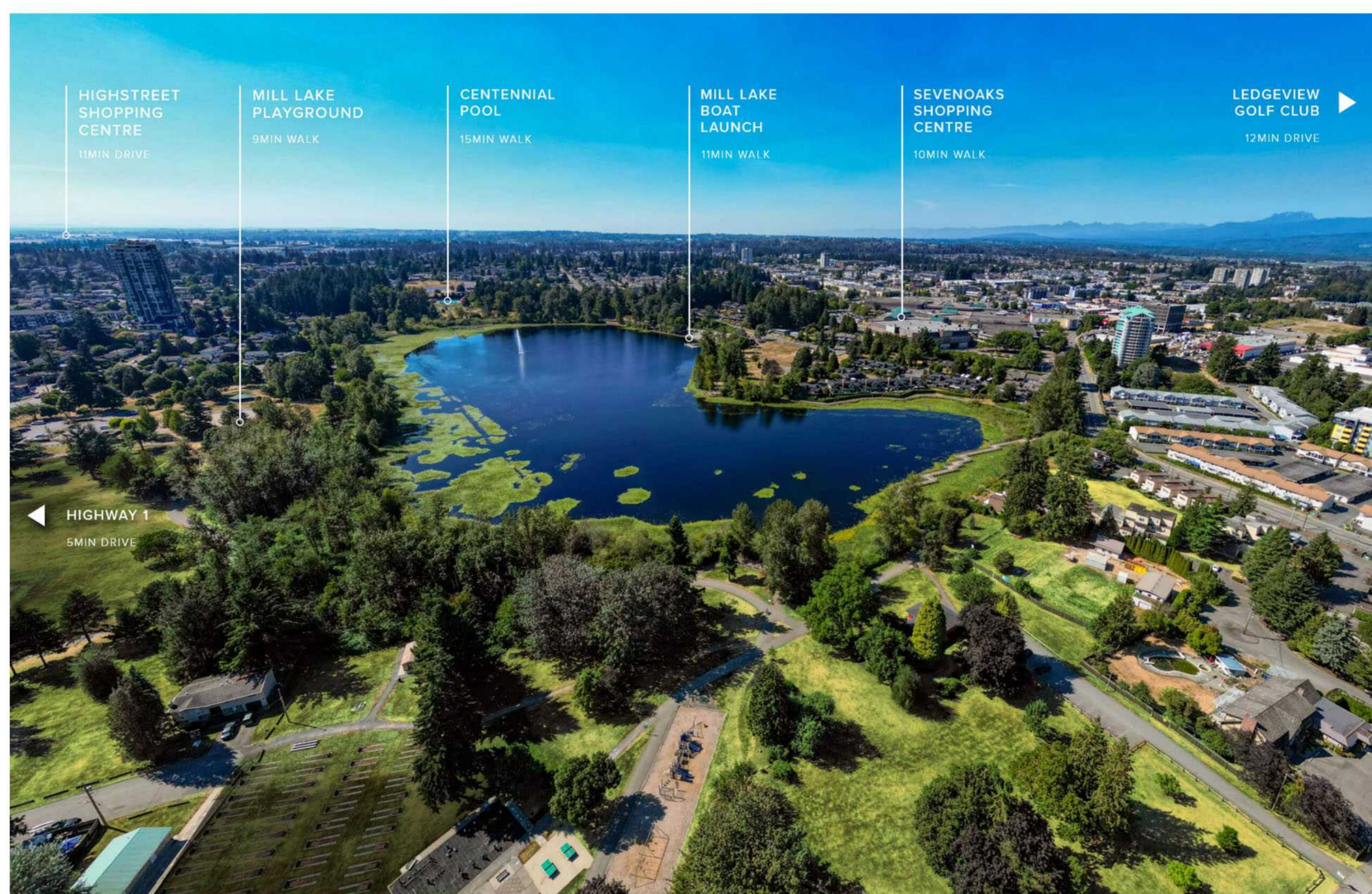
A Refreshing Lake Lifestyle

The tranquility of nature plays a meaningful part in your everyday. Take a short wander to sit peacefully by the lake's edge, walk the Mill Lake loop, or enjoy a picnic in the park with friends and family.



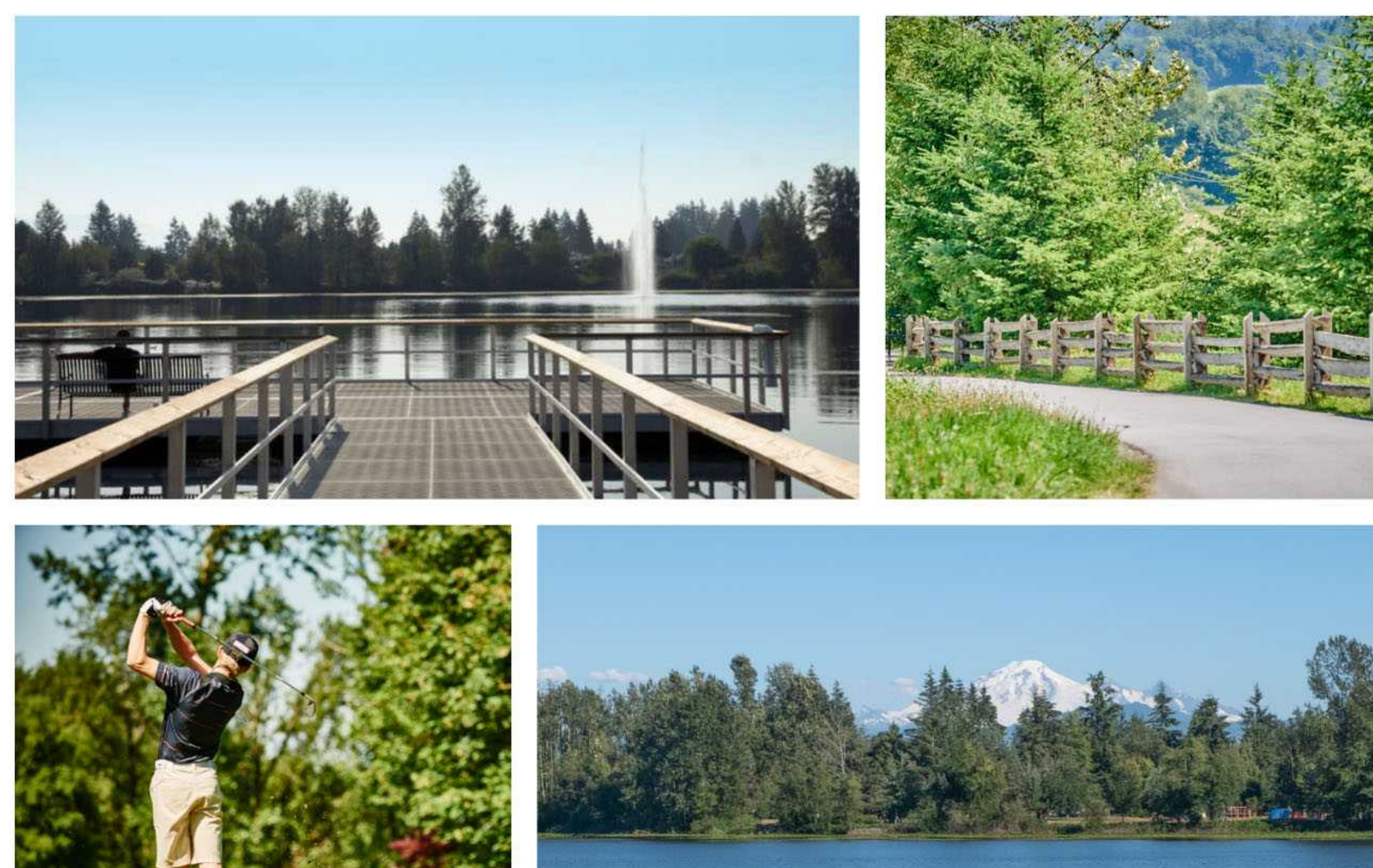
A Meaningful Past on the Lake

Mill Lake is a significant character in Abbotsford's rich history, contributing to the region's health, growth, and economy for over a century. A sawmill was first established on the lakeshore in the 1800s and remained until 1934. Shortly after, the area was completely revitalized with sand and grass to become scenic Mill Lake Park.



Close to Abbotsford's Essentials

Step away from your enclave in nature and you'll encounter a variety of restaurants and shops within walking distance of home. And only a short drive away, you'll find some of Abbotsford's best amenities.



The Great Outdoors

From nature trails to golf courses, peaceful lakes to mountain views, your life outdoors is varied, relaxing, and restorative.

Explore Your Neighbourhood

Surrounded by the best qualities of a vibrant valley community, life in this part of Abbotsford opens the door to possibility. Easily pick up groceries, browse through the many shops at Sevenoaks Shopping Centre, or enjoy an afternoon of family fun at a recreation centre.

