



Early Preview Available - Register Now



THE HOMES

Feels Right. Like A Home Should.

Modern interiors with detailed finishes and accessories are the highlight of these 3 bedroom homes that are nestled among the natural splendour of South Surrey. Bright, open living spaces are perfect for entertaining and every home has a generous side by side garage.



The Glenmont



Storefronts, Fusion Dining, Quiet Trails

Enjoy all the shopping, services, and fine-dining you'd expect to find in a metropolitan urban centre—just steps past the treeline of your own home. Grandview Corners is home to trendy, unique shops and restaurants as well as the big chains everyone has grown to love.

NEIGHBOURHOOD

SEE WHAT'S INSIDE

SEE AND JOIN THE COMMUNITY BEFORE THE PROPOSAL IS RELEASED.

FLOOR PLANS FEATURES SITE MAP



50 Tailored Homes in the Natural Setting of South Surrey

Grandview Corners is a community on the rise. With all the shopping, services and fine-dining options at Morgan Crossing, everything is within reach. Adventures abound in every direction. All that White Rock has to offer is minutes away in your car, as is the Peace Arch border crossing. Glenmont truly is located in the heart of South Surrey.

Modern Design. Surrounded by Nature.

Register today to learn more about this exciting opportunity to make the Glenmont your new home.

📍 16508 165A St. Surrey, BC
✉ sales@theglenmont.com

By submitting this form, you agree that PCC Homes may contact you with information about this and other construction that may be of interest. This is not an offering for sale. Any such offering can only be made with a disclosure statement. Dimensions, sizes, specifications, layouts and materials are approximate only and subject to change without notice. Renders are for illustrative purposes only and are subject to change.

Enter your email

Enter your Phone Number

HOW DID YOU HEAR ABOUT GLENMONT?*

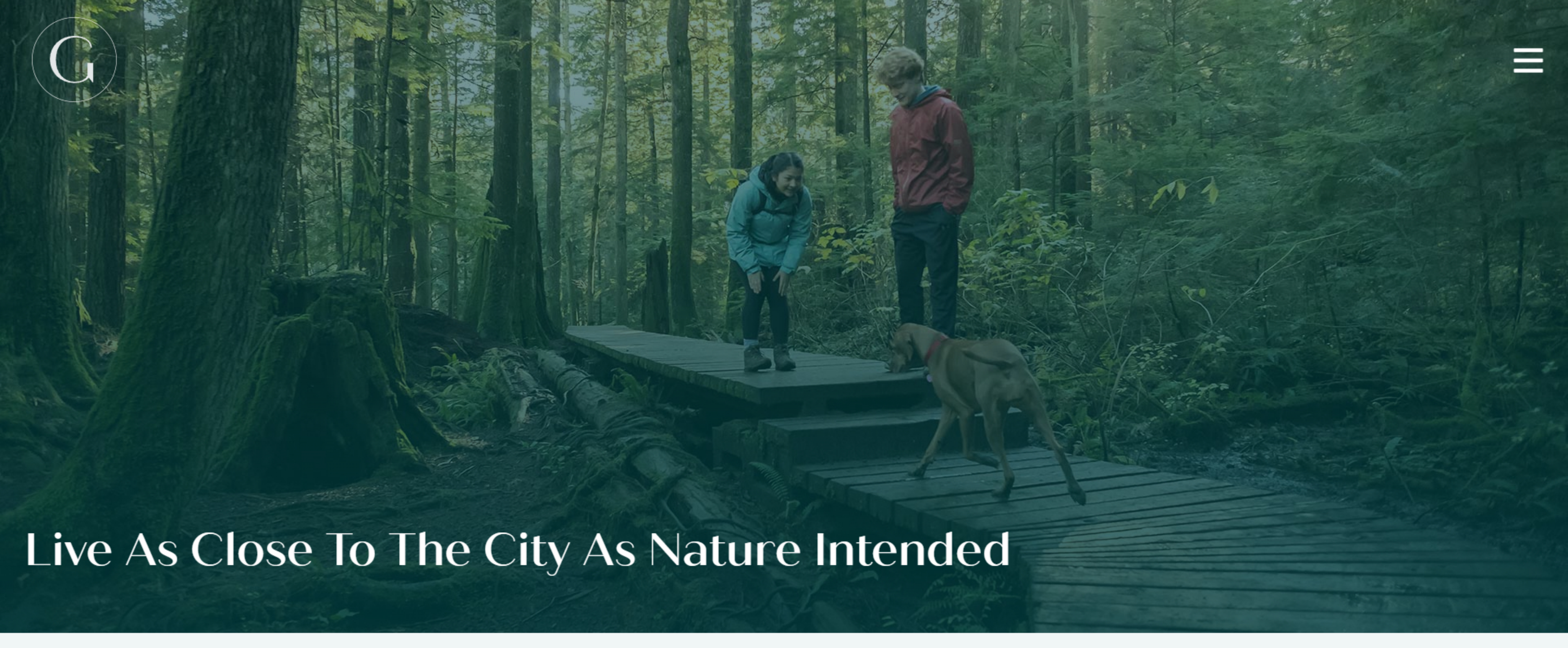
ARE YOU WORKING WITH A REALTOR?

ARE YOU A REALTOR?

CONSENT TO RECEIVING FUTURE UPDATES VIA EMAIL? Yes

REGISTER

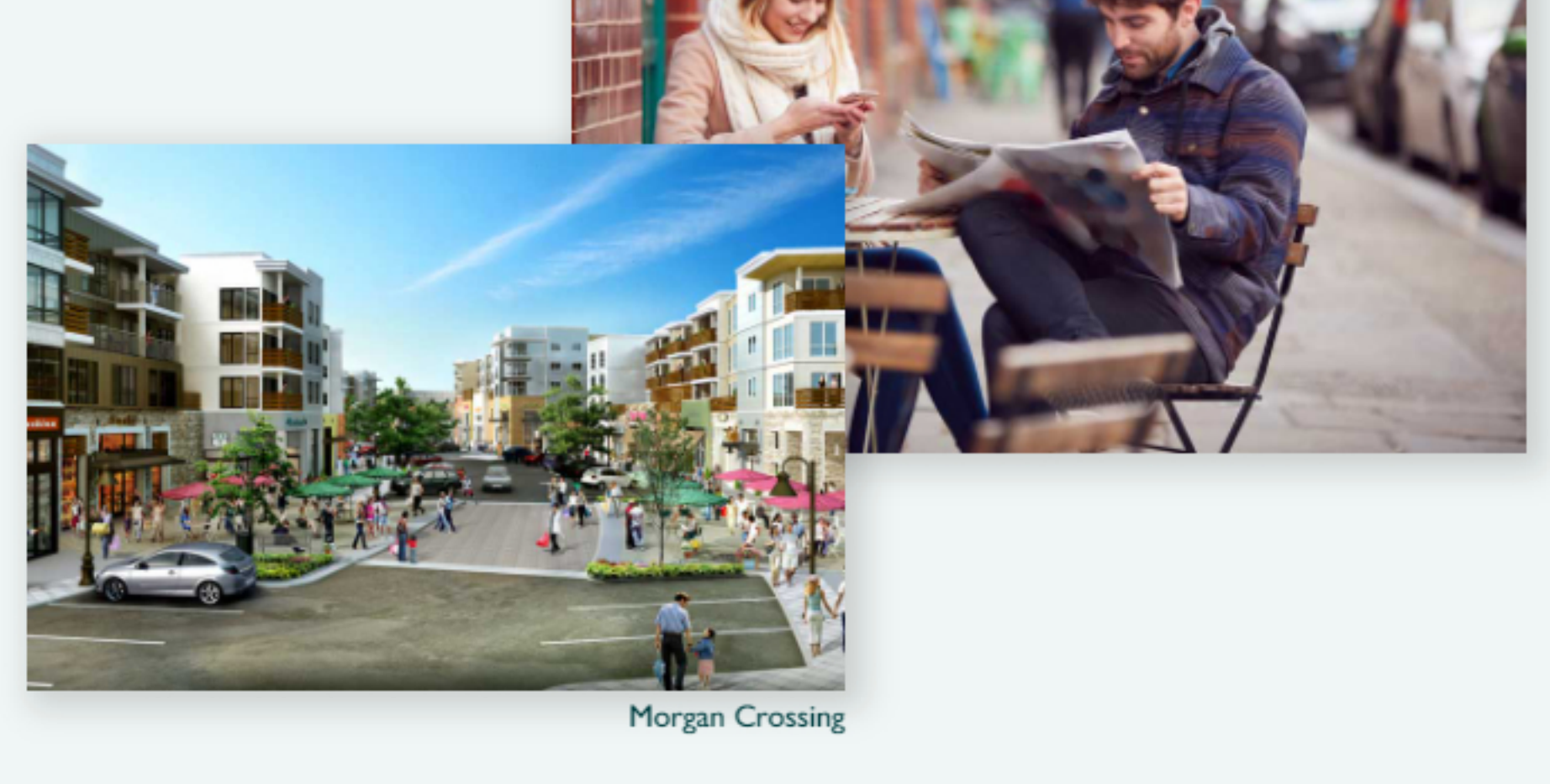




Live As Close To The City As Nature Intended

Storefronts, Fusion Dining, Quiet Trails

Enjoy all the shopping, services, and fine-dining you'd expect to find in a metropolitan urban centre—just steps past the treeline of your backyard. Located in South Surrey, the bustling Grandview Corners community is a hive of activity. The shops and services of Morgan Crossing rival anything you'd find in Downtown Vancouver.



Morgan Crossing

SOME OF OUR FAVES

Think Local. Be Local.

Small businesses are the heart and soul of a community. No offence to the big chain restaurants, pubs and coffee shops but Grandview Corners is home to truly unique shops and services that are the nucleus of the neighbourhood.



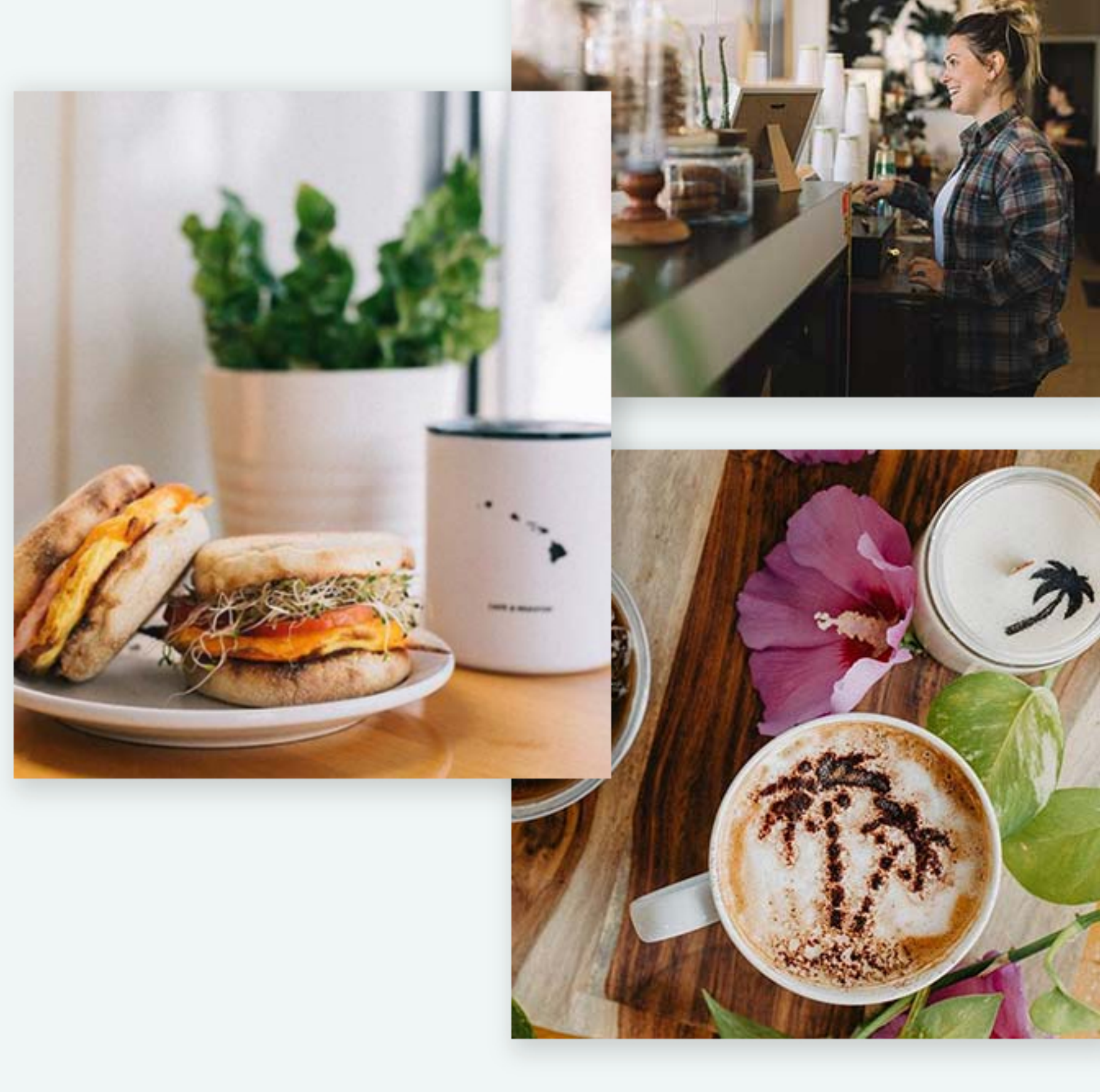
ISLANDS CAFE

Made with love & served with care

A Cafe and Roaster in White Rock, serving the BEST Maui and Kona grown Coffee, Pastries, traditional Hawaiian Poke and the immensely popular Acai Bowls.

islandscfe
islandscfe.ca

#41 16041 24th Ave, Surrey



AFGHAN KITCHEN

A Taste of Home

Afghan Kitchen is the manifestation of a young boy's dream. He roamed the streets of Kabul in his sandals and saw how hard his family worked to sustain themselves. In the times of war, they moved to different neighbouring countries until they finally came to Canada.

eatdrinkafghan
aksurrey.com

#115-16120 24 Ave, Surrey



3 DOGS BREWING

There Is A Story Behind Every Beer

3 Dogs is a family and friends built brewery that has brought Vancouver brewery lounge culture to White Rock, with 13 rotating taps and a cozy, pub-style room for the community to gather in.

3dogsbrewing
3dogsbrewing.com

1515 Johnston Rd, White Rock



Building Community One Neighbour At A Time

Located in South Surrey, the bustling Grandview Corners community is a hive of activity, including a blossoming art scene. Unique shops, services and entertainment are just minutes from your front door. When nature calls, you're minutes away from endless wholesome ways to start fresh: from hiking to golfing, camping, sailing, swimming, or mountain biking. When it's time to unwind, the proximity to White Rock ensures an afternoon at the beach is never out of the question.

SCHOOLS	ERRANDS	DINING	RECREATION	SHOPPING
<ul style="list-style-type: none"> Edgewood Elementary Grandview Heights Secondary Earl Marriott Secondary New Tatalu Elementary School (2023) Grandview Heights Elementary Growing Kids Childcare 				

Modern Design. Surrounded by Nature.

Register today for VIP access

Register today to learn more about this exciting opportunity to make the Glenmont your new home.

16508 165A St, Surrey, BC
sales@theglenmont.com

By submitting this form, you agree that PCC Homes may contact you with information about this and other communities that may be of interest. This is not an offering for sale. Any such offering can only be made with a disclosure statement. Dimensions, sizes, specifications, layout and materials are approximate and subject to change without notice. Residents are for illustrative purposes only and are subject to change.

FIRST NAME*	LAST NAME
<input type="text" value="Enter your first name"/>	<input type="text" value="Enter your last name"/>
EMAIL*	PHONE NUMBER
<input type="text" value="Enter your email"/>	<input type="text" value="Enter your Phone Number"/>
HOW DID YOU HEAR ABOUT GLENMONT?*	ARE YOU WORKING WITH A REALTOR?
<input type="text"/>	<input type="text"/>
ARE YOU A REALTOR?	
<input type="text" value="No"/>	
CONSENT TO RECEIVING FUTURE UPDATES VIA EMAIL? <input type="checkbox"/> Yes <input type="checkbox"/> No	

REGISTER



GLENMONT

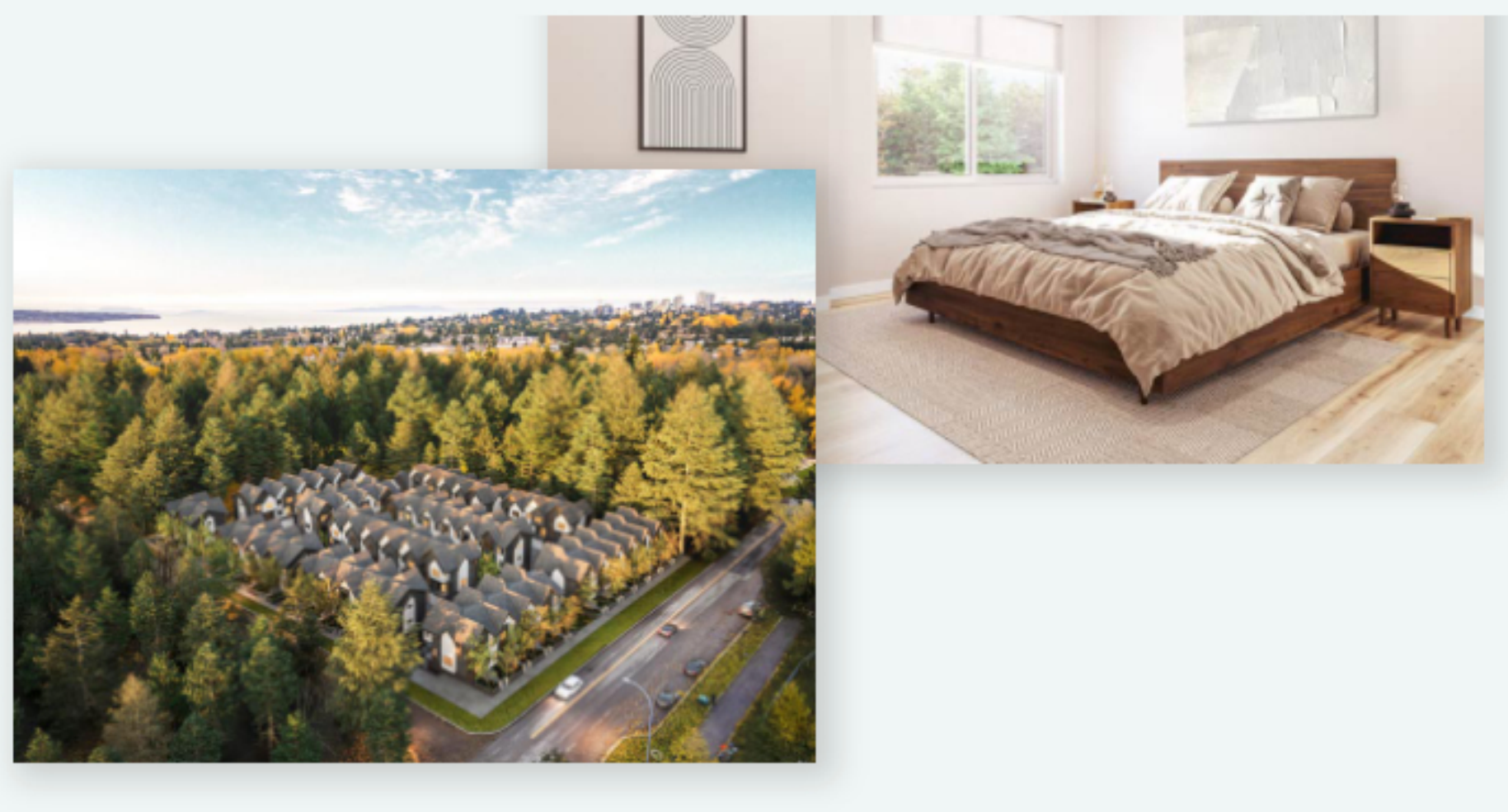




Feels Right. Like A Home Should.

Want in a Home is Inside.

Cosmopolitan kitchens where your family will want to gather. Spa-like bathrooms that provide a sanctuary at the end of a busy day. Expansive walk in closets in every Master with windows that draw in natural light. Side by side garages with plenty of storage space.



THE DETAILS

Development Features

A community of 50 homes in a quiet and natural setting in South Surrey with a 2 floor indoor amenity space and an outdoor green space, Glenmont provides room for your family to grow in a neighbourhood on the rise.

EXTERIORS

Appointed With Elegance

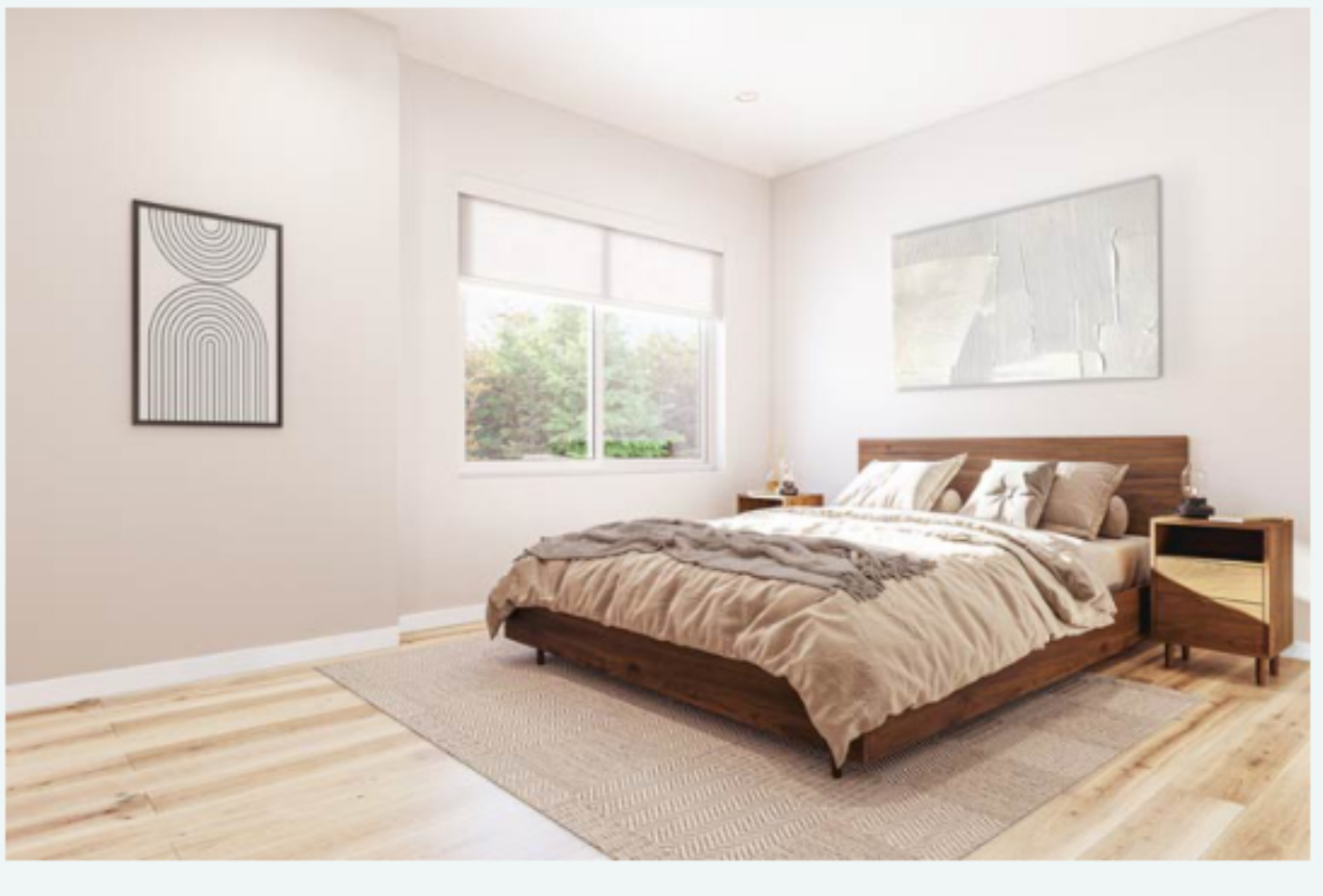
- Glenmont sets the bar with its heritage architecture featuring dramatic pitched roofs, cultured stone, rich wood accents and hardi-plank siding
- Classic fencing and entry gates create a welcoming streetscape that complements the architecture on street front homes
- Second level deck right off the kitchen features a natural gas hookup and a sleek aluminium and glass guardrail system
- Prominent individual entries feature classic doors with brushed hardware



INTERIORS

A Cozy Urban Retreat

- Contemporary hardwood flooring on the main living floor and basement
- Lush carpeting on all stairs and upper floor
- Eco-friendly, high efficiency LED lighting
- Stylish matte black hardware theme throughout the home
- Calming white, wood-grained blinds allow you to adjust the natural light in every room
- All homes are balanced with spacious side-by-side garages
- Private flex space makes working from home a breeze
- Luxurious walk-in closet, complete with windows in the master suite
- Modern flat panel cabinetry throughout the home
- High ceilings on the main floor



KITCHENS

Kitchens To Inspire

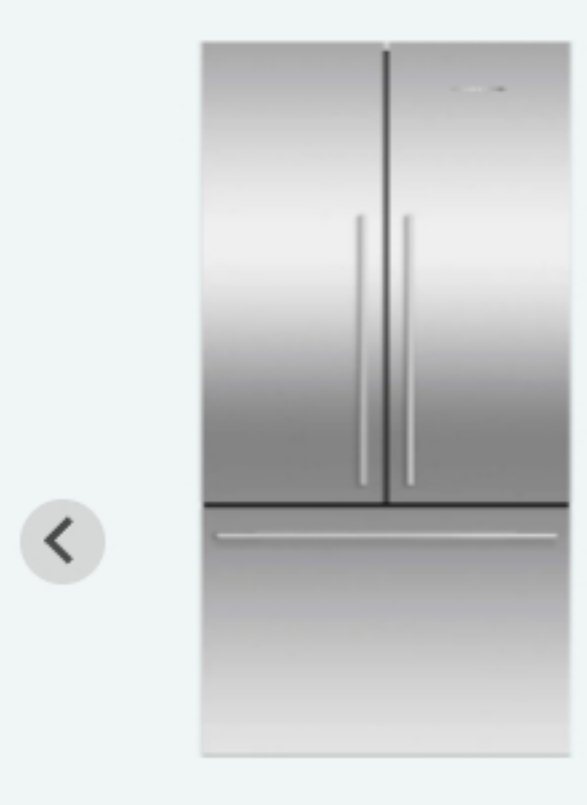
- Quality natural quartz countertops
- Sensible yet stylish waterfall kitchen island with complementing quartz countertop and cozy breakfast bar
- Modern charcoal undermount sink with matte black single handle faucet



FISHER PAYKEL

Beautiful to look at. Even better to create with.

Every home is equipped with a premium appliance package by Fisher & Paykel that includes a freestanding French door refrigerator with smart touch control, a seamless integrated dishwasher with interior LED lighting and an impressive large capacity gas range with precise control.



Fridge
Fisher & Paykel 36" Fridge



Range
Fisher & Paykel 30" Gas Range



Dishwasher
Fisher & Paykel 24" Dishwasher



BATHROOMS

Every Bathroom, A Luxurious Sanctuary

- Convenient main floor powder room
- Contemporary white quartz vanities
- Stylish Kohler undermount sinks
- Sleek matte black Delta faucets, accents and accessories
- World-class Full Body Spray shower head by Delta
- Sophisticated matte grey floor tiles, balanced by staggered white tile on the walls
- Ornate wall sconce lighting in matte black and clear ribbed glass
- Master ensuite boasts a double vanity and spacious tiled walk-in shower with matte black hinges
- Enjoy the main bath that features a soaker tub with full tile surround

EVERYDAY FEATURES

Fun and Functional

- High capacity stacking Samsung washer & dryer
- Built-in closet shelving and organizers throughout entry and bedroom closets
- Two floor indoor amenity featuring kitchen and large gathering space
- Outdoor amenity with green space and children's playground
- Ample parking for guests



Future Proof Your Peace Of Mind

- Quality Assurance by PCC Homes' Customer Care Program
- Rainscreen protection system for weather durability
- Air conditioning roughed in
- Electronic doorbell with camera
- Hard-wired smoke and carbon monoxide detectors
- Every home is prewired for security systems
- Comprehensive New Home 2-5-10 Warranty

Modern Design. Surrounded by Nature.

Register today for VIP access

Register today to learn more about this exciting opportunity to make the Glenmont your new home.

16508 165A St. Surrey, BC
sales@theglenmont.com

By submitting this form, you agree that PCC Homes may contact you with information about this and other commercial real estate opportunities. This is not an offering for sale. Any such offering can only be made with a disclosure statement. Conditions, terms, specifications, layout and materials are approximate and subject to change without notice. Reserves are for illustrative purposes only and are subject to change.

FIRST NAME*

LAST NAME

EMAIL*

PHONE NUMBER

HOW DID YOU HEAR ABOUT GLENMONT?*

ARE YOU WORKING WITH A REALTOR?

ARE YOU A REALTOR?

CONSENT TO RECEIVING FUTURE UPDATES VIA EMAIL? Yes



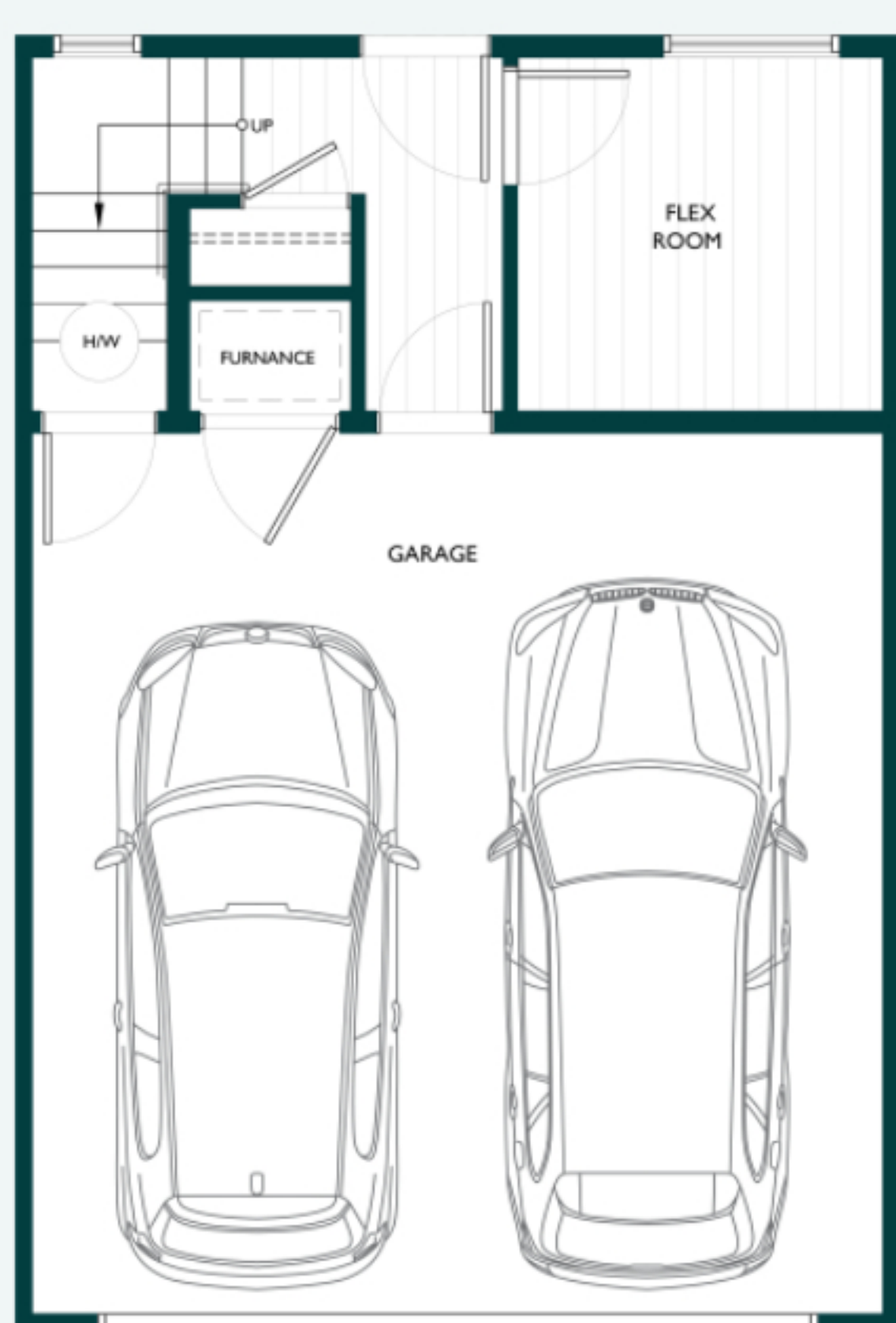
GLENMONT



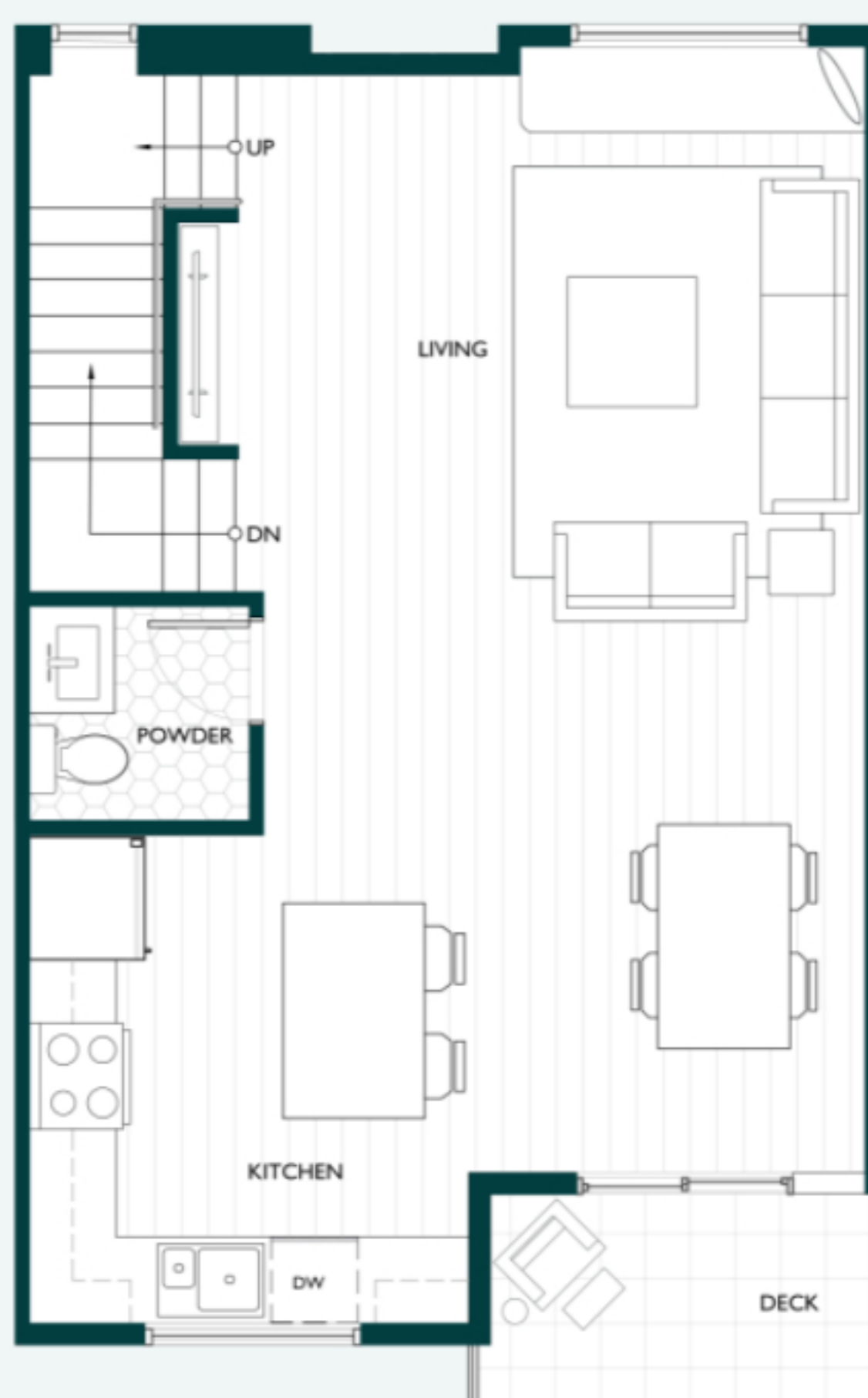
Layouts



3 Bed + Flex • 3 Bath • 1,386 S.F. interior total



LOWER
180 S.F.



MAIN
579 S.F.



UPPER
627 S.F.

DOWNLOAD PLAN

DOWNLOAD ALL

Modern Design. Surrounded by Nature.

Register today for VIP access

Register today to learn more about this exciting opportunity to make the Glenmont your new home.

📍 16508 165A St. Surrey, BC
✉ sales@theglenmont.com

By submitting this form, you agree that PCC Homes may contact you with information about this and other communities that may be of interest. This is not an offering for sale. Any such offering can only be made with a disclosure statement. Dimensions, sizes, specifications, layouts and materials are approximate only and subject to change without notice. Renders are for illustrative purposes only and are subject to change.

FIRST NAME*

LAST NAME

EMAIL*

PHONE NUMBER

HOW DID YOU HEAR ABOUT GLENMONT?*

ARE YOU WORKING WITH A REALTOR?

ARE YOU A REALTOR?

CONSENT TO RECEIVING FUTURE UPDATES VIA EMAIL? Yes

REGISTER



GLENMONT





GLENMONT

Your new life and your new home awaits.
Connect with us today.

Register today for VIP access at the Glenmont

FIRST NAME*	LAST NAME
<input type="text" value="Enter your first name"/>	<input type="text" value="Enter your last name"/>
EMAIL*	PHONE NUMBER
<input type="text" value="Enter your email"/>	<input type="text" value="Enter your Phone Number"/>
HOW DID YOU HEAR ABOUT GLENMONT?*	ARE YOU WORKING WITH A REALTOR?*
<input type="text" value=""/>	<input type="text" value="-"/>
ARE YOU A REALTOR?*	
<input type="text" value="No"/>	
CONSENT TO RECEIVING FUTURE UPDATES VIA EMAIL? <input type="checkbox"/>	

REGISTER



Modern Design.
Surrounded by Nature.



GLENMONT

