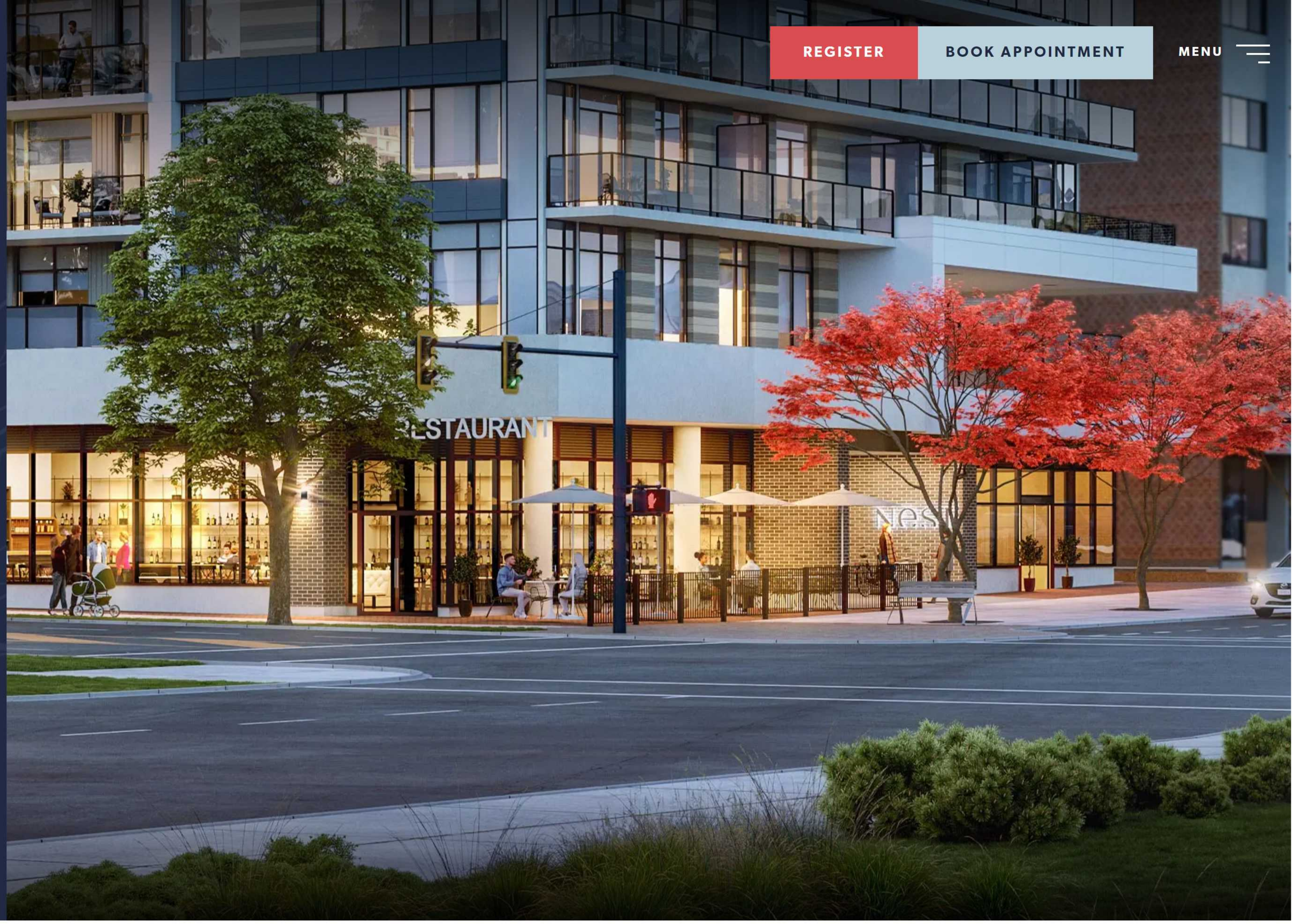


EXTERIOR

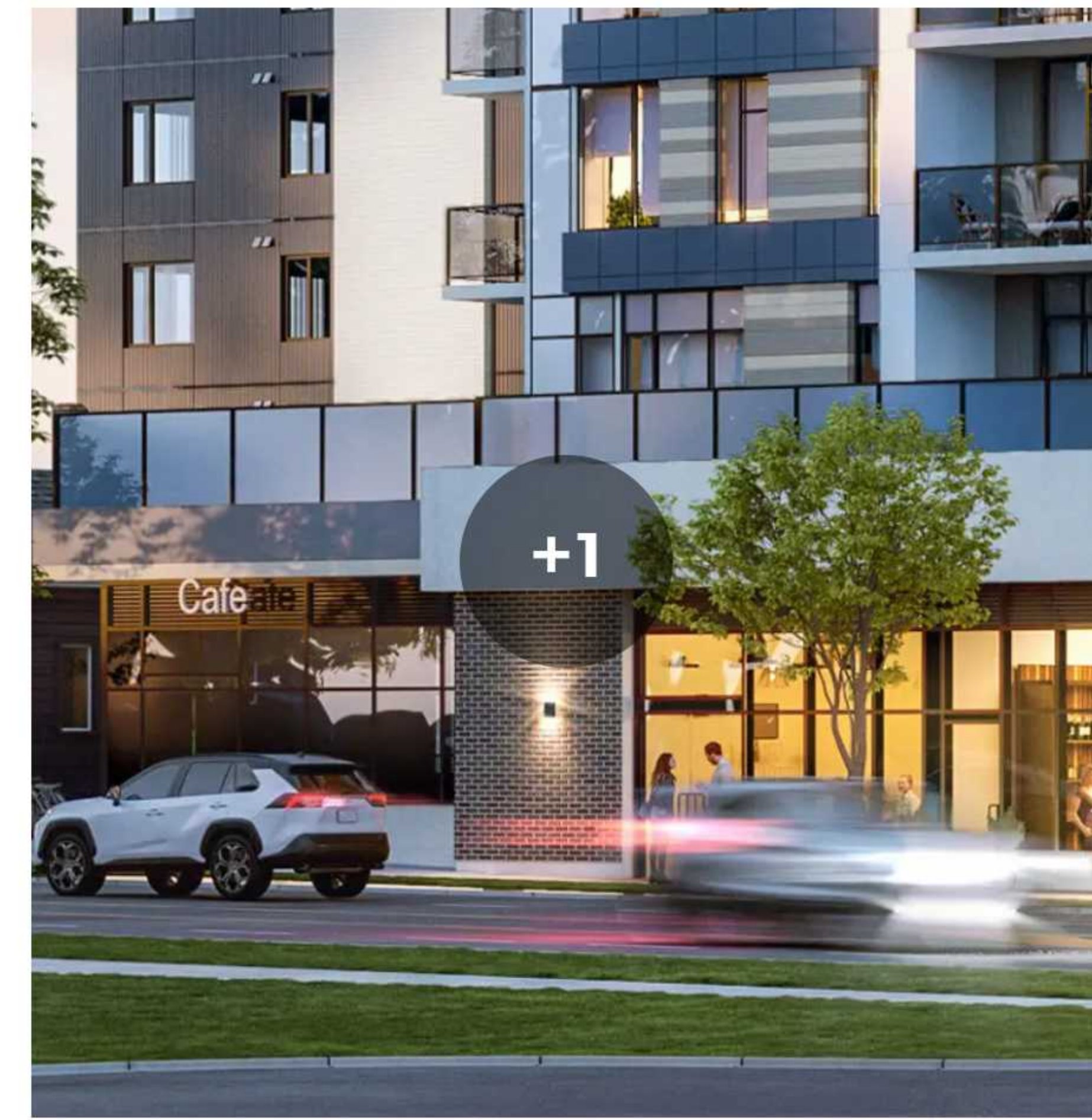
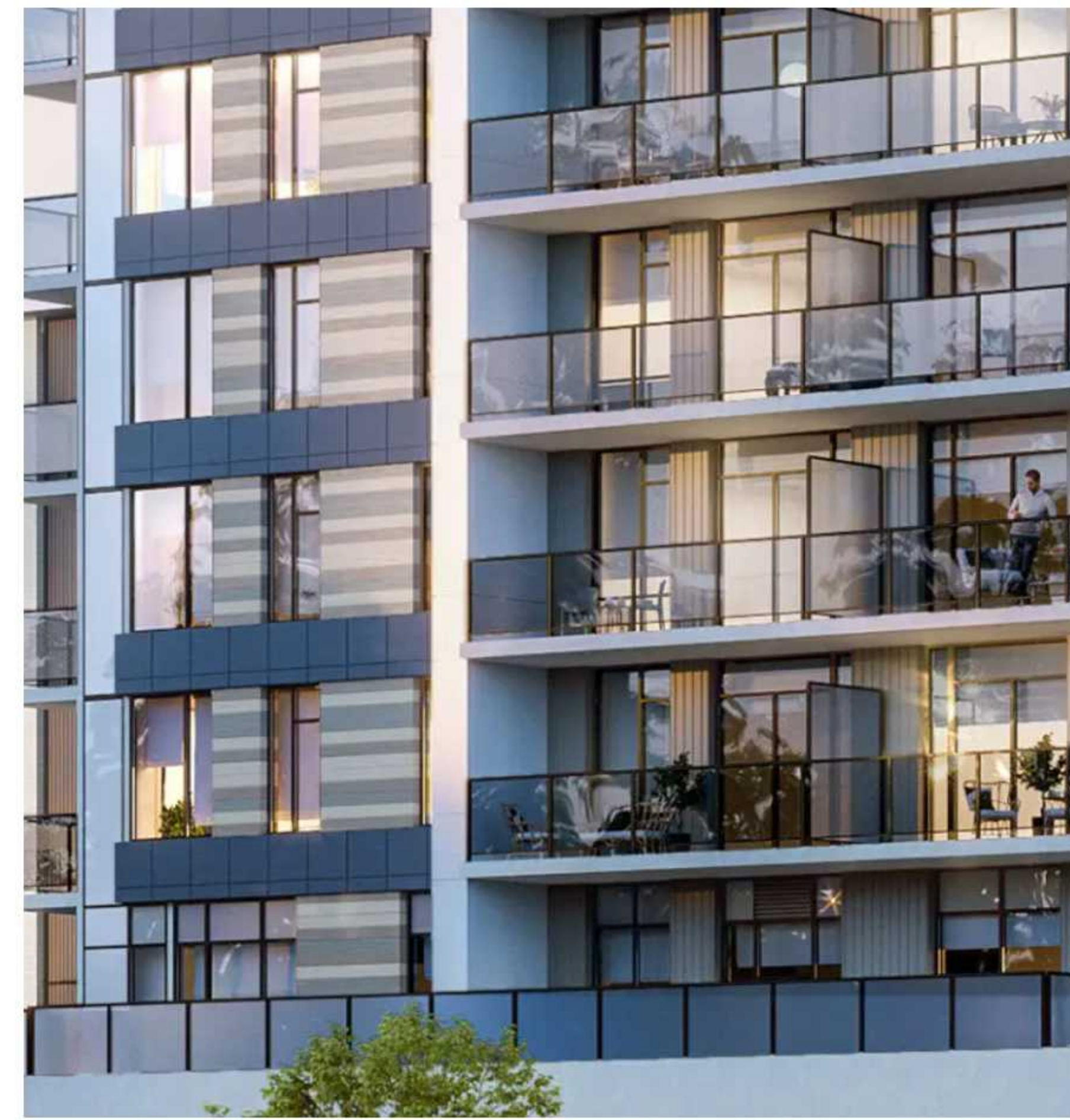
BOUTIQUE IN SCALE

NEST's 12 storeys are cast in concrete and elevated by distinguished finishes. Expansive windows ensure abundant natural light and ample fresh air while oversized balconies extend living beyond the interior.



Big on Benefits

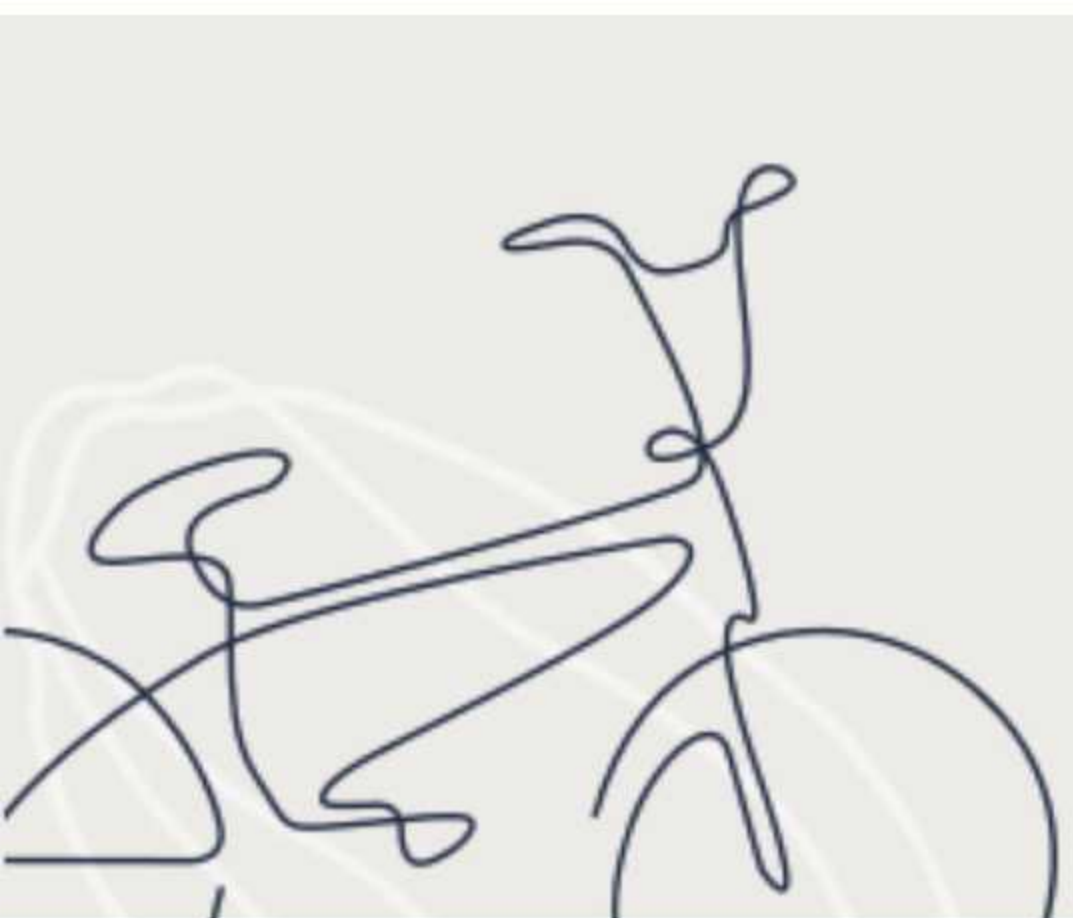
A large, landscaped central mews encourages residents to gather in the open air or sit quietly amongst the greenery. A children's play area and a full floor childcare centre serve as a welcome community benefit, while a dedicated dog run and convenient dog wash mean all members of the family are considered.



COMMON CONVENIENCES

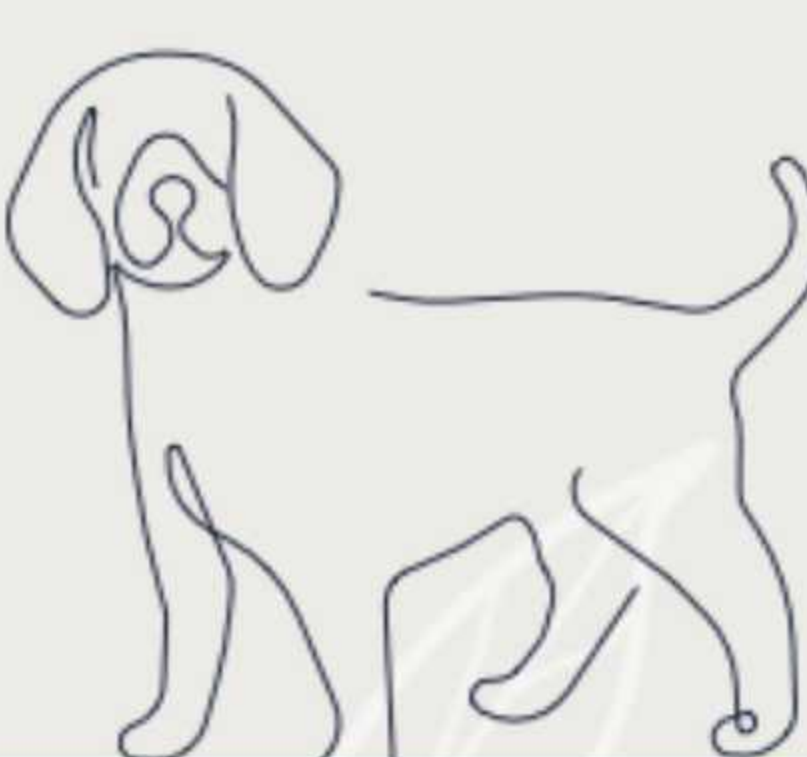
More home to enjoy.

- Community serving retail including a space designed to accommodate a restaurant with outdoor dining
- Fitness studio complete with weights and cardio equipment
- 2nd floor childcare facility
- Security of concrete construction
- Original artwork by local artists
- Dog wash with both hot and cold water supply
- Easily accessible bike storage and maintenance bench
- Exclusive residents only bike share program with ebikes
- On site car share program including complementary resident membership and \$500 of drive time
- Internal mews with a children's play area and multiple seating areas
- Secured full height storage lockers (most suites)
- Sleek lobby design and convenient parcel delivery area



NEST

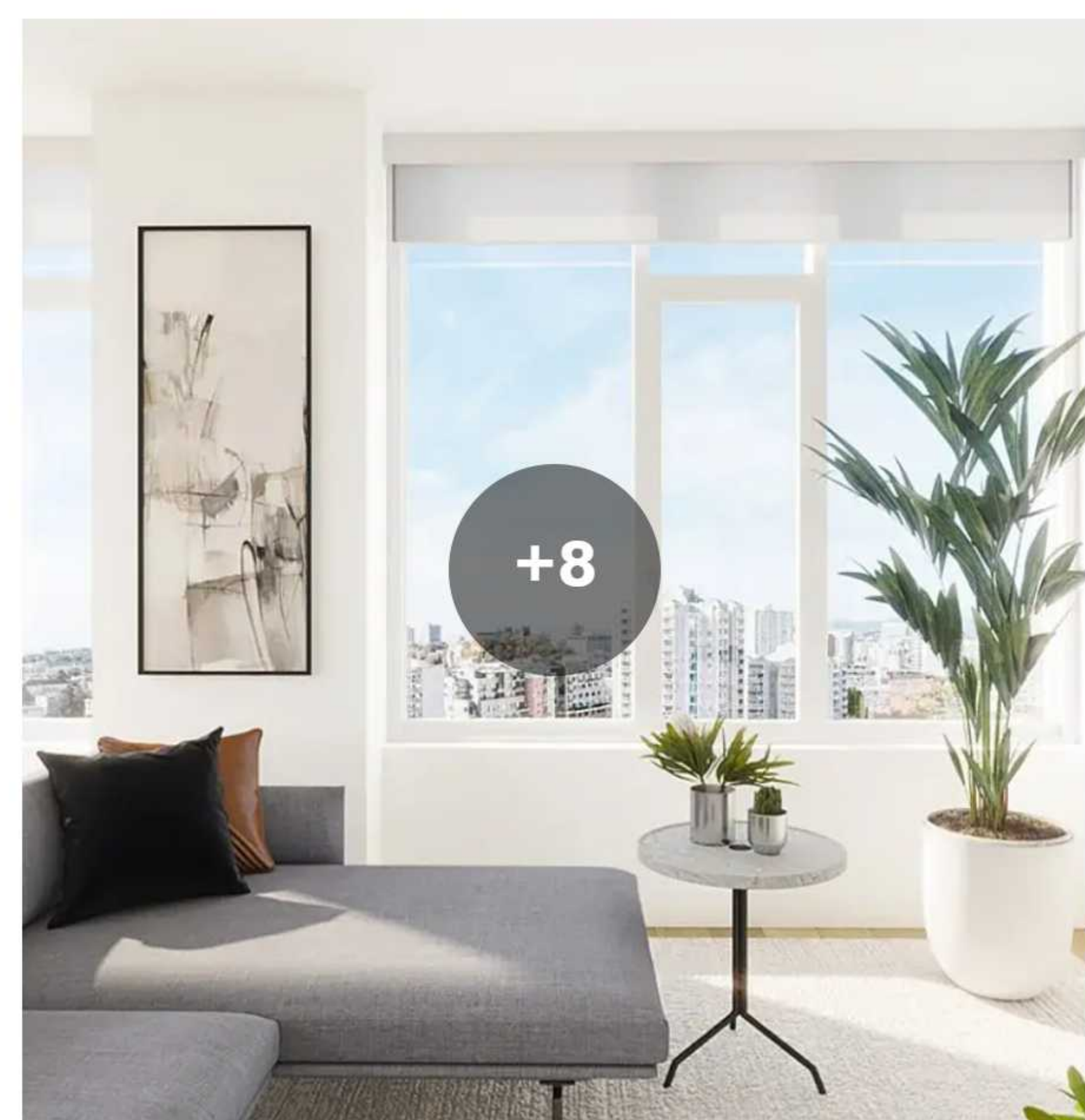
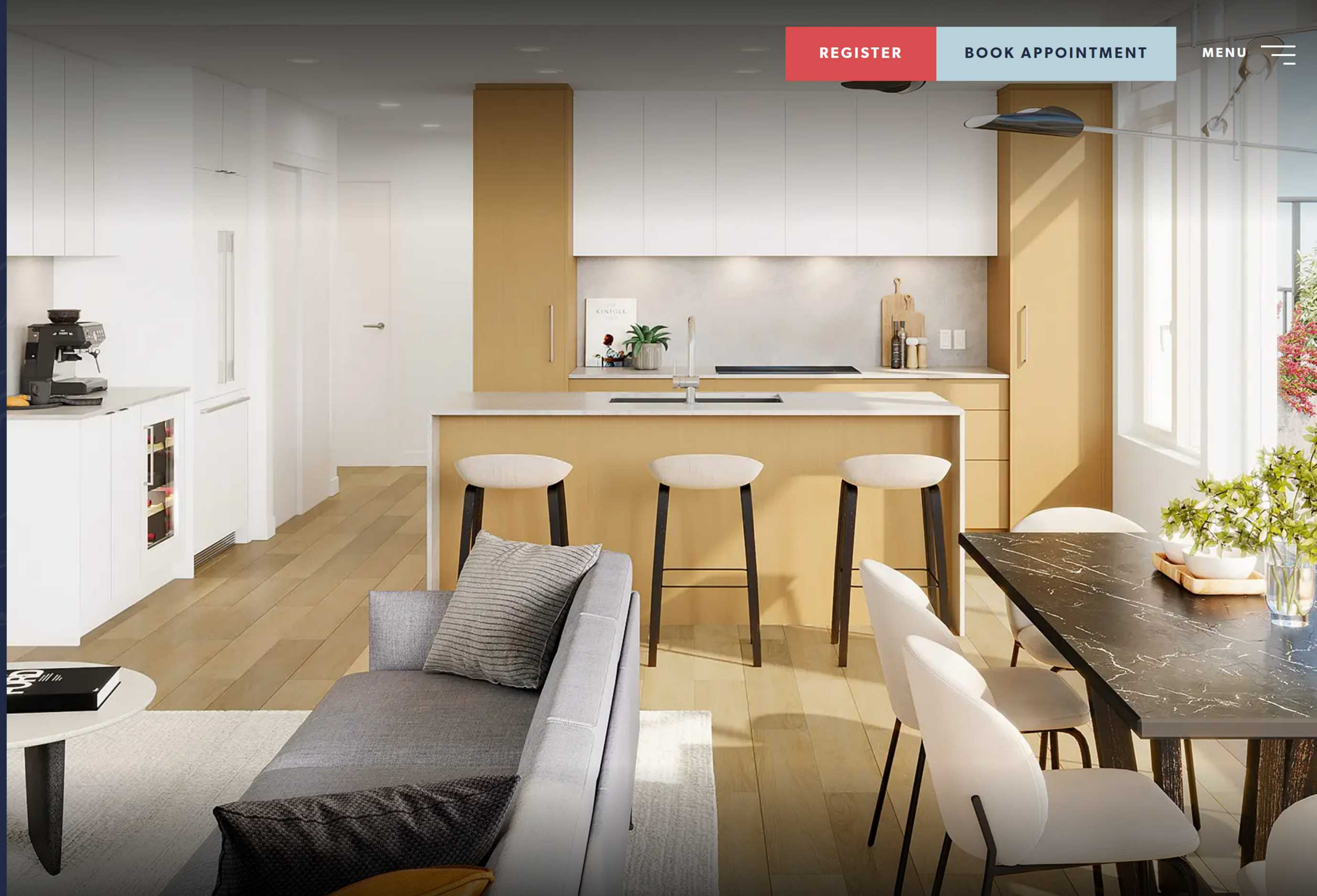
BY CHARD DEVELOPMENT



INTERIOR

ELEVATED INTERIORS

Inhabit a residence guided by sophisticated design. At NEST, enjoy heated tile flooring in primary bathrooms, a luxury Fisher & Paykel appliance package, and generous kitchens with plenty of counter space and storage. NEST's intelligent design makes your home a welcome retreat.



KITCHENS THAT COOK

Thoughtful features make meals a pleasure to prepare. ▼

Fully integrated appliance package. ▼

SUITE SPACES

Built for real living. And breathing. ▼

BEAUTIFUL BATHS

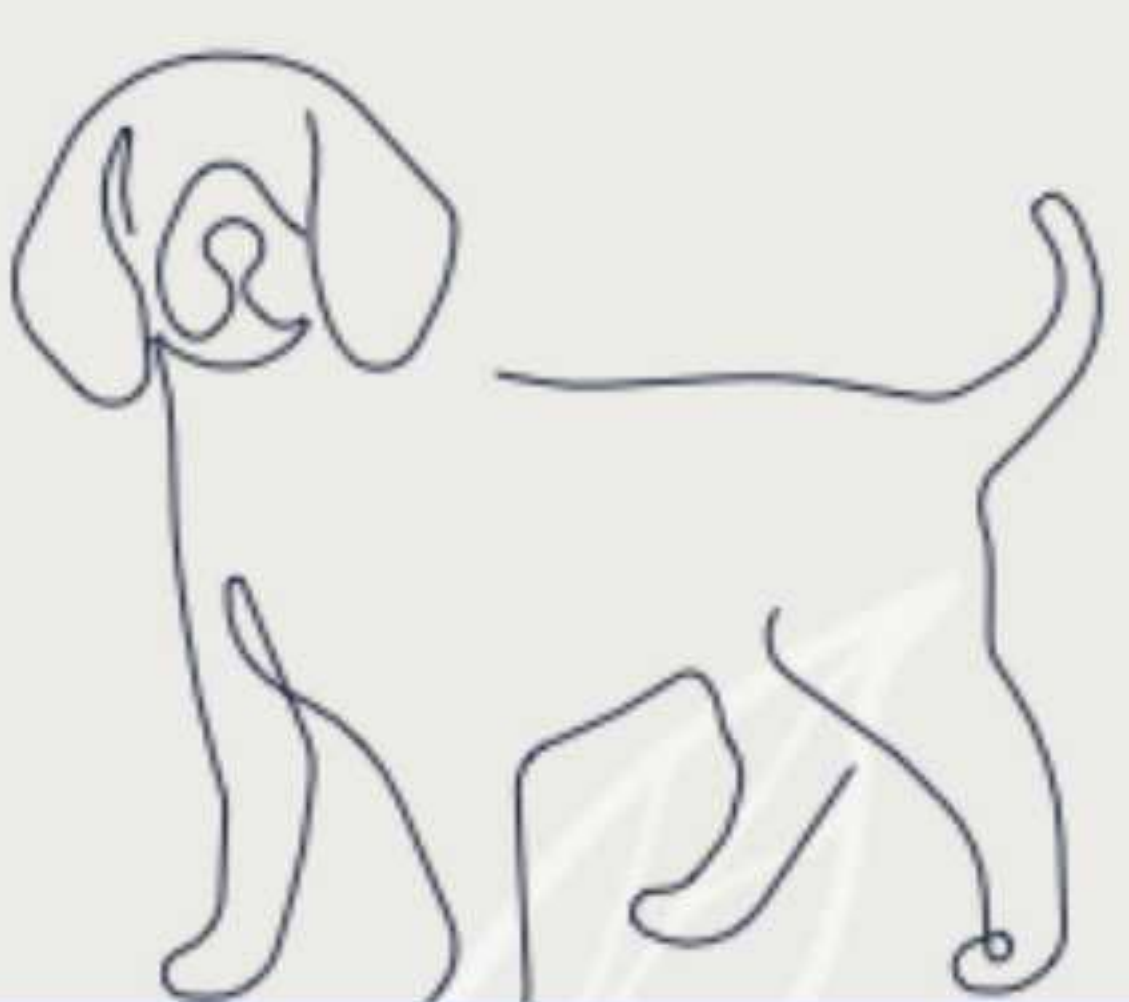
Beauty and convenience for 21st century life. ▼

[DOWNLOAD FULL FEATURE SHEET](#)



NEST

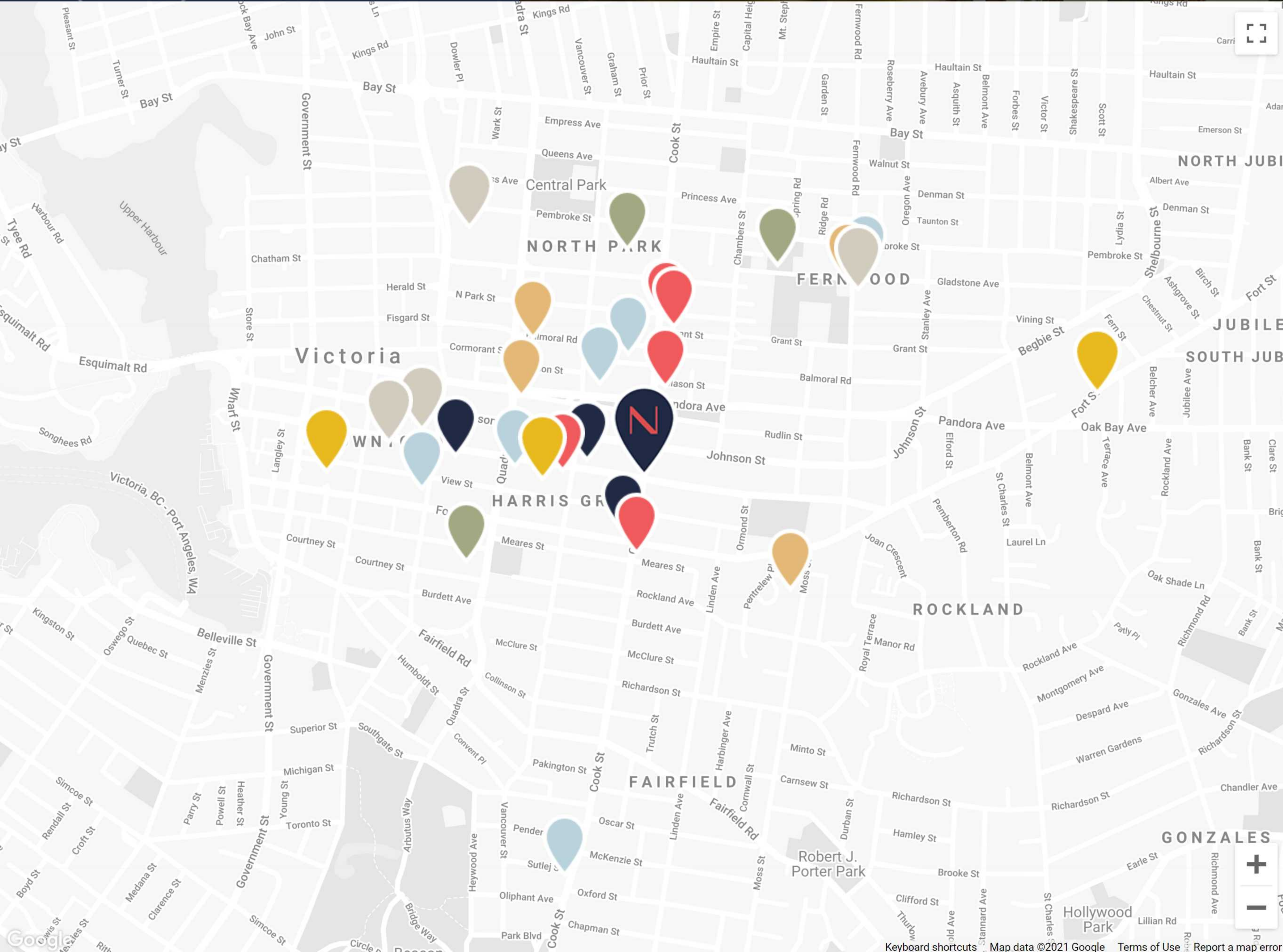
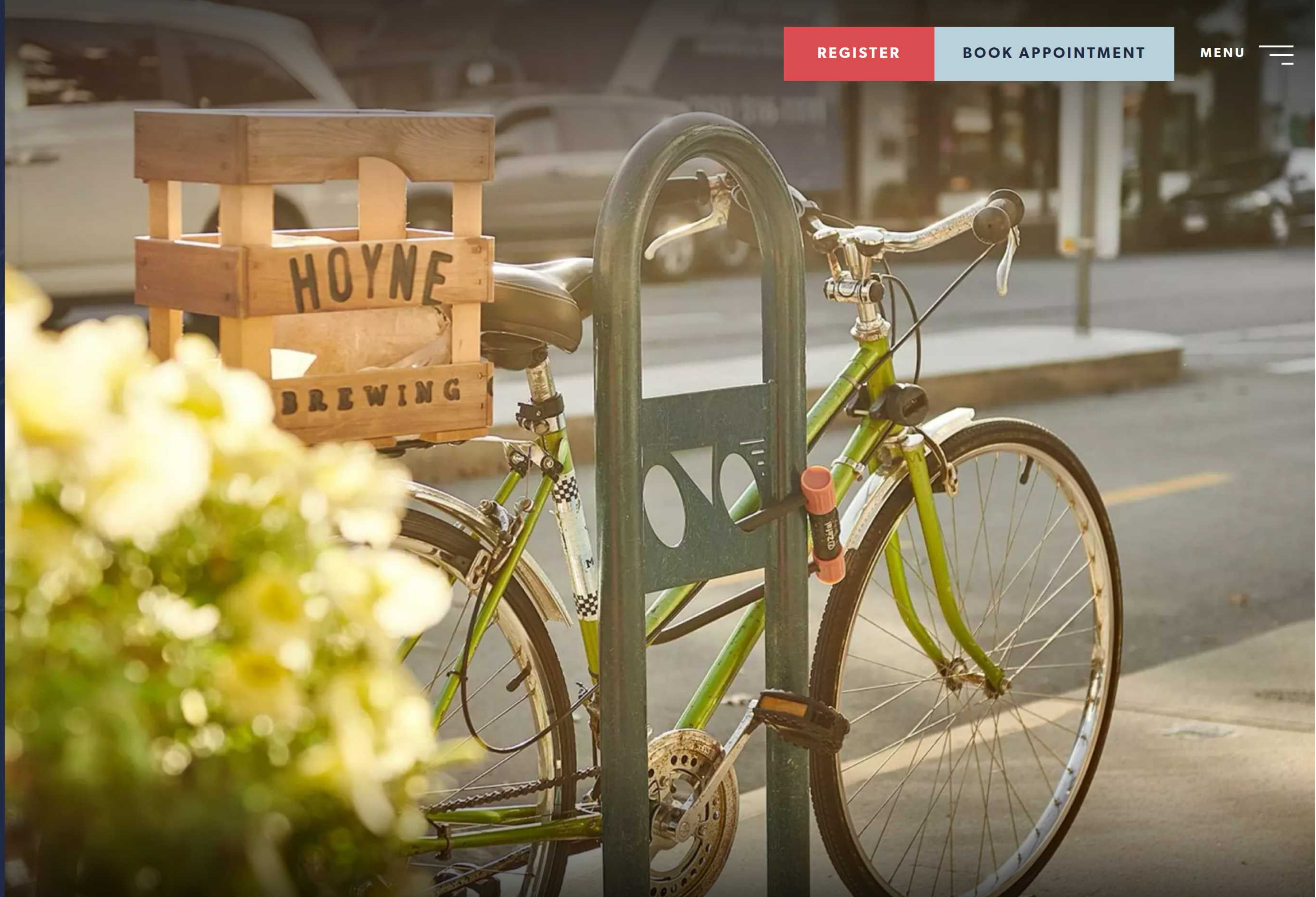
BY CHARD DEVELOPMENT



NEIGHBOURHOOD

PERFECTLY CONNECTED

Walk to Victoria's downtown Inner Harbour in 20 minutes. Stroll to Cook Street Village and grab a coffee. Or savour eclectic Fernwood Village. NEST's prime location at Cook and Yates places three incredible neighbourhoods at your doorstep and situates you in a walkable, thriving urban area with a variety of transportation options.



MEET YOUR NEW NEIGHBOURS

CONVENIENCE

- London Drugs
- Shoppers Drug Mart
- The Bay Centre

GROCERIES

- Market on Yates
- Italian Food Imports
- Save-On-Foods
- Yoka's Coffee & Honey
- Aubergine Specialty Foods
- Mother Nature's Market & Deli

COMMUNITY

- YMCA-YWCA Downtown Victoria
- Fernwood Community Centre
- Royal Athletic Park

A Near Perfect Walk Score

94

Walker's Paradise

Walk to shops, restaurants, and parks.

73

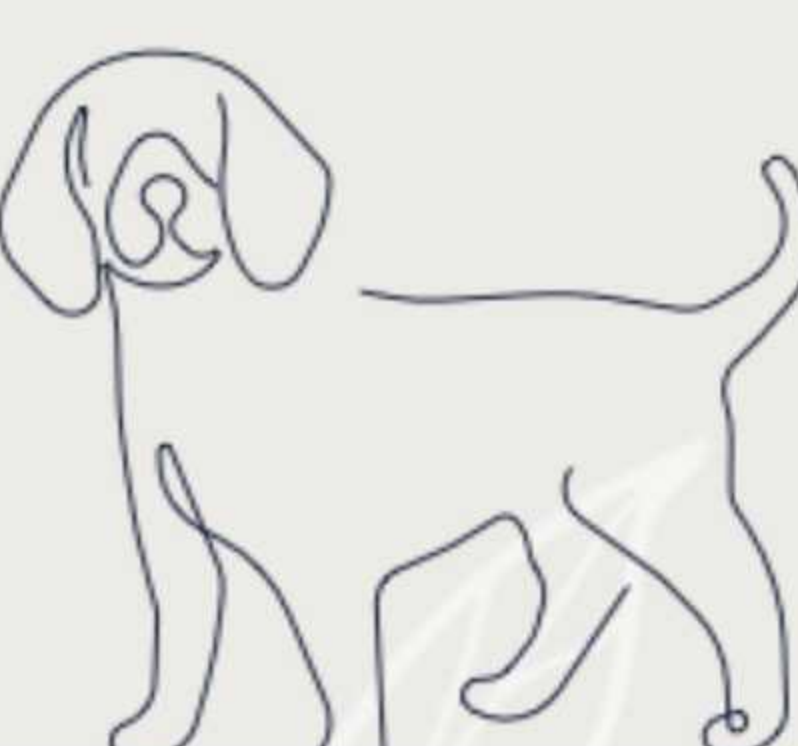
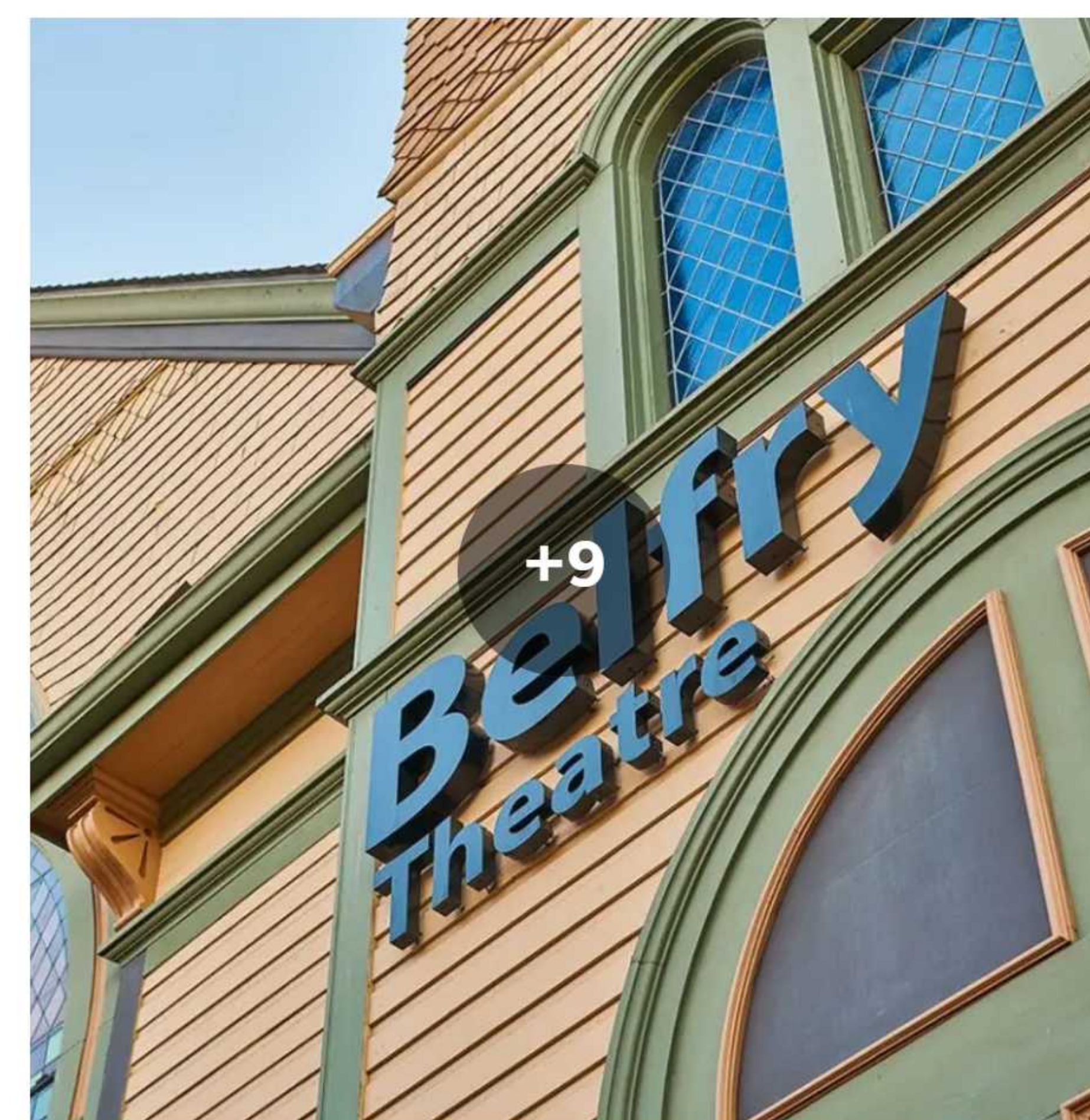
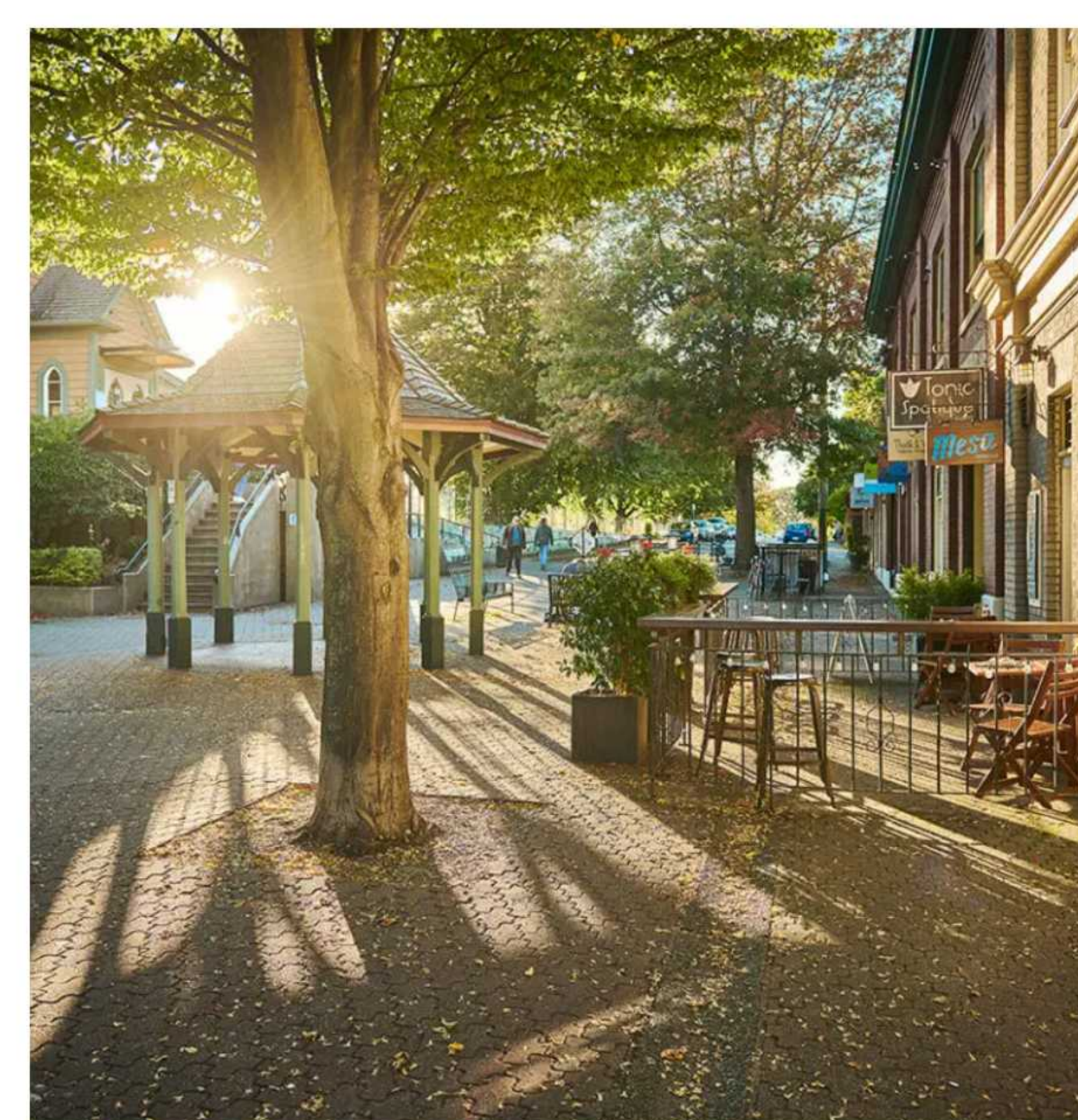
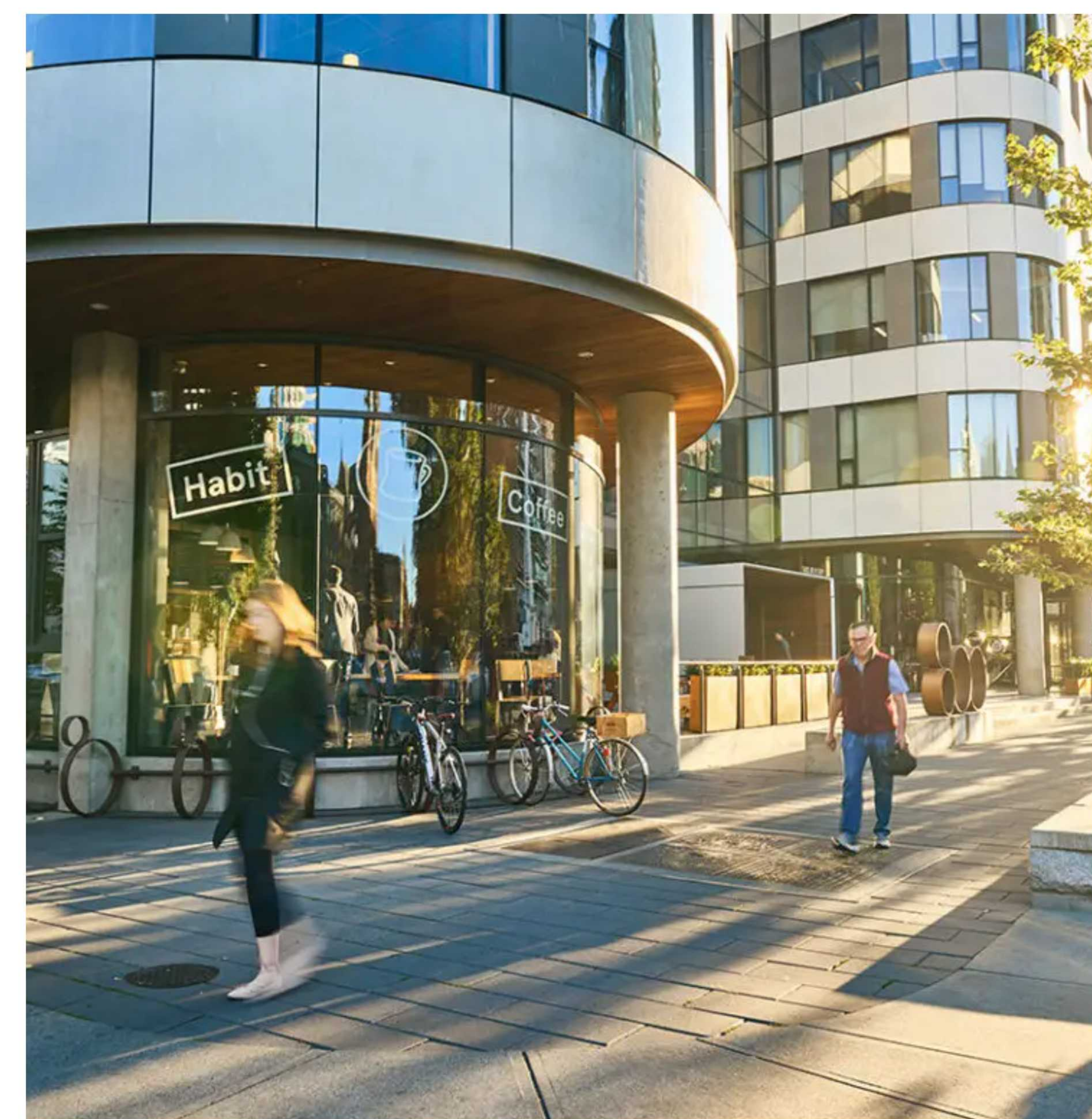
Excellent Transit

Hop on a bus to get where you need to go.

97

Biker's Paradise

Cycle down an extensive network of bike paths.



TEAM

A New Level of Excellence

The vision of Chard Development and Proscenium Architecture + Interiors, NEST reflects the best of modern living: a beautifully designed building with spacious, elegant interiors, vibrant community and retail spaces, and a landscaped outdoor gathering area. Best of all, residents can enjoy the comforts of neighbourhood life with the conveniences of the city.

Developer



Beyond Buildings

For over two decades, Chard Development has worked to initiate positive change across BC. Our tenth residential development in Victoria, NEST is designed to serve the community and foster a vibrant, livable Victoria—now and for generations to come.

Architect



Form and Function

Since 1996, Proscenium Architecture + Interiors Inc. has created real buildings that people want to inhabit. A leading designer of community and cultural facilities across Western Canada, we design spaces that are not only functional but also genuinely interesting.



NEST

BY CHARD DEVELOPMENT

