



Home / Homes at Tresah

## Homes at Tresah

Tresah is located in the heart of Victoria's Midtown neighbourhood and consists of two multi-family residential buildings characterized by richly coloured brick-clad bases and luminous warm white facades over one level of underground parking. With new homes starting as low as \$299,000, the West building is a 12-storey Mass Timber market mid-rise containing 179 homes, and the East building is a 6-storey wood-framed building with 66 homes for sale.

[Tresah West Features >](#)

[Tresah East Features >](#)



**BOOK A TOUR TODAY!**

West 40% Sold | East 75% Sold



### NOW SELLING!

**Tresah West**, Victoria's First Mass Timber Condos

[Contact us Today!](#)



Welcome to a **sustainable future.**

Welcome to **your neighbourhood.**

Welcome to a **worthy investment.**

Welcome to **Tresah.**

Welcome **home.**

**Curious?** Let us tell you more.

[Contact our Team Today](#)

Follow **Tresah** on Social media



Instagram



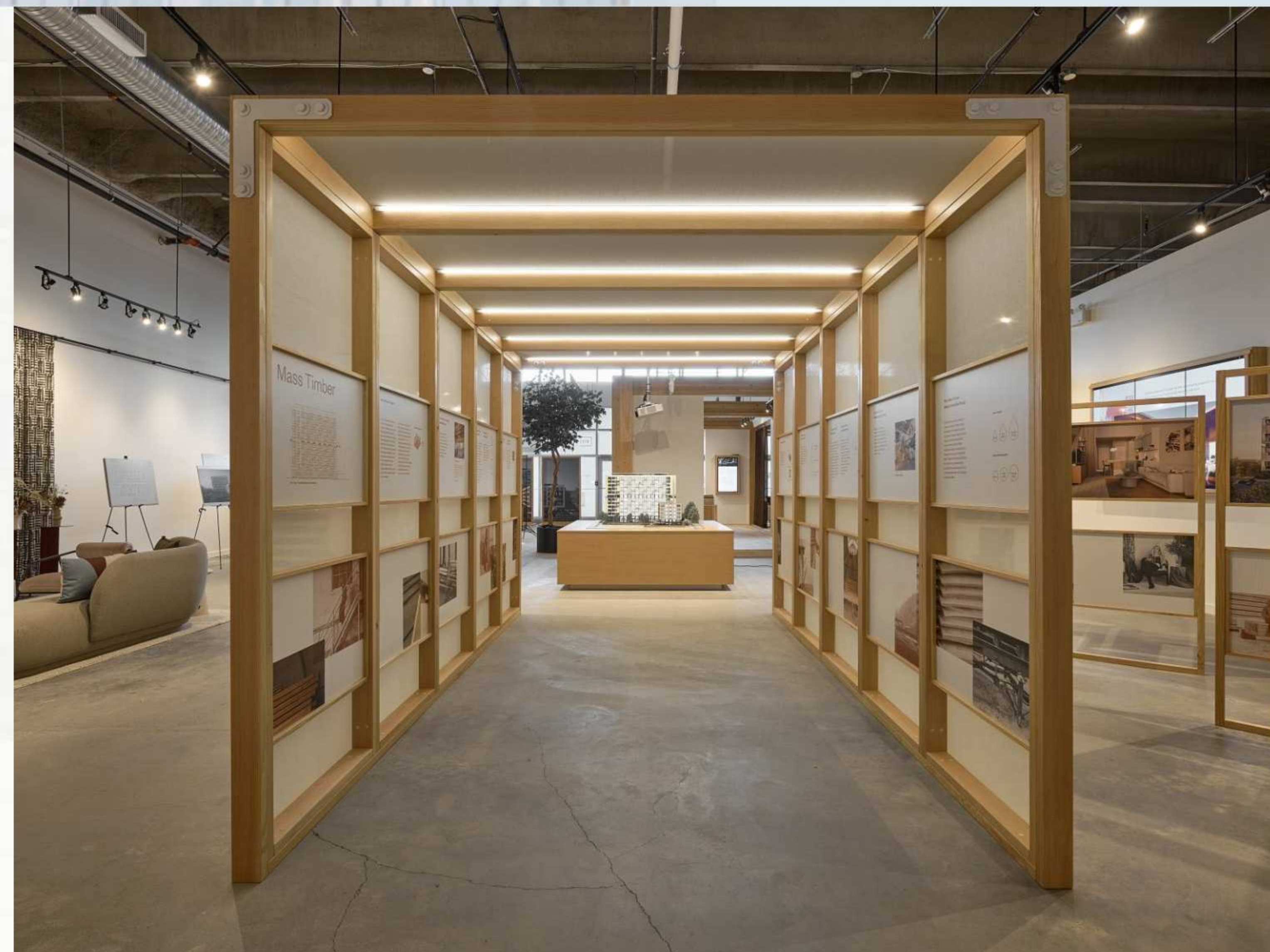
Facebook



Home / Mass Timber

## Tresah is Victoria's first mass timber condo development.

As we move toward a more sustainable way of life in our everyday activities, it only makes sense that we also consider where we live. Our choice of home and how it is constructed can significantly reduce our overall environmental impact. Tresah is built from wood from here for here and believes that supporting local industry and sustainability is necessary for progress.



### What is Mass Timber?

Wood is the most abundant and naturally renewable building material on the planet and takes the least amount of energy to produce than any other building material. Mass Timber offers all the engineering benefits of traditional reinforced concrete construction while at the same time reducing the carbon emissions on production and with the added capacity to store carbon long-term (centuries) rather than emit carbon as concrete and steel do.

The two primary Mass Timber technologies that will be used to build Tresah are cross-laminated timber (CLT) and glue-laminated timber (glulam; GLT). CLT is fabricated from laminating lumber in perpendicular layers, resulting in strong panels that are ideal for building floors, walls, and roofs. Glulam is made by bonding individual pieces of lumber together with durable, moisture-resistant structural adhesives to form columns, beams, and headers

### Benefits of Mass Timber

#### Sound Performance

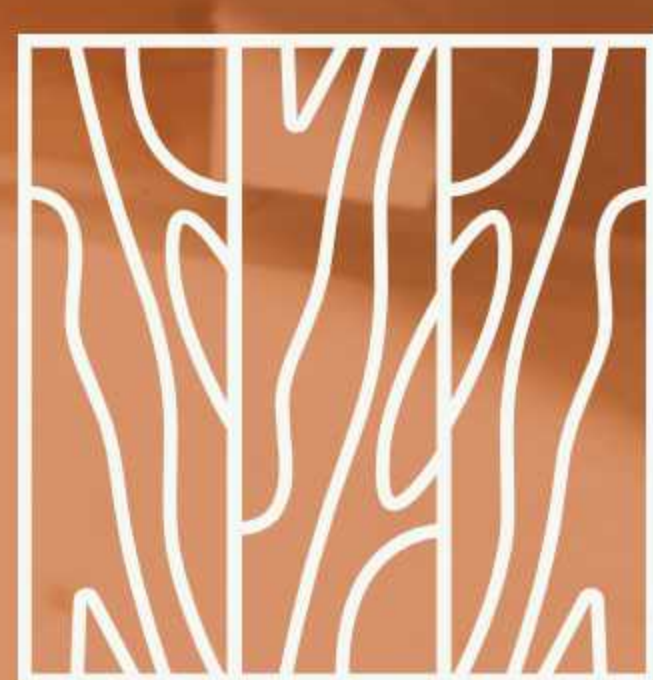


Mass Timber building materials do not conduct sound as well as concrete or steel, creating buildings that are quieter than traditional concrete and steel construction. With appropriate attention to detail in the design and construction of floor and wall assemblies, Mass Timber buildings can deliver high acoustic performance and reduced sound transmission, creating a comfortable, quiet living environment.

#### Happiness & Well-Being



#### Superior Insulator



#### Affordability



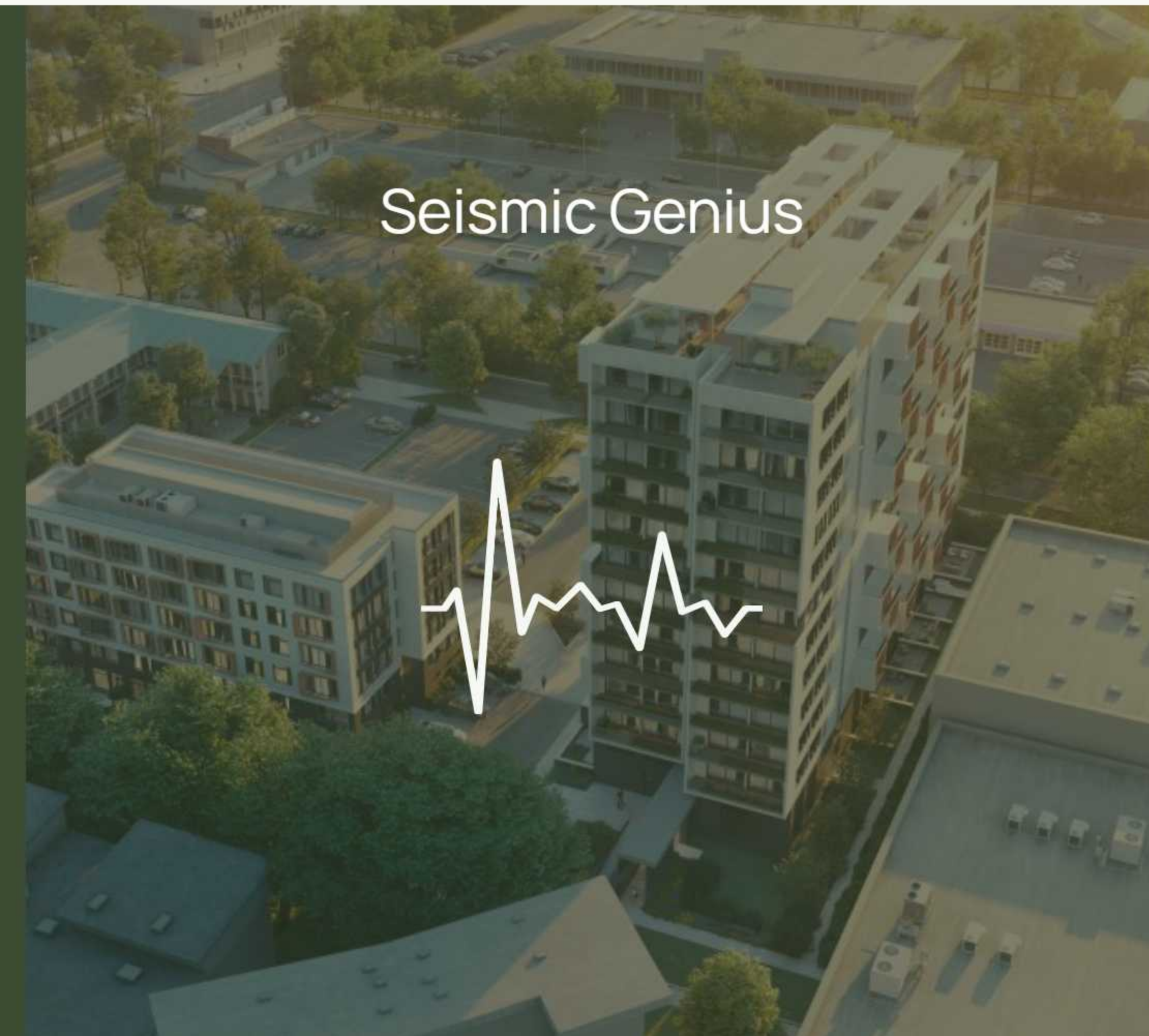
Mass Timber's lighter weight, reduced impact on the ground and prefabricated building assembly have the potential to lower construction costs and shorten construction timelines, ultimately helping to address affordability. With the expected increase in carbon pricing, Mass Timber's lower carbon emittance will also contribute to the affordability of building with wood compared to concrete and steel.

#### Fire Safe

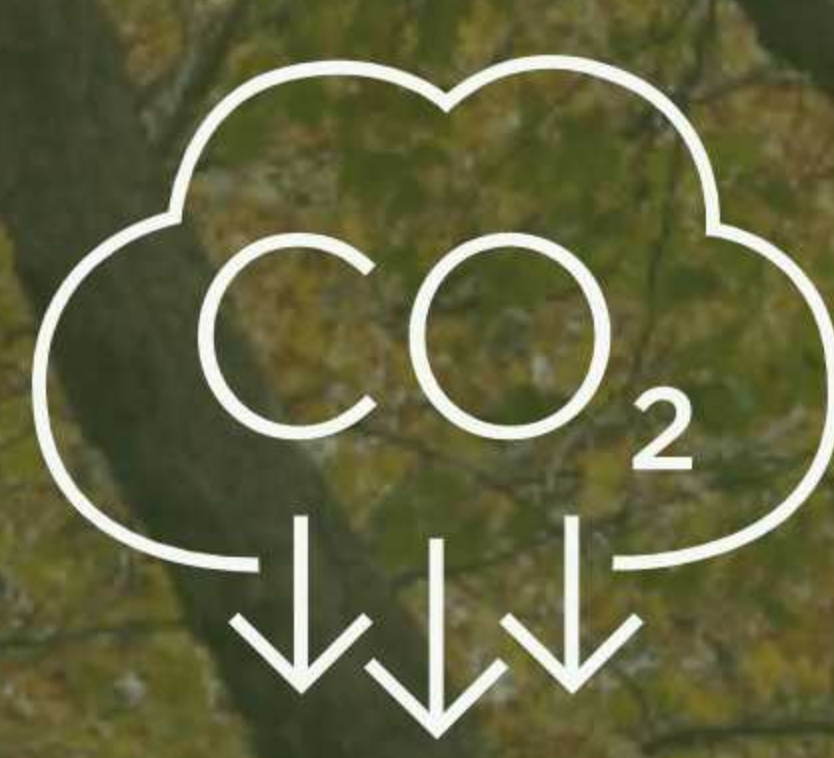


Significant testing of Mass Timber elements has confirmed they can be engineered to meet or exceed building codes requirements for fire safety. The sheer size of mass timber is the most significant factor in its fire safety performance.

#### Seismic Genius



#### Carbon Master



#### Stellar Embodied Energy



**BOOK A TOUR TODAY!**

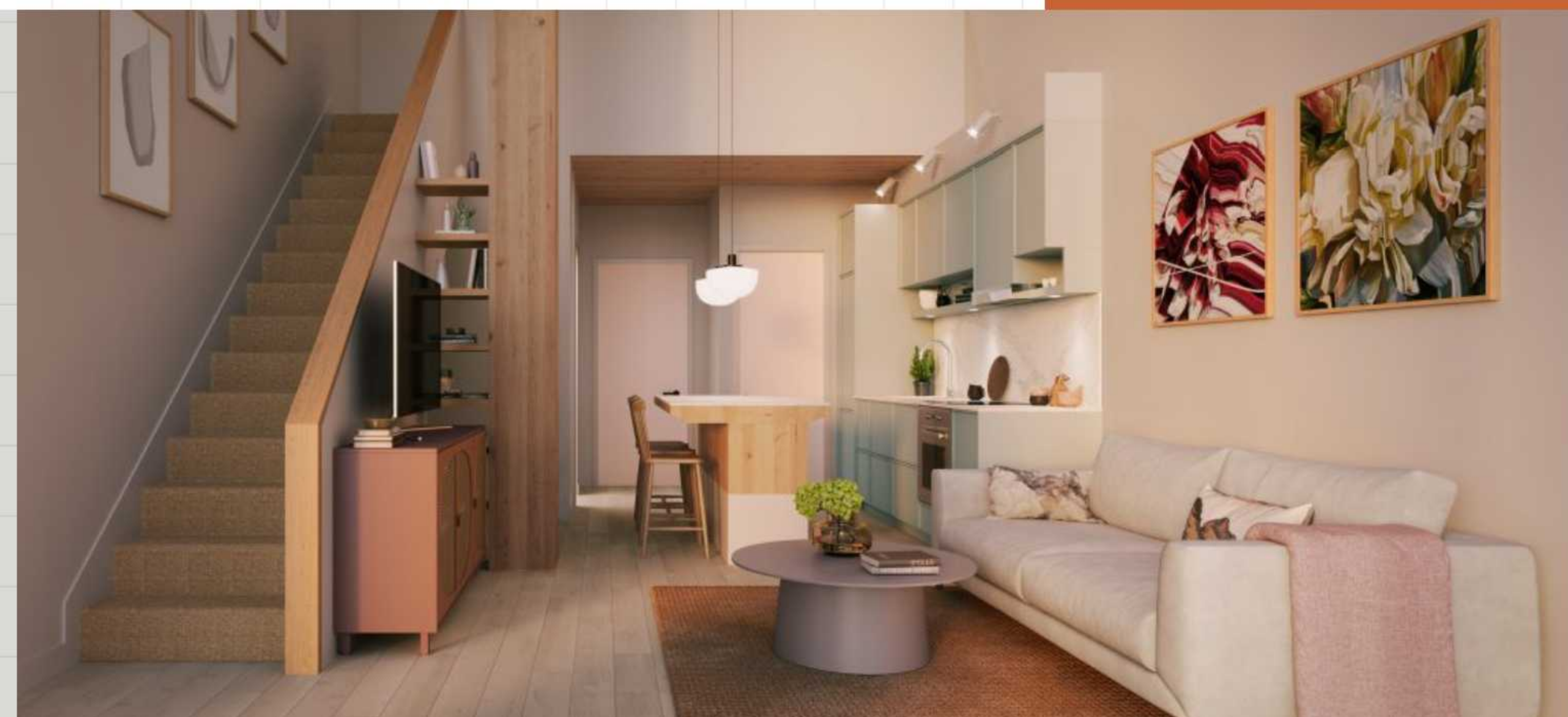
West 40% Sold | East 75% Sold



### NOW SELLING!

**Tresah West, Victoria's First Mass Timber Condos**

Contact us Today!



Welcome to **a sustainable future.**  
 Welcome to **your neighbourhood.**  
 Welcome to **a worthy investment.**  
 Welcome to **Tresah.**  
 Welcome **home.**

**Curious?** Let us tell you more.

Contact our Team Today

Follow Tresah on Social media

Instagram Facebook

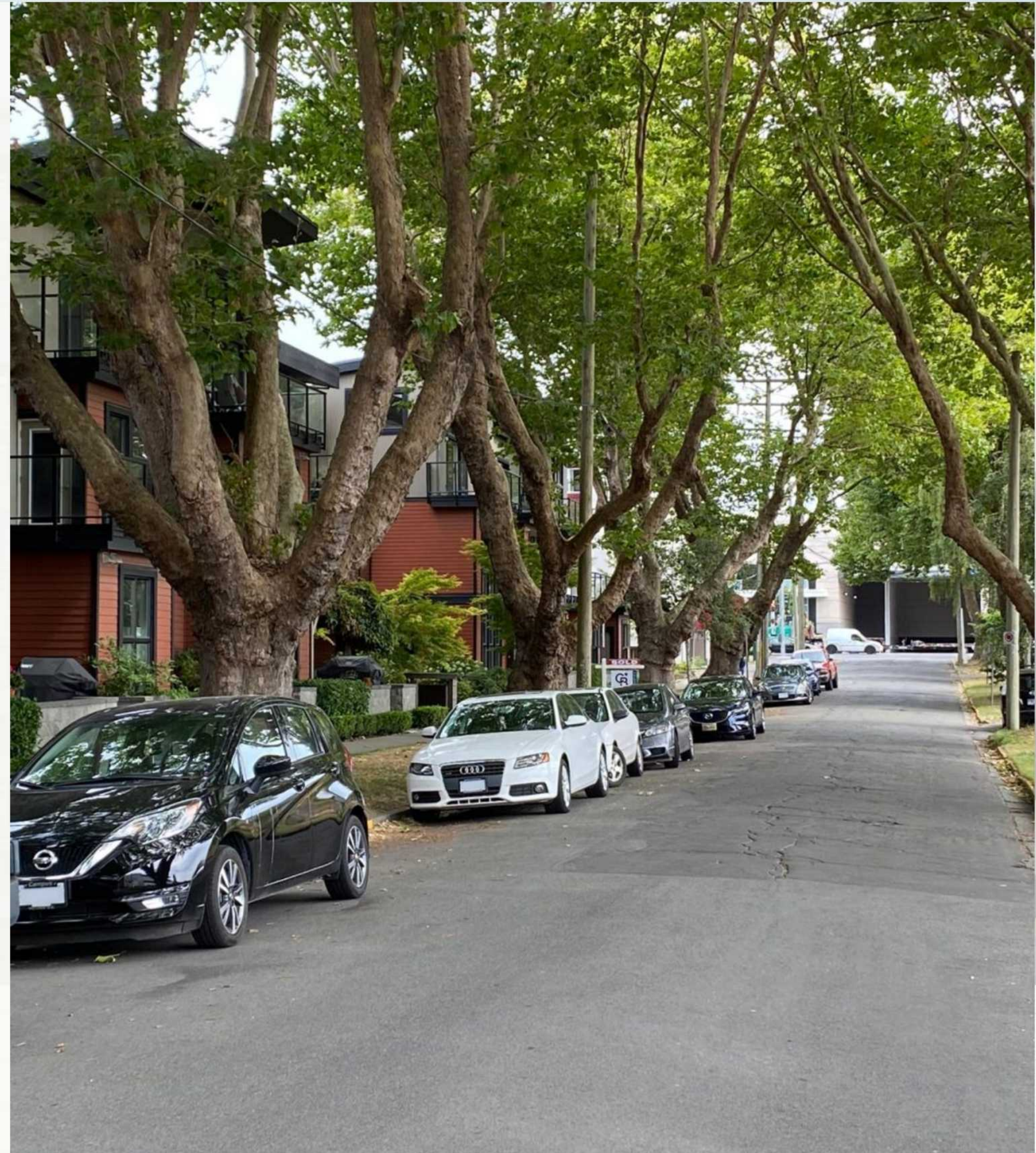
Home / Neighbourhood

## Welcome to your neighbourhood.

Call it what you want Midtown, Mayfair, or Burnside – it's a cool neighbourhood.

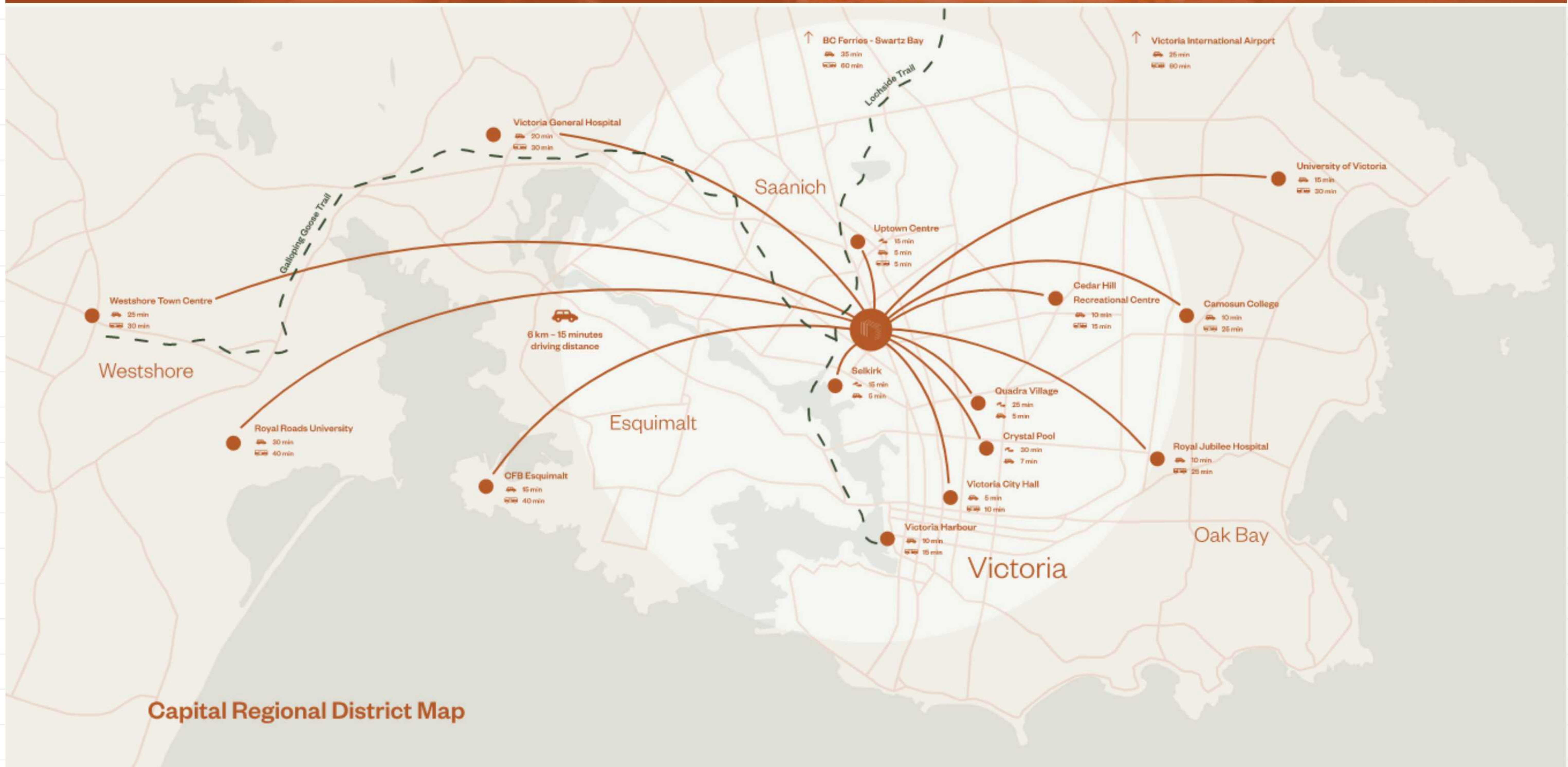
Steeped in history, Tresah's community is part of Victoria's diverse fabric. A dynamic part of the city with a blend of industry, trades, makers, and artisans that help drive Victoria's economic engine. This marriage of old and new has created the foundation for Tresah's values and goals. Looking to the future potential of a neighbourhood, while taking cues from its past.

As the Mayfair District continues to grow, this area will be home to much of Victoria's residential and commercial growth and offers an exciting opportunity for early investment into a new condo development in one of Victoria's most vibrant and accessible communities.



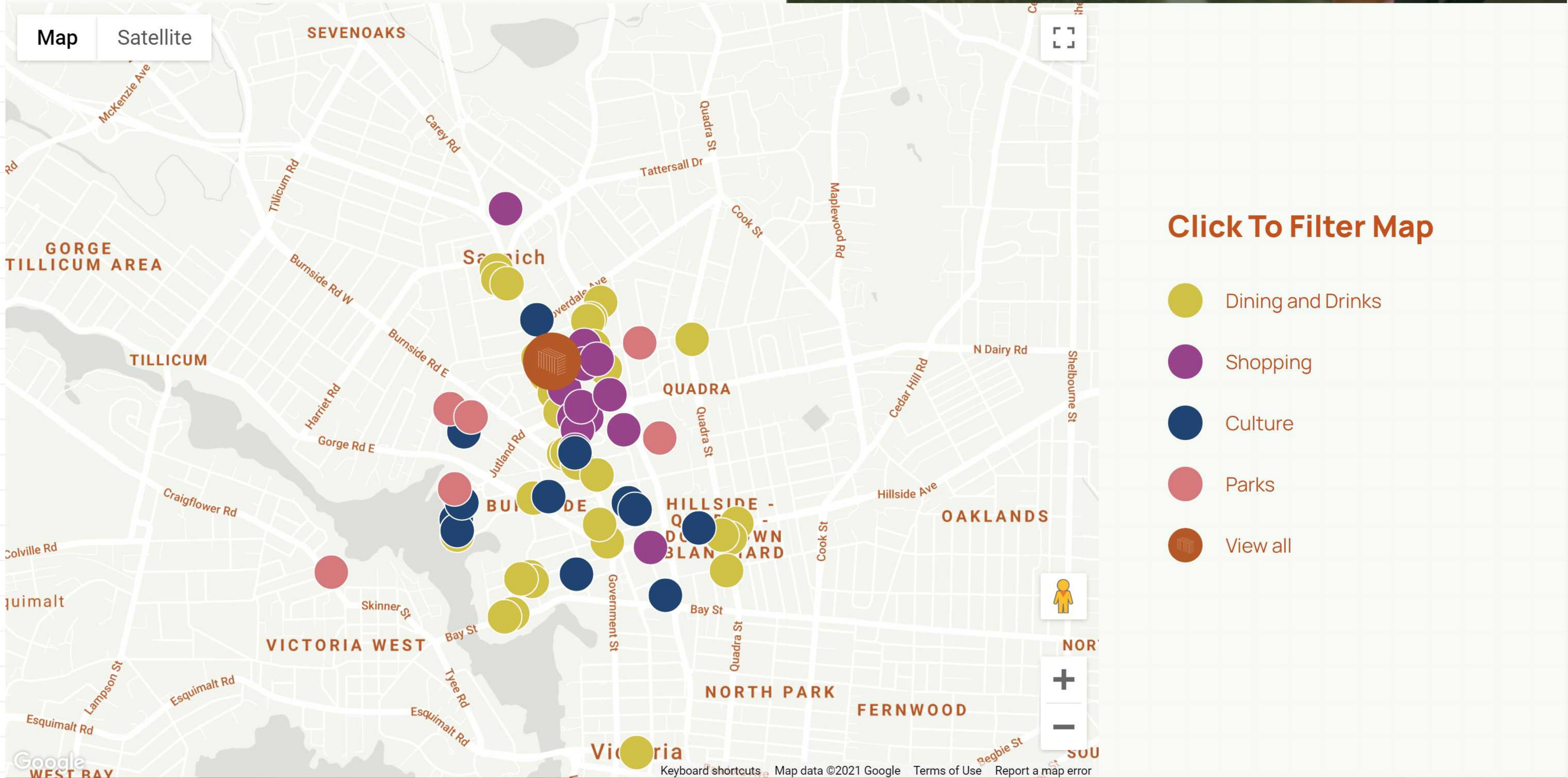
## Welcome to being in the middle of it all

For those who need to be everywhere and anywhere in the region, Tresah's new condos are well connected within Victoria and the Capital Regional District by foot, bike, public transit or car.



## Tresah is at the intersection of wonderfully cool things

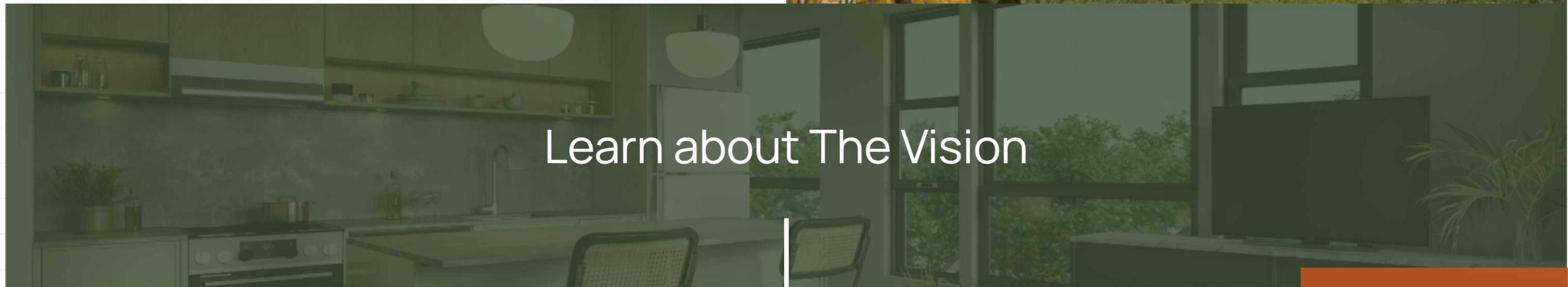
With industrial roots, this well ultra-diverse and growing neighbourhood offers a unique mix of industry, green spaces, and heritage charm. Also known as Burnside-Gorge, this neighbourhood has shops, cafés, restaurants, groceries, and micro-breweries easily accessible on foot or bicycle.



Located across the street is Victoria's Mayfair Shopping Centre, one of the largest retail centres in the city known for its major retailers, fashion and events. Tresah is also just a few blocks away from Uptown Shopping Centre, a hub for commerce and culture with a mix of shops, restaurants and entertainment.

## Nature Just a Step Away

Just a short walk away is the Galloping Goose Trail which connects cyclists and pedestrians into Victoria's downtown collection of local boutiques and surrounding parks, including the Gorge Waterway, a favourite spot for waterfront dining and drinks, watersports, swimming and park spaces.

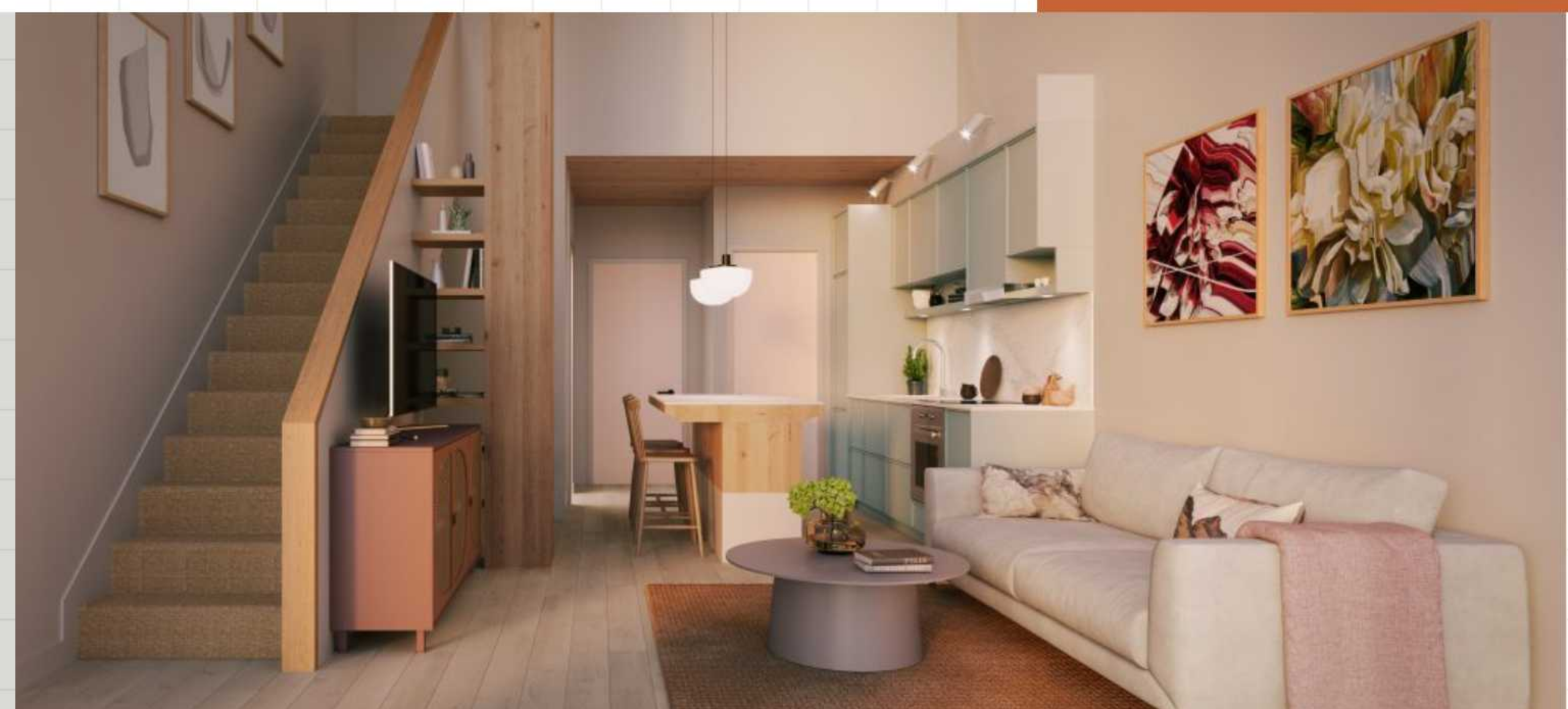


Learn about The Vision

[BOOK A TOUR TODAY!](#)  
West 40% Sold | East 75% Sold

**NOW SELLING!**  
**Tresah West, Victoria's First Mass Timber Condos**

[Contact us Today!](#)



Welcome to a **sustainable future.**  
Welcome to your **neighbourhood.**  
Welcome to a **worthy investment.**  
Welcome to **Tresah.**  
Welcome **home.**

Curious? Let us tell you more.

[Contact our Team Today](#)

Follow Tresah on Social media

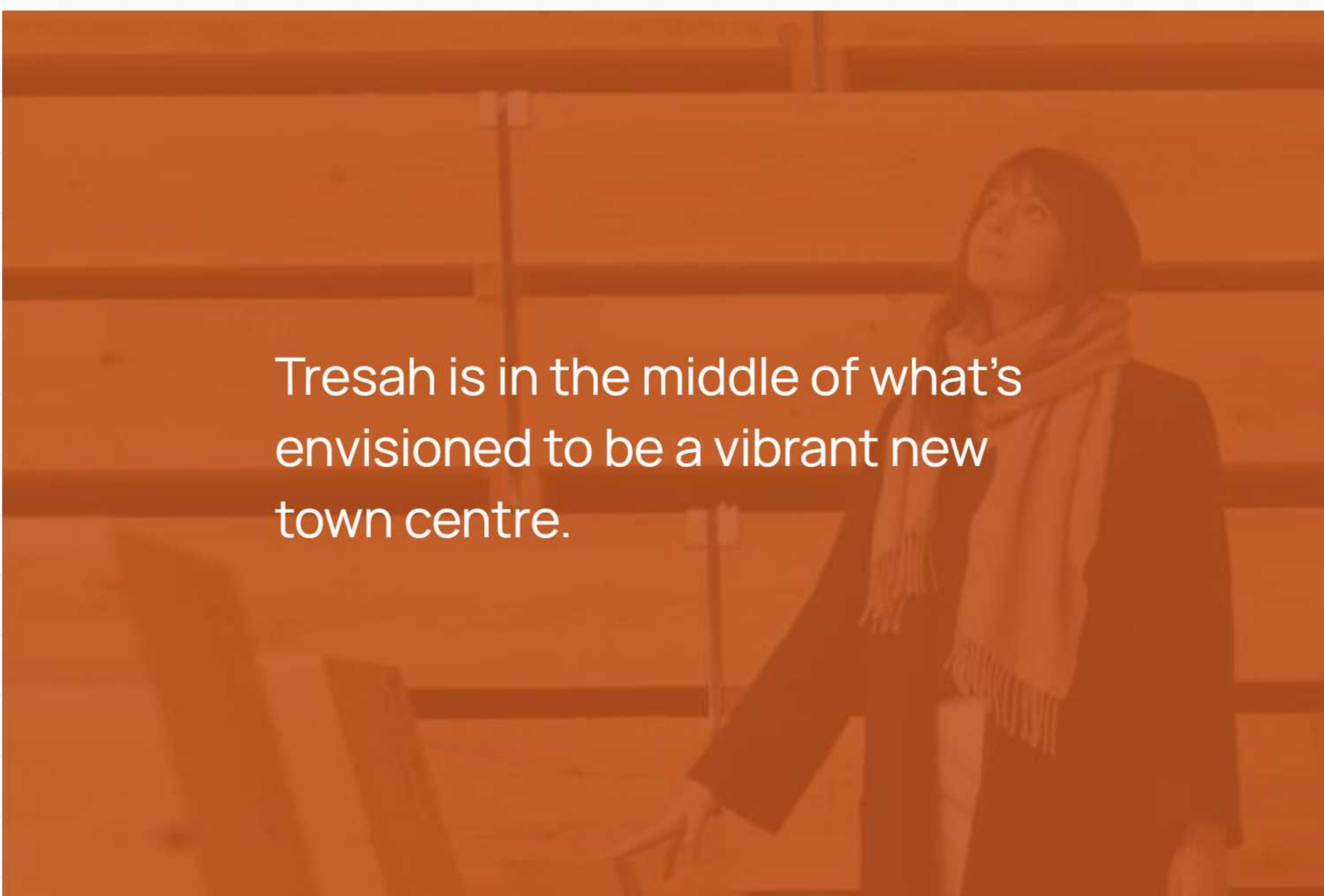
[Instagram](#) [Facebook](#)



Home / The Vision

## The Mayfair District is an important part of the City of Victoria's vision for the future.

Soon to be the home of substantial residential and commercial growth, the city has a goal of creating dynamic, ultra-diverse neighbourhood pockets close to transit, parks, entertainment, employment, shopping, and community services. The city's 2014 Official Community Plan has aptly named the Mayfair Town Centre area for redevelopment.



Tresah is in the middle of what's envisioned to be a vibrant new town centre.

For Mike Geric Construction, Tresah is more than a building, it is a symbol of what is possible. A fusion of industry, nature, and neighbourhood, Tresah marks a new chapter in the history of development in our city. A progressive and dynamic first-of-its-kind Mass Timber project in Victoria, BC, Canada, Tresah serves as an example of how we can build new infrastructure, transition to a cleaner economy, and use local wood to create comfortable, healthy living spaces and energy-efficient homes.

**Welcome to Tresah.**

### We've been here for 50 years, and we'll be here for 50 more

The Geric family has been building quality homes in Victoria and Saanich for more than 50 years. They are invested in the community they call home, they are innovators and leaders in wood-frame construction, and they are dedicated to incorporating new, sustainable technologies into their developments.

Thoughtful and responsible planning, design, and construction are at the heart of every Mike Geric Construction development. With a strong reputation as a trusted local developer, Mike Geric Construction has nurtured relationships with their neighbours, customers, team, and collaborators to continually build developments that are welcomed by and contribute to communities.

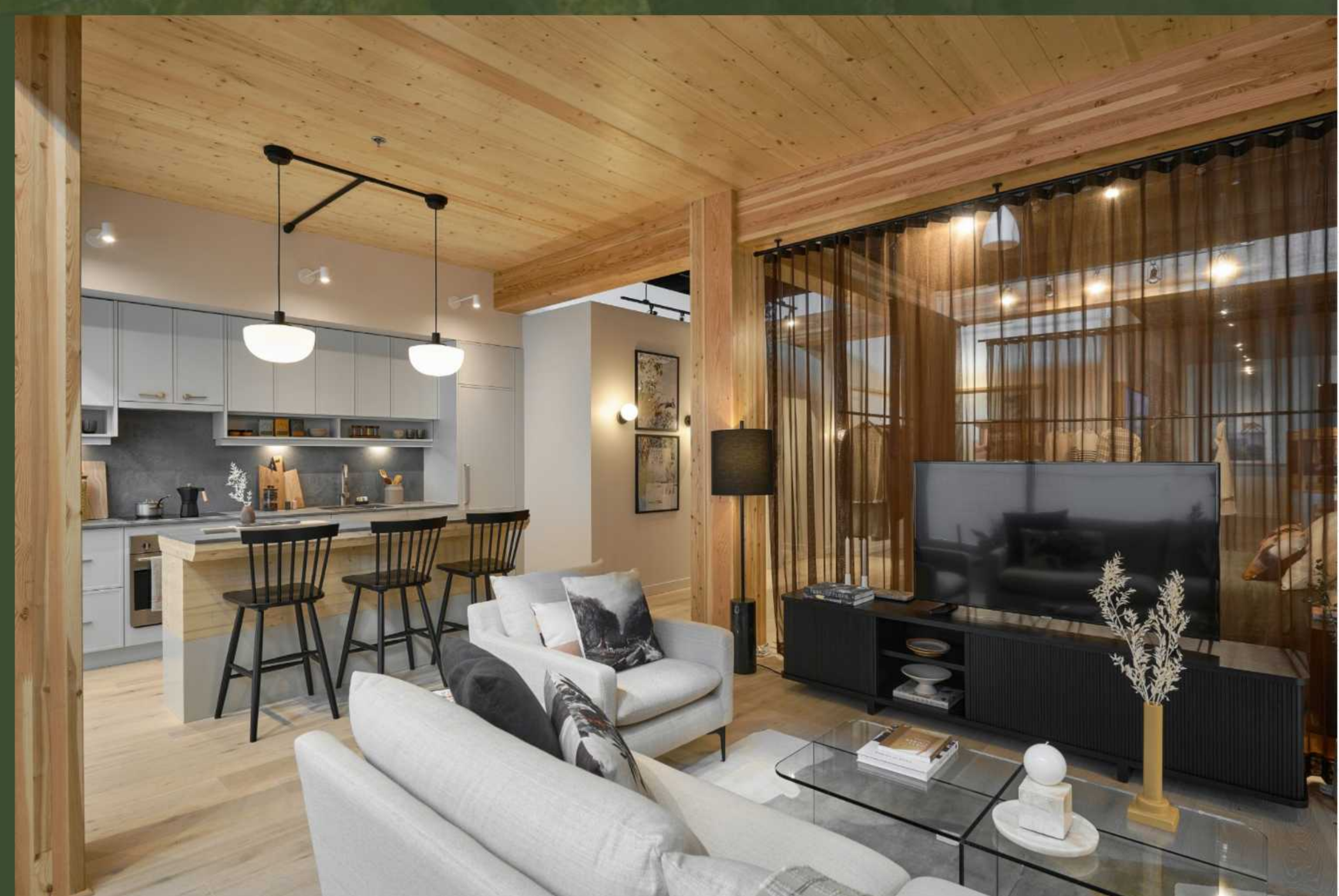


### Tresah is the future of building technology

There is room for urban growth without contributing to the threat of a warming planet, but it takes smart design, sustainable materials, and a responsible approach to building. Luckily, Mass Timber construction offers us an opportunity to accomplish these goals.

Wanting to build something unique, beautiful, and future-proof, Mike Geric Construction assembled an innovative and forward-thinking team and tasked them with rethinking conventional development in the City of Victoria.

The result? A new urban development that doesn't believe in the ordinary. Tresah is a signature project conceived from the ground up to address two core elements that are critical to the future of our city: future-proof, sustainable building technology and climate-conscious urban development.



### Project Team

**Mike Geric Construction**  
Owner/Developer

**D'Ambrosio Architecture + Urbanism**  
Architect

**Farmer Construction**  
General Contractor

**Kinsol Timber Systems**  
Mass Timber Specialist

**Studio Roslyn**  
Interior Design & Creative

**Aryze Developments**  
Development & Marketing Management

**RJC Engineers**  
Structural Engineer

**Avalon Mechanical Consultants Ltd**  
Mechanical Engineer

**AES Engineering Ltd**  
Electrical Engineer

**Keith Grant Landscape Architecture Ltd**  
Landscape Architect

**Ryzuk Geotechnical**  
Geotechnical Engineer

**JE Anderson & Associates**  
Civil/Survey Engineer

**GHL Consultants Ltd**  
Code Consultant

**Morrison Hershfield**  
Building Envelope



## Learn about Mass Timber

**BOOK A TOUR TODAY!**  
West 40% Sold | East 75% Sold →

**NOW SELLING!**  
**Tresah West, Victoria's First Mass Timber Condos**

[Contact us Today!](#)



Welcome to **a sustainable future.**  
Welcome to **your neighbourhood.**  
Welcome to **a worthy investment.**  
Welcome to **Tresah.**  
Welcome **home.**

**Curious?** Let us tell you more.

[Contact our Team Today](#)

Follow **Tresah** on Social media

[Instagram](#) [Facebook](#)



Home / Contact

## Contact Tresah

### NEW LOCATION!

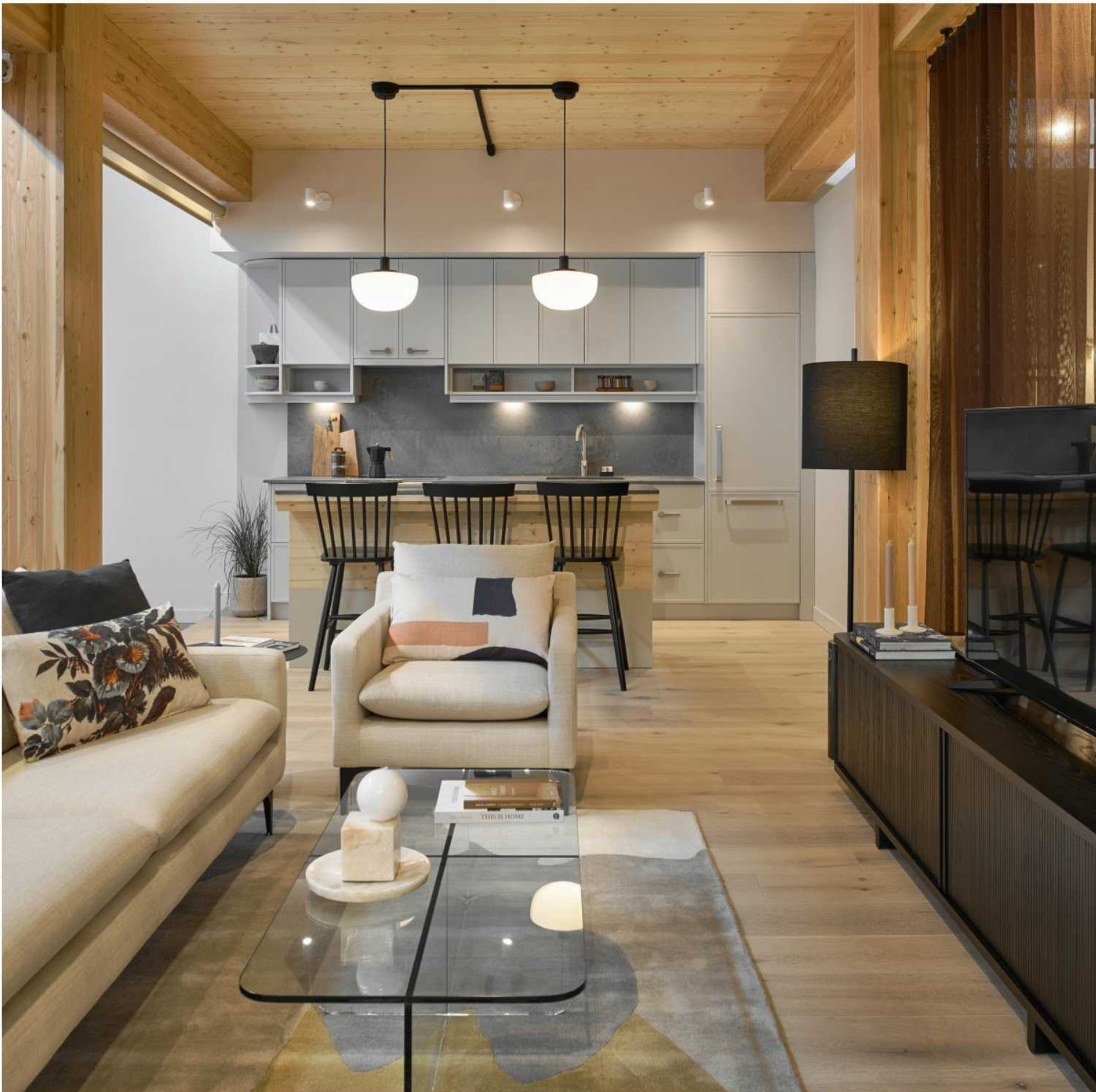
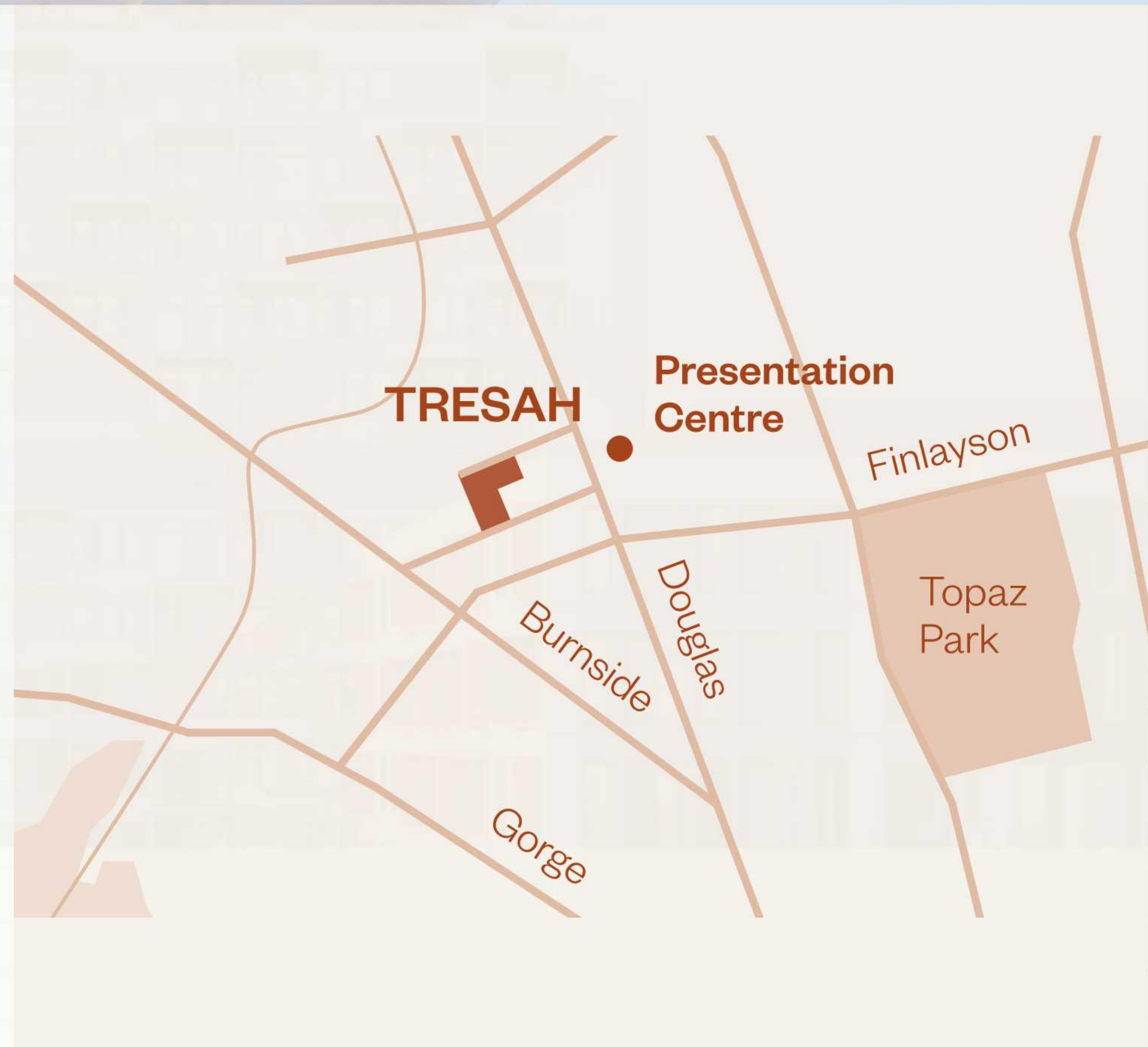
Tresah is now open daily at our new presentation centre. We're still at Mayfair Mall – find us next to Sport Chek! Drop in for a tour or contact the sales team for a private appointment.

@ info@tresah.ca

☎ 250-532-7177

🏠 Mayfair Shopping Centre - 3147 Douglas St. Victoria BC

🕒 Monday - Saturday 11-6 & Sunday 11-5



### Private Appointments, Virtual Appointments & Inquiry Form

Fill out the form below to request a private appointment, or to reach our sales team directly with your questions.

Name \*

Email \*

Phone

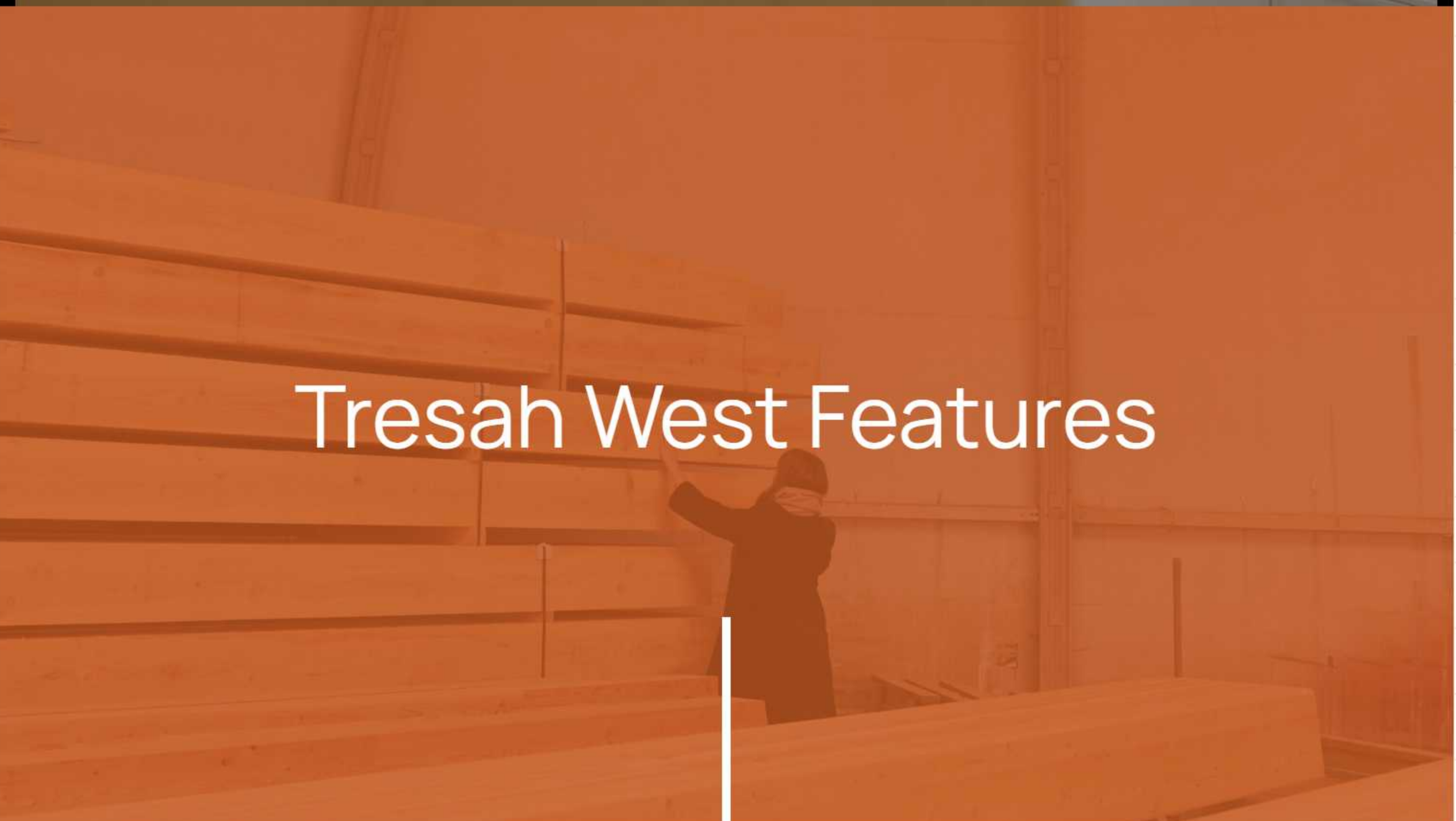
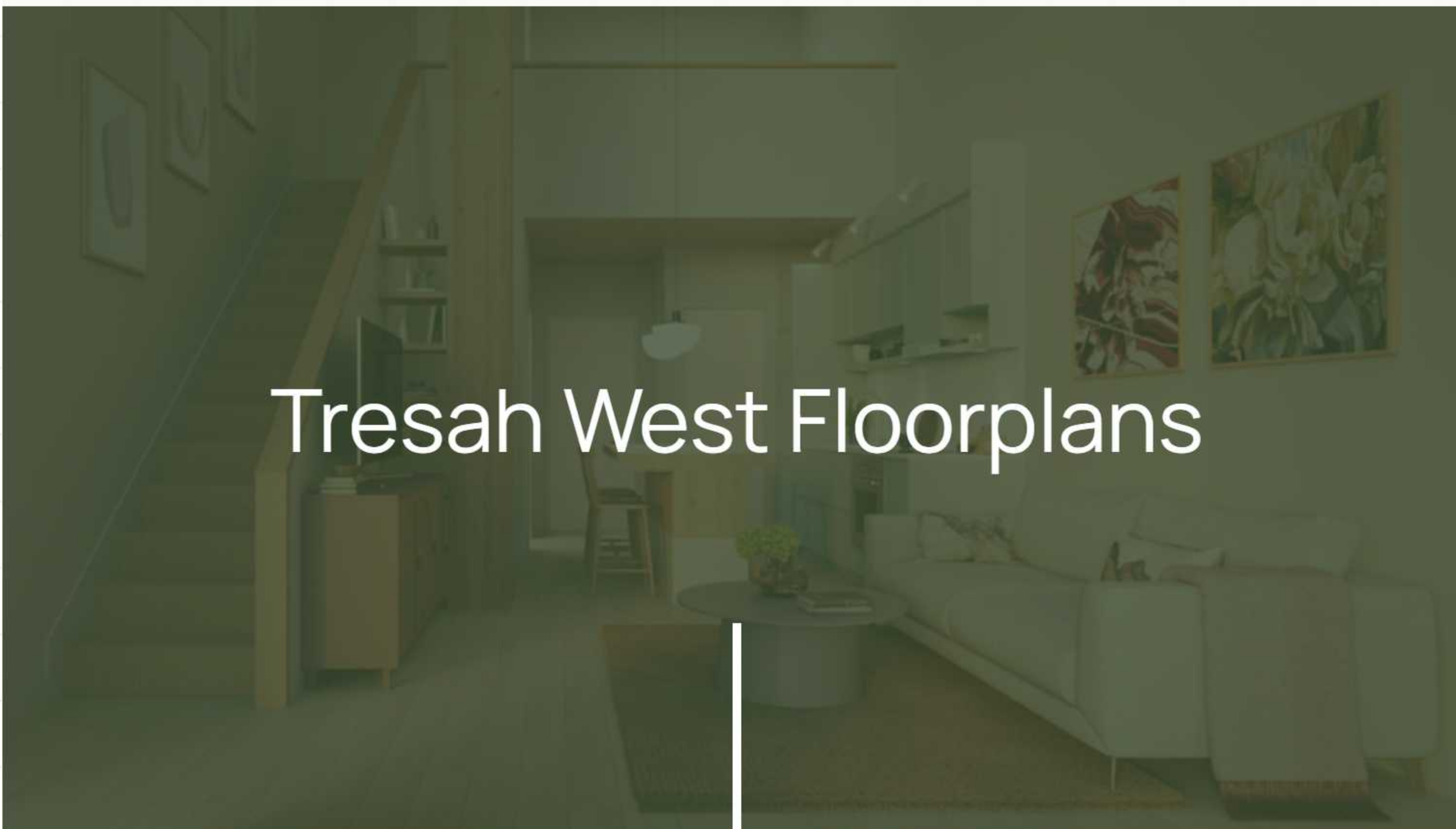
Questions or Comments \*

Submit

### Be the First to Know...

If you would like to stay up to date with what's happening at Tresah, register below to join our mailing list. Registrants are first to receive project information and updates.

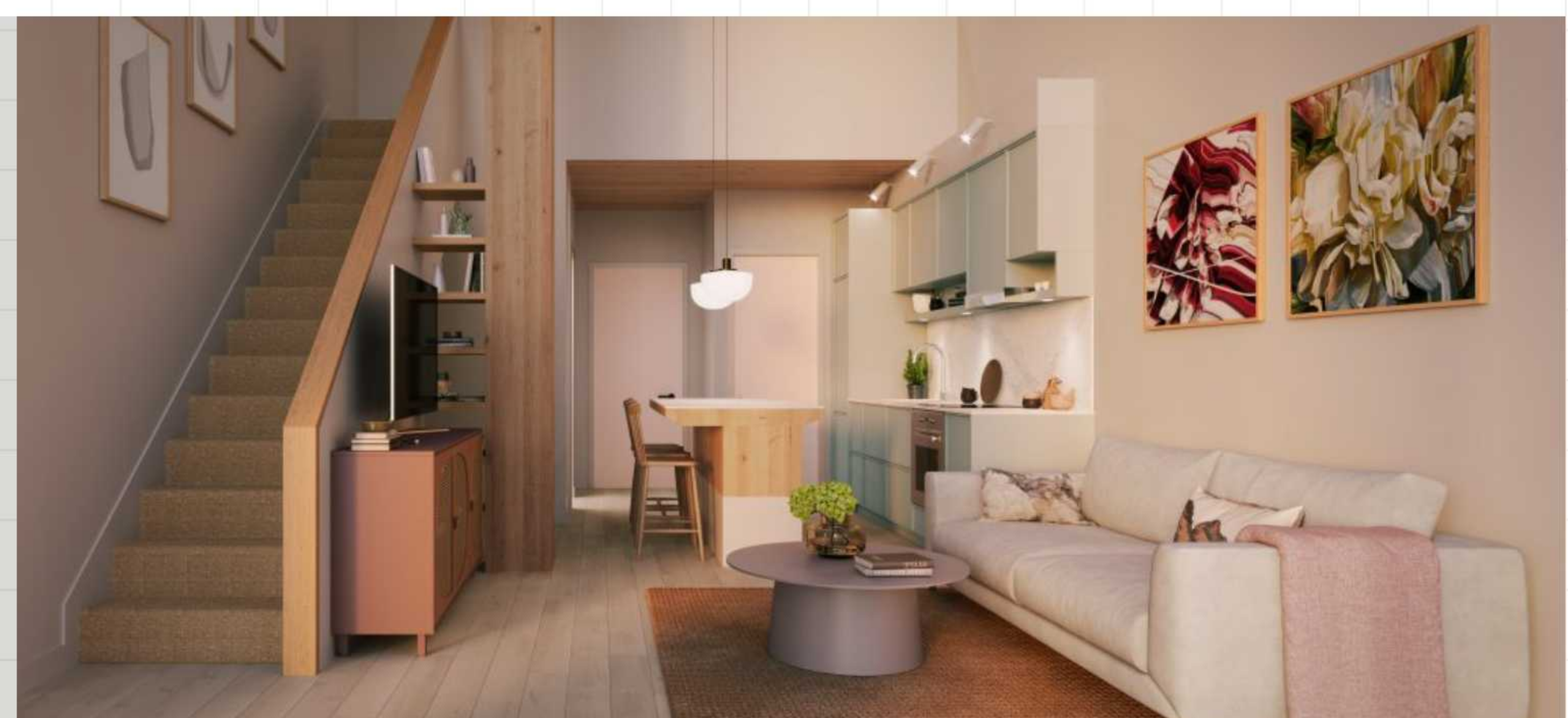
Register Now For Presale Condo Info



### NOW SELLING!

Tresah West, Victoria's First Mass Timber Condos

Contact us Today!



Welcome to a **sustainable future.**  
Welcome to **your neighbourhood.**  
Welcome to a **worthy investment.**  
Welcome to **Tresah.**  
Welcome **home.**

Curious? Let us tell you more.

Contact our Team Today

Follow Tresah on Social media

📷 Instagram    📘 Facebook

