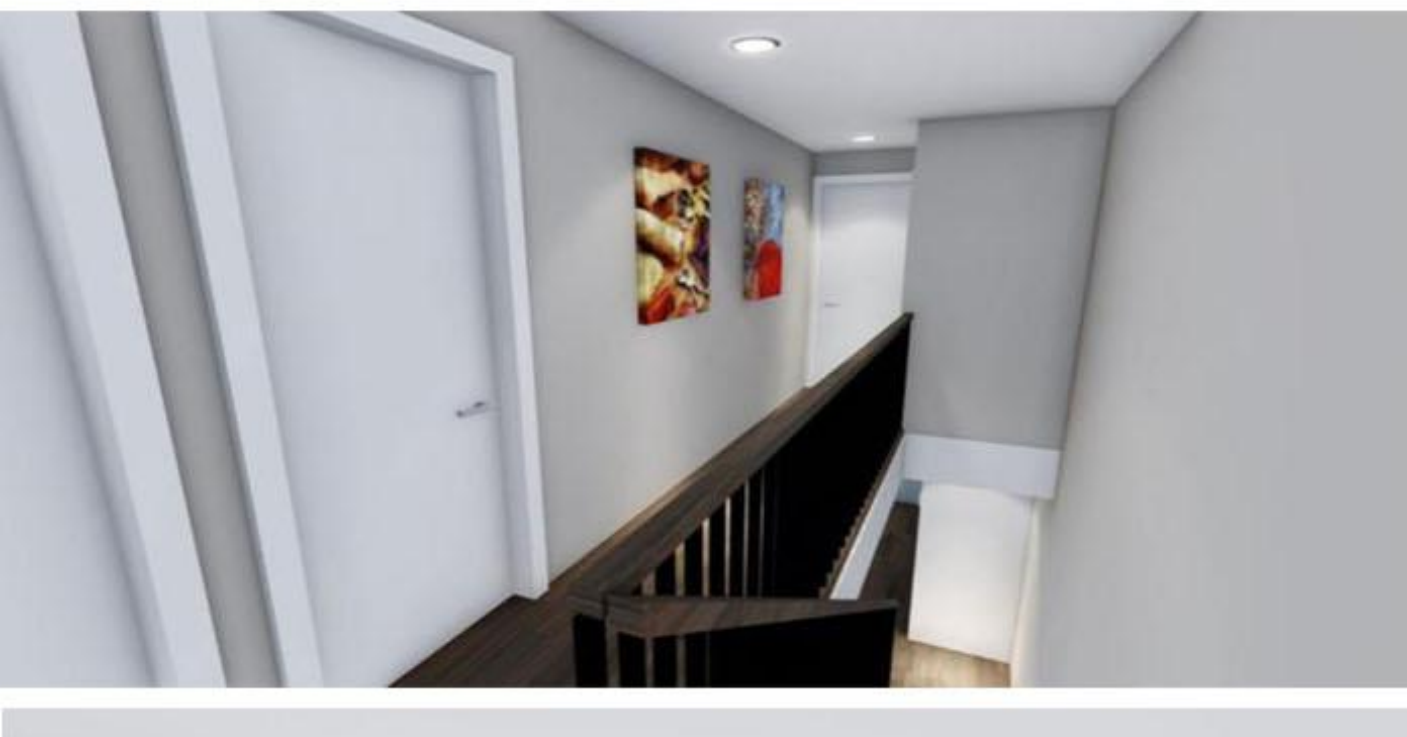
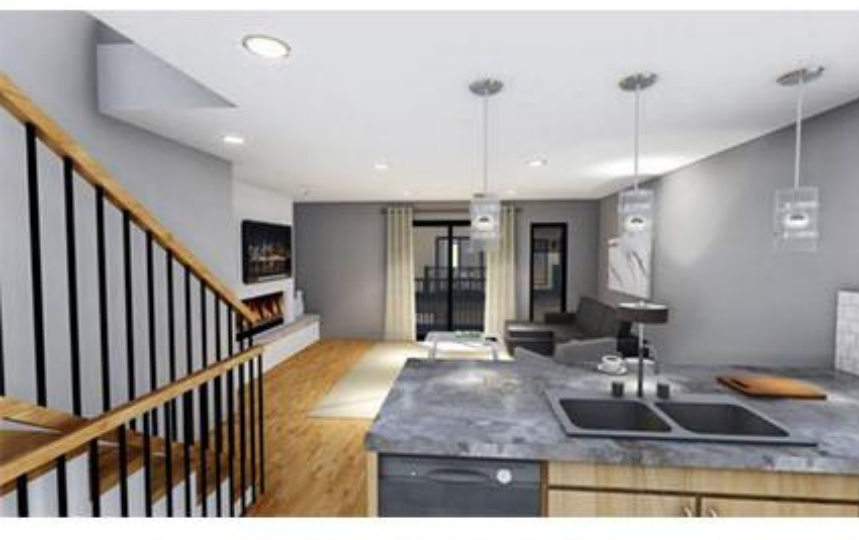




📍 500 Fleming Road, Kelowna, BC

By Saba Construction Ltd.

500 Fleming Rd is a house in Kelowna, BC V1X 3Z3. Nearby schools include School District No 23 (Central Okanagan), Heritage Christian School and Pearson Elementary. The closest grocery stores are Oriental Supermarket, MarketPlace IGA and Old Town Farm Market. Nearby coffee shops include Starbucks, Starbucks and Starbucks. Nearby restaurants include A&W Restaurant, Barbs Delight and Yamato Japanese Cuisine. 500 Fleming Rd is near Ben Lee Park, Davie Park and Hollydell Park. This address can also be written as 500 Fleming Road, Kelowna, BC V1X 3Z3.

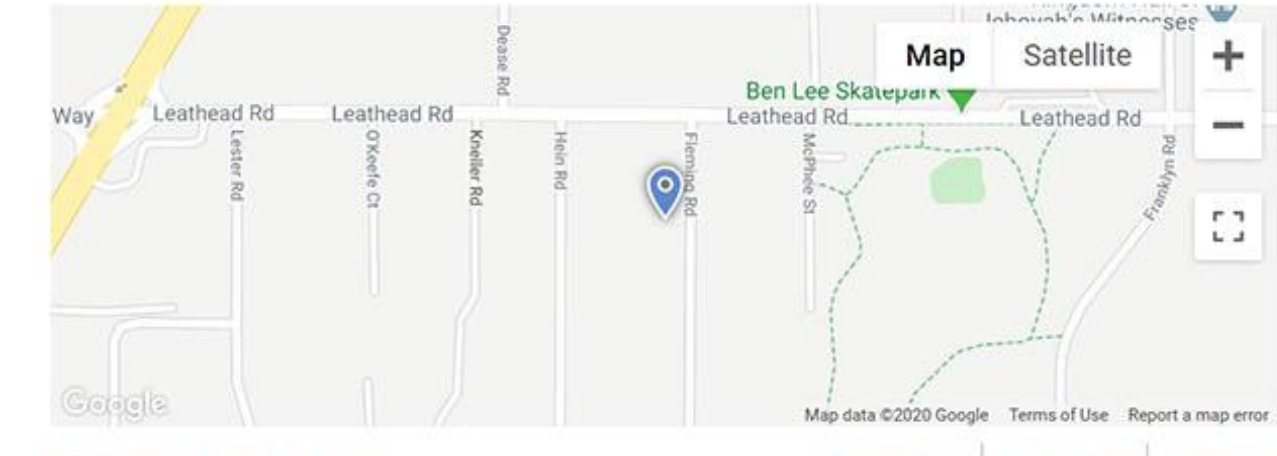


Located in an up-and-coming neighborhood of Kelowna, Urban Park TownHomes is an exclusive collection of 36 unique-multi-story homes. Built with open space and open living in mind, each home captures the essence of family. Relaxing and private green spaces to experience the mountain views around you, and all the amenities Rutland has to offer, are just steps outside your door. Find out what modern living means.

## Features & Finishes

Unique cutting-edge design  
Built around private green escapes  
Built with open space and open living in mind, each home captures the essence of family. Relaxing and private green spaces to experience the mountain views around you, and all the amenities Rutland has to offer, are just steps outside your door. Find out what modern living means.

Each one has backyard (townhouses include private, dedicated yard space with fence)  
Balcony off the dining room  
Tandem garage for 2 cars  
Within the garage, a roughed-in area for future bathroom  
Contemporary styling  
Zero maintenance exterior  
Energy efficient windows and doors  
A rare collection of West Coast, modern homes with generous outdoor living spaces and Modern Interiors  
Homes are backed by Pacific Home Warranty with a 2-5-10 year  
Built ready for plug-in electrical vehicles with a 240V plug in townhouse garages  
Open-concept kitchens connect to living space  
Modern, European-style cabinetry is sleek and durable  
Soft-close door and drawer mechanisms  
Stainless steel appliance package  
Natural stone mosaic back-splash duplex  
Engineered quartz stone on all counter tops



Map Nearby Homes For Sale Expand Map Street View Directions

