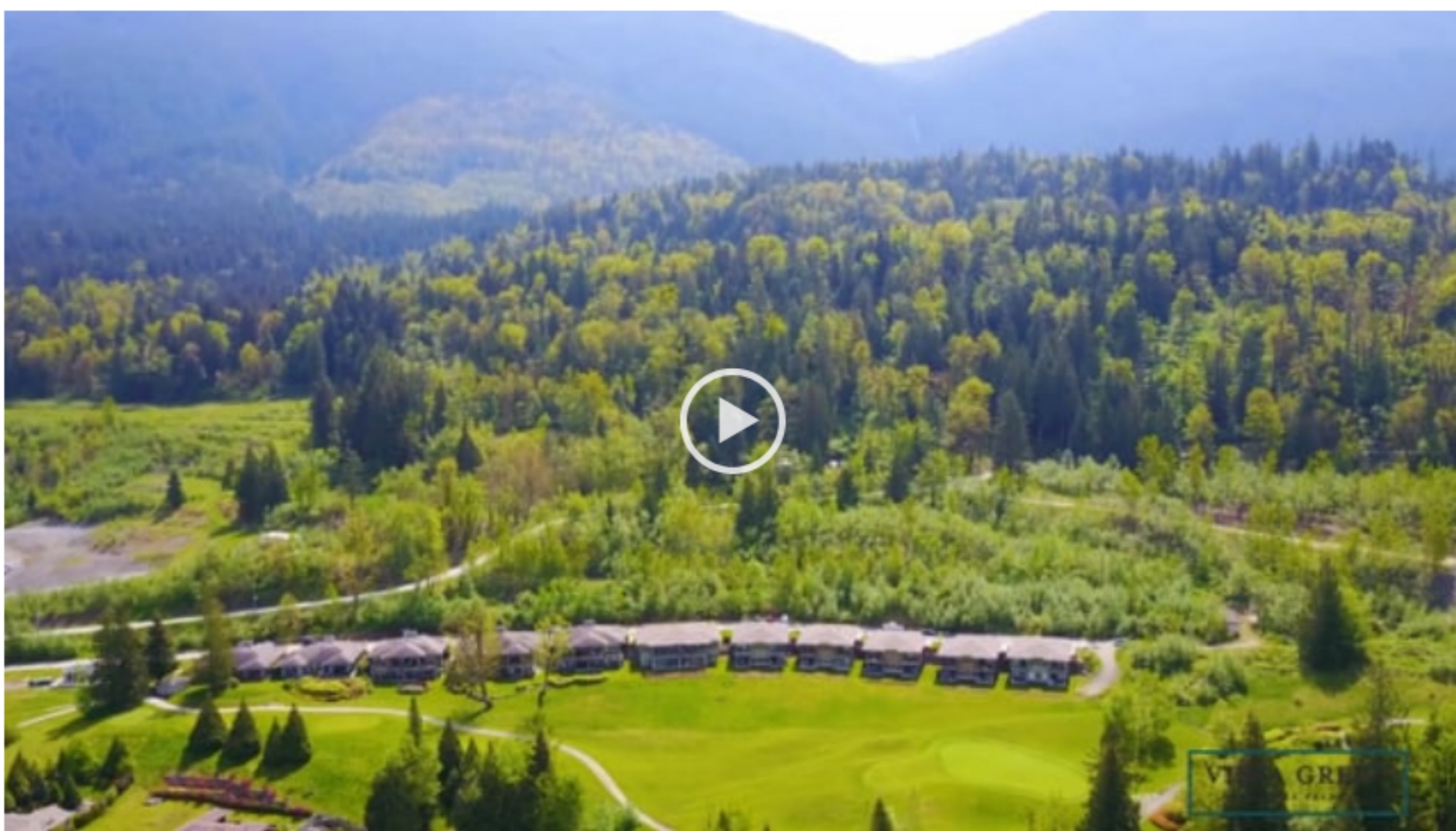


PHASE 5 NOW SELLING



A LIMITED COLLECTION OF
66 TOWNHOMES LOCATED
HIGH ABOVE IT ALL.

PERFECT FROM EVERY
VIEWPOINT



IT FEELS GOOD JUST TO BE HERE

Vista Green at The Falls is a rare find. Nestled on the hillside in Chilliwack, the exclusive community of rancher-style townhomes stands apart in every way. The elevated setting is private and peaceful. You'll enjoy stunning views of the golf course, Fraser Valley and mountains, as well as the convenience of having shops and services a short drive away. Surrounding you is the beauty of nature and an abundance of recreational opportunities. It's like being on vacation every day. And for those who like to travel, you can lock up and leave with complete peace of mind.

Our Presentation Center is located at
51096 Falls Court, Chilliwack, BC V4Z 1K7
Open Tues to Friday 11 am to 3 pm
Saturday 10 am to 5 pm

CONTACT INFO

REGISTER TODAY





MODERN WEST COAST ARCHITECTURE BLENDS WITH NATURAL SETTING



ELEGANT FIRST IMPRESSION

From the moment you enter the gated community, the serene streetscape creates a sense of well-being. Townhomes are thoughtfully designed and meticulously constructed. Stone accents adorn the exterior and full driveways lead to double garages. Floor plans feature spacious open main floor living, large decks and walkout basements. Oversize windows optimize views and daylight, and every feature and finish, inside and out, is masterfully integrated to elevate comfort and style.



SOPHISTICATION IN THE SIMPLICITY

Vista Green townhomes are beautiful to behold. The open living space and large patios with stunning views set the stage for entertaining. High ceilings, hardwood flooring and solid quartz countertops create an elegant ambiance. Natural rock surrounds the gas fireplace. Kitchens feature an oversize island, modern shaker style cabinetry and high-end stainless steel appliances, including a gas range. Plus there's lots of storage. Set your sights high; come home to Vista Green.

FEATURES LIST

[DOWNLOAD \(PDF\)](#)

FIRST IMPRESSIONS

- Gated community of 66 rancher-style townhomes nestled on a hillside in Chilliwack
- Modern West Coast architecture creates an inviting welcome
- Panoramic views encompass The Falls golf course, Fraser Valley and mountains
- Entertainment-size balconies feature glass rails to optimize views
- Energy efficient design enhances value
- Double garages with full driveways

ELEGANT INTERIORS

- Professional designed interior colour schemes
- 2 bedroom plus den floor plans with spacious main floor living, large decks and walkout basements
- Soaring ceilings, hardwood, tile & carpet flooring.
- European craftsmanship – sophisticated and thoughtfully designed
- Modern linear gas fireplaces
- Oversize windows optimize natural daylight and views
- Energy efficient LED lighting
- Rough-in for central vacuum system

INVITING KITCHENS

- Modern, low maintenance and high-quality cabinetry
- Solid quartz countertops & backsplash
- High end stainless steel appliance package includes a gas range
- Large center island for entertaining & added storage
- Thoughtfully placed task and ambient lighting
- Double bowl under mount stainless steel kitchen sink
- Designer fixtures and hardware

LUXURIOUS BATHROOMS

- Solid quartz countertops
- Tiled flooring
- Deep soaker tub designed for reclining comfort
- Large walk-in shower with elegant tile flooring
- Designer fixtures and hardware

PEACE OF MIND

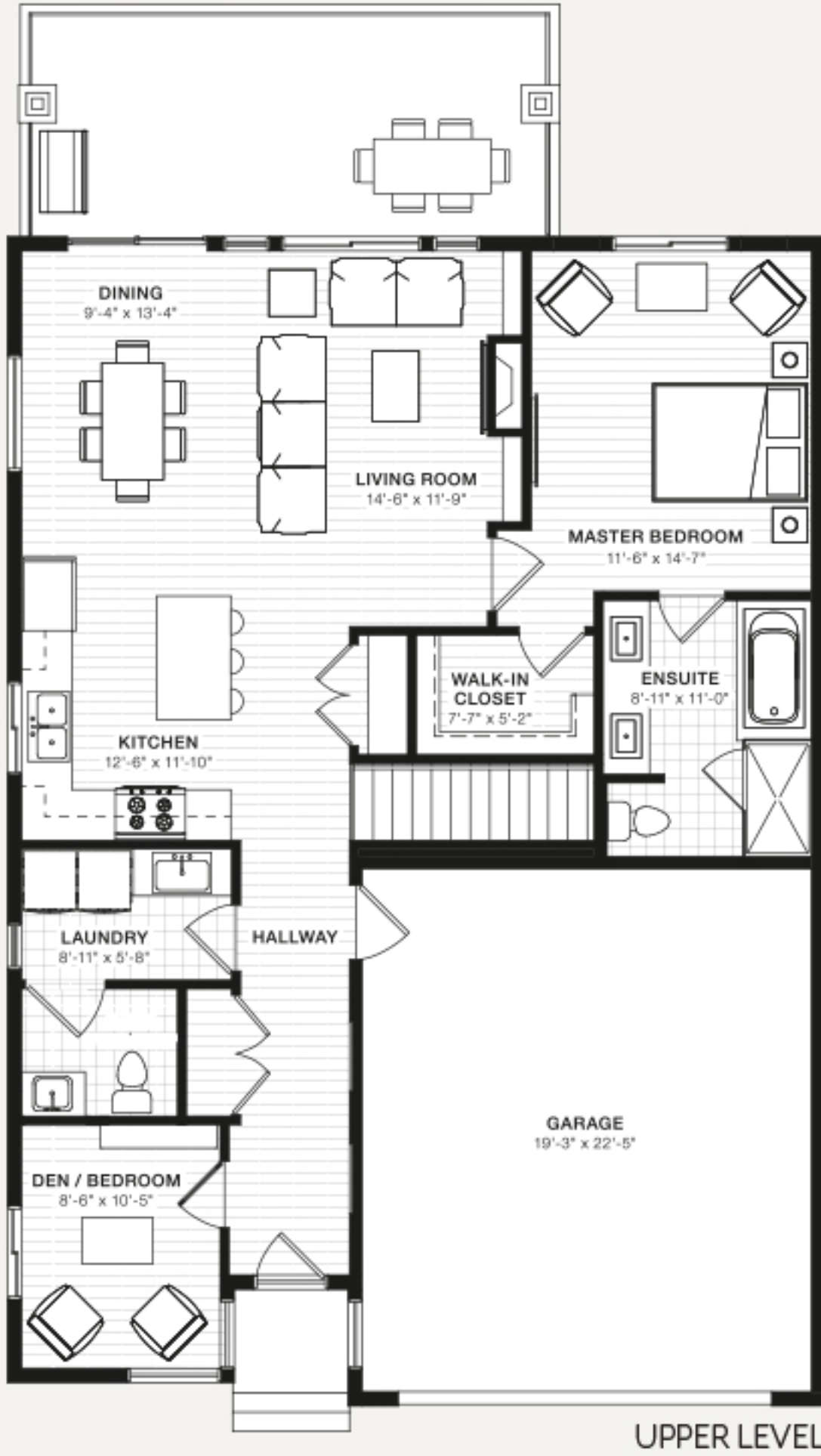
- Comprehensive one-year warranty provided by Kerkhoff Construction
- Industry-leading Travelers Canada 2-5-10 year new home warranty coverage
- Fire sprinklers and smoke detectors

OPTIONAL UPGRADES

- Installed air conditioning unit
- High end sound system installed and ready to go – just add music
- On demand hot water
- Programmable, smart & connected thermostat
- Built in wine fridge in kitchen
- Cabinets to 10' high
- Upgrade appliances to Kitchenaid
- Garburator
- In-floor heating

In our continuing effort to improve and maintain the high standard of Vista Green development, the developer reserves the right to modify or change plans, specifications, features and prices without notice. Materials may be substituted with equivalent or better at the developer's sole discretion. All dimensions and sizes are approximate and are based on architectural measurements. As reverse, mirrored and/or flipped plans occur throughout the development please see architectural plans if material to your decision to purchase. Renderings are an artist's conception and are intended as a general reference only. Please refer to disclosure statement for specific offering details. E.&O.E.

A1 2 BEDROOMS + DEN
2.5 BATHROOMS
2,424 SQ FT (excludes garage and decks)

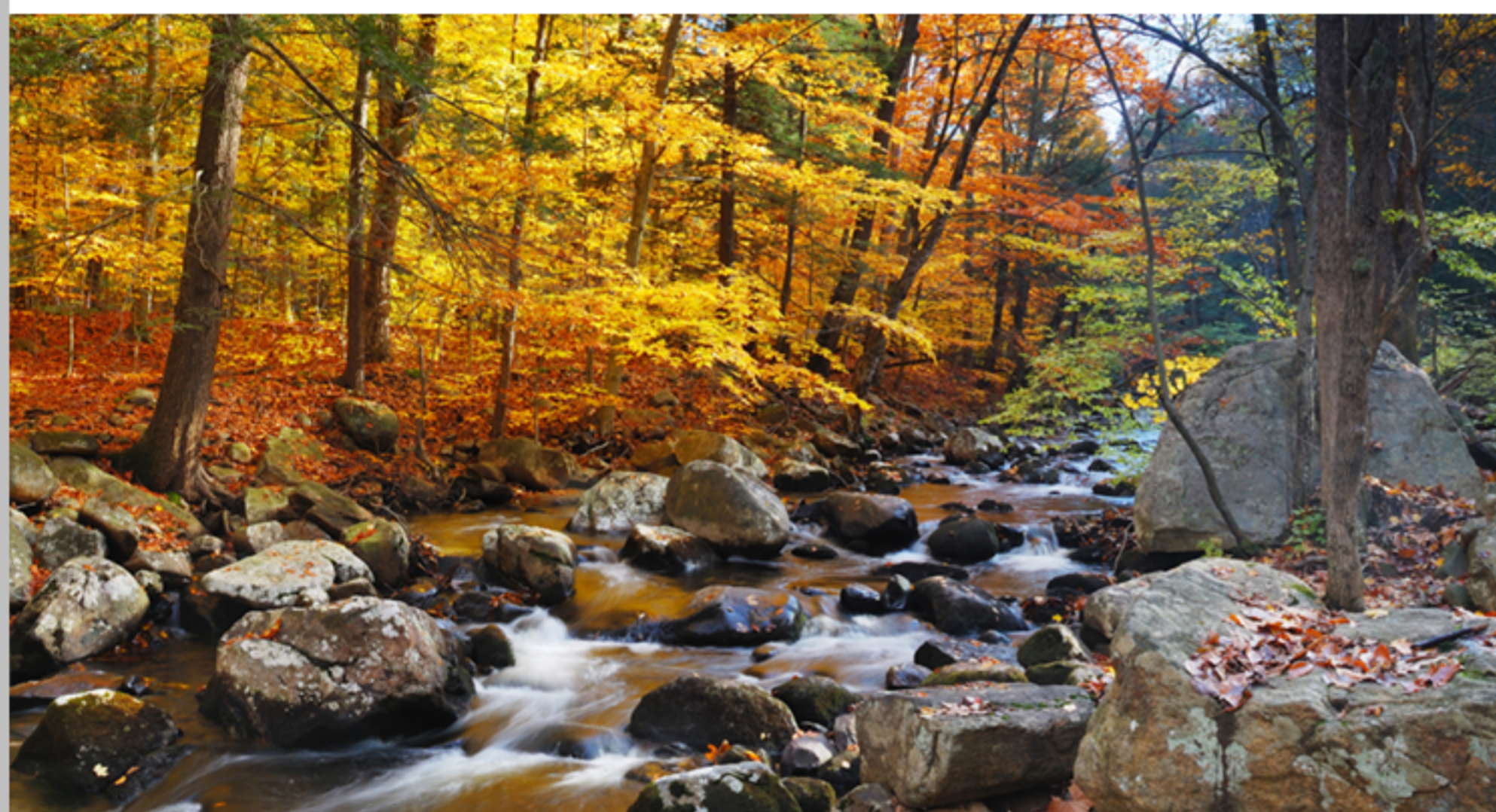




TAKE DAILY PLEASURE
IN ALL THAT
SURROUNDS YOU

CONNECTED TO NATURE & URBAN AMENITIES

Whether you like to go hiking, biking or boating, there's no better place to enjoy the great outdoors. Explore Bridal Falls and Manning Park, fish along the mighty Fraser River, or spend a sunny afternoon at Cultus Lake. Should golf be your passion, there are seven spectacular courses to choose from, one of which is at your doorstep.



IN THE NEIGHBOURHOOD

Chilliwack is also a vibrant urban center. The downtown core blends heritage buildings with modern shopping centres, supermarkets and big box stores. There are a wide variety of restaurants, multiple movie cinemas, a luxurious spa, plus all the essential services. The city even has it's own airport and general hospital.

- RESTAURANTS ●
- RECREATION ●
- ACTIVITIES ●
- SHOPPING ●
- SERVICES ●



45+ YEARS OF EXPERIENCE

INDUSTRY LEADER IN CONSTRUCTION MANAGEMENT

Kerkhoff Construction is proud to bring Vista Green at The Falls to market. Kerkhoff Construction provides industry leading development and construction management services for single-family and multi-family residential projects, as well as commercial and specialty projects. The company is well respected both locally and internationally for their expertise, commitment to quality, cost efficiencies and reliability. Long-standing relationships with respected architects, engineers, financial institutions, marketing firms, sub-trades and suppliers provide the extensive knowledge base required to take projects from preliminary concept to successful completion. To ensure lasting value and complete peace of mind, every Vista Green home is covered by a 2-5-10 year new home warranty.

VISIT KERKHOFF



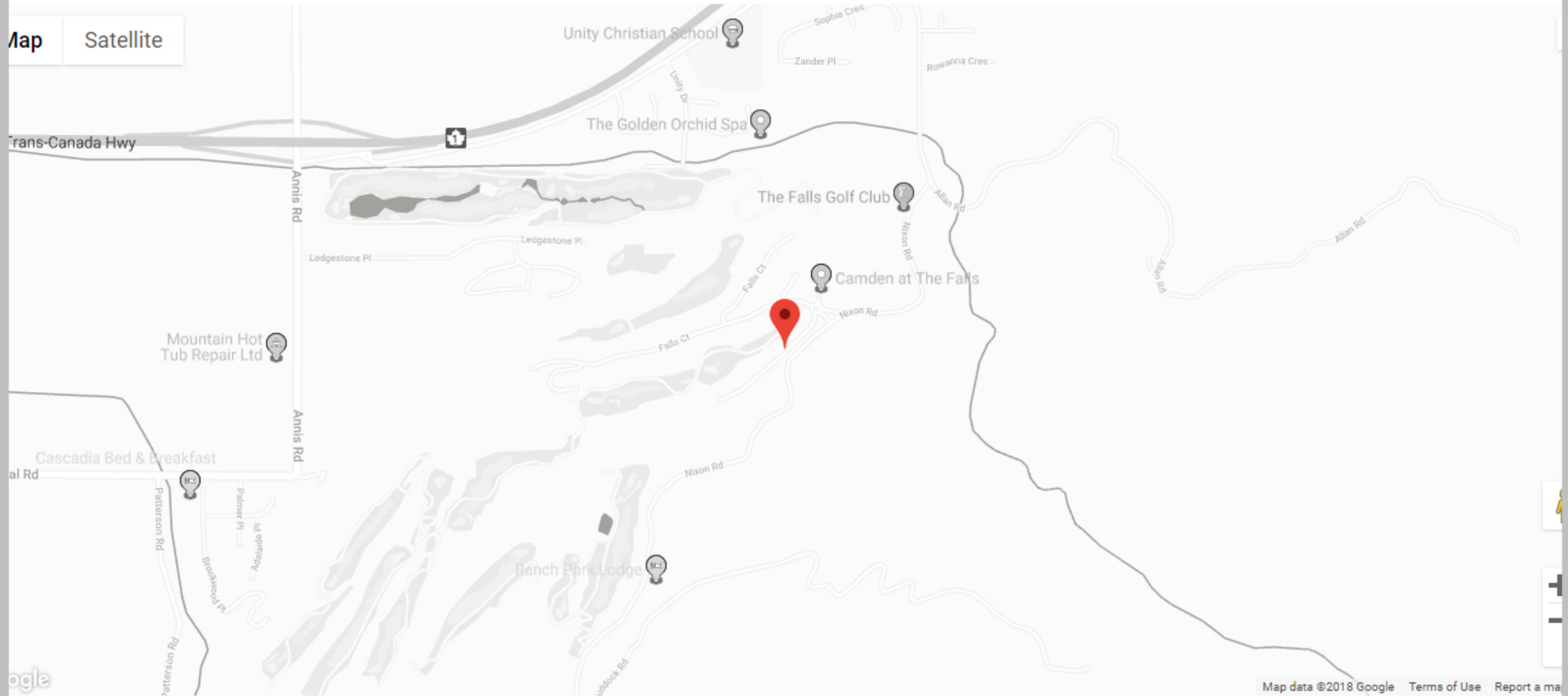
SQUALA COMMUNITY CENTRE
CHILLIWACK

VISTA GREEN
AT THE FALLS



VIEW OUR PRIVACY POLICY

In our continuing effort to improve and maintain the high standard of the Vista Green development, the developer reserves the right to modify or change plans, specifications, features and prices without notice. Materials may be substituted with equivalent or better at the developer's sole discretion. Please refer to disclosure statement for specific offering details. Prices and incentives are subject to change or may be withdrawn without notice and do not include applicable taxes. E.&O.E. Sales and Marketing provided by Fifth Avenue Real Estate Marketing Ltd. fifthave.ca



CONTACT

Our Presentation Center is located at
 51096 Falls Court, Chilliwack, BC V4Z 1K7
 Open Tues to Friday 11 am to 3 pm
 Saturday 10 am to 5 pm

phone 604.745.4122

email info@vistagreenliving.ca

