



Urban Living at Nature's Edge

KELOWNA, BC

52 NORTH GLENMORE TOWNHOMES
NOW SELLING!

FIRST IMPRESSIONS COUNT

Like a plush carpet rolled out to welcome you home, front doors saturated in rich red tones await your arrival. Complimented by a neutral palette that will stand the test of time, these distinctive homes feature understated elements reminiscent of rustic countryside for a fresh take on contemporary.



EFFORTLESS LIVING

The perfect union of urban convenience and rural serenity. Take a short walk from home to grab a Starbucks coffee, stock up on groceries, savour local eateries, or check off your daily to-do list. The living is easy with quick access to shops, services, schools, recreation, and transport routes.

LOCATION



NATURE IS YOUR PLAYGROUND

Embrace views of mountains, rolling hills, and orchards. Enjoy leisurely strolls and bike rides down tree-lined trails and let the kids and pets explore nearby parks and playgrounds. Pristinely landscaped yards and community green space set the tone for tranquility without the need for personal maintenance.

PLANS



LOCATION

301 Drysdale Boulevard
Open Monday To Saturday
12pm - 4pm

CONTACT



GLENPARK ROW PROPERTY SPECIALISTS

778 821 3888
glenparkrow@fortunemarketing.ca



This is not to be considered an exhaustive list of specifications or design and is subject to change at any time. The developer reserves the right to make modifications and changes to building design, specification, features, and floor plans. This is not an offering for sale. An offering for sale may only be made with a Disclosure Statement. E.S.O.E.





EFFORTLESS LIVING

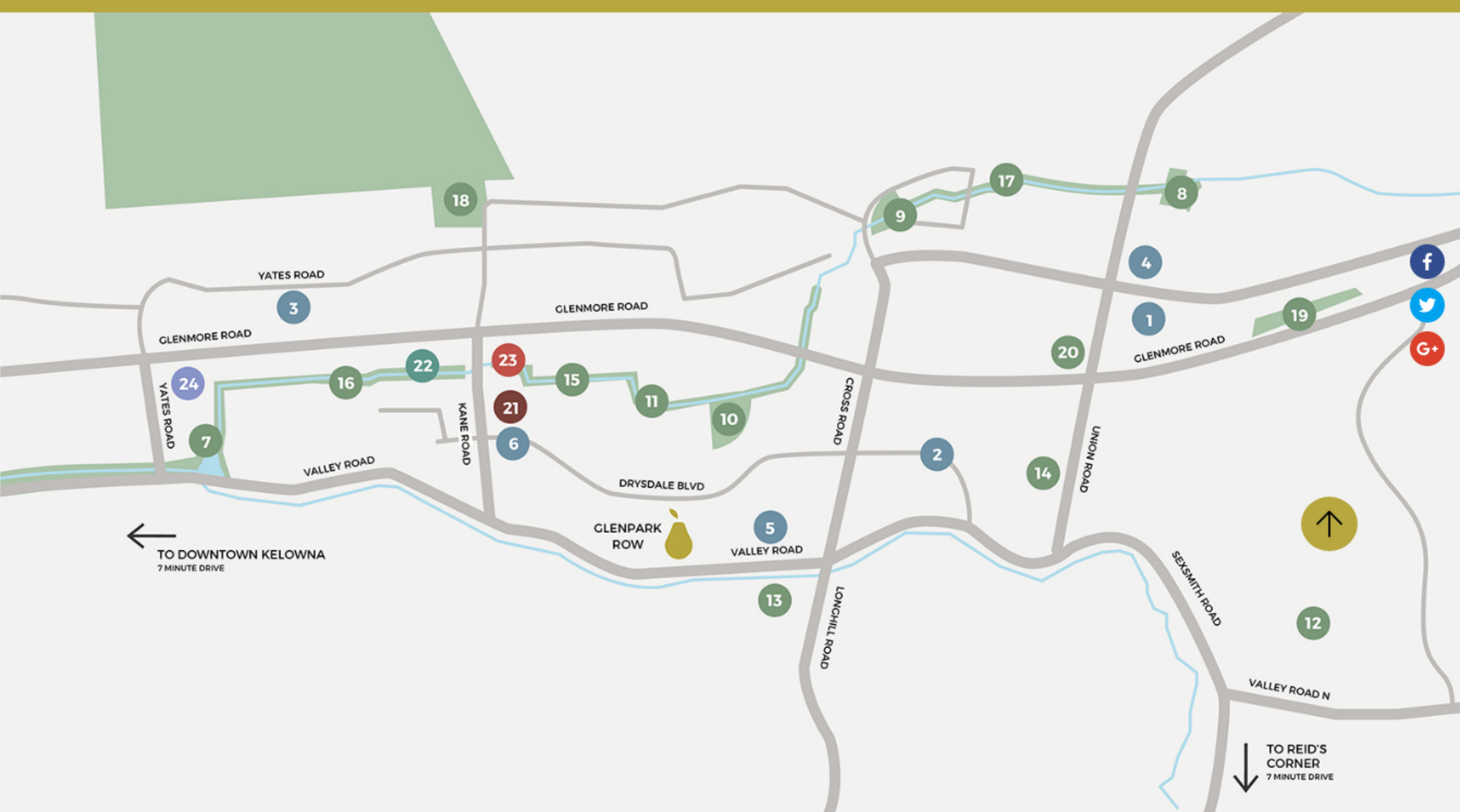


The perfect union of urban convenience and rural serenity. Take a short walk from home to grab a Starbucks coffee, stock up on groceries, savour local eateries, or check off your daily to-do list. The living is easy with quick access to shops, services, schools, recreation, and transport routes.

LOCATION

301 Drysdale Boulevard
Open Mon – Sat 12pm – 4pm

Or Visit the Fortune Marketing Real Estate Gallery:
305 Lawrence Ave, Open Mon–Fri, 9–5PM



SCHOOLS/CHILDCARE

- 1 NORTH GLENMORE ELEMENTARY
- 2 DR. KNOX MIDDLE SCHOOL
- 3 WATSON ROAD ELEMENTARY/PRESCHOOL
- 4 ADVENTURE JUNCTION EARLY LEARNING CENTRE
- 5 GREEN GABLES DAYCARE
- 6 LITTLE OWL ACADEMY

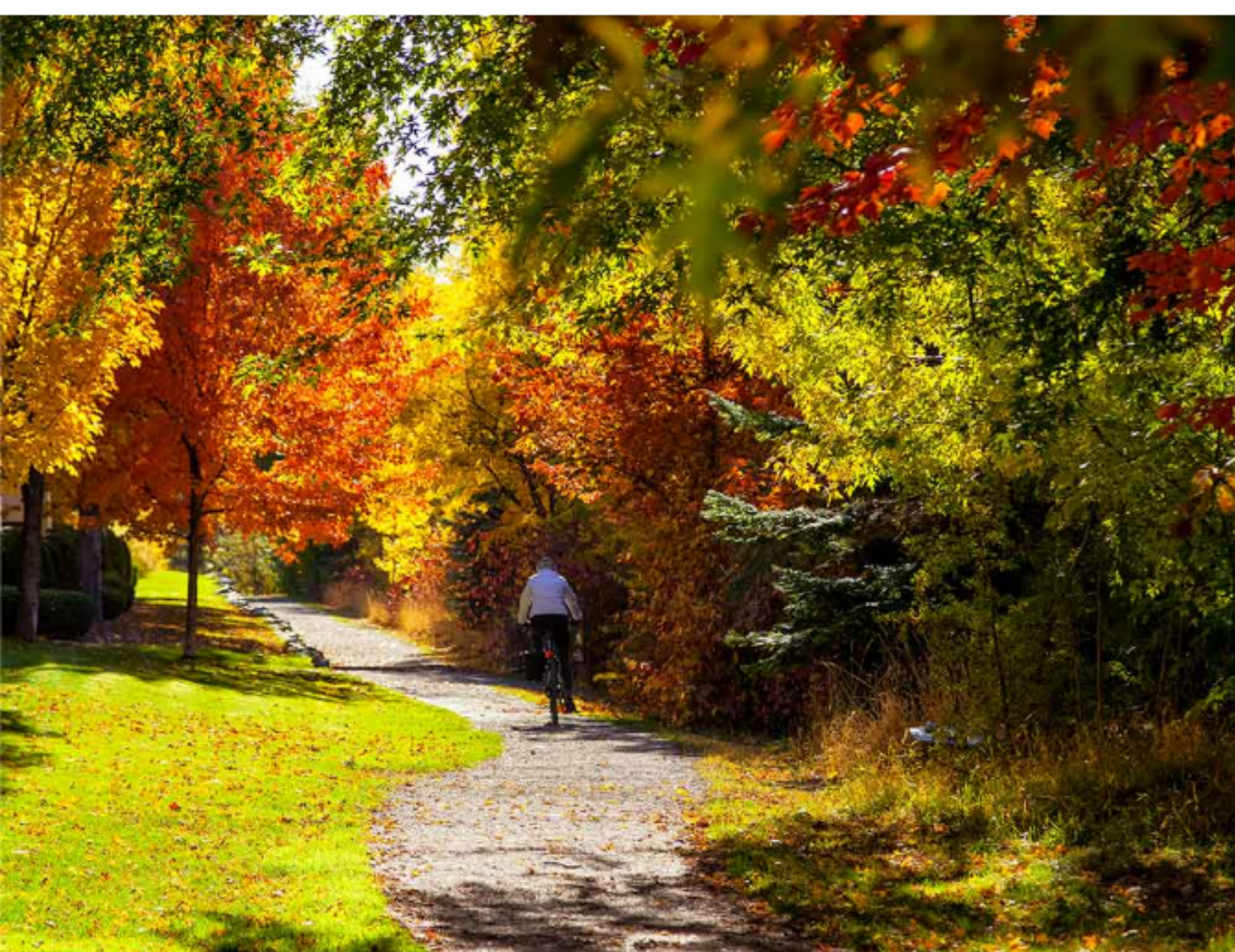
- 14 NAITO PARK
- 15 WHITMAN GLEN PARK (DOGS)
- 16 SUTTON GLEN PARK (DOGS)
- 17 NEWPORT GLEN PARK (DOGS)
- 18 BALLOU PARK
- 19 GLENMORE ROAD NORTH GREENSPACE
- 20 WYNDHAM PARK

PARKS

- 7 VALLEY GLEN WETLAND (DOGS)
- 8 MILLARD GLEN PARK
- 9 CROSS GLEN PARK
- 10 MATERA GLEN PARK
- 11 BRANDT'S CREEK LINEAR PARK (DOGS)
- 12 GLENMORE SPORTS PARK
- 13 GLENMORE RECREATION PARK (UNDER CONSTRUCTION)

- 21 BRANDT'S CREEK CROSSING
- 22 GLENVALLEY PLAZA
- 23 GLENPARK VILLAGE
- 24 SANDALWOOD PLAZA

DOWNLOAD



GLENPARK ROW PROPERTY SPECIALISTS

778 821 3888

glenparkrow@fortunemarketing.ca



This is not to be considered an exhaustive list of specifications or design and is subject to change at any time. The developer reserves the right to make modifications and changes to building design, specification, features, and floor plans. This is not an offering for sale. An offering for sale may only be made with a Disclosure Statement. E & O E





FLOORPLANS | SITE PLAN | FEATURES



FLOORPLANS

GLENPARK ROW
Plan A2

3 BEDROOM, 2.5 BATH
1,491 FT² INDOOR LIVING
91 FT² BALCONY
446 FT² GARAGE



The developer reserves the right to make modifications to the information contained herein. This is not an offering for sale. Any such offering can only be made with a disclosure statement (DSK).



SITE PLAN



[DOWNLOAD](#)

FEATURES

PROJECT OVERVIEW

- 52 community-inspired townhomes in desirable North Glenmore
- Urban tastemaker and rural rustic come together for a fresh take on contemporary design by RLA Architects Inc
- Front doors saturated in rich red Benjamin Moore "Caliente" await your arrival and feature a modern vertical window
- Superior HardiePanel and HardiePlank siding in stylish vertical and horizontal combinations are attractive yet durable
- Unique pitch roofing featuring Timberline shingles that offer safety and strength
- Expansive windows throughout the home invite natural light to brighten each day and enhance exterior character with stylish black outlines
- Embrace outdoor living with a private patio off the kitchen and a gated front yard space
- A double garage for each home offers vehicle security and increased storage options
- Each home boasts a flex room with pony wall off the garage to increase your living space options. Bedroom or office conversion options available as an upgrade
- Comprehensive 2-5-10 year New Home Warranty coverage

KITCHEN

INTERIORS

BATHROOM

COMMUNITY & LIFESTYLE

[DOWNLOAD](#)

GLENPARK ROW PROPERTY SPECIALISTS

778 821 3888
glenparkrow@fortunemarketing.ca



This is not to be considered an exhaustive list of specifications or design and is subject to change at any time. The developer reserves the right to make modifications and changes to building design, specification, features, and floor plans. This is not an offering for sale. An offering for sale may only be made with a Disclosure Statement, E.O.E.



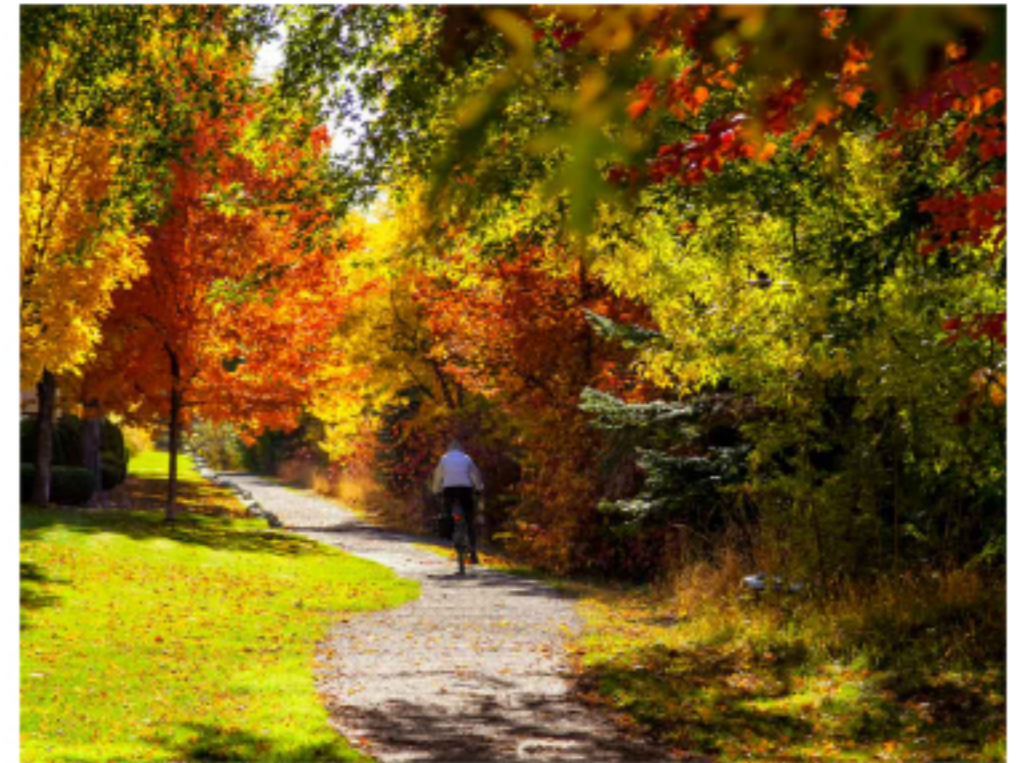
GLENPARK ROW



RENDERINGS



KELOWNA



LOCATION

301 Drysdale Boulevard
Open Monday To Saturday
12pm - 4pm



CONTACT

GLENPARK ROW PROPERTY SPECIALISTS

778 821 3888
glenparkrow@fortunemarketing.ca



This is not to be considered an exhaustive list of specifications or design and is subject to change at any time. The developer reserves the right to make modifications and changes to building design, specification, features, and floor plans. This is not an offering for sale. An offering for sale may only be made with a Disclosure Statement. E & O E.

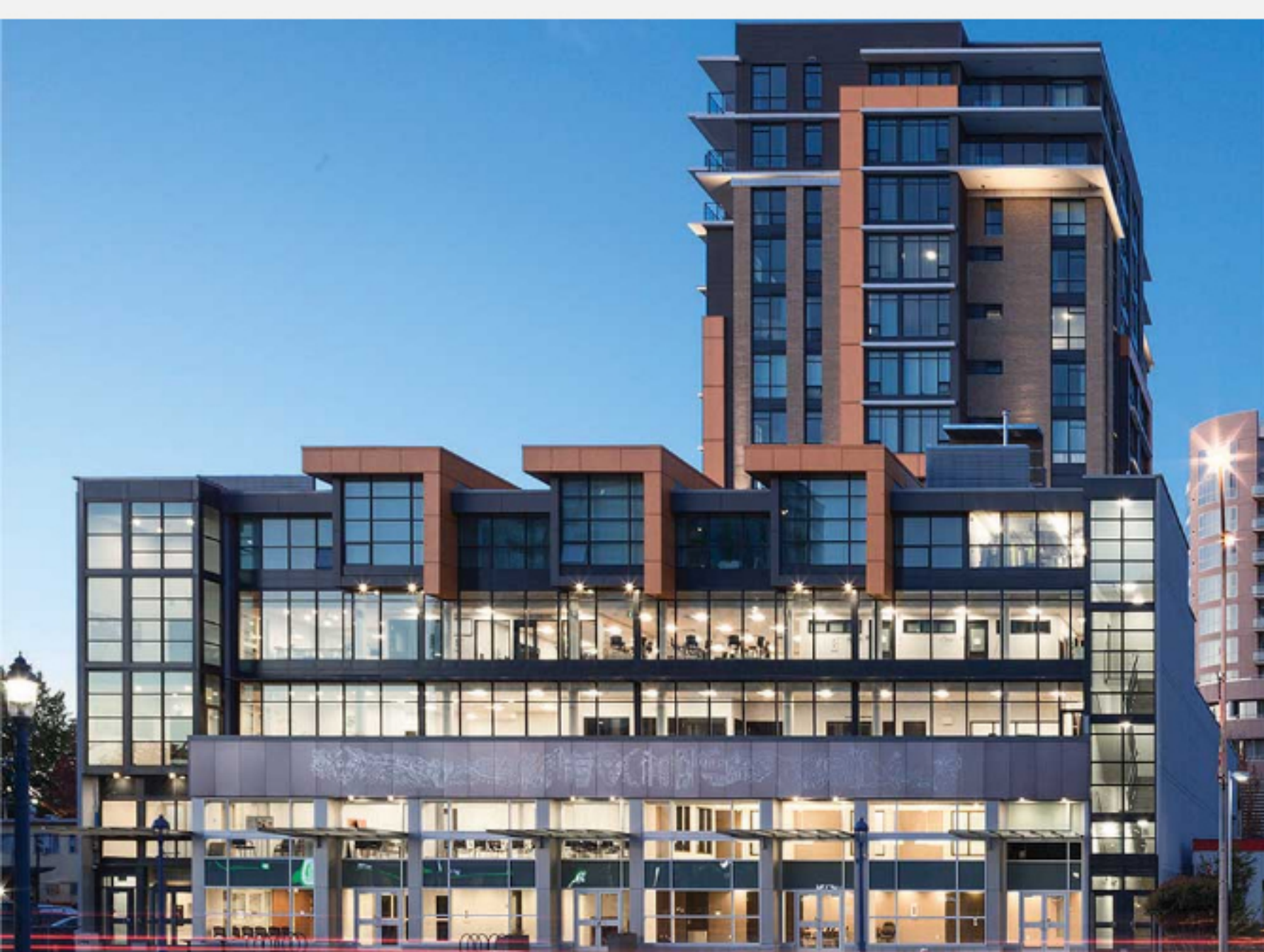
GLENPARK ROW



VANMAR DEVELOPMENTS



In 2017, VanMar Developments announced Drysdale Row- an attractive collection of 69 North Glenmore townhomes that sold out in mere weeks! The success story continues with the introduction of Glenpark Row- inspired by the most desirable elements at Drysdale, with unique touches to make it distinctly Glenpark. With over 60 completed projects and a personal approach to the communities they serve, VanMar has earned a first-class reputation as a trusted developer and builder.



RAYMOND LETKEMAN ARCHITECTS



Raymond Letkeman Architects Inc. is a full service architectural firm with over 35 years of practice. RLA has master planned and designed comprehensive resort and urban communities throughout Canada and the United States. RLA provides a current and comprehensive knowledge of market expectations, appropriate design response and technical understanding unique to these varied communities and resort villages.

FORTUNE MARKETING

Fortune Marketing specializes in consulting, branding, marketing, and sales for new construction real estate developments throughout the Okanagan. The agency's wide-ranging portfolio of services, from brand conception through to close of sales, allows developers to focus their energy and attention on the construction process. A dynamic group of dedicated professionals, Fortune Marketing is committed to providing top tier service to both builders and home-seekers.

LAURA VROOM DESIGN

Principal designer Laura Vroom maintains an interdisciplinary design practice that considers the relationship between interior and exterior design and aims to fit effortlessly within its landscape. While her work varies in different contexts, reoccurring design elements include the use of local materials, durable finishes, and minimalist-inspired design that is practical enough for everyday living.



LOCATION

301 Drysdale Boulevard
Open Monday To Saturday
12pm - 4pm

CONTACT

GLENPARK ROW PROPERTY SPECIALISTS

778 821 3888

glenparkrow@fortunemarketing.ca



This is not to be considered an exhaustive list of specifications or design and is subject to change at any time. The developer reserves the right to make modifications and changes to building design, specification, features, and floor plans. This is not an offering for sale. An offering for sale may only be made with a Disclosure Statement, E & O E.