

Unique indoor-outdoor living space

Retractable doors allow designers to get creative with elements and furniture

Mary Frances Hill



An artist's rendering depicts an expansive indoor-outdoor space created by retractable doors at Hillside East in the Concord Brentwood community in Burnaby.



The indoor-outdoor social lounge space at Hillside East, as depicted in an artist's rendering.

owners will really love and embrace."

The transition is seamless: The threshold floor level between the open-concept space and the balcony has been removed, allowing occupants to transition smoothly to enjoy fresh air.

This feature is not new to luxury homes, and furniture designers have responded to the demand for attractive furnishings and materials that can adapt to indoor and outdoor living.

"Gone are the days when outdoor furniture was big, bulky and relegated to the outdoors only," says Lam. "Today's more modern and more refined outdoor furniture can often be seen inside homes, offices and other interior public spaces."

Lam says she'd advise Hillside East homeowners to bring decor often used indoors to the outside area, and vice versa.

"When bringing the outside in, having greenery inside the home allows for a visual connection to the outdoors. Take some interior home elements outside ... light fixtures, tableware and decorative accessories like trays and candles."

Area rugs, furniture and decorative cushions in similar colours, pattern, style or form can harmonize the colour scheme, she adds.

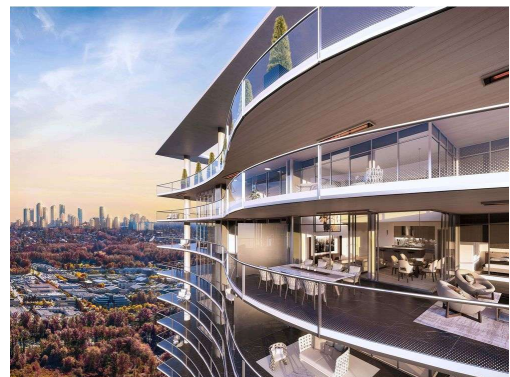
"We also suggest homeowners keep the areas by the sliding doors as clear and uncluttered as possible. Eradicating visual barriers helps to open up the views and creates a better connection between indoor and outdoor spaces."

Meantime, Lam and her team used large-format porcelain tiles in

the kitchen and bathrooms of Hillside East. She prefers the material to the pricier marble, as porcelain is lightweight and resistant to scratches and extreme temperatures.

The Liv Interiors team also made custom closets fashioned in a millwork wood finish.

"Instead of selecting a specific brand and having them design the closets for us, we design each closet in-house with full functionality mind."



Concord Brentwood – Hillside East

What: A total of 900 units in two concrete buildings of 55 and 45 storeys each, set in Concord's 26-acre parkside community in the emerging Brentwood town centre neighbourhood.

Where: 4880 & 4890 Lougheed Highway, Burnaby

Residence sizes and prices: Homes range from a 545- square-foot one-bedroom with balconies measuring between 158 and 276 square feet, from high \$500,000s; two-bedroom from \$750,000s; two-bedroom-and-den from \$840,000s; two-bedroom-and-den and three-bedroom homes from the Sky Collection (floor 44 and up) start at \$1.19 million

Developer and builder: Concord Pacific Developments Inc.

Sales centre address: 4750 Kingsway, Burnaby

Sales centre hours: 11:30 a.m. — 5:30 p.m., daily



Concord Brentwood's Hillside East units, shown in an artist's rendering, feature retractable doors that create a seamless transition between indoor and outdoor spaces.

When Olivia Lam and her team of designers at Liv Interiors were given a chance to design the interiors of homes with retractable doors — seamlessly opening the living space to the outdoors — it was an opportunity they couldn't pass up.

The "convertible living balconies" at Hillside East, a two-tower addition to Burnaby's huge Concord Brentwood project, are creating a buzz among visitors, Lam says, adding she wasn't surprised at the positive response.

"We really love the fact that the project's emphasis on indoor-outdoor living is getting noticed," says the principal of Liv Interiors.

The capacity of the sliding retractable doors to open the home up to the balcony space "is a very attractive design feature, and one that we believe home-