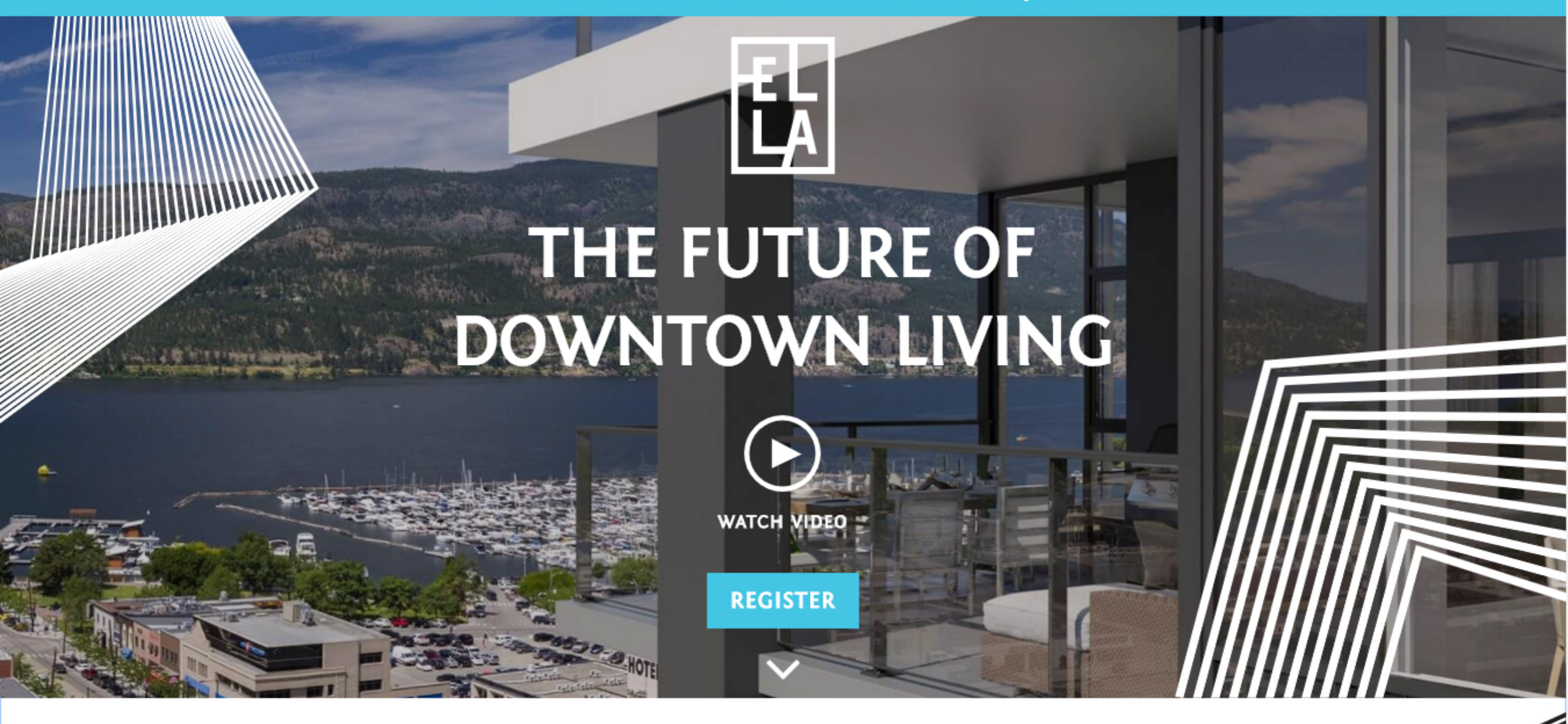


PRESENTATION CENTRE OPEN BY APPOINTMENT ONLY UNTIL JAN 19TH



THE FUTURE OF DOWNTOWN LIVING



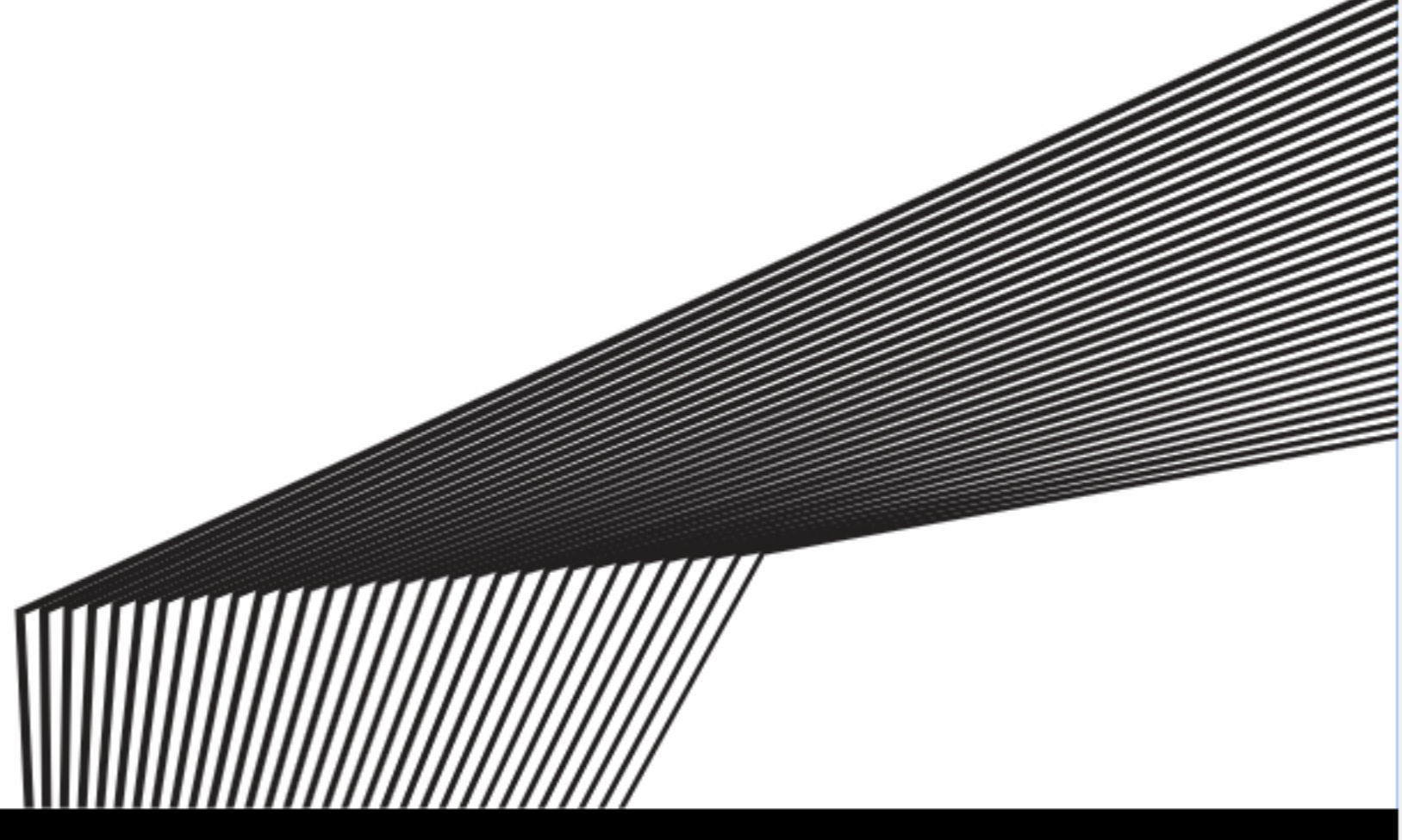
WATCH VIDEO

[REGISTER](#)


A New Kind of Concrete Condominium Now Selling

Contemporary concrete condominiums by Mission Group redefine downtown Kelowna living, changing the way we interact with both our neighbourhood and our city.

It's a new Kelowna. Welcome to ELLA.



10 Best Things About Ella

01. HIGH-QUALITY, CONCRETE CONSTRUCTION
02. LEED® CERTIFIED
03. WIRED FOR THE FUTURE
04. ENDLESS CITY, LAKE AND MOUNTAIN VIEWS
05. A LIFE BY THE LAKE
06. URBAN LIVING AT ITS BEST
07. WALKSCORE® OF 97
08. CONTEMPORARY INTERIORS
09. TIMELESS, LEADING-EDGE ARCHITECTURE
10. THE SPLENDOUR OF KELOWNA LIVING



06.

URBAN LIVING AT ITS BEST
with trend-setting local cuisine, creative social houses, boutiques, art galleries and more.

alch >
<



Where Urban Sophistication Meets Natural Beauty

The streets of downtown Kelowna's engaging Bernard District are lined with brick heritage buildings, offering up an urban bounty of independent coffee shops, contemporary restaurants and boutique shopping, with the lakeshore a languid moment away.

[LEARN MORE](#)


THE ELLA TEAM

Mission Group

Mission Group is dedicated to providing an outstanding home ownership experience. We know that well-planned, well-built homes in beautiful settings give our homeowners a sense of pride and fulfillment, and a place to create lasting memories of their own.

[LEARN MORE](#)

IBI Group

IBI Group is a globally integrated architecture, planning, engineering, and technology firm. From highrises to industrial buildings, schools to state-of-the-art hospitals, transit stations to highways, IBI designs every aspect of a truly integrated city for people to live, work, and play.

i3 Design

i3 Design is a multi-disciplinary design firm offering a full range of services to both single and multi-family home builders. i3 Design's areas of expertise cover the complete range of project needs, from the most preliminary design stages to final completion.



info@liveatella.com

778.215.6788

[REGISTER](#)

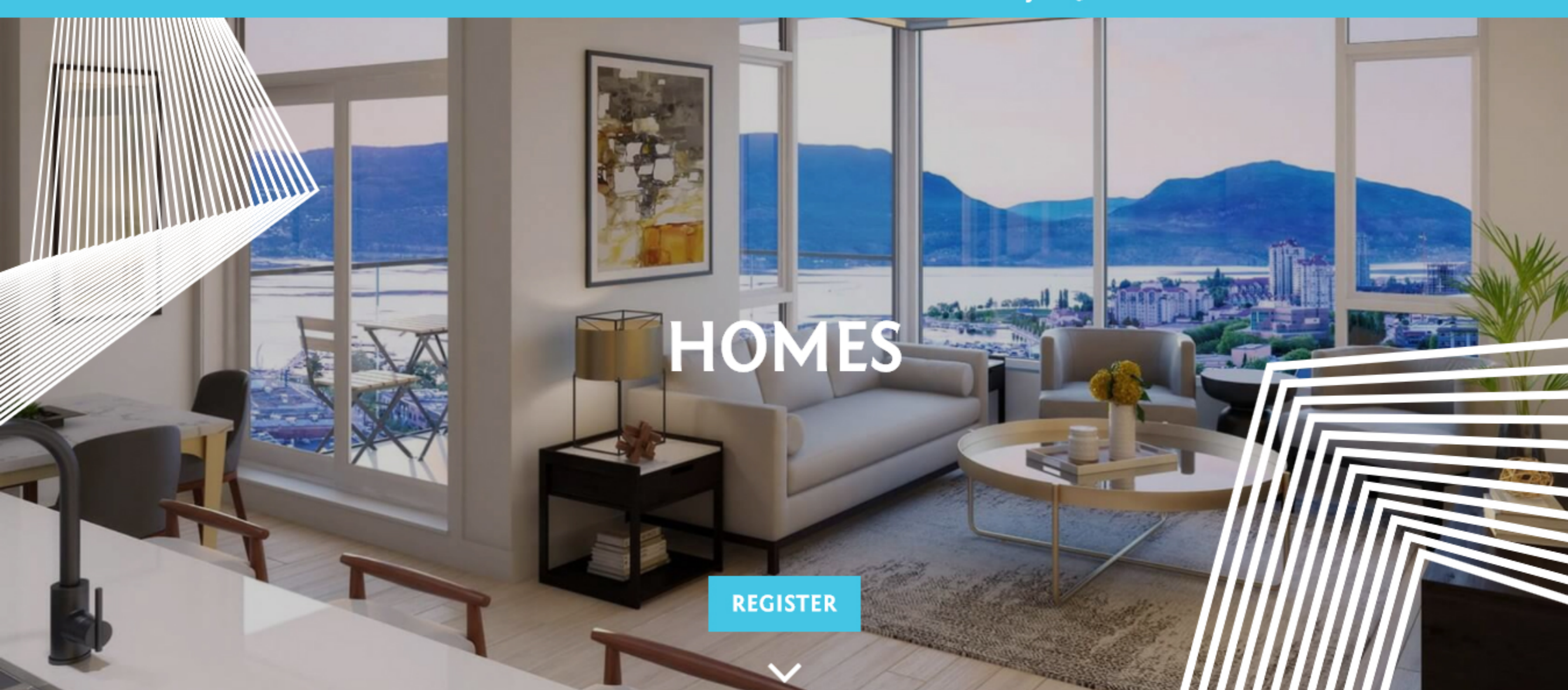
ELLA Community Address

1588 Ellis Street
Kelowna, BC

Presentation Centre +
Display Home

489 Bernard Ave
Kelowna, BC
Open By Appointment Only Until
January 19th, 2018

PRESENTATION CENTRE OPEN BY APPOINTMENT ONLY UNTIL JAN 19TH



HOMES

REGISTER

A New Standard in Contemporary Design

This boutique community sets a new standard in contemporary design, with i3 Design Group's stunning modern interiors incorporating a luxury of fine finishes, European-style kitchens, and elegant bathrooms. Expansive private decks and terraces are thoughtfully designed to maximize city, lake, and mountain views. The exclusive building lobby invites sophistication while welcoming you and your guests, with sleek styling that retains all the enchantments and comforts of home.

TAKE OUR VIRTUAL TOUR

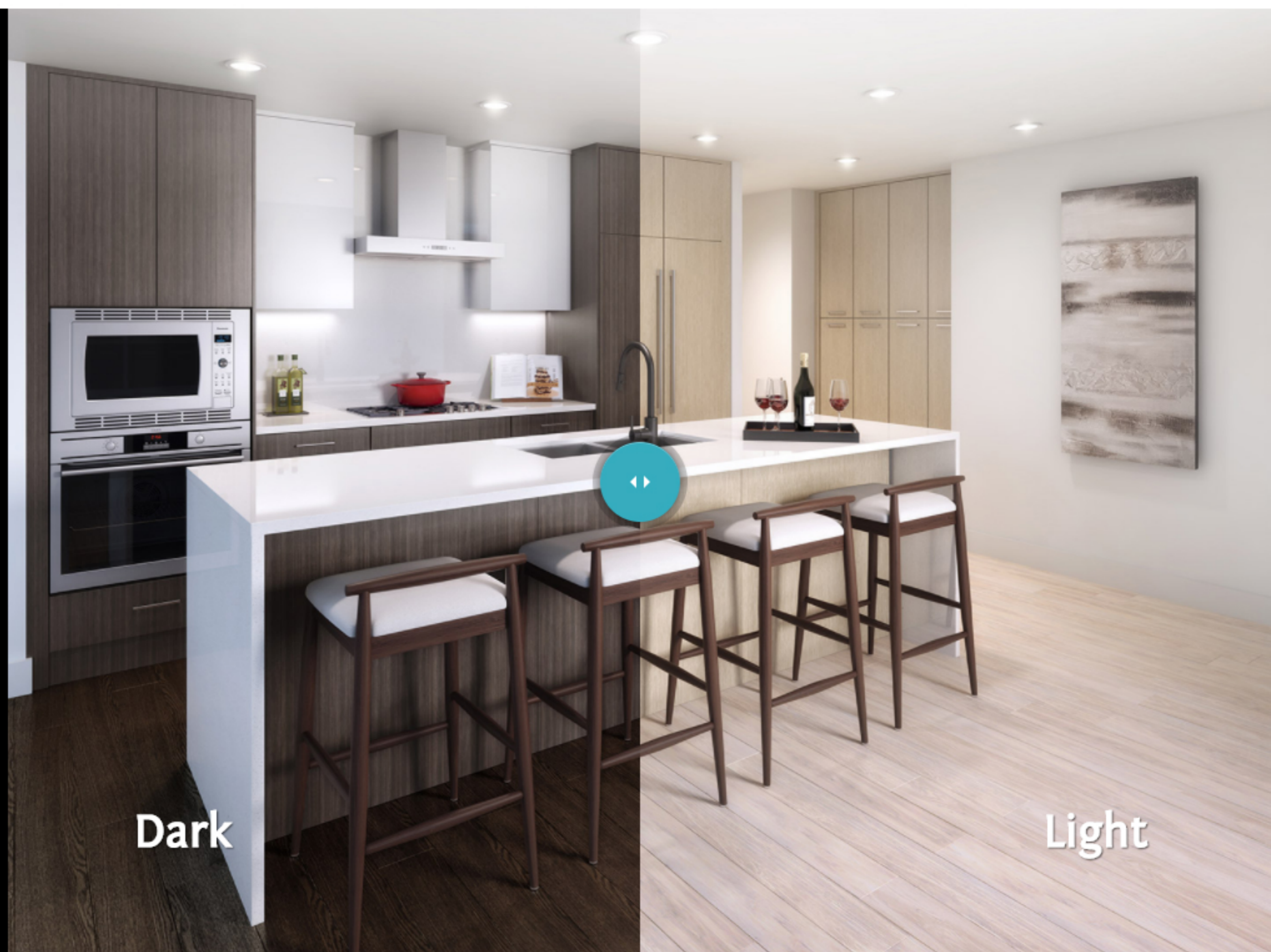


Colour Schemes

Choose from two distinct colour schemes to fit your individual design aesthetic. Warm, dark tones add richness to daily living, while lighter tones deliver a contemporary coolness. Both colour schemes are sleek and simple, creating the perfect backdrop to your personal touches.

KITCHEN

BATHROOM

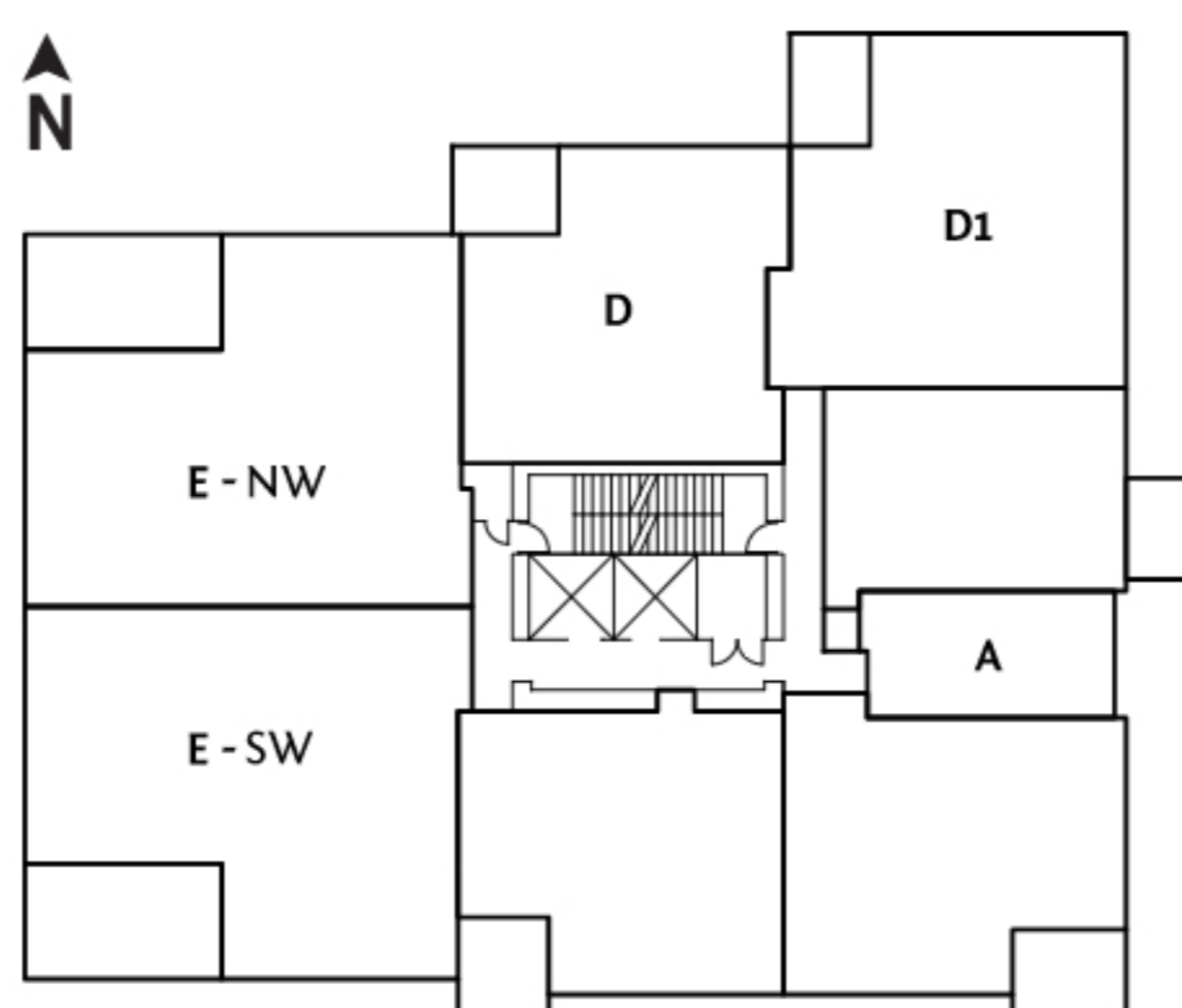


Dark

Light

FLOORPLANS

ELLA's unique floorplans are carefully considered to make daily living a pleasure and sweeping views take a central role. Click on a floorplan to see more details as well as the stunning views.



VIEWS

STUDIO

2 BEDROOM

2 BED + DEN



MISSION GROUP



info@liveatella.com

778.215.6788

REGISTER

ELLA Community Address

1588 Ellis Street
Kelowna, BC

Presentation Centre +
Display Home

489 Bernard Ave
Kelowna, BC
Open By Appointment Only Until
January 19th, 2018

PRESENTATION CENTRE OPEN BY APPOINTMENT ONLY UNTIL JAN 19TH



THE BERNARD DISTRICT

REGISTER

In the Heart of the Action

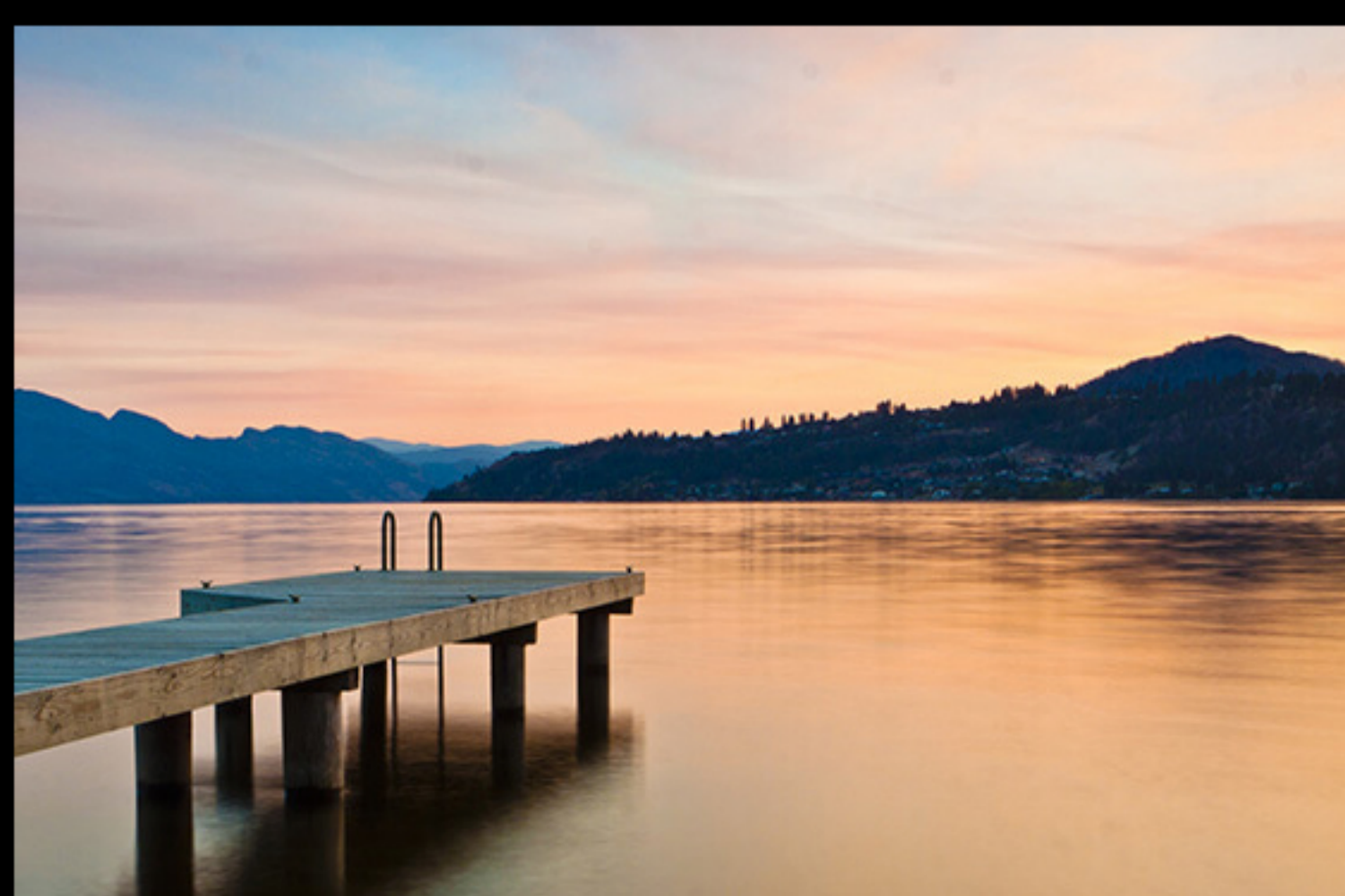
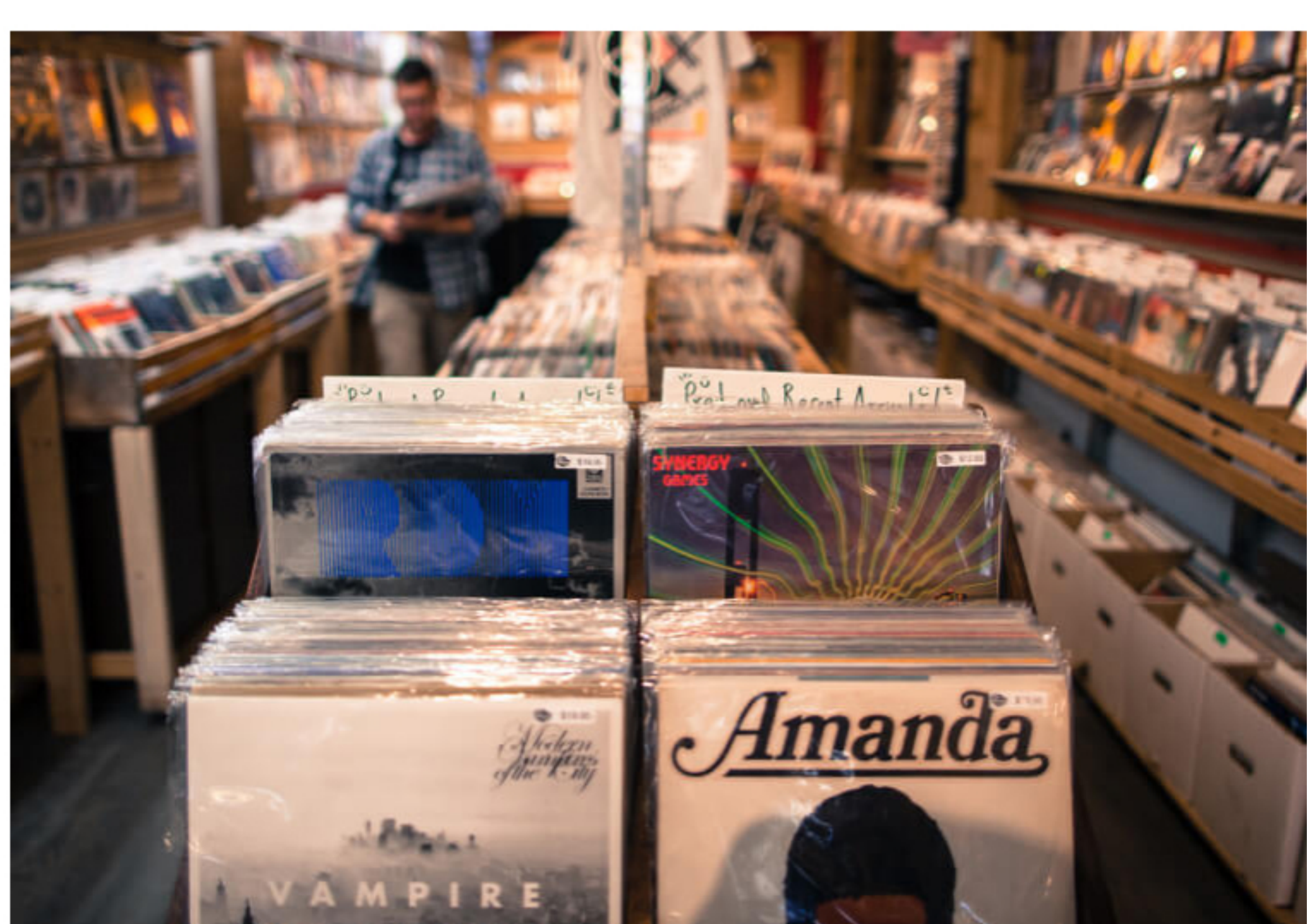
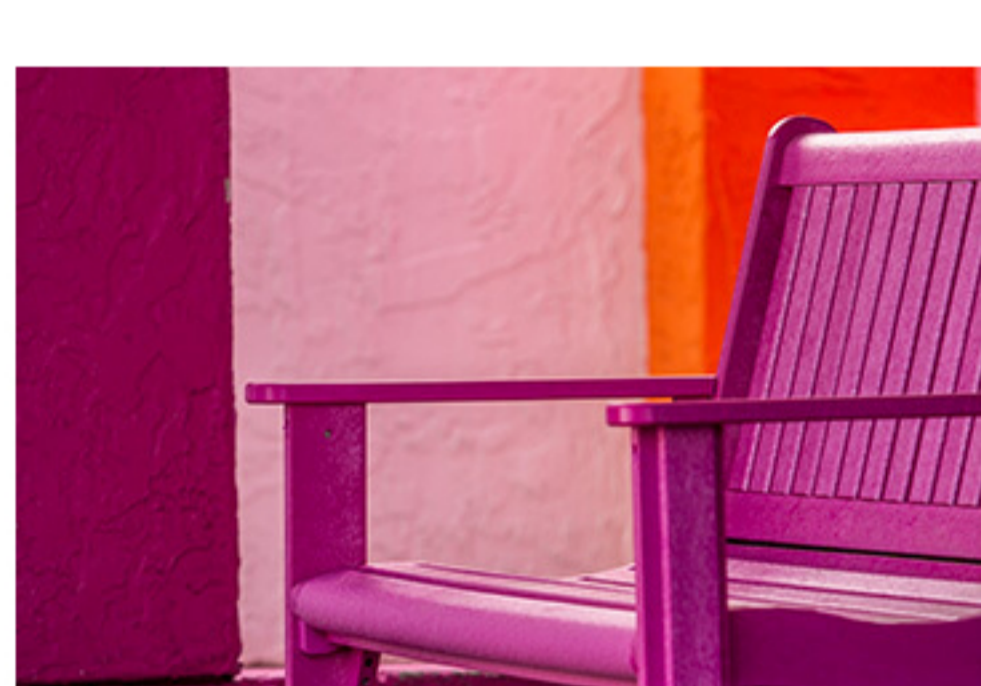
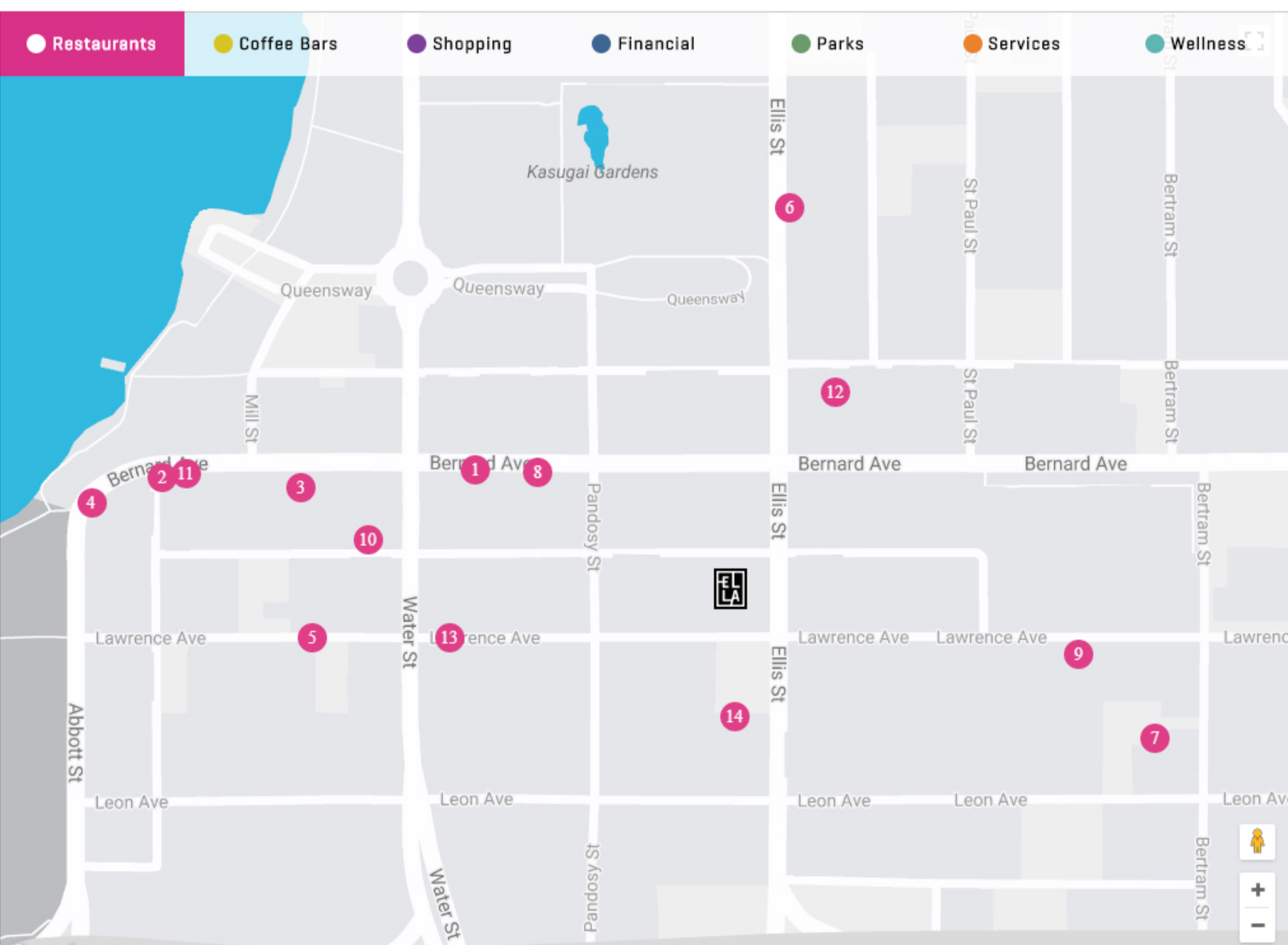
At the intersection of urban sophistication and natural beauty sits ELLA: the embodiment of exciting change in this coveted community. Situated in Kelowna's engaging Bernard District, ELLA puts you in the heart of the action, steps from exceptional dining, boutique shops, microbrew beer and artisan coffee, art galleries and more. A quick stroll brings you to the water's edge, where the bustling marina, pier and boardwalk beckon you to see the sun set over the lake.



Dine locally, dine well

at more than 60 delicious local restaurants, including:

- 1 Antico Pizza Napoletana
- 2 Bacaro Kitchen & Drink
- 3 Bai Tong Thai Food
- 4 Earls Kitchen + Bar
- 5 KRAFTY kitchen + bar
- 6 La Bussola Restaurant
- 7 Little Hobo Soup & Sandwich Shop
- 8 Momo Sushi
- 9 Naked Café
- 10 RauDZ
- 11 Salted Brick
- 12 The Bohemian Cafe
- 13 Wine & Art Wilbur's Piano Bar
- 14 Yamas Taverna



Okanagan Living

It's a life of lakes, wineries, and jaw-dropping scenery. It's boating in summer and skiing in winter. Daily life here is most people's dream vacation. Yet Kelowna is also a significant tech centre, where all the appeal of Okanagan living comes with all the employment opportunity of the big city.

LEARN MORE



info@liveatella.com
778.215.6788

REGISTER

ELLA Community Address
1588 Ellis Street
Kelowna, BC

Presentation Centre +
Display Home

489 Bernard Ave
Kelowna, BC
Open By Appointment Only Until
January 19th, 2018

PRESENTATION CENTRE OPEN BY APPOINTMENT ONLY UNTIL JAN 19TH

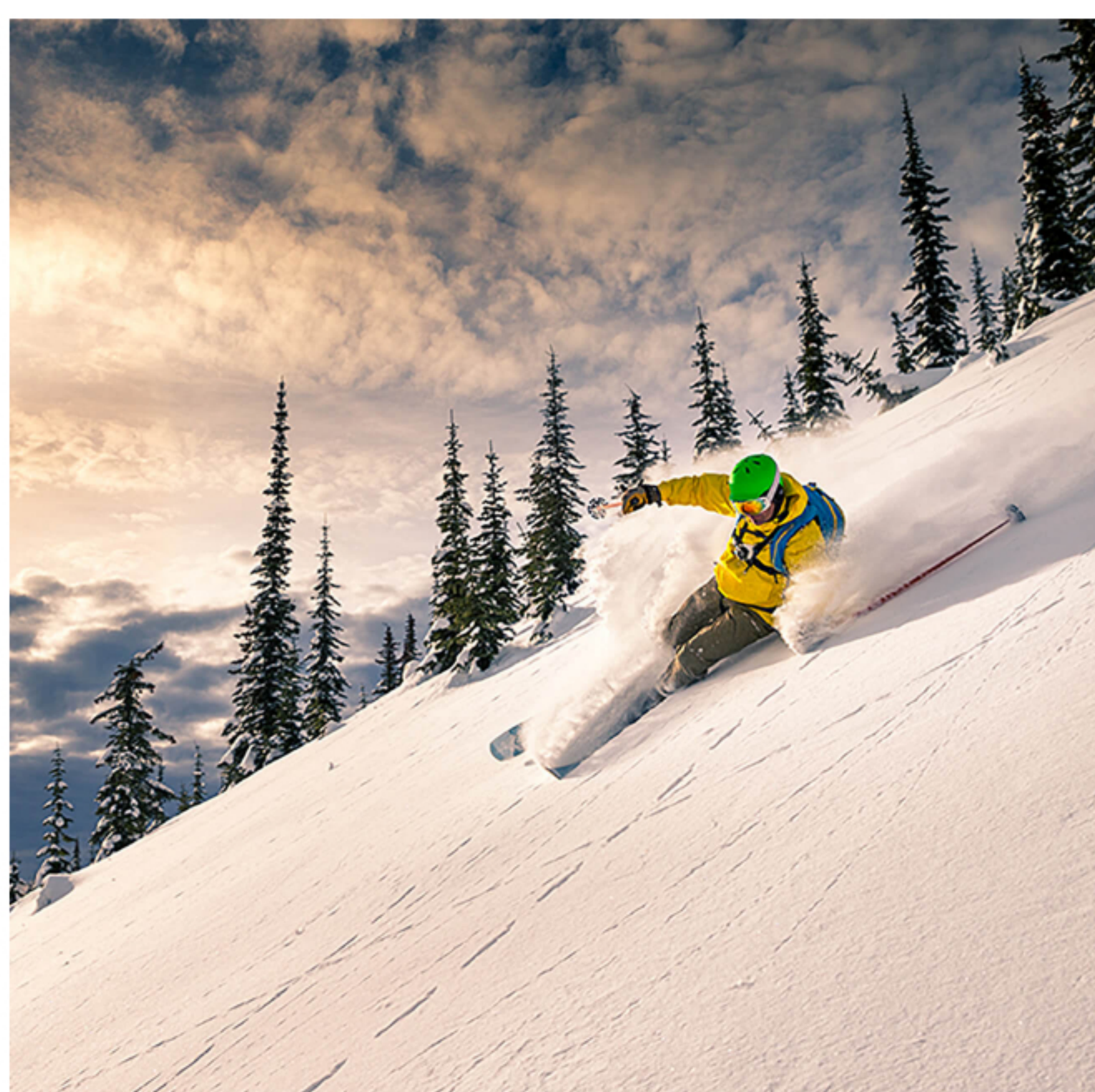
OKANAGAN LIVING

REGISTER

A Life Like No Other

Just moments from your front door, all the Okanagan opens up to you... Over 200 sun-drenched wineries wind their way across this incredible landscape. More than a dozen lakes and sandy beaches await your exploration, while multiple ski resorts boast champagne powder and charming villages. Lush green valleys dotted with orchards offer a bounty of sun-ripened fruits, surrounded by golden hills and windswept grasslands that define this unique topography.

It's a place like no other, and a life of living well.



The Bernard District

The streets of downtown Kelowna's engaging Bernard District are lined with brick heritage buildings, offering up an urban bounty of independent coffee shops, contemporary restaurants and boutique shopping, with the lakeshore a languid moment away.

LEARN MORE



MISSION
GROUP



info@liveatella.com

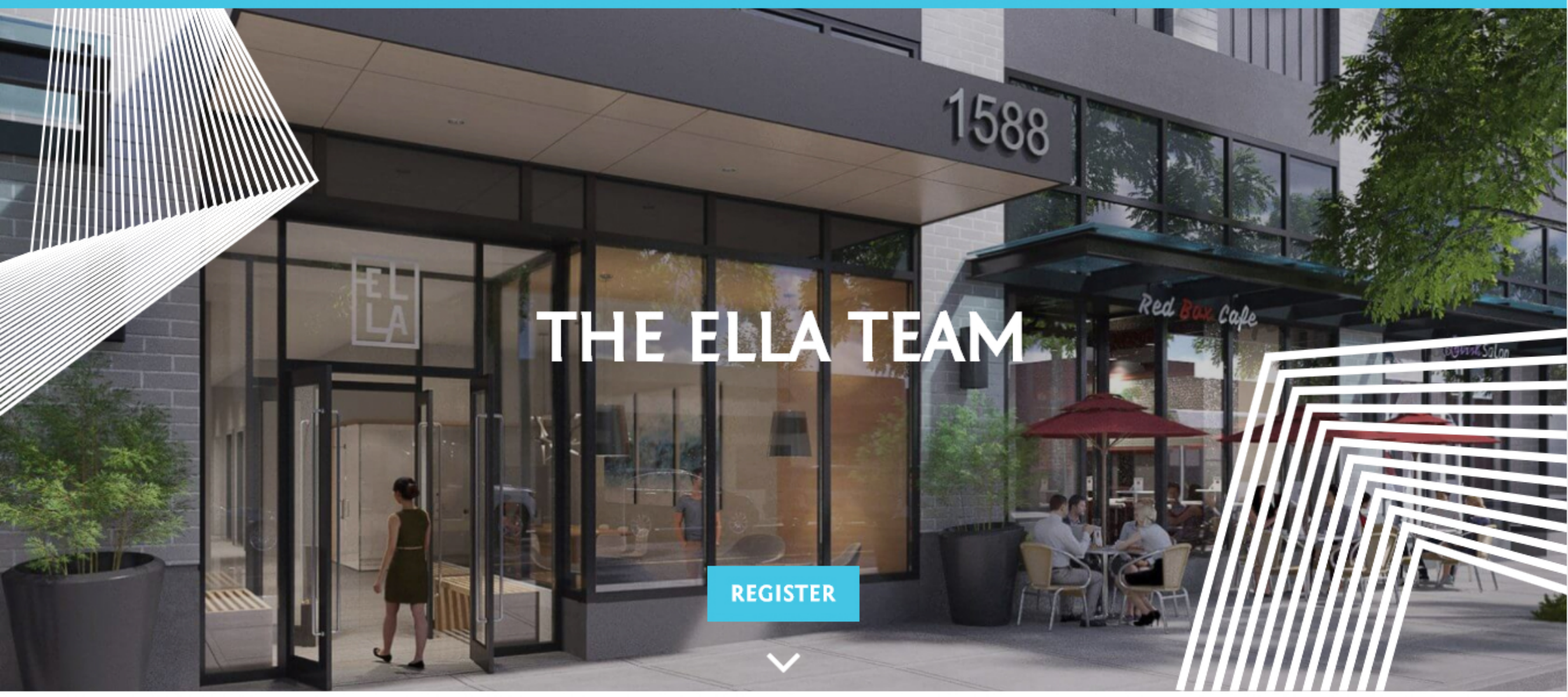
778.215.6788

REGISTER

ELLA Community Address

1588 Ellis Street
Kelowna, BCPresentation Centre +
Display Home489 Bernard Ave
Kelowna, BC
Open By Appointment Only Until
January 19th, 2018

PRESENTATION CENTRE OPEN BY APPOINTMENT ONLY UNTIL JAN 19TH


[REGISTER](#)


Mission Group

Mission Group is dedicated to providing an outstanding home ownership experience. We know that well-planned, well-built homes in beautiful settings give our homeowners a sense of pride and fulfillment, and a place to create lasting memories of their own.

We endeavour to treat our customers better. Our business is distinguished by the originality and innovation we show in our communities. We don't just build your home, we build your community. From start to finish - planning, design, construction, and customer care - we want to be known for going that extra mile, respecting our customers above all else, and exhibiting excellence at every turn.

Building Different. By Design.

Mission Group takes an Inspired Green® approach with all their communities for a reduced environmental footprint in four key areas: energy, water, air quality, and recycling. ELLA is targeting to be Kelowna's first LEED® Certified concrete residential building, offering the highest environmental standards ever achieved for new condominiums in Kelowna.

[LEARN MORE](#)


IBI Group

IBI Group is a globally integrated architecture, planning, engineering, and technology firm. From highrises to industrial buildings, schools to state-of-the-art hospitals, transit stations to highways, airports to toll systems, bike lanes to parks, IBI designs every aspect of a truly integrated city for people to live, work, and play.

IBI Group's collaborative and combined approach focuses not only on creating the best solutions today, but also formulating the right solutions for tomorrow. IBI believes cities must be designed with intelligent systems, sustainable buildings, efficient infrastructure, and a human touch.

[LEARN MORE](#)


i3 Design

i3 Design is a multi-disciplinary design firm offering a full range of services to both single and multi-family home builders. i3 Design's areas of expertise cover the complete range of project needs, from the most preliminary design stages to final completion. With a team of some of the best designers and CAD techs in the industry, i3 Design is a creative inspiration to western Canada's design trends.

[LEARN MORE](#)

info@liveatella.com

778.215.6788

[REGISTER](#)

ELLA Community Address

1588 Ellis Street
Kelowna, BC

Presentation Centre + Display Home

489 Bernard Ave
Kelowna, BC
Open By Appointment Only Until
January 19th, 2018

PRESENTATION CENTRE OPEN BY APPOINTMENT ONLY UNTIL JAN 19TH



REIMAGINE YOUR FUTURE

REGISTER

REGISTER NOW

Register below for inside information on the city's most contemporary concrete condominium opportunity and receive:

- Advance news and community information
- Invitations to exclusive preview events
- Advance selection and purchase opportunities – before the general public

First Name *

Last Name *

Email *

Phone *

Where did you hear about us? *

Are you a realtor?

SUBMIT

By selecting "Submit", you consent to Mission Group contacting you regarding their developments, events, announcements, or other publications. This information is not shared or distributed to any other parties and you may unsubscribe at anytime.



info@liveatella.com

778.215.6788

REGISTER

ELLA Community Address

1588 Ellis Street
Kelowna, BC

Presentation Centre +
Display Home

489 Bernard Ave
Kelowna, BC
Open By Appointment Only Until
January 19th, 2018