

Interior



A no-compromise kitchen:
Open concept kitchen and modern appliances add sheen and style. There's also the slickest backsplash you've ever laid eyes on.



More than enough space:
Overheight ceilings, clean lines and a well-designed kitchen mean this home performs like it's much larger.



Bonus details in your home:
From elegant hardwood laminate flooring to double-pane windows, nice touches are everywhere.

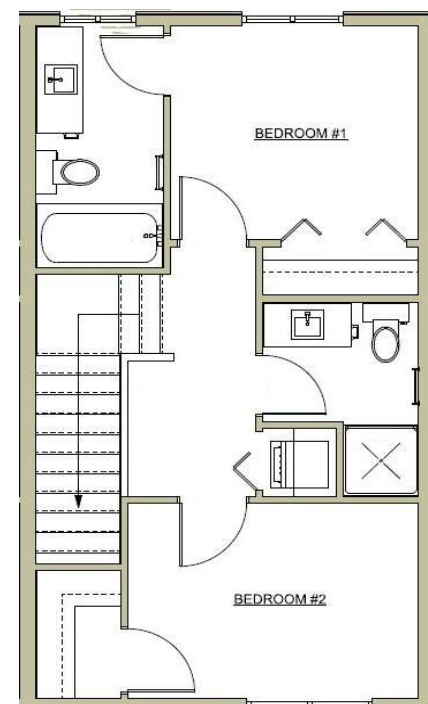
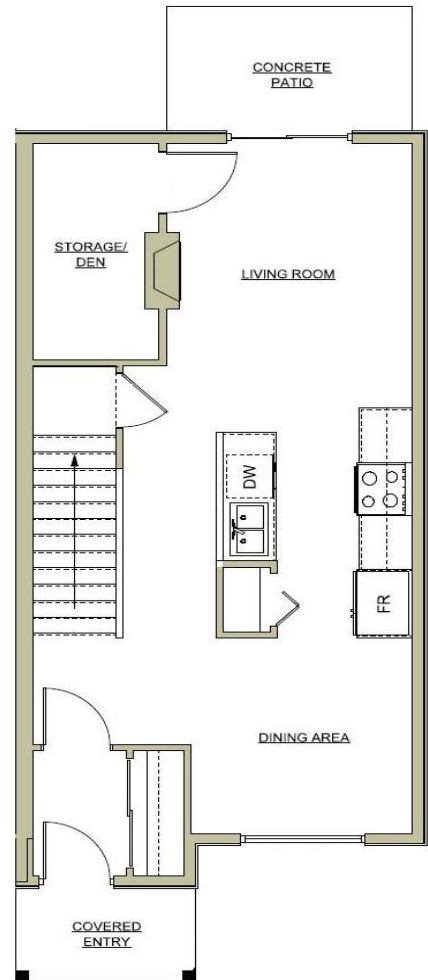
Floor Plans

SPECS

- Spacious and functional floor plans
- Open-concept contemporary kitchen
- Kitchen backsplash - ceramic tiles
- Stainless steel double sink with single lever faucet and vegetable sprayer
- Halogen pot lights in the kitchen
- Valance lighting over work area
- Bathrooms - Ceramic tile flooring and acrylic tub/shower surround
- Contemporary vanity with white porcelain basin and chrome low-flow fixtures
- Mirrors in all bathrooms
- White decora switches and receptacles throughout
- Solid surface laminate flooring and/or carpet through-out
- 4-1/2" baseboards, 3" door trim
- Forced air heating in the upper suite
- 5 appliances including washer, dryer and variable speed exhaust fan

BONUS FEATURES

- Baseboard heaters with thermostats in every room
- All rooms, walls & ceilings painted with low-VOC paint
- 40 gallon hot water tank
- 2/5/10 Home warranty program
- One powered parking per bedroom



Square Feet: 1000