

REGISTER

立即登記



Close

NEW BUILDING RELEASE COMING SOON

Condos starting from the low \$200,000's

20-ACRE MASTERPLAN COMMUNITY
5 ACRES OF PARKS & TRAILS
CLUBHOUSE, DAYCARE & RESTAURANT

► Find out More Today

*Visit us for details.



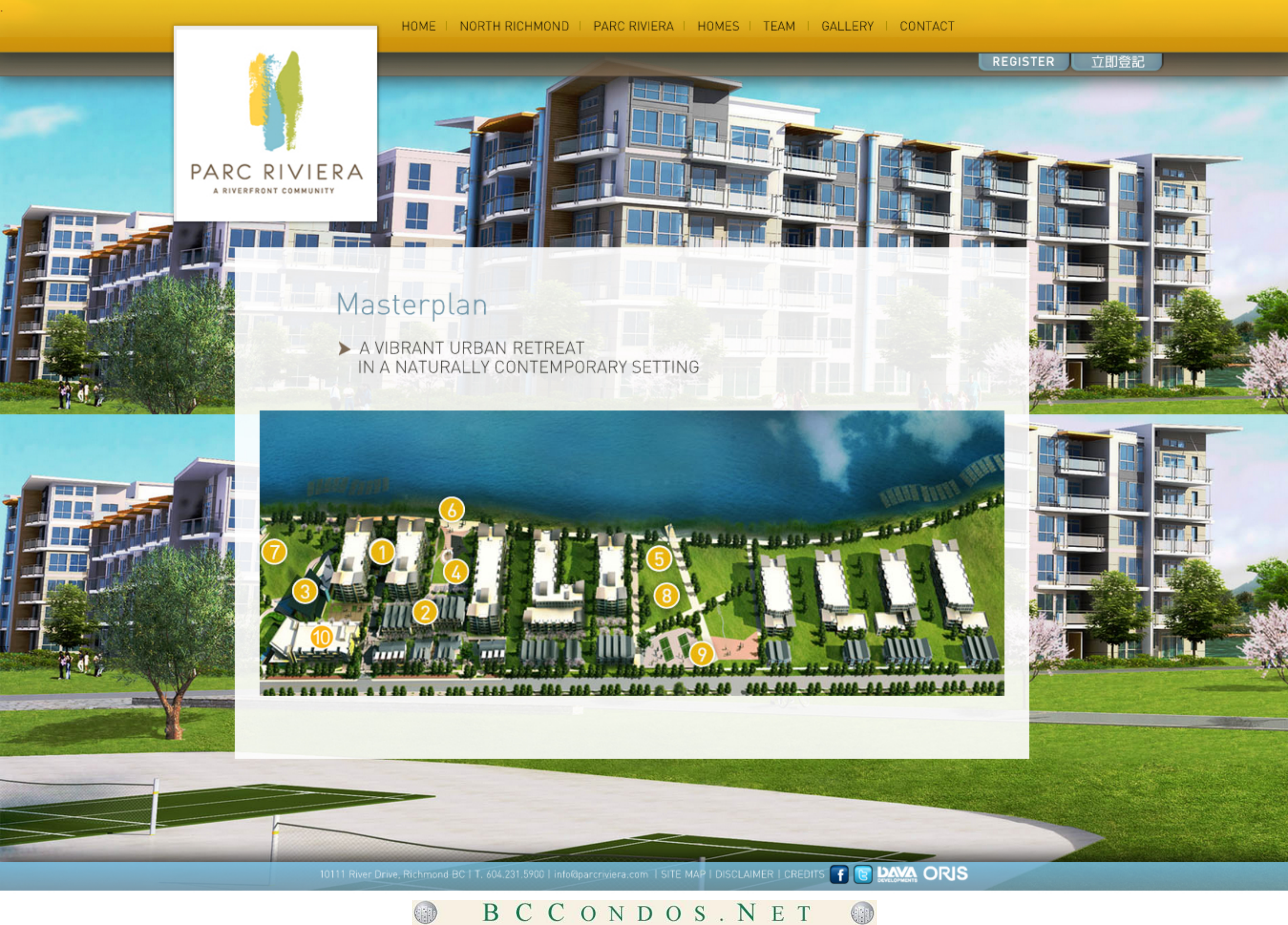


Parc Riviera | North Richmond, BC

► A COMMUNITY WITH IT ALL.

Parc Riviera is close to work, friends, family and the neighbourhood you know and love. And its parks, gardens, and trails let you walk the dog, exercise, and spend time with your family without ever leaving home.





Masterplan

▶ A VIBRANT URBAN RETREAT
IN A NATURALLY CONTEMPORARY SETTING





Parc Riviera | Homes

► REDEFINING URBAN LUXURY AT THE RIVER'S EDGE

Parc Riviera's apartment and townhome residences have been created to maximize space, light, and connections to the natural world around them. Apartments are architecturally stepped from four to six storeys to maximize river views, let in the sun, and create a sense of openness. The two and three level townhomes are set along pedestrian-friendly River Drive, echoing the character of the existing single-family homes that originally formed the Tait neighbourhood. Inside, Parc Riviera's residences will not only provide you with every luxury, but offer you an uncommon standard of value and convenience.

[Click here for New Condo Home Plans](#)





Parc Riviera | Features & Amenities

► STYLE. COMFORT. LUXURY.

ECO-CONSCIOUS

- Geothermal heating & air conditioning technology
- EnergyStar appliances throughout
- Energy & water efficient Amana washer & dryer

GOURMET KITCHENS

- Quartz countertops
- Stainless steel GE Café appliances including:
 - 5-burner, dual fuel convection gas range with baking drawer
 - Fridge with bottom mount freezer
 - French Door fridges with bottom mount freezer in select homes
 - Dishwasher
- Panasonic above the range microwave & hood fan
- Breakfast bar in select homes
- Sonetto stainless steel undermount sink
- Häfele kitchen organizers
- Glass tile backsplash
- Under cabinet LED lighting

BLISSFUL BATHROOMS

- Quartz countertops
- Large format imported porcelain tile flooring
- Full height imported porcelain shower surround with polished accents
- Undermount sink by Chelini
- Chelini dual-flush toilet with soft close cover
- Maax soaker tub
- Taymor and Grohe fixtures

LUXURY LIVING

- Airy 9' ceilings
- Hardwood flooring throughout living & dining areas
- Oversized balconies with granite tile flooring
- Cozy carpets in bedrooms
- Roller blinds

OUTDOOR SPACES

- 5 acres of park and open space
- 4,000 ft. of dyke trail for walking & biking
- Kid's playgrounds & family picnic areas

AMENITIES

- Extensive clubhouse
- Lap pool & hot tub
- Fitness centre
- Lounge
- 5,500 sq. ft. daycare
- Future restaurant and retail



Parc Riviera | Best Value

▶ WITH AN INSPIRED COLLECTION OF HOMES THAT ARE PART OF A MASTERPLANNED COMMUNITY THAT WILL INCLUDE A CLUBHOUSE, RESTAURANT, RETAIL SPACE AND COMMUNITY AMENITIES LIKE A 5,500 SQ. FT. DAYCARE CENTRE, PARC RIVIERA OFFERS YOU THE BEST RIVERFRONT VALUE IN RICHMOND.

This is your ground floor opportunity to take advantage of the Lower Mainland's best riverfront value. With unmatched amenities, spectacular location and incredible ground floor pricing, Phase 1 of Parc Riviera is your first and best opportunity to own in what is going to be a defining new riverfront community.





Development Team

► A NATURAL PARTNERSHIP

The Parc Riviera team combines a passion for Richmond with a reputation for creating outstanding communities. This master-planned retreat represents the best of Dava Developments and Oris Consulting.

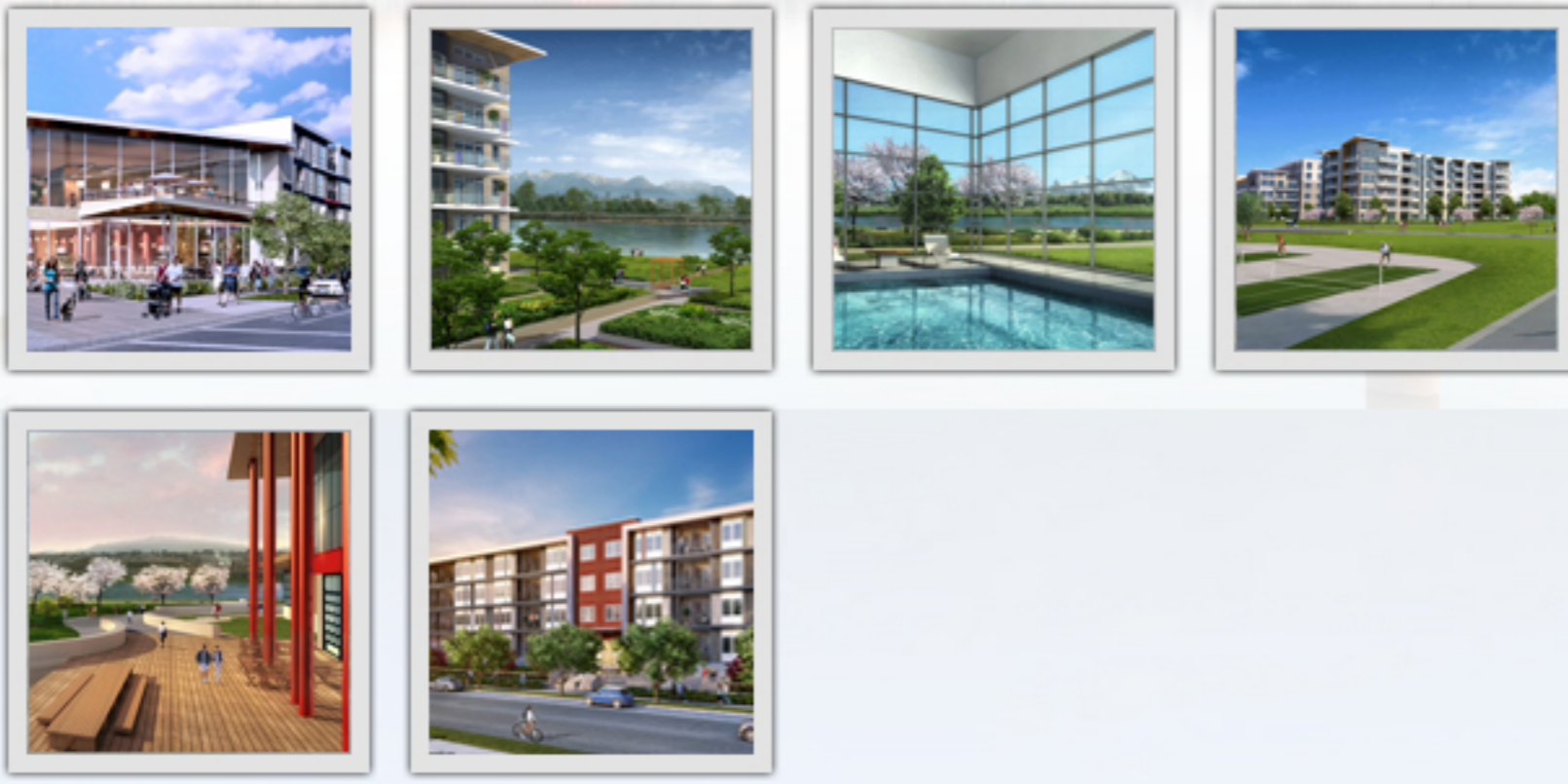
Award-winning Dava Developments is well-established throughout Richmond, with a business philosophy founded on superior, sustainable design and exceptional craftsmanship. Portfolio highlights include Residences at the River, Parc Camelot, Alderbridge Business Centre, and Rivers Edge Business Park.

Oris Consulting has been revitalizing urban neighbourhoods for over 30 years, with environmental sustainability as one of their core values. Examples of their enviable Richmond communities include Alexandra Gate and the Georgie-winning London Landing in Steveston.

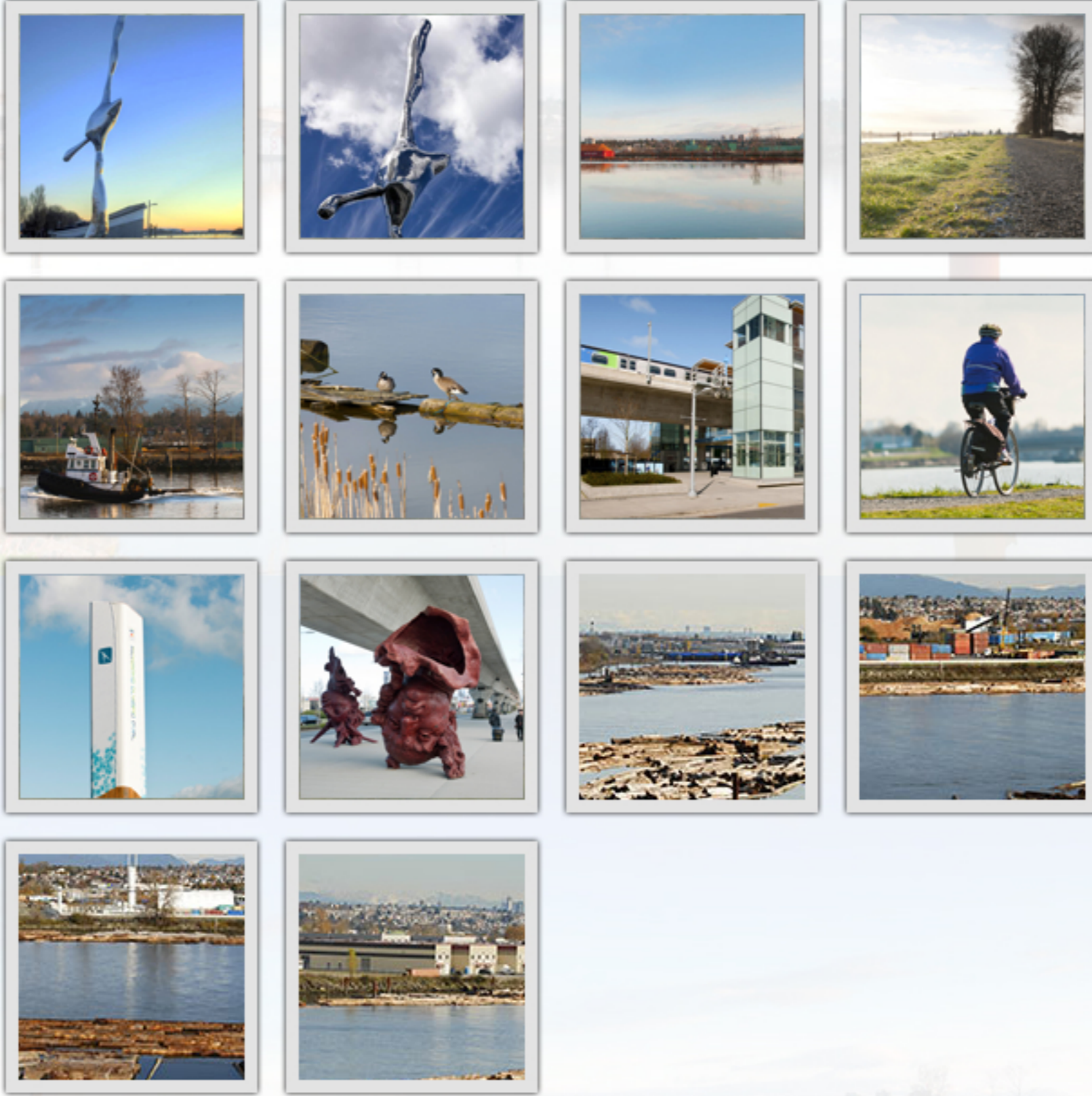




Renderings



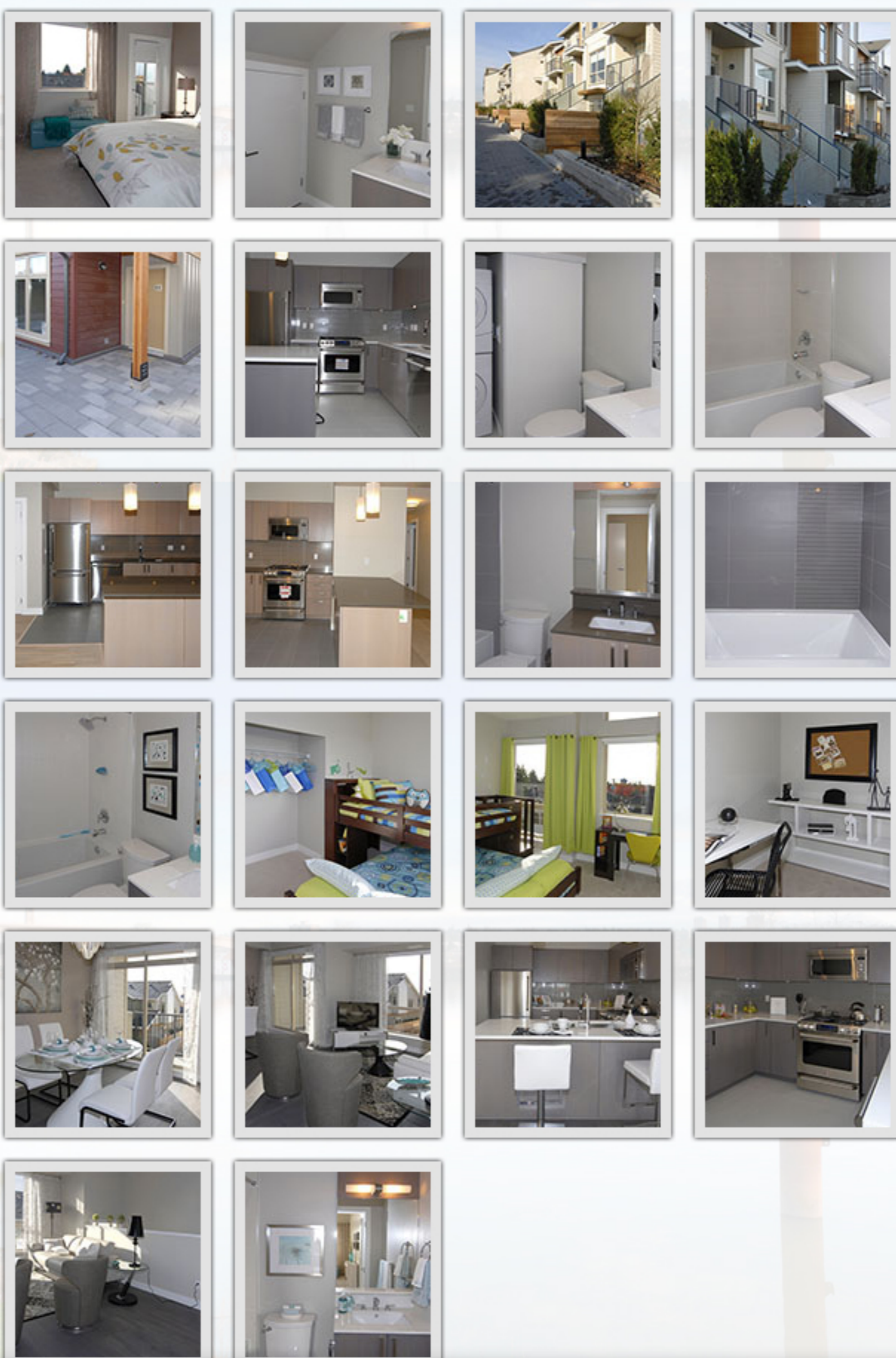
Area Scenery



Condo Display Suite



Townhomes





Contact Us

► PRESENTATION CENTRE

REGISTER TODAY to receive the latest information on Richmond's emerging riverfront community.

Presentation Centre:
10111 River Drive, Richmond BC

T. 604.231.5900
E. info@parcriviera.com

