



An Exclusive Enclave of Parkside Townhomes



Large 3 Bedroom & Flex Homes from the low

\$400's

Embraced by a natural landscape of towering trees and lush greenery, the Heritage-inspired architecture of these 3 Bedroom & Flex homes bring together every comfort and convenience. Sweeping interiors flow seamlessly with brightness and flair. Outdoors, unwind and enjoy your private fenced yard. Redwood is the perfect place to call home.

Visit our Two Display Homes Open Daily 12-5pm (Closed Fridays)
6929 142nd Street, Surrey BC

604-503-6929



TreeHouse

The true heart of this community is the TreeHouse amenity building. Start your day with an invigorating workout in the fitness area or take advantage of some down-time and relax on the expansive deck while the kids burn off youthful energy in the outdoor play areas. Later in the evening, invite friends and family over for a get together at the fireside lounge complete with a kitchen and BBQ patio. The TreeHouse is a welcome place for recreation, relaxation and rejuvenation.



Lower



Upper

[Download Treehouse](#)

Visit our Two Display Homes Open Daily 12-5pm (Closed Fridays)
6929 142nd Street, Surrey BC

604-503-6929



Floor Plans

Natural Setting

Beautifully designed to compliment the surrounding natural beauty, the homes at Redwood are set amidst lush groves of mature trees and ample green space. This warm and welcoming collection of townhomes showcase dramatic peaks, extensive wood and stone detailing with durable hardieplank siding. Far more than just a home, Redwood is a place that exudes fresh and flexible living and with a crew of landscape experts to maintain your beautiful outdoor space, you are left with more time for the activities that matter to you most!



Choose a Plan [A](#) | [B](#) | [C](#) | [D](#)

Alder Series
3 Bedroom & Flex | 2.5 Bath
Approx. 1,872 - 1,890 sq.ft

Birch Series
3 Bedroom & Flex | 2.5 Bath
Approx. 1,881 sq.ft

Cedar Series
3 Bedroom & Flex | 2.5 Bath
Approx. 1,895 sq.ft

Douglas Series
3 Bedroom & Flex | 2.5 Bath
Approx. 1,881 sq.ft

[Download Site Plan](#)

Visit our Two Display Homes Open Daily 12-5pm (Closed Fridays)
6929 142nd Street, Surrey BC

604-503-6929



Features

Distinctive Design

Impeccably designed for families of all ages, the homes at Redwood are in a word - impressive. Open floor plans are carefully designed to offer extra space and flexibility. With your choice of two designer selected colour schemes, some of the classic finishes include crown moulding, wood encased windows and warm, wide-plank laminate hardwood.

A gourmet's delight, the open kitchen features custom shaker cabinetry with under lighting, quartz countertops and stainless steel appliances. After a long day, retreat to your beautiful ensuite. A large soaker tub takes centre stage, while the glass shower with mosaic accent tiles, shaker cabinets and quartz countertops complete the spa-like ambience.

A PERFECT PLACE

- An exclusive enclave of twenty-four 3 Bedroom & Flex Townhomes set amidst lush groves of mature trees and ample green space
- On a quiet no-thru residential street in the established Hazelnut Meadows neighbourhood, ideally situated beside a park and elementary school
- Secure and spacious garages for two cars side-by-side with plenty of room for storage
- Entertainment-sized decks off the main level of living overlooking or accessible to your privately fenced yard with sprinkler system
- The TreeHouse amenity building - Workout in the fitness area, relax on the expansive deck or entertain friends and family at the fireside lounge with kitchen and BBQ patio

WELCOMING EXTERIORS

- Heritage-inspired architecture showcase dramatic peaks, durable HardiPlank™ siding complimented with extensive wood and stone detailing
- Iron-style fence and post entry gates

GOURMET KITCHENS

- Well-appointed shaker cabinetry with under cabinet lighting and iron hardware on soft-close doors and drawers
- Polished quartz countertops and elegant ceramic tile backsplash with glass accents for everyday luxury
- Convenient full-height pantry for storage
- Durable and easy to maintain laminate hardwood flooring complements the cabinetry
- Kitchen island for extra cooking space or eating bar for two or more
- Clean up is a breeze with an undermount stainless steel sink, garburator, single-lever low-flow faucet and pullout vegetable spray with flex line
- Innovative and stylish stainless steel appliances coordinate beautifully:
 - Samsung Energy Star counter-depth French Door Refrigerator and Freezer with ample storage plus icemaker
 - Self-cleaning Whirlpool Electric Range with ceramic glass cooktop

EVERYDAY CONVENIENCE

- Generous storage space including built-in closet shelving and custom organizers in master dressing room
- Full rough in for built-in vacuum
- Fitting laundry rooms and linen closets
- Front and rear garden hose bibs for all your outdoor needs
- Curbside garbage and recycling pickup
- Amble visitor parking
- SHAW Welcome Home Package that includes one year's free Fibre Optic Personal TV, High Speed 10 Internet and optional HDPVR, HD Box or Gateway

SAFE AND SECURE

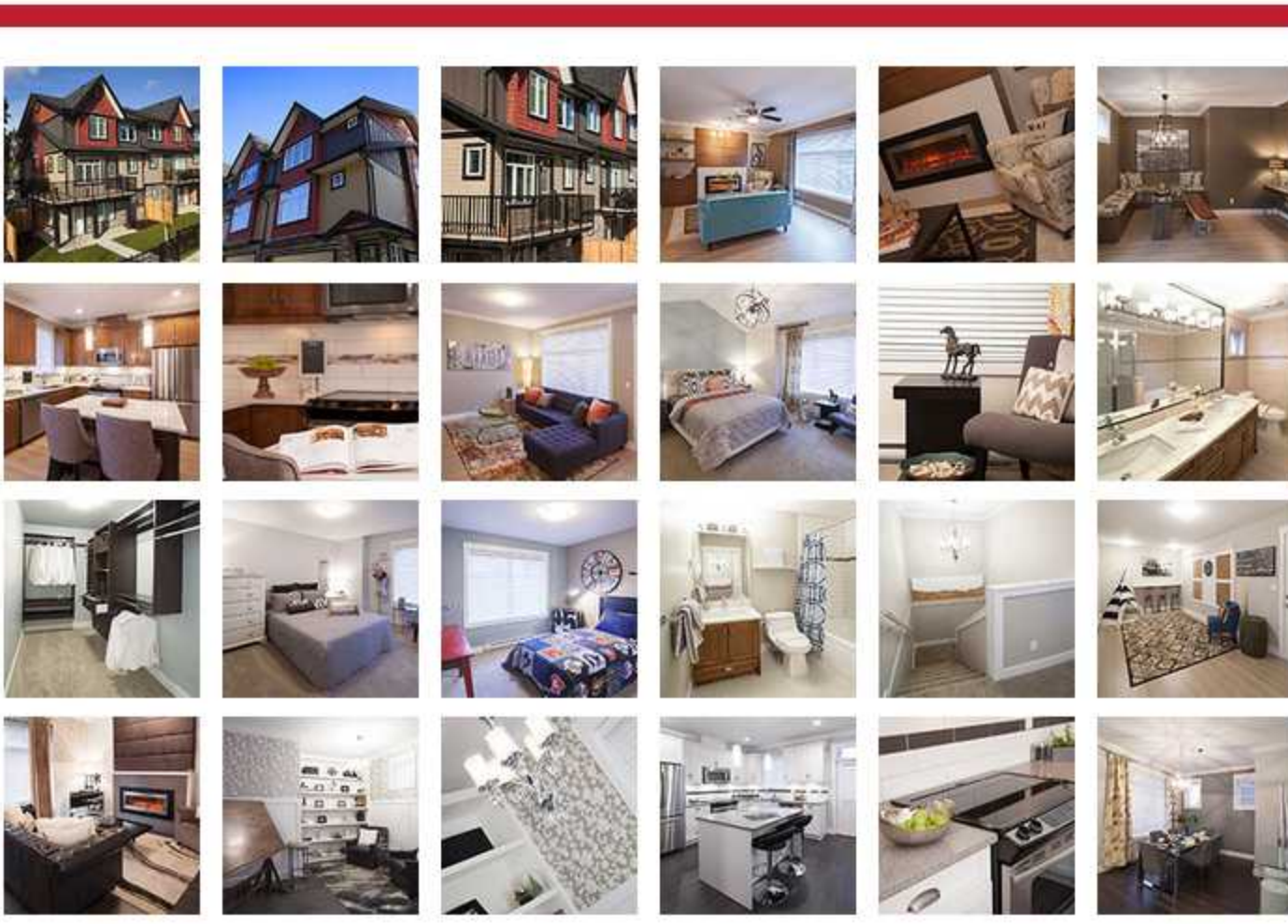
- Quality Assurance by Hazelnut Homes Ltd. Customer Care Program
- CONASYS Homeowner Care Portal and printed Homeowner Guide
- Hard wired smoke and carbon monoxide detectors
- New Home Warranty coverage from Pacific Home Warranty including:

Visit our Two Display Homes Open Daily 12-5pm (Closed Fridays)
6929 142nd Street, Surrey BC

604-503-6929



Gallery

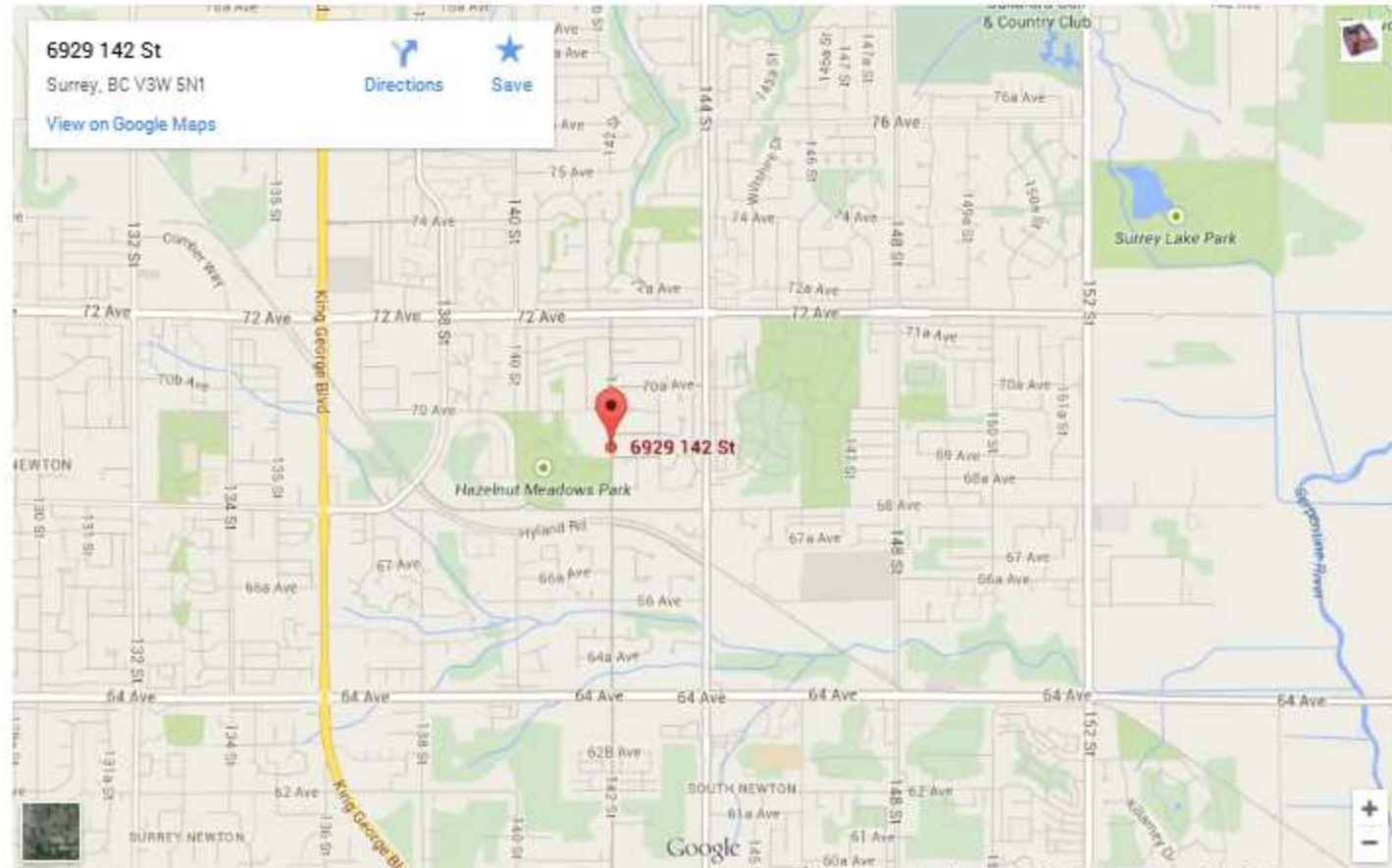


Visit our Two Display Homes Open Daily 12-5pm (Closed Fridays)
6929 142nd Street, Surrey BC

604-503-6929



Contact



Visit our Two Display Homes Open Daily 12-5pm (Closed Fridays)
6929 142nd Street, Surrey BC

604-503-6929



Team

Hazelnut Homes

At Hazelnut Homes Inc. we are dedicated to building homes with quality design, sound construction and exceptional customer service. Plus being from the neighbourhood, we have a strong understanding of the importance of a great location. With over 25 years of experience in new home construction - from our top quality management and experienced trades people to our exceptional warranty - every detail of your new home has been carefully considered so that you can own with confidence for many years to come.



Pacific Home Warranty

Pacific Home Warranty, approved by the Homeowner Protection Office of British Columbia, provides the highest value home warranty program in Canada by assuring your home will continue to provide you comfort and security for many years to come. Our comprehensive coverage includes:

- 2 Year Mechanical Systems Warranty
 - 12 months for material and labour in your home areas
 - 15 months for material and labour in common areas
 - 24 months for material and labour in major systems
- 5 Year Foundation Water Penetration Warranty
- 10 Year Structural Defect Warranty



Complete Home Design

Complete Home Design is an interior design firm who specializes in creating designs that combine harmony, style and unity. For Redwood their vision was to create a classic contemporary open space complimented by the natural earthiness of organic wood tones. Striking a balance between West Coast lifestyle and the sleekness of Contemporary living, Redwood offers the best of both worlds.



Axis Real Estate Solutions

AXIS is a hard-working, multifaceted real estate company dedicated to selling the best-built homes to all homebuyers. Their commitment to understanding the individual needs of each type of buyer, along with offering careful guidance in every aspect of the planning, design and marketing, ensures that the homes that are built are exactly what homeowners are looking for. From the moment a homebuyer steps into the Presentation Centre, to communicating construction updates or handing over the keys to the new homeowner, AXIS is there, providing an efficient and smooth home buying experience. The team at AXIS is proud to bring you their latest offering - Redwood in Surrey.



Visit our Two Display Homes Open Daily 12-5pm (Closed Fridays)
6929 142nd Street, Surrey BC

604-503-6929