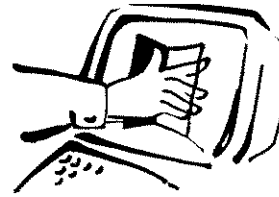


BC OnLine



BC OnLine Land Title Internet Service
Provided in co-operation with
Land Title and Survey Authority

LTSA - DOCUMENT RETRIEVAL		REF# G11396	REQUESTED:2008-07-18 16:51
CLIENT NAME:	RE/MAX COMMERCIAL REALTY ASSOCI		
ADDRESS:	110 6086 RUSS BAKER WAY RICHMOND BC V7B 1B4		
PICK-UP INSTRUCTIONS:			
USER ID: PB63827	PLAN# LMS1709	LM Filed	RCVD:1998-02-05
ACCOUNT: 561684			
FOLIO			
REMARKS:			

Help Desk Victoria (250) 953-8200
In B.C. 1-800-663-6102
Administration Office ... (250) 953-8250
Fax Number (250) 953-8222

Persons who need to rely on a plan for legal purposes must examine the official version at the Land Title Office in which the plan is deposited. However, plans with plan numbers beginning with the letters EPP or EPS are electronic plans which constitute the official version.



FIRST SHEET, SHEET 1 OF 11 SHEETS

STRATA PLAN OF LOT 1, DISTRICT LOT 305, GROUP 2, NEW WESTMINSTER DISTRICT, PLAN LMP 17699

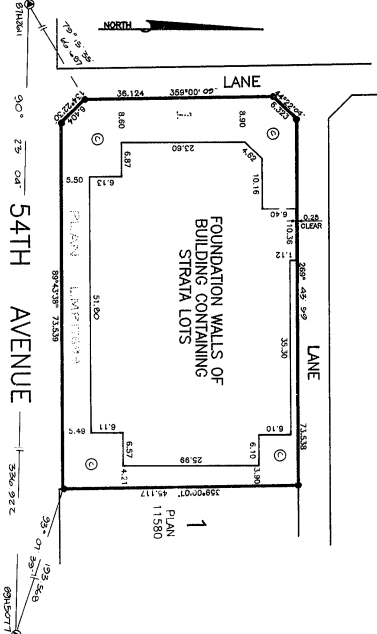
STRATA PLAN LMS /709 DEPOSITED AND REGISTERED IN THE LAND TITLE OFFICE AT NEW WESTMINSTER, BC THIS 18 DAY OF Nov 1994

GRAPHIC SCALE - METRES 1:500

ADDRESS FOR SERVICE OF DOCUMENTS: THE REGISTERED OFFICE OF AN LINC 279 33832 SOUTH FRASER WAY ABBOTSFORD, BC V2S 2C5

BUILDING NAME IS: CANALIA GARDENS

DEPUTY REGISTRAR



15-216-M3

LEGEND: SEE SHEET 3

1. ERIC N. PETERSON, A BRITISH COLUMBIAN LAND SURVEYOR OF LAMBIA, CERTIFY THAT THE BUILDING SHOWN IN THIS STRATA PLAN HAS BEEN PREVIOUSLY OCCUPIED, DATED THIS 29 DAY OF OCTOBER, 1994.

THIS PLAN LIES WITHIN THE GREATER VANCOUVER REGIONAL DISTRICT

THIS PLAN LIES WITHIN THE CITY OF LANGLEY

ERIC PETERSON LAND SURVEYING LTD., 33848 BERRINGER AVENUE ABBOTSFORD, B. C. V2S 2H4

5194-2399

CONDOMINIUM ACT

STRATA PLAN LMS /709

SECOND SHEET 2 OF 11 SHEETS

Table with columns: STRATA LOT NUMBER, SHEET NUMBER, UNIT ENTITLEMENT, SCHEDULE OF UNIT ENTITLEMENT, FORM 1 UNIT ENTITLEMENT, SCHEDULE OF INTEREST (PROS), FORM 2 INTEREST DESTROYED UPON, STRATA PLAN LMS /709

CONDOMINIUM ACT

STRATA PLAN LMS 1709

SECOND SHEET 3 OF 11 SHEETS

WE I, THE UNDERSIGNED DO SOLEMNLY DECLARE THAT 1) WE/I, THE UNDERSIGNED ARE FULLY AUTHORIZED REPRESENTATIVE(S) FOR THE OWNER-DEVELOPER. 2) THE STRATA PLAN IS ENTIRELY FOR RESIDENTIAL USE

WE/I MAKE THIS SOLEMN DECLARATION AND STATE THAT IT IS OF THE SAME FORCE AND EFFECT AS IF MADE UNDER OATH, IN THE PROVINCE OF BRITISH COLUMBIA. THIS 2 DAY OF NOV 1994

A NOTARY PUBLIC IN AND FOR THE PROVINCE OF BRITISH COLUMBIA. SIGNATURES AS REQUIRED

NOTARY PUBLIC SIGNATURE

Eric N. Peterson, Land Surveyor, 33832 South Fraser Way, Abbotsford, BC V2S 2C5

Witnesses: ... Occupation of witnesses

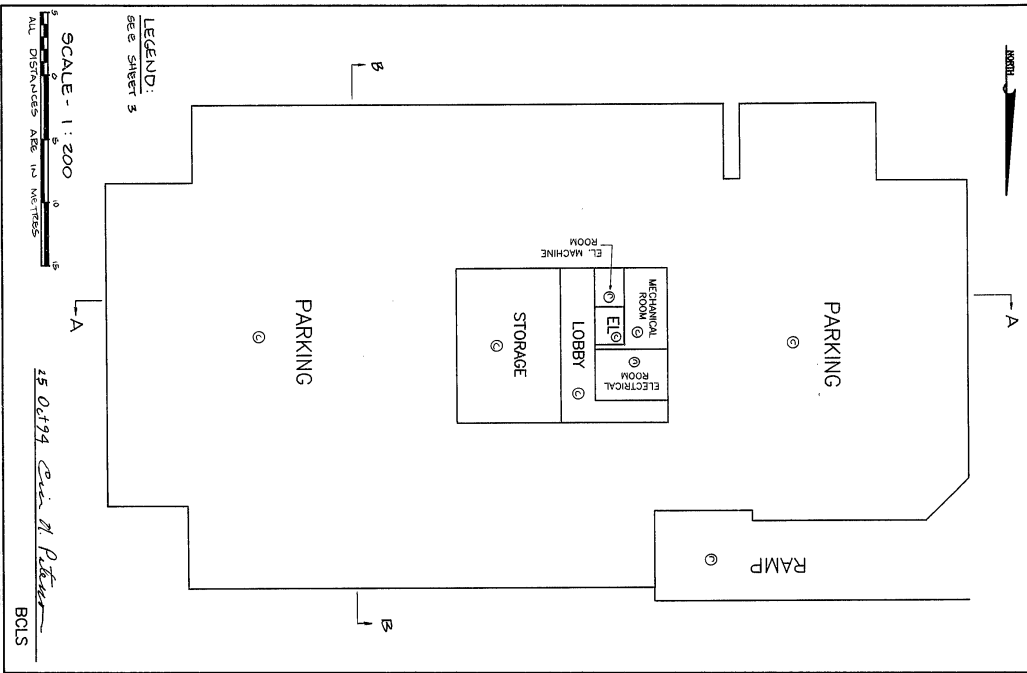
LEGEND:

- GRID BEARINGS ARE DERIVED FROM CONTROL MONUMENTS BY THE SURVEYOR AND ARE NOT TO BE USED FOR ANY OTHER PURPOSES
- THIS PLAN SHOWS THE CONVENTIONS OF THE CO-ORDINATES MULTIPLY BY COMBINED FACTOR 0.999999

25 Oct 94 Eric N. Peterson B.C.L.S.

PARKING FLOOR

STRATA PLAN LMS / 709



LEGEND:
SEE SHEET 3

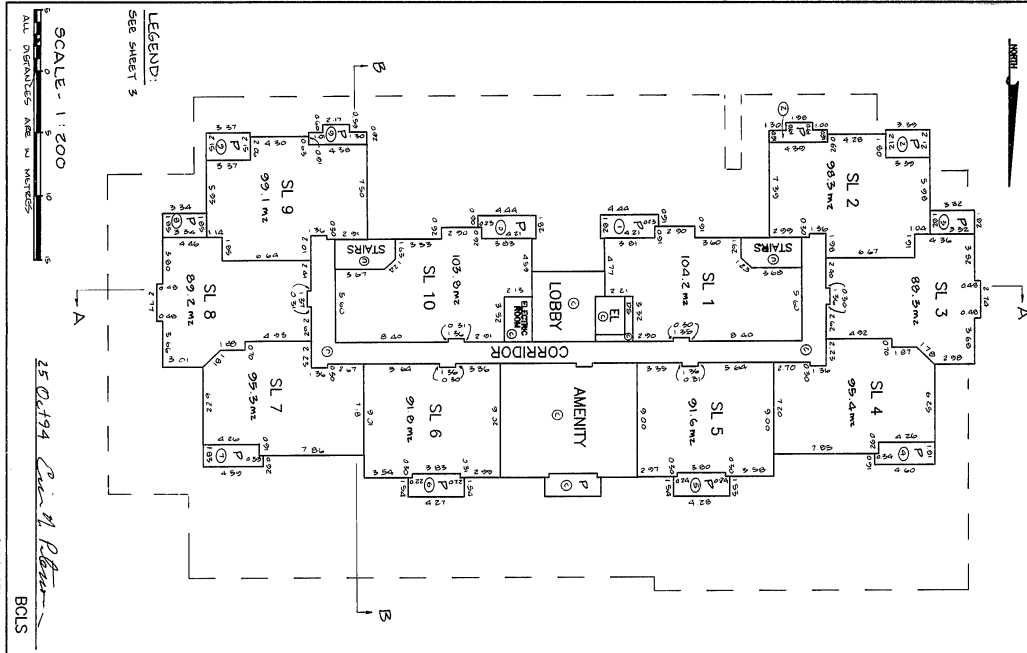
SCALE - 1:200
ALL DIMENSIONS ARE IN METERS

25.04.94 *Chris M. Patten*
BCIS

S194-239

FIRST FLOOR

STRATA PLAN LMS / 709



LEGEND:
SEE SHEET 3

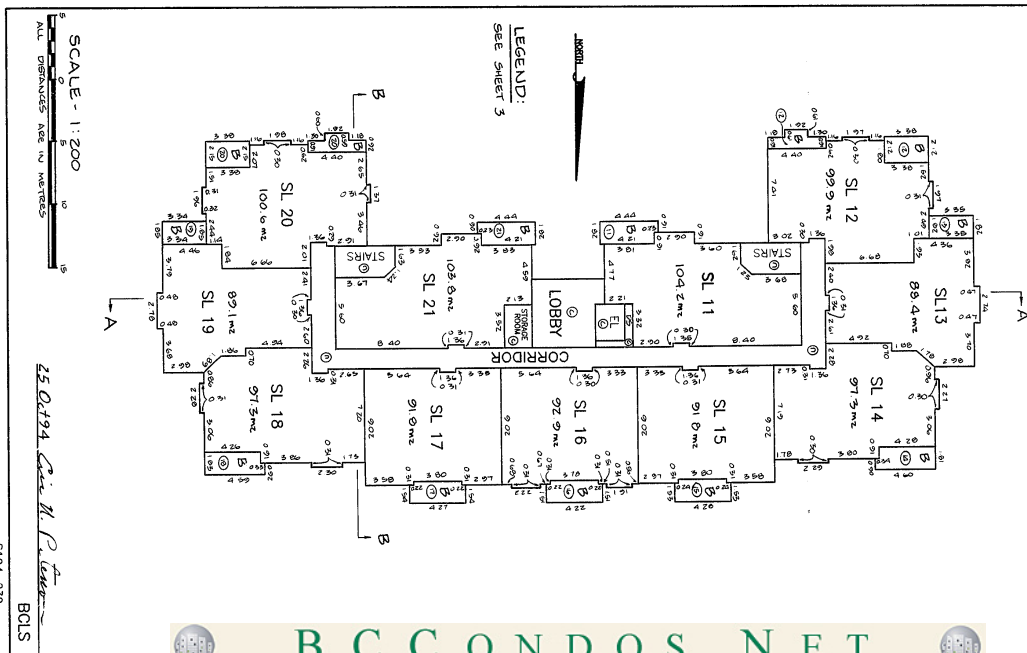
SCALE - 1:200
ALL DIMENSIONS ARE IN METERS

25.04.94 *Chris M. Patten*
BCIS

S194-239

SECOND FLOOR

STRATA PLAN LMS / 709



LEGEND:
SEE SHEET 3

SCALE - 1:200
ALL DIMENSIONS ARE IN METERS

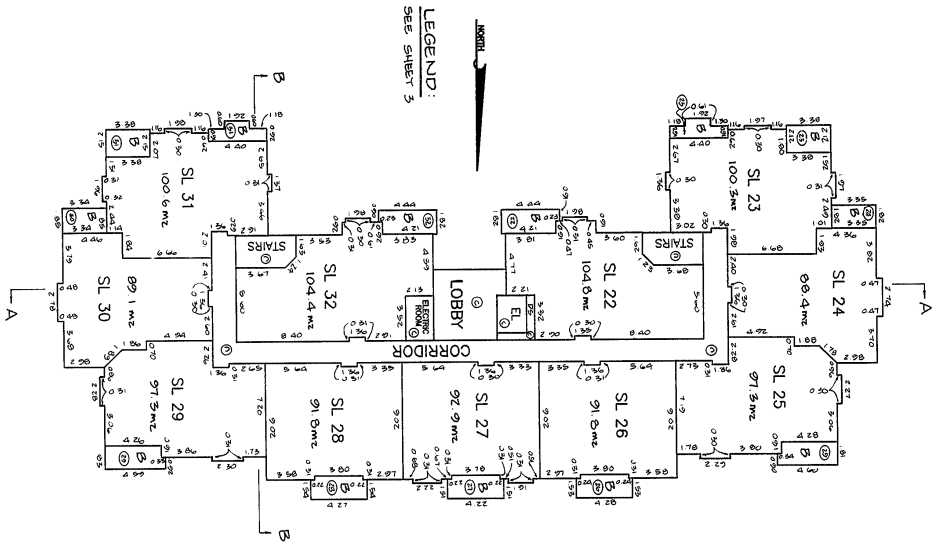
25.04.94 *Chris M. Patten*
BCIS

S194-239

SHEET 1 OF 11 SHEETS

THIRD FLOOR

STRATA PLAN LMS /709



SCALE - 1:200

ALL DIMENSIONS ARE IN METERS

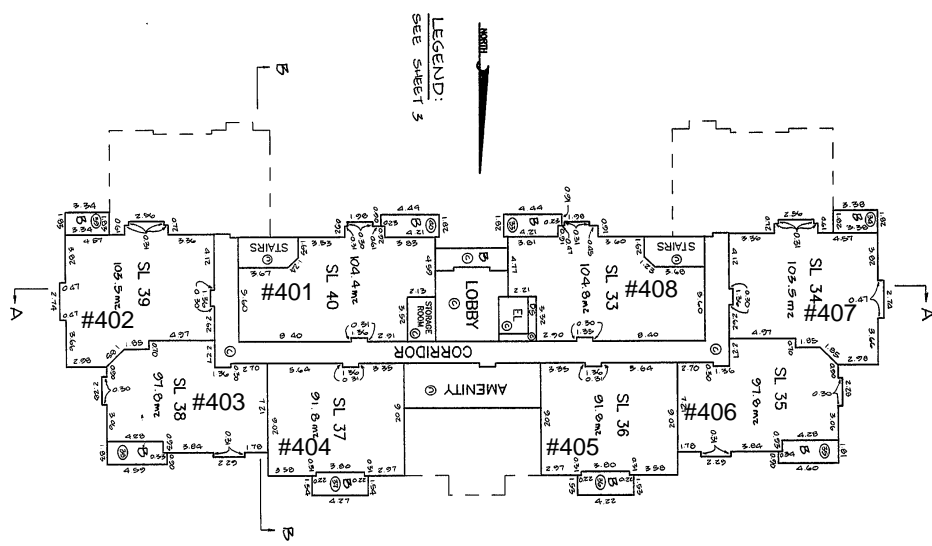
25 Oct 94 Carl N. P. BOLS

S194-239

SHEET 8 OF 11 SHEETS

FOURTH FLOOR

STRATA PLAN LMS /709



SCALE - 1:200

ALL DIMENSIONS ARE IN METERS

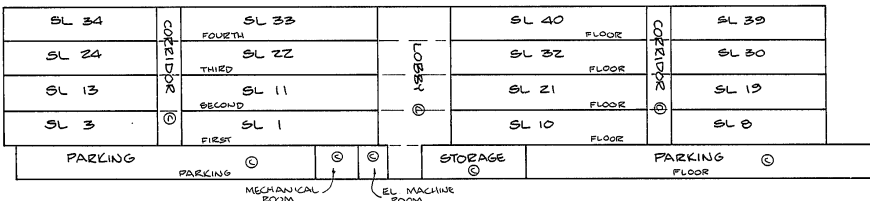
25 Oct 94 Carl N. P. BOLS

S194-239

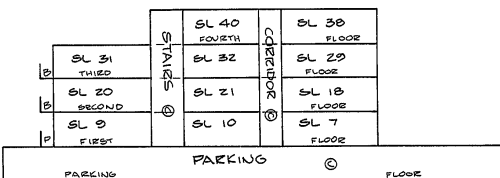
SHEET 9 OF 11 SHEETS

STRATA PLAN LMS /709

SECTION A



SECTION B



SCALE - 1:200

ALL DIMENSIONS ARE IN METERS

LEGEND: SEE SHEET 3

25 Oct 94 Carl N. P. BOLS

S194-239

