

33

AVANCOUVER ORIGINAL.

33 WEST PENDER

HOME

LOCATION

GALLERY

FEATURES

FLOORPLANS

TEAM



CROSTOWN,
VANCOUVER'S
FIRST
NEIGHBOURHOOD

[Tag Heuer Replica](#) [Houses for Rent and Sale](#) [Dubai Apartments](#)



33

AVANCOUVER ORIGINAL.

33 WEST PENDER

Interior
ExteriorHOME
LOCATION
GALLERY
FEATURES
FLOORPLANS
TEAM

FEATURES & AMMENITIES: EXTERIOR

KNOWN FOR CREATING AWARD-WINNING PROJECTS that leave lasting impressions, Acton Ostry Architects have been celebrated in the pages of Dwell, Azure and Canadian Architect Magazine. True to form, Acton Ostry's thoughtful design for 33 Pender shows a strong appreciation for the context, history and diversity of this remarkably unique location.

Clever details like staggered awnings, variegated brickwork and dramatic cutaways create the illusion of two distinct buildings: maintaining consistency with the area's typical street frontages and reinforcing the silhouette of the skyline. Bay windows and dramatic decks offer breathtaking views of the city and Burrard Inlet, while multihued glass adds depth and interest to 33's exterior, creating a tapestry symbolic of Chinatown's historic Silk Road.

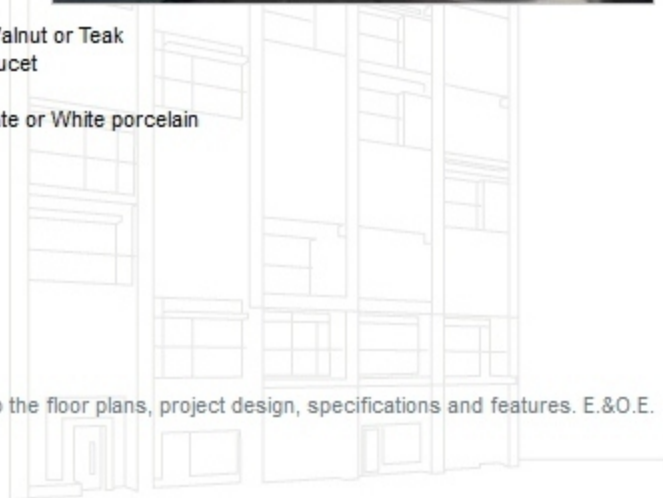
Spread across nine stories with four additional levels of secure underground parking, 33 is comprised of 63 distinctive homes - 54 flats, 9 penthouses including 3 two-tiered penthouse lofts - adding up to a stylish addition to Vancouver's oldest neighbourhood and an incredible place to live.



Bath

- Floating vanity with Customized flat panel, square-edge cabinetry in Flat Cut Walnut or Teak
- 'Cube Collection' Wet square wash basin with deck-mount polished chrome faucet
- Bathroom tile shower pan: 3/4" x 2" Black or 3/4" x 2" White porcelain tile
- 12" x 24" tile flooring and matching shower/tub surround in 'Mustang Black' Slate or White porcelain
- Hytec soaker tub with tiled side
- Sliding frosted glass bathroom door
- Separate frameless glass shower with rain shower head
- Satin chrome accessories
- 'Drake' two piece GL toilet, elongated bowl with softclose seat
- Polished chrome plumbing fixtures
- Recessed mirrored medicine cabinet

* The developer reserves the right to make changes and modifications to the floor plans, project design, specifications and features. E.&O.E.



33

AVANCOUVER ORIGINAL.

33 WEST PENDER

Interior
ExteriorHOME
LOCATION
GALLERY
FEATURES
FLOORPLANS
TEAM

FEATURES & AMMENITIES: INTERIOR

Walnut and Teak Style Schemes

Interior

- 12" x 24" Mustang Black slate or Cream porcelain flooring throughout
- Flat profile 5 ½" wood baseboards and coordinating 3 ½" door casings
- Recessed pot lighting in hallway and bathroom
- Ledge mounted up lights above the kitchen
- Brushed chrome door hardware
- 10 feet high ceilings
- Charcoal "Roll Ease" fabric window blinds throughout
- In-suite storage with additional above ceiling space
- CAT-5 wiring for high-speed internet (to be confirmed)
- Pure wool carpeting in bedrooms - 2 level penthouse only



Kitchen

- Customized flat panel, square-edge cabinetry in Flat Cut Walnut or Teak with recessed under-cabinet task lighting
- Anodized silver cabinet door and drawer pulls (lowers only)
- ¾" square edge stone kitchen countertops; honed granite in Absolute Black or dimastone slab in Stucco
- 1" x 1" prisma glass tile backsplash in 'Dust' colour
- Built-in Amana refrigerator with custom Walnut paneling to match the kitchen cabinetry
- Faber Agio integrated hood-fan with custom panels to match kitchen cabinetry
- Premium KitchenAid appliances:
- Built-in stainless steel wall oven
- Stainless steel four-burner gas cooktop
- Fully integrated 5 cycle dishwasher with custom panels to match kitchen cabinetry
- Danby Silhouette Stainless Steel Microwave
- Oversized undermount stainless steel sink with polished chrome faucet and extractable spray
- ½ hp in-sink disposal
- In-suite Whirlpool stacking 6 cycle washer and dryer



BC CONDOS.NET





AVANCOUVER ORIGINAL.

33 WEST PENDER

- HOME
- LOCATION
- GALLERY
- FEATURES
- FLOORPLANS**
- TEAM

FLOORPLANS

JR 1 BEDROOM

33 PLAN A

1 BEDROOM

33 PLAN B

33 PLAN C

33 PLAN D

33 PLAN E

33 PLAN F

33 PLAN G

1 BEDROOM + DEN

33 PLAN H

33 PLAN J

2 BEDROOM

33 PLAN I

33 PLAN K

33 PLAN L

33 PLAN M

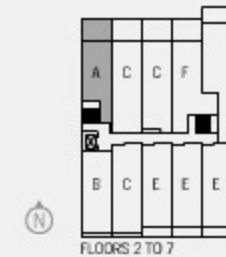


SPECIFICATIONS

SUITES 201 TO 701
525 TO 619 SQ FT

- * Balcony shown on floors 4 + 6 only
- * Balcony shown is enclosed on floors 5 + 7
- * Balcony on 201 is approximately 144 sq ft
- * Balcony on 301 is approximately 28 sq ft

printable pdf



33 AVANCOUVER ORIGINAL.

33 WEST PENDER

- HOME
- LOCATION
- GALLERY
- FEATURES
- FLOORPLANS
- TEAM

TEAM

Georgia Laine Developments

Robert Wilson, President of Georgia Laine Developments has been involved in residential development for over 10 years. During this time Robert has constantly had a vision for the Gastown, Yaletown and Crosstown neighbourhoods. His most recent development, THE HUB, sold out.

Robert is currently working on properties in North Vancouver, Port Moody, West Broadway, and Main Street which are in different stages of predevelopment. Robert's philosophy is to have people living in smaller projects, i.e. 24 to 70 units. Owners living in the buildings where they will commune with each other, in work, entertainment, family etc., creating a village like atmosphere.

RE/Max Ken Leong

www.kenleong.com

Acton Ostry Architects

www.actonostry.ca

Acton Ostry Architects Inc was established in 1993 and is recognized as one of Canada's leading design firms, with a reputation for design excellence and award winning projects.

Significant local and national awards include five Lieutenant Governor Awards, four Canadian Architect Awards of Excellence, three Canadian and American Wood Council Awards, including the prestigious Ron Thom Award, and a first annual national Outside the Box Award, for exceptional and innovative architecture and design.

Chaston Construction

www.chastonconstruction.com

Chaston Construction Corporation has been managing for 20 years in the Lower Mainland and Whistler area. Notable projects include the Brewhouse in Whistler, renovations to the Chateau Whistler Hotel and many of the finest restaurants in the region including West, Blue Water Cafe, Le Crocodile, Hy's Whistler, and Yaletown Brewing Company. We are known for delivering high end, difficult projects with outstanding quality, while carrying out the business practices with the highest level of integrity.

Lucid Design

www.lucidinteriors.com

Jen Gannon and Charyle Ross-Forai have been designing together in British Columbia and Alberta for over five years. Since forming Lucid Design, they have specialized in multi family and high end residential, working with some of the premier developers in Vancouver, Calgary and Edmonton. Some of the multi-family projects they have worked on are "HUB" by Georgia Laine Developments, "Symphony" by The Holborn Group and various other projects for developers such as Heartland and Hawthorne Homes in Calgary and Reifel Cook Group in Vancouver. Some of the private residential projects have been in buildings such as "Domus" and "Shaw Tower". Their aim is to design spaces that are comfortable, functional and in keeping with the latest design trends.