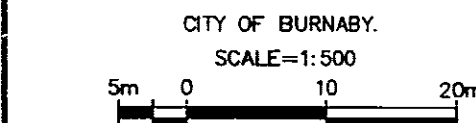


STRATA PLAN OF LOT 1, BLOCK 36, D.L. 34, GP. 1, N.W.D., PLAN LMP 12580.

FIRST SHEET, SHEET 1 OF 10 SHEETS STRATA PLAN LMS. 1575

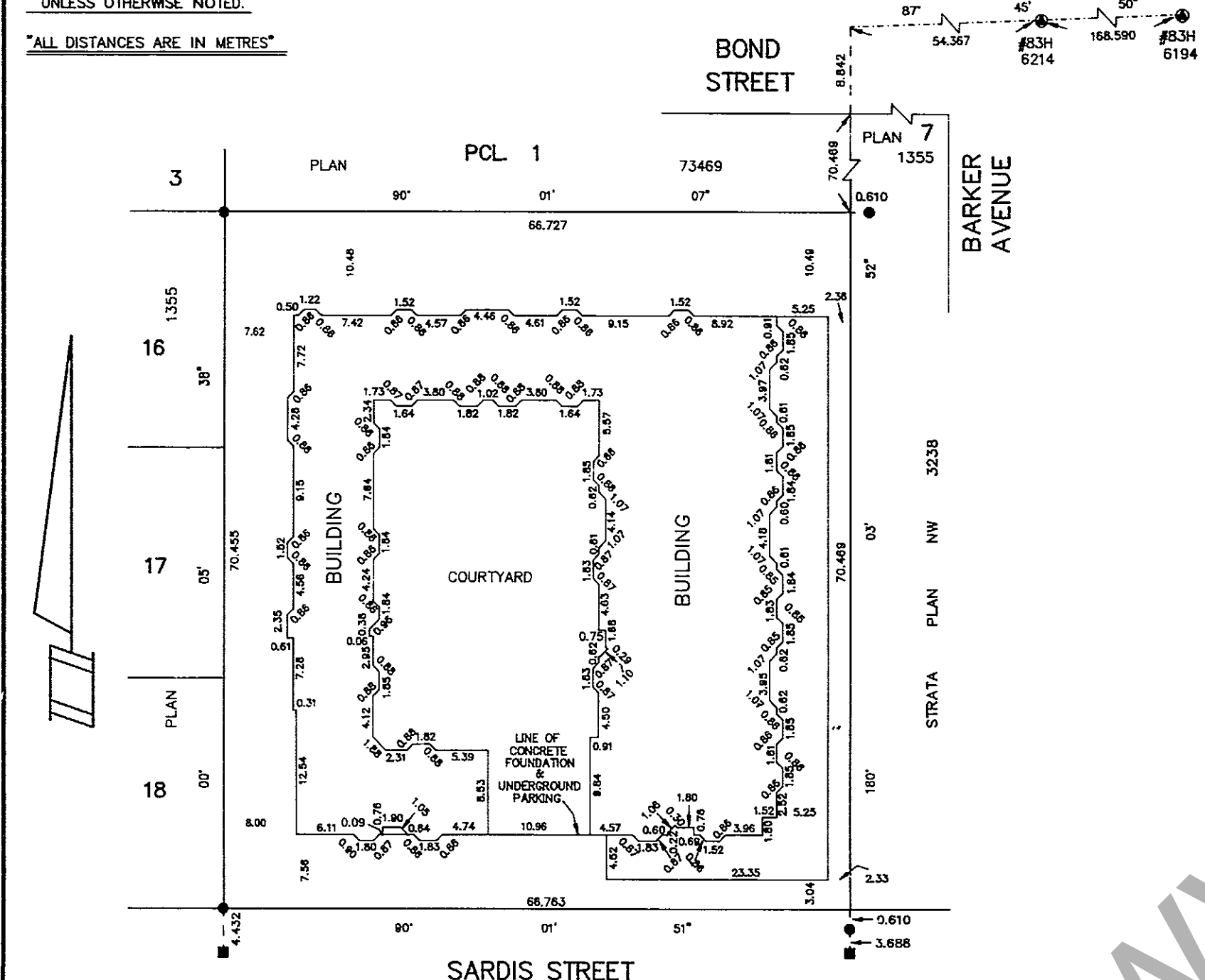
10-301



CIVIC ADDRESS: "SARDIS COURT" #4155 SARDIS STREET, BURNABY, B.C. THE ADDRESS FOR SERVICE OF DOCUMENTS OF STRATA CORPORATION IS: THE OWNERS STRATA PLAN LMS. 1575 C/O 7857 SIXTH STREET BURNABY, B.C. V3N 3N4

LEGEND: SL INDICATES STRATA LOT. m2 INDICATES SQUARE METRES. CP INDICATES COMMON PROPERTY. PT. INDICATES PART OF. P INDICATES PATIO. B INDICATES BALCONY. LC INDICATES LIMITED COMMON PROPERTY. (APPURTENANT TO STRATA LOT WHICH FOLLOWS) FP INDICATES FIREPLACE. ● IRON POST FOUND. ■ LEAD PLUG FOUND. ● CONTROL MONUMENT FOUND.

"ALL ANGLES ARE 90° OR 45° UNLESS OTHERWISE NOTED." "ALL DISTANCES ARE IN METRES"



J. W.G. LAMMERTS, OF SURREY, B.C., A BRITISH COLUMBIA LAND SURVEYOR, HEREBY CERTIFY THAT THE BUILDING ERECTED ON THE PARCEL DESCRIBED ABOVE IS WHOLLY WITHIN THE EXTERNAL BOUNDARIES OF THAT PARCEL.

LAMMERTS LAND SURVEYING LTD. 14649-108th AVE. SURREY, B.C. 584-6825

"THIS PLAN LIES WITHIN THE GREATER VANCOUVER REGIONAL DISTRICT."

W. Lammer DATED AT SURREY, B.C. THIS 15th DAY OF August, 1994. 92219

SECOND SHEET, SHEET 2 OF 10 SHEETS STRATA PLAN LMS. 1575

CONDOMINIUM ACT.

Table with 3 columns: LOT NUMBER, SHEET NUMBER, and three columns for SCHEDULE OF UNIT ENTITLEMENT, SCHEDULE OF INTEREST UPON DESTRUCTION, and SCHEDULE OF VOTING RIGHTS. Rows 1-40 and AGGREGATE.

ACCEPTED AS TO FORMS 1, 2 AND 3 THIS 15th DAY OF August, 1994. Superintendent of Real Estate signature and date August 15, 1994. 92219

SECOND SHEET, SHEET 3 OF 10 SHEETS STRATA PLAN LMS. 1575

CONDOMINIUM ACT.

STATUTORY DECLARATION

- (1) I, THE UNDERSIGNED AM THE DULY AUTHORIZED AGENT OF THE OWNER-DEVELOPER. (2) THE STRATA PLAN IS ENTIRELY FOR RESIDENTIAL USE.

I MAKE THIS SOLEMN DECLARATION CONSCIENTIOUSLY BELIEVING IT TO BE TRUE AND KNOWING THAT IT IS OF THE SAME FORCE AND EFFECT AS IF MADE UNDER OATH.

Signature of Nicholas Hoxer, BRITISH COLUMBIA, THIS 16th DAY OF August, 1994.

FORM 13 NEW DEVELOPMENT CERTIFICATE [SECTION 8 (1)]

I, W.G. LAMMERTS, A BRITISH COLUMBIA LAND SURVEYOR, HEREBY CERTIFY THAT THE BUILDING SHOWN IN THIS STRATA PLAN HAS NOT AS OF THIS 15th DAY OF August, 1994, BEEN PREVIOUSLY OCCUPIED DATED AT SURREY, BRITISH COLUMBIA, THIS 15th DAY OF August, 1994.

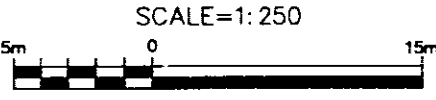
Signature of W.G. Lammerts, B.C.L.S.

Signature of Notary Public DONALD D. McLELLAN, A COMMISSIONER FOR TAKING AFFIDAVITS WITHIN BRITISH COLUMBIA.

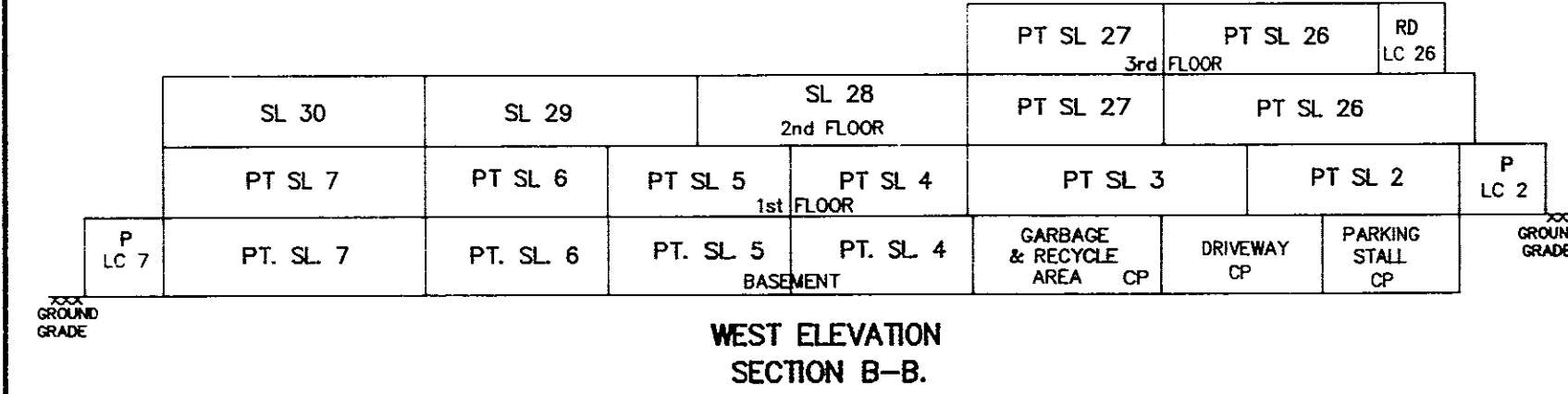
Table with two columns: OWNERS and MORTGAGEES. Includes SARDIS DEVELOPMENT LTD. and BANK OF MONTREAL.

August 15, 1994. W.G.L. 92219

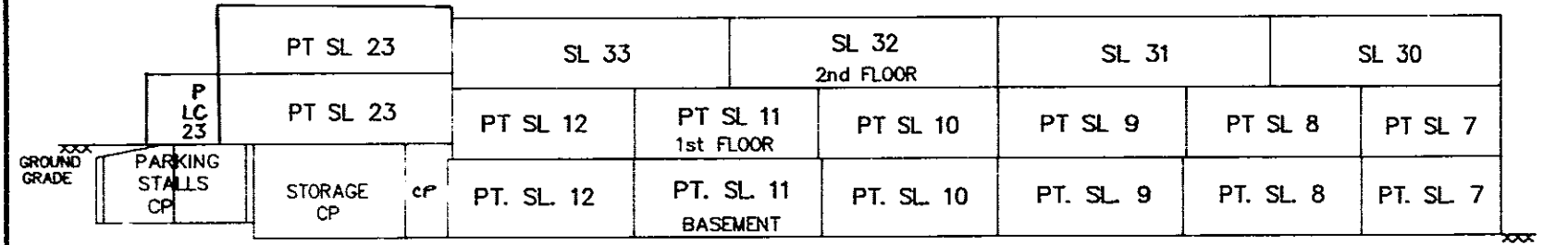
TYPICAL SECTIONS.



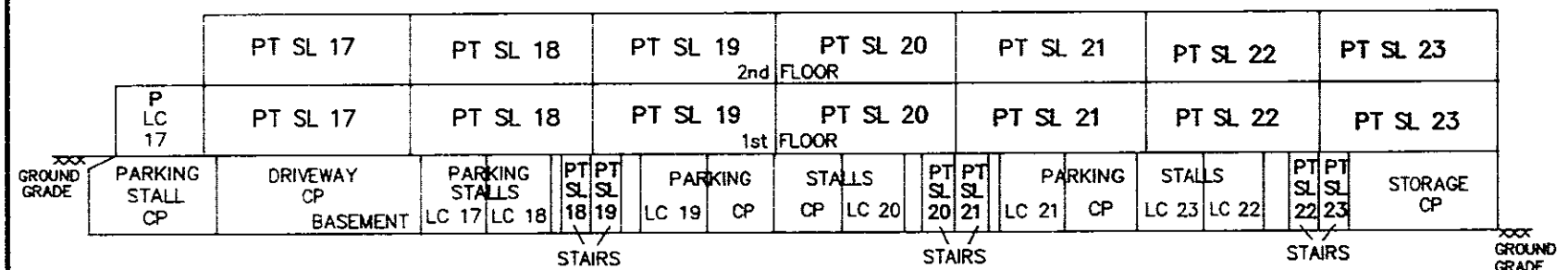
SHEET 4 OF 10 SHEETS STRATA PLAN LMS. 1575



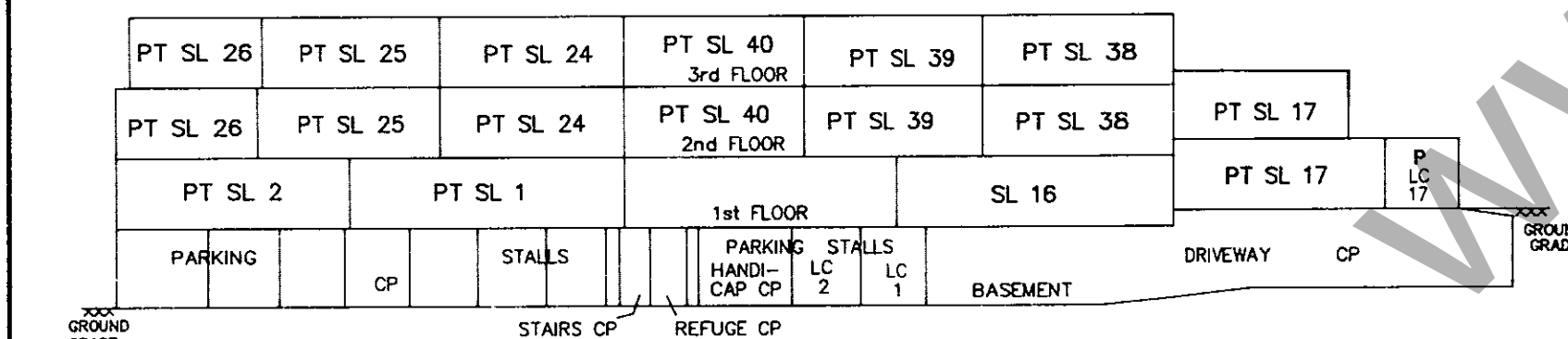
WEST ELEVATION SECTION B-B.



NORTH ELEVATION SECTION A-A



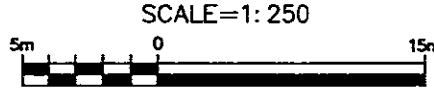
EAST ELEVATION SECTION D-D



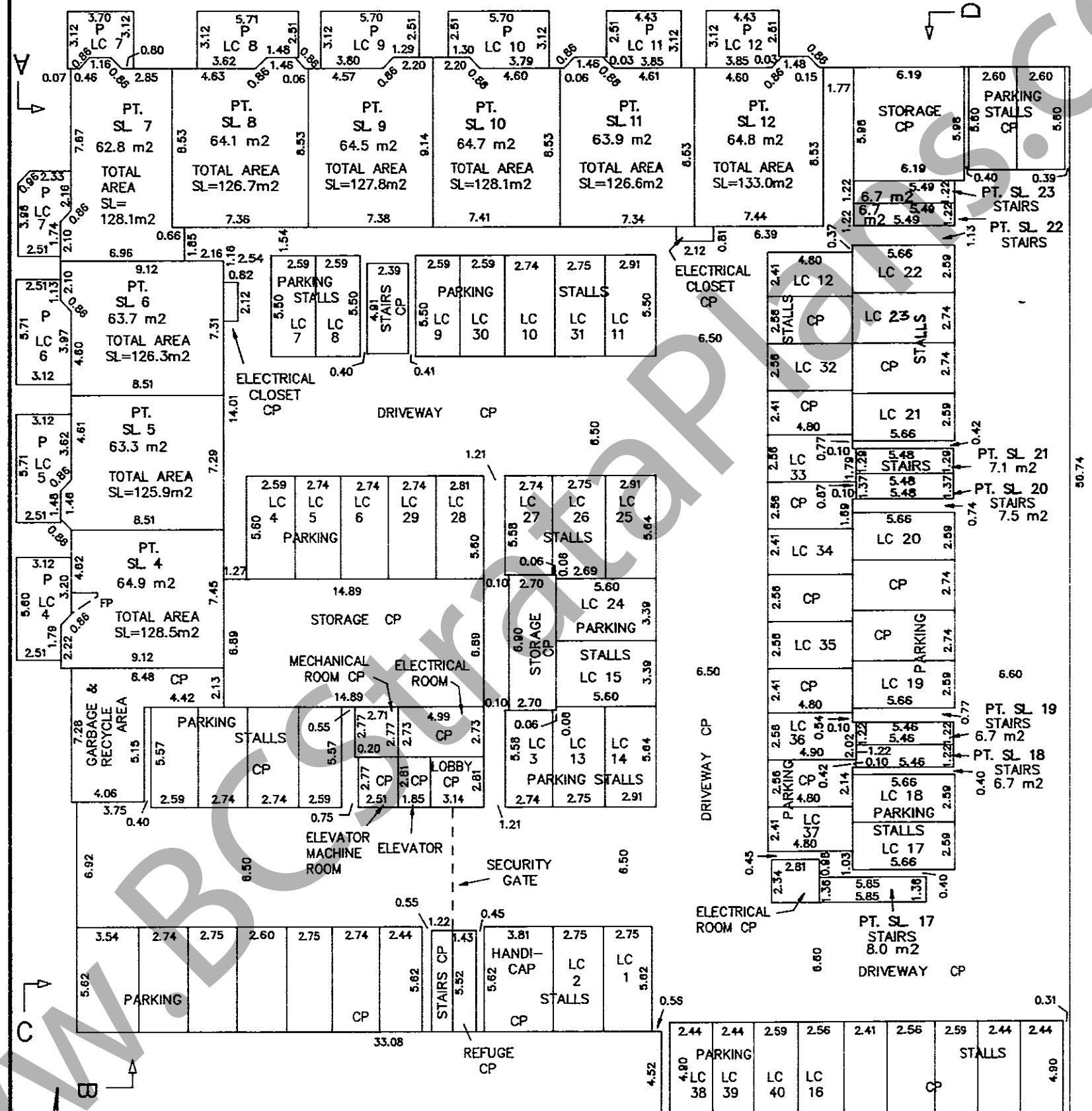
SOUTH ELEVATION SECTION C-C SARDIS STREET

August 15, 1994 W.G.L.

BASEMENT PART OF STRATA LOTS 4 TO 12 AND 17 TO 23 INCLUSIVE.

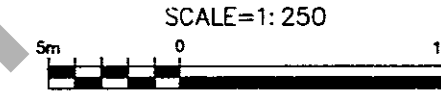


SHEET 5 OF 10 SHEETS STRATA PLAN LMS. 1575

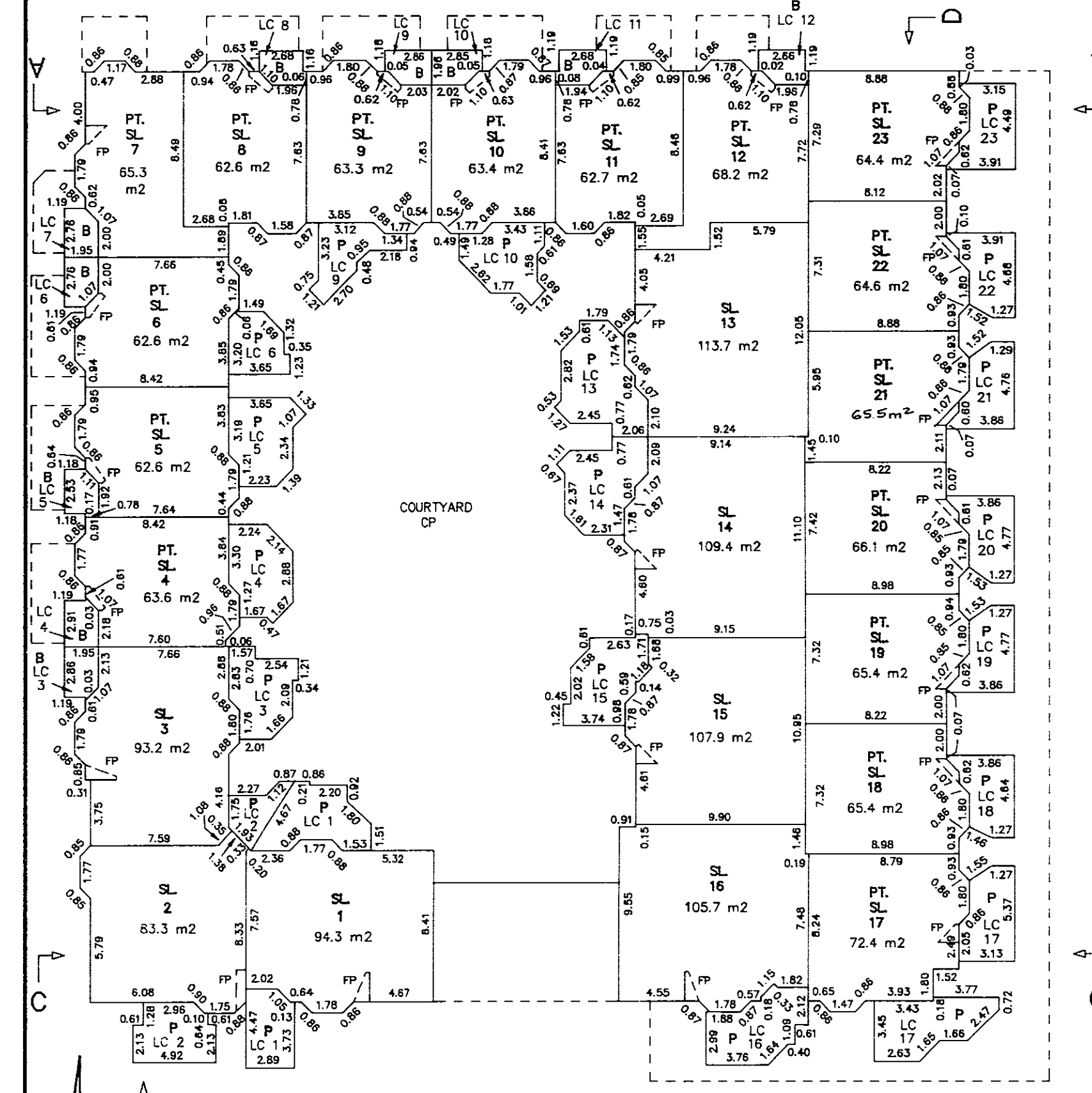


15th August 1994 W.G.L.

FIRST FLOOR STRATA LOTS 1,2,3,13,14,15 AND 16, AND PART OF STRATA LOTS 4 TO 12 AND 17 TO 23 INCLUSIVE.



SHEET 6 OF 10 SHEETS STRATA PLAN LMS. 1575

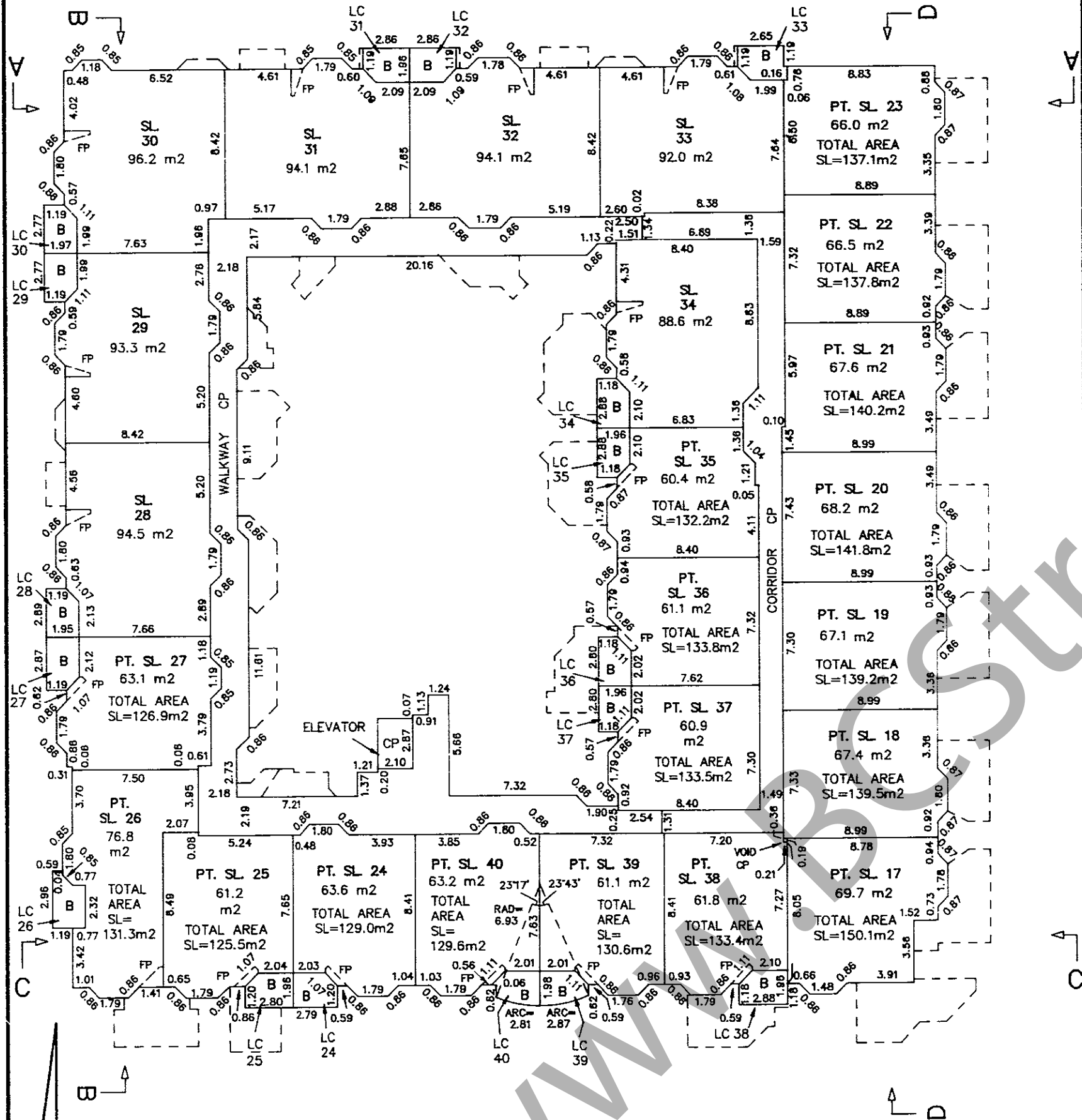
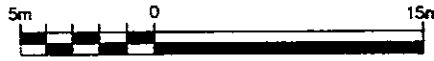


August 15, 1994 W.G.L.

1575

SECOND FLOOR.
STRATA LOTS 28 TO 34 INCLUSIVE,
AND PART OF STRATA LOTS 17 TO 27
AND 35 TO 40 INCLUSIVE.

SCALE=1:250

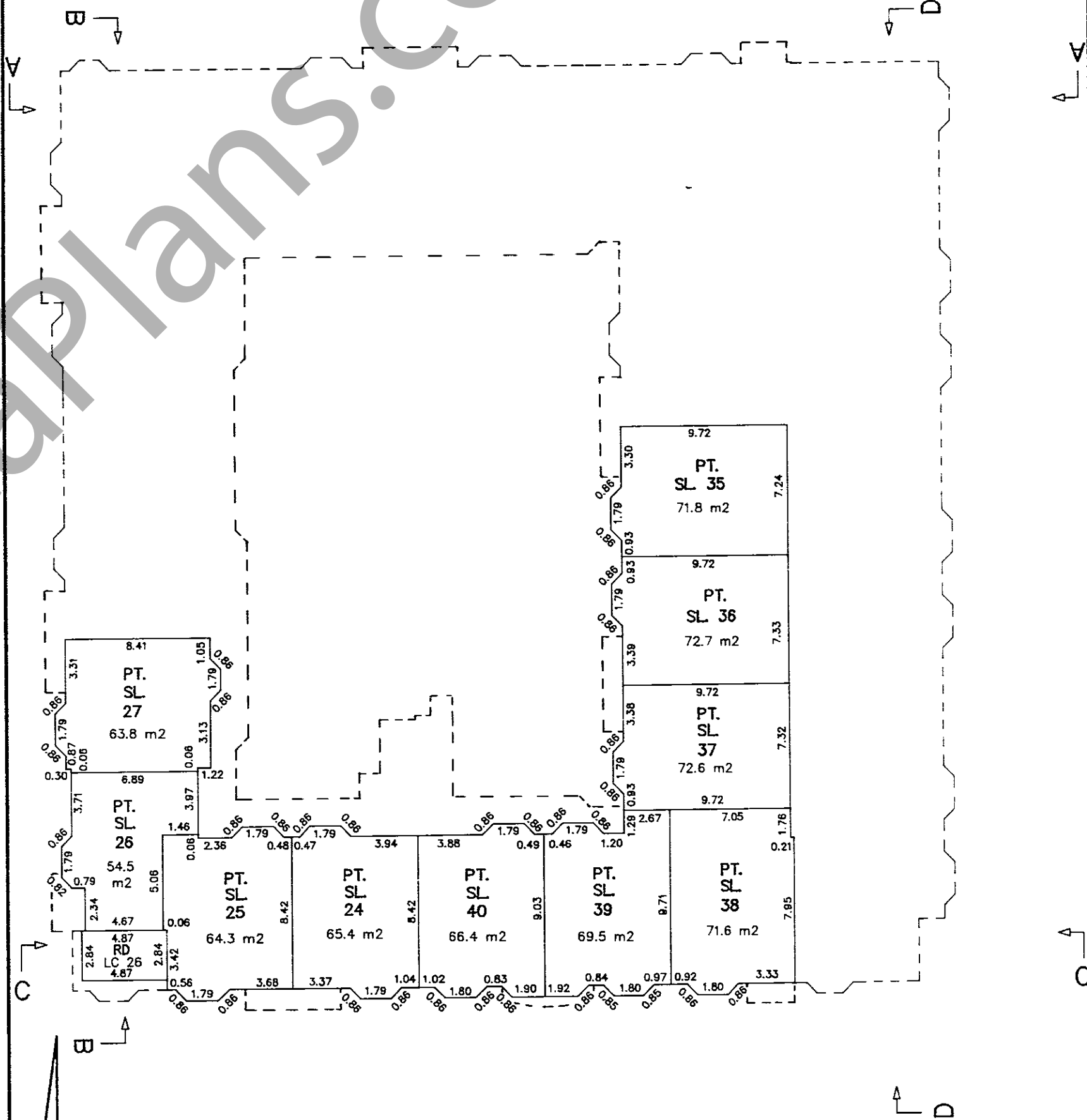


August 15, 1994
M.G.P.
92219

1575

THIRD FLOOR.
PART OF STRATA LOTS 24 TO 27
AND 35 TO 40 INCLUSIVE.

SCALE=1:250



August 15, 1994
M.G.P.
92219

