

**STRATA PLAN OF LOT 2,  
SECTION 36, TOWNSHIP 8,  
N.W.D., PLAN BCP 11132**

Sheet 1 of 18 Sheets  
**STRATA PLAN BCS 1216**

5 0 5 10 15

GRAPHIC SCALE - METRES 1:1000

All distances are in metres

Municipality of Langley BCGS 92G.017

Deposited and Registered in the Land Title  
Office at New Westminster, B.C. this  
23 day of March, 2005.

I. MacDonald / as  
Deputy Registrar

BX 123388 - BX 123442

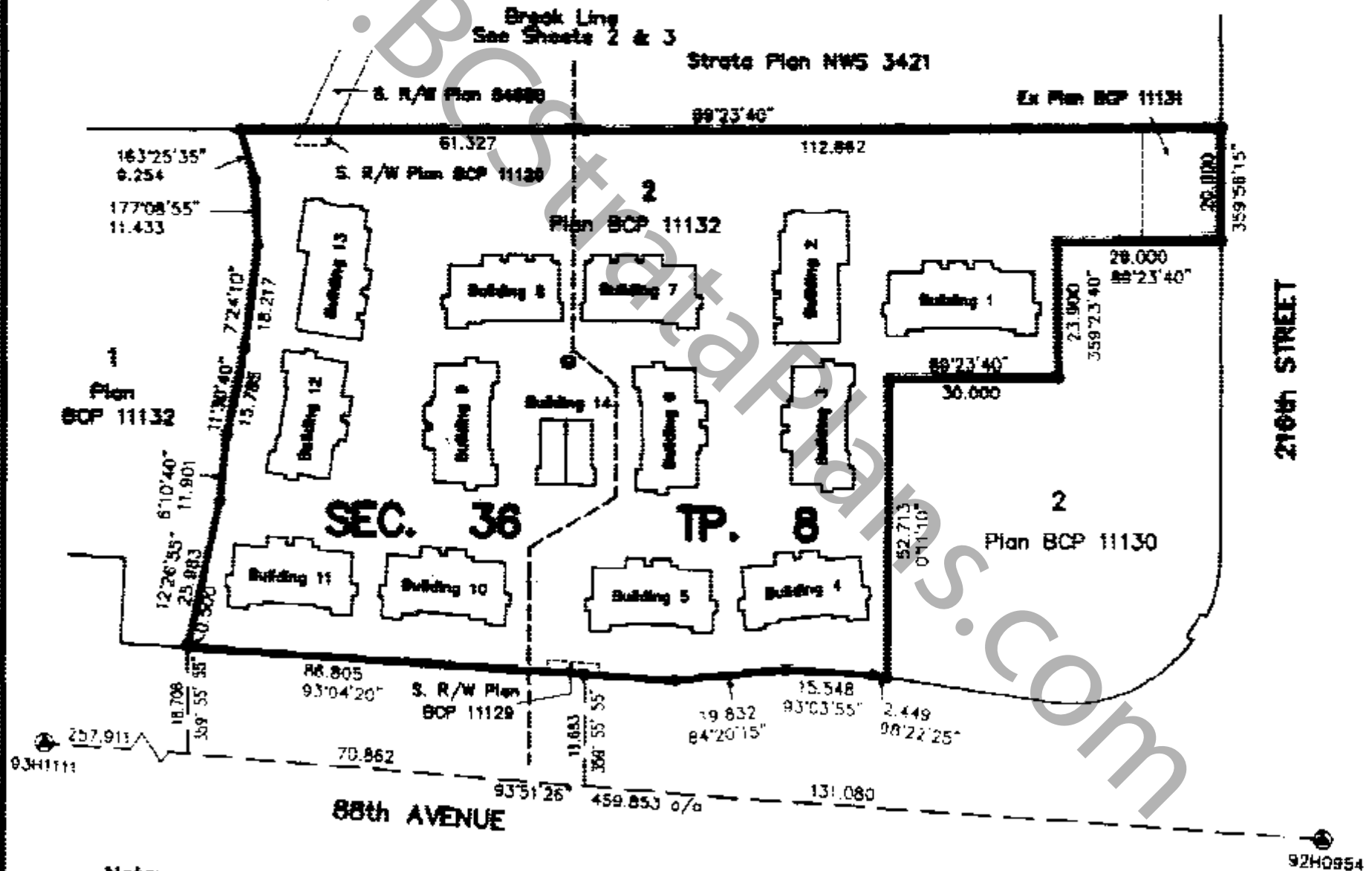
Integrated Survey Area No. 41, Langley, B.C.  
Grid bearings are derived from observations  
between Control Monuments 92H0954 and 93H1111  
NAD 83 (CSRS)

This Plan shows ground level measured  
distances. Prior to computation of U.T.M.  
coordinates, multiply by combined factor  
0.9996031

**Legend:**

- Denotes control monument found
- Denotes iron post found
- SL Denotes strata lot
- ⊙ Denotes common property
- m<sup>2</sup> Denotes square metres
- LCP Denotes limited common property
- D-1 Denotes deck SL 1 (typical)
- P-1 Denotes patio SL 1 (typical)
- R-1 Denotes porch SL 1 (typical)

Civic Address:  
"Redwood Lane"  
21535 - 88th Avenue  
Langley, BC



**Note:**  
Strata Lot dimensions are to the  
outside of sheeting on exterior  
walls and to the centerline of  
interior walls.

I, J.G. Cameron, a British Columbia Land Surveyor of Surrey,  
in British Columbia certify that I was present at and personally  
superintended the survey represented by this plan, and that  
the survey and plan are correct. The field survey was  
completed on the 16th day of March, 2005.  
The plan was completed and checked, and the checklist filed  
under # 28743, on the 18th day of March, 2005.

Cameron Land Surveying Ltd.  
B.C. Land Surveyors  
Unit 203-6333-148th St.  
Surrey, B.C. V3S 3C3  
Phone: 597-3777  
Fax: 597-3783

This plan lies within the Greater  
Vancouver Regional District.

J.G. Cameron  
J.G. Cameron, B.C.L.S.

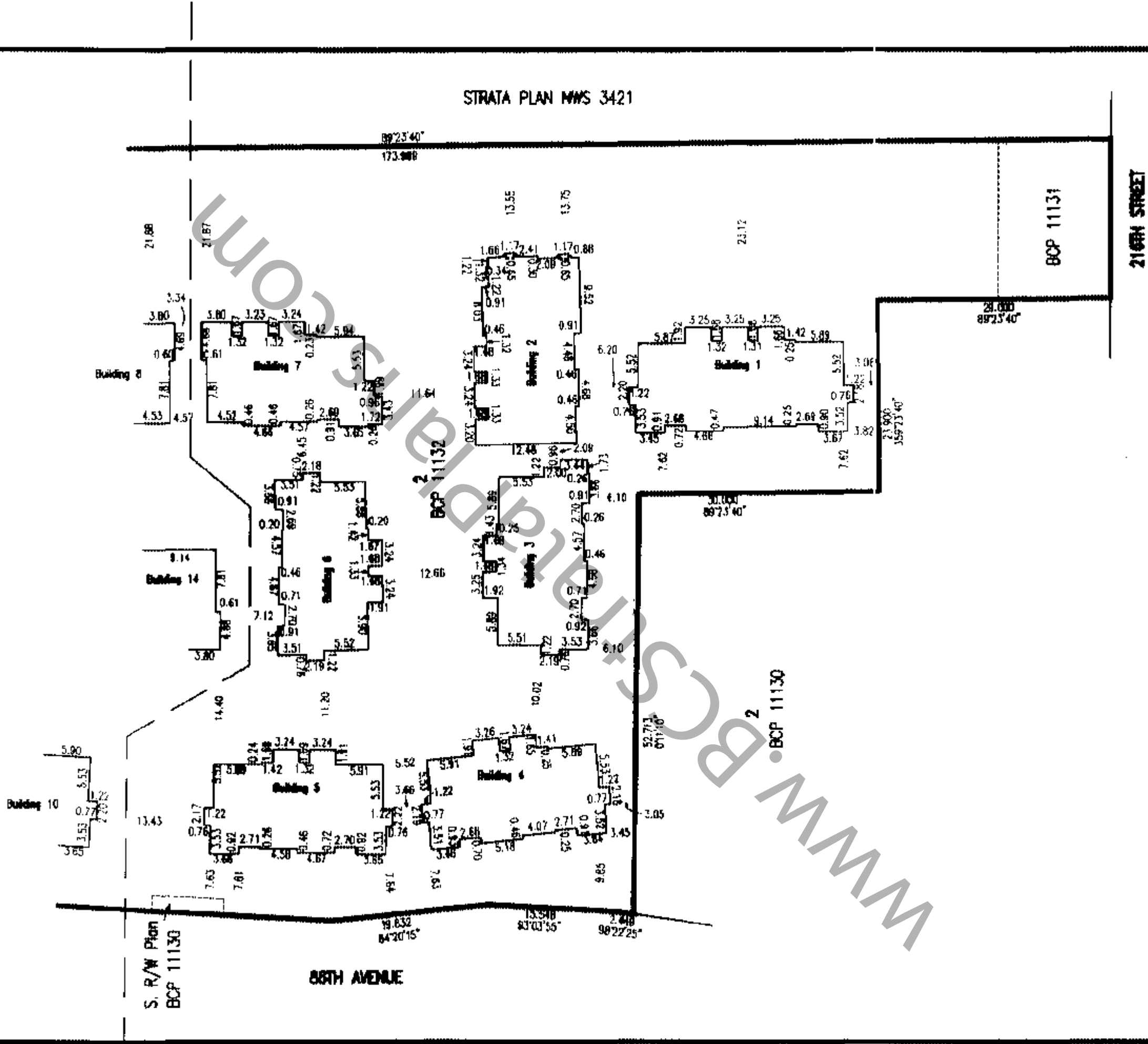
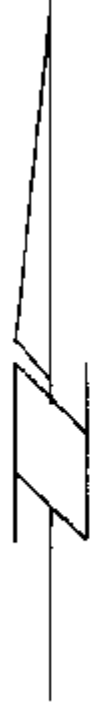
File: A-3744-S1

STRATA PROPERTY ACT

Sheet 2 of 18 Sheets  
STRATA PLAN BCS 1216



GRAPHIC SCALE - METRES 1:500  
All distances are in metres



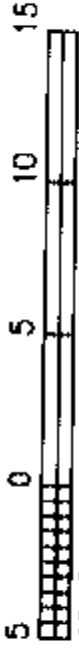
Cameron Land Surveying Ltd.  
B.C. Land Surveyors  
Unit 203-6333-148th St.  
Surrey, B.C. V3S 3C3  
Phone: 597-3777  
Fax: 597-3783

Dated this 18th day of March, 2005.

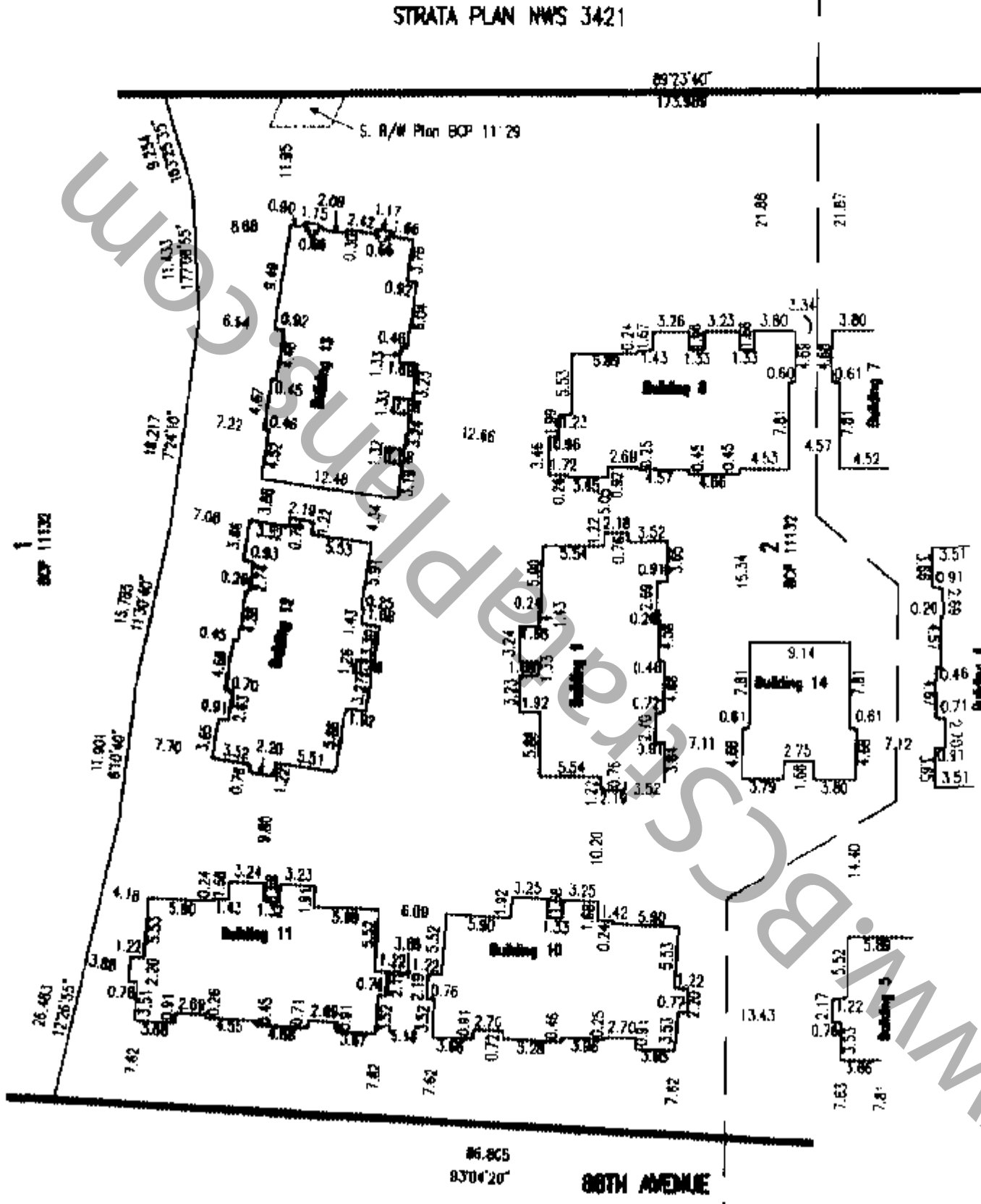
*[Signature]*  
File: A-3744-S2  
B.C.L.S.

STRATA PROPERTY ACT

Sheet 3 of 18 Sheets  
STRATA PLAN BCS 1216



GRAPHIC SCALE - METRES 1:500  
All distances are in metres



STRATA PLAN NWS 3421

Cameron Land Surveying Ltd.  
B.C. Land Surveyors  
Unit 203-6333-148th St.  
Surrey, B.C. V3S 3G3  
Phone: 597-3777  
Fax: 597-3783

Dated this 18th day of March, 2005.

*[Signature]*  
File: A-3744-S3

STRATA PROPERTY ACT

Sheet 4 of 18 Sheets  
STRATA PLAN BCS 1216

The Corporation of the Township of Langley, registered  
owner of certificate #W2025874 & strata plan #70,  
herby consents to the deposit of this plan.

Eric Britton  
Clerk

Eric Britton  
Witness 4914-221 Street  
Langley, B.C. V3A 3L8

Owners: MACLEAN HOMES (REDWOOD LANE) LTD  
INC # 682372

[Signature] SPANISH MACLEAN  
Authorized Signatory (sign & print name clearly)

Authorized Signatory (sign & print name clearly)

[Signature] MARGARET KUBACKI  
Witness (sign & print name clearly)

[Signature] WENDY HAYN RD.  
Address of Witness

MARGARET KUBACKI  
Occupation of Witness

Mortgages: HSBC BANK OF CANADA

[Signature] P. M. STEINER  
Authorized Signatory (sign & print name clearly)

[Signature] VIVIANE PEGGILLO  
Witness

Authorized Signatory (sign & print name clearly)

[Signature] GREGGIAN FRATZ  
Witness (sign & print name clearly)

800 W. CAROLINA ST, VANCOUVER  
Address of Witness

BRANVA  
Occupation of Witness

Cameron Land Surveying Ltd.  
B.C. Land Surveyors  
Unit 203-6333-148th St.  
Surrey, B.C. V3S 3C3  
Phone: 597-3777  
Fax: 597-3783

I, J.G. Cameron, a British Columbia Land Surveyor,  
certify that the buildings shown on this strata plan  
are within the external boundaries of the land that  
is the subject of the strata plan.

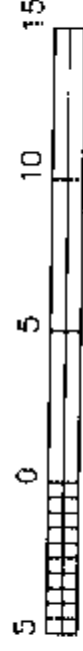
Date: March 18th, 2005  
\_\_\_\_\_, B.C.L.S.

I, J.G. Cameron, a British Columbia Land Surveyor,  
certify that the buildings included in this strata  
have not, as of March 18th, 2005  
been previously occupied.

[Signature], B.C.L.S.

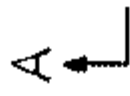
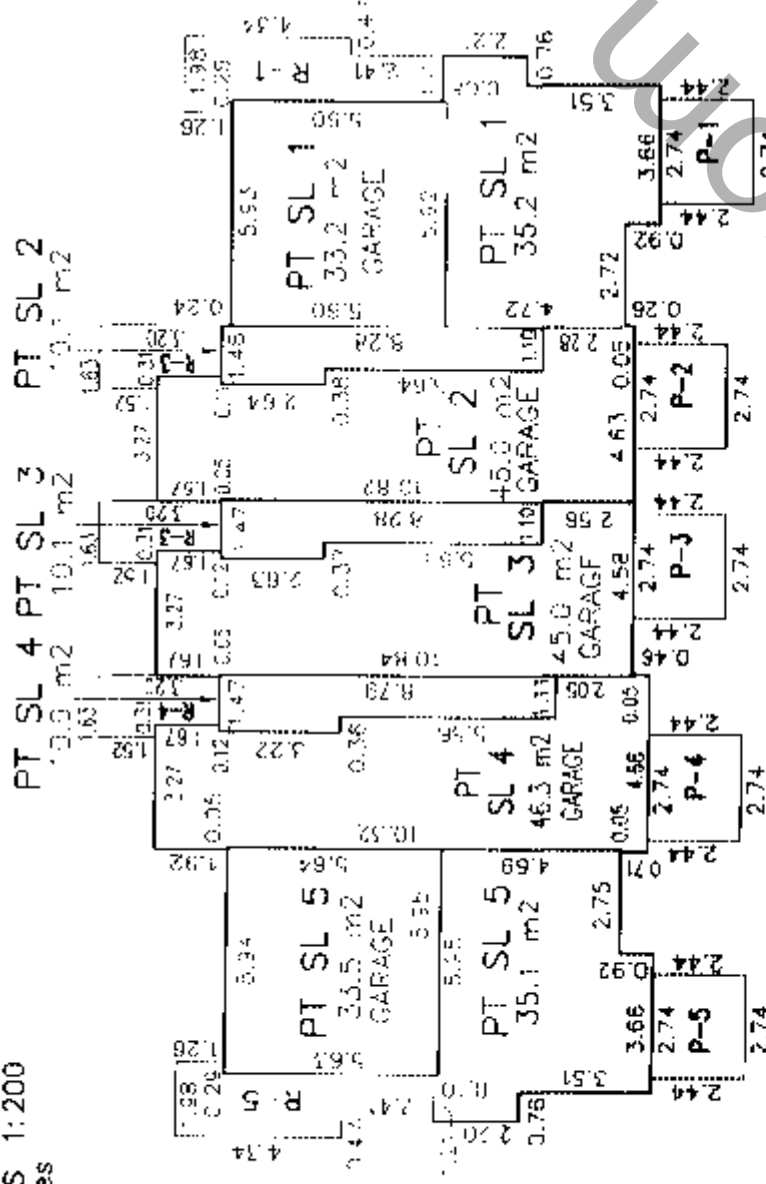
**FLOOR PLANS & SECTION  
BUILDING 1**

Sheet 5 of 17 Sheets  
**STRATA PLAN BCS 1216**

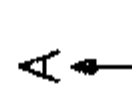
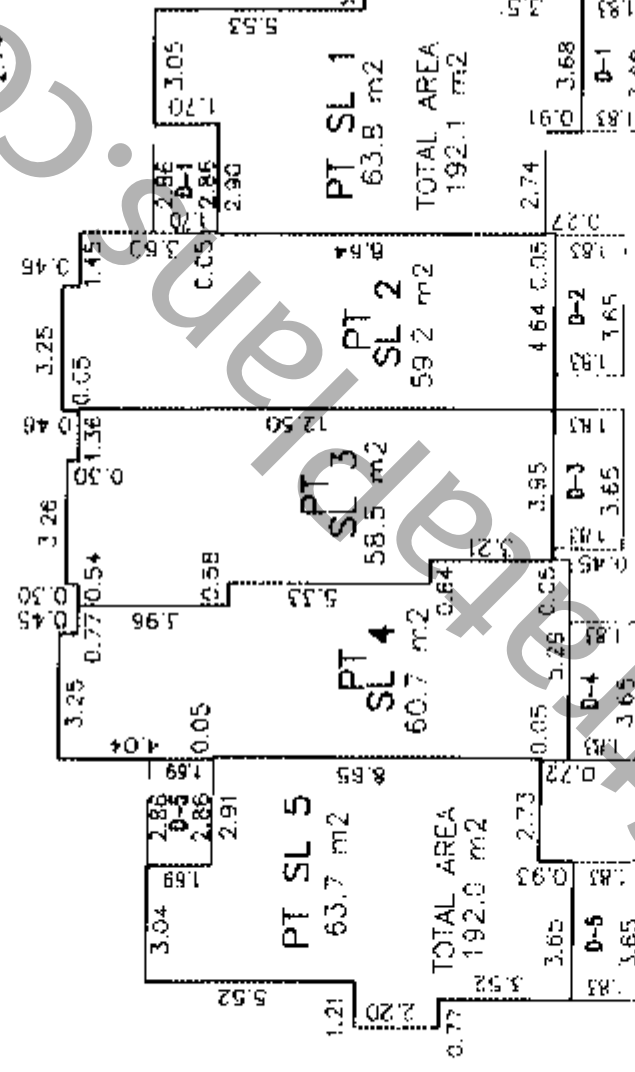


GRAPHIC SCALE - METRES 1:200  
All distances are in metres

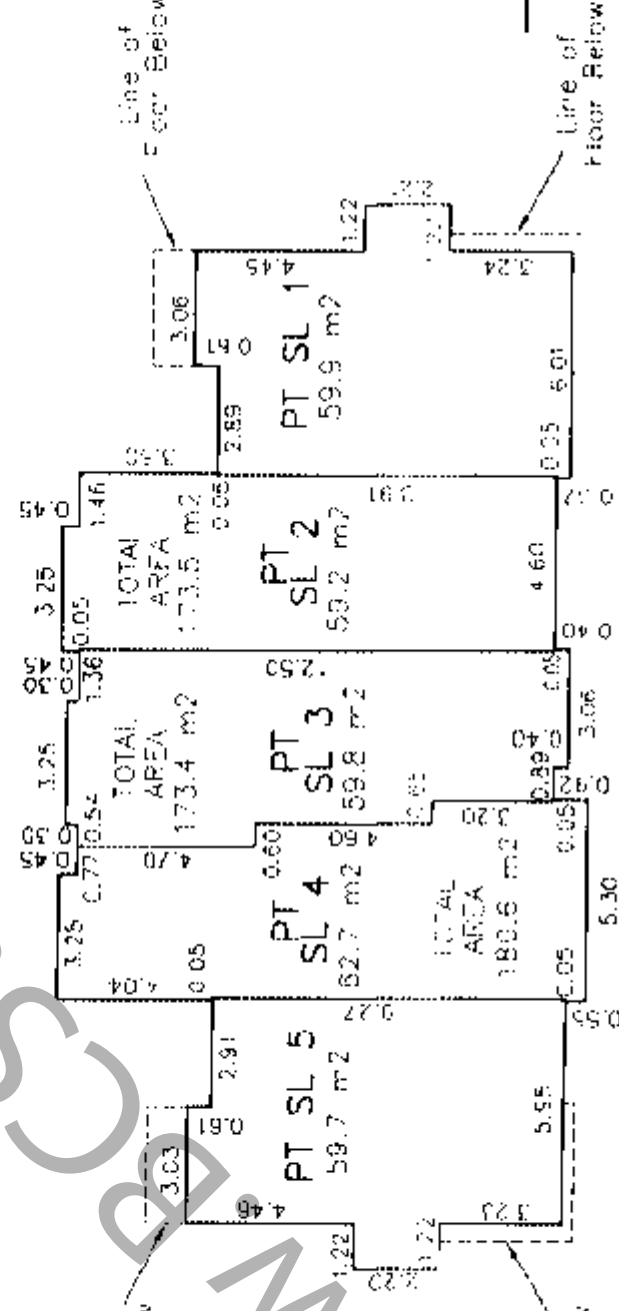
**LOWER FLOOR**



**MAIN FLOOR**



**UPPER FLOOR**



<b>UPPER</b>	PT SL 5	PT SL 4	PT SL 3	PT SL 2	PT SL 1
<b>MAIN</b>	PT SL 5	PT SL 4	PT SL 3	PT SL 2	PT SL 1
<b>LOWER</b>	PT SL 5	PT SL 4	PT SL 3	PT SL 2	PT SL 1

**SECTION A - A'**

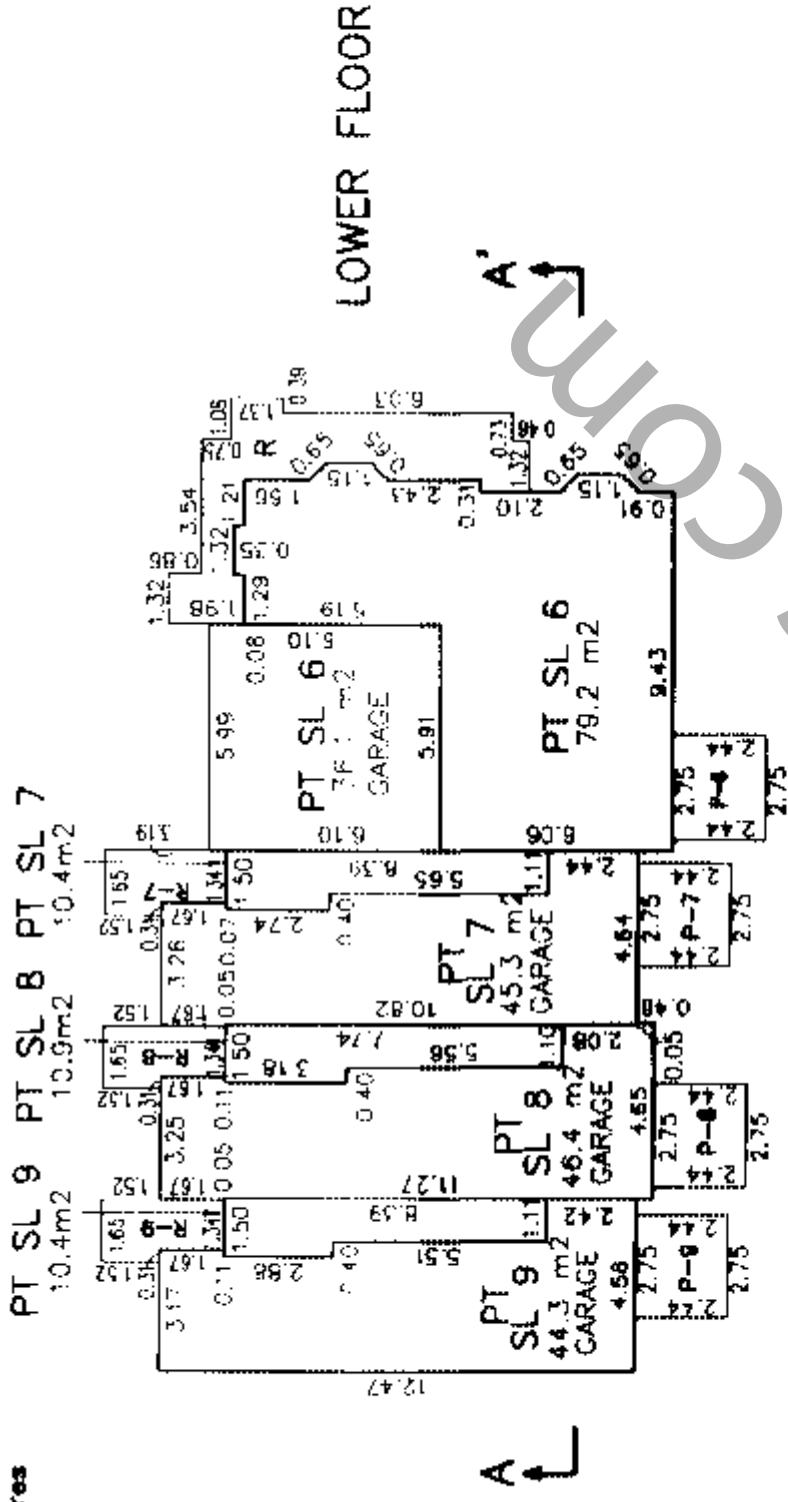
Cameron Land Surveying Ltd.  
B.C. Land Surveyors  
Unit 203-6333-148th St.  
Surrey, B.C. V3S 3C3  
Phone: 597-3777  
Fax: 597-3783

Dated this 18th day of March, 2005.

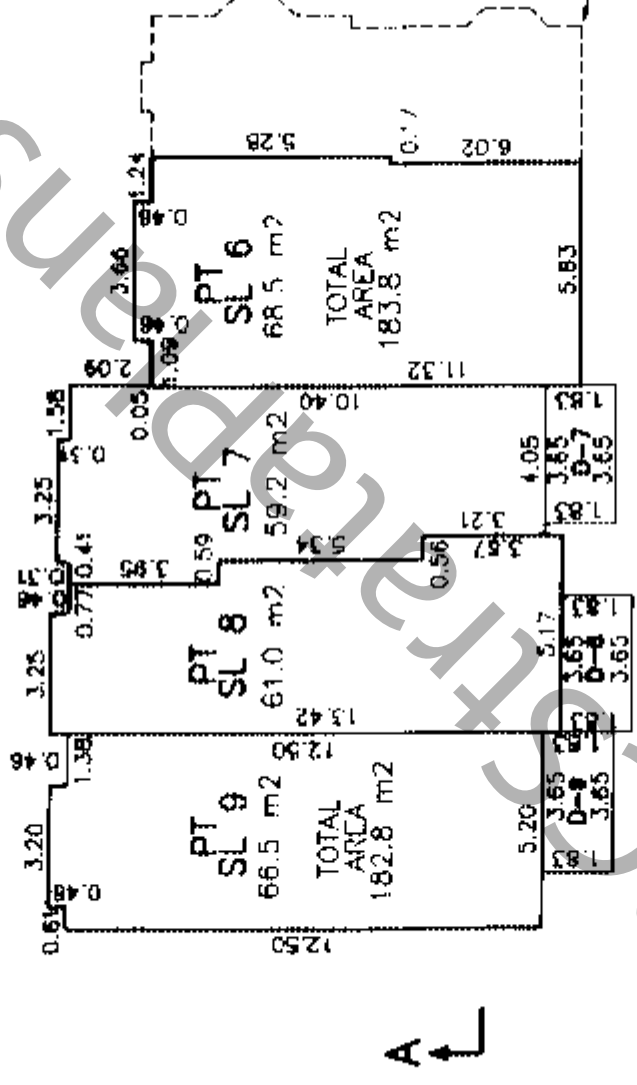
*[Signature]*  
B.C.L.S.  
File: A-3744-S5

**FLOOR PLANS & SECTION  
BUILDING 2**

Sheet 6 of 18 Sheets  
**STRATA PLAN BCS 1216**

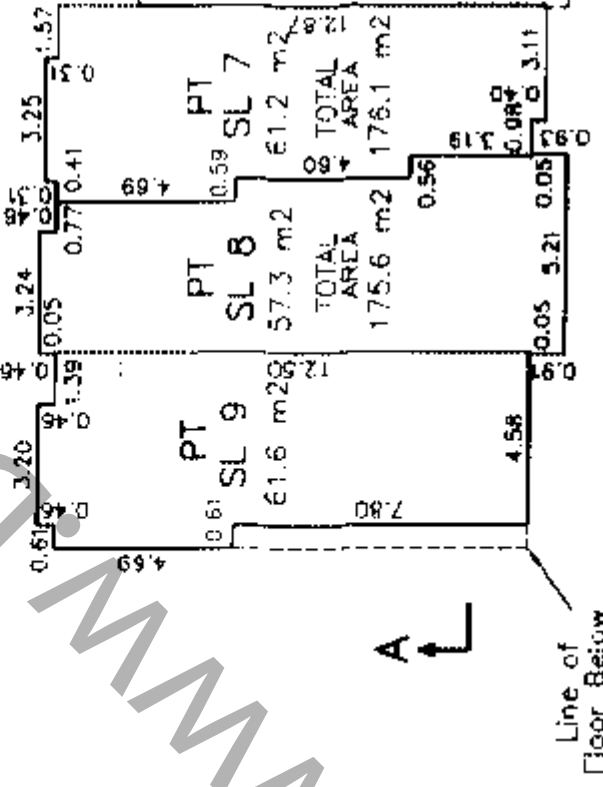


LOWER FLOOR



MAIN FLOOR

Line of Floor Below



UPPER FLOOR


Line of Floor Below

UPPER	PT SL 9	PT SL 8	PT SL 7
MAIN	PT SL 9	PT SL 8	PT SL 7
LOWER	PT SL 9	PT SL 8	PT SL 7
			PT SL 6

SECTION A - A'

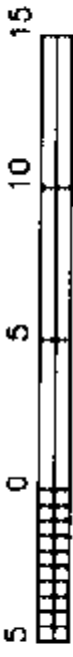
Cameron Land Surveying Ltd.  
B.C. Land Surveyors  
Unit 203-6333-148th St.  
Surrey, B.C. V3S 3C3  
Phone: 597-3777  
Fax: 597-3783

Dated this 18th day of March, 2005.

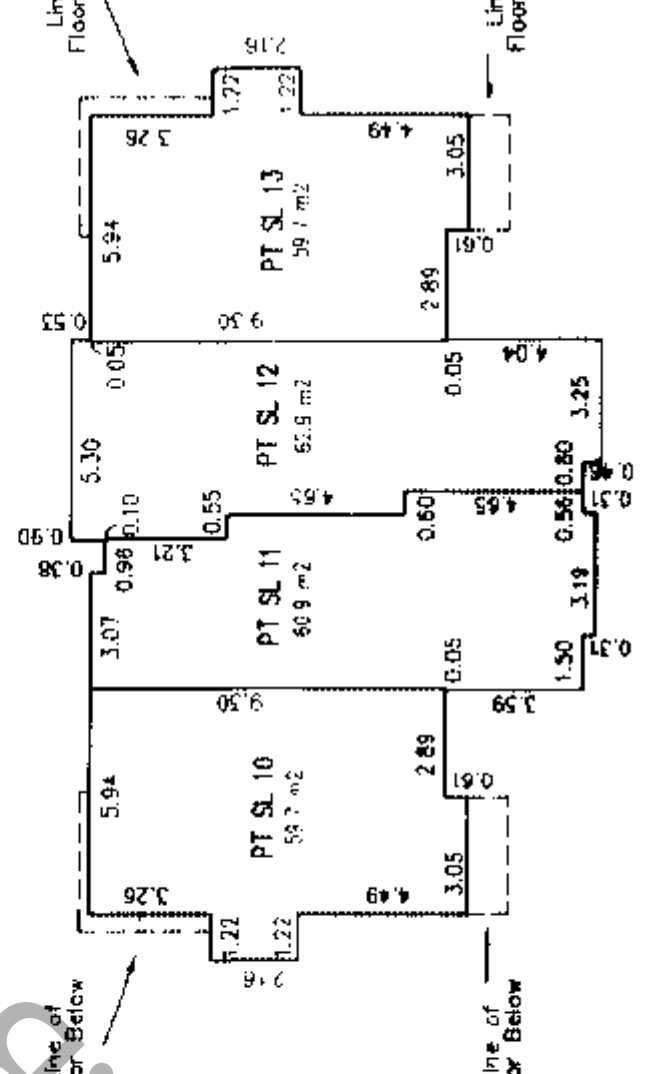
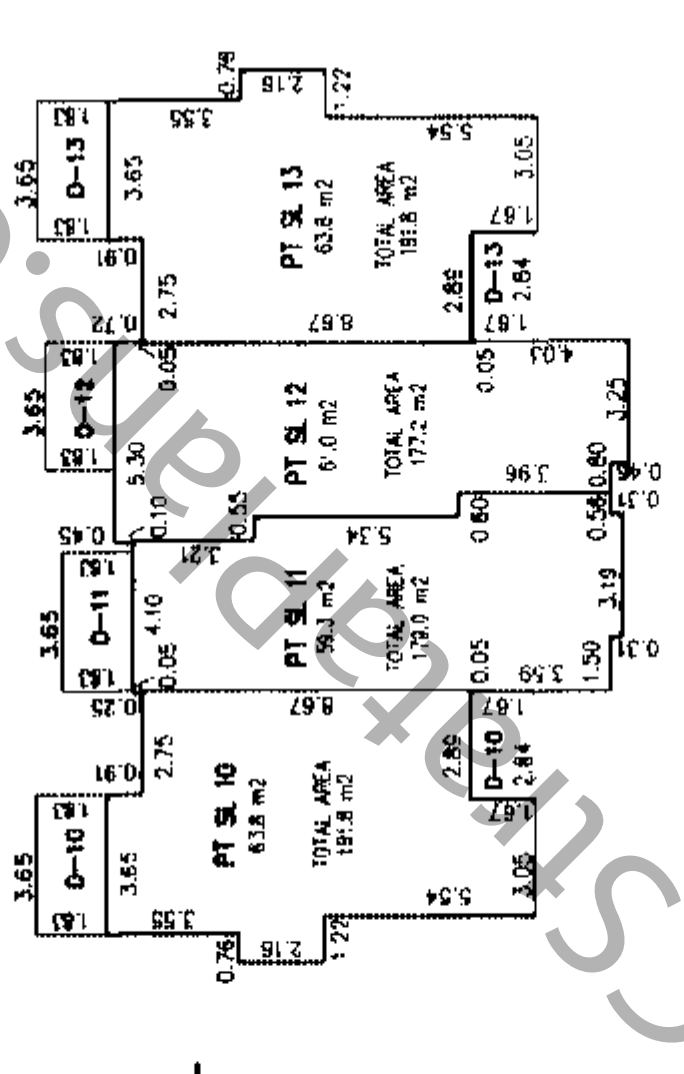
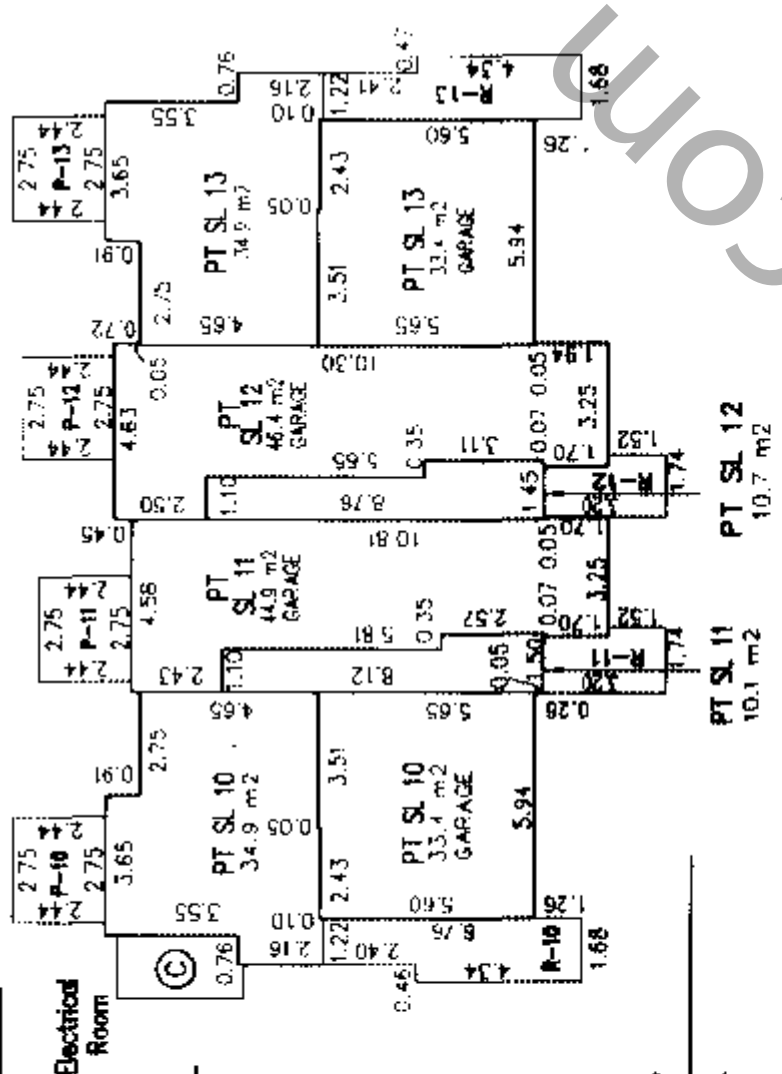
  
File: A-3744-S6

**FLOOR PLANS AND SECTIONS  
BUILDING 3**

Sheet 7 of 18 Sheets  
**STRATA PLAN BCS 1216**



GRAPHIC SCALE - METRES 1:200  
All distances are in metres



UPPER	PT SL 10	PT SL 11	PT SL 12	PT SL 13
MAIN	PT SL 10	PT SL 11	PT SL 12	PT SL 13
LOWER	PT SL 10	PT SL 11	PT SL 12	PT SL 13

**SECTION A - A'**

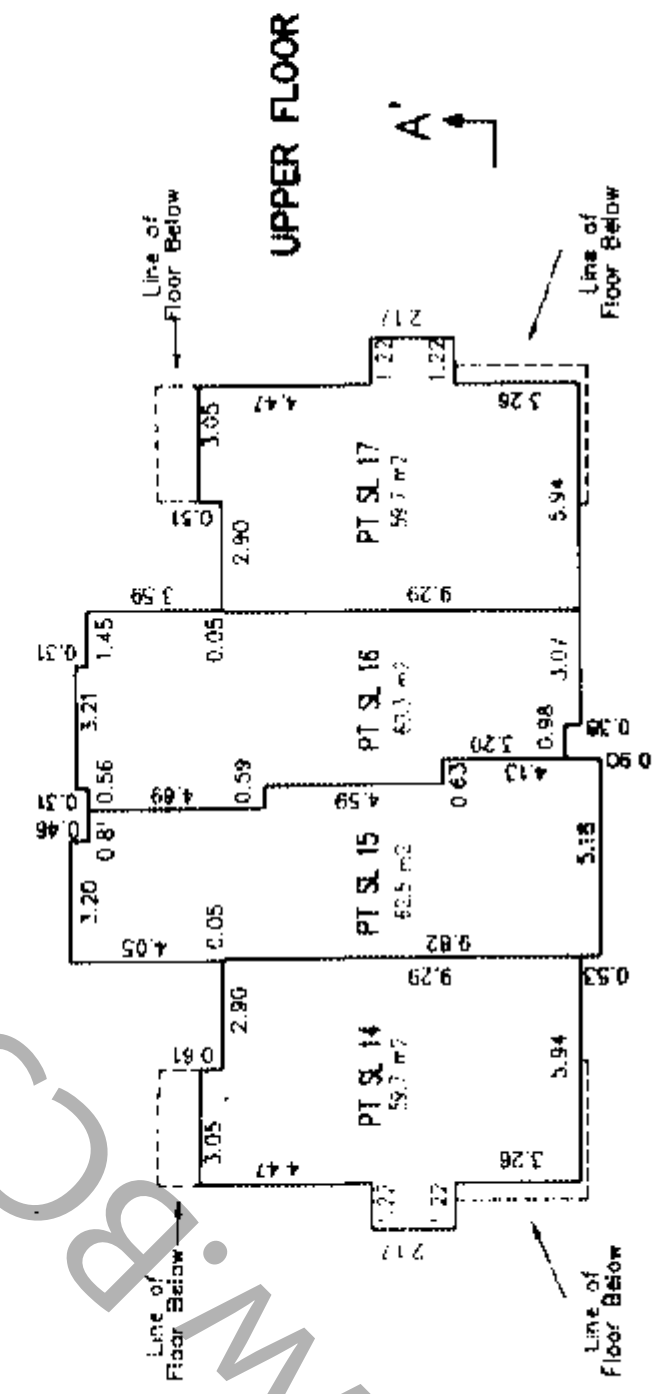
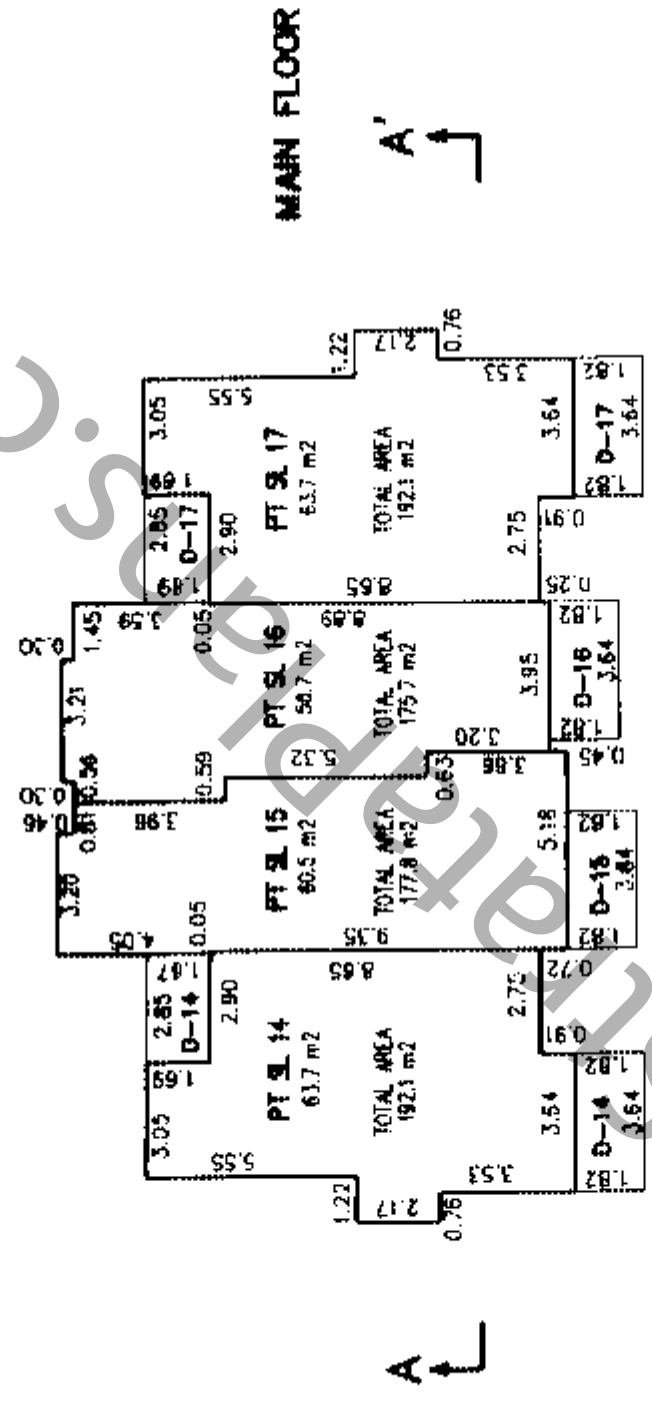
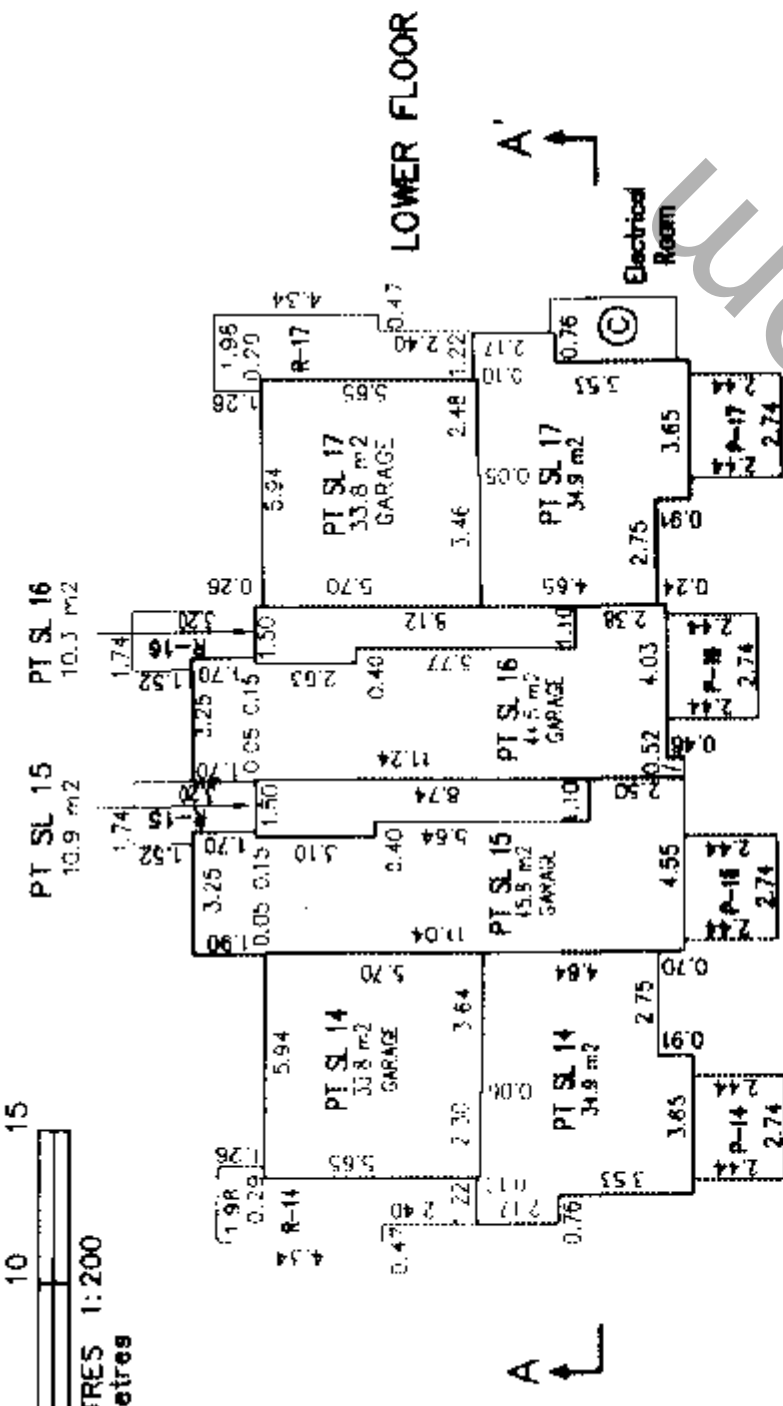
Cameron Land Surveying Ltd.  
B.C. Land Surveyors  
Unit 203-6333-148th St.  
Surrey, B.C. V3S 3C3  
Phone: 597-3777  
Fax: 597-3783

Dated this 18th day of March, 2005.

B.C.L.S.  
File: A-3744-S7

**FLOOR PLANS AND SECTION  
BUILDING 4**

Sheet 8 of 18 Sheets  
**STRATA PLAN BCS 1216**



**SECTION A - A'**

UPPER	PT SL 14	PT SL 15	PT SL 16	PT SL 17
MAIN	PT SL 14	PT SL 15	PT SL 16	PT SL 17
LOWER	PT SL 14	PT SL 15	PT SL 16	PT SL 17

Cameron Land Surveying Ltd.  
B.C. Land Surveyors  
Unit 203-6333-148th St.  
Surrey, B.C. V3S 3C3  
Phone: 597-3777  
Fax: 597-3783

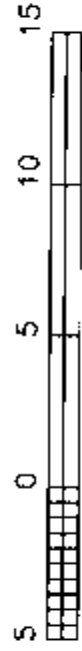
Dated this 18th day of March, 2005.

*[Signature]*  
File: A-3744-S8  
B.C.L.S.

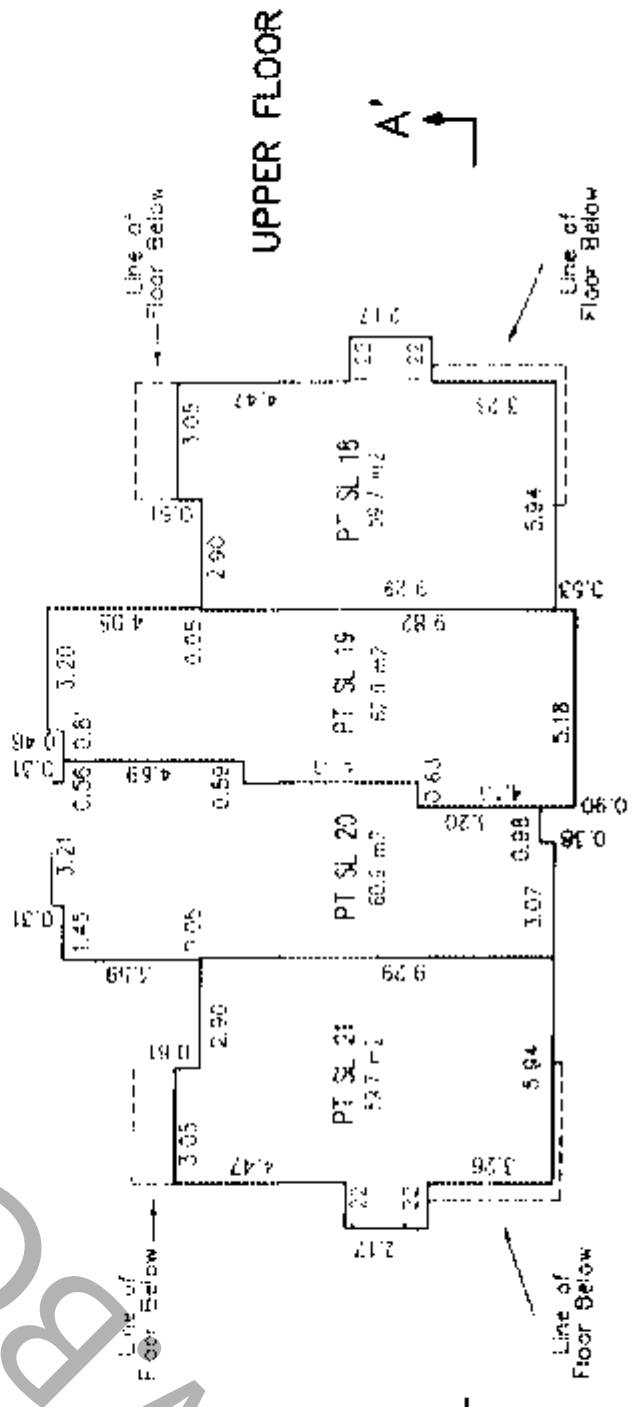
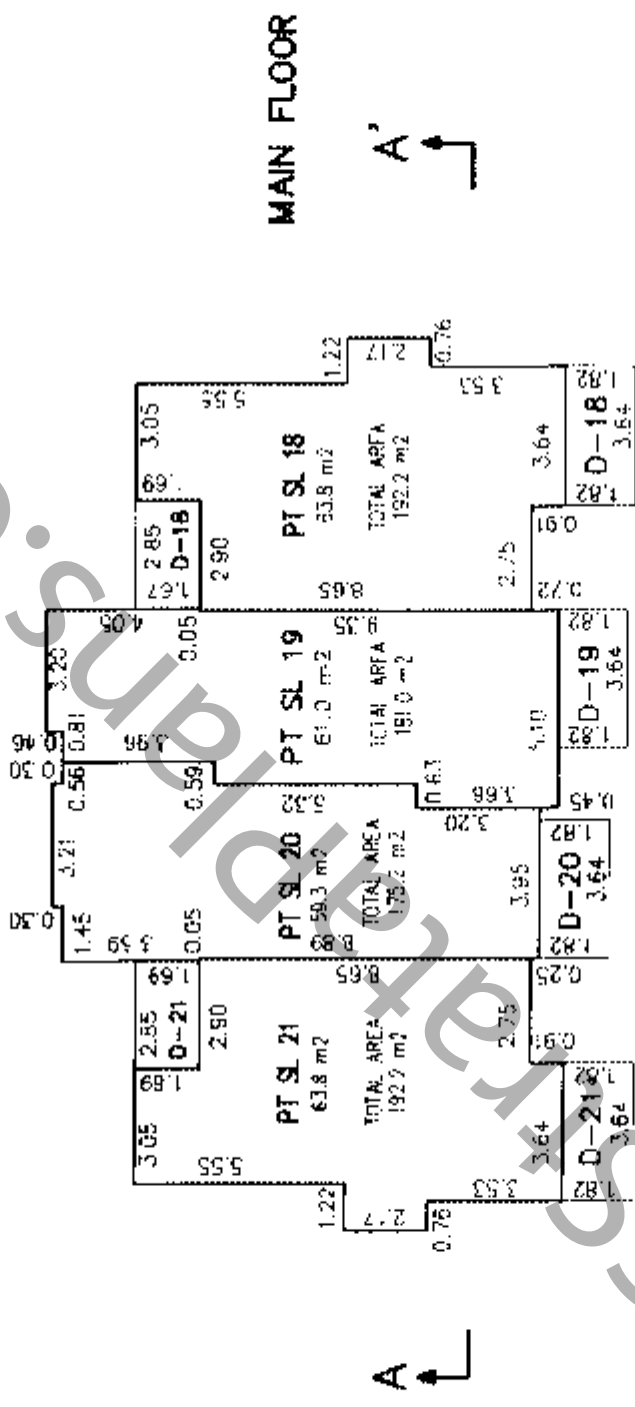
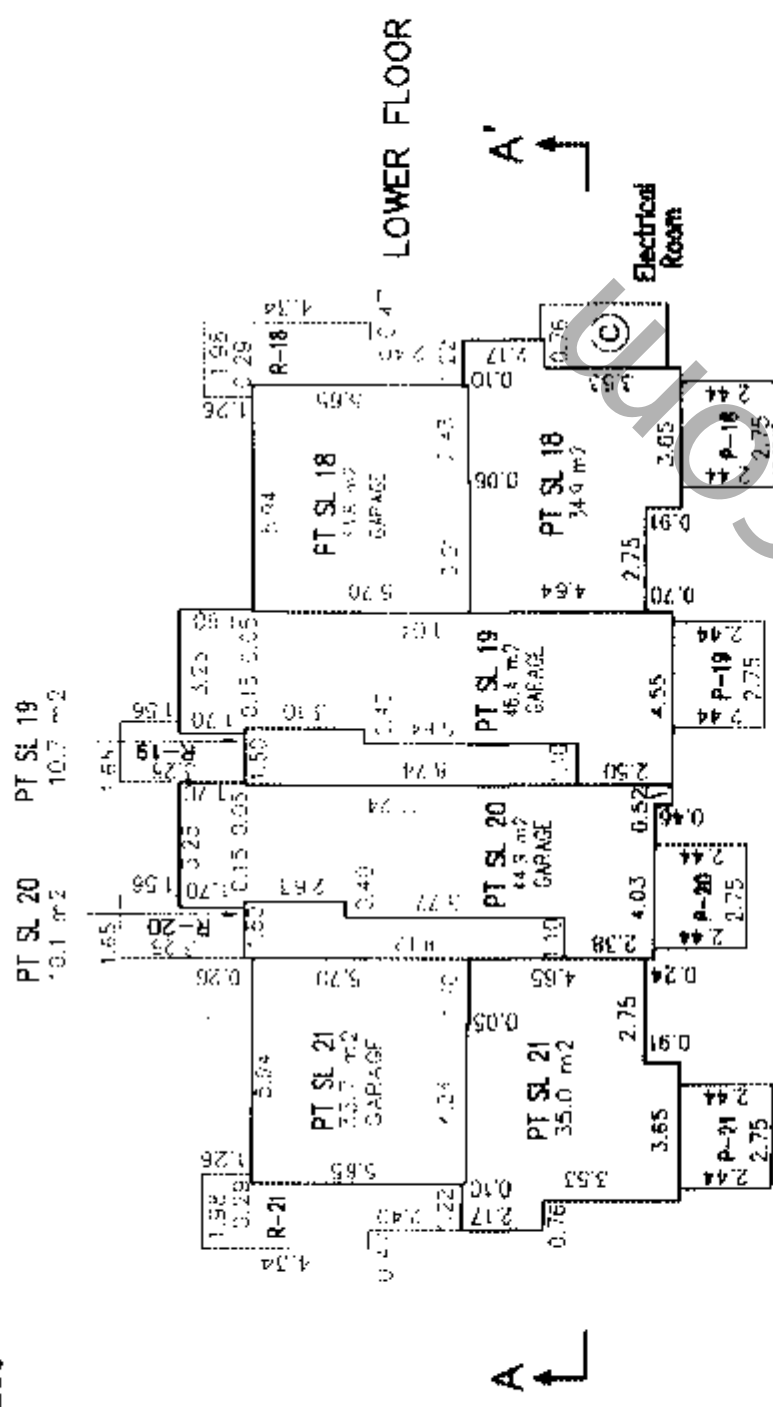


**FLOOR PLANS AND SECTION  
BUILDING 5**

Sheet 9 of 18 Sheets  
**STRATA PLAN BCS 1216**



GRAPHIC SCALE - METRES 1:200  
All distances are in metres



UPPER	PT SL 21	PT SL 20	PT SL 19	PT SL 18
MAIN	PT SL 21	PT SL 20	PT SL 19	PT SL 18
LOWER	PT SL 21	PT SL 20	PT SL 19	PT SL 18

SECTION A - A'

Cameron Land Surveying Ltd.  
B.C. Land Surveyors  
Unit 203-6333-148th St.  
Surrey, B.C. V3S 3C3  
Phone: 597-3777  
Fax: 597-3783

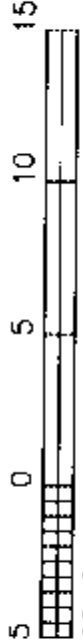
Dated this 18th day of March, 2005.

*[Signature]*

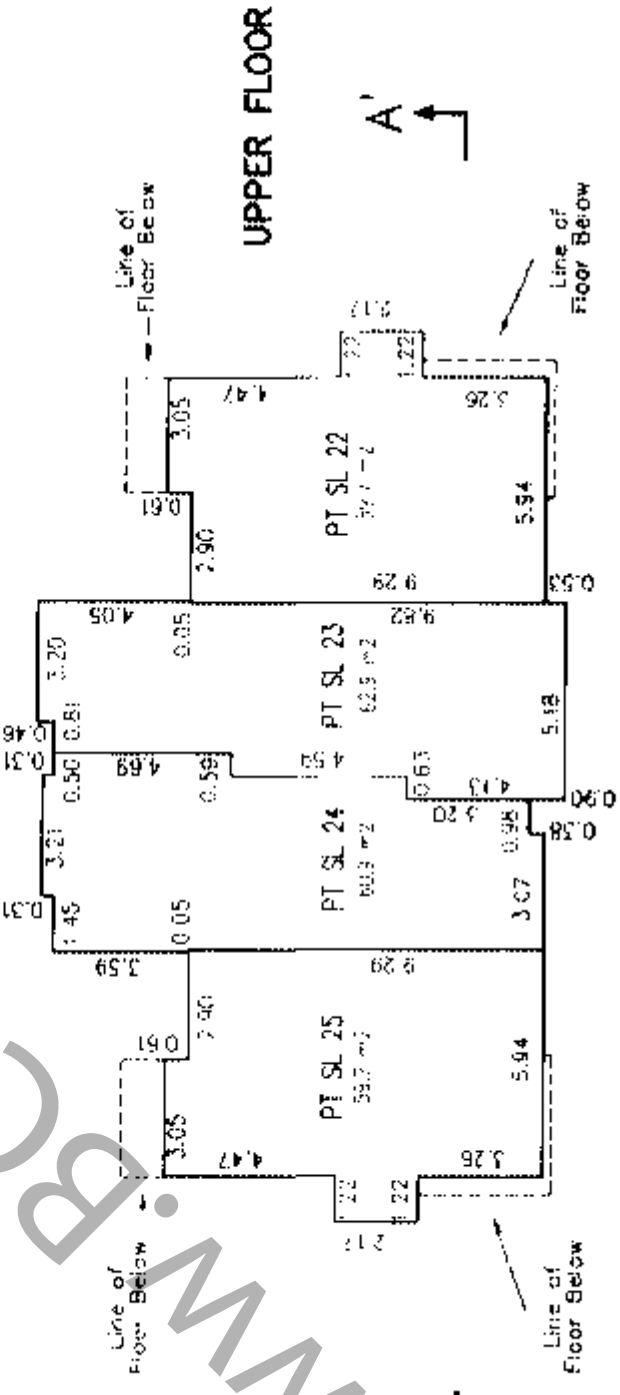
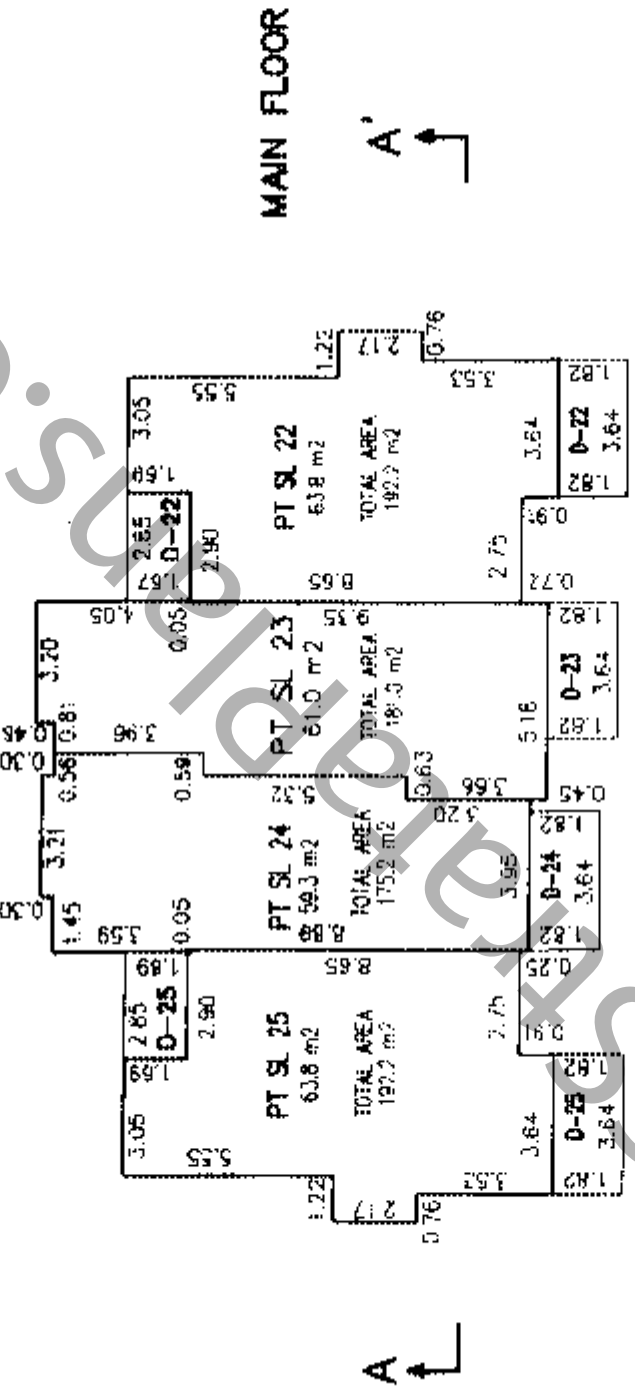
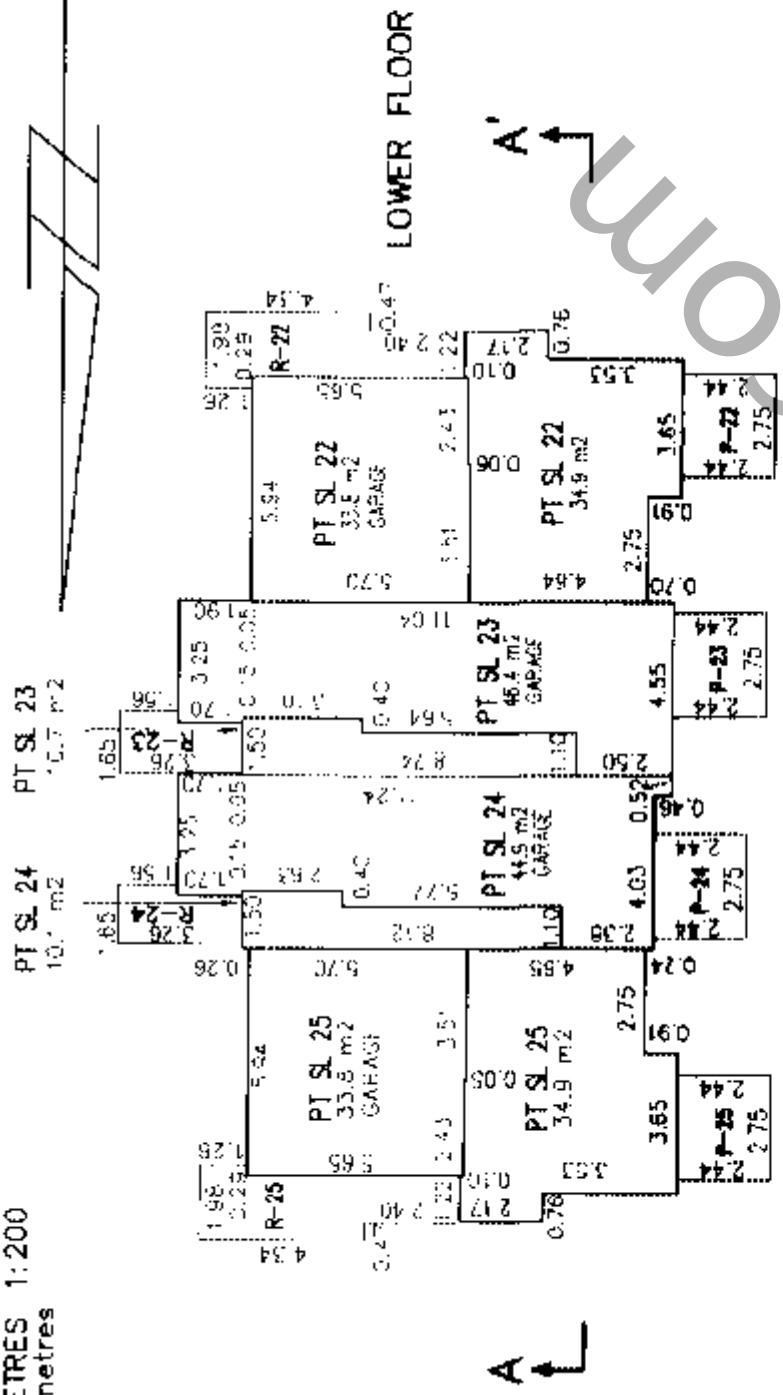
File: A-3744-S9  
B.C.L.S.

**FLOOR PLANS AND SECTION  
BUILDING 6**

Sheet 10 of 18 Sheets  
**STRATA PLAN BCS 1216**



GRAPHIC SCALE - METRES 1:200  
All distances are in metres



**SECTION A - A'**

UPPER	PT SL 25	PT SL 24	PT SL 23	PT SL 22
MAIN	PT SL 25	PT SL 24	PT SL 23	PT SL 22
LOWER	PT SL 25	PT SL 24	PT SL 23	PT SL 22

Cameron Land Surveying Ltd.  
B.C. Land Surveyors  
Unit 203-6333-148th St.  
Surrey, B.C. V3S 3C3  
Phone: 597-3777  
Fax: 597-3783

Dated this 18th day of March, 2005.  
*[Signature]*  
B.C.L.S.  
File: A-3744-S10

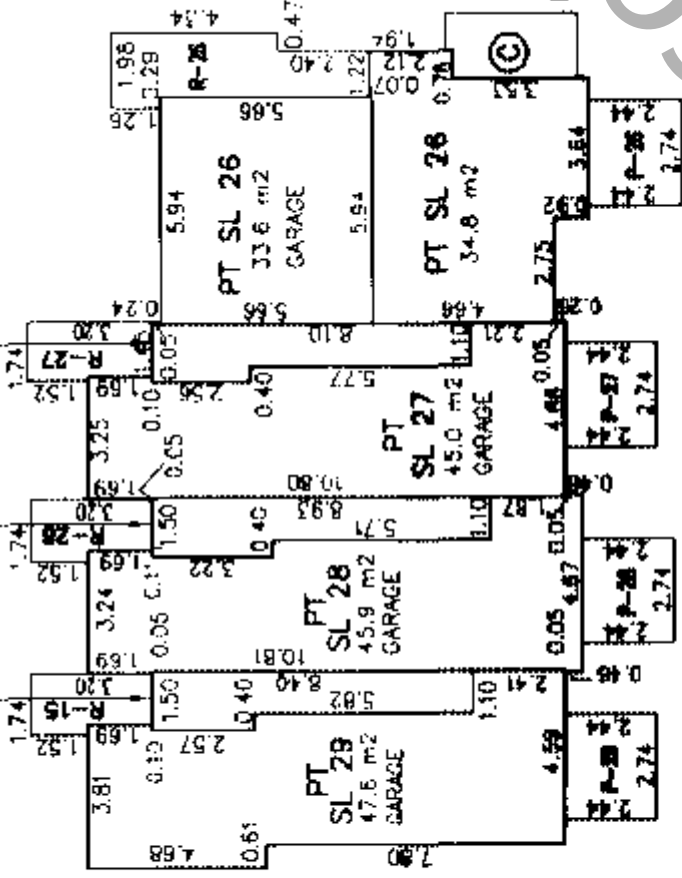
**FLOOR PLANS AND SECTIONS  
BUILDING 7**

Sheet 11 of 18 Sheets  
**STRATA PLAN BCS 1216**



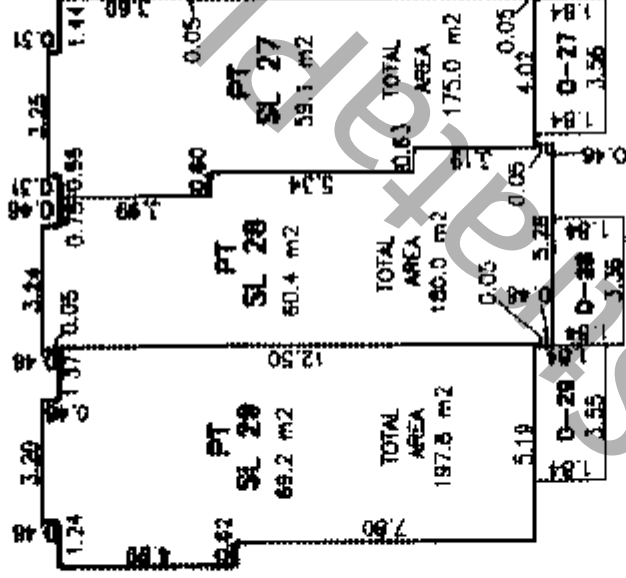
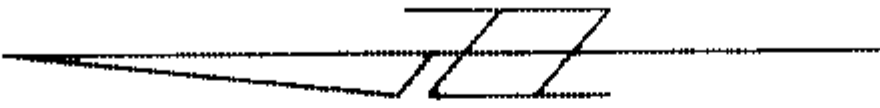
GRAPHIC SCALE - METRES 1:200  
All distances are in metres

PT SL 29 10.3 m<sup>2</sup>  
PT SL 28 1.1 m<sup>2</sup>  
PT SL 27 10.2 m<sup>2</sup>



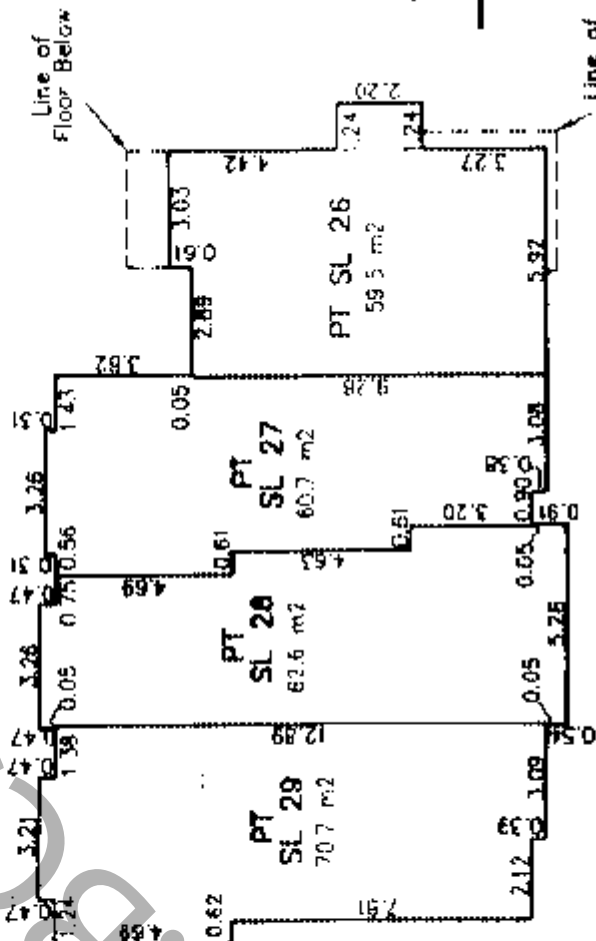
LOWER FLOOR

A' ↑



MAIN FLOOR

A' ↑



UPPER FLOOR

A' ↑

**SECTION A - A'**

UPPER	PT SL 29	PT SL 28	PT SL 27	PT SL 26
MAIN	PT SL 29	PT SL 28	PT SL 27	PT SL 26
LOWER	PT SL 29	PT SL 28	PT SL 27	PT SL 26

Cameron Land Surveying Ltd.  
B.C. Land Surveyors  
Unit 203-6333-148th St.  
Surrey, B.C. V3S 3C3  
Phone: 597-3777  
Fax: 597-3783

Dated this 18th day of March, 2005.

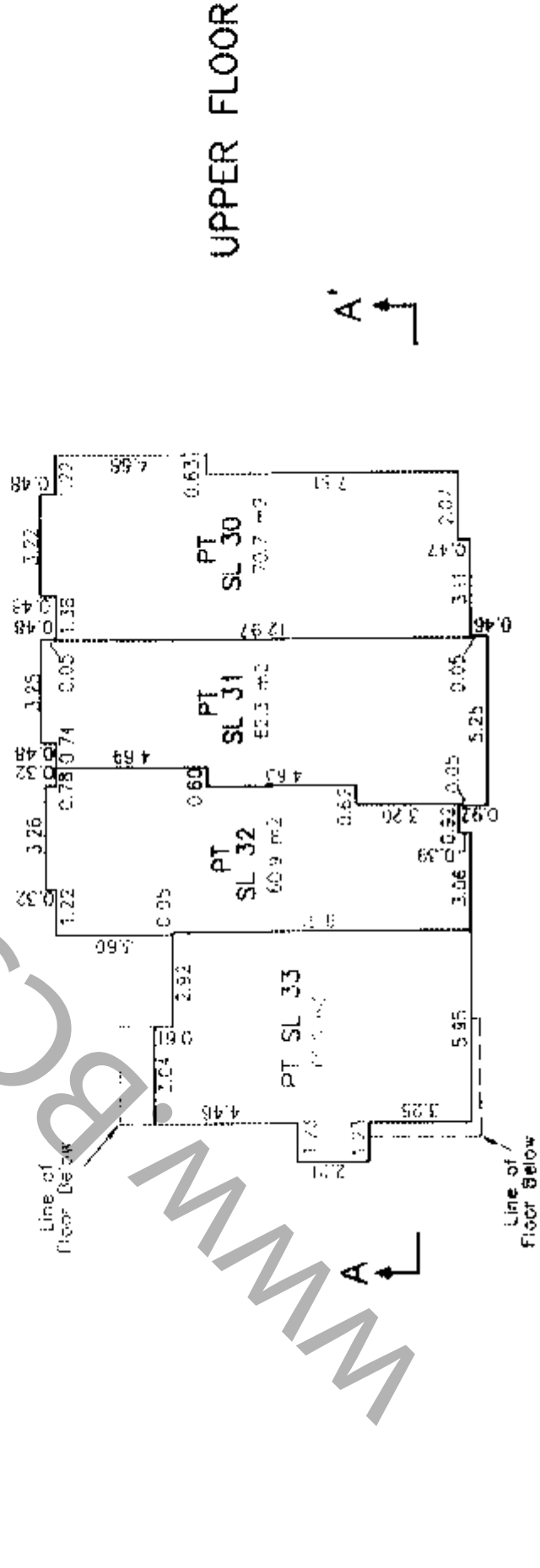
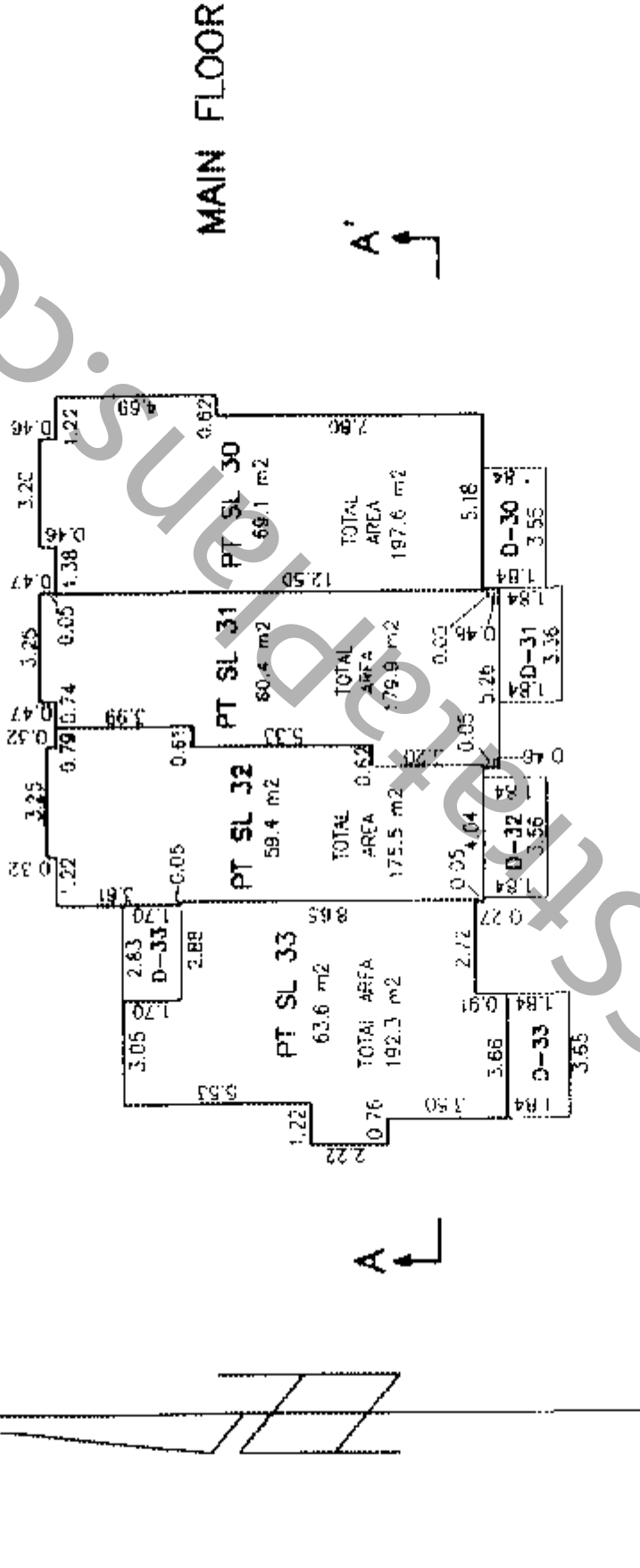
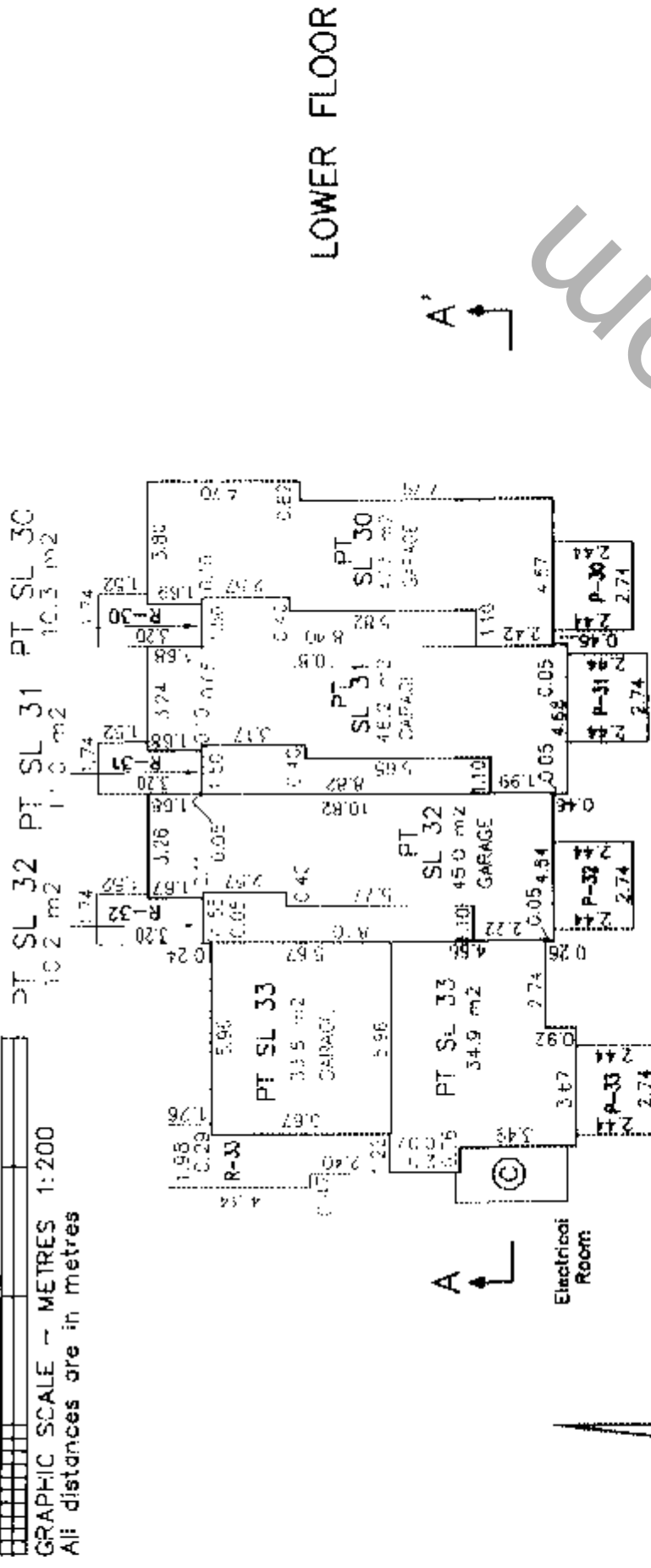
*[Signature]*  
B.C.L.S.  
REG: A-3744-S11

**FLOOR PLANS AND SECTIONS  
BUILDING 8**

Sheet 12 of 18 Sheets  
**STRATA PLAN BCS 1216**



GRAPHIC SCALE - METRES 1:200  
All distances are in metres



**SECTION A - A'**

PT SL 33	PT SL 32	PT SL 31	PT SL 30
PT SL 33	PT SL 32	PT SL 31	PT SL 30
PT SL 33	PT SL 32	PT SL 31	PT SL 30

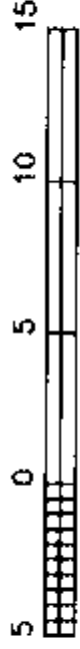
Cameron Land Surveying Ltd.  
B.C. Land Surveyors  
Unit 203-6333-148th St.  
Surrey, B.C. V3S 3C3  
Phone: 597-3777  
Fax: 597-3783

Dated this 18th day of March, 2005.

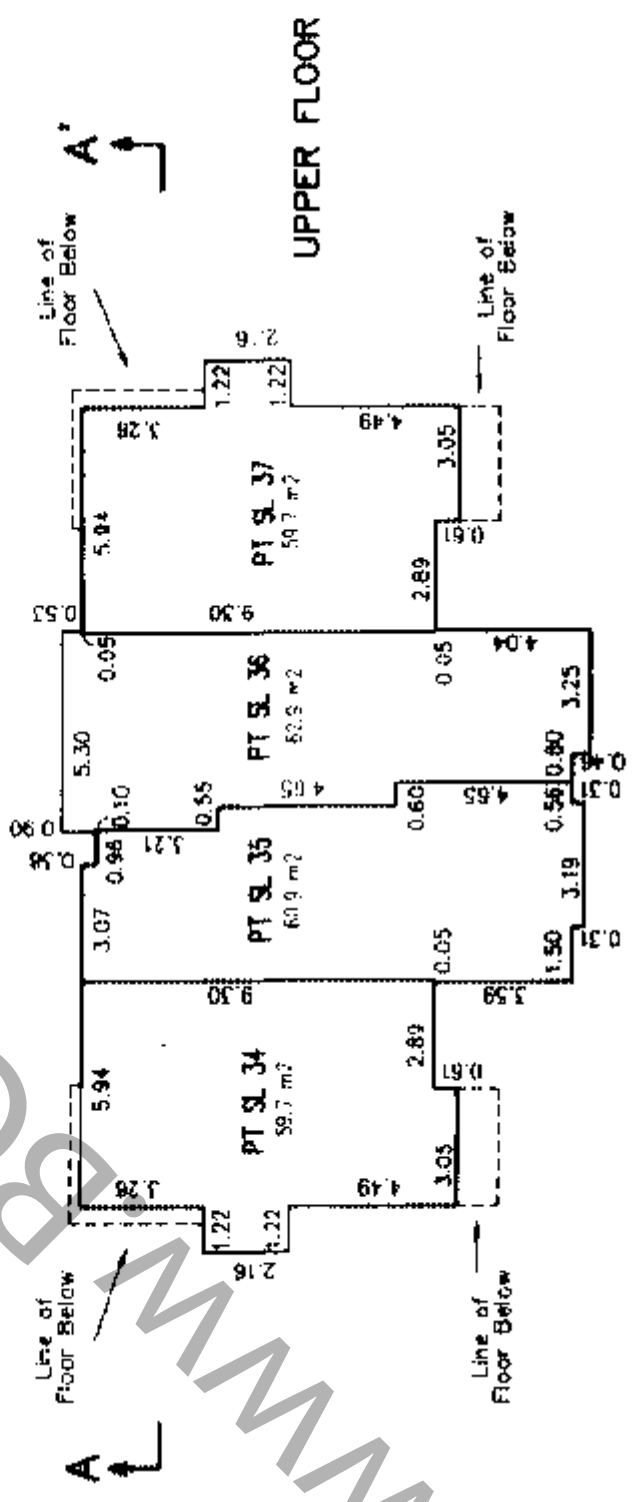
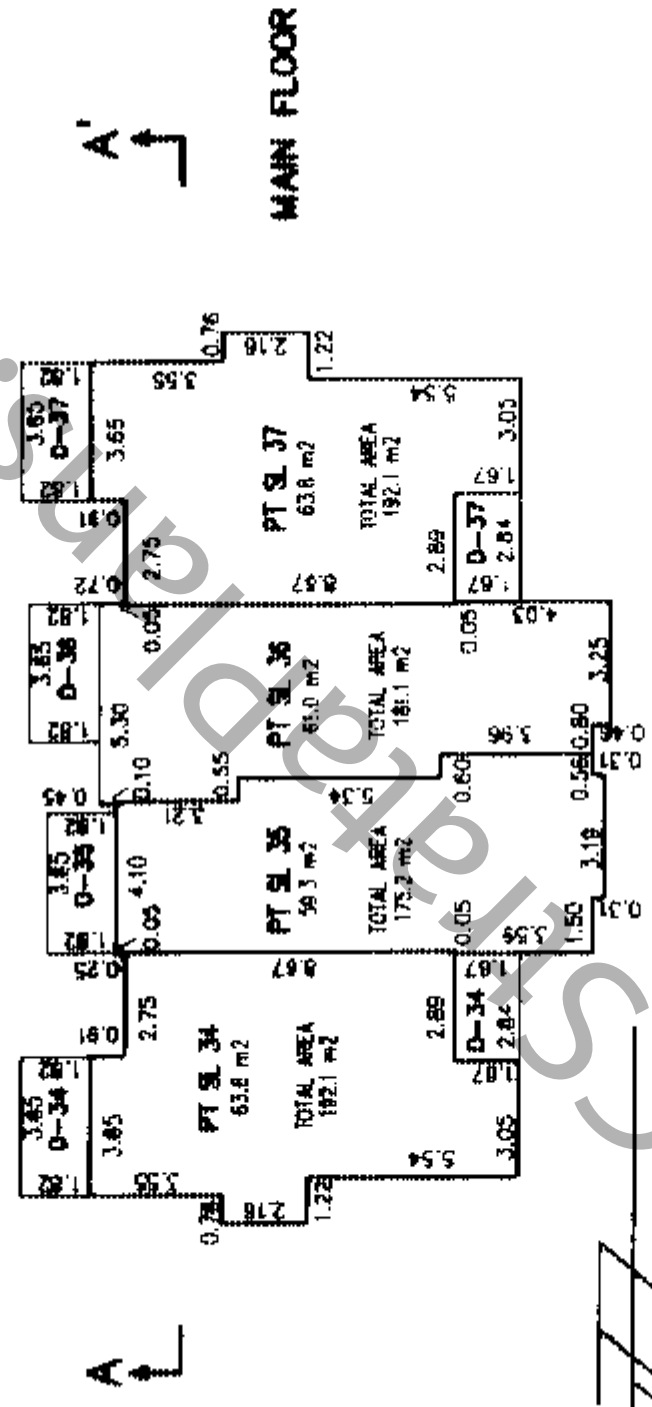
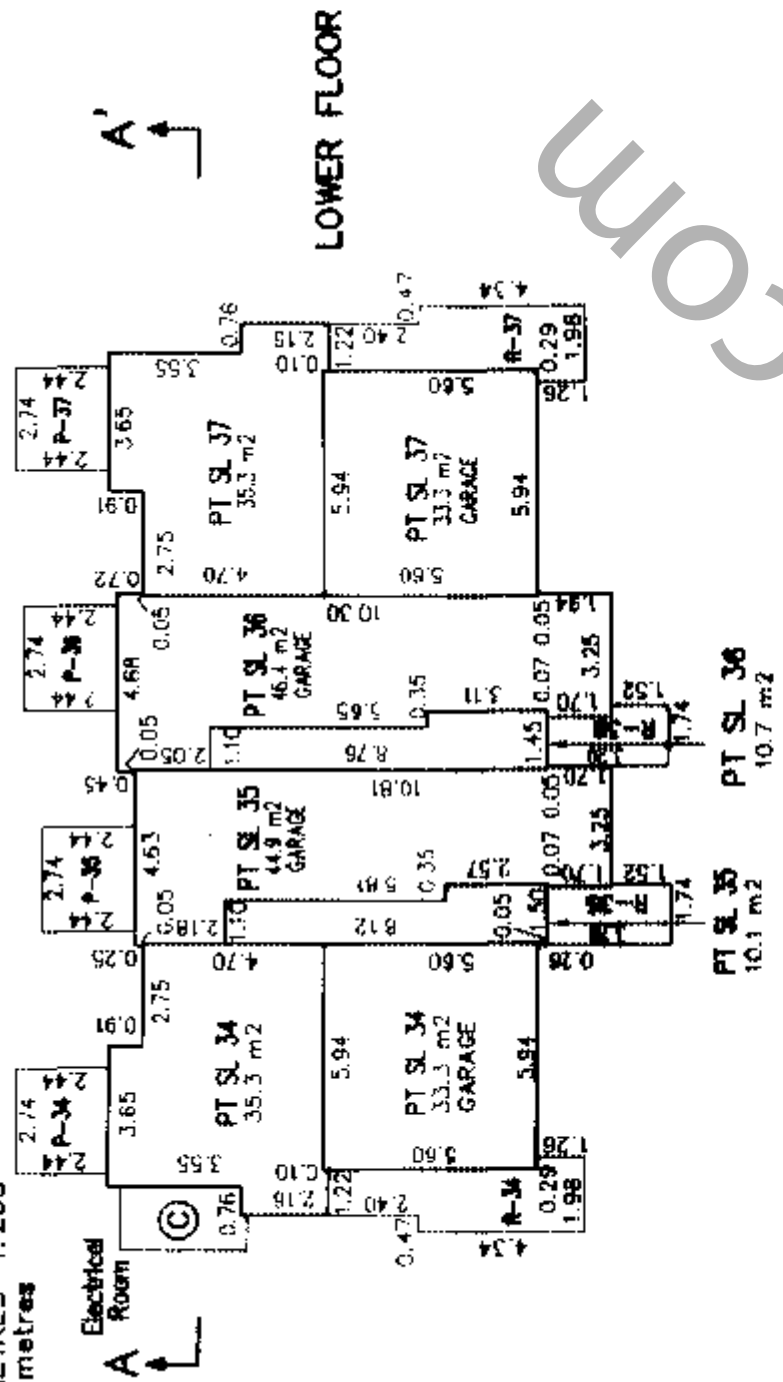
*[Signature]*  
B.C.L.S.  
File: A-3744-S12

**FLOOR PLANS AND SECTION**  
**BUILDING 9**

Sheet 13 of 18 Sheets  
**STRATA PLAN BCS 1216**



GRAPHIC SCALE - METRES 1:200  
All distances are in metres



**SECTION A - A'**

UPPER	PT SL 34	PT SL 35	PT SL 36	PT SL 37
MAIN	PT SL 34	PT SL 35	PT SL 36	PT SL 37
LOWER	PT SL 34	PT SL 35	PT SL 36	PT SL 37

Cameron Land Surveying Ltd.  
B.C. Land Surveyors  
Unit 203-6333-148th St.  
Surrey, B.C. V3S 3C3  
Phone: 597-3777  
Fax: 597-3783

Dated this 18th day of March, 2005.

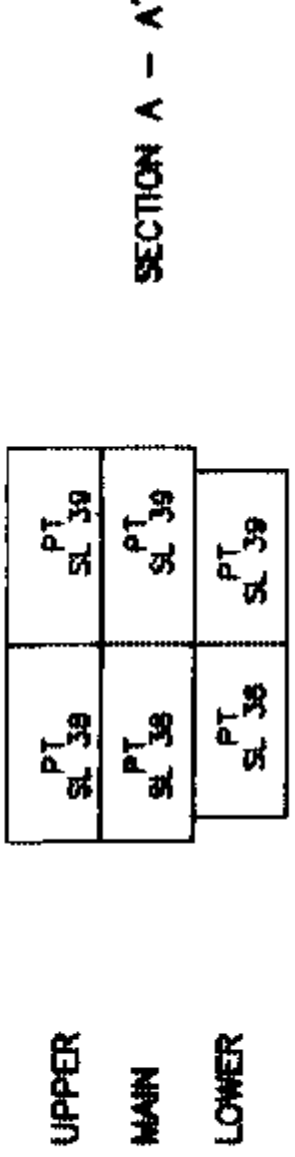
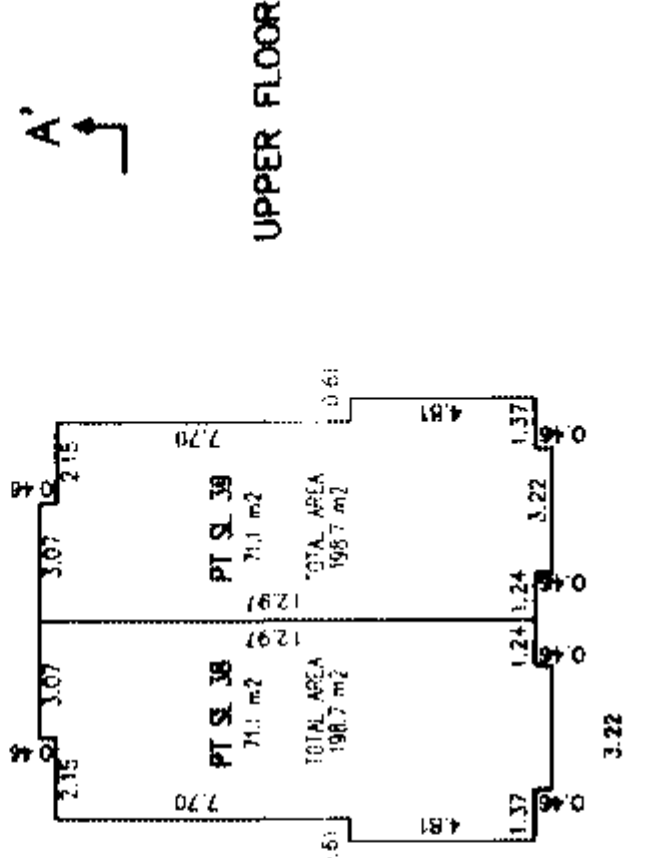
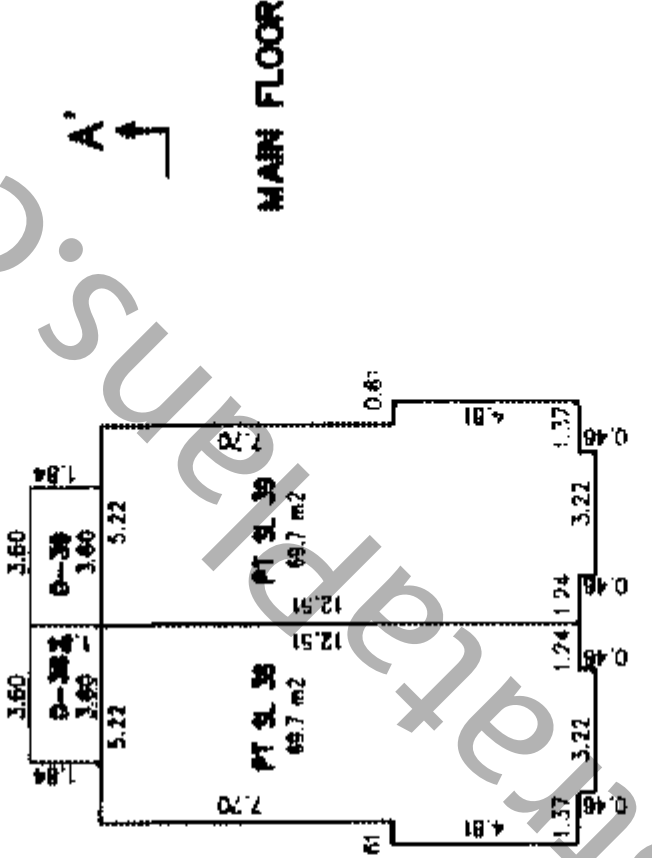
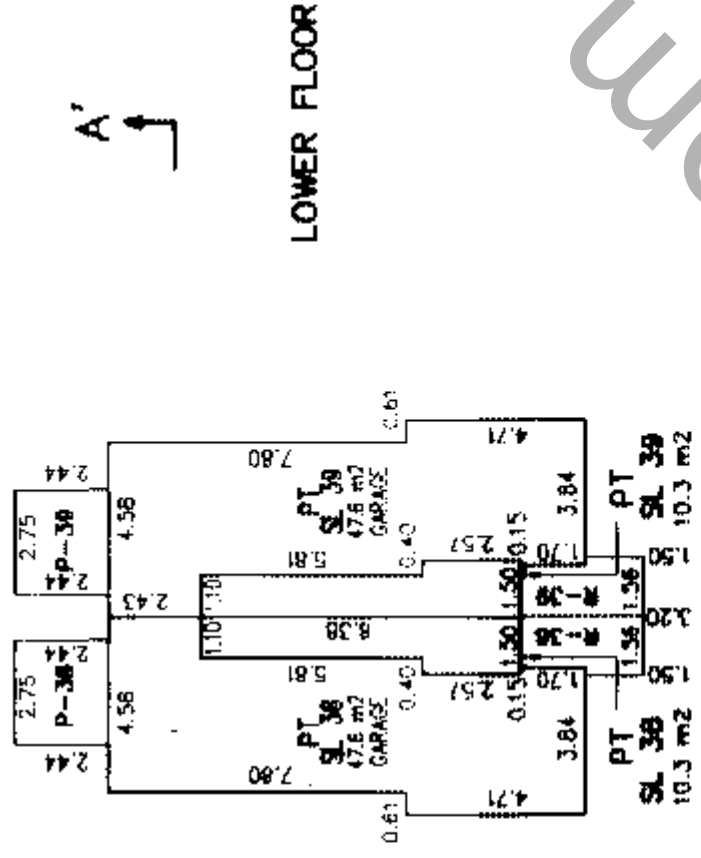
*[Signature]*  
B.C.L.S.  
FIG: A-3744-S13

**FLOOR PLANS AND SECTION  
BUILDING 14**

Sheet 14 of 18 Sheets  
**STRATA PLAN BCS 1216**



GRAPHIC SCALE - METRES 1:200  
All distances are in metres



Cameron Land Surveying Ltd.  
B.C. Land Surveyors  
Unit 203-6333-148th St.  
Surrey, B.C. V3S 3C3  
Phone: 597-3777  
Fax: 597-3783

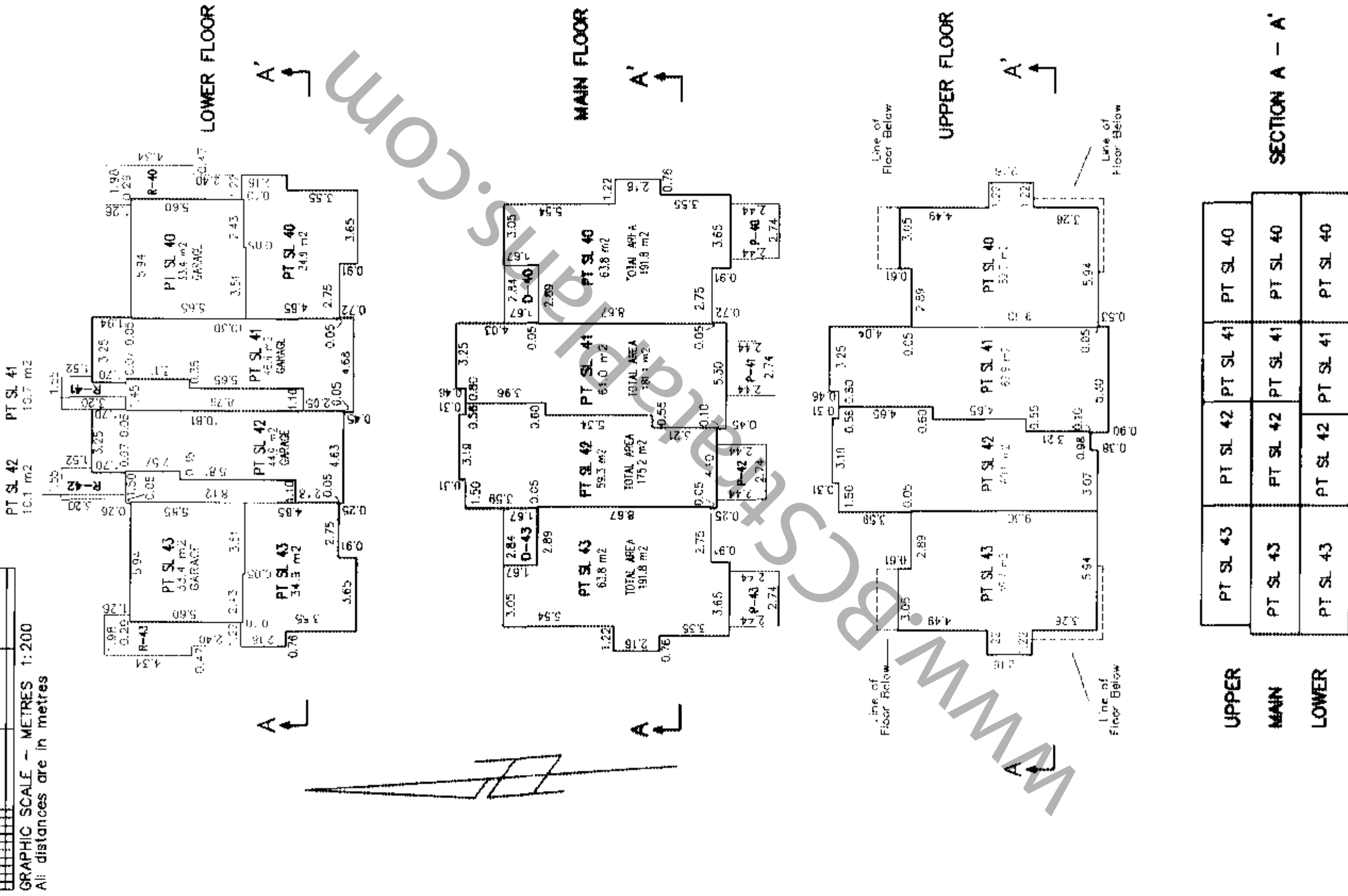
Dated this 18th day of March, 2005.  
*[Signature]*  
B.C.L.S.  
File: A-3744-S14

# FLOOR PLANS AND SECTION BUILDING 10

Sheet 15 of 18 Sheets  
STRATA PLAN BCS 1216



GRAPHIC SCALE - METRES 1:200  
All distances are in metres



SECTION A - A'				
UPPER	PT SL 43	PT SL 42	PT SL 41	PT SL 40
MAIN	PT SL 43	PT SL 42	PT SL 41	PT SL 40
LOWER	PT SL 43	PT SL 42	PT SL 41	PT SL 40

Cameron Land Surveying Ltd.  
B.C. Land Surveyors  
Unit 203-6333-148th St.  
Surrey, B.C. V3S 3C3  
Phone: 597-3777  
Fax: 597-3783

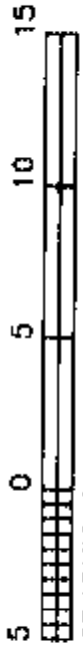
Dated this 18th day of March, 2005.

*[Signature]*  
File: A-3744-S15

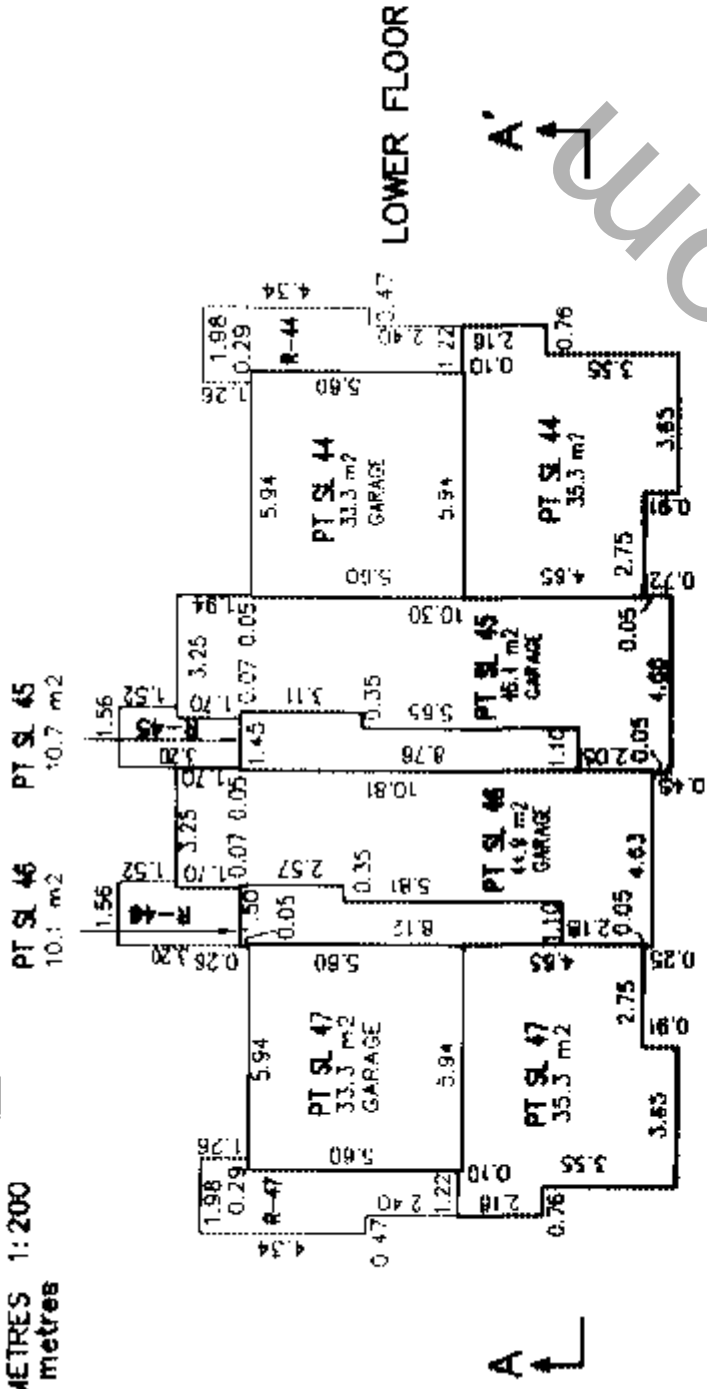
ORIGINAL

**FLOOR PLANS AND SECTION  
BUILDING 11**

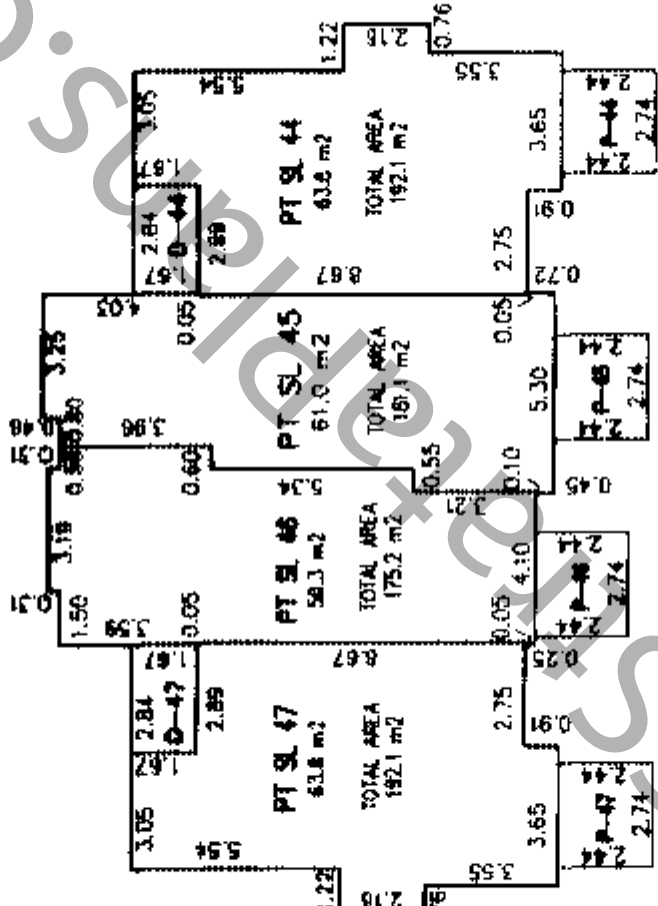
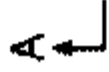
Sheet 16 of 18 Sheets  
**STRATA PLAN BCS 1216**



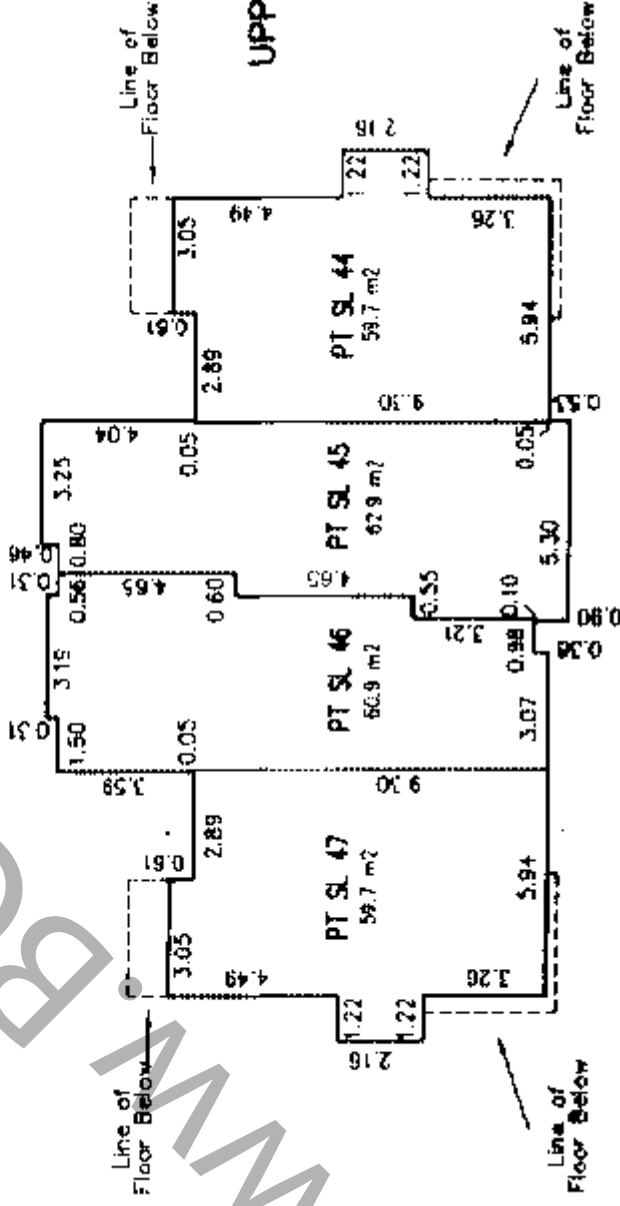
GRAPHIC SCALE - METRES 1:200  
All distances are in metres



LOWER FLOOR



MAIN FLOOR



UPPER FLOOR



UPPER	PT SL 47	PT SL 48	PT SL 45	PT SL 44
MAIN	PT SL 47	PT SL 48	PT SL 45	PT SL 44
LOWER	PT SL 47	PT SL 48	PT SL 45	PT SL 44

SECTION A - A'

Cameron Land Surveying Ltd.  
B.C. Land Surveyors  
Unit 203-6333-148th St.  
Surrey, B.C. V3S 3C3  
Phone: 587-3777  
Fax: 587-3783

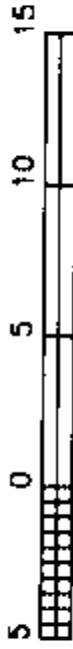
Dated this 15th day of March, 2005.

B.C.L.S.  
File: A-3744-S16

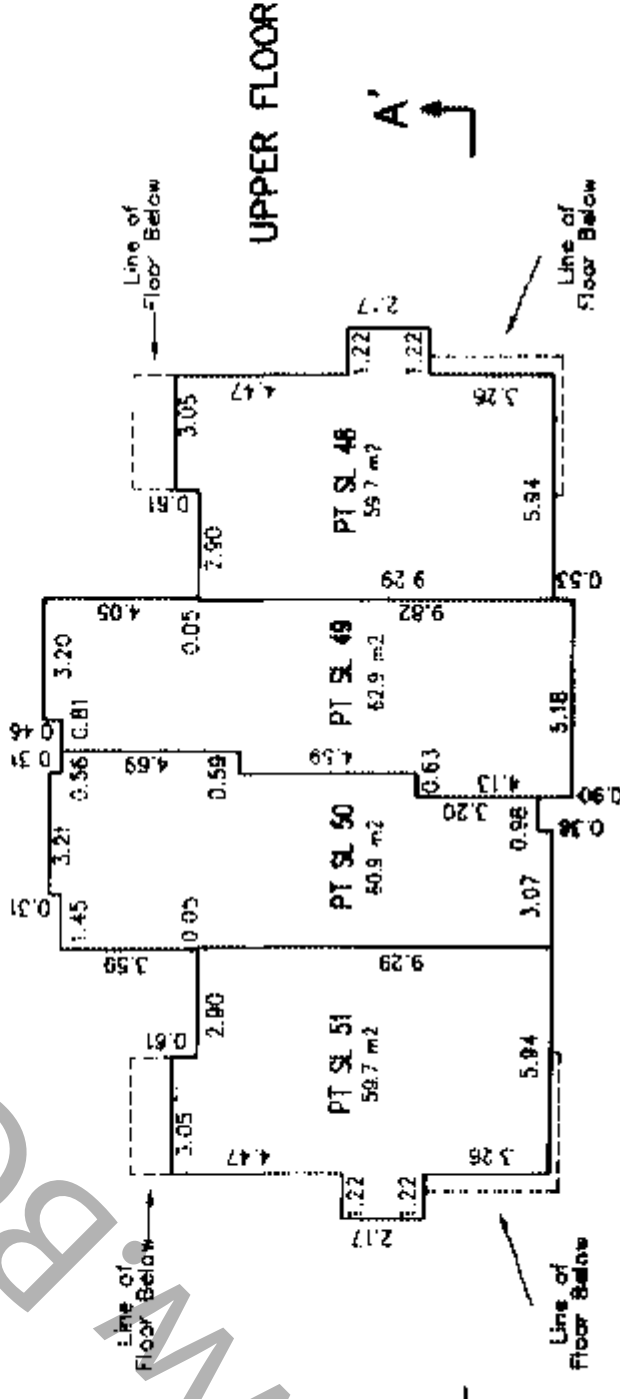
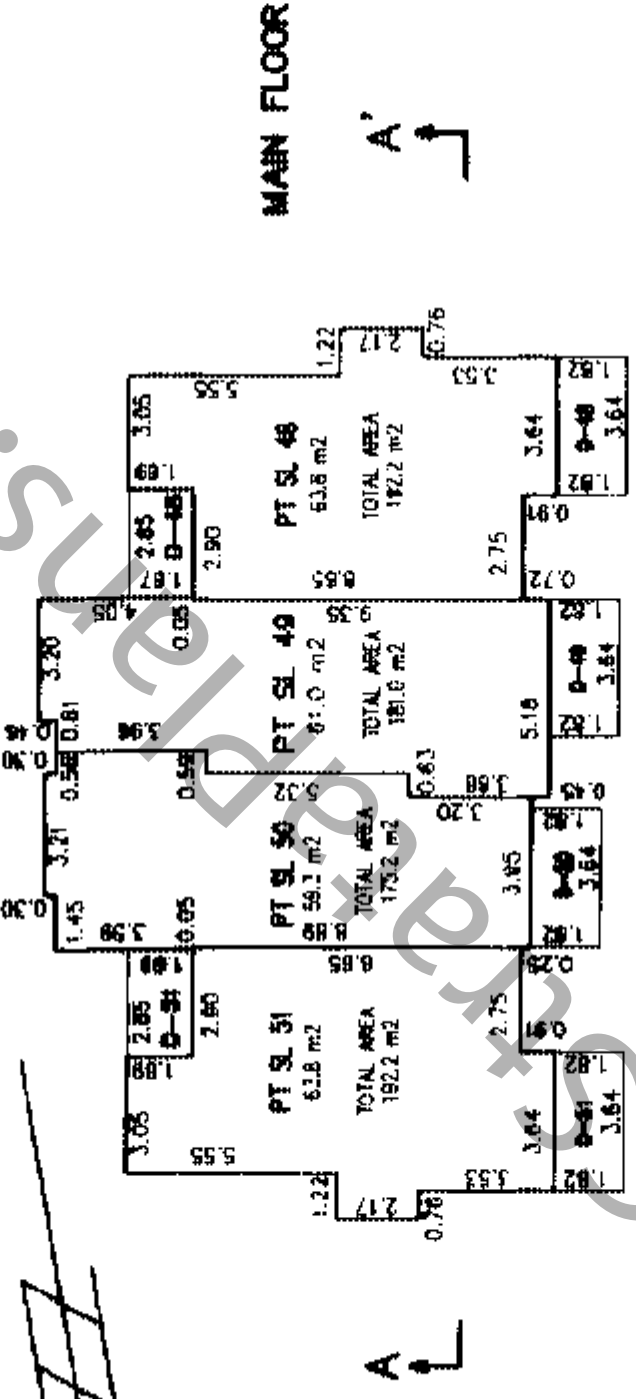
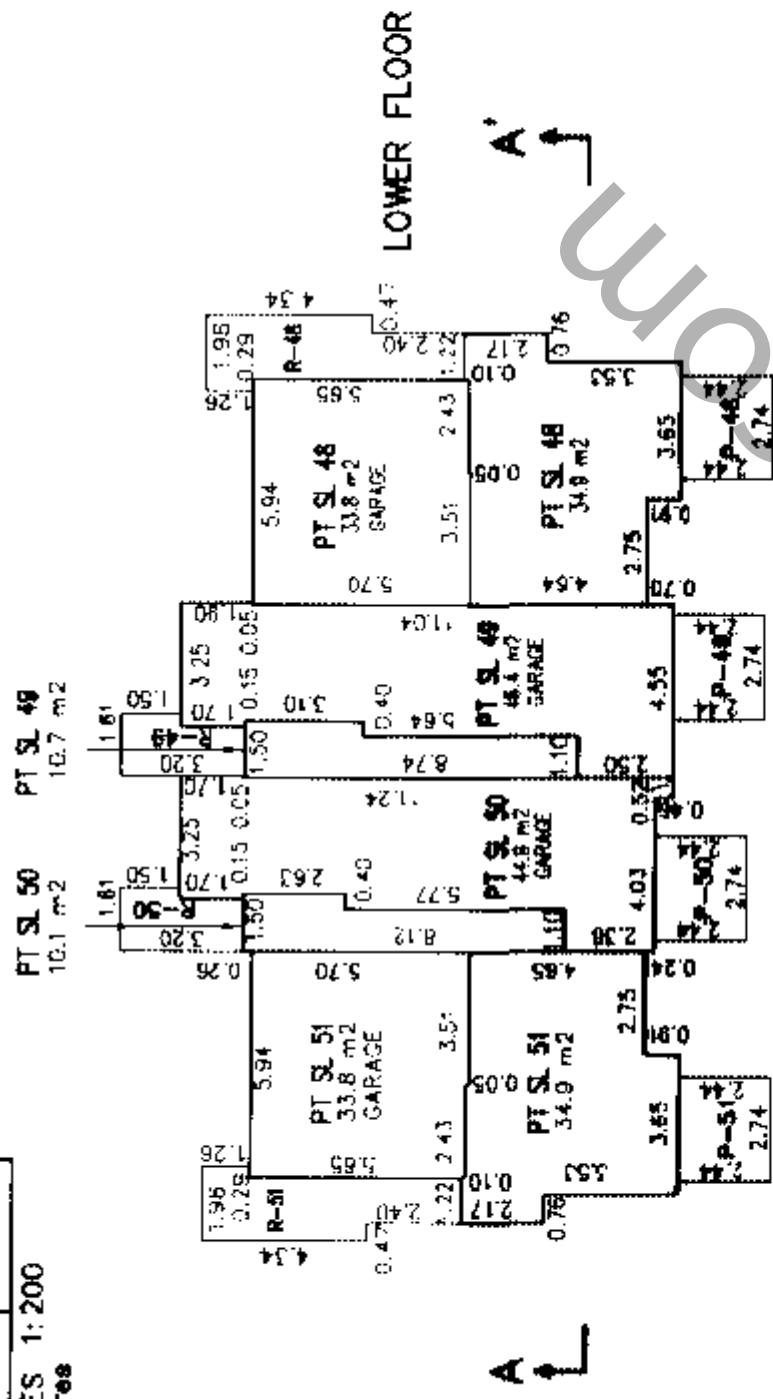


**FLOOR PLANS AND SECTION  
BUILDING 12**

Sheet 17 of 18 Sheets  
**STRATA PLAN BCS 12-16**



GRAPHIC SCALE — METRES 1:200  
All distances are in metres



**SECTION A — A'**

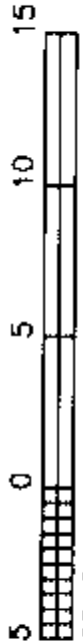
UPPER	PT SL 51	PT SL 50	PT SL 49	PT SL 48
MAIN	PT SL 51	PT SL 50	PT SL 49	PT SL 48
LOWER	PT SL 51	PT SL 50	PT SL 49	PT SL 48

Cameron Land Surveying Ltd.  
B.C. Land Surveyors  
Unit 203-6333-148th St.  
Surrey, B.C. V3S 3C3  
Phone: 597-3777  
Fax: 597-3783

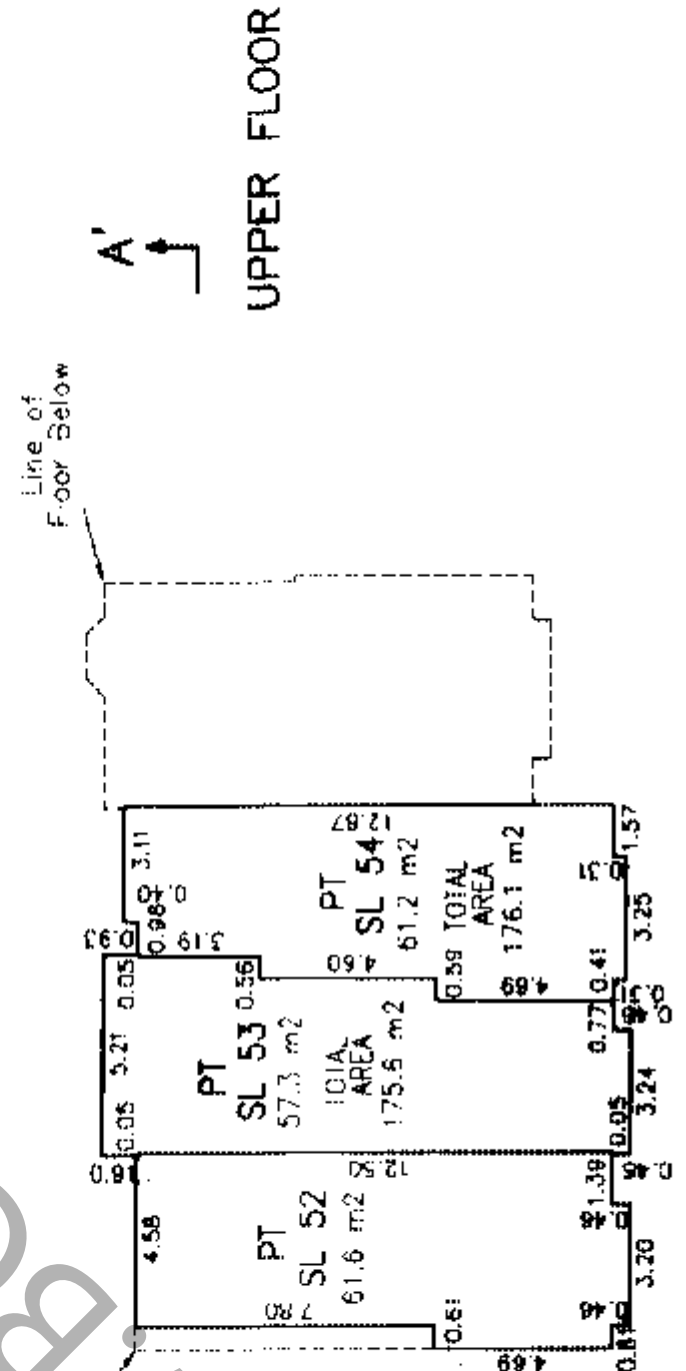
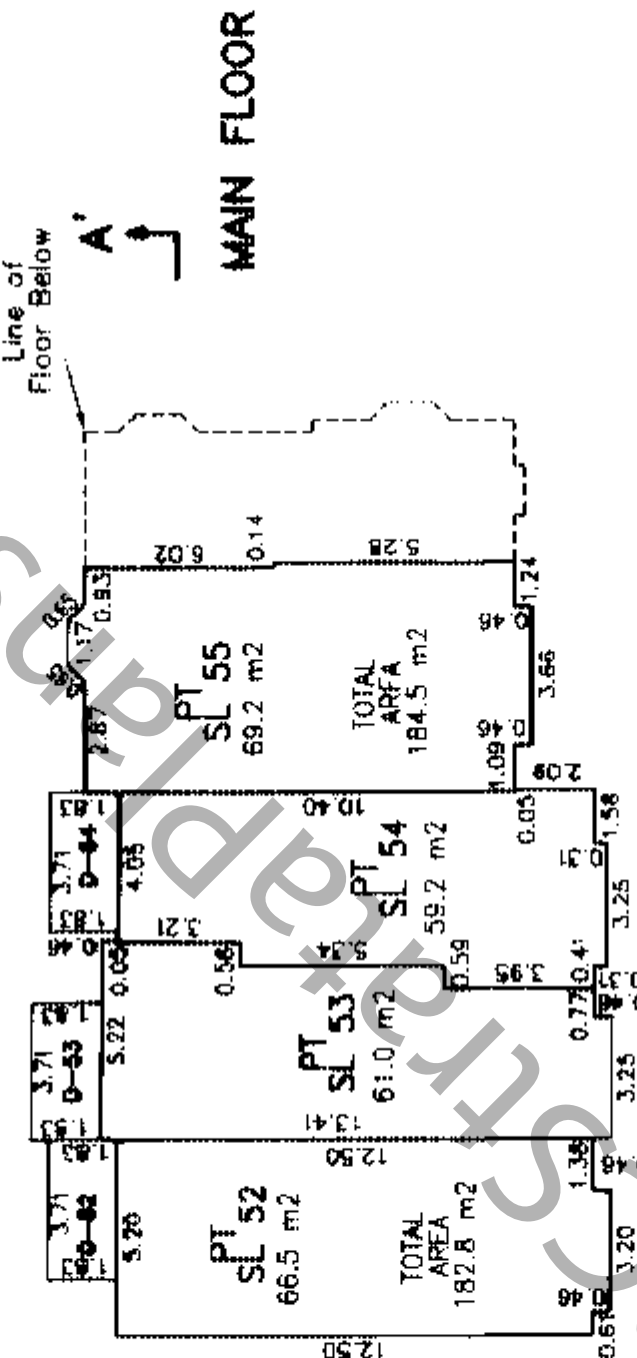
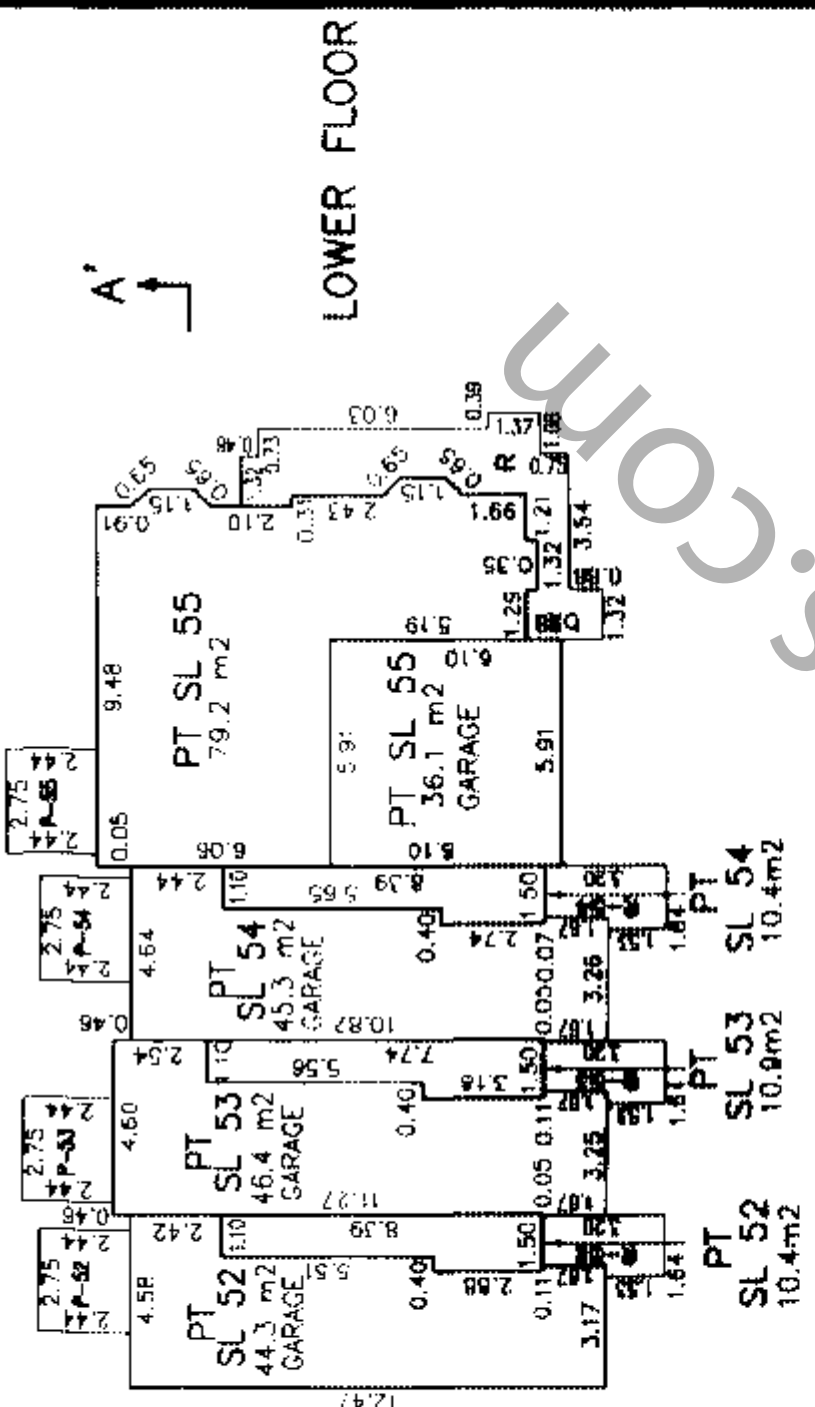
Dated this 18th day of March, 2005.  
*[Signature]*  
File: A-3744-S17

**FLOOR PLANS  
BUILDING 13**

Sheet 18 of 18 Sheets  
**STRATA PLAN BCS 1216**



GRAPHIC SCALE - METRES 1:200  
All distances are in metres



**SECTION A - A'**

UPPER	PT SL 52	PT SL 53	PT SL 54	PT SL 55
MAIN	PT SL 52	PT SL 53	PT SL 54	PT SL 55
LOWER	PT SL 52	PT SL 53	PT SL 54	PT SL 55

Cameron Land Surveying Ltd.  
B.C. Land Surveyors  
Unit 203-6333-148th St.  
Surrey, B.C. V3S 3C3  
Phone: 597-3777  
Fax: 597-3783

Dated this 18th day of March, 2005.

*[Signature]*  
B.C.L.S.  
File: A-3744-S18