

**SIGN UP
NOW**



[Vision](#) [Neighbourhood](#) [Location](#)

MAPLE HEIGHTS

[Homes](#) [Architecture](#) [StreetSide](#)

**NOW
SELLING**

CONTEMPORARY 3 BEDROOM TOWNHOMES
FROM THE LOW \$300'S

104-11305 240th Street, Maple Ridge, British Columbia, Canada [f](#) [t](#) [i](#)

[HOME](#) | [CONTACT](#) | [VISION](#) | [NEIGHBOURHOOD](#) | [LOCATION](#) | [HOMES](#) | [ARCHITECTURE](#) | [STREETSIDE](#) | [SIGN UP](#)

All prices, incentives and promotions are subject to change and can be withdrawn at any time. The developer reserves right to make changes and modifications.
StreetSide Developments (B.C.) Ltd. © Copyright 2015 #310 - 5620 152nd Street, Surrey, BC V3S 3K2 | 778-571-2111 | [Privacy Policy](#) | [Terms of Use](#)



Sometimes It's The Spaces Around Us That Matter Most

That's the inspiration behind Maple Heights. A charming new townhome community designed for the way you really want to live. It's the freedom and security of knowing you own a townhome with plenty of room to grow, play, move and roam. Fresh air and big sky. Lush habitats and open space. Wildflowers and cherry trees. This is life as you always dreamed it could be.

Masterplan

WELCOME TO MAPLE HEIGHTS – A UNIQUE MASTER-PLANNED COMMUNITY GENTLY NESTLED AMONGST THE TREES. BORDERING NEARBY KANAKA CREEK REGIONAL PARK AND ADJACENT TO WALKING TRAILS AND RAINBOW CREEK, MAPLE HEIGHTS IS A DISTINCTIVE COLLECTION OF NATURE-CENTRIC HOMES WHERE GREENERY IS ALL AROUND YOU. DISCOVER LUSH HABITATS WITH NATURAL PONDS, LOGS AND BOULDERS CONNECTED BY A SERIES OF TIMBER BOARDWALKS. CHILDREN CAN EXPLORE THE MOUNTAIN-THEMED PARK WITH NATURAL PLAY STRUCTURES, A CANOPIED SEATING AREA AND OLD-FASHIONED SWING BENCHES – ALL IN A LOVELY LANDSCAPED SETTING.

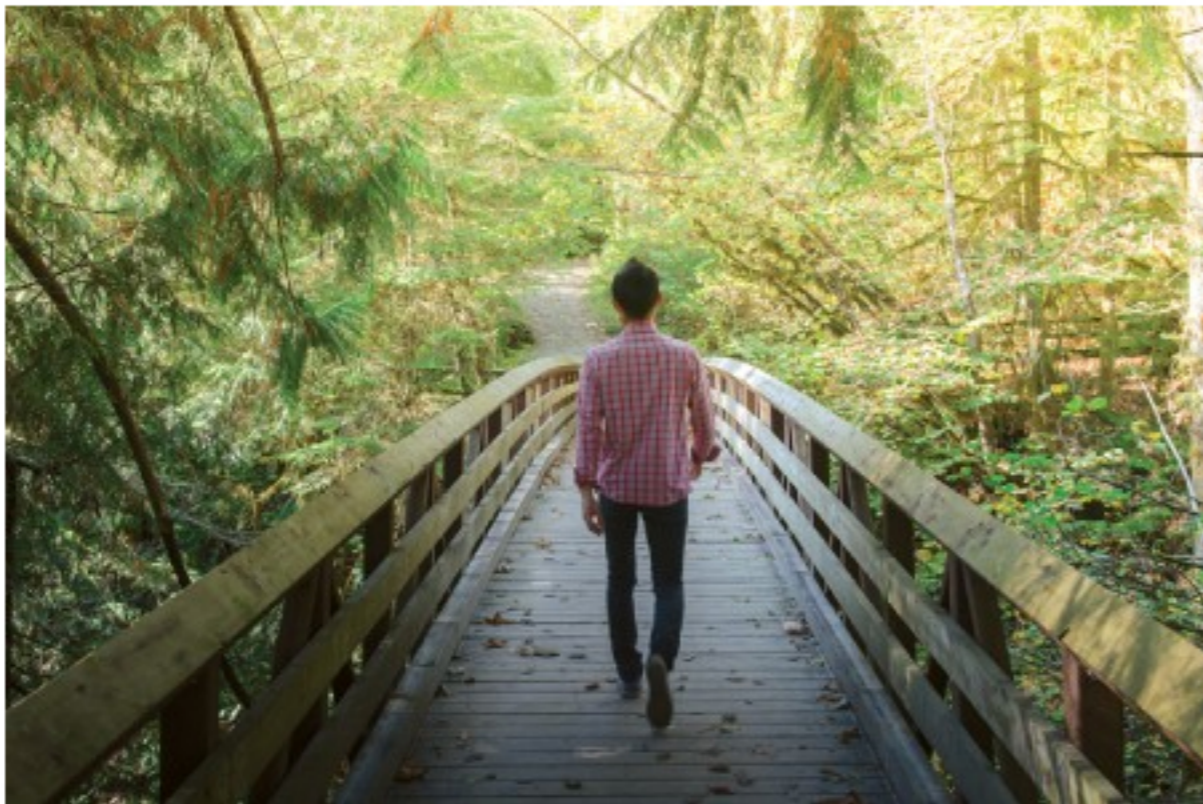


The developer reserves the right to make changes, modifications or substitutions to the building design, specifications, and floorplans should they be necessary. Final floorplans may be a mirror image of the floorplans as shown. Refer to architectural drawings for details on yards, decks and patios. Square footage and room sizes are based on the preliminary survey measurements. Sizes are approximate and actual square footage may vary from the final survey and architectural drawings. E.&O.E.



Laidback Maple Ridge Style, Down to Earth Charm

Laidback and friendly, it's the kind of place you'd want to raise a family. Picture scenic mountains and sparkling lakes alongside all the urban conveniences you've come to depend on. Pack a picnic and the dog and spend a leisurely day at nearby Kanaka Creek, exploring the waterfalls and salmon hatchery. Golden Ears Provincial Park and Alouette Lake or a huge array of hiking trails, along with camping, boating and fishing. Or take in the Circle Farm Tour. Feeling peckish? From fine dining and farm fresh produce, to an ice cream parlor down the street, this is foodie heaven – complete with all the rustic charm the area is famous for.



CENTRALLY LOCATED
IN AN EMERGING,
WALKABLE NEIGHBOURHOOD

YOUR NEW TOWNHOME AT
MAPLE HEIGHTS IS CLOSE TO
AMENITIES AND RESTAURANTS



AS WELL AS SCHOOLS,
SHOPPING AND ONLY 5 MINUTES
TO THE WESTCOAST EXPRESS.

SIGN UP NOW

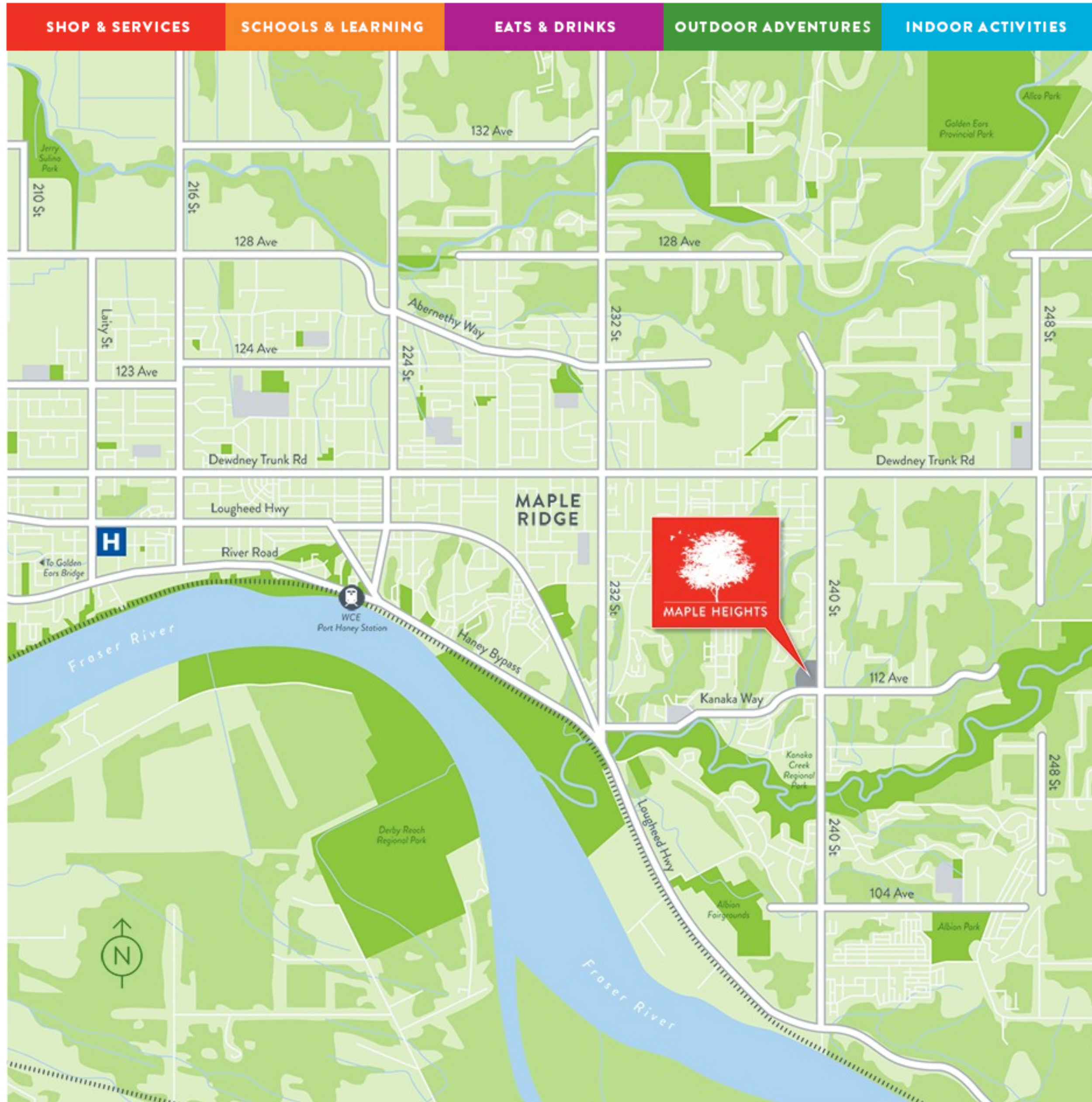


Vision Neighbourhood **Location**

MAPLE HEIGHTS

Homes Architecture StreetSide

All Within Your Neighbourhood



104-11305 240th Street, Maple Ridge, British Columbia, Canada f t i



HOME | CONTACT | VISION | NEIGHBOURHOOD | LOCATION | HOMES | ARCHITECTURE | STREETSIDE | SIGN UP

All prices, incentives and promotions are subject to change and can be withdrawn at any time. The developer reserves right to make changes and modifications. StreetSide Developments (B.C.) Ltd. © Copyright 2015 #310 - 5620 152nd Street, Surrey, BC V3S 3K2 | 778-571-2111 | Privacy Policy | Terms of Use

A QUALICO Company



Phase One Plan



Plan A

3 Bedroom + Rec Room
Levels: Lower, Main, Upper
1758 sq ft
Units: 97, 100, 101, 104

Plan B

Plan C

Plan D

Plan E

Plan F

Plan A | 3 Bedroom + Rec Room | 1758 sq ft

↑ Return to Site Plan ⊕ Enlarge Floorplan Download PDF



The developer reserves the right to make changes, modifications or substitutions to the building design, specifications, and floorplans should they be necessary. Final floorplans may be a mirror image of the floorplans as shown. Refer to architectural drawings for details on yards, decks and patios. Square footage and room sizes are based on the preliminary survey measurements. Sizes are approximate and actual square footage may vary from the final survey and architectural drawings. E.&O.E.

Features & Finishes

↑ Return to Site Plan

OVERVIEW

- West Coast inspired townhomes adjacent to Rainbow Creek in the desirable east Maple Ridge neighbourhood
- Created by StreetSide Developments – a Qualico® company, recognized as the largest integrated Real Estate company in Western Canada with over 60 years of history
- Two and three storey homes featuring rear or front yards and either tandem or side-by-side garages
- West Coast style architecture inspired by its natural setting
- Proud curb appeal with feature roofs, stone accents, wood detailing and a colour palette of rich earthy tones
- Unique site featuring several lush green spaces, meandering pathways and boardwalks, a canopied seating area and outdoor children's play area
- Enjoy entertaining and outdoor living on generous patios and decks with your professionally landscaped yard
- Residents' private clubhouse amenity with fireside lounge and kitchenette

INTERIORS

- Choice of two interior colour schemes by Occupy Design
- All homes feature powder rooms on the main floor
- Airy 9ft ceilings on the main floor
- High quality carpeting in bedrooms and 7½" wide plank laminate flooring throughout main living areas
- Create a comfortable environment with individually controlled electric baseboard heat throughout
- Whirlpool™ front loading washer and dryer (optional upgrade)
- Cozy electric fireplace in the living room (optional upgrade)

KITCHENS

- Classic shaker style or flat panel cabinetry with polished chrome pull hardware
- Solid slab thick polished quartz countertops
- Dramatic full-height ceramic tile kitchen backsplash
- Gourmet appliance package including:
 - Whirlpool™ 30" slide in 5 burner gas range
 - Whirlpool™ 30" EnergyStar stainless steel canopy hood fan
 - Whirlpool™ stainless steel French door EnergyStar refrigerator with bottom mount freezer
 - Whirlpool™ Gold® Series stainless steel dishwasher with sensor cycle
- Panasonic™ Inverter microwave with trim kit (optional upgrade)
- Integrated undercabinet task lighting

- Convenient pantries for extra storage (some homes)
- Generous islands with contemporary pendant lighting
- Double bowl undermount stainless steel sink with Moen™ chrome single lever high arc pull-down faucet

BATHROOMS

- Classic shaker style or flat panel cabinetry with polished chrome pull hardware
- Solid slab thick polished quartz countertops
- Undermount basin sinks
- Single lever polished chrome Moen™ faucets
- 12x24" ceramic wall tile (main bath only)
- High efficiency toilets by Contrac
- Deep soaker tubs with Moen™ polished chrome fixtures
- 12 x 24" porcelain floor tile
- Ensuite Features:
 - Oversized semi-frameless glass shower with porcelain tile surround (some homes)
 - Deep soaker tub/shower combination (some homes)
 - Luxurious dual vanity for added convenience

TECHNOLOGY, CONVENIENCE, SECURITY

- All homes are pre-wired for the in-home security system of your choice
- Convenient multifunction media ports for telephone, data and cable
- Hardwired carbon monoxide and smoke detectors for added safety
- Your home entertainment is provided by Shaw, and includes 1 year pre-paid service of:
 - Shaw Personal TV, including up to 23 HD channels, 41 SD channels and 60 digital music channels
 - Shaw High Speed 25 internet
 - One year rental of an HDPVR or Gateway and WiFi modem
- Comprehensive warranty protection by Travelers Guarantee Company of Canada, providing coverage for:
 - 2-Year Material & Labour Warranty
 - First 12 months – coverage for any defect in materials and labour
 - First 15 months – coverage for any defects in materials and labour in the common property
 - First 24 months – coverage for any defect in materials and labour supplied for the electrical, plumbing and HVAC systems
 - 5-Year Building Envelope Warranty
 - 10-Year Structural Defects Warranty

The developer reserves the right to make changes, modifications or substitutions to the building design, specifications, and floorplans should they be necessary. Final floorplans may be a mirror image of the floorplans as shown. Refer to architectural drawings for details on yards, decks and patios. Square footage and room sizes are based on the preliminary survey measurements. Sizes are approximate and actual square footage may vary from the final survey and architectural drawings. E.&O.E.



SIGN UP NOW

Vision Neighbourhood Location

MAPLE HEIGHTS

Homes Architecture StreetSide



Timeless Architecture Inspired by Nature

Choose from a lovely collection of three bedroom townhomes on 2 or 3 levels that come complete with attached garages and beautifully planted front and back yards. Generous floor plans include spacious open concept living spaces, and feature classic shaker or flat panel cabinetry, full height ceramic tile kitchen backsplashes, thick stone countertops, gleaming stainless steel appliances and professional gas ranges.



A SOPHISTICATED PALETTE OF EITHER WARM WHITES AND MUTED GRAYS OR EARTH TONES GIVE THESE SPACIOUS INTERIORS A CONTEMPORARY FEEL, WHILE NATURAL STONE AND WOOD ACCENTS OUTSIDE CREATE A SENSE OF HERITAGE, THAT PAYS TRIBUTE TO THE EARLY SETTLERS OF MAPLE RIDGE



SIGN UP NOW

Vision Neighbourhood Location

MAPLE HEIGHTS

Homes Architecture **StreetSide**



Rooted in a 60 Plus Year Tradition of Quality and Trust

StreetSide Developments is a division of Qualico®, Western Canada's largest fully integrated, privately owned real estate company. Every year, thousands of Canadian families choose Qualico® to build their homes to exacting standards. Fuelled by creativity and inspired by modern living, StreetSide Developments is an evolution of everything we've learned, with a specific focus on building multifamily homes that fit today's contemporary lifestyles. With a solid reputation for providing superior value, unprecedented customer service and an authentic commitment to the communities we serve, StreetSide Developments is proud to bring you Maple Heights.



A QUALICO Company



**SIGN UP
NOW**



MAPLE HEIGHTS

[Homes](#) [Architecture](#) [StreetSide](#)

[Vision](#) [Neighbourhood](#) [Location](#)

Open Daily 12-5 (except Fridays)

104-11305 240th Street Maple Ridge, BC, Canada



Sales@MapleHeights.ca



604.380.1215

**SIGN UP
NOW**



104-11305 240th Street, Maple Ridge, British Columbia, Canada [f](#) [t](#) [i](#)

[HOME](#) | [CONTACT](#) | [VISION](#) | [NEIGHBOURHOOD](#) | [LOCATION](#) | [HOMES](#) | [ARCHITECTURE](#) | [STREETSIDE](#) | [SIGN UP](#)

All prices, incentives and promotions are subject to change and can be withdrawn at any time. The developer reserves right to make changes and modifications.
StreetSide Developments (B.C.) Ltd. © Copyright 2015 #310 - 5620 152nd Street, Surrey, BC V3S 3K2 | 778-571-2111 | [Privacy Policy](#) | [Terms of Use](#)