

NAVIO at the creek™



MORE BREATHING ROOM

Spacious Parkside Homes on the Seawall

False Creek's largest selection of homes over 900 square feet

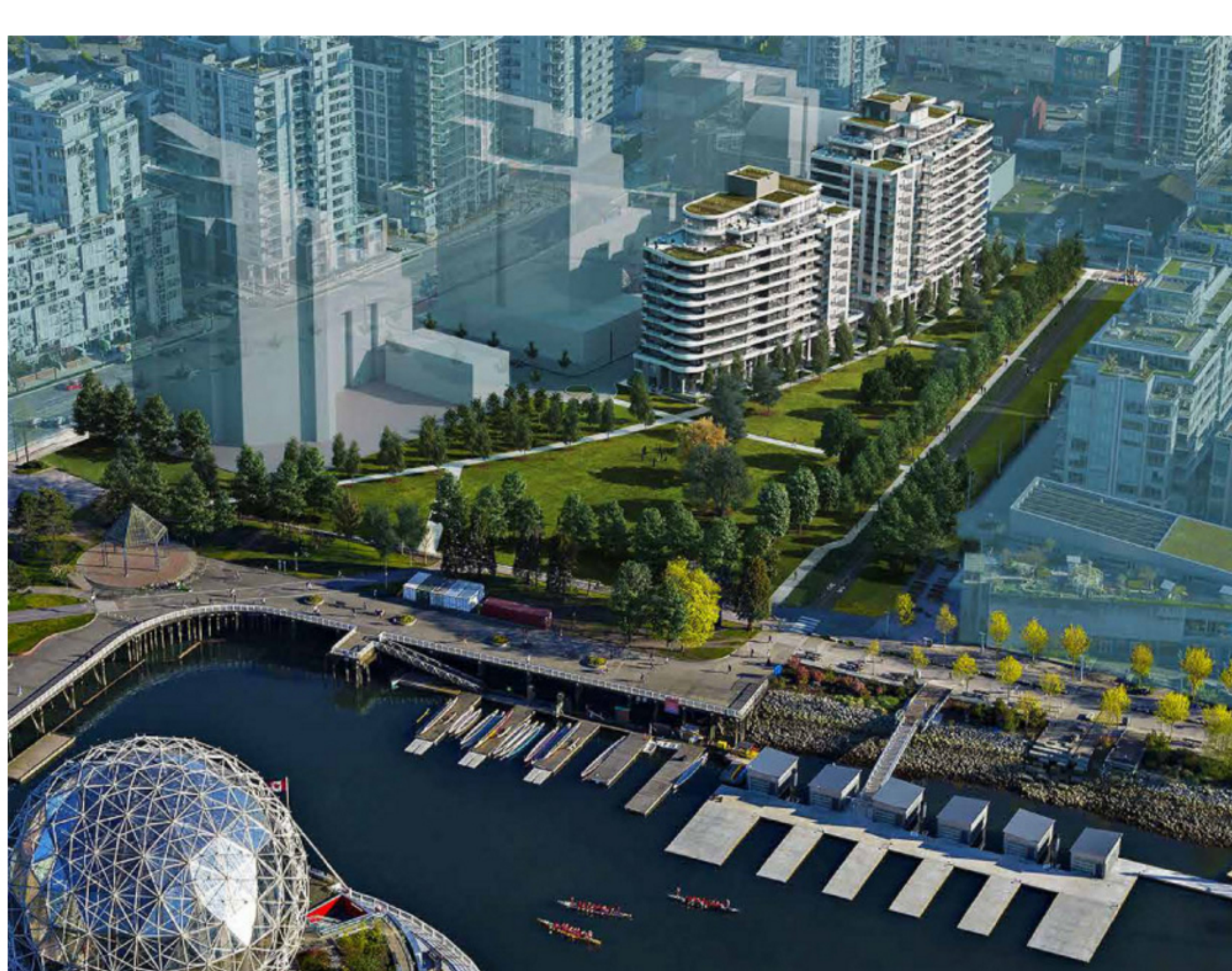
Throughout the world, when people imagine living in Vancouver, they see a walkable waterfront community on a park with views of the city skyline in front of mountains that graze the sky. A location where the finer things in life are at your doorstep and other celebrated neighbourhoods are a walk away. And where an evening ends with the scenic route, following the Seawall home.

People think of Vancouver and imagine The Creek.

[REGISTER](#)

"If there is magic on this planet, it is contained in water."

LOREN EISELEY



Neighbourhood

NAVIO claims an enviable location on the Seawall in one of Vancouver's most desirable neighbourhoods. Southeast False Creek is a vibrant community with its own gourmet grocery store and an eclectic array of specialty shops, cafés, restaurants and entertainment.



[Discover your neighbourhood](#)



[See your community and surrounding area](#)



[View neighbourhood photos](#)

[GO TO NEIGHBOURHOOD](#)



Building

NAVIO's dramatic sweeping balcony and façade expressions emulate the grand proportions of an ocean liner. Together the two 12 and 14-storey buildings create a gentle curve following the shape of the expansive 2.7-acre park that is NAVIO's front yard.

...

[VIEW BUILDING](#)

Homes

NAVIO premium homes offer urban refinement and room to breathe. To accommodate the full spectrum of life's occasions, the large, open floorplans make brilliant use of space.



[Gallery](#)



[Virtual Tours](#)



[Features](#)

[VIEW HOMES](#)

FloorPlans



[VIEW FLOORPLANS](#)

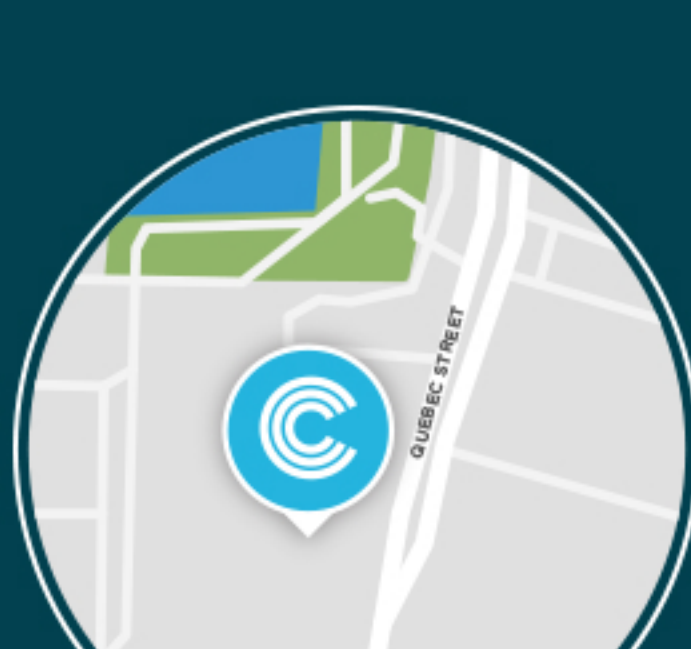
Developer



[VIEW MORE](#)

More Breathing Room

[REGISTER TODAY](#)

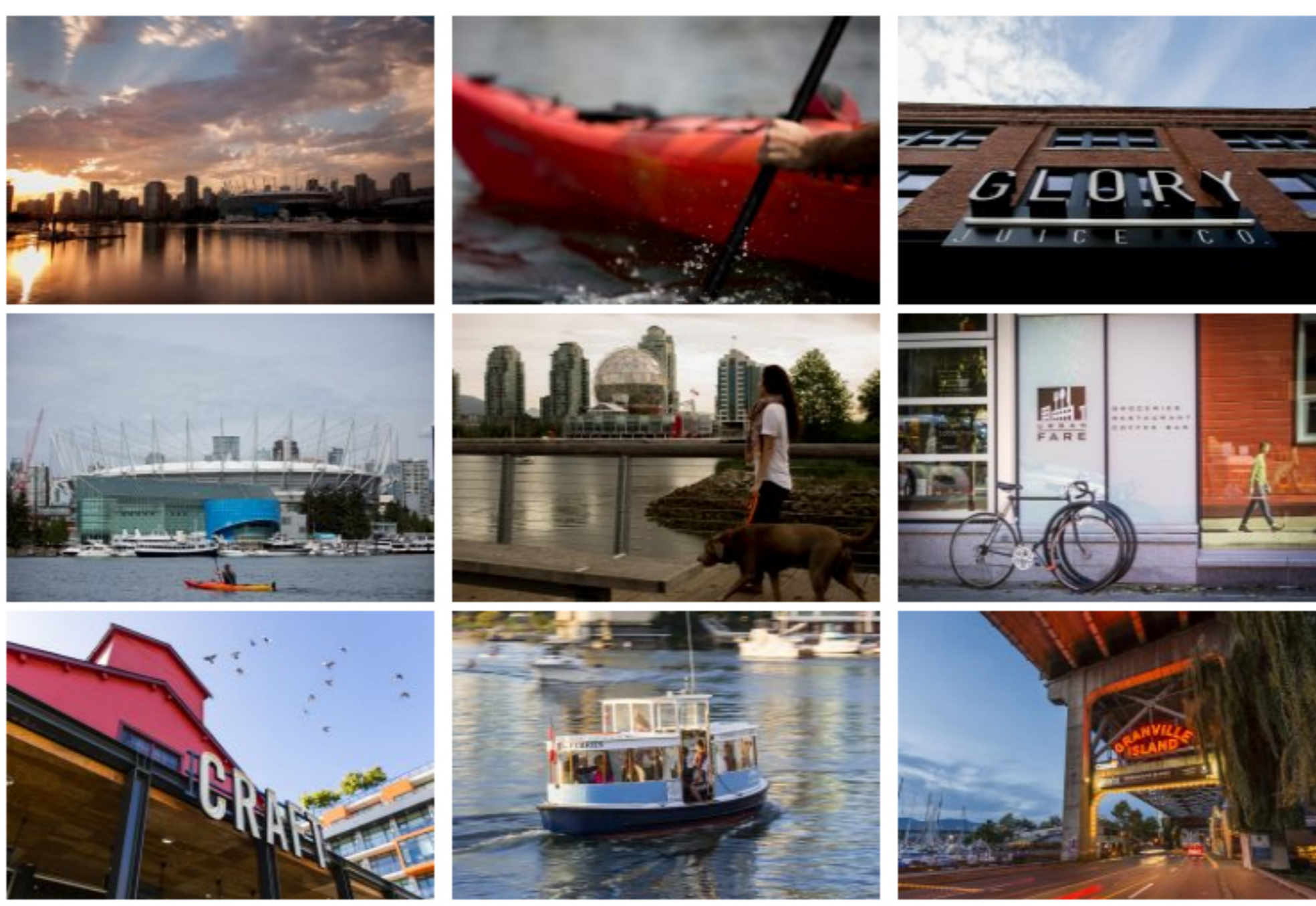


Coming Soon
[REGISTER TODAY](#)



Follow the Seawall Home to The Creek

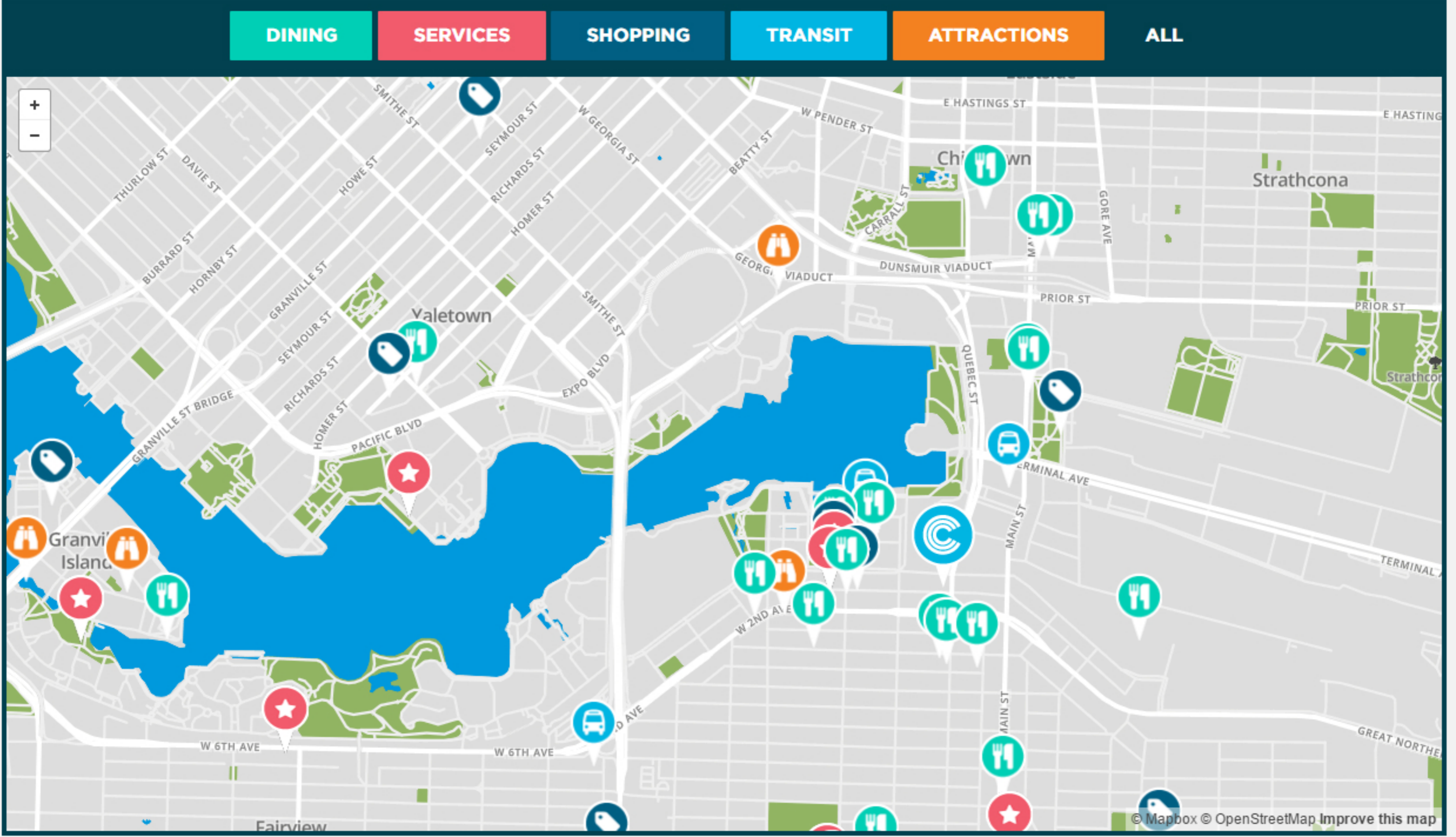
NAVÍO claims an enviable location on the Seawall in one of Vancouver's most desirable neighbourhoods. Southeast False Creek is a vibrant community with its own gourmet grocery store and an eclectic array of specialty shops, cafés, restaurants and entertainment. Quietly removed from the city centre, it's still connected to the best the city has to offer. Enjoy your commute on the Seawall into downtown. Cycle to Granville Island for farm fresh produce. Or stroll to Gastown for an evening out.



Explore The Creek

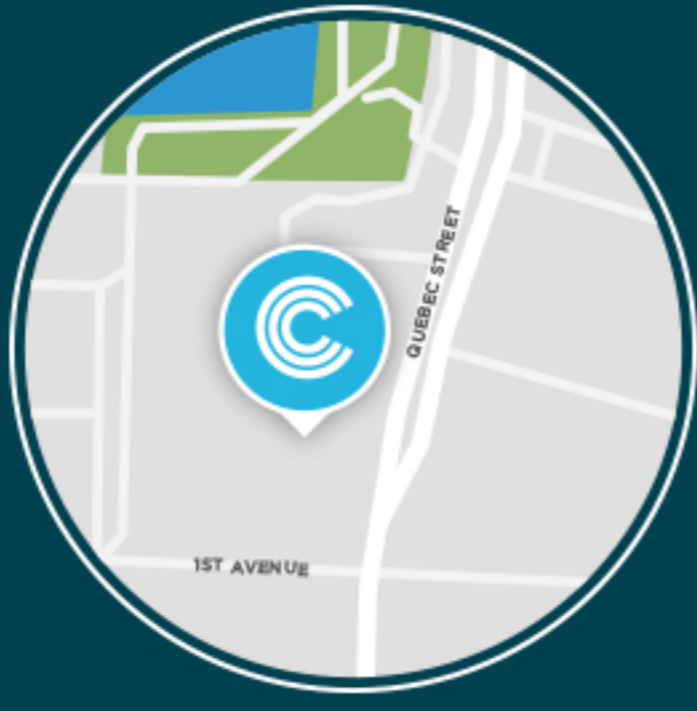


Discover Your Neighbourhood

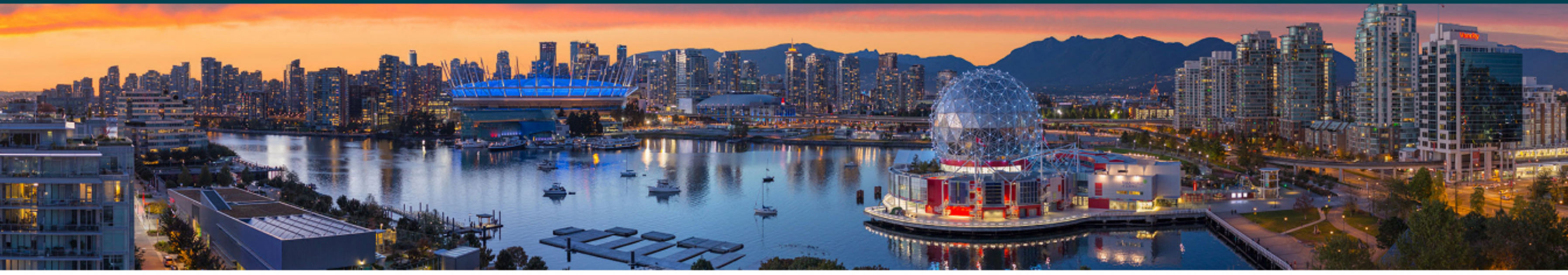


More Breathing Room

REGISTER TODAY



Coming Soon
REGISTER TODAY



On the Water, Inspired by Water

At the edge of False Creek on Vancouver's renowned Seawall, NAVÍO's dramatic sweeping balcony and façade expressions emulate the grand proportions of an ocean liner. Together the two 12 and 14-storey buildings create a gentle curve following the shape of the expansive 2.7-acre park that is NAVÍO's front yard. At the heart of The Creek lies a peaceful, central courtyard NAVÍO overlooks, featuring a lush landscape, water feature and plaza.



View the Virtual Tour of NAVÍO



More Breathing Room

REGISTER TODAY

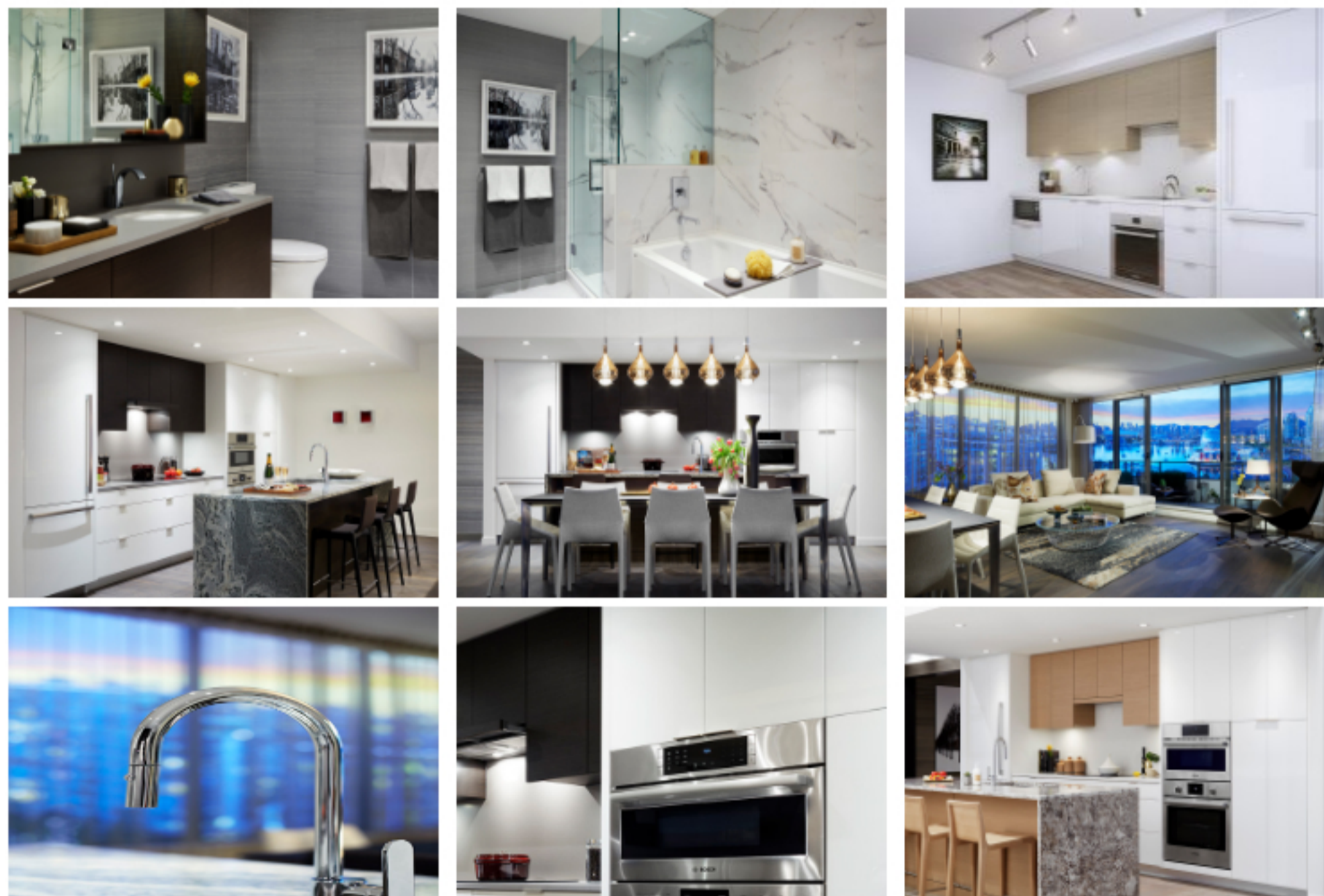


Coming Soon
REGISTER TODAY



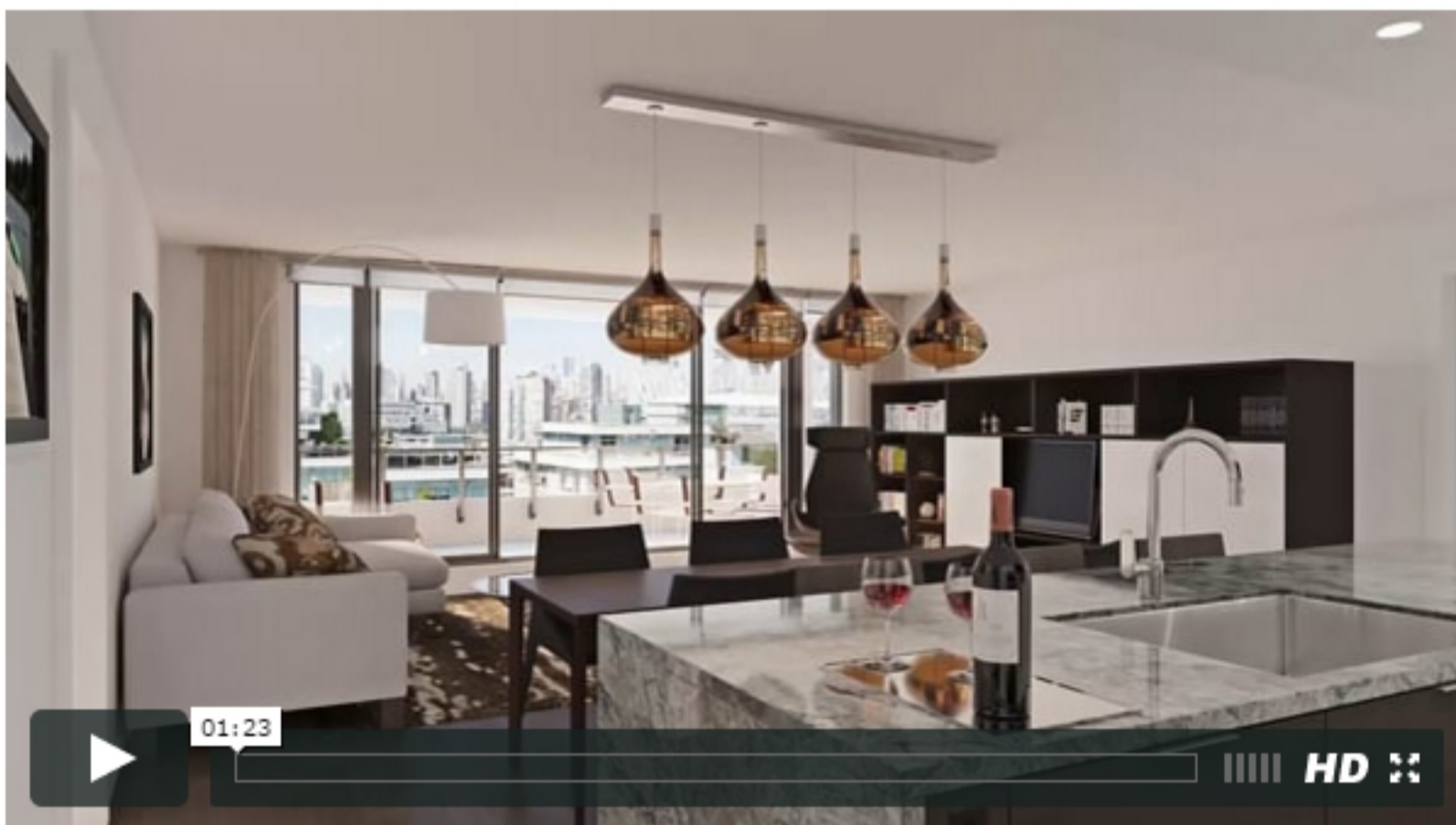
More Breathing Room – Inside and Out

NAVÍO premium homes offer urban refinement and room to breathe. To accommodate the full spectrum of life's occasions, the large, open floorplans make brilliant use of space. The colour palette and rich natural materials are inspired by the waterfront and park setting. Large windows bathe your rooms in sunlight and air-conditioning enhances your comfort. Celebrate outdoor living all year round with generous balconies, terraces and patios sized for entertaining.



Virtual Tours

2 BEDROOM



TOWNHOME



Features

DOWNLOAD PDF FOR FULL LIST OF FEATURES AND FINISHES [↓](#)

More Breathing Room

REGISTER TODAY



Coming Soon
REGISTER TODAY



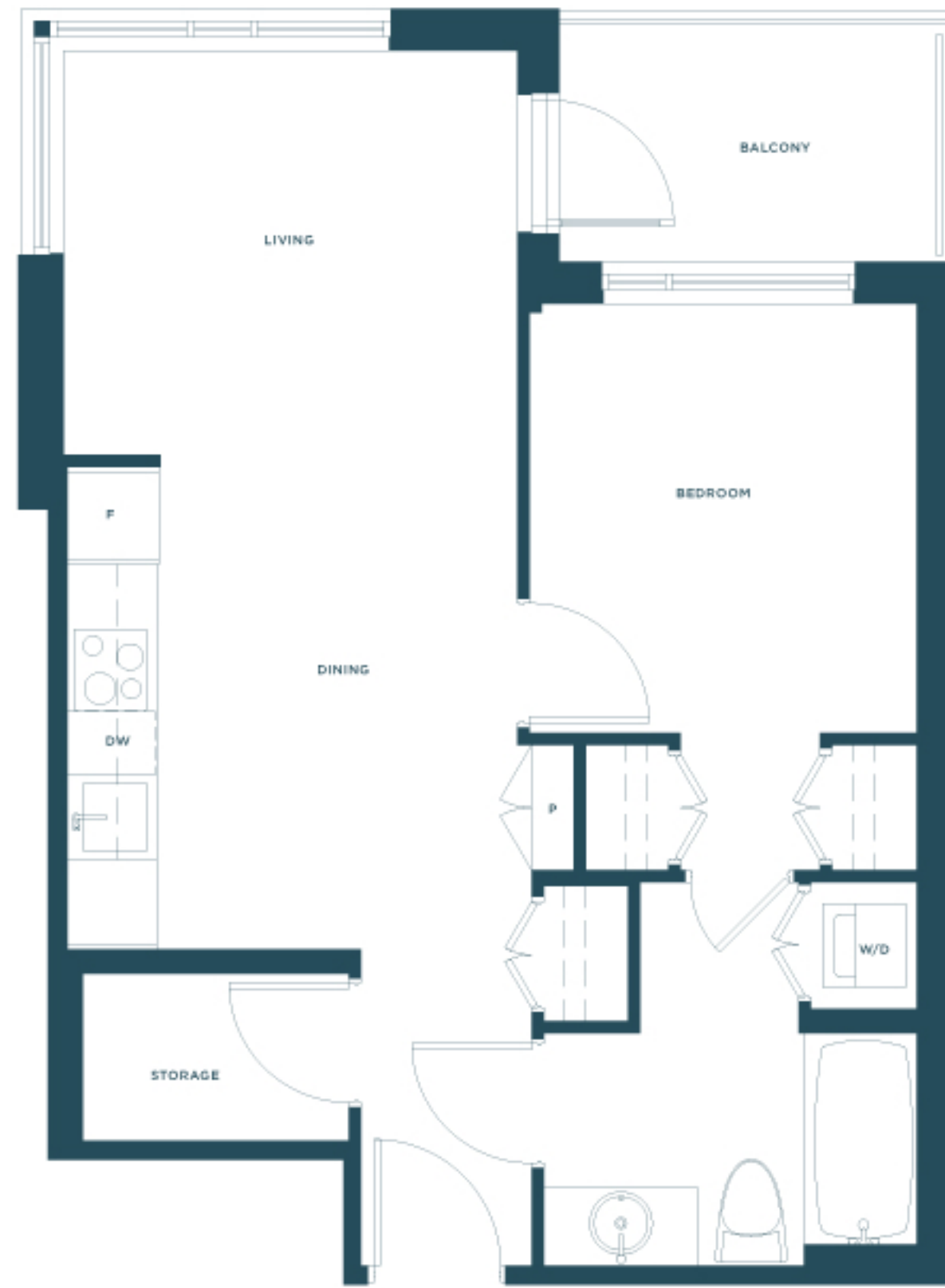
NAVÍO™ SOUTH NAVÍO™ NORTH

A1 | 01 1 Bedroom
Interior | 562 Sq.Ft.
Exterior | 53 Sq.Ft.

DOWNLOAD [FEATURES PDF](#) ↓
DOWNLOAD [FLOORPLAN PDF](#) ↓

- 1 Bedroom
- 1 Bedroom + Den
- 2 Bedroom
- Townhomes
- Penthouse Collection

A1	A2	A3
A4		



More Breathing Room

[REGISTER TODAY](#)



Coming Soon
[REGISTER TODAY](#)

This is not an offering for sale. Such offering may be made by Disclosure Statement only, March 2016. E.&O.E. Concert Realty Services Ltd. Concert reserves the right to make changes to floor plans, project design, specifications, finishes and features. Suite sizes, dimension and floor plan layouts are approximate and may vary. Views, renderings and virtual tours shown are for general illustration purposes only and should not be relied upon to accurately represent the actual views that may be available or the actual completed building.

Copyright 2016 Concert Realty Services Ltd. CONCERT, the CONCERT Design, the TRIGRAM design, and all names of Concert's residential properties (and all associated taglines), are trademarks of Concert Properties Ltd., and where applicable are used under license by Concert Realty Services Ltd. and/or Concert Real Estate Corporation. [Privacy](#) | [Terms of Use](#)

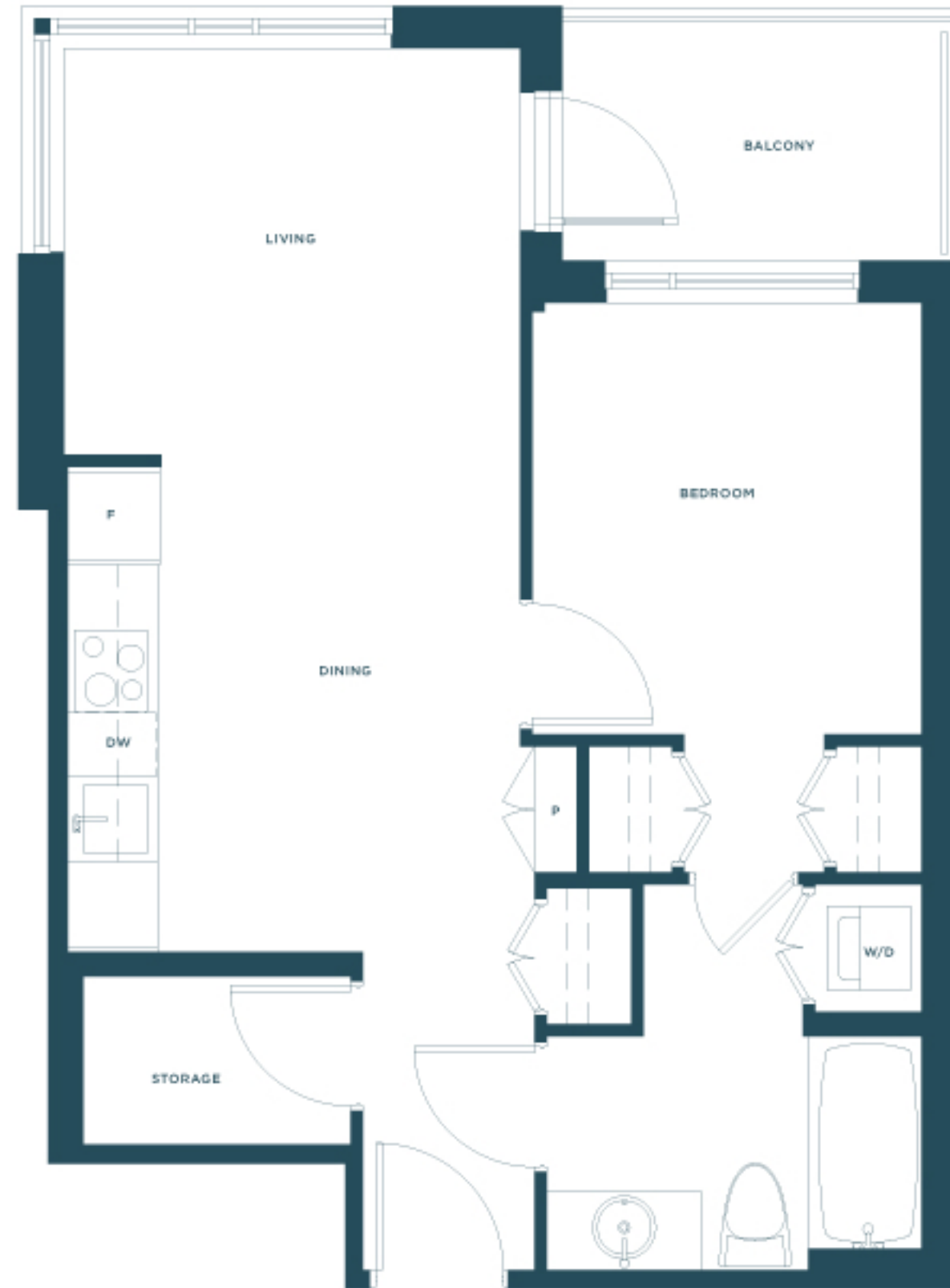


NAVÍO™ SOUTH NAVÍO™ NORTH

A1 | **01** 1 Bedroom
Interior | 562 Sq.Ft.
Exterior | 53 Sq.Ft.

DOWNLOAD [FEATURES PDF](#) ↓
DOWNLOAD [FLOORPLAN PDF](#) ↓

- 1 Bedroom
 - 1 Bedroom + Den
 - 2 Bedroom
 - Townhomes
 - Penthouse Collection
- | | | |
|-----------|----|----|
| A1 | A2 | A3 |
| A4 | | |



Level 3-12

More Breathing Room

REGISTER TODAY



Coming Soon
REGISTER TODAY

This is not an offering for sale. Such offering may be made by Disclosure Statement only, March 2016. E.&O.E. Concert Realty Services Ltd. Concert reserves the right to make changes to floor plans, project design, specifications, finishes and features. Suite sizes, dimension and floor plan layouts are approximate and may vary. Views, renderings and virtual tours shown are for general illustration purposes only and should not be relied upon to accurately represent the actual views that may be available or the actual completed building.

Copyright 2016 Concert Realty Services Ltd. CONCERT, the CONCERT Design, the TRIGRAM design, and all names of Concert's residential properties (and all associated taglines), are trademarks of Concert Properties Ltd., and where applicable are used under license by Concert Realty Services Ltd. and/or Concert Real Estate Corporation. [Privacy](#) | [Terms of Use](#)



More Trust — a Developer with a Difference

Founded in BC in 1989, Concert is an award-winning real estate enterprise with a well-earned reputation as one of the country's most respected developers. Concert is nationally recognized for superior standards of construction, exceptional customer service and an unwavering commitment to building strong and sustainable communities. Committed to integrity, service and sustainability in all that we do, we are "a developer with a difference," and that difference elevates our communities and our value.



More Breathing Room

REGISTER TODAY



Coming Soon
REGISTER TODAY