

**STRATA PLAN OF LOT A SECTION 20  
TOWNSHIP 12 NEW WESTMINSTER  
DISTRICT PLAN EPP57087**

Sheet 1 of 8 Sheets  
**STRATA PLAN EPS4738**

City of Maple Ridge B.C.G.S. 92G.028



SCALE - 1 : 500  
All distances are in metres

The intended plot size of this plan if 280mm in width by 432mm in height (size B) when plotted at a scale of 1:500

**Legend:**

- ⊕ Denotes common property
- LCP Denotes limited common property
- PT Denotes Part
- SL Denotes Strata Lot
- m<sup>2</sup> Denotes Square Metres
- Wt Denotes witness
- Denotes standard iron post found
- ⊙ Denotes control monument found
- ⓔ Denotes electrical room

Note: This plan shows one or more witness posts which are not set on the true corner(s).  
Witness posts are set along the production of a boundary unless otherwise noted.  
Some symbols and lines have been exaggerated for clarity.

CIVIC ADDRESS:

22562 121st Avenue  
Maple Ridge, B.C.

84H0012  
Datum: NAD83 (CSRS) UTM Zone 10 4.0.0.BC.1.GVRD  
UTM Northing: 5,452,251.715  
UTM Easting: 529,288,602  
Point combined factor: 0.9996073  
Estimated horizontal positional accuracy: 0.02 m

84H9990  
Datum: NAD83 (CSRS) UTM Zone 10 4.0.0.BC.1.GVRD  
UTM Northing: 5,452,248,564  
UTM Easting: 529,565.004  
Point combined factor: 0.9996072  
Estimated horizontal positional accuracy: 0.02 m

Integrated Survey Area No. 36

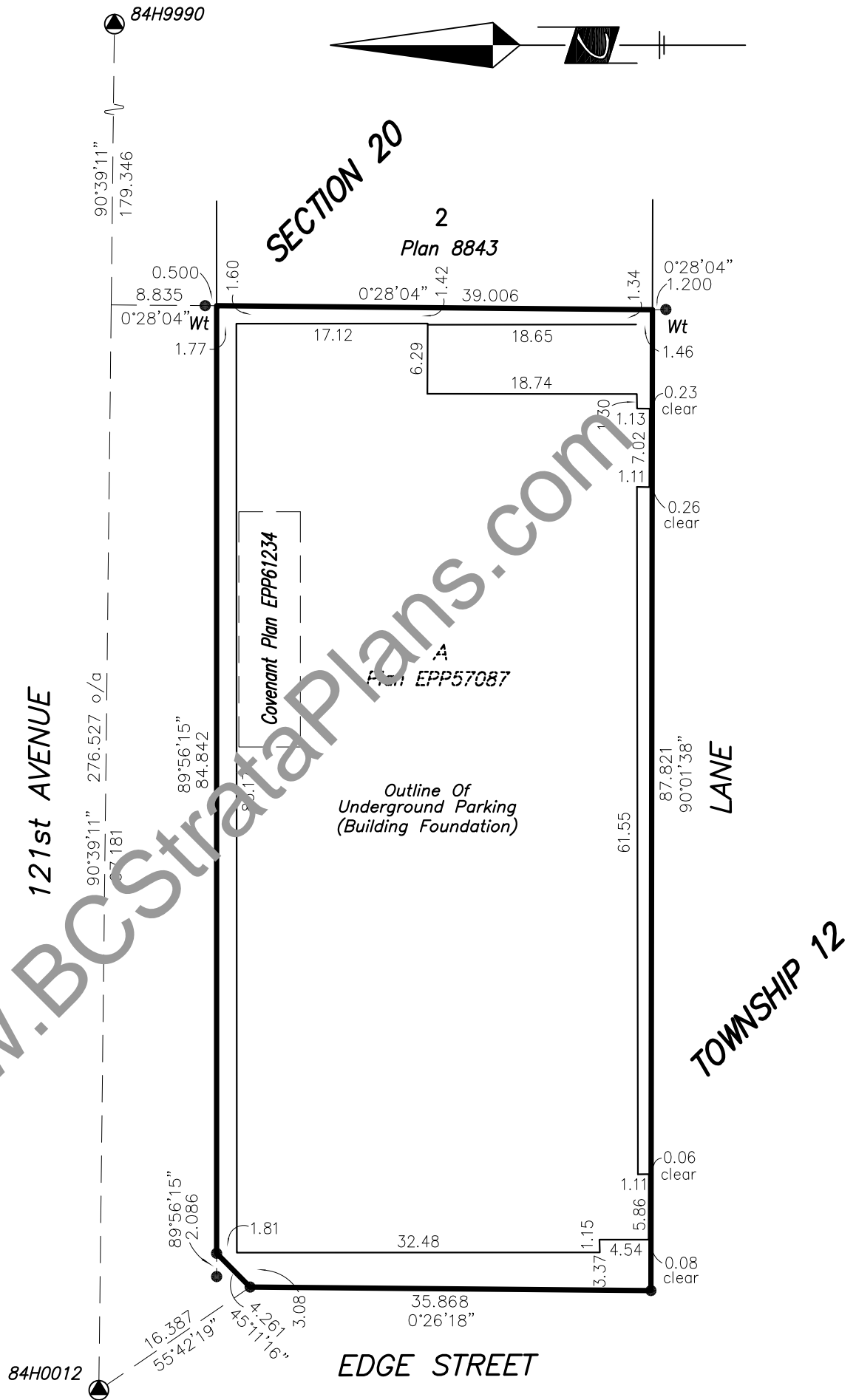
City of Maple Ridge, NAD83 (CSRS) 4.0.0.BC.1.GVRD

Grid Bearings are derived from observations between Control Monument 84H0012 and 84H9990

The UTM co-ordinates and estimated horizontal positional accuracy achieved are derived from the MASCOT published coordinates and standard deviations for geodetic control monuments 84H0012 and 84H9990.

This plan shows horizontal ground-level distances unless otherwise specified. To compute grid distances, multiply ground-level distances by the average combined factor of 0.9996073 which has been derived from geodetic control monument 84H0012

Cameron Land Surveying Ltd.  
B.C. Land Surveyors  
Unit 206 - 16055 Fraser Highway  
Surrey, B.C. V4N 0G2  
Phone: 604-597-3777  
File: 5413-FINAL-STRATA



**NOTES:**

- Strata lot boundaries are defined as:
  - the centre line of all demising walls between strata lots.
  - the exterior face of concrete or plywood sheeting of exterior walls between strata lots and common areas.

Offsets shown are to the exterior foundation wall unless otherwise indicated.

All angles deflect by multiples of 45 degrees unless otherwise noted.

The buildings in this strata plan have not been previously occupied.

The building shown hereon is within the external boundaries of the land that is the subject of the strata plan.

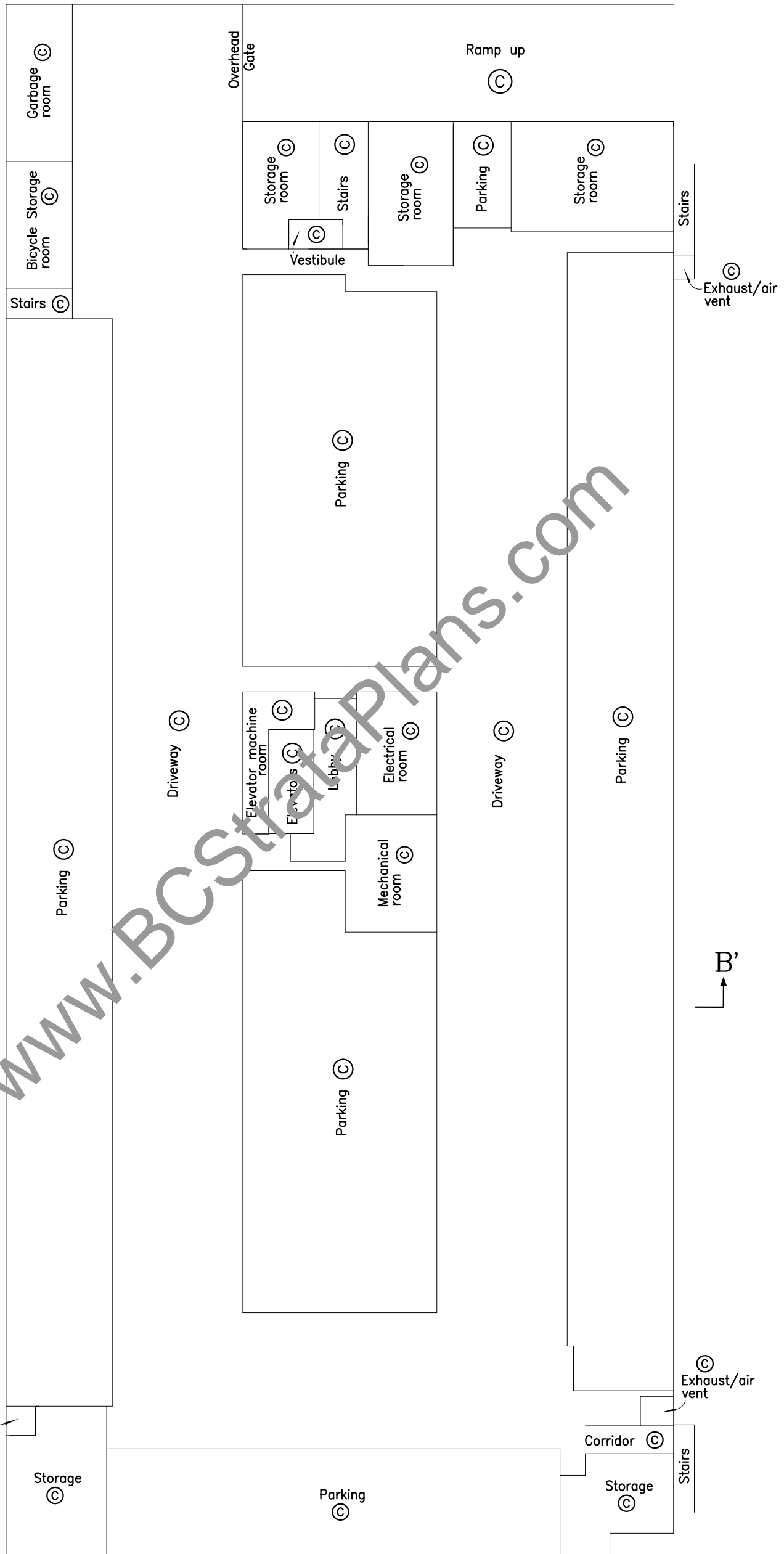
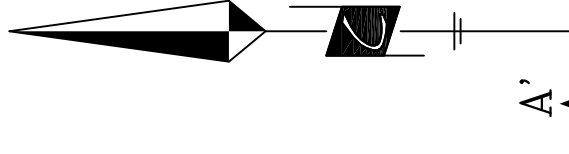
The field survey represented by this plan was completed on the 4th day of December, 2017  
Sean Costello, BCLS 900

# UNDERGROUND PARKING GARAGE



SCALE - 1 : 250  
All distances are in metres

The intended plot size of this plan is 280mm in width by 432mm in height (size B) when plotted at a scale of 1:250



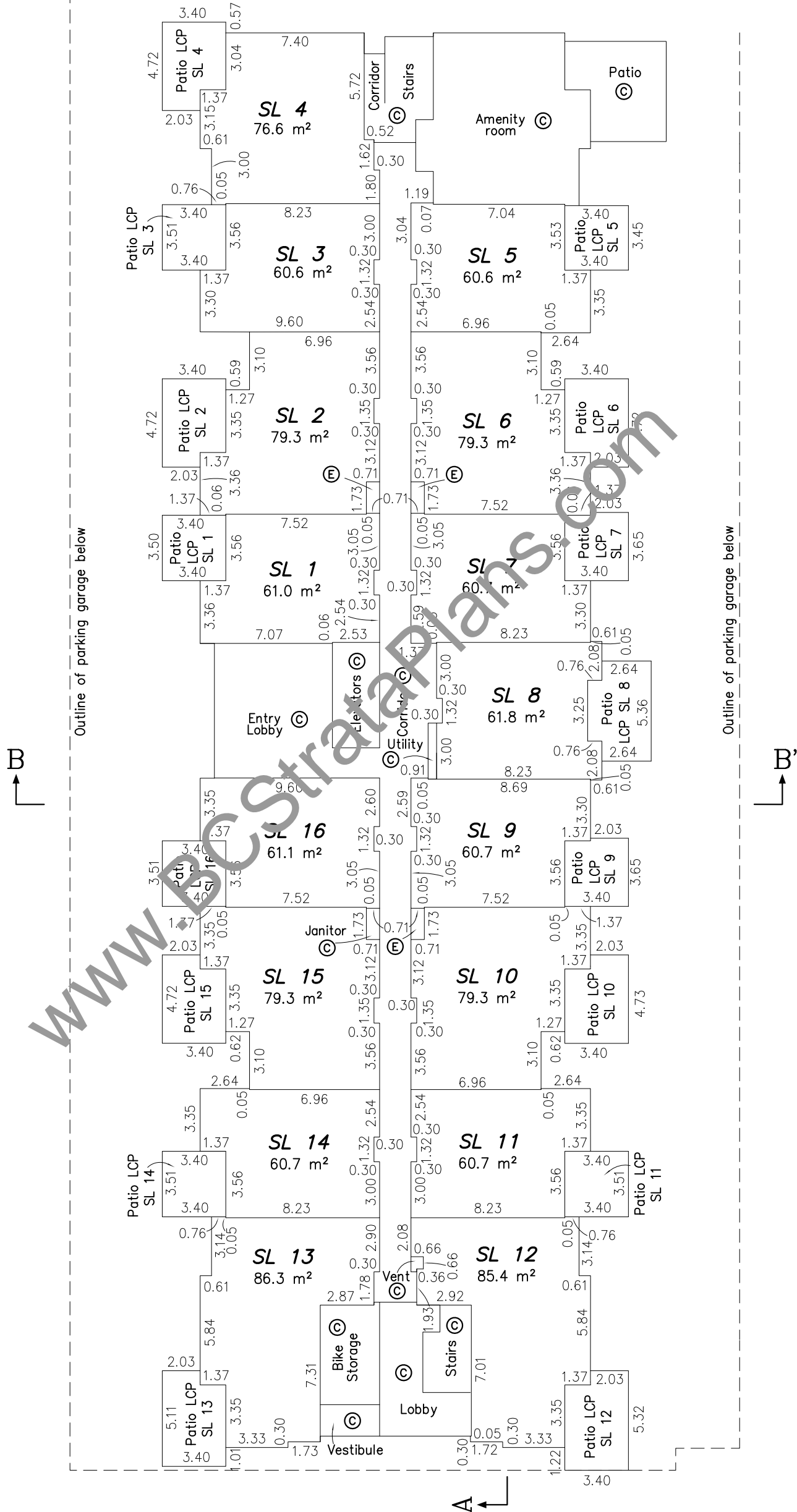
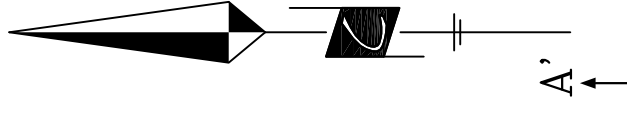
**FIRST FLOOR**



SCALE - 1 : 250

All distances are in metres

The intended plot size of this plan is 280mm in width by 432mm in height (size B) when plotted at a scale of 1:250



**METHOD OF MEASURE:**

- STRATA LOT BOUNDARIES ARE DEFINED AS:
- THE CENTER LINE OF DEMISING WALLS BETWEEN STRATA LOTS.
  - THE EXTERIOR FACE OF DEMISING WALLS BETWEEN STRATA LOTS AND COMMON AREAS.

Cameron Land Surveying Ltd.  
B.C. Land Surveyors  
Unit 206 - 16055 Fraser Highway  
Surrey, B.C. V4N 0G2  
Phone: 604-597-3777  
Fax: 604-597-3783

Sean Costello, BCLS  
December 4th, 2017.

This plan lies within the Greater Vancouver Regional District

File: 5413-FINAL-STRATA

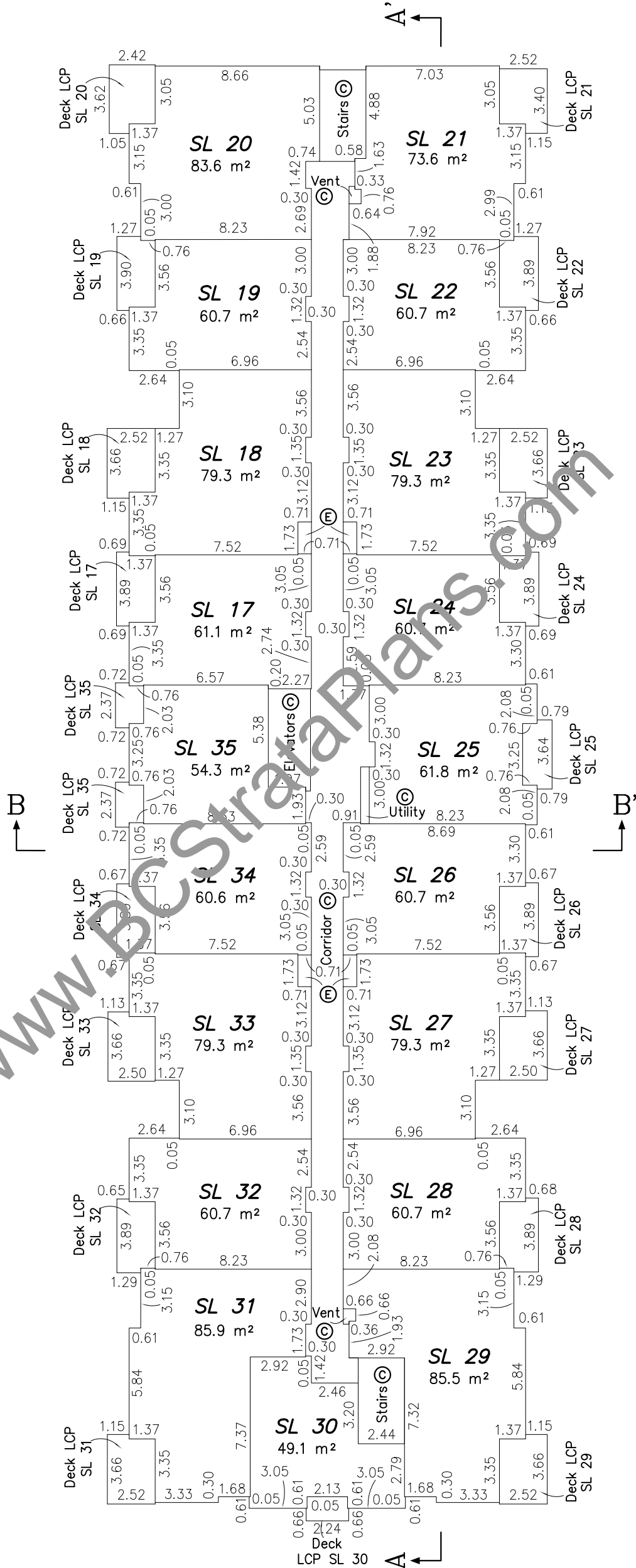
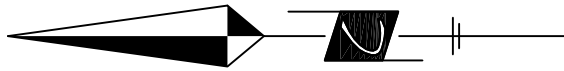
**SECOND FLOOR**



SCALE - 1 : 250

All distances are in metres

The intended plot size of this plan is 280mm in width by 432mm in height (size B) when plotted at a scale of 1:250



**METHOD OF MEASURE:**

- STRATA LOT BOUNDARIES ARE DEFINED AS:
  - THE CENTER LINE OF DEMISING WALLS BETWEEN STRATA LOTS.
  - THE EXTERIOR FACE OF DEMISING WALLS BETWEEN STRATA LOTS AND COMMON AREAS.

Cameron Land Surveying Ltd.  
B.C. Land Surveyors  
Unit 206 - 16055 Fraser Highway  
Surrey, B.C. V4N 0G2  
Phone: 604-597-3777  
Fax: 604-597-3783

Sean Costello, BCLS  
December 4th, 2017.

This plan lies within the Greater Vancouver Regional District

File: 5413-FINAL-STRATA

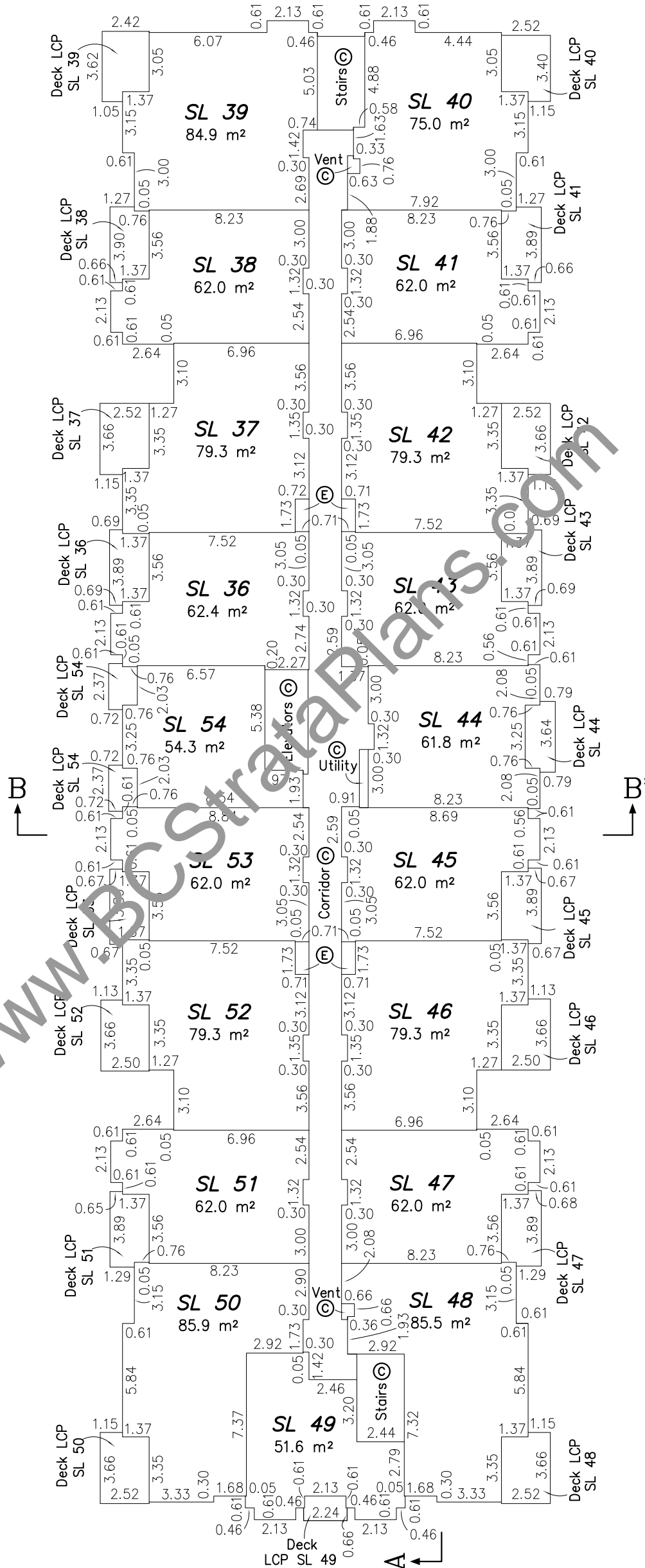
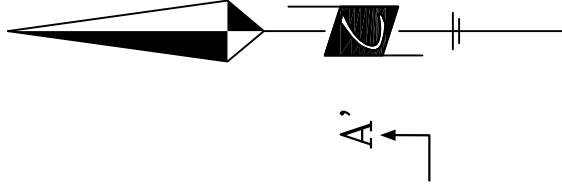
**THIRD FLOOR**



SCALE - 1 : 250

All distances are in metres

The intended plot size of this plan is 280mm in width by 432mm in height (size B) when plotted at a scale of 1:250



**METHOD OF MEASURE:**

- STRATA LOT BOUNDARIES ARE DEFINED AS:
  - THE CENTER LINE OF DEMISING WALLS BETWEEN STRATA LOTS.
  - THE EXTERIOR FACE OF DEMISING WALLS BETWEEN STRATA LOTS AND COMMON AREAS.

Cameron Land Surveying Ltd.  
B.C. Land Surveyors  
Unit 206 - 16055 Fraser Highway  
Surrey, B.C. V4N 0G2  
Phone: 604-597-3777  
Fax: 604-597-3783

Sean Costello, BCLS  
December 4th, 2017.

This plan lies within the Greater Vancouver Regional District

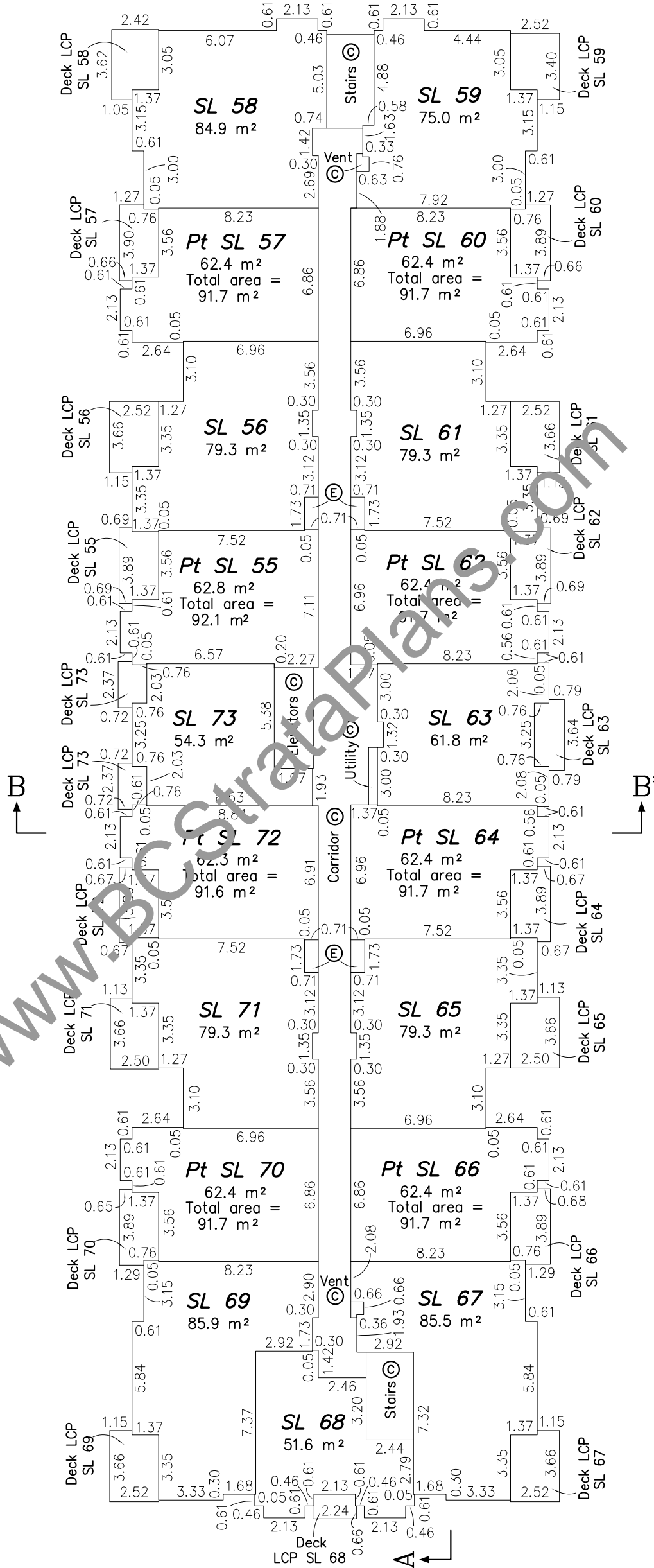
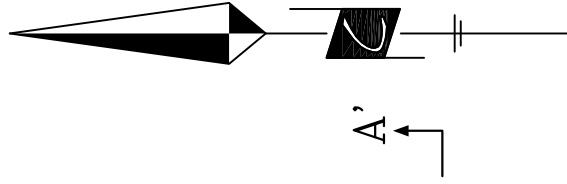
File: 5413-FINAL-STRATA

**FOURTH FLOOR**



SCALE - 1 : 250  
All distances are in metres

The intended plot size of this plan is 280mm in width by 432mm in height (size B) when plotted at a scale of 1:250



**METHOD OF MEASURE:**

- STRATA LOT BOUNDARIES ARE DEFINED AS:
  - THE CENTER LINE OF DEMISING WALLS BETWEEN STRATA LOTS.
  - THE EXTERIOR FACE OF DEMISING WALLS BETWEEN STRATA LOTS AND COMMON AREAS.

Cameron Land Surveying Ltd.  
B.C. Land Surveyors  
Unit 206 - 16055 Fraser Highway  
Surrey, B.C. V4N 0G2  
Phone: 604-597-3777  
Fax: 604-597-3783

Sean Costello, BCLS  
December 4th, 2017.

This plan lies within the Greater Vancouver Regional District

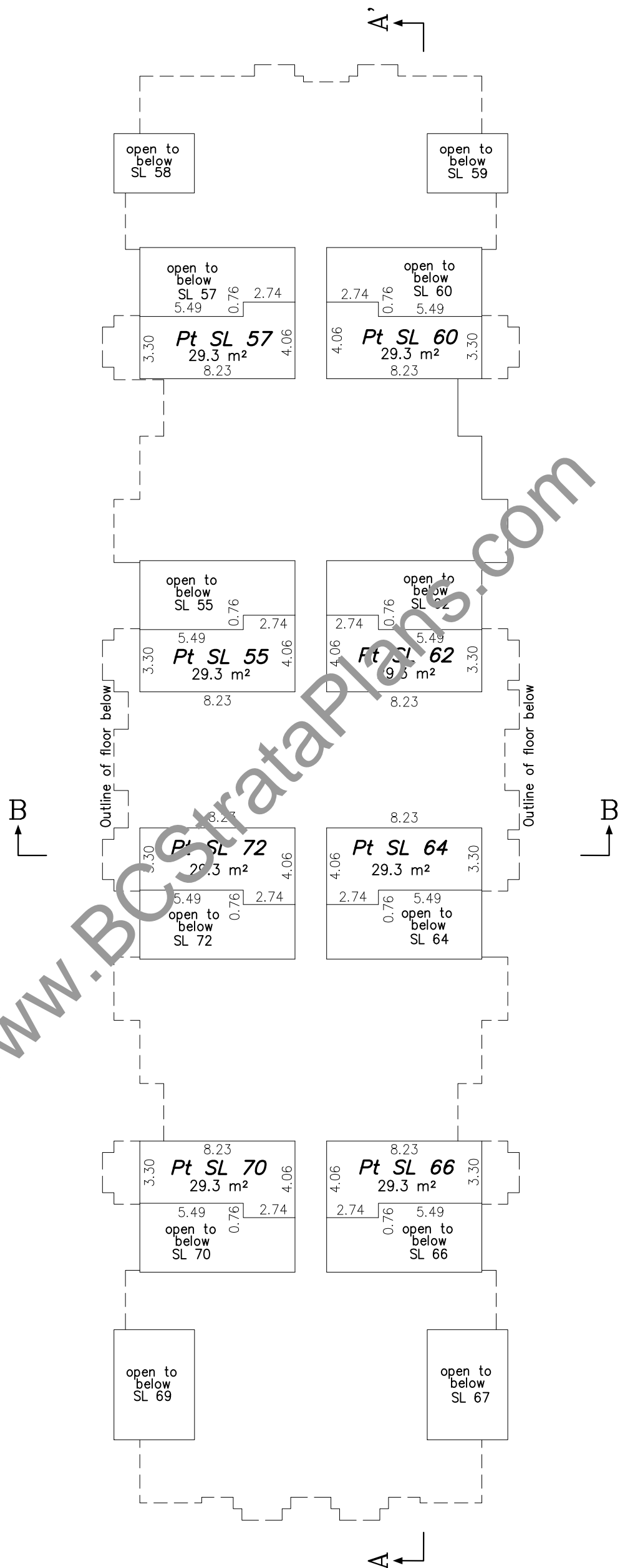
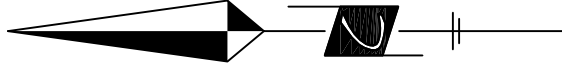
File: 5413-FINAL-STRATA

**MEZZANINE LEVEL**



SCALE - 1 : 250  
All distances are in metres

The intended plot size of this plan is 280mm in width by 432mm in height (size B) when plotted at a scale of 1:250



**METHOD OF MEASURE:**

STRATA LOT BOUNDARIES ARE DEFINED AS:  
- THE CENTER LINE OF DEMISING WALLS BETWEEN STRATA LOTS.  
- THE EXTERIOR FACE OF DEMISING WALLS BETWEEN STRATA LOTS AND COMMON AREAS.

Cameron Land Surveying Ltd.  
B.C. Land Surveyors  
Unit 206 - 16055 Fraser Highway  
Surrey, B.C. V4N 0G2  
Phone: 604-597-3777  
Fax: 604-597-3783

Sean Costello, BCLS  
December 4th, 2017.

This plan lies within the Greater Vancouver Regional District

File: 5413-FINAL-STRATA

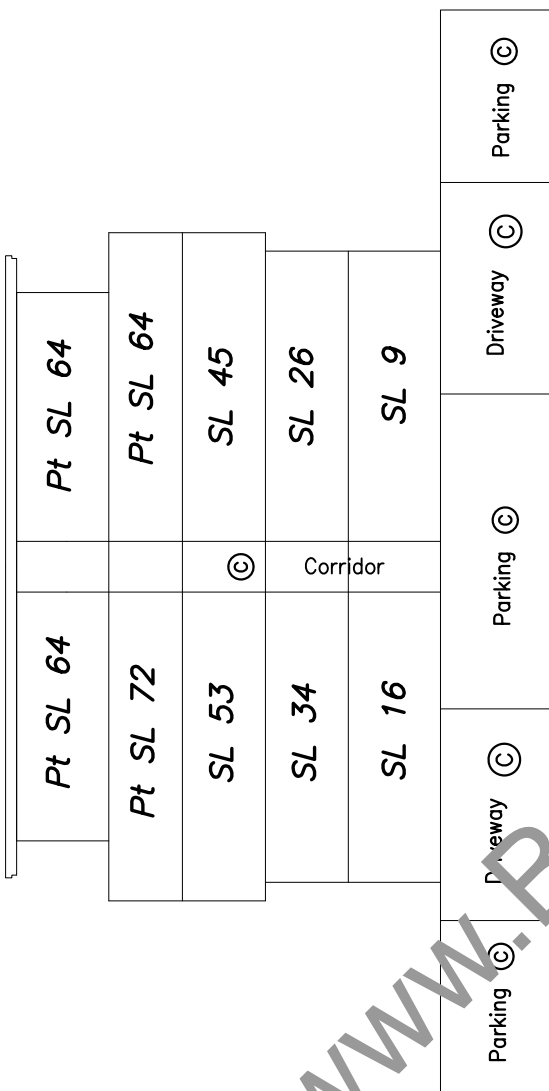
**SECTIONS**



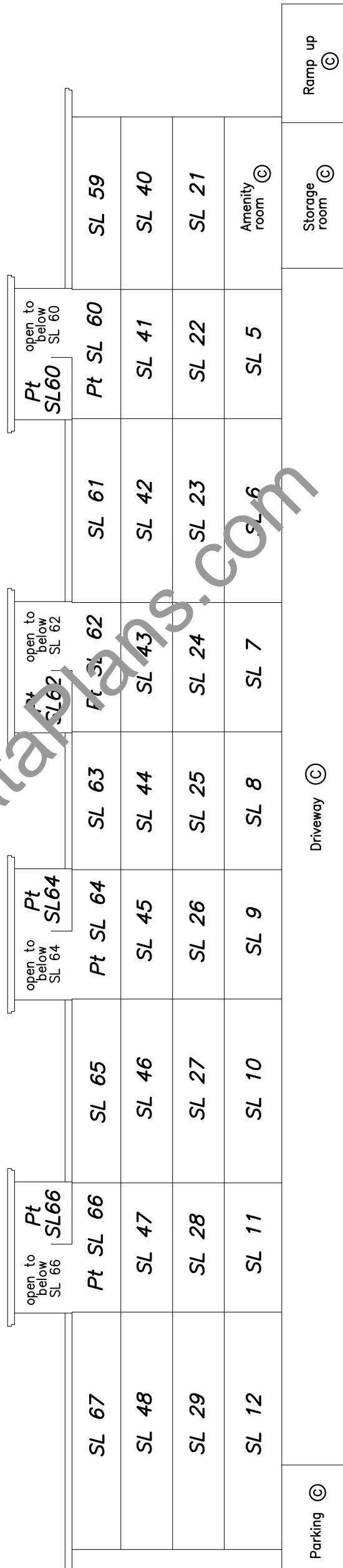
SCALE - 1 : 250

All distances are in metres

The intended plot size of this plan is 280mm in width by 432mm in height (size B) when plotted at a scale of 1:250



**Section B-B'**



**Section A-A'**

Cameron Land Surveying Ltd.  
 B.C. Land Surveyors  
 Unit 206 - 16055 Fraser Highway  
 Surrey, B.C. V4N 0G2  
 Phone: 604-597-3777  
 Fax: 604-597-3783

Sean Costello, BCLS  
 December 4th, 2017.