

STRATA PLAN OF LOT 'F'  
BLOCK 40, DISTRICT LOT 185,  
GP. I, PLAN 21410

STRATA PLAN VR. 2375

CITY OF VANCOUVER

SCALE 1 : 500  
ALL DISTANCE ARE IN METRES

DEPOSITED AND REGISTERED IN THE LAND  
TITLE OFFICE AT VANCOUVER B.C.  
THIS 3<sup>rd</sup> DAY OF MARCH 1989

LEGEND

- S.L. DENOTES STRATA LOT
- PT DENOTES PART
- T DENOTES TOTAL
- m<sup>2</sup> DENOTES SQUARE METRES
- (T-B) DENOTES TERRACE BEING LIMITED COMMON PROPERTY FOR THE EXCLUSIVE USE OF S.L. 16 TYPICAL
- (B-E) DENOTES BALCONY BEING LIMITED COMMON PROPERTY FOR THE EXCLUSIVE USE OF S.L. 16 TYPICAL
- (C) DENOTES COMMON PROPERTY

*[Signature]*  
ASSISTANT DEPUTY REGISTRAR

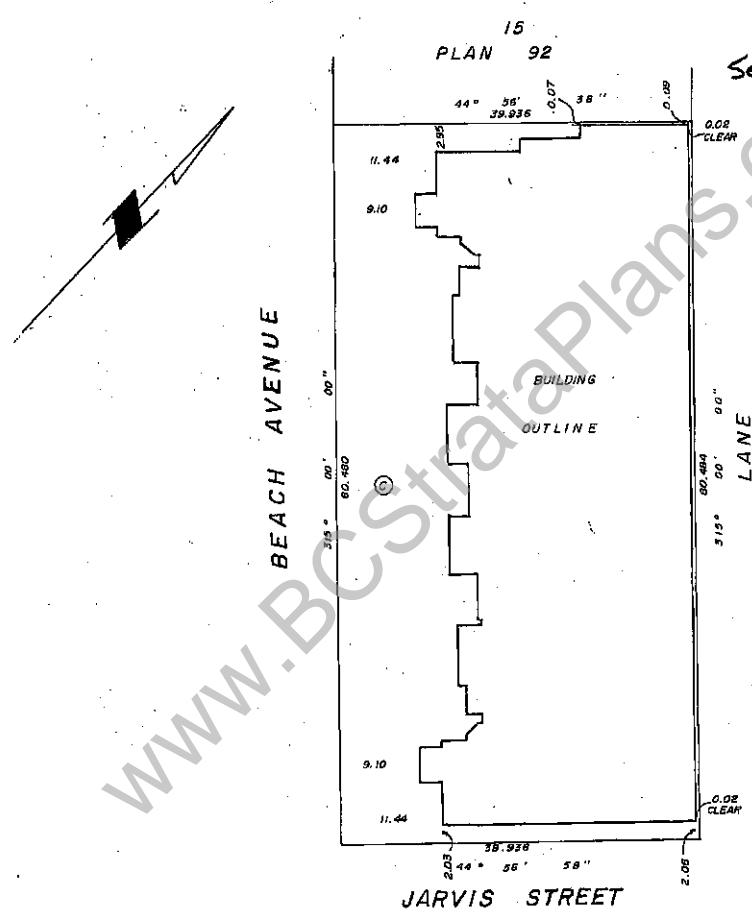
CIVIC ADDRESS :

1311, BEACH AVENUE  
VANCOUVER B.C.

GC 30698  
change of Address

1311 Beach Ave.  
Vancouver, BC  
V6E 1V6

See DF 02321307



I D. J. DYCK OF LANGLEY, B.C. A BRITISH COLUMBIA LAND SURVEYOR HEREBY CERTIFY THAT THE BUILDING ERECTED ON THE PARCEL DESCRIBED ABOVE IS WHOLLY WITHIN THE EXTERNAL BOUNDARIES OF THAT PARCEL.

DATED AT SURREY, B.C.  
THIS 31<sup>st</sup> DAY OF JANUARY 1989

*[Signature]*

B.C. L.S.

THE ADDRESS FOR SERVICE OF DOCUMENTS ON THE STRATA CORPORATION IS :  
THE OWNERS, STRATA PLAN VR. 2375

301-3701 E. HASTINGS  
BURNABY, B.C.

DYCK AND ASSOCIATES,  
208-6946, KING GEORGE HWY.  
SURREY, B.C. V3W 4Z9  
594-7527

THIS PLAN LIES WITHIN THE GREATER VANCOUVER REGIONAL DISTRICT.

FILE : 87-971

Status: Filed

Plan #: VAS2375 App #: N/A Crt #: (Altered)

RCVD: 98-02-26 RQST: 2012-10-25 13:58:03

STRATA PLAN 2375

CONDOMINIUM ACT

LOT No.	SHEET No.	FORM 1	FORM 2	FORM 3	CIVIC ADDRESS SUITE No.
		SCHEDULE OF UNIT ENTITLEMENT	SCHEDULE OF INTEREST UPON DESTRUCTION	SCHEDULE OF VOTING RIGHTS	
		UNIT ENTITLEMENT	INTEREST UPON DESTRUCTION	No OF VOTES	
1	6	1026	945		101
2	6	1002	929		102
3	6	1029	878		103
4	6	1051	895		104
5	6	1005	861		105
6	7, 8, 9	1909	1233		201
7	7	1526	1098		202
8	7	1152	828		203
9	7	1322	895		204
10	7	1402	963		205
11	7	1434	1098		206
12	7, 8	1417	557		207
13	7, 8	1182	659		208
14	7	1050	642		209
15	7	1487	997		210
16	8, 9	1651	1402		301
17	8, 9	1277	997		302
18	8, 9	1398	1132		303
19	8, 9	1492	1132		304
20	8, 9	1520	1064		305
21	8	1051	659		306
22	8, 9	1637	1234		307
23	9	1699	1537		401
24	9	1443	1334		402
25	10	1708	1453		501
26	10	1149	1064		502
27	10	1406	1233		503
28	10	1706	1486		601
29	10	1149	1081		602
30	10	1406	1267		603
31	11	1706	1520		701
32	11	1149	1098		702
33	11	1406	1301		703
34	11	1706	1554		801
35	11	1149	1115		802
36	11	1406	1334		803
37	12	1706	1588		901
38	12	1149	1132		902
39	12	1406	1419		903
40	12	1706	1639		1001
41	12	1149	1168		1002
42	12	1406	1453		1003
43	13	1706	1672		1101
44	13	1149	1199		1102
45	13	1406	1486		1103
46	13	1706	1723		1201

Status: Filed

Plan #: VAS2375 App # N/A CH # (Altered)

RCVD: 98-02-26 ROST: 2012-10-25 13:58:03

*D. Lloyd*  
 JAN. 31, 1989  
 FILE: 87-971

STRATA PLAN VR 2375

CONDOMINIUM ACT.

LOT No.	SHEET No.	FORM 1	FORM 2	FORM 3	CIVIC ADDRESS SUITE No.
		SCHEDULE OF UNIT ENTITLEMENT	SCHEDULE OF INTEREST UPON DESTRUCTION	SCHEDULE OF VOTING RIGHTS	
		UNIT ENTITLEMENT	INTEREST UPON DESTRUCTION	No OF VOTES	
47	13	1149	1233		1202
48	13	1406	1537		1203
49	14	1706	1774		1401
50	14	1149	1267		1402
51	14	1406	1605		1403
52	14	1706	1858		1501
53	14	1149	1334		1502
54	14	1406	1672		1503
55	15	3660	4983		1600
56	16	1712	1959		1701
57	16	1631	2196		1702
58	18	1712	2010		1801
59	16	1631	2247		1802
60	17	1712	2061		1901
61	17	1631	2297		1902
62	17	1743	2111		2001
63	17	1663	2348		2002
64	18	2819	4003		2100
65	18	2486	3328		2200
66	19	2828	4223		2300
AGGREGATE		100,000	100,000		

OWNER:  
AG SIX HOLDINGS LTD.

*[Signature]*  
AUTHORIZED SIGNATORY

AUTHORIZED SIGNATORY

MORTGAGEE:  
NATIONAL TRUST COMPANY.

*[Signature]*  
AUTHORIZED SIGNATORY

*[Signature]*  
AUTHORIZED SIGNATORY

I THE UNDERSIGNED DO SOLEMNLY DECLARE THAT  
1) I THE UNDERSIGNED AM THE DULY AUTHORIZED AGENT OF THE OWNER - DEVELOPER  
2) THE STRATA PLAN IS ENTIRELY FOR RESIDENTIAL USE  
I MAKE THIS SOLEMN DECLARATION CONSCIENTIOUSLY BELIEVING IT TO BE TRUE AND KNOWING THAT IT IS OF THE SAME FORCE AND EFFECT AS IF MADE UNDER OATH.

*[Signature]*

DECLARED BEFORE ME AT BURNABY, B.C.  
THIS 25 DAY OF JANUARY, 1989

A COMMISSIONER FOR TAKING AFFIDAVITS WITHIN THE PROVINCE OF BRITISH COLUMBIA.

PHILIP T. LAU  
Barrister & Solicitor  
2102-3701 E. HASTINGS ST.  
BURNABY, B.C. V5C 2H6  
T.F. No. 16041 987

ACCEPTED AS TO FORMS 1, 2 AND 3  
THIS 24 DAY OF FEBRUARY, 1989.

*[Signature]*  
SUPERINTENDENT OF REAL ESTATE

I, D.J. DYCK OF LANGLEY, B.C. A BRITISH COLUMBIA LAND SURVEYOR, HEREBY CERTIFY THAT THE BUILDING SHOWN IN THIS STRATA PLAN HAS NOT AS OF THE 21 DAY OF JANUARY, 1989 BEEN PREVIOUSLY OCCUPIED.  
DATED AT SURREY.  
THIS 31 DAY OF JANUARY, 1989

*[Signature]*  
B.C.L.S.

Status: Filed

Plan #: VAS2375 App #: N/A Ctr #: (Altered)

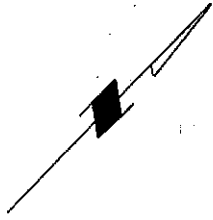
RCVD: 98-02-26 ROST: 2012-10-25 13:58:03

STRATA PLAN VR. 2375

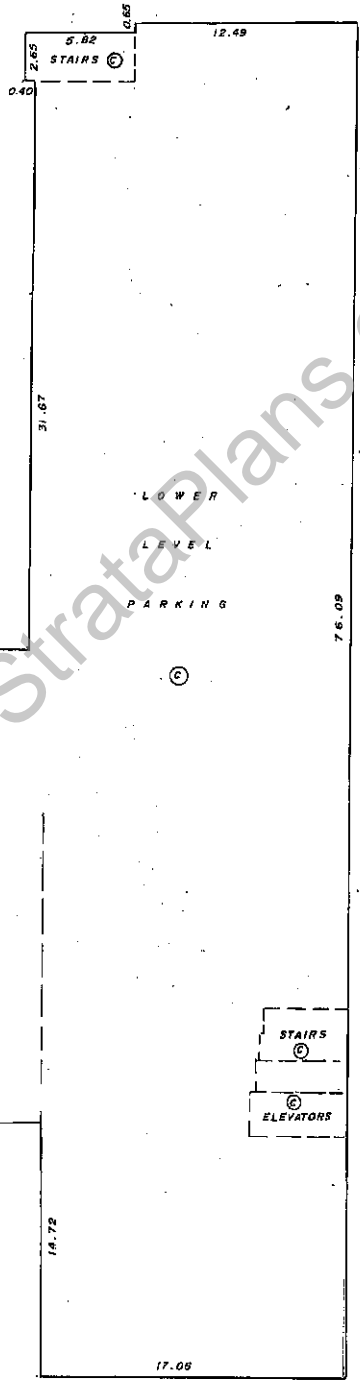
FLOOR PLANS  
SCALE 1:250



LOWER LEVEL PARKING



A



www.BCStrataPlans.com

A'

*[Handwritten signature]*

JAN. 31, 1959

FILE 87-971

Status: Filed

Plan #: VAS2375 App #: N/A Ctr #: (Altered)

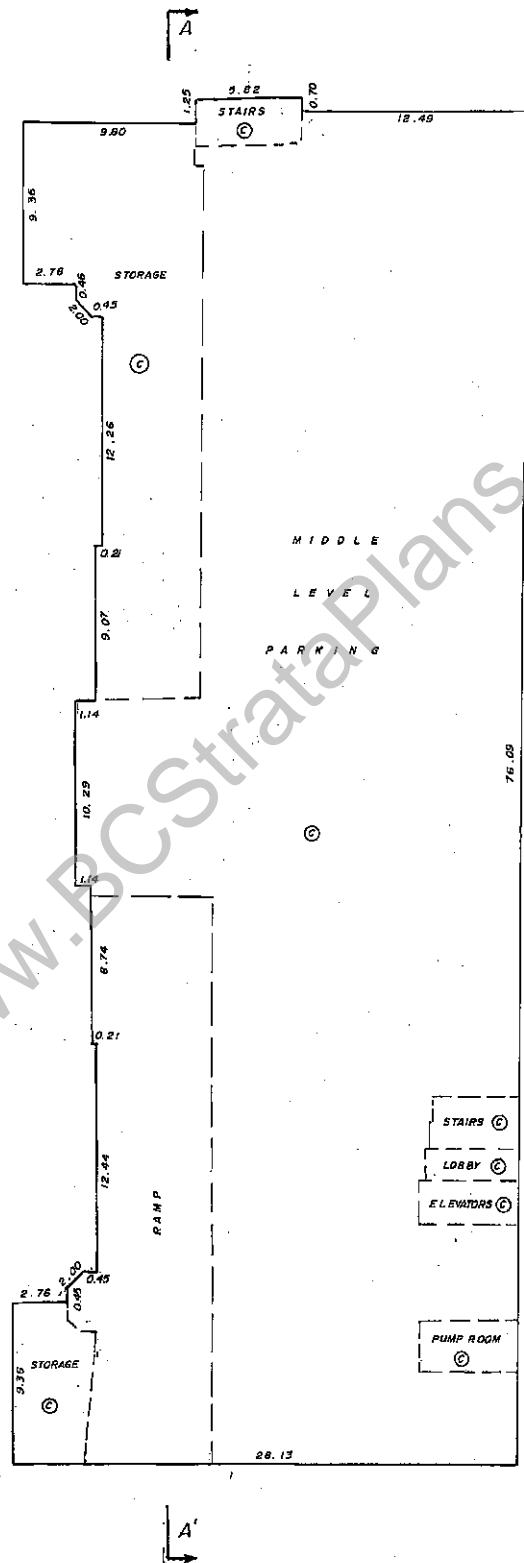
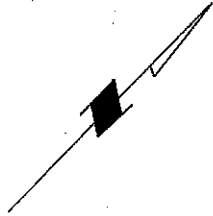
RCVD: 98-02-26 RQST: 2012-10-25 13:58:03

STRATA PLAN VR. 2375

FLOOR PLANS  
SCALE 1:250



MIDDLE LEVEL PARKING



WWW.BCStrataPlans.com

*Handwritten signature*  
JAN. 31, 1989  
FILE 87-971

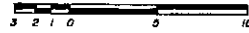
Status: Filed

Plan #: VAS2375 App #: N/A Ctl #: (Altered)

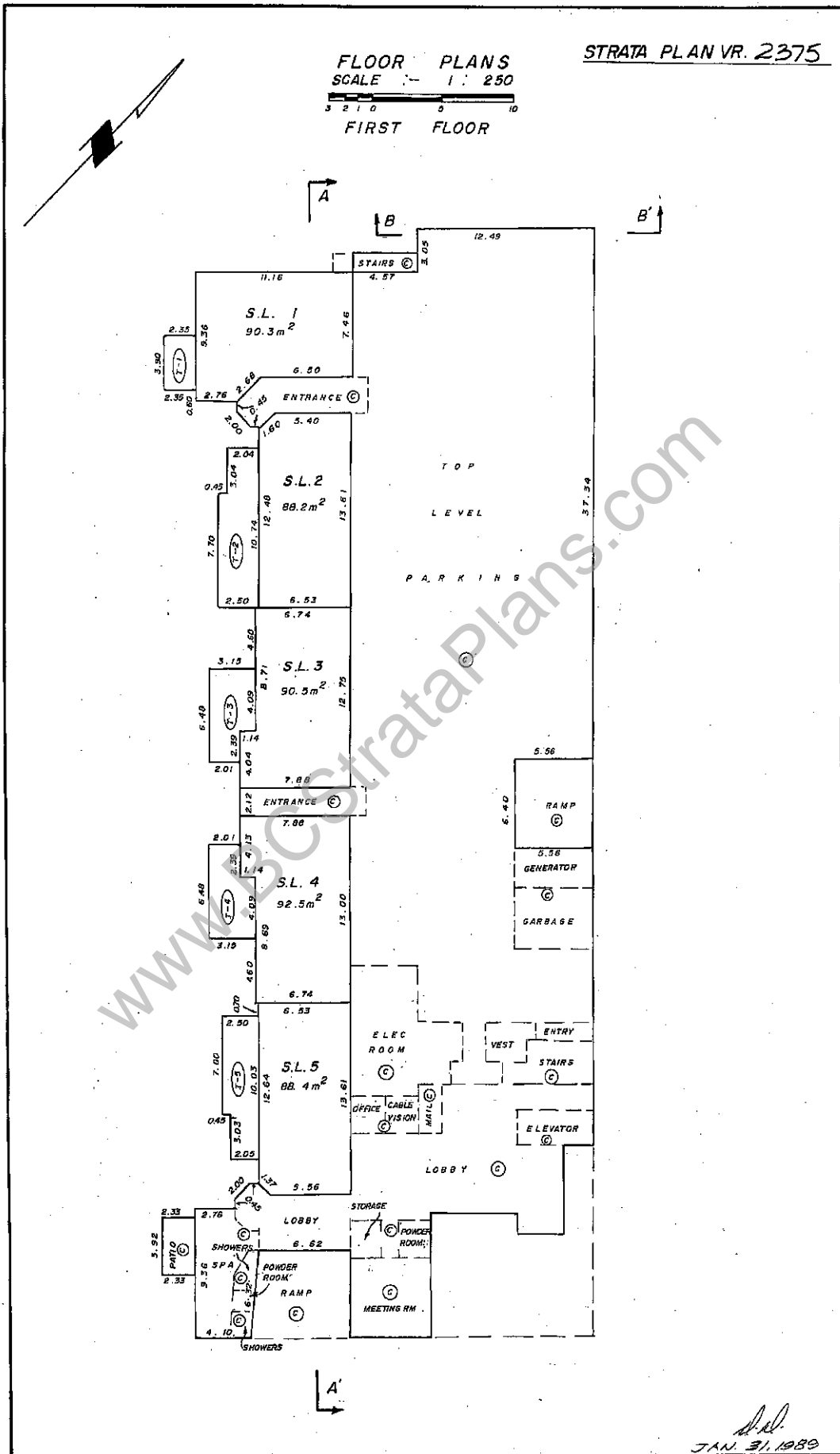
RCVD: 98-02-26 ROST: 2012-10-25 13:58:03

STRATA PLAN VR. 2375

FLOOR PLANS  
SCALE 1:250



FIRST FLOOR



*Handwritten signature*  
 JAN 31, 1989  
 FILE 87-971

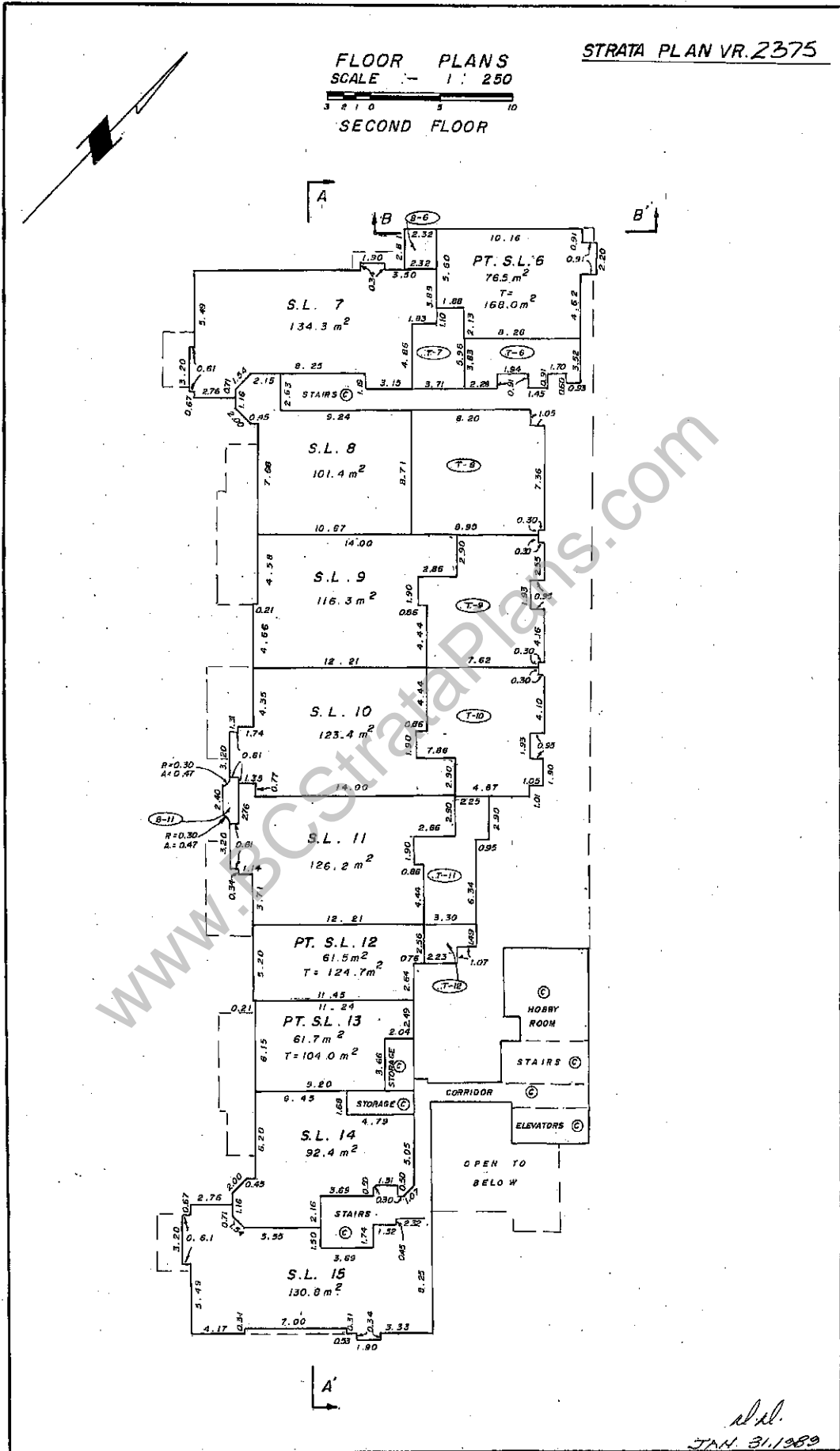
Status: Filed

Plan #: VASS2375 App #: N/A CRI #: (Altered)

RCVD: 98-02-26 RQST: 2012-10-25 13:58:03

STRATA PLAN VR.2375

FLOOR PLANS  
SCALE 1:250  
SECOND FLOOR



Status: Filed

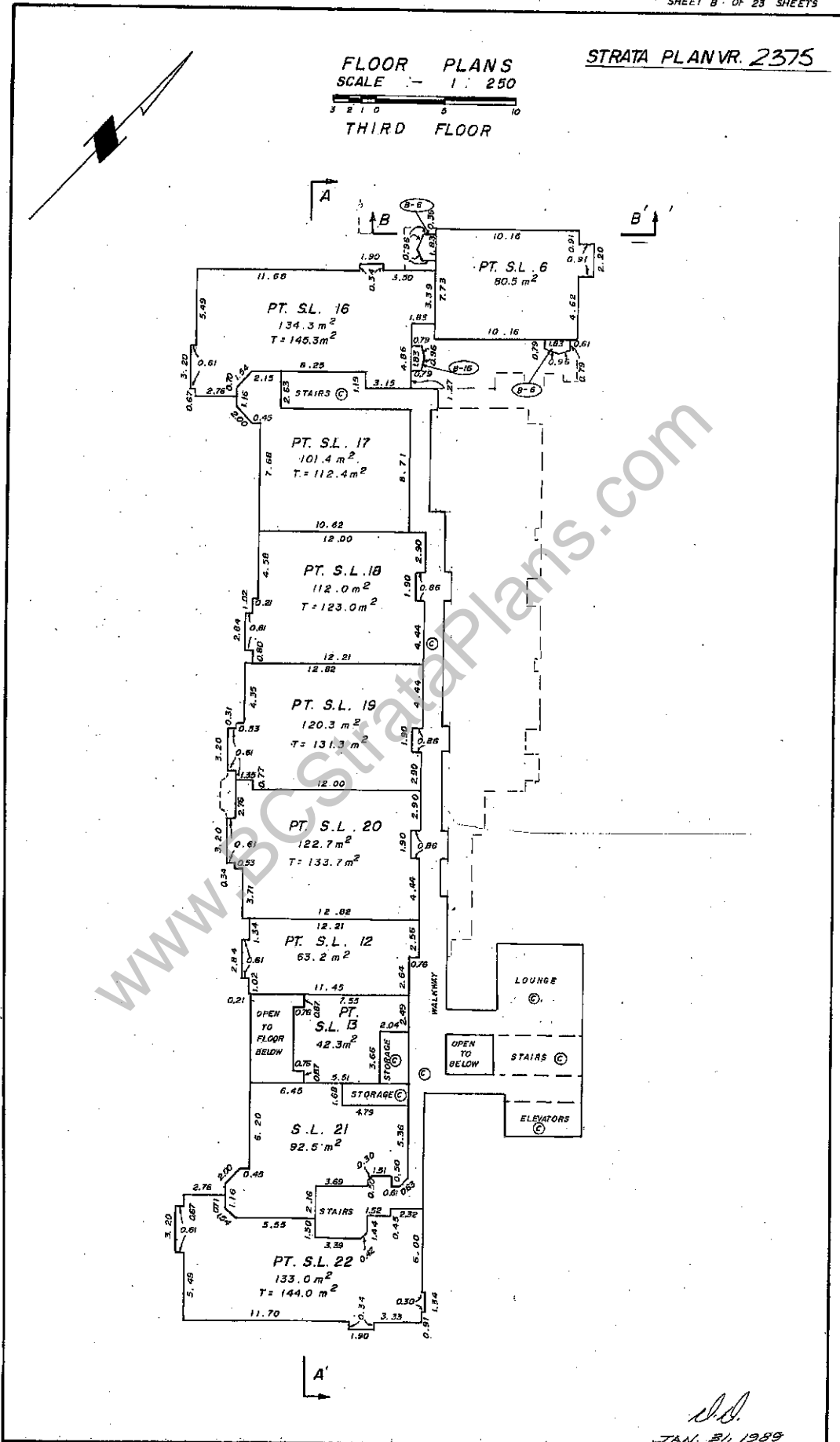
Plan #: VASS2375 App #: N/A Ctl #: (Altered)

RCVD: 98-02-26 ROST: 2012-10-25 13:58:03

*Handwritten signature*  
JAN 31 1999  
FILE 87-971

FLOOR PLANS  
SCALE 1:250  
THIRD FLOOR

STRATA PLAN VR. 2375



JAN. 31, 1989  
FILE 87-971

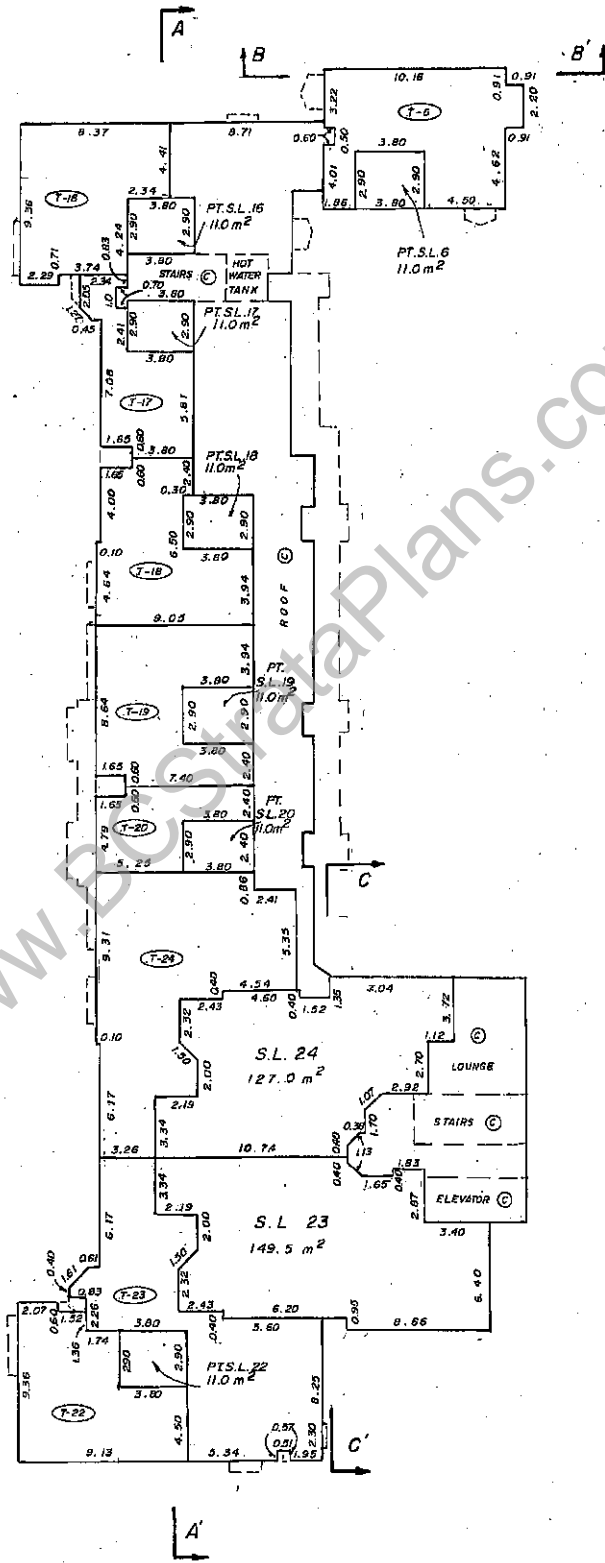
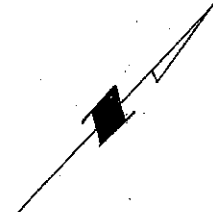


STRATA PLAN VR. 2375

FLOOR PLANS  
SCALE 1:250



FOURTH FLOOR



WWW.StrataPlans.com

*Handwritten signature*  
JAN 31 1999  
FILE 87-971

Status: Filed

Plan #: VAS2375 App #: N/A Ctl #: (Altered)

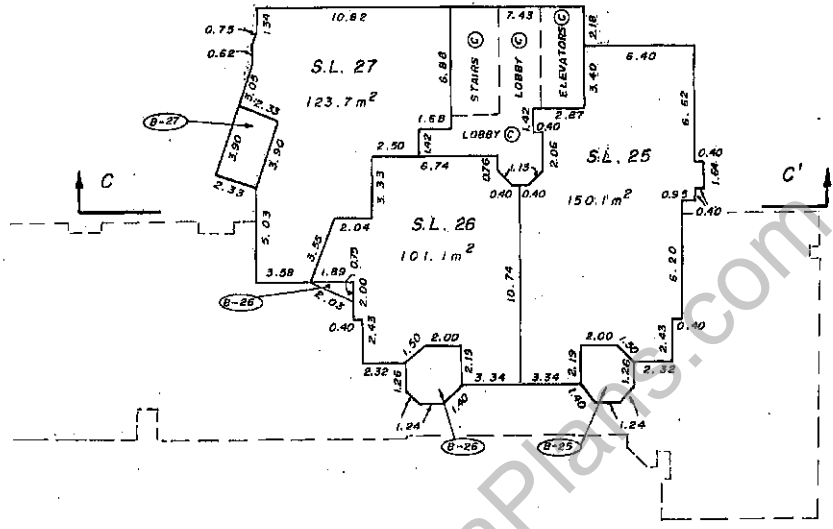
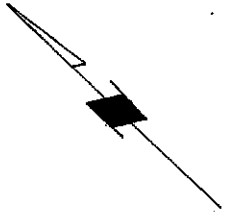
RCVD: 98-02-26 RQST: 2012-10-25 13:58:03

STRATA PLAN VR 2375

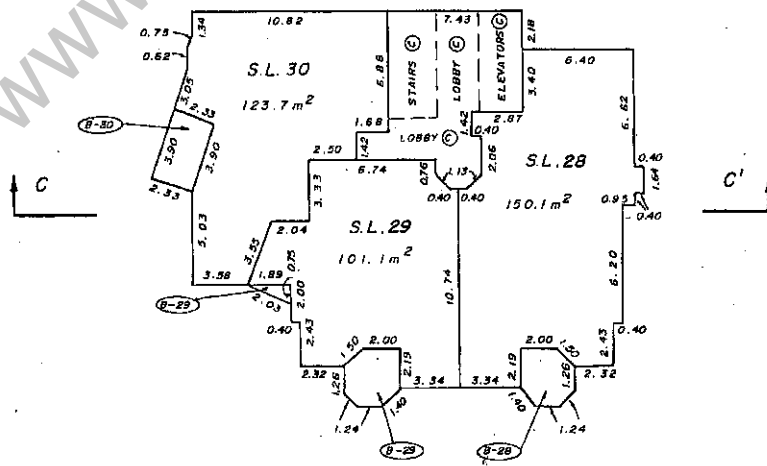
FLOOR PLANS  
SCALE 1:250



5th FLOOR  
LEVEL 5



6th FLOOR  
LEVEL 6



WWW.BCStrataPlans.com

*[Signature]*  
JAN. 31, 1999

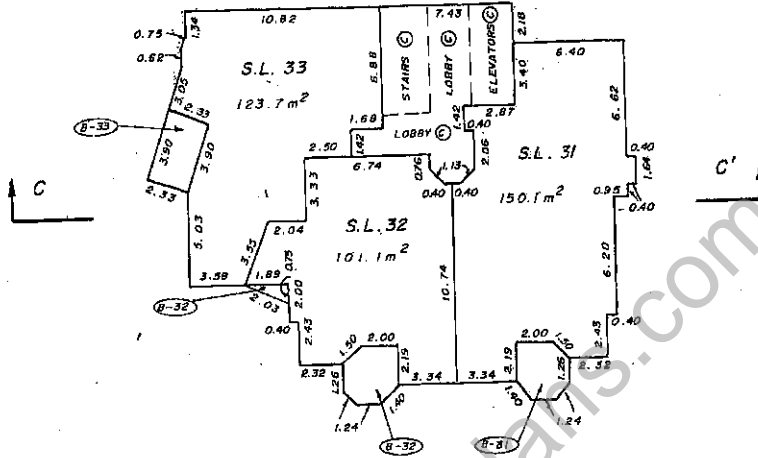
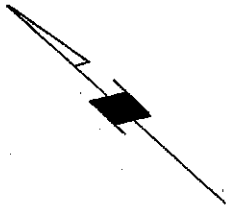
FILE: 87-971

STRATA PLAN VR 2375

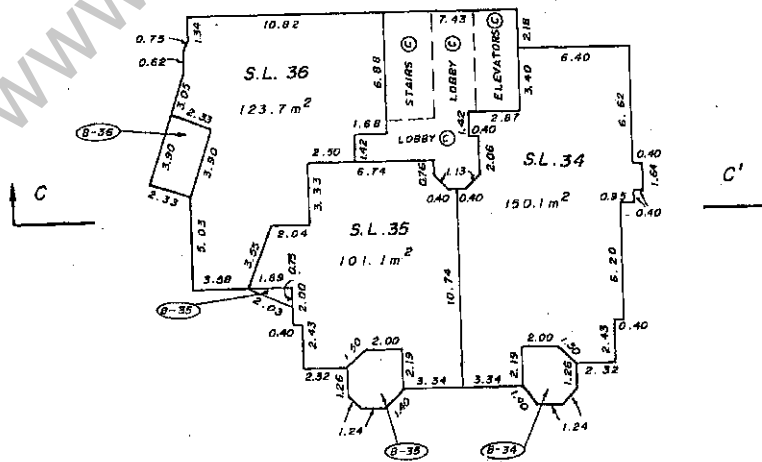
FLOOR PLANS  
SCALE 1:250



7th FLOOR  
LEVEL 7



8th FLOOR  
LEVEL 8



*J.S.*  
JAN. 31, 1989.

FILE: 87-971

Status: Filed

Plan #: VAS2375 App #: N/A Ctl #: (Altered)

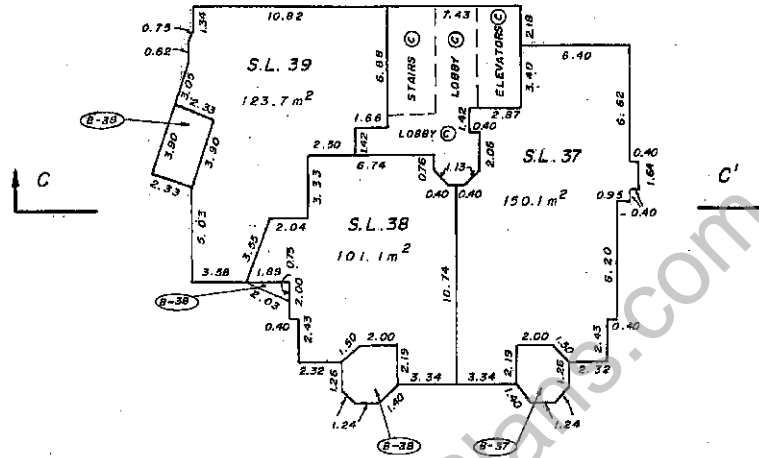
RCVD: 98-02-26 RQST: 2012-10-25 13:58:03

STRATA PLAN VR 2375

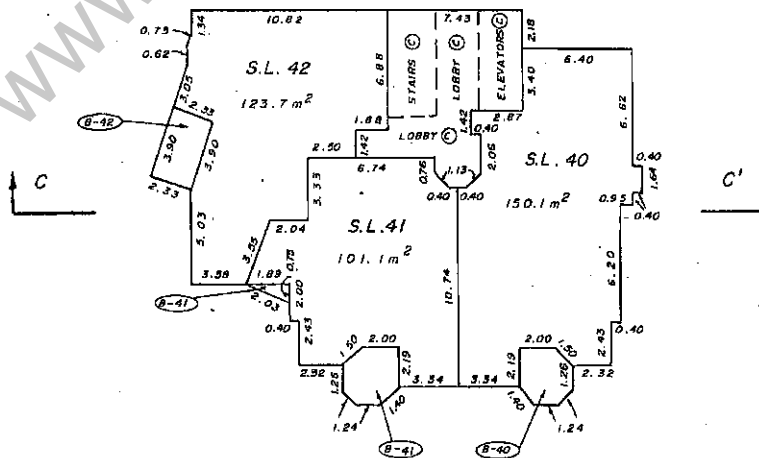
FLOOR PLANS  
SCALE - 1:250



9th FLOOR  
LEVEL 9



10th FLOOR  
LEVEL 10



*del*  
JAN. 31, 1989

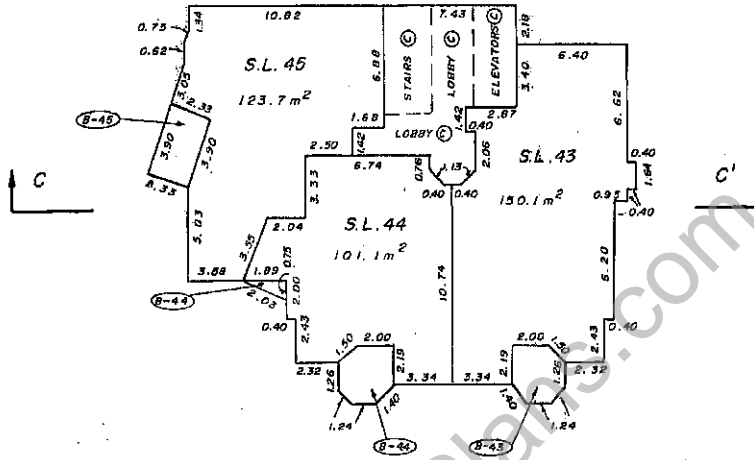
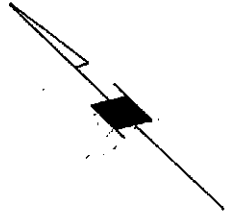
FILE: 87-971

STRATA PLAN VR 2375

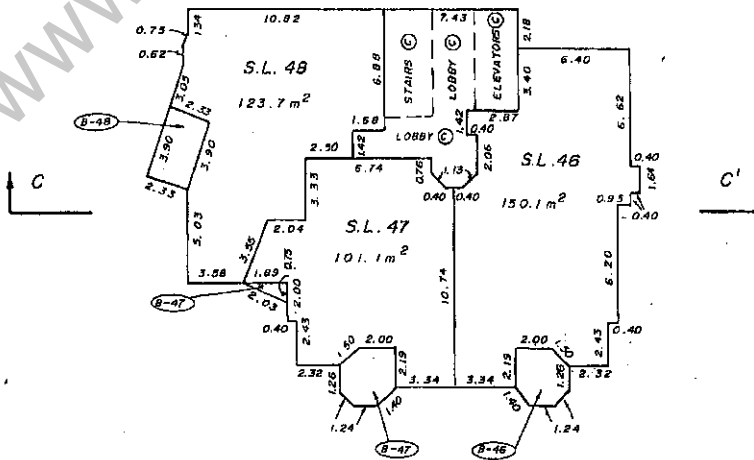
FLOOR PLANS  
SCALE 1:250



11th FLOOR  
LEVEL 11



12th FLOOR  
LEVEL 12



J.S.  
JAN. 31, 1989  
FILE: 87-971

Status: Filed

Plan #: VAS2375 App #: N/A Cnt #: (Altered)

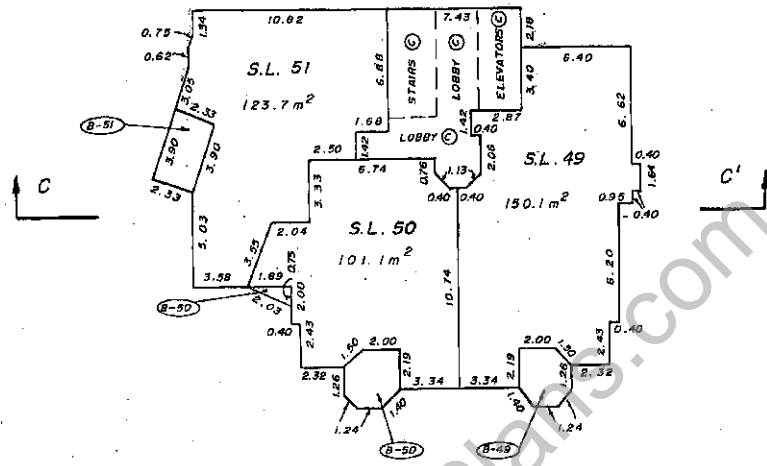
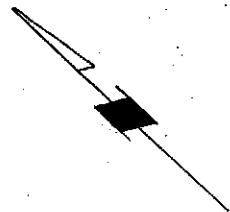
RCVD: 98-02-26 RQST: 2012-10-25 13:58:03

STRATA PLAN VR 2375

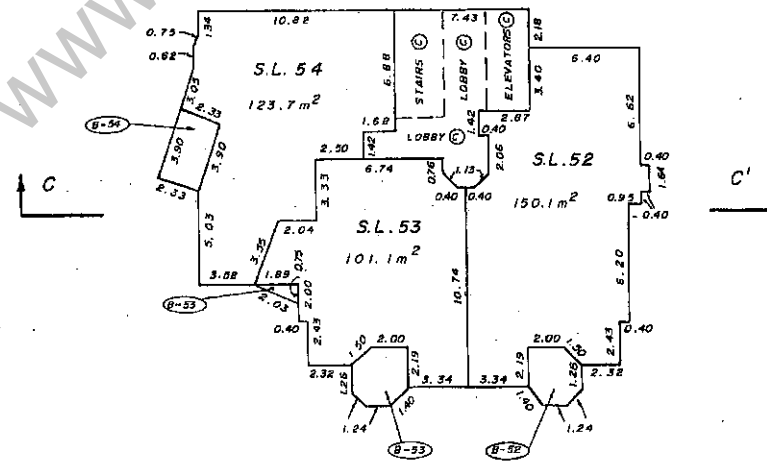
FLOOR PLANS  
SCALE - 1:250



14th FLOOR  
LEVEL 13



15th FLOOR  
LEVEL 14



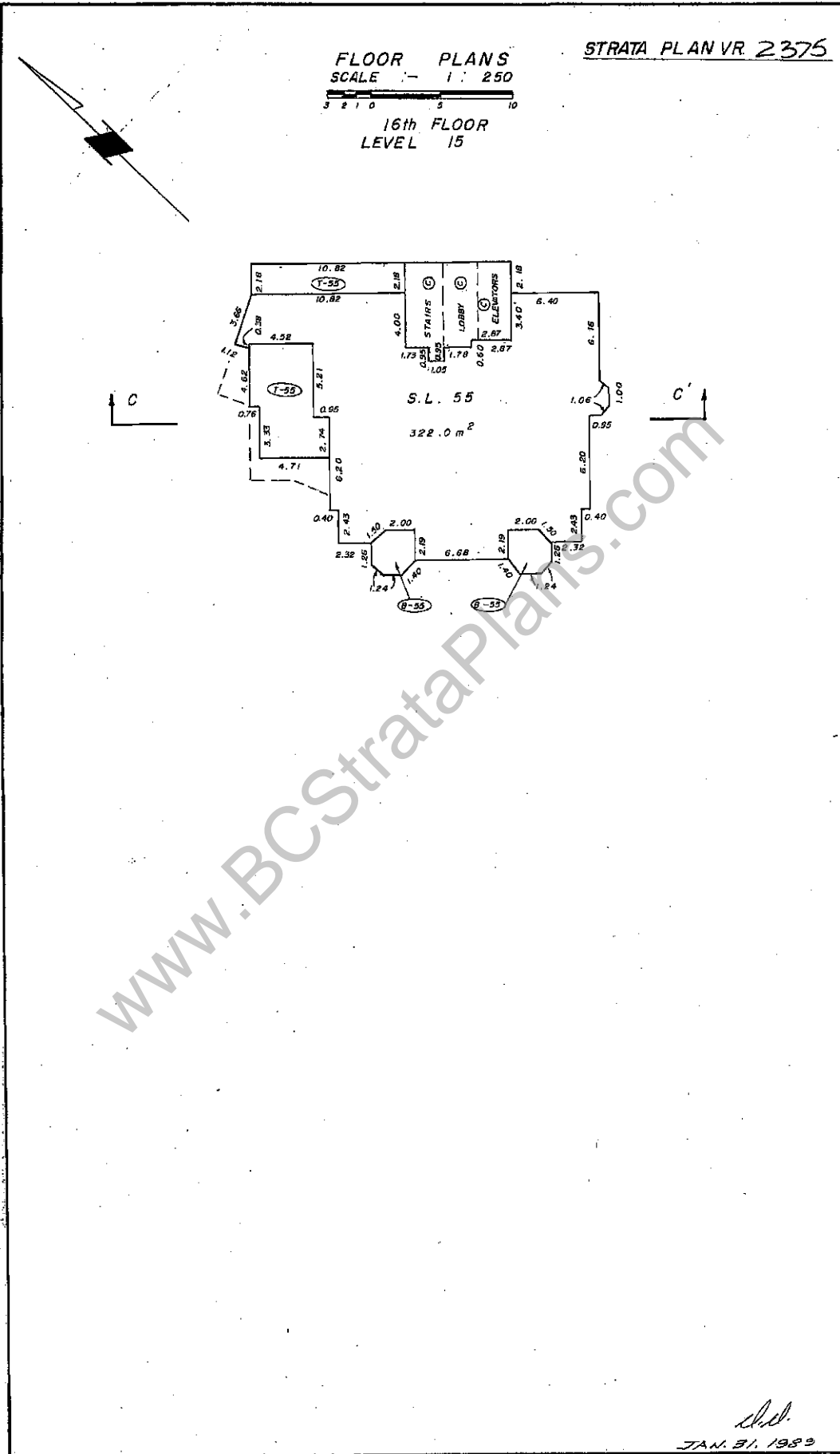
*S.H.*  
JAN. 31, 1989  
FILE: 87-971

FLOOR PLANS  
SCALE 1 : 250



16th FLOOR  
LEVEL 15

STRATA PLAN VR 2375



*[Signature]*  
JAN. 31, 1989  
FILE 87-971

Status: Filed

Plan #: VAS2375 App #: N/A Ctl #: (Altered)

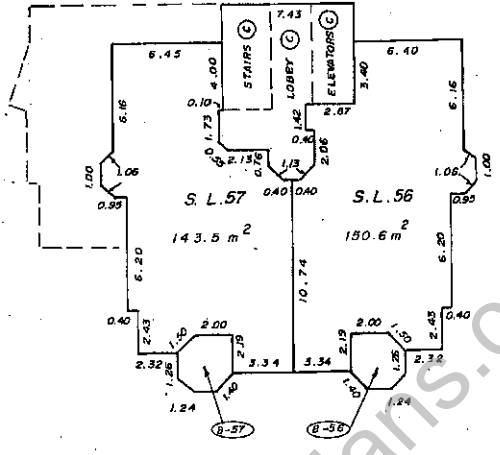
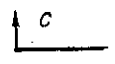
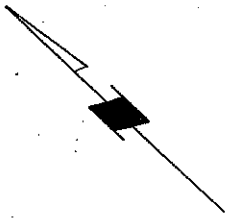
RCVD: 98-02-26 ROST: 2012-10-25 13:58:03

FLOOR PLANS  
SCALE - 1 : 250

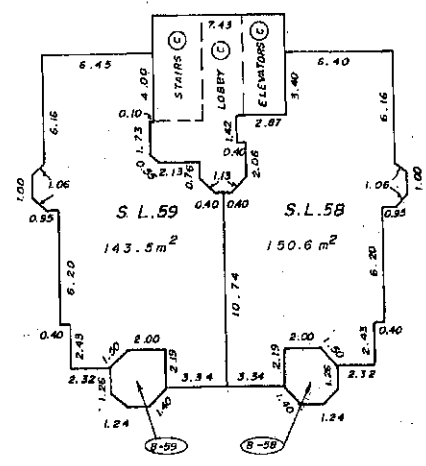
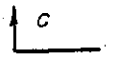
STRATA PLAN VR 2375



17th FLOOR  
LEVEL 16



18th FLOOR  
LEVEL 17



*Handwritten signature*  
JAN. 31. 1989  
FILE 97-971

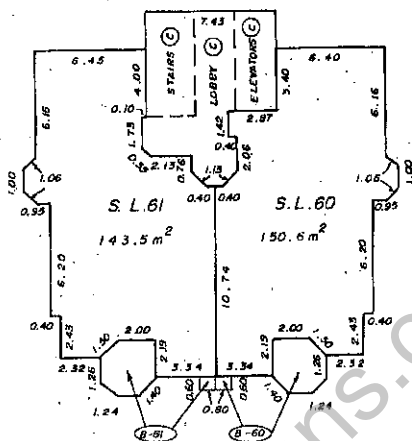
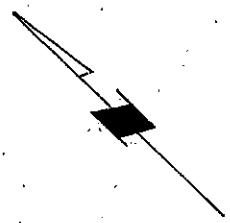


STRATA PLAN VR 2375

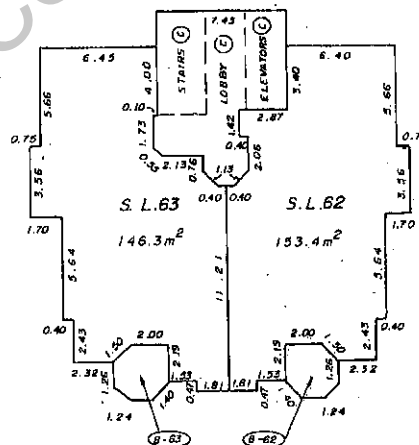
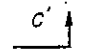
FLOOR PLANS  
SCALE 1:250



19th FLOOR  
LEVEL 18



20th FLOOR  
LEVEL 19



JAN. 31, 1989

RLE 87-971

Status: Filed

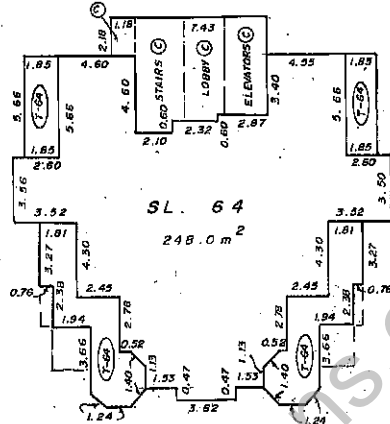
Plan #: VAS2375 App #: NA Cr1 #: (Altered)

HCVD: 98-02-26 RCST: 2012-10-25 13:58:03

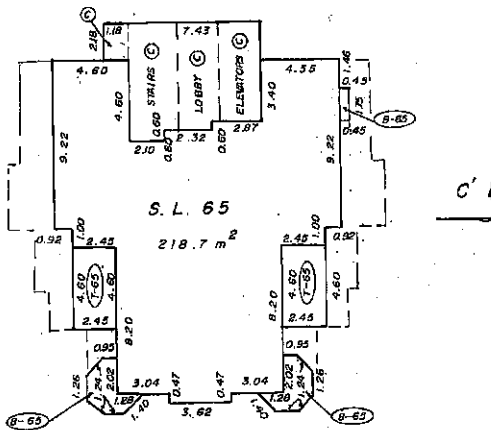
FLOOR PLANS  
SCALE - 1 : 250



21st FLOOR  
LEVEL 20



22nd FLOOR  
LEVEL 21



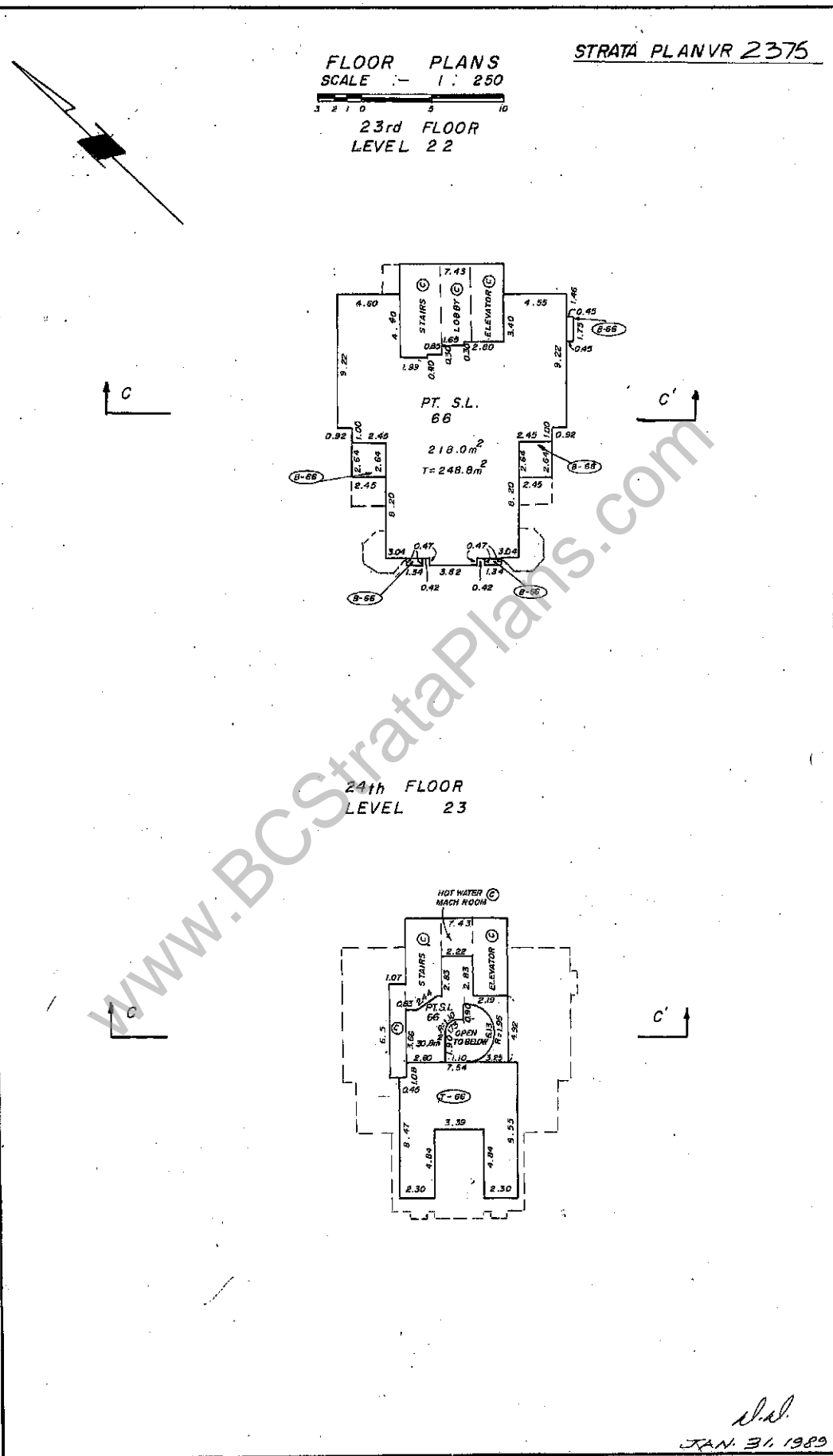
JAN. 31, 1989  
FILE 87-971

FLOOR PLANS  
SCALE 1:250

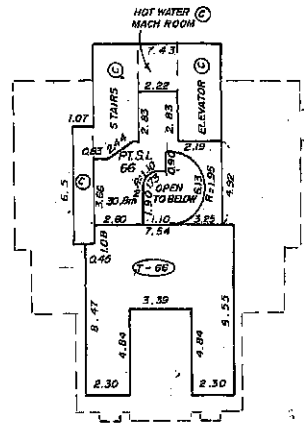


23rd FLOOR  
LEVEL 22

STRATA PLAN VR 2375



24th FLOOR  
LEVEL 23

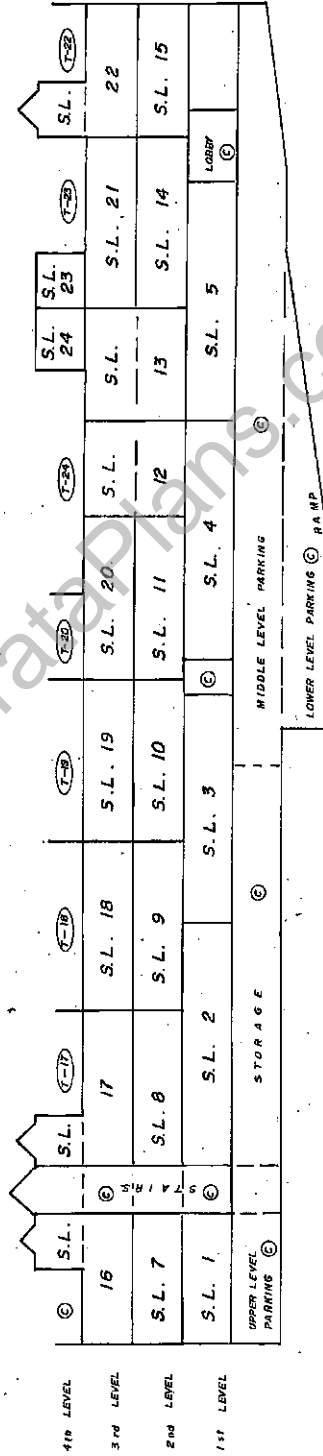
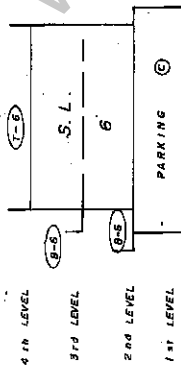


JAN. 31, 1989  
FILE 87-971

SECTIONS

STRATA PLAN VR. 2375

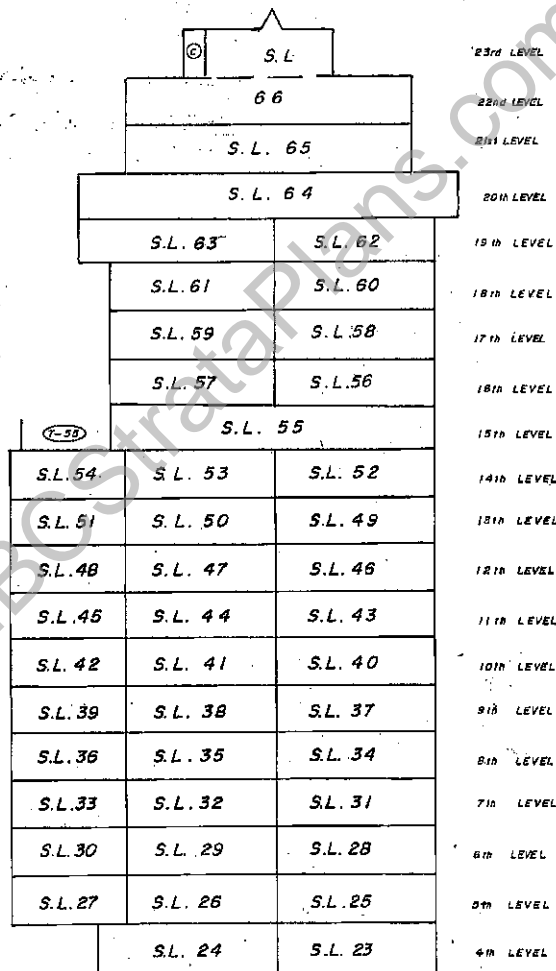
SCALE 1:250



JAN 31 1998  
FILE: 67-971

SECTIONS  
SCALE 1:250

STRATA PLAN VR. 2375



SECTION C-C'

*[Signature]*  
JAN 31 1989  
FILE: 87-971

Status: Filed

Plan #: VAS2375 App #: N/A Cnt #: (Altered)

RCVD: 98-02-26 RQST: 2012-10-25 13:58:03

STRATA PLAN VR 2375

RECORDS OF BY-LAWS AND ORDERS

FILING		DOCUMENTS	
NUMBER	DATE	DATE	NATURE AND PARTICULARS
DF 6289458	9/8/90	13/8/90	NOTIFICATION OF CHANGE OF BY-LAWS
BF260434	9-7-97		Change of Bylaws
BH264987	July 14/94		Change of Bylaw
BL246182	July 16/97		change of Bylaws
<u>Bylaw Sheet Closed</u>			
Search ALTOS2 or EC OnLine for Current Information. BC Reg. 75/95			

www.bcstrataplans.com

Status: Filed

Plan #: VAS2375 App #: N/A Ctl #: (Altered)

RCVD: 98-02-26 ROST: 2012-10-25 13:58.03

*[Signature]*  
 JAN 31 1989  
 FILE : 87-971

