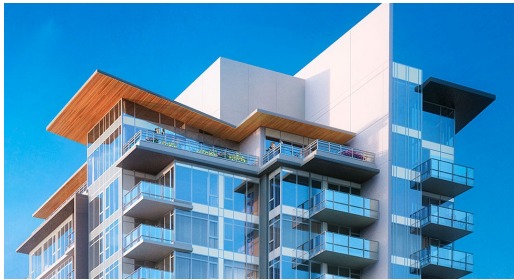


Crown's penthouse No. 1 floorplan is 1,618 square feet of pure luxury-living

Livabl Staff
May 12, 2015
Livabl



Looking for plenty space, sweeping Metro Vancouver views and high-end home features? The penthouse No. 1 floorplan atop West Coquitlam's 26-storey Crown condo development is a three-bedroom, two-bathroom home boasting 1,267 square feet of indoor living space in addition to 351 square feet of outdoor living space divided between two private balconies.



Inside, residents will enjoy such desirable features as over-height doors, a stainless steel kitchen appliance package, stone countertops, marble backsplash, full-size washer and dryer, rich wood grain laminate flooring, and much more.

The luxury continues with Crown's nearly 6,000 square feet of indoor and outdoor amenities, which include an entertainment lounge, fitness centre and expansive terrace with a full outdoor kitchen.



Life at Crown promises to be as convenient as it is luxurious. The 26-storey high-rise is ideally situated on a peaceful, tree-lined street that's just steps away from the forthcoming Evergreen Line.

To learn more about the penthouse plan, or any other remaining home at Crown, visit the sales centre and show at #104 – 552 Clarke Road in Coquitlam. The facility is open daily, except Friday, from 12pm to 5pm.

For more information call 604 939 8868, email info@crownbybeedie.ca or visit the website [here](http://www.crownbybeedie.ca).