



RIVER'S EDGE IS A COLLECTION OF
QUALITY CONDOS IN MAPLE RIDGE
Prices start at \$157,900



VIEWS OF THE FRASER RIVER



STAINLESS STEEL KITCHEN



River's Edge condos are located in the heart of Maple Ridge, where you'll be steps away from the West Coast Express and Port Haney Wharf. Since the condos are situated alongside the Fraser River, a picturesque view is never far away. All River's Edge condos come with quality European construction, top-of-the-line finishing, and a new home warranty. Come visit our show suite today!

CONTACT US 604.453.4965

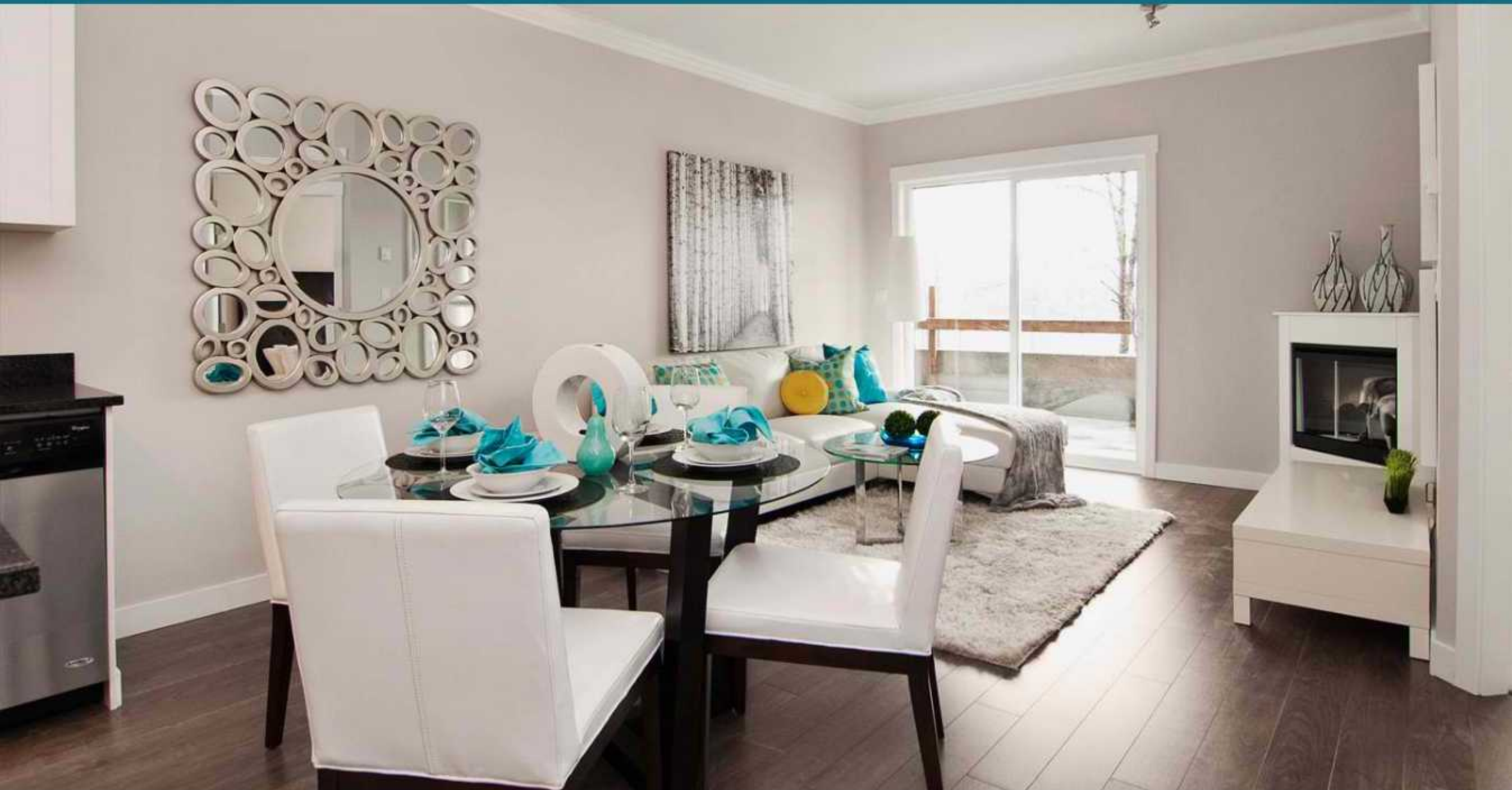
11580 223rd Street presentation centre is open
Saturday - Sunday, 12-5 PM, or by appointment anytime

©2017 Greenside Properties. All rights reserved.



BCCONDOS.NET





FLOORPLANS

- PLAN A
- PLAN B
- PLAN C
- PLAN D
- PLAN E
- PLAN F
- PLAN G
- PLAN H
- PLAN J

RIVER'S
EDGE

PLAN A
2 BEDROOM + 1½ BATH + PATIO
1050 SQ. FT.



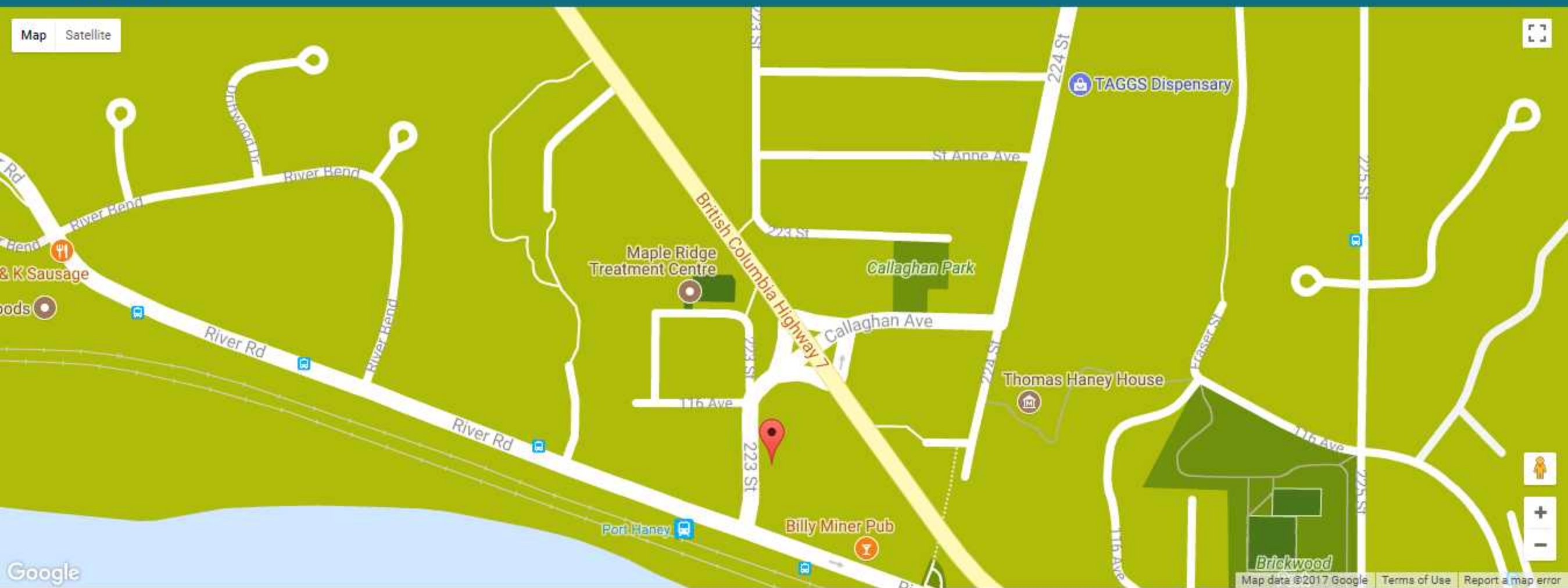
In our continuing efforts to improve these plans, we reserve the right to modify or change plans, specifications, features and prices without notice. Measurements are an artist's conception and are intended as general reference only. Room sizes are 2 square footages are based on architect's measurements. Please refer to the factbook attached to each offering sheet. This is not an offering for sale. Any such offering may only be made with the applicable disclosure statement and approval of purchaser and sales. BCC

CONTACT US 604.453.4965

©2017 Greenside Properties. All rights reserved.

11580 223rd Street presentation centre is open
Saturday - Sunday, 12-5 PM, or by appointment anytime

BCCONDOS.NET



LOCATION

If you walk south, you will find the Fraser River and dog-friendly parks. If you walk north, you will find Haney Place Mall, schools, and a variety of other amenities. Stores at Haney Place Mall include Thrifty Foods, Purdy's, The Source, and Rexall. The West Coast Express is also steps away from your front door. By living at River's Edge, you can experience the best of both worlds.

WALKING TIMES

-  West Coast Express
1 minute
-  Brickwood Park
4 minutes
-  Haney Place Mall
10 minutes

At River's Edge, you can enjoy both the beauty of nature and the convenience of modern-day transit and shopping.

The future of Port Haney is also looking bright. A development proposal involves building 600 metres of waterfront alongside the Fraser River. The plan includes a marina, float plane terminal, and 4.5 acres of park space. Residential and commercial buildings would face the Fraser River, and the entire development would be pedestrian-orientated.

Downtown Maple Ridge has been growing steadily these past few years, with no sign of slowing down. Live at River's Edge and be a part of this up-and-coming community!





BUILDER'S STORY

Greenside Properties has been in the construction business for more than 20 years. Together, the three owners of the company bring over 130 years of residential, commercial, and industrial construction experience to the table. Greenside Properties brings a European flair to their projects with their attention to detail and strict craftsmanship standards. They maintain strong links with all professional trades to ensure the highest quality product at the most competitive price. Their homes are highly sought after by the marketplace. Recent success stories include:

SPRUCE GROVE DEVELOPMENT - WHISTLER

RIVER WALK CONDO - WHISTLER

CENTRO - MAPLE RIDGE

SOLO - MAPLE RIDGE

VILLAGIO - PITT MEADOWS

RIMINI TOWNHOMES - NANAIMO

MONTOBELLO CONDOS - NANAIMO



RIMINI TOWNHOMES - NANAIMO



VILLAGIO - PITT MEADOWS

CONTACT US 604.453.4965

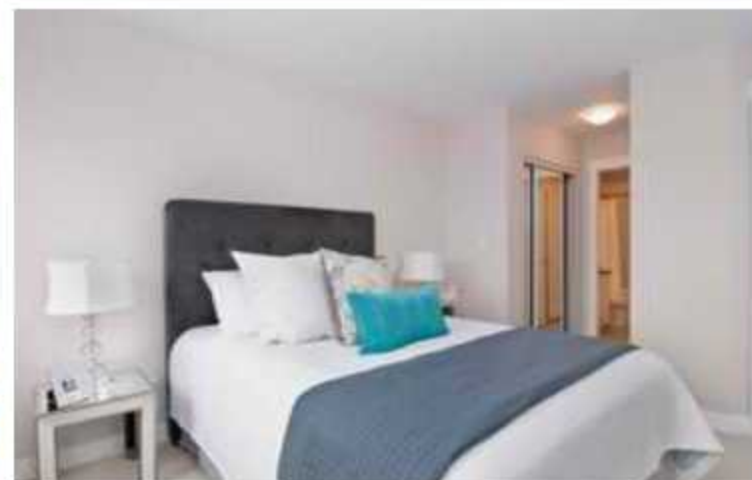
11580 223rd Street presentation centre is open
Saturday - Sunday, 12-5 PM, or by appointment anytime

©2017 Greenside Properties. All rights reserved.





GALLERY



CONTACT US 604.453.4965

11580 223rd Street presentation centre is open
Saturday - Sunday, 12-5 PM, or by appointment anytime.

©2017 Greenside Properties. All rights reserved.



BCCONDOS.NET





CONTACT

If you have any questions, please fill out the form below and we will get back to you shortly.

FIRST NAME *

LAST NAME *

E-MAIL *

PHONE

COMMENT



PRESENTATION CENTRE

11580 223rd Street, Maple Ridge BC
Open Saturday - Sunday, 12 - 5 PM or by
appointment anytime.
604.453.4965

SUBMIT

CONTACT US 604.453.4965

©2017 Greenside Properties. All rights reserved.

11580 223rd Street presentation centre is open
Saturday - Sunday, 12-5 PM, or by appointment anytime.



BCCONDOS.NET

