



A WATERFRONT COMMUNITY BY PINNACLE

This is not an offering for sale. Any such offerings may only be made with a Disclosure Statement, E.&E.O.

[Project](#) • [Amenities](#) • [Location](#) • [Features](#) • [Floorplans](#) • [Register](#)

Cascade At The Pier

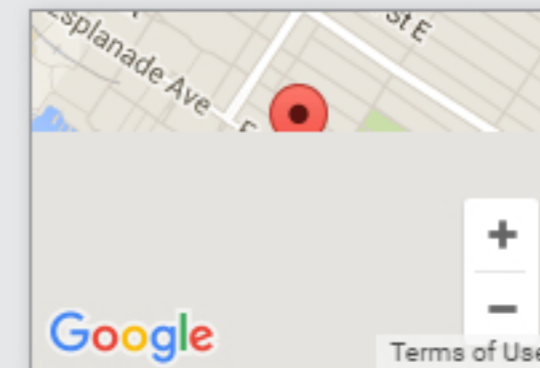
172 Victory Ship Way
North Vancouver, BC

EXPERIENCE TRUE WATERFRONT LIVING, WHERE SPECTACULAR VIEWS OF BURRARD INLET, STANLEY PARK, LIONS GATE BRIDGE AND THE GLIMMERING VANCOUVER SKYLINE GREET YOU MORNING AND EVENING.

Live in genuine luxury, complete with unrivalled workmanship and European finishes. Step out to a wealth of fine restaurants, shops and markets, all just a stroll away. Come home to Cascade.



[Back to Projects](#)



[View Larger Map](#)



The Amenities

WHERE ONCE MIGHTY SHIPS WERE CRAFTED, TODAY A MASTER-PLANNED NEIGHBOURHOOD HAS EVOLVED. TRENDY RESTAURANTS AND SHOPS MIX WITH PARKS AND ART INSTALLATIONS TO CREATE A THRIVING, INCLUSIVE WATERFRONT COMMUNITY.

The renewal has been astounding, with antiquated warehouses replaced by a luxury hotel, and forgotten docks transformed into bustling oceanfront walkways. And even more exciting amenities are planned for The Pier community.

The residences at Cascade will enjoy enviable access to five-star privileges at the Pinnacle Pier Hotel; the 25-metre pool, fitness club, yoga studio, executive meeting rooms and fine dining at The Lobby Restaurant.

An extraordinary West Coast lifestyle unfolds, for those who call Cascade at The Pier home.



The Location

LOWER LONSDALE OFFERS AN URBAN LIVING EXPERIENCE THAT RIVALS ANY IN THE WORLD. EMINENTLY WALKABLE, BRIMMING WITH CHARM, AND ALL CENTERED AROUND ONE OF THE NORTH SHORE'S MOST TREASURED GEMS, THE PIER.

Walk to an array of restaurants or shop for fresh produce and locally made artisanal wonders at the Lonsdale Quay Market. Then, when the mood strikes, you can cruise 15 minutes aboard the SeaBus to experience the energy of Downtown Vancouver.

It's modern waterfront living at its finest.



The Features

ASIDE FROM THE SPECTACULAR VIEWS, THE INTERIORS MIGHT BE THE MOST BREATHTAKING ASPECTS OF THE RESIDENCES AT CASCADE.

Uncompromising quality and obsessive craftsmanship are evident throughout these ultra-lux residences.

Granite, marble and hardwood. Scavolini kitchens with Bosch appliances. Elegant fixtures, overheight ceilings and floor-to-ceiling windows. Cascade at The Pier is a touchstone of sophistication and comfort.



THE FLOORPLANS

East

West

Level 1

Level 2

Level 3 - 8

Level 9

Penthouse

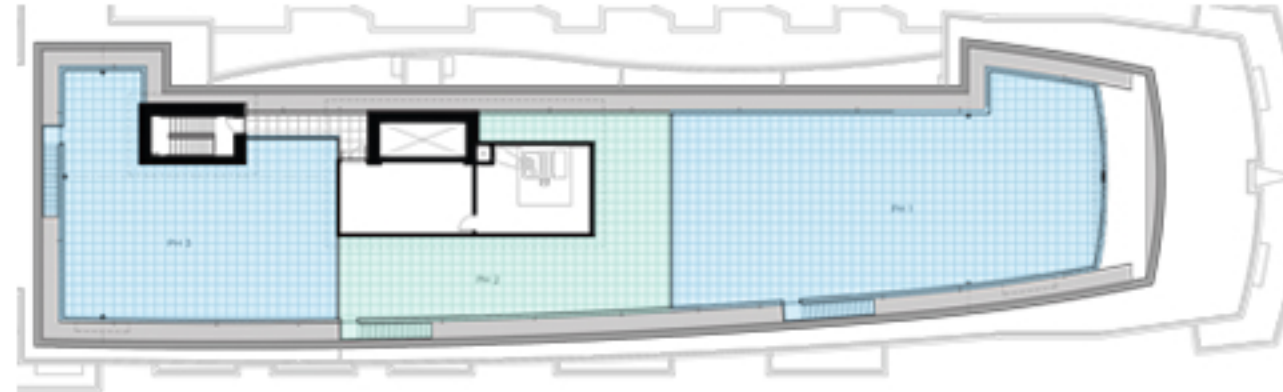
East Penthouse



PENTHOUSE 3
3 BED 3 BATH
SUITE: 2,068 SQ.FT.
PATIO: 1,468 SQ.FT.
ROOF DECK: 2,000 SQ.FT.
TOTAL: 5,536 SQ.FT.

PENTHOUSE 2
3 BED 3 BATH
SUITE: 1,915 SQ.FT.
TERRACE: 568 SQ.FT.
ROOF DECK: 1,495 SQ.FT.
TOTAL: 3,978 SQ.FT.

PENTHOUSE 1
3 BED 3 BATH
SUITE: 2,371 SQ.FT.
TERRACE: 2,838 SQ.FT.
ROOF DECK: 2,998 SQ.FT.
TOTAL: 8,207 SQ.FT.



PENTHOUSE 3
3 BED 3 BATH
SUITE: 2,068 SQ.FT.
PATIO: 1,468 SQ.FT.
ROOF DECK: 2,000 SQ.FT.
TOTAL: 5,536 SQ.FT.

PENTHOUSE 2
3 BED 3 BATH
SUITE: 1,915 SQ.FT.
TERRACE: 568 SQ.FT.
ROOF DECK: 1,495 SQ.FT.
TOTAL: 3,978 SQ.FT.

PENTHOUSE 1
3 BED 3 BATH
SUITE: 2,371 SQ.FT.
TERRACE: 2,838 SQ.FT.
ROOF DECK: 2,998 SQ.FT.
TOTAL: 8,207 SQ.FT.



[Download Floorplan](#)

[Careers](#) • [Customer Care](#) • [Contact Us](#)

GET THE iPad APP

Available on the App Store



BCCONDOS.NET

