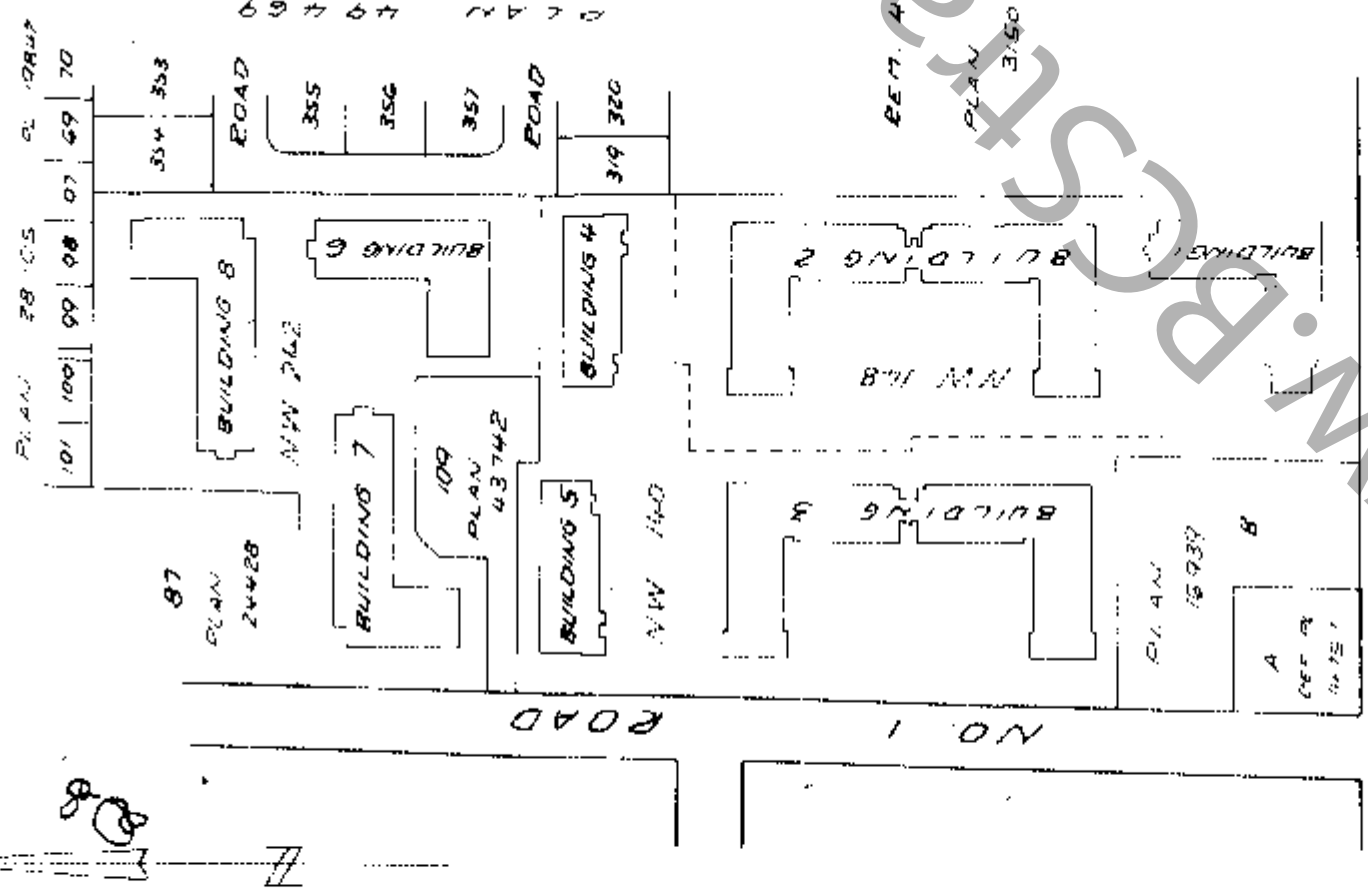


EXPLANATORY STRATA PLAN OF STRATA PLANS NW 140, NW 148 AND NW 242 OF SECTION 23 BLOCK 4 NORTH RANGE 7 WEST NEW WESTMINSTER DISTRICT. THE CORPORATION OF THE TOWNSHIP OF RICHMOND.

First Sheet 1 of 22 Sheets
STRATA PLAN NW 518
 Deposited and registered in the Land Registry Office at New Westminster, B.C. this 12th day of MAY, 1976

KEY - PLAN
 SCALE 1" = 200'



Name of development:
 'APPLE GREENE PARK'
 - A L I T A L G A T I O N -

CIVIC ADDRESSES

Building	411	FRANCIS RD
1	888	No. 1 RD
2	886	
3	884	
4	882	
5	874	
6	872	
7	876	
8		

THE COMMON SEAL OF THE OWNERS OF STRATA PLAN NW 140 WAS HEREIN OFFICED IN THE PRESENCE OF

[Signature]
 Member of Council

[Signature]
 Member of Council

THE COMMON SEAL OF THE OWNERS OF STRATA PLAN NW 148 WAS HEREIN OFFICED IN THE PRESENCE OF

[Signature]
 Member of Council

THE COMMON SEAL OF THE OWNERS OF STRATA PLAN NW 242 WAS HEREIN OFFICED IN THE PRESENCE OF

[Signature]
 Member of Council

[Signature]
 Member of Council

The address for service of documents on the Strata Corporation is:
 The Owners,
 Explanatory Strata Plan NW 518,
 c/o 4001, N.W. 12th Avenue & Byway
 4545 Kingsway
 Burnaby, B.C.

NOTE: Sheets 2-22 are a reference for strata lot numbers only for strata lots and elevations of the strata lots see Strata Plans NW 140, NW 148 or NW 242 respectively.

 President

 Director

Certified correct according to Land Registry Office Records this 15th day of MARCH, 1976

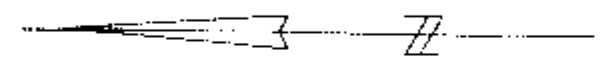
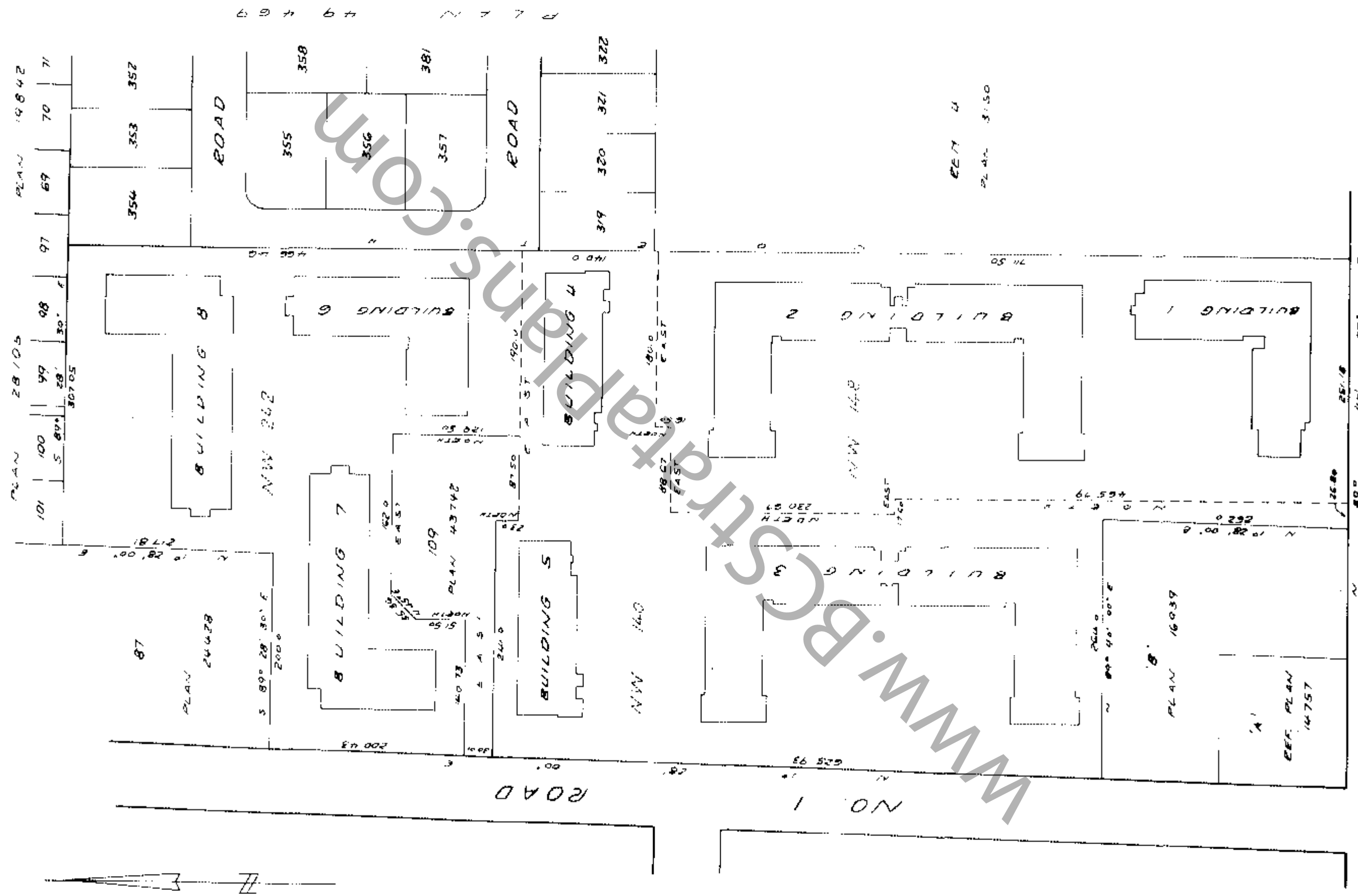
Molson, Peck & Topliss
 Surveyors & Engineers
 Registered B.C. 270 - 9674
 401 - 5210

[Signature]
 Registrar

SCALE 1" = 100'

First Sheet 2 of 22 Sheets

STRATA PLAN NW 518



FRANCIS ROAD

Molson, Peck & Toplice
 Surveyors & Engineers
 Richmond, B.C. 278-9674

Job No E-5810

Date 15.3.76

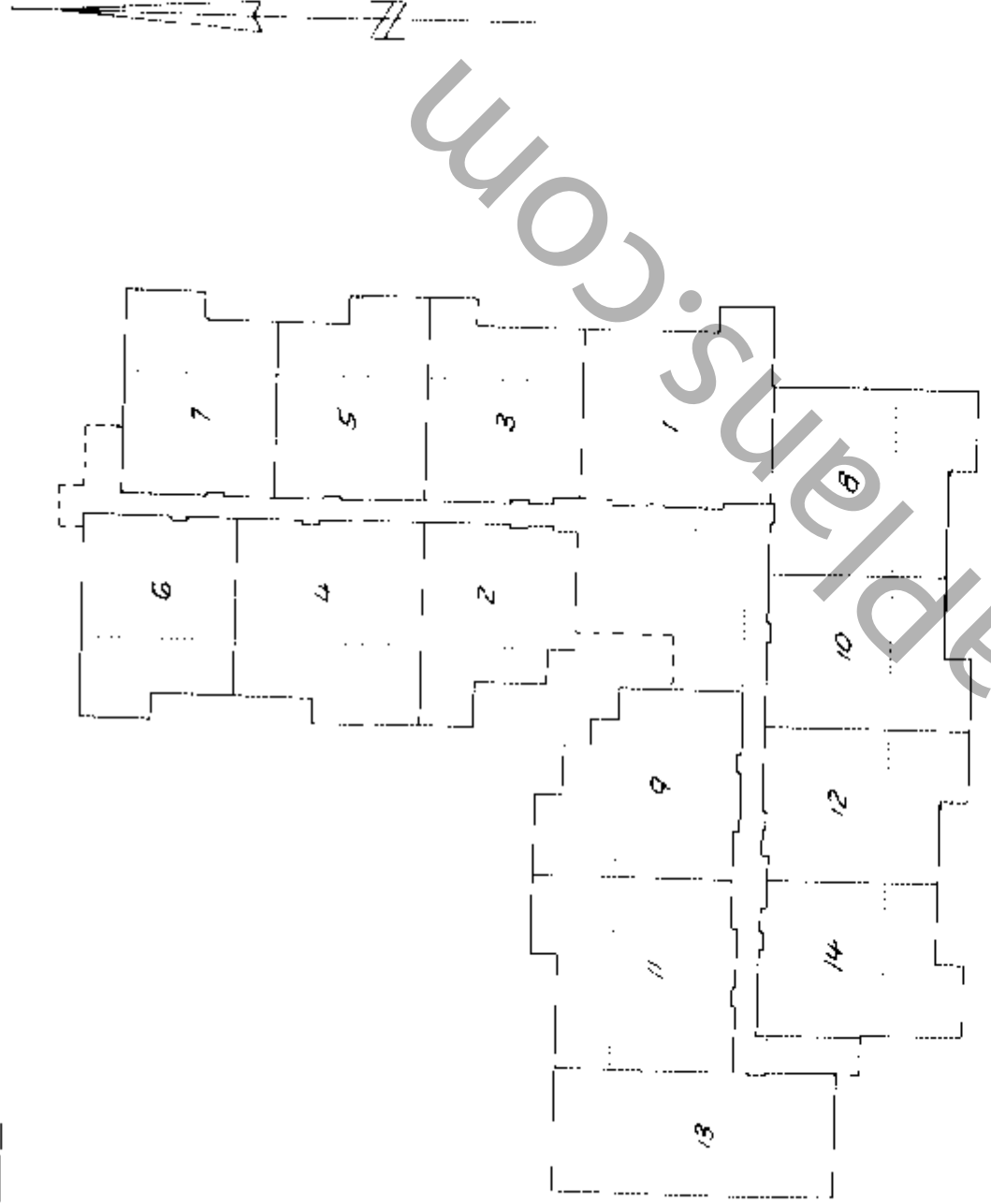
SCALE 1" = 40'

Sheet 3 of 22 Sheets

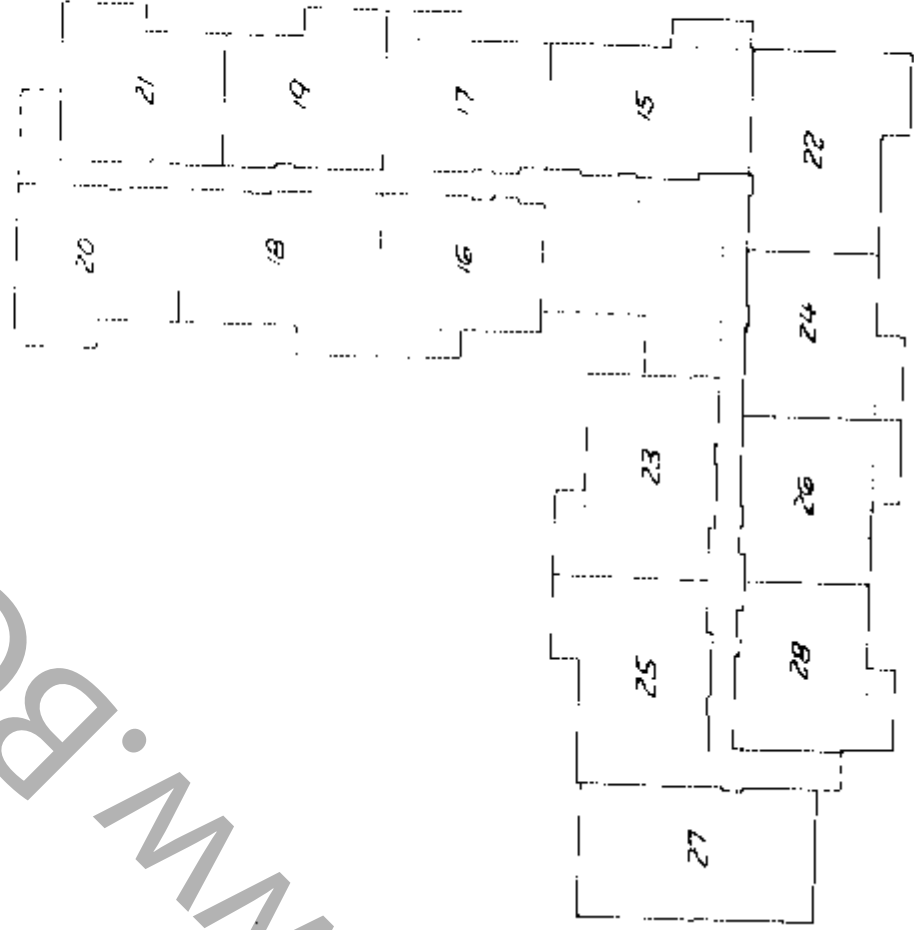
STRATA PLAN NWS18

BUILDING 1

FIRST FLOOR



SECOND FLOOR



Molson, Peck & Toplis
 Surveyors & Engineers
 Richmond, B.C. 270-9674
 Job No. E-5810

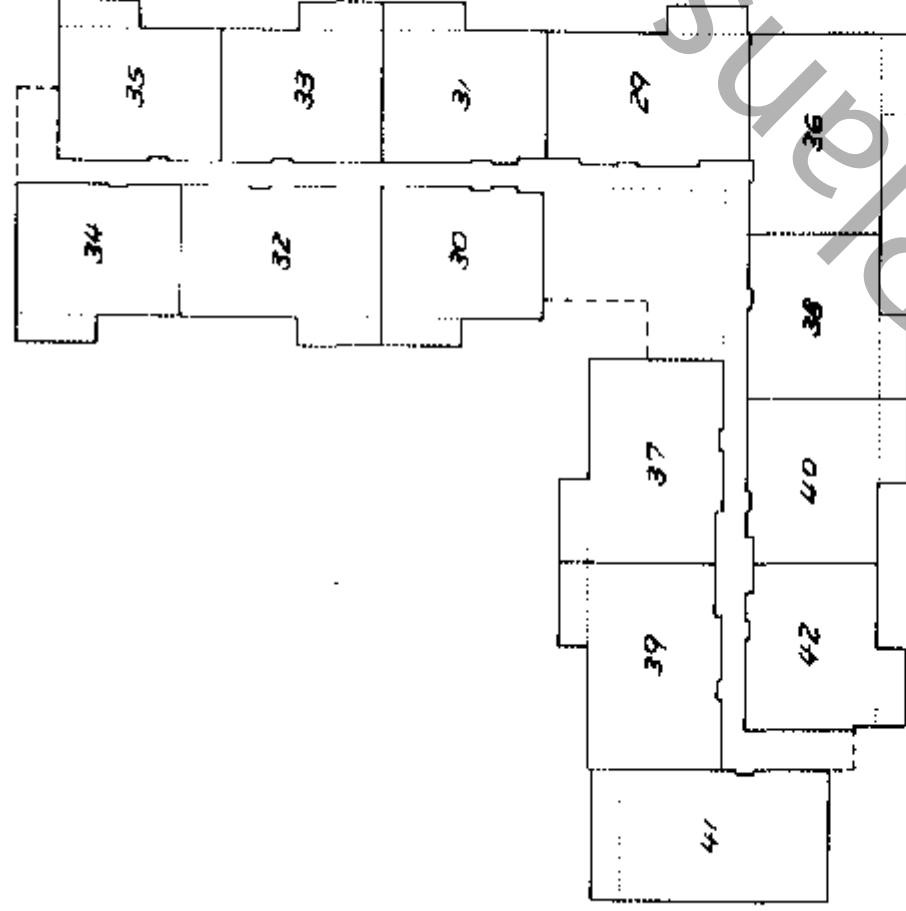
Date 15.3.76

WWW.BCStrataPlans.com

STRATA PLAN NWS18

BUILDING 1

THIRD FLOOR



WWW.BCStrataPlans.com

Molson, Peck & Toplis
Surveyors & Engineers
Richmond, B.C. P18 - 9574

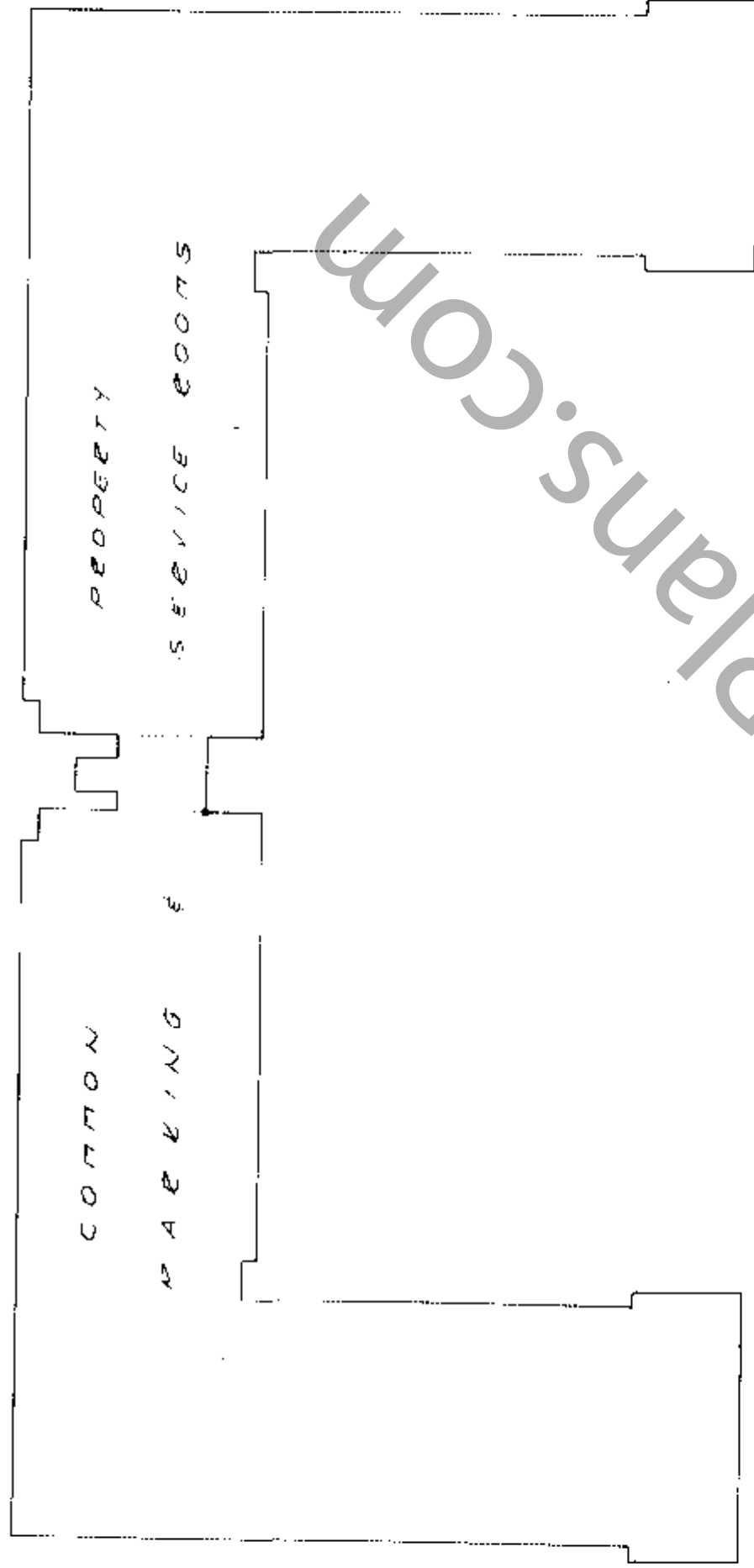
Job No. E-5810

Date 15-3-76

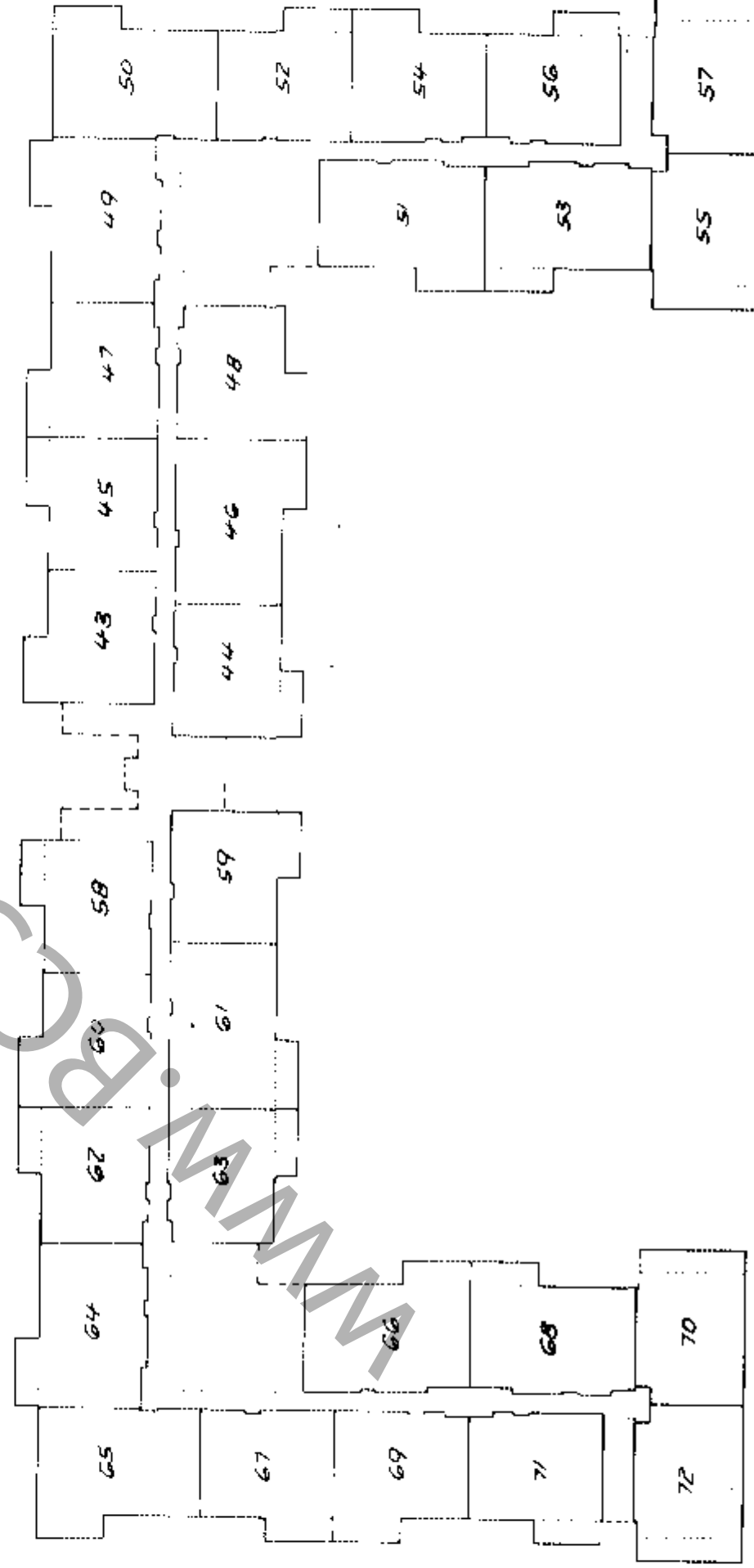
Scale 1" = 40'

BUILDING 2

BASEMENT FLOOR



FIRST FLOOR



Molson, Peck & Toplis
 Surveyors & Engineers
 Richmond, B.C. 278-9674

Job No. E-5810

Date 15.3.76 *K.L.S.*

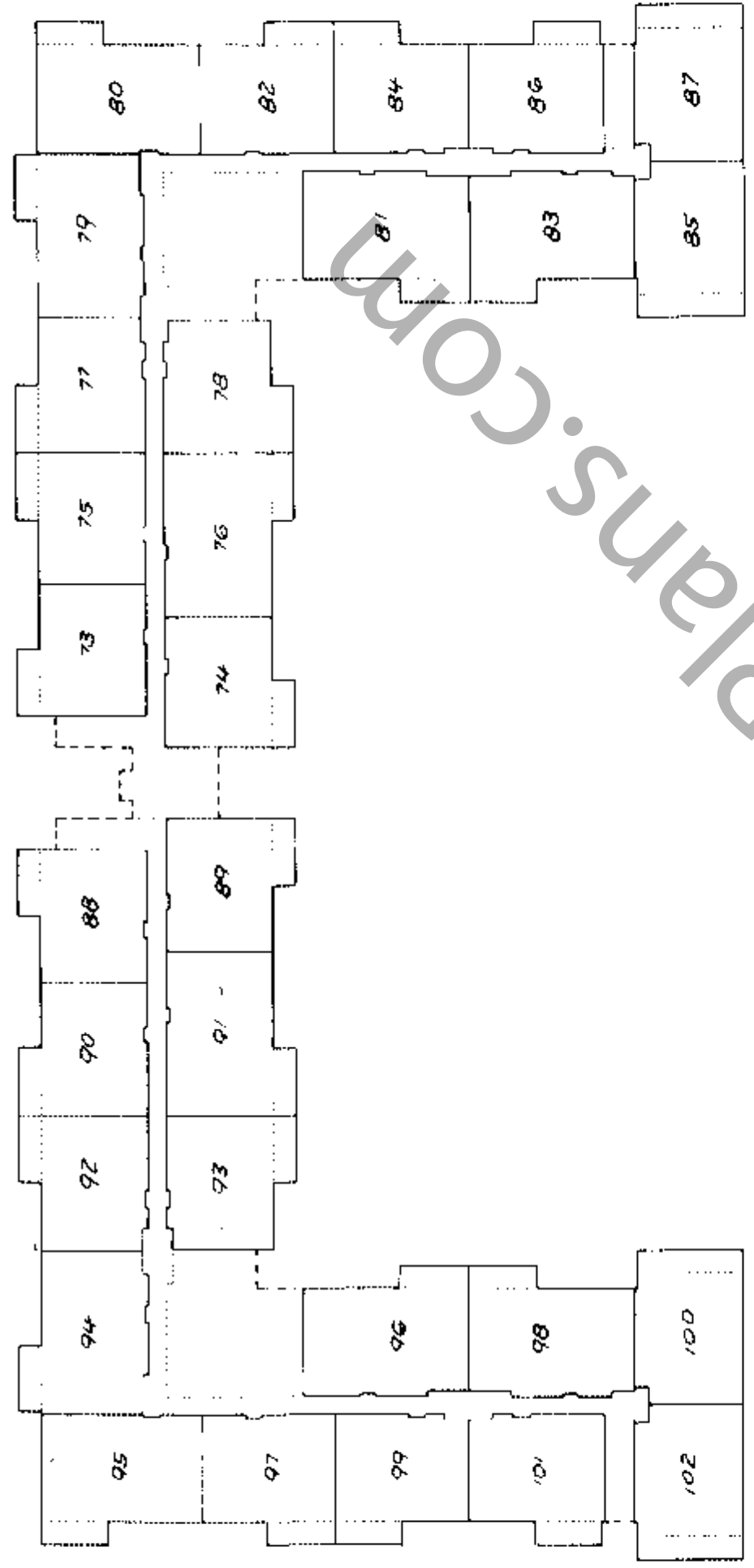
Sheet 6 of 22 Sheets
STRATA PLAN - NWS18

SCALE 1" = 40'

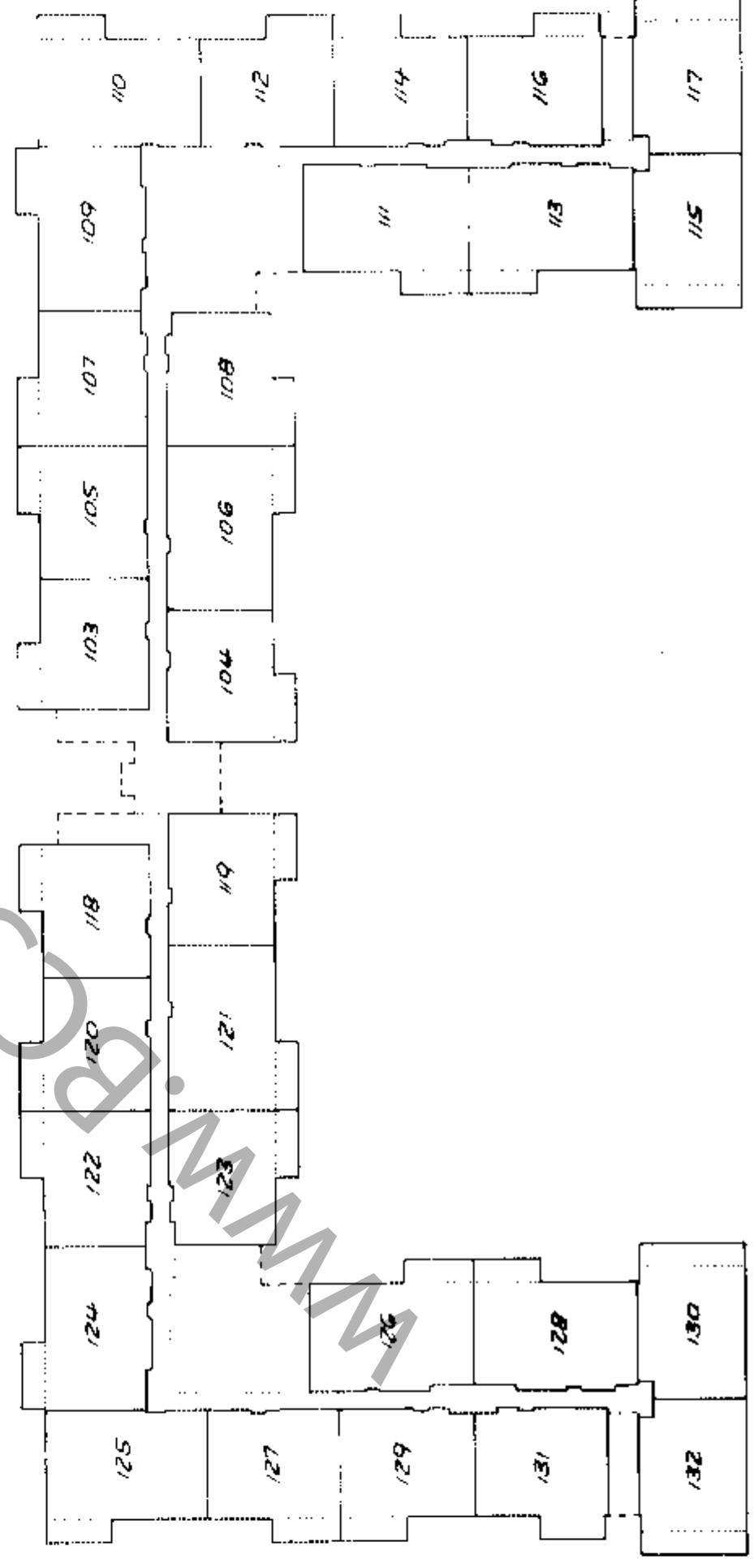
BUILDING 2



SECOND FLOOR



THIRD FLOOR



Molson, Peck & Topline
Surveyors & Engineers
Richmond, B.C. V7B-9E74
Job No. C-5810

Date 15.3.76

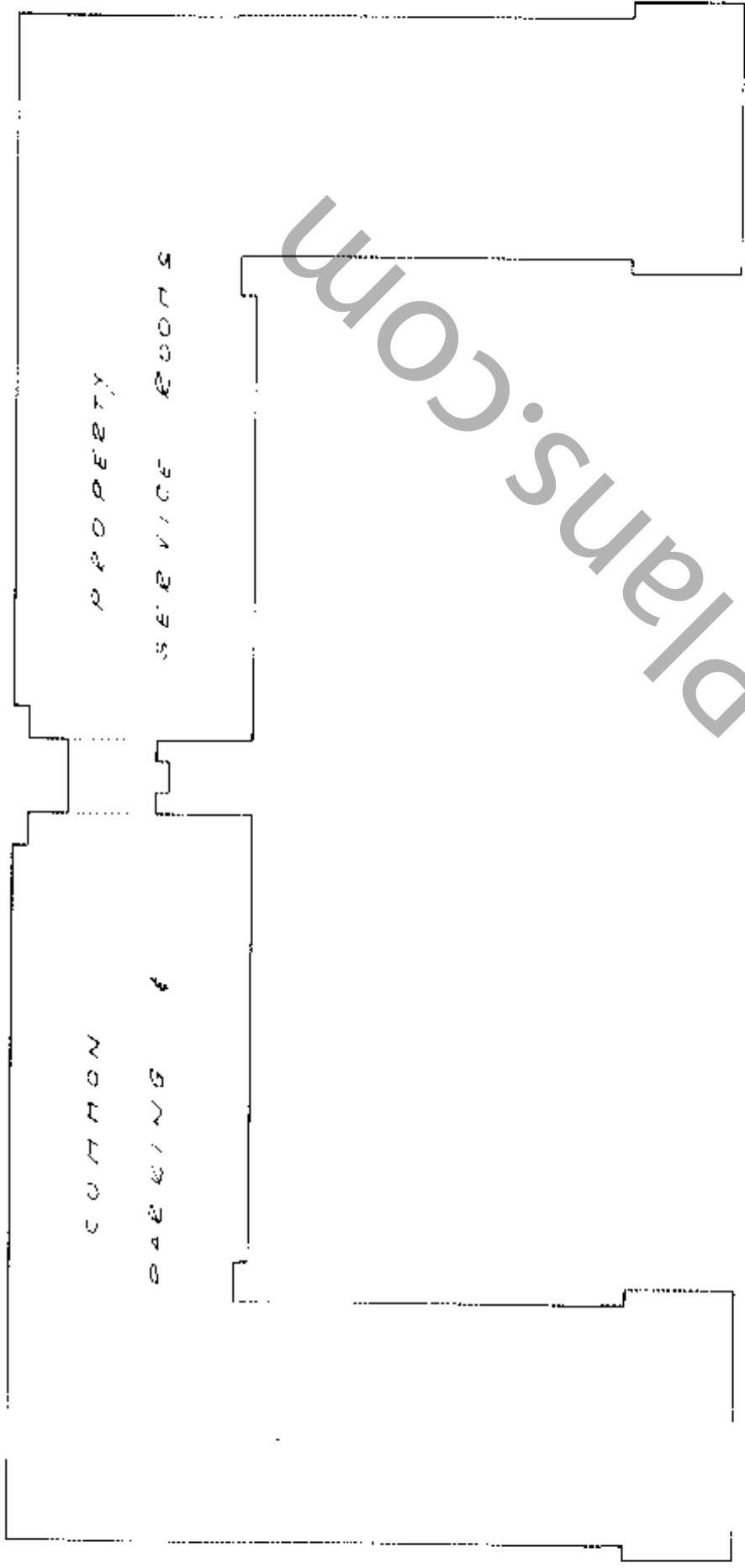
1-6-77

STRATA PLAN NWS18

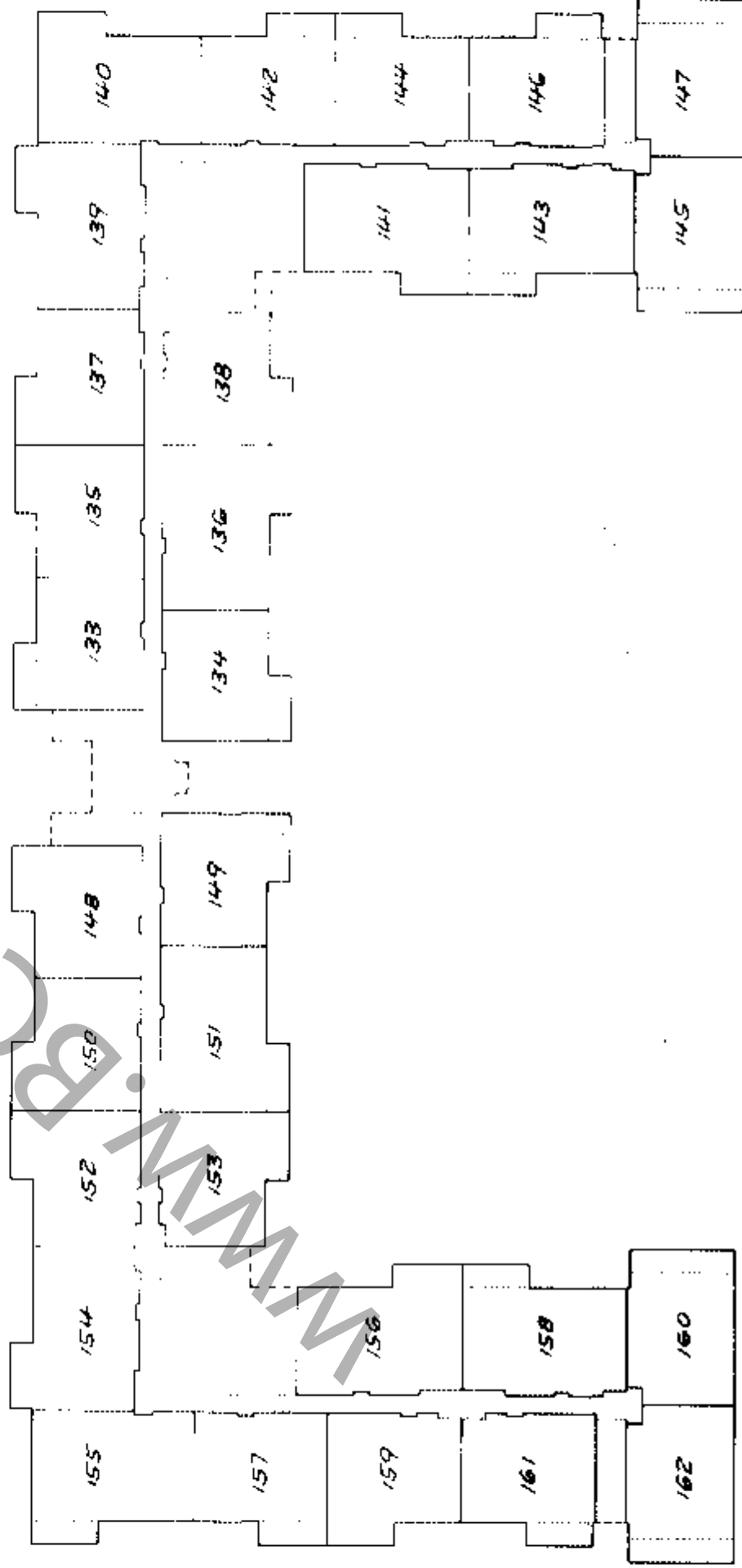
BUILDING 3



BASEMENT FLOOR



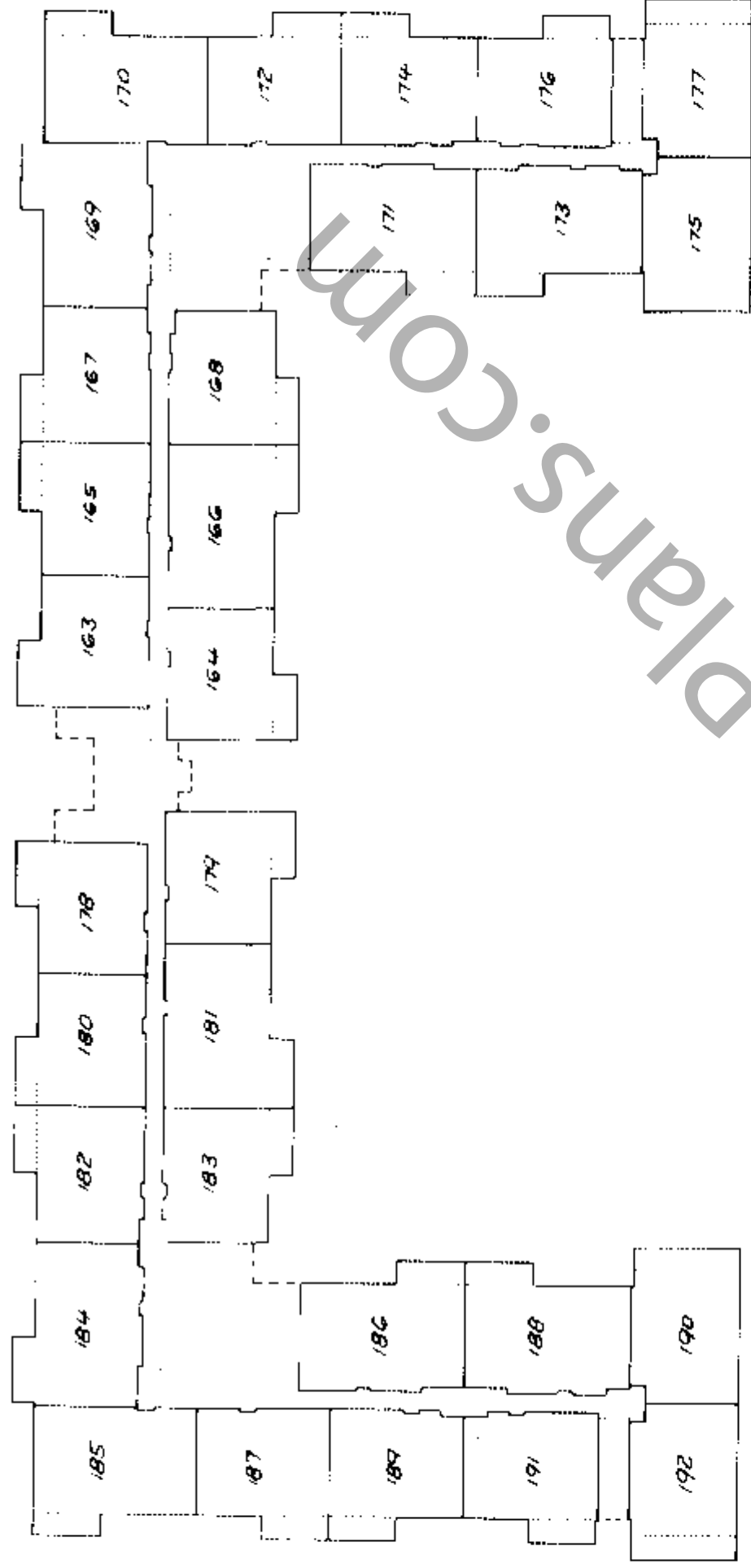
FIRST FLOOR



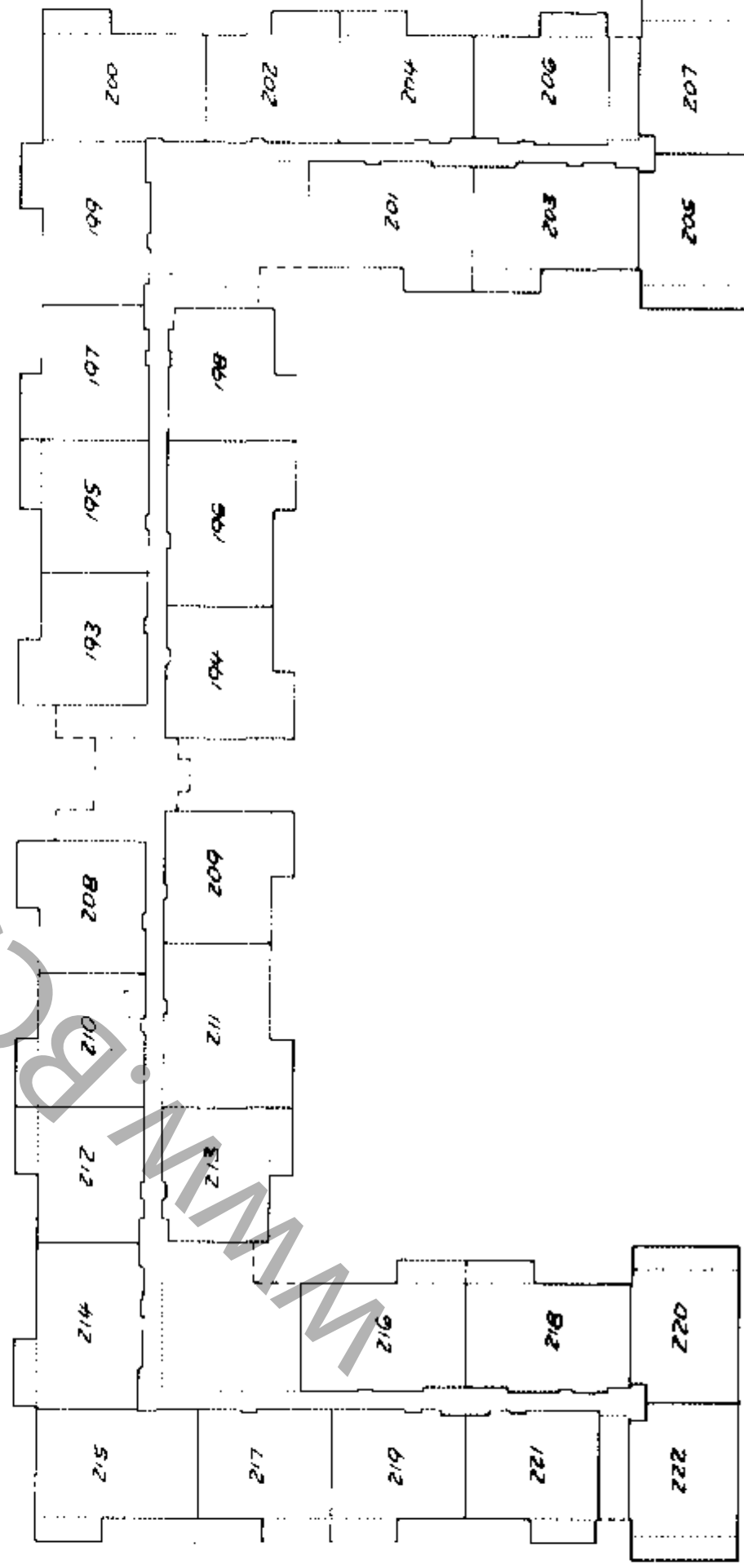
STRATA PLAN N.W.S.18

BUILDING 3

SECOND FLOOR



THIRD FLOOR



Molson, Peck & Topline
 Surveyors & Engineers
 Richmond, B.C. 278 - 9674

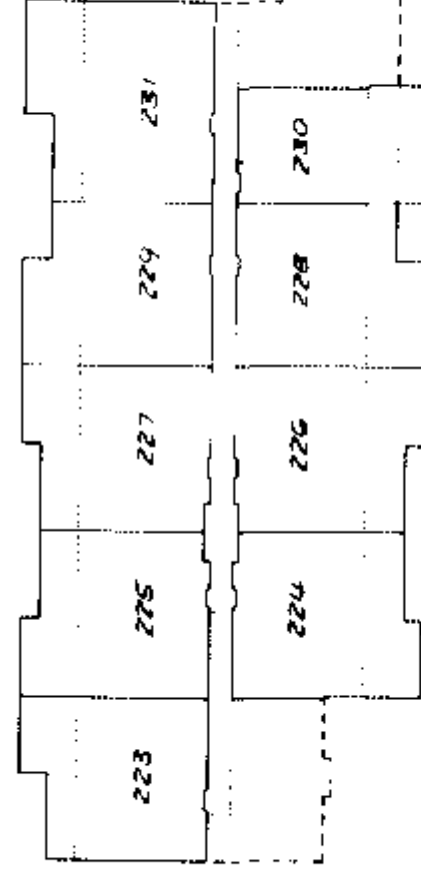
Job No. E-5810

Date 15.3.76

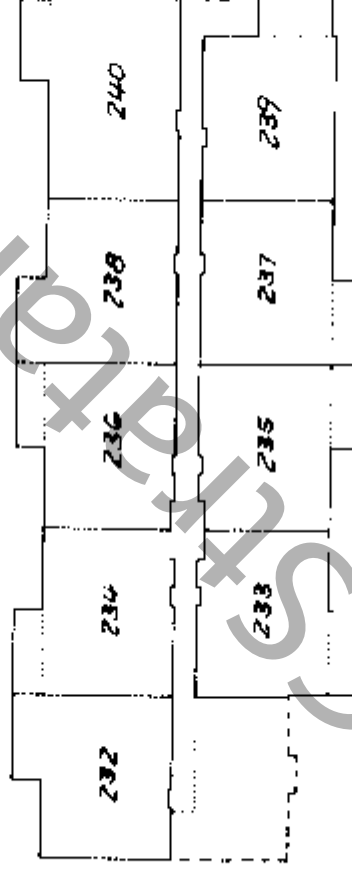
P. 2.1.5

BUILDING 4

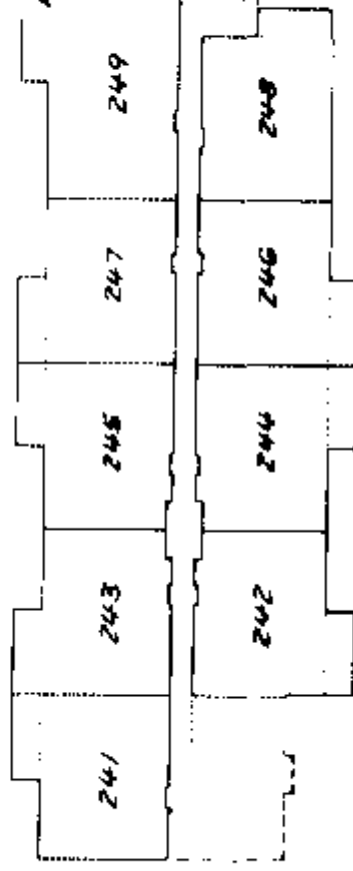
FIRST FLOOR



SECOND FLOOR



THIRD FLOOR



Molson, Peck & Toplin
 Surveyors & Engineers
 Richmond, B.C. 278-9674

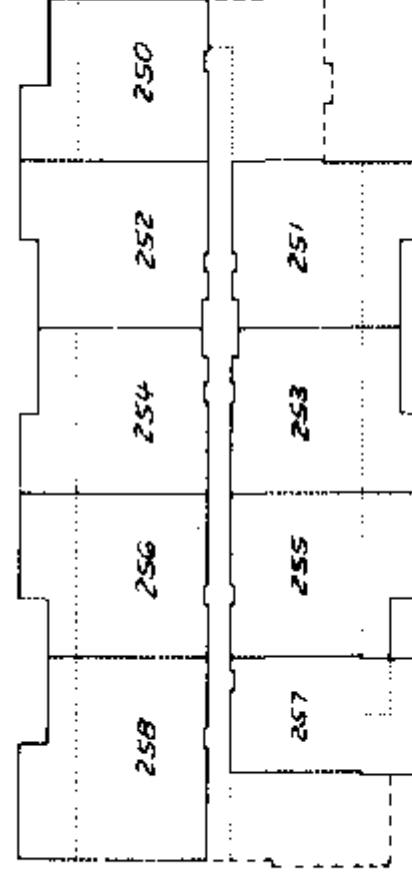
Job No. E-5810

Date 15-3-76

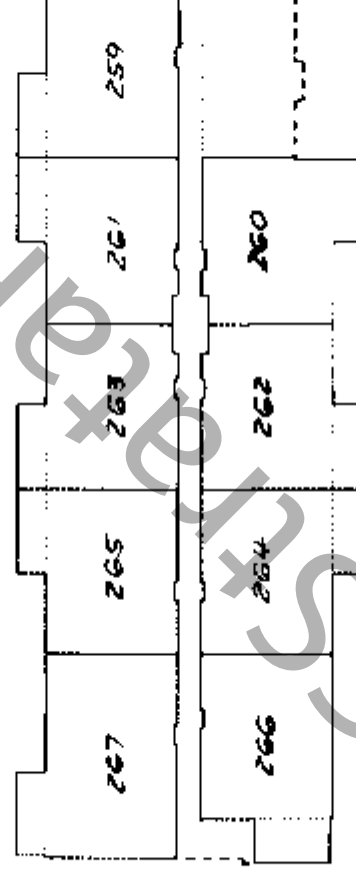
WWW.BCSplans.com

BUILDING 5

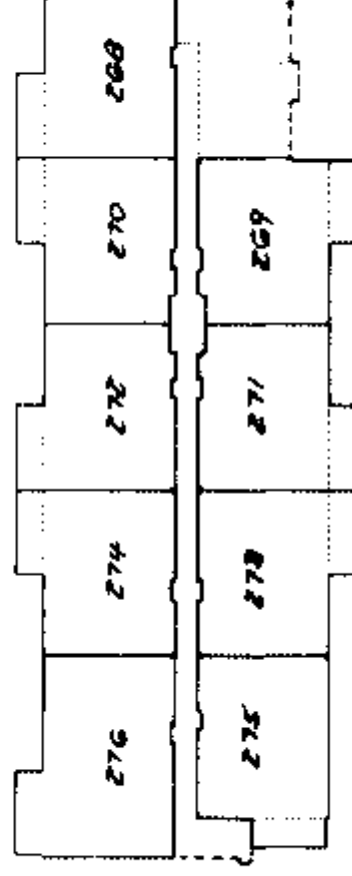
FIRST FLOOR



SECOND FLOOR



THIRD FLOOR



Mohean, Park & Toplice
Surveyors & Engineers
Richmond, B.C. 178 - 9674

Job No. C-5810

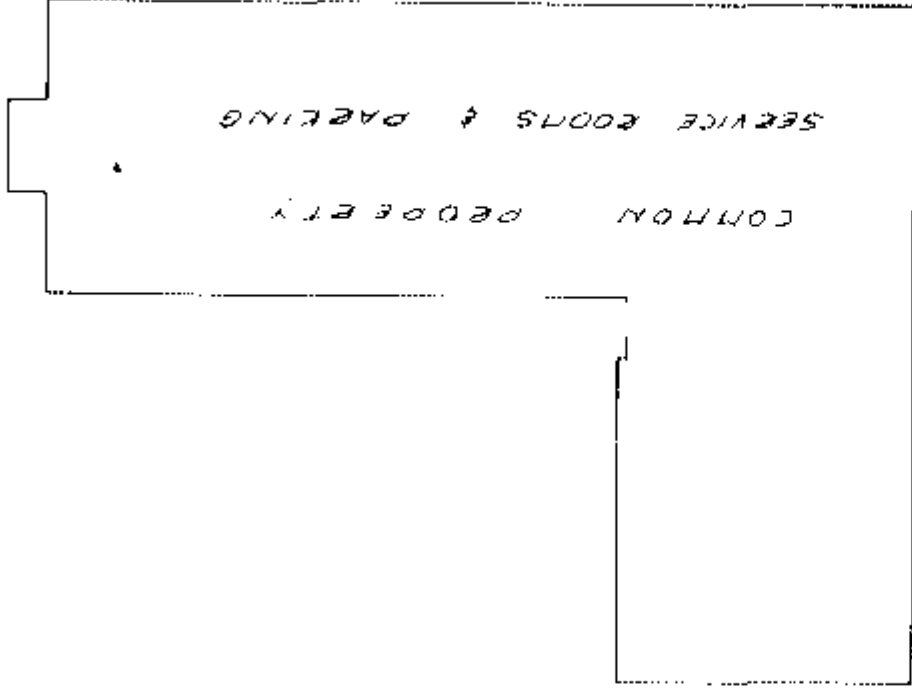
Date 12-3-76

W.W.B. Plans & S.

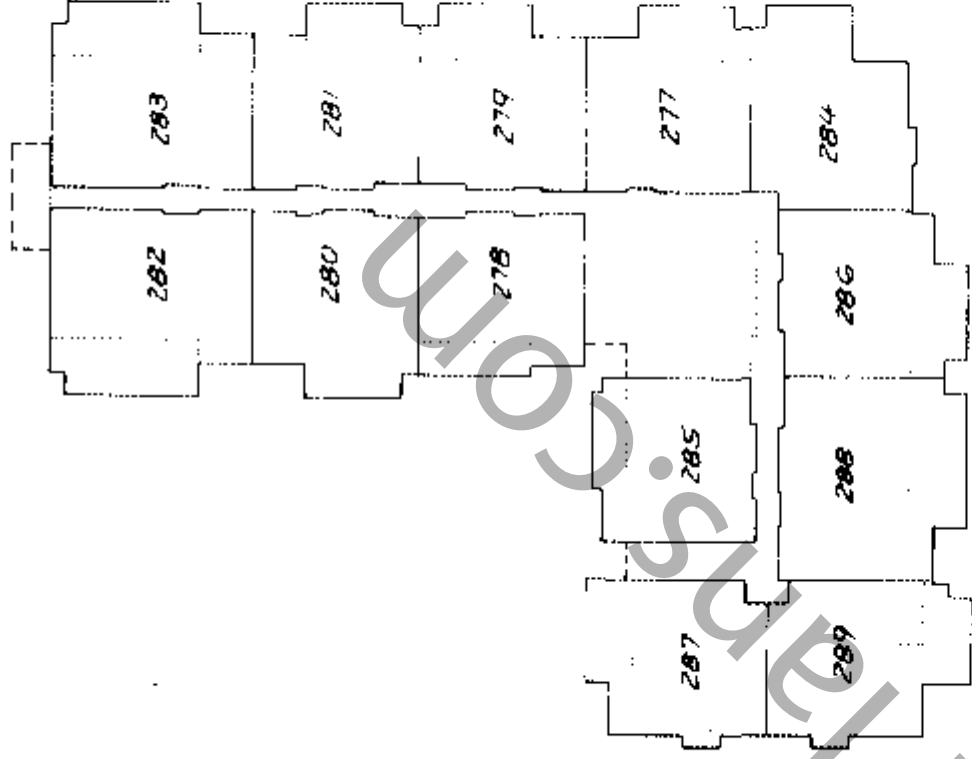
WWW.BCS.com

BUILDING 6

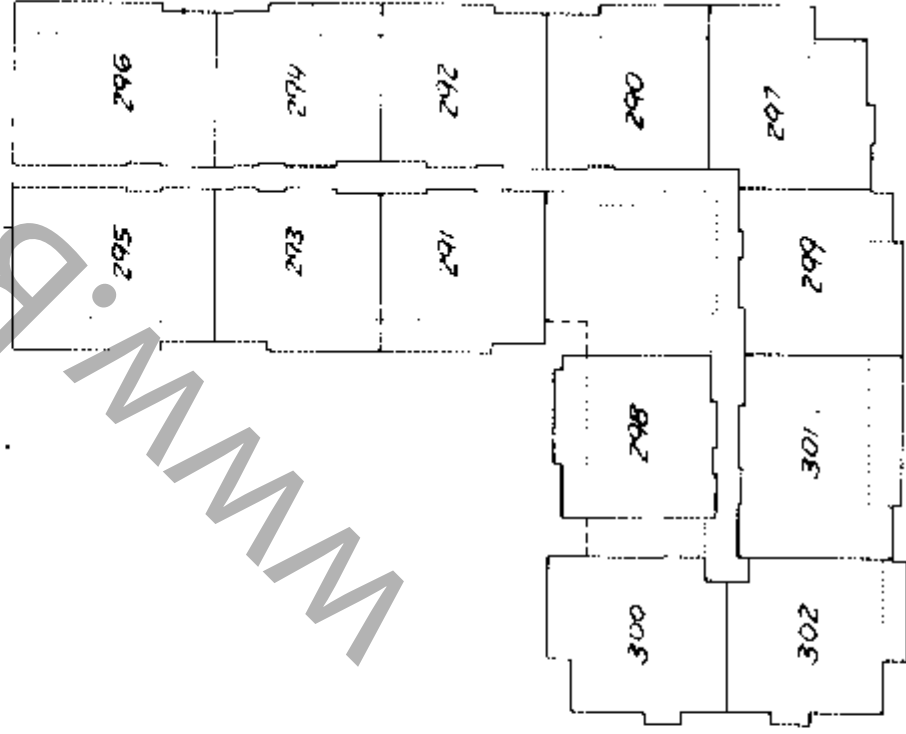
BASEMENT FLOOR



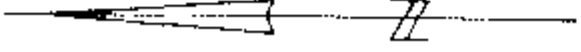
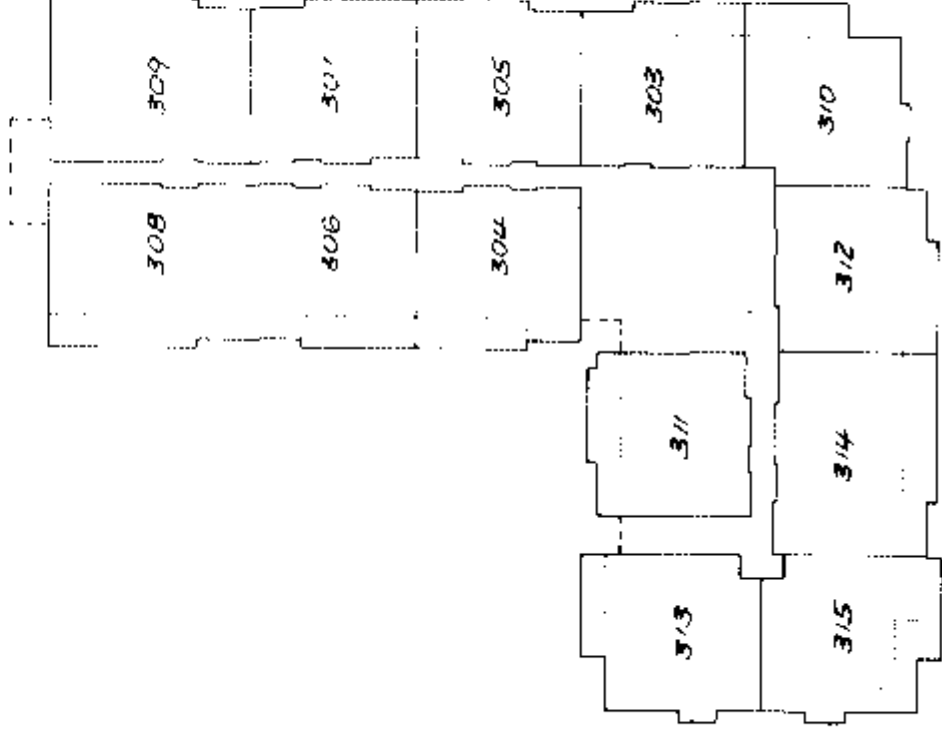
FIRST FLOOR



SECOND FLOOR



THIRD FLOOR



Molson, Peck & Topliss
Surveyors & Engineers
Richmond, B.C. 278-9674

Job No. E-5810

Date 15.3.76

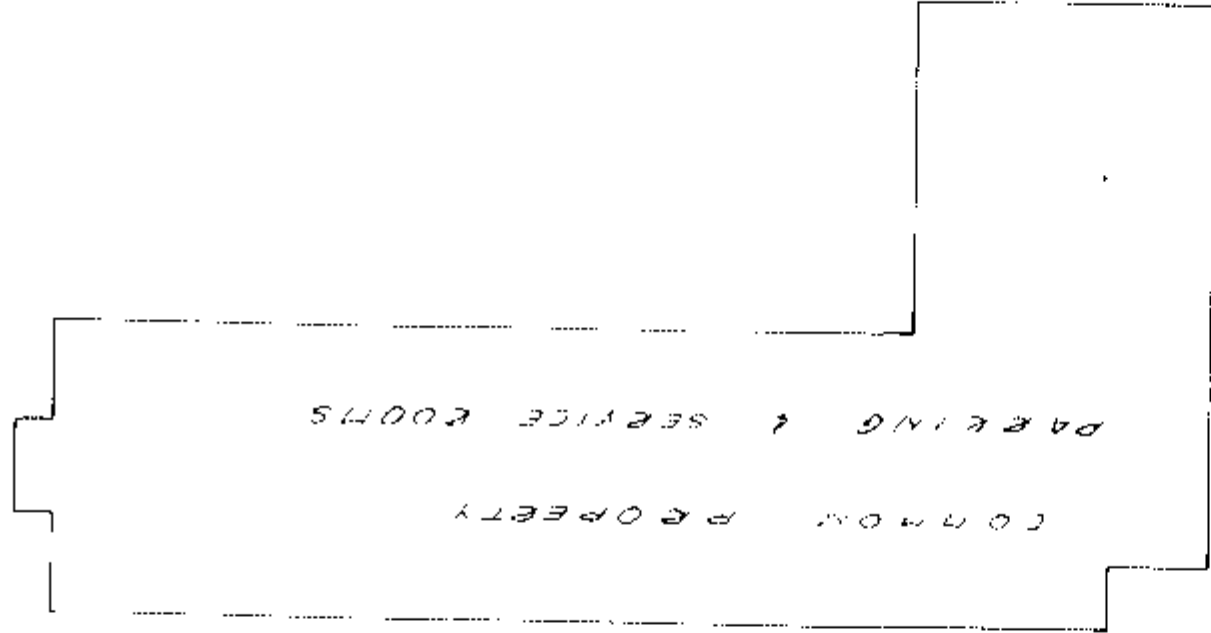
8-1-5

STRATA PLAN NW 518

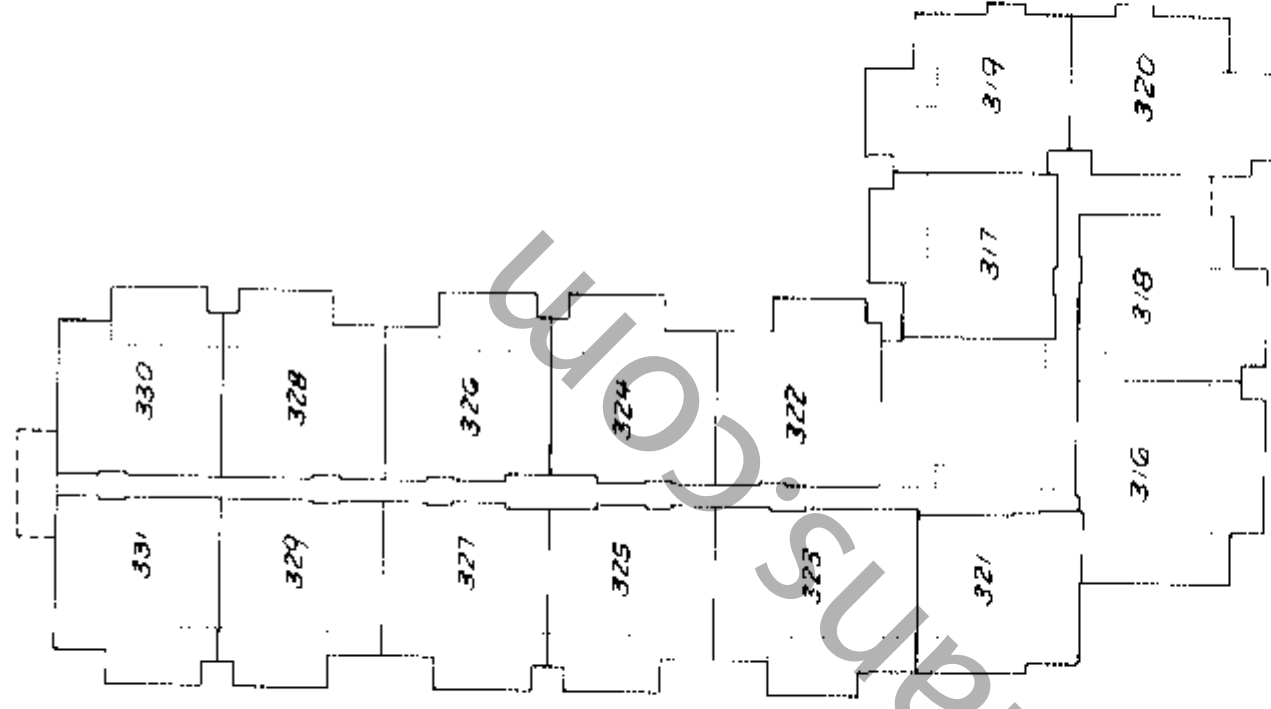
BUILDING 7



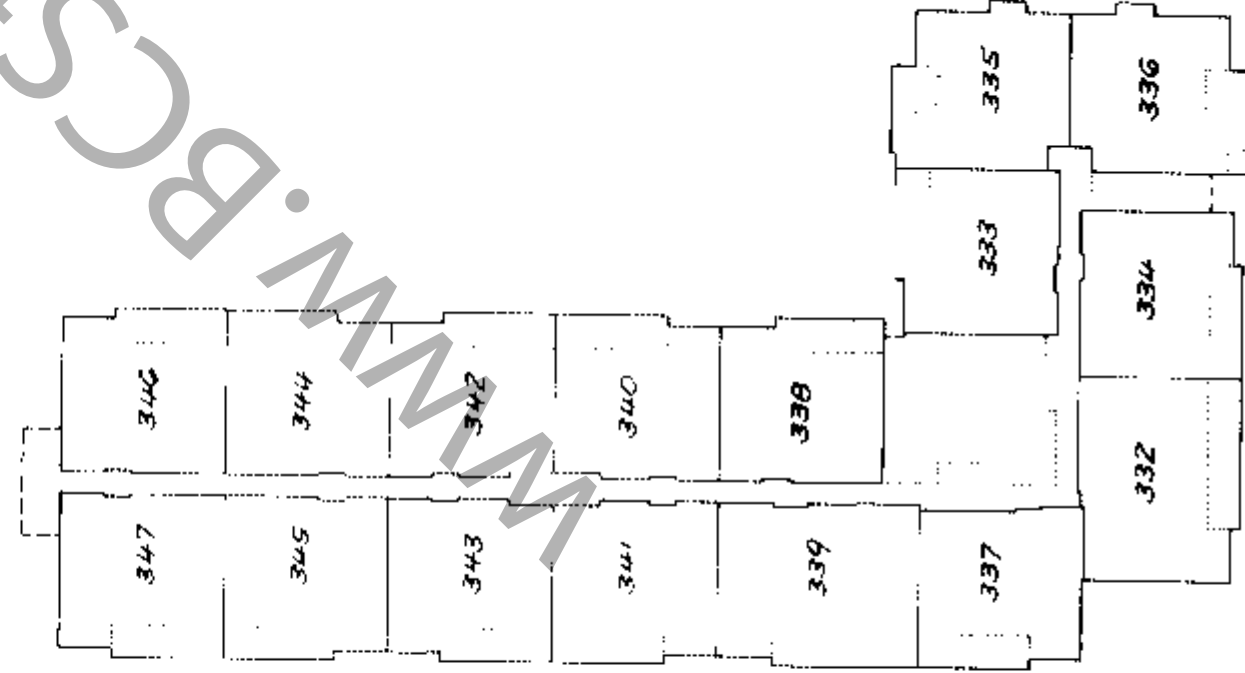
BASEMENT FLOOR



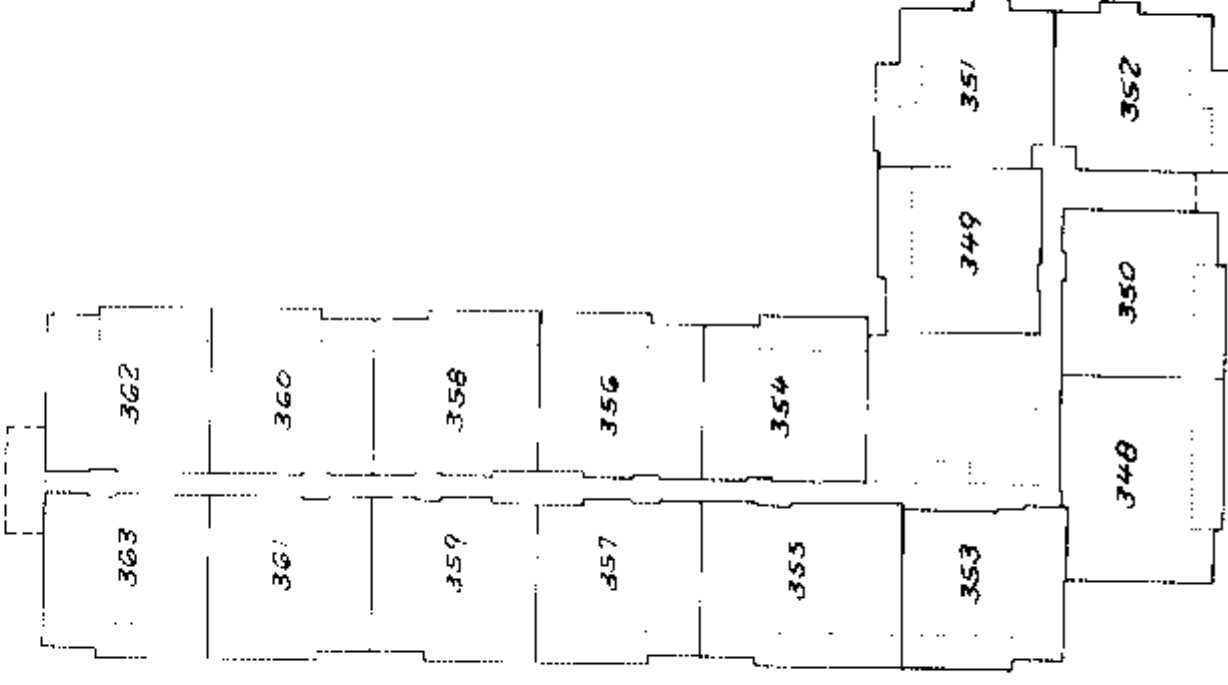
FIRST FLOOR



SECOND FLOOR



THIRD FLOOR



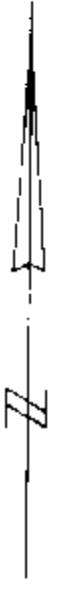
Molson, Park & Topfias
Surveyors & Engineers
Richmond, B.C. 278-9674

Job No. E-5810

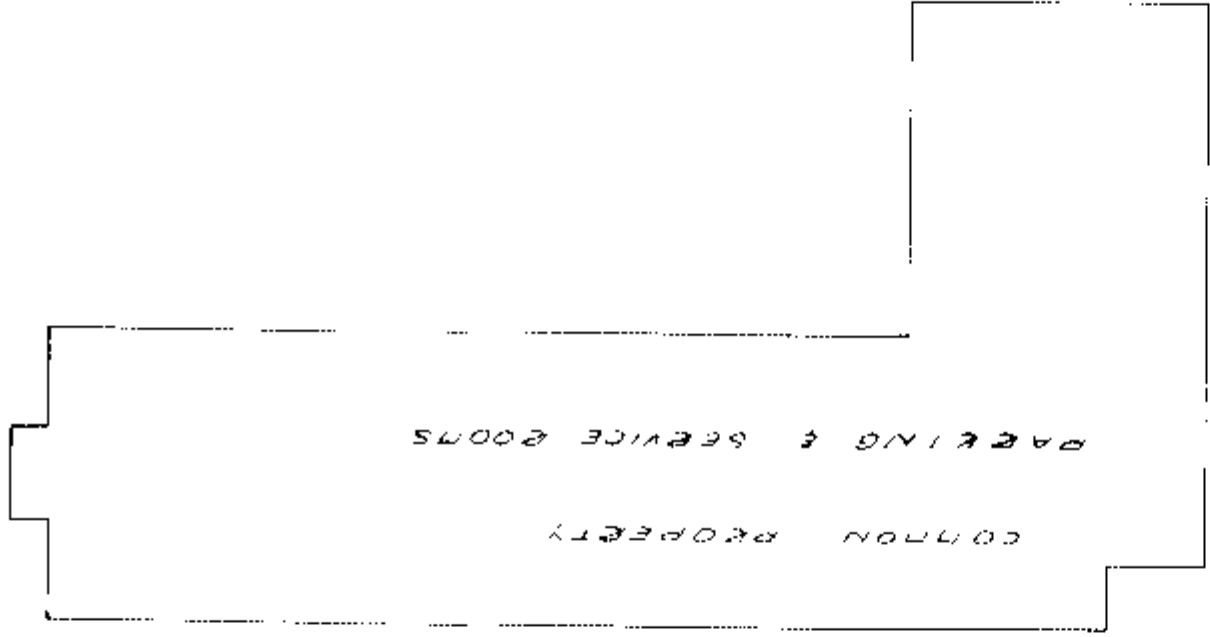
Date 15.3.76

K. J. C. L. S.

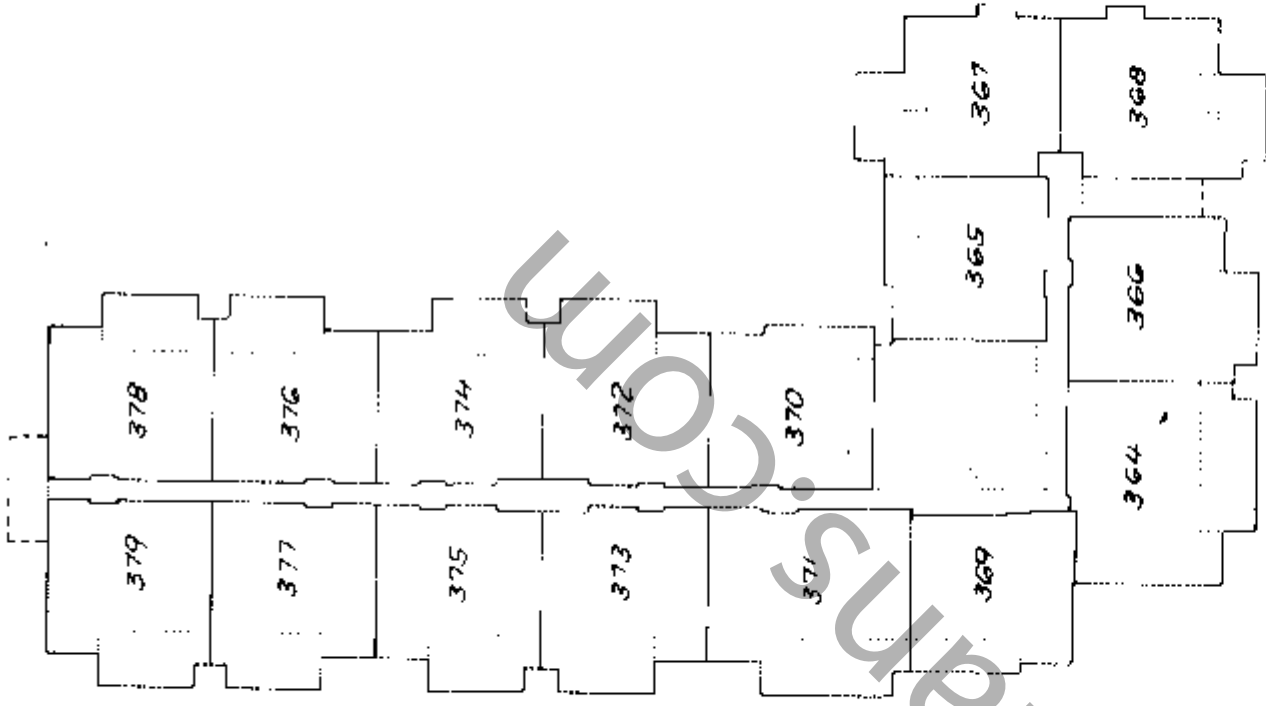
BUILDING 8



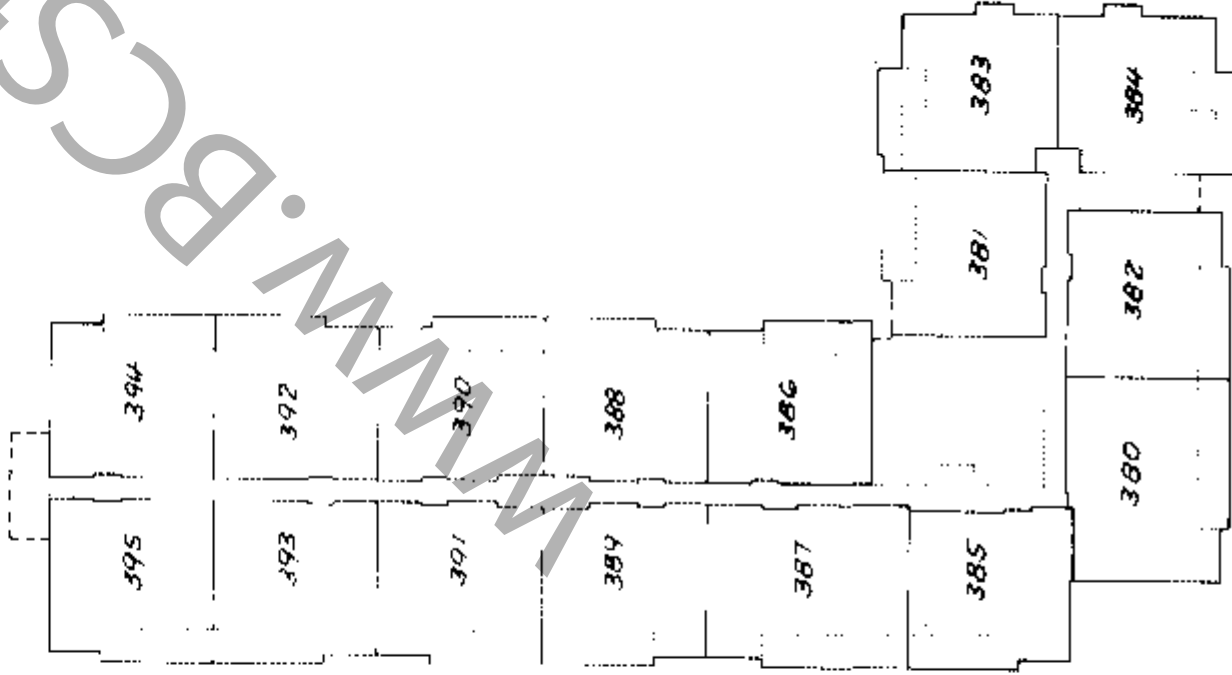
BASEMENT FLOOR



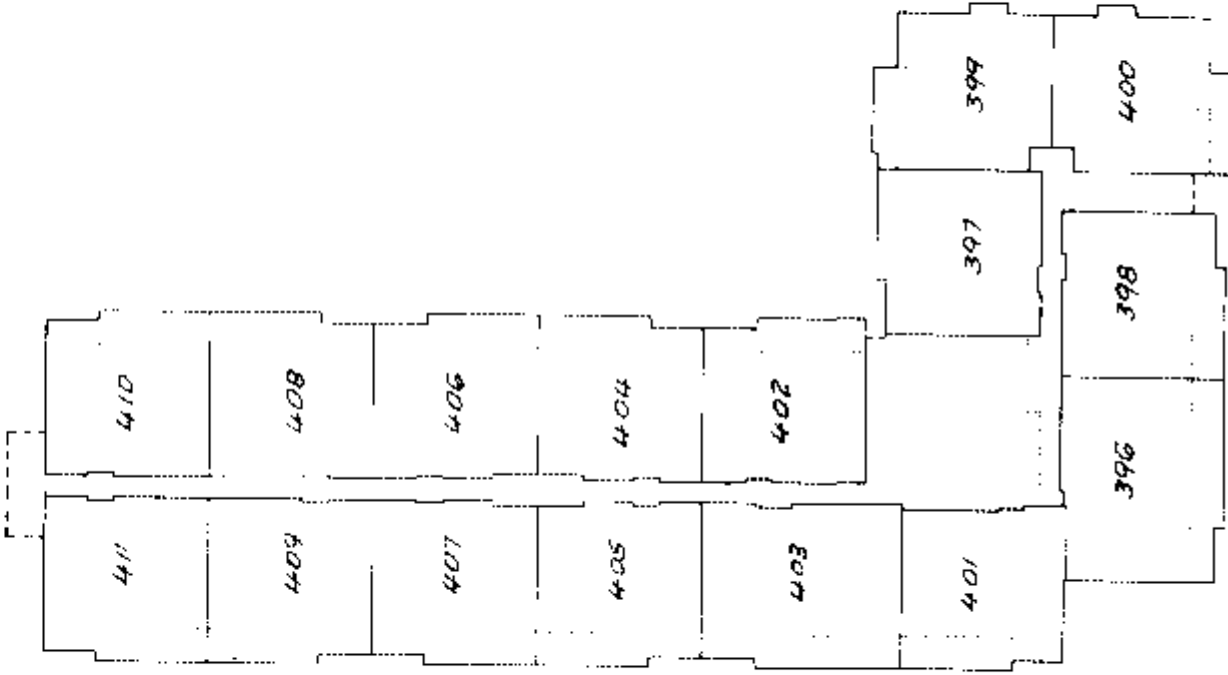
FIRST FLOOR



SECOND FLOOR



THIRD FLOOR



Molson, Peck & Topliss
Surveyors & Engineers
Richmond, B.C. 278-9674

Job No. E-5810

Date 15-3-76

K. C. I. S.

STRATA TITLES ACT

NEW LOT NO.	OLD LOT STRATA PLAN NO.	FORM 1		FORM 2		FORM 3	
		SCHEDULE OF UNIT ENTITLEMENT	SCHEDULE OF INTEREST UPON DESTRUCTION	SCHEDULE OF INTEREST UPON DESTRUCTION	SCHEDULE OF VOTING RIGHTS		
		UNIT ENTITLEMENT	INTEREST UPON DESTRUCTION	INTEREST UPON DESTRUCTION	NUMBER OF VOTES		
1	148	4760		50 717			
2	148	4260		47 616			
3	148	4260		48 034			
4	148	4760		51 168			
5	148	4260		47 895			
6	148	4260		47 570			
7	148	4260		47 570			
8	148	4760		50 963			
9	148	4760		51 250			
10	148	4260		47 895			
11	148	4760		48 034			
12	148	4260		51 250			
13	148	4760		48 034			
14	148	4260		51 168			
15	148	4260		54 858			
16	148	4260		47 942			
17	148	4260		50 717			
18	148	4260		47 616			
19	148	4260		48 034			
20	148	4260		51 168			
21	148	4260		47 895			
22	148	4760		47 570			
23	148	4760		47 570			
24	148	4760		50 963			
25	148	4260		51 250			
26	148	4260		47 895			
27	148	4760		48 034			
28	148	4260		54 858			
29	148	4260		47 942			
30	148	4260		50 717			
31	148	4260		47 616			
32	148	4760		48 034			
33	148	4260		51 168			
34	148	4260		47 895			
35	148	4260		47 570			
36	148	4260		47 570			
37	148	4760		50 963			
38	148	4260		51 250			
39	148	4760		47 895			
40	148	4260		48 034			
41	148	4260		54 858			
42	148	4260		47 942			
43	148	4260		50 717			
44	148	4260		47 616			
45	148	4260		48 034			
46	148	4760		51 168			
47	148	4260		47 895			
48	148	4260		47 570			
49	148	4260		47 570			
50	148	4260		50 963			
51	148	4760		51 250			
52	148	4260		47 895			
53	148	4260		48 034			
54	148	4260		47 616			
55	148	4260		50 717			
56	148	4260		50 963			
57	148	4260		51 086			
58	148	4260		47 895			
59	148	4260		50 758			
60	148	4260		48 034			
		4260		49 616			
		4260		47 988			
		4260		49 616			
		4260		47 570			
		4260		47 570			
		4260		47 895			

Molson, Peck & Topliss
Surveyors & Engineers
Richmond, B.C. 770-9674

STRATA PLAN NWS18

STRATA TITLES ACT

NEW LOT NO	OLD LOT NO	FROM STRATA PLAN	FORM 1	FORM 2	FORM 3
			SCHEDULE OF UNIT ENTITLEMENT	SCHEDULE OF INTEREST UPON DESTRUCTION	SCHEDULE OF VOTING RIGHTS
UNIT ENTITLEMENT			INTEREST UPON DESTRUCTION	NUMBER OF VOTES	
61	148	61	4760	51 168	
62	148	62	4260	48 034	
63	148	63	4260	47 616	
64	148	64	4760	50 717	
65	148	65	4760	50 963	
66	148	66	4760	51 086	
67	148	67	4260	07 895	
68	148	68	4760	50 758	
69	148	69	4260	48 034	
70	148	70	4260	49 616	
71	148	71	4260	47 988	
72	148	72	4260	49 616	
73	148	73	4260	47 570	
74	148	74	4260	41 570	
75	148	75	4260	47 895	
76	148	76	4760	51 168	
77	148	77	4260	48 034	
78	148	78	4260	47 616	
79	148	79	4760	50 717	
80	148	80	4760	50 963	
81	148	81	4760	51 086	
82	148	82	4260	47 895	
83	148	83	4760	50 758	
84	148	84	4260	48 034	
85	148	85	4260	49 616	
86	148	86	4260	47 988	
87	148	87	4260	49 616	
88	148	88	4260	47 570	
89	148	89	4260	47 570	
90	148	90	4260	47 895	
91	148	91	4760	51 168	
92	148	92	4260	48 034	
93	148	93	4260	47 616	
94	148	94	4760	50 717	
95	148	95	4760	50 963	
96	148	96	4760	51 086	
97	148	97	4260	47 895	
98	148	98	4260	50 758	
99	148	99	4260	48 034	
100	148	100	4260	49 616	
101	148	101	4260	49 616	
102	148	102	4260	47 988	
103	148	103	4260	49 616	
104	148	104	4760	47 570	
105	148	105	4260	47 895	
106	148	106	4760	51 168	
107	148	107	4260	48 034	
108	148	108	4260	47 616	
109	148	109	4760	50 717	
110	148	110	4760	50 963	
111	148	111	4760	51 086	
112	148	112	4260	47 895	
113	148	113	4760	50 758	
114	148	114	4260	48 034	
115	148	115	4260	49 616	
116	148	116	4260	49 616	
117	148	117	4260	47 988	
118	148	118	4260	49 616	
119	148	119	4260	47 570	
120	148	120	4260	47 570	

Second Sheet 16 of 22 Sheets
 STRATA PLAN NWS18

STRATA TITLES ACT

NEW LOT NO	OLD LOT NO	FROM STRATA PLAN	FORM 1		FORM 2		FORM 3	
			SCHEDULE OF UNIT ENTITLEMENT	SCHEDULE OF INTEREST UPON DESTRUCTION	SCHEDULE OF INTEREST UPON DESTRUCTION	SCHEDULE OF VOTING RIGHTS		
			UNIT ENTITLEMENT	INTEREST UPON DESTRUCTION	INTEREST UPON DESTRUCTION	NUMBER OF VOTES		
121	121	148	4760		51 168			
122	122	148	4260		48 034			
123	123	148	4260		47 616			
124	124	148	4760		50 717			
125	125	148	4760		50 963			
126	126	148	4760		51 086			
127	127	148	4760		47 895			
128	128	148	4760		50 758			
129	129	148	4260		48 034			
130	130	148	4260		49 616			
131	131	148	4260		47 988			
132	132	148	4260		49 616			
133	133	148	4260		47 570			
134	134	148	4260		47 570			
135	135	148	4260		47 895			
136	136	148	4260		51 168			
137	137	148	4260		48 034			
138	138	148	4260		47 616			
139	139	148	4260		47 988			
140	140	148	4260		49 616			
141	141	148	4260		48 034			
142	142	148	4260		49 616			
143	143	148	4260		47 988			
144	144	148	4260		49 616			
145	145	148	4260		48 034			
146	146	148	4260		47 616			
147	147	148	4260		47 988			
148	148	148	4260		49 616			
149	149	148	4260		48 034			
150	150	148	4260		47 616			
151	151	148	4260		47 988			
152	152	148	4260		49 616			
153	153	148	4260		48 034			
154	154	148	4260		47 616			
155	155	148	4260		47 988			
156	156	148	4260		49 616			
157	157	148	4260		48 034			
158	158	148	4260		47 616			
159	159	148	4260		47 988			
160	160	148	4260		49 616			
161	161	148	4260		48 034			
162	162	148	4260		47 616			
163	163	148	4260		47 988			
164	164	148	4260		49 616			
165	165	148	4260		48 034			
166	166	148	4260		47 616			
167	167	148	4260		47 988			
168	168	148	4260		49 616			
169	169	148	4260		48 034			
170	170	148	4260		47 616			
171	171	148	4260		47 988			
172	172	148	4260		49 616			
173	173	148	4260		48 034			
174	174	148	4260		47 616			
175	175	148	4260		47 988			
176	176	148	4260		49 616			
177	177	148	4260		48 034			
178	178	148	4260		47 616			
179	179	148	4260		47 988			
180	180	148	4260		49 616			

Molson, Peck & Toplis
 Surveyors & Engineers
 Richmond, B.C. 778-9674

J N.S. E-5810 Date 15.3.76

Second Sheet 17 of 22 Sheets

STRATA PLAN NWS18

STRATA TITLES ACT

NEW LOT NO.	OLD LOT STRATA NO. PLAN	FECT	FORM 1		FORM 2		FORM 3	
			SCHEDULE OF UNIT ENTITLEMENT	SCHEDULE OF INTEREST UPON DESTRUCTION	SCHEDULE OF INTEREST UPON DESTRUCTION	SCHEDULE OF VOTING RIGHTS		
			UNIT ENTITLEMENT	INTEREST UPON DESTRUCTION	INTEREST UPON DESTRUCTION	NUMBER OF VOTES		
181	103	140	4760	51 168				
182	104	140	4260	48 034				
183	105	140	4260	47 616				
184	106	140	4760	50 717				
185	107	140	4760	50 085				
186	108	140	4760	51 086				
187	109	140	4260	47 895				
188	110	140	4260	50 758				
189	111	140	4260	48 034				
190	112	140	4260	49 616				
191	113	140	4260	47 988				
192	114	140	4260	49 616				
193	115	140	4260	47 570				
194	116	140	4260	47 895				
195	117	140	4260	51 168				
196	118	140	4260	48 034				
197	119	140	4260	47 616				
198	120	140	4260	41 988				
199	121	140	4260	49 616				
200	122	140	4260	47 570				
201	123	140	4260	47 895				
202	124	140	4260	50 717				
203	125	140	4260	50 085				
204	126	140	4260	51 086				
205	127	140	4260	47 895				
206	128	140	4260	50 158				
207	129	140	4260	48 034				
208	130	140	4260	47 616				
209	131	140	4260	41 988				
210	132	140	4260	49 616				
211	133	140	4260	47 570				
212	134	140	4260	47 895				
213	135	140	4260	50 717				
214	136	140	4260	50 085				
215	137	140	4260	51 086				
216	138	140	4260	47 895				
217	139	140	4260	50 158				
218	140	140	4260	48 034				
219	141	140	4260	47 616				
220	142	140	4260	41 988				
221	143	140	4260	49 616				
222	144	140	4260	47 570				
223	145	140	4260	47 895				
224	146	140	4260	50 717				
225	147	140	4260	50 085				
226	148	140	4260	51 086				
227	149	140	4260	47 895				
228	150	140	4260	50 158				
229	151	140	4260	48 034				
230	152	140	4260	47 616				
231	153	140	4260	41 988				
232	154	140	4260	49 616				
233	155	140	4260	47 570				
234	156	140	4260	47 895				
235	157	140	4260	50 717				
236	158	140	4260	50 085				
237	159	140	4260	51 086				
238	160	140	4260	47 895				
239	161	140	4260	50 158				
240	162	140	4260	48 034				

Molson, Peck & Johnson
 Surveyors & Engineers
 Richmond, B.C. 278-9674

STRATA TITLES ACT

NEW LOT NO	D.I.D FROM	D.I.D	FORM 1		FORM 2		FORM 3
			SCHEDULE OF UNIT ENTITLEMENT	INTEREST UPON DESTRUCTION	SCHEDULE OF INTEREST UPON DESTRUCTION	SCHEDULE OF VOTING RIGHTS	
241	46	140	4260	47802	47802		
242	47	140	4260	48034	48034		
243	48	140	4260	48128	48128		
244	49	140	4260	48128	48128		
245	50	140	4260	48128	48128		
246	51	140	4260	48128	48128		
247	25	140	4260	47802	47802		
248	25	140	4260	47802	47802		
249	25	140	4260	47802	47802		
250	25	140	4260	47802	47802		
251	25	140	4260	47802	47802		
252	25	140	4260	47802	47802		
253	25	140	4260	47802	47802		
254	25	140	4260	47802	47802		
255	25	140	4260	47802	47802		
256	25	140	4260	47802	47802		
257	25	140	4260	47802	47802		
258	25	140	4260	47802	47802		
259	25	140	4260	47802	47802		
260	25	140	4260	47802	47802		
261	25	140	4260	47802	47802		
262	25	140	4260	47802	47802		
263	25	140	4260	47802	47802		
264	25	140	4260	47802	47802		
265	25	140	4260	47802	47802		
266	25	140	4260	47802	47802		
267	25	140	4260	47802	47802		
268	25	140	4260	47802	47802		
269	25	140	4260	47802	47802		
270	25	140	4260	47802	47802		
271	25	140	4260	47802	47802		
272	25	140	4260	47802	47802		
273	25	140	4260	47802	47802		
274	25	140	4260	47802	47802		
275	25	140	4260	47802	47802		
276	25	140	4260	47802	47802		
277	25	140	4260	47802	47802		
278	25	140	4260	47802	47802		
279	25	140	4260	47802	47802		
280	25	140	4260	47802	47802		
281	25	140	4260	47802	47802		
282	25	140	4260	47802	47802		
283	25	140	4260	47802	47802		
284	25	140	4260	47802	47802		
285	25	140	4260	47802	47802		
286	25	140	4260	47802	47802		
287	25	140	4260	47802	47802		
288	25	140	4260	47802	47802		
289	25	140	4260	47802	47802		
290	25	140	4260	47802	47802		
291	25	140	4260	47802	47802		
292	25	140	4260	47802	47802		
293	25	140	4260	47802	47802		
294	25	140	4260	47802	47802		
295	25	140	4260	47802	47802		
296	25	140	4260	47802	47802		
297	25	140	4260	47802	47802		
298	25	140	4260	47802	47802		
299	25	140	4260	47802	47802		
300	25	140	4260	47802	47802		

Molson Peck & Topliss
Surveyors & Engineers
Richmond, B.C. 278-9674

STRATA TITLES ACT

NEW LOT NO	OLD LOT STRATA NO PLAN	FORM 1		FORM 2		FORM 3	
		SCHEDULE OF UNIT ENTITLEMENT	INTEREST UPON DESTRUCTION	SCHEDULE OF INTEREST UPON DESTRUCTION	SCHEDULE OF VOTING RIGHTS		
301	25	242	4760	56 826			
302	26	242	4760	53 336			
303	27	242	4260	51 987			
304	28	242	4260	51 848			
305	29	242	4260	52 080			
306	30	242	4260	52 080			
307	31	242	4260	57 080			
308	32	242	4760	54 580			
309	33	242	4760	54 580			
310	34	242	4260	53 336			
311	35	242	4260	51 057			
312	36	242	4260	52 034			
313	37	242	4260	53 336			
314	38	242	4760	56 826			
315	39	242	4260	53 336			
316	40	242	4760	56 416			
317	41	242	4260	51 754			
318	42	242	4260	52 498			
319	43	242	4260	53 754			
320	44	242	4260	53 336			
321	45	242	4260	56 964			
322	46	242	4260	51 987			
323	47	242	4760	54 785			
324	48	242	4260	52 080			
325	49	242	4260	52 080			
326	50	242	4260	52 080			
327	51	242	4260	51 080			
328	52	242	4260	51 987			
329	53	242	4260	51 987			
330	54	242	4260	51 754			
331	55	242	4260	51 754			
332	56	242	4760	56 416			
333	57	242	4760	51 754			
334	58	242	4260	52 498			
335	59	242	4260	53 150			
336	60	242	4260	53 336			
337	61	242	4760	50 964			
338	62	242	4260	51 987			
339	63	242	4760	54 785			
340	64	242	4260	52 080			
341	65	242	4260	52 080			
342	66	242	4260	52 080			
343	67	242	4260	51 987			
344	68	242	4260	51 987			
345	69	242	4260	51 754			
346	70	242	4260	51 754			
347	71	242	4260	51 754			
348	72	242	4760	54 416			
349	73	242	4260	51 154			
350	74	242	4260	52 498			
351	75	242	4260	53 150			
352	76	242	4260	53 336			
353	77	242	4260	50 964			
354	78	242	4260	51 987			
355	79	242	4760	54 785			
356	80	242	4260	52 080			
357	81	242	4760	52 080			
358	82	242	4260	52 080			
359	83	242	4260	52 080			
360	84	242	4260	51 987			

Second Sheet 20 of 22 sheets
 STRATA PLAN N.W. 518

STRATA TITLES ACT

NEW LOT NO	OLD LOT NO	FORM 1		FORM 2		FORM 3	
		FROM STRATA PLAN	SCHEDULE OF UNIT ENTITLEMENT	SCHEDULE OF INTEREST UPON DESTRUCTION	SCHEDULE OF VOTING RIGHTS	INTEREST UPON DESTRUCTION	NUMBER OF VOTES
361	85	242	4260	51 987			
362	86	242	4260	51 154			
363	87	242	4260	51 754			
364	88	242	4260	56 416			
365	89	242	4260	51 754			
366	90	242	4260	57 498			
367	91	242	4260	53 150			
368	92	242	4260	53 386			
369	93	242	4260	50 964			
370	94	242	4260	51 987			
371	95	242	4260	56 785			
372	96	242	4260	52 080			
373	97	242	4260	52 080			
374	98	242	4260	52 080			
375	99	242	4260	52 080			
376	100	242	4260	51 987			
377	101	242	4260	51 487			
378	102	242	4260	51 754			
379	103	242	4260	51 754			
380	104	242	4260	56 416			
381	105	242	4260	51 754			
382	106	242	4260	52 498			
383	107	242	4260	53 150			
384	108	242	4260	53 386			
385	109	242	4260	50 964			
386	110	242	4260	51 987			
387	111	242	4260	56 785			
388	112	242	4260	52 080			
389	113	242	4260	52 080			
390	114	242	4260	52 080			
391	115	242	4260	57 080			
392	116	242	4260	51 987			
393	117	242	4260	51 987			
394	118	242	4260	51 754			
395	119	242	4260	51 704			
396	120	242	4260	50 916			
397	121	242	4260	51 154			
398	122	242	4260	52 448			
399	123	242	4260	53 150			
400	124	242	4260	53 386			
401	125	242	4260	50 964			
402	126	242	4260	51 987			
403	127	242	4260	56 785			
404	128	242	4260	52 080			
405	129	242	4260	52 080			
406	130	242	4260	52 080			
407	131	242	4260	52 080			
408	132	242	4260	51 987			
409	133	242	4260	51 987			
410	134	242	4260	51 754			
411	135	242	4260	51 754			
AGGREGATE			1,802,260	20,640,222			

Accepted as to forms (42) This 13 day of April, 1976

[Signature]
 Superintendent of Insurance
 Date 5.3.76

Molson Peck & Tapscott
 Surveyors & Engineers
 Richmond B.C. 270-9674
 Job No. E-5810

