



# 55

## KILLARNEY HERITAGE LANDMARK TOWNHOMES & GARDEN FLATS WITH MODERN INTERIORS



avalon dairy

### INHERIT

A LEGACY

LEARN MORE



avalon dairy

### INHERIT

A LEGACY

## AVALON MEWS IS BORN OUT OF AN INSPIRING STORY OF AMBITION, ENDURANCE, AND FAMILY.

Enticed by news of the gold rush, young Jeremiah Crowley journeyed west from his home in Newfoundland to make his fortune. Little did he know, it was too late. Instead of finding gold, he purchased six cows and founded Avalon Dairy on Wales Street in 1906.

With the help of Jeremiah's son, Everett Crowley, Avalon survived the depression, prospered during war, and avoided corporate takeover. When this last dairy farmland in Vancouver was sold and Avalon moved to Burnaby, the Killarney community gained a collection of family homes on this culturally significant area of East Vancouver. Only twenty years younger than the City of Vancouver and the oldest continuously operating, family-run dairy in British Columbia, Avalon Dairy is a true local legacy.



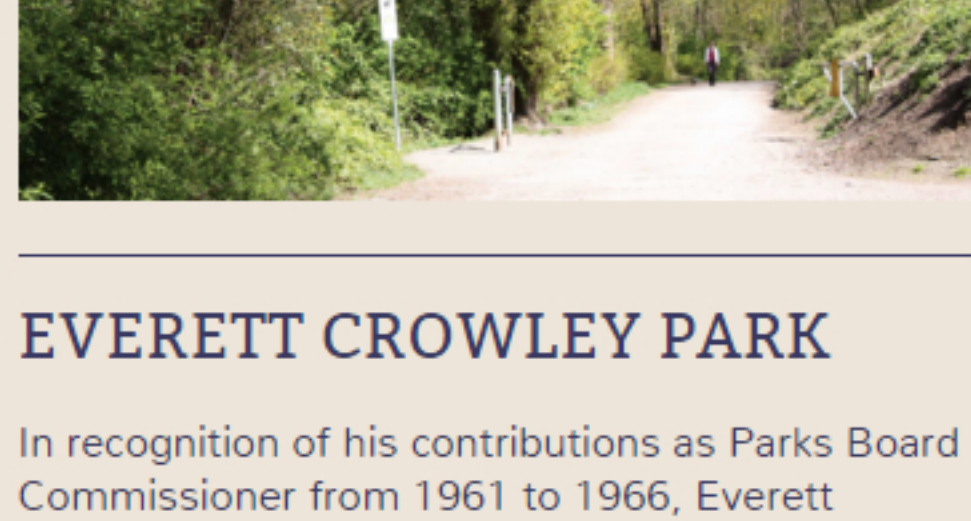
#### AVALON HOUSE

The original Crowley farmhouse will be restored for future generations of families to create their own stories.



#### ART HISTORY

Commissioned by the City of Vancouver, 'til the cows come home' is an original work of art by Douglas Senft. Six steel plate cows stand, walk, and graze throughout the Avalon greenway, as Crowley's original cows once did.



#### EVERETT CROWLEY PARK

In recognition of his contributions as Parks Board Commissioner from 1961 to 1966, Everett Crowley Park is named after Avalon Dairy's successor. The tranquil, 100-acre park in southeast Vancouver pays homage to the local legend who shaped the Killarney neighbourhood as both a business owner and resident.



## heritage values

# INSPIRED

MODERN LIVING

SEE WHAT'S HAPPENING

heritage values

# INSPIRED

MODERN LIVING

## OWN A PIECE OF VANCOUVER'S HERITAGE IN THE QUAINT COMMUNITY OF KILLARNEY AND GAIN A BEAUTIFUL HOME ROOTED IN FAMILY VALUES.

The 55 craftsman-style townhomes and garden flats located where Avalon Dairy once stood honour a significant slice of history. Comprised of six buildings, the modern homes surround the original Crowland residence, revitalized to continue through time. Experience a unique blend of quiet residential, abundant parkland, diverse shops and amenities, convenient transit and bike trails, and, of course, a legendary piece of land. Create a home in a community that promotes healthy living and variety of life.

#### DISCOVER THE IMPORTANCE OF PLACE

Come alive with family, culture, and nature. Rising above the Fraser River, the south-east corner of Vancouver is a true community. Amongst the tree-lined streets, Avalon Mews is surrounded by the treasures of Killarney and Fraserview neighbourhoods, while bordering the benefits of Burnaby.

Explore the ethnicities of Victoria Drive, retreat into a lush park, feel the heritage of what was once dairy farmland. The closeness of Kingsway and Knight Street provide connection throughout Vancouver and beyond, while numerous bus stops and a nearby Skytrain station add even more transportation options. This is a corner that seems central.

VIEW THE MAP



#### 10 CUISINES

There is something for all tastes and fancies when it comes to food. Dine on Vietnamese, Italian, Japanese, Indian, or a number of other fine delicacies in the surrounding area.



#### 9 SCHOOLS

This family-friendly neighbourhood has education top-of-mind. Elementary and secondary schools dot the community, and further education lies within easy reach via transit.



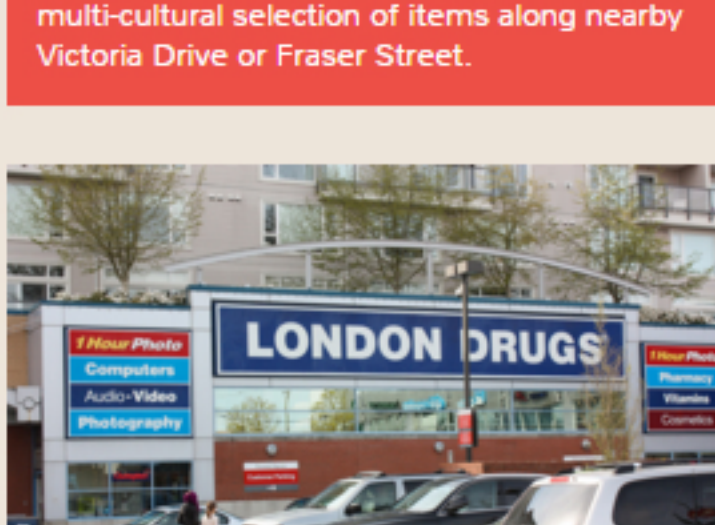
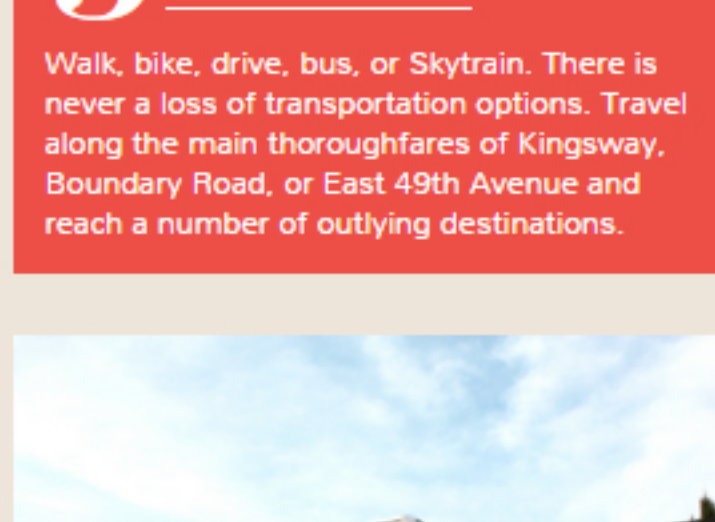
#### 5 PARKS

Stumble upon five parks within a five block radius from Avalon Mews - travel a bit further and trail number almost doubles. Walk or bike the trails, play a game of soccer or baseball, or simply relax on a patch of grass.



#### 400 STORES & ACTIVITIES

With Metrotown only a ten minute drive away, the selection of accessible stores and services is extensive. Alternatively, find a multi-cultural selection of items along nearby Victoria Drive or Fraser Street.



heritage

# INSPIRED

ARCHITECTURE

## HOMES OFFER A FRESH PERSPECTIVE ON CONTEMPORARY LIVING - STYLISH, COMFORTABLE, AND FUNCTIONAL.

Life at Avalon Mews revolves around community. With the legacy of family woven into the land, relationships are easily fostered between neighbours. And the common outdoor space is intended as a gathering spot between residents. Interiors are flawlessly designed with an emphasis on quality. And natural light contributes to the feeling of openness - every space is bright.

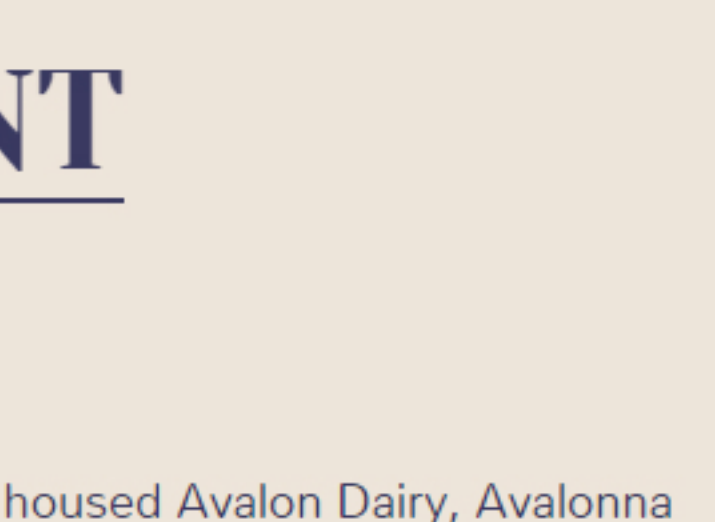
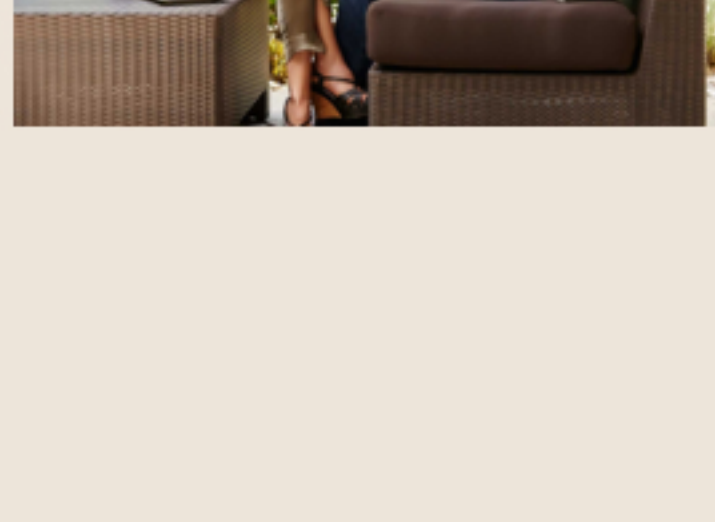
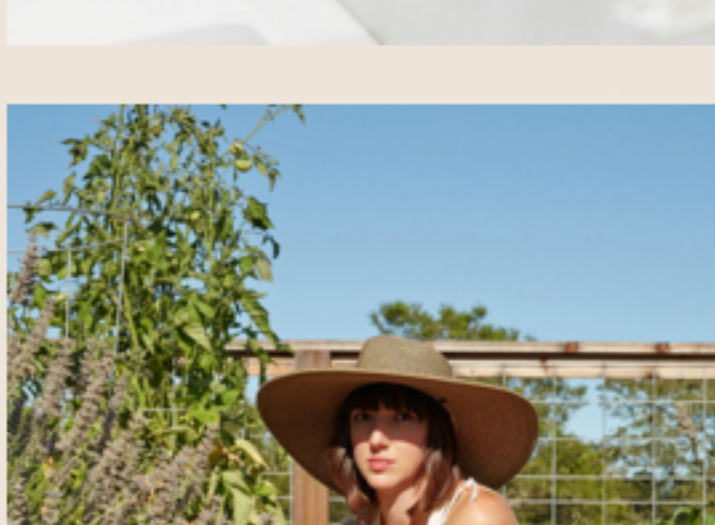
#### CONNECT WITH PEOPLE

The village-like atmosphere is heightened with the availability of shared garden plots, an area for barbecuing, and expansive green spaces. Grow fresh vegetables for dinner, coordinate a weekend feast with neighbours, and let your kids run free on the soft grass. This is more than a home, it's a community.

Choose how you want to live by selecting from two beautiful colour schemes. Kitchens are alive with designer appliances, solid countertops, and sleek fixtures. While bathrooms provide you with the tools to truly relax in luxury. Live in a home where every moment is special.

VIEW FLOOR PLANS

VIEW SITE PLAN



avalon mews

# DEVELOPMENT

WITH VISION

Recognizing the cultural and historical significance of the area that once housed Avalon Dairy, Avalon Homes chose to honour the legacy of the pioneering family by designing a community-focused project. It was our goal to build homes that will endure for future generations to carry on the heritage of the neighbourhood. We have assembled a team of carefully selected real estate professionals to ensure the best measures are taken to create a true community.

DEVELOPER  
AVALONNA HOMES LTD.

Avalonna Homes has a history of excellence, with four decades of experience in project development, construction, management, and finance. Their sterling reputation for building homes of exceptional quality is a result of uncompromising standards, innovative design, and a passion for detail. Motivated to make each project unique, Avalonna Homes' philosophy for building one-of-a-kind homes is clearly evident at Avalon Mews - the residences stand apart in every way. Trusted after-sales service and a comprehensive industry-leading 2-5-10 year warranty ensure complete peace of mind.

ARCHITECT  
ROBERT CICOZZI ARCHITECTS

MARKETING  
FOCUS PROJECT MARKETING

SALES  
SUTTON WESTCOAST REALTY



PRESENTATION CENTRE  
105 - 2607 EAST 49TH AVENUE  
IN KILLARNEY MARKET

CONTACT US  
604 438 5050  
INFO@AVALONMEWS.CA

ADVANCED SUITE SALE ON NOW  
BEFORE PUBLIC LAUNCH

REGISTER NOW



B C CONDO.S . NET