

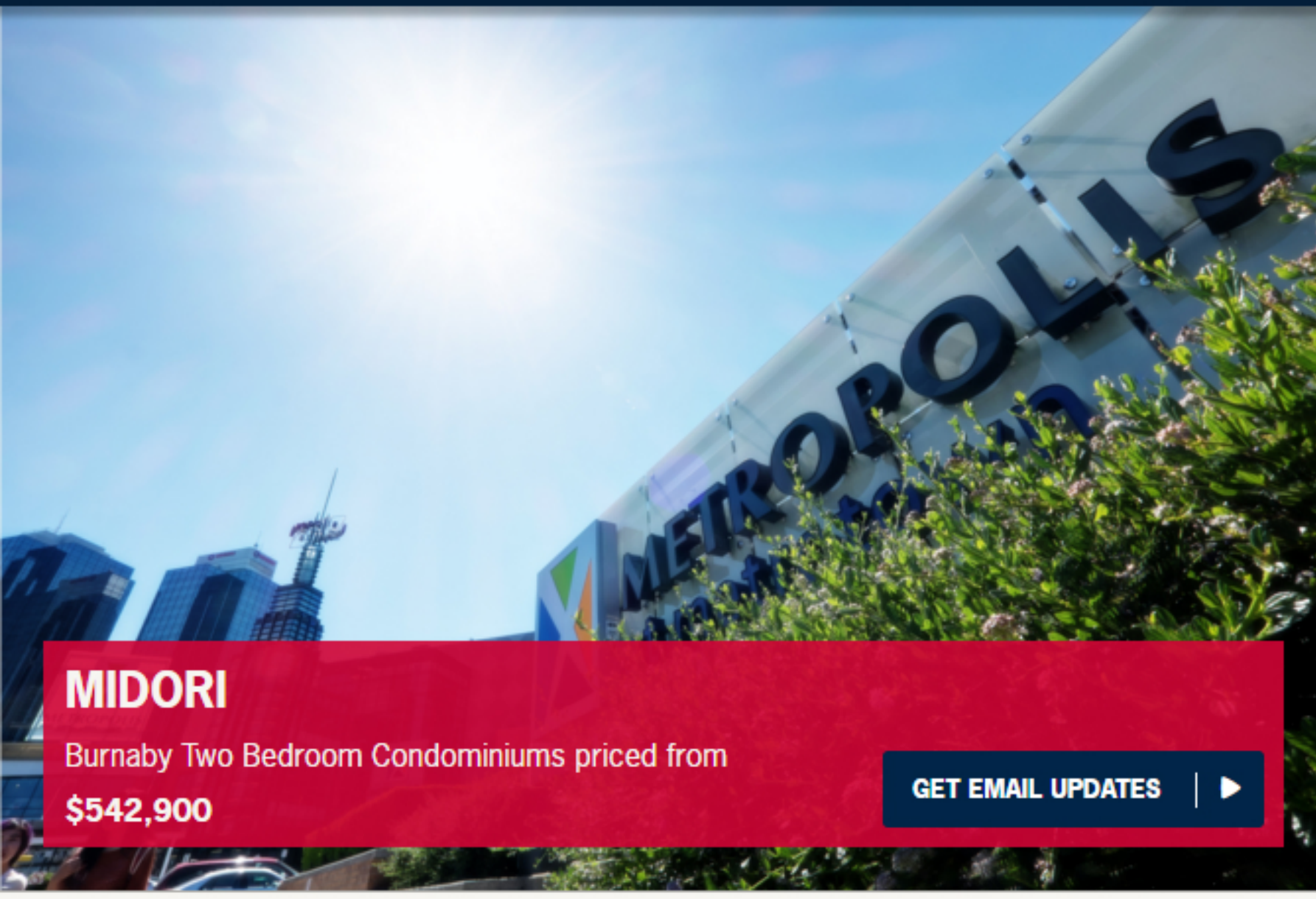
LIST ALL (A-Z)

MAP VIEW

CITY VIEW

MIDORI

OVERVIEW



MIDORI

Burnaby Two Bedroom Condominiums priced from \$542,900

GET EMAIL UPDATES

PHOTO GALLERY

FLOOR PLANS



6579 Marlborough Ave., Burnaby

VIEW PRINTABLE VERSION

EMAIL

Like 508

G+ 8

Tweet

[Photo Gallery](#) | [Floor Plans](#) | [Map](#) | [Neighbourhood](#) | [News](#)

Overview



Introducing Midori by Polygon – an iconic tower that offers a collection of stylish residences in the sought-after Metrotown neighbourhood.

With tree-lined streets, lush outdoor spaces and an over-height lobby, Midori ensures an impressive arrival. Designed by the acclaimed team at DYS Architecture, the attention to detail has resulted in a breakthrough tower that makes a memorable architectural statement. Unprecedented in the Metrotown neighbourhood, Midori features organic curves and details in a refreshing leaf-green colour, symbolizing growth, harmony, health and prosperity.

Inside, the two-bedroom homes offer generous spaces that flow out to large balconies. With equal commitment to exceptionally designed floorplans, the residences boast a long list of thoughtful details and designer finishings that will elevate the pride of ownership.

Just steps away, the largest shopping and entertainment complex in British Columbia, Metropolis at Metrotown, beacons with allure. With over 400 popular stores, services and restaurants to choose from, life at Midori will always be in-sync with style. Other amenities such as the Bonsor Park and Recreational Complex are also just a stone's throw away, offering life-balancing activities such as swimming, aqua-fit, racquet sports and more. And for the urban commuter, downtown Vancouver is just 15 minutes away on the convenient SkyTrain network.

NOW SELLING!



Waylin Cheng

Sales Manager

604.439.8852

midori@polyhomes.com

Presentation Centre:

Open noon - 5pm daily

(except Friday)

Polygon Midori Residences Ltd.

REGISTER TO GET EMAIL UPDATES

By subscribing you will be among the first to receive the latest news, exclusive offers and community updates.

First name: *

Last name: *

Email: *

Phone: *

Postal code: *

I'm a Realtor

I would like to receive more information, which may be via electronic communication, about communities and events that may be of interest to me from the Polygon family of affiliated companies.

REGISTER

Polygon Midori Residences Ltd.



Photo Gallery

[VIEW PRINTABLE VERSION](#) | [★](#)

[EMAIL](#) | [👍](#)

[f](#) Like 3

[G+](#) 1

[T](#) Tweet

[P](#) Pin it

[Photo Gallery](#) | [Floor Plans](#) | [Map](#) | [Neighbourhood](#) | [News](#)

NOW SELLING!



Waylin Cheng

Sales Manager

604.439.8852

midori@polyhomes.com

Presentation Centre:

Open noon - 5pm daily
(except Friday)

Polygon Midori Residences Ltd.

REGISTER TO GET EMAIL UPDATES

By subscribing you will be among the first to receive the latest news, exclusive offers and community updates.

First name: *

Last name: *

Email: *

Phone: *

Postal code: *

I'm a Realtor

I would like to receive more information, which may be via electronic communication, about communities and events that may be of interest to me from the Polygon family of affiliated companies.

[REGISTER](#) | [▶](#)

Polygon Midori Residences Ltd.



[f](#) [G+](#) 0



[f](#) [G+](#) 0



[f](#) [G+](#) 1



[f](#) [G+](#) 0



[f](#) [G+](#) 0



[f](#) [G+](#) 0



[f](#) [G+](#) 0



[f](#) [G+](#) 0





Floor Plans

[VIEW PRINTABLE VERSION](#)



[EMAIL](#)



[Like](#) 2

[G+](#) 1

[Tweet](#)

[Photo Gallery](#) | [Floor Plans](#) | [Map](#) | [Neighbourhood](#) | [News](#)

FEATURES

FINEST FINISH APPEARANCE
 Midori is a high-end residential development with a modern, sophisticated design. The building features a mix of high-quality materials and finishes, including natural stone, wood, and metal. The interior spaces are bright and airy, with large windows and balconies. The building is surrounded by lush landscaping and a secure parking area.

CONCISE KITCHEN
 The kitchen is a central hub in the home, featuring a large island with a breakfast bar. The kitchen is equipped with high-end appliances, including a refrigerator, oven, and dishwasher. The kitchen is finished with a mix of materials, including wood, stone, and metal.

CONTEMPORARY HOME
 Midori is a modern residential development with a mix of high-quality materials and finishes. The building features a mix of high-quality materials and finishes, including natural stone, wood, and metal. The interior spaces are bright and airy, with large windows and balconies. The building is surrounded by lush landscaping and a secure parking area.

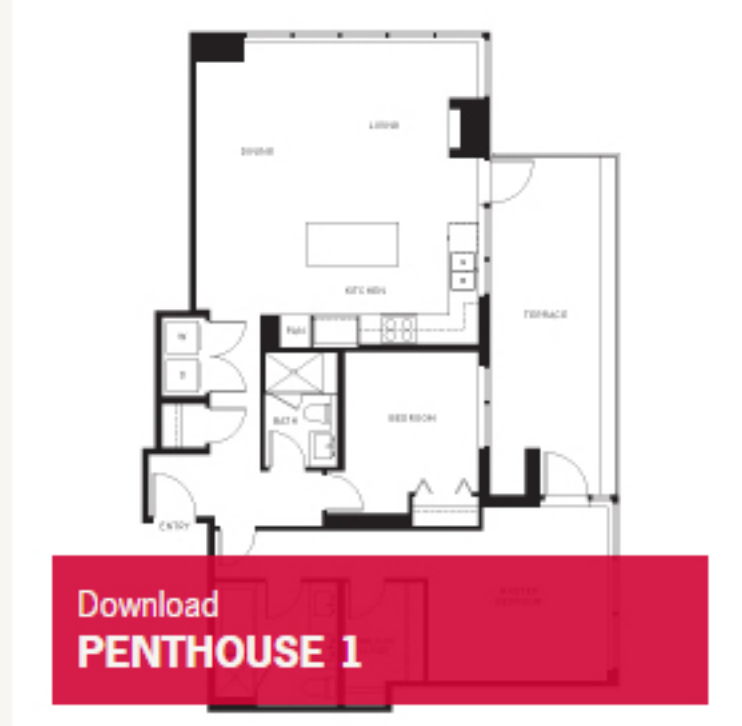
SECURE SUB-BARRIERS
 Midori is a high-end residential development with a modern, sophisticated design. The building features a mix of high-quality materials and finishes, including natural stone, wood, and metal. The interior spaces are bright and airy, with large windows and balconies. The building is surrounded by lush landscaping and a secure parking area.

[Download FEATURES](#)

[download](#)

[Email](#)

[f](#) [G+](#) [0](#)



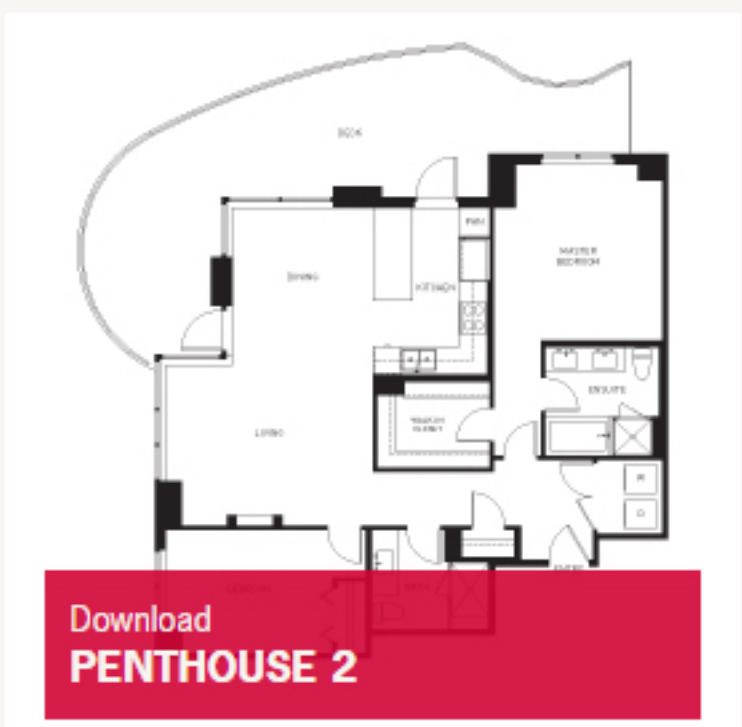
[Download PENTHOUSE 1](#)

2 Bedroom & 1 Bathroom
Approx. 1,113 sq. ft.

[download](#)

[Email](#)

[f](#) [G+](#) [0](#)



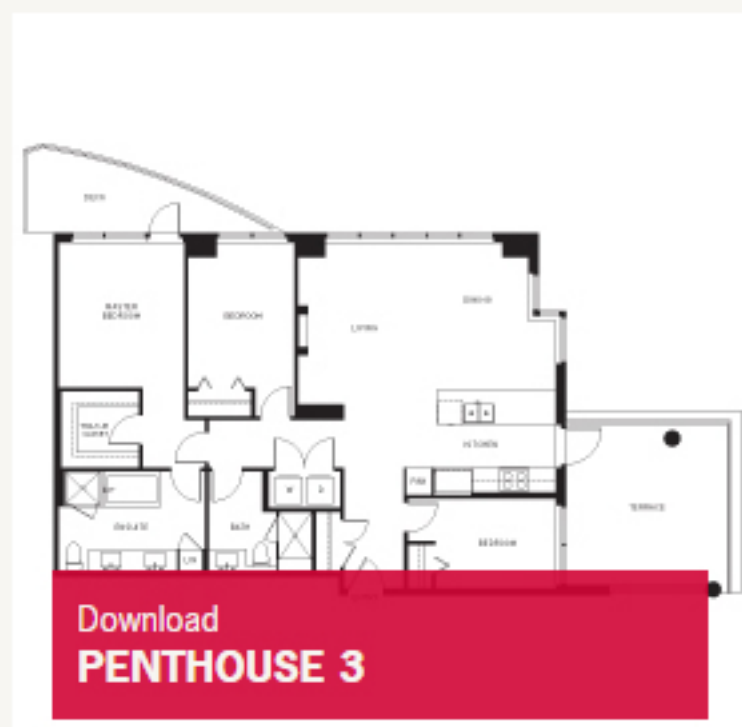
[Download PENTHOUSE 2](#)

2 Bedroom & 1 Bathroom
Approx. 1,190 sq. ft.

[download](#)

[Email](#)

[f](#) [G+](#) [0](#)



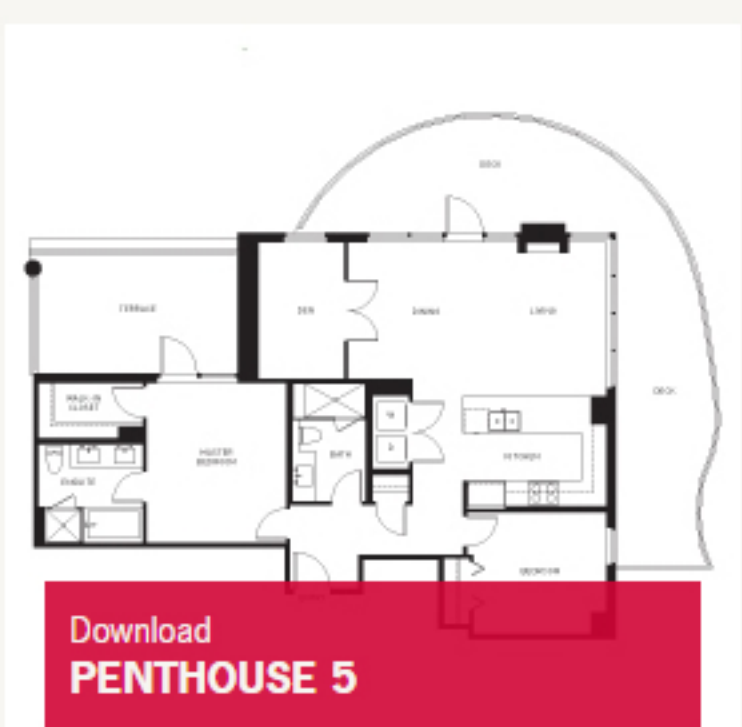
[Download PENTHOUSE 3](#)

3 Bedroom & 2 Bathroom
Approx. 1,274 sq. ft.

[download](#)

[Email](#)

[f](#) [G+](#) [0](#)



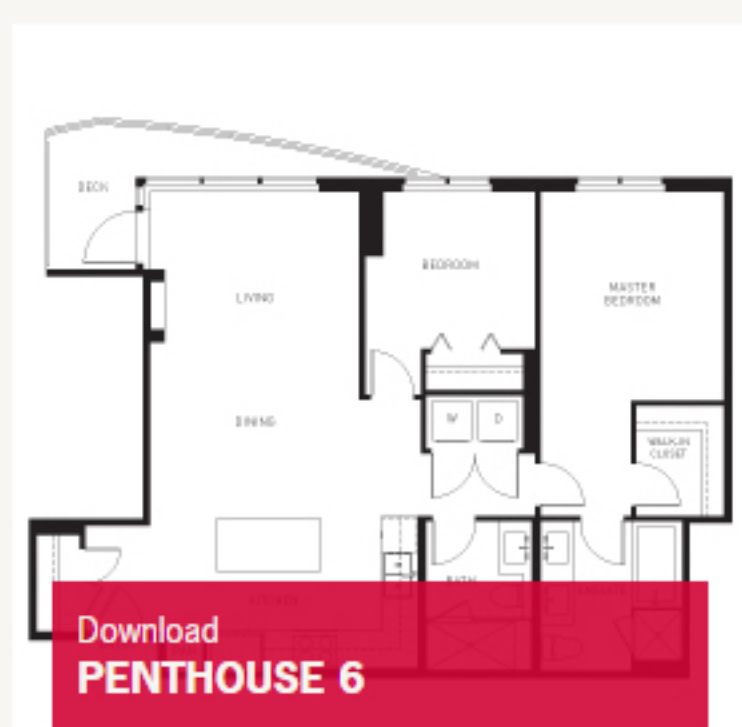
[Download PENTHOUSE 5](#)

2 Bedroom + Den & 2 Bathroom
Approx. 1,174 sq. ft.

[download](#)

[Email](#)

[f](#) [G+](#) [0](#)



[Download PENTHOUSE 6](#)

2 Bedroom & 2 Bathroom
Approx. 1,005 sq. ft.

[download](#)

[Email](#)

[f](#) [G+](#) [0](#)



[Download PLAN A](#)

2 Bedroom & 2 Bathroom
Approx. 907 sq. ft.

[download](#)

[Email](#)

[f](#) [G+](#) [0](#)



[Download PLAN B](#)

2 Bedroom & 2 Bathroom
Approx. 811 sq. ft.

[download](#)

[Email](#)

[f](#) [G+](#) [0](#)



[Download PLAN C](#)

2 Bedroom & 2 Bathroom
Approx. 950 sq. ft.

[download](#)

[Email](#)

[f](#) [G+](#) [0](#)



[Download PLAN D](#)

2 Bedroom & 2 Bathroom
Approx. 877 sq. ft.

[download](#)

[Email](#)

[f](#) [G+](#) [0](#)



[Download PLAN E](#)

2 Bedroom & 2 Bathroom
Approx. 934 sq. ft.

[download](#)

[Email](#)

[f](#) [G+](#) [0](#)



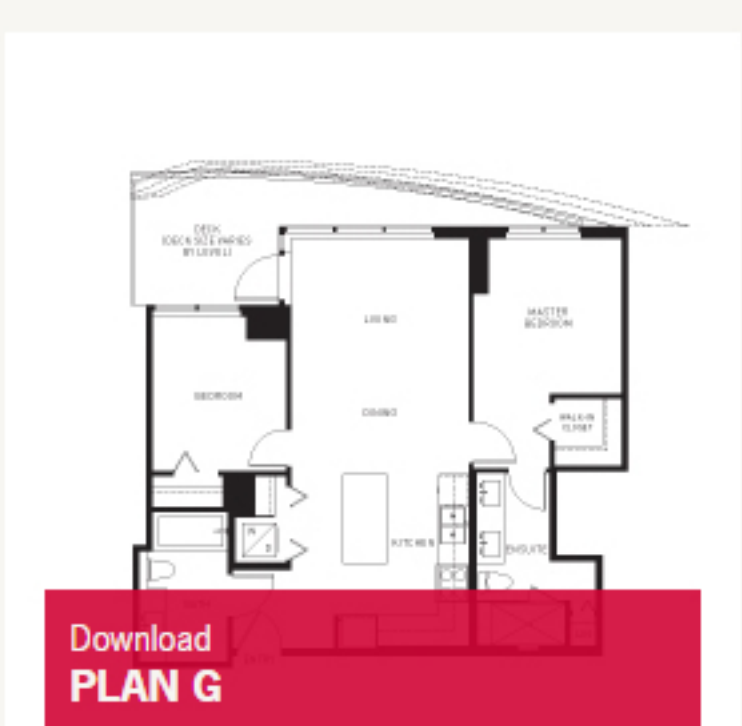
[Download PLAN F](#)

2 Bedroom & 2 Bathroom
Approx. 922 sq. ft.

[download](#)

[Email](#)

[f](#) [G+](#) [0](#)



[Download PLAN G](#)

2 Bedroom & 2 Bathroom
Approx. 866 sq. ft.

[download](#)

[Email](#)

[f](#) [G+](#) [0](#)

NOW SELLING!



Waylin Cheng
Sales Manager
604.439.8852
midori@polyhomes.com

Presentation Centre:
Open noon - 5pm daily
(except Friday)

Polygon Midori Residences Ltd.

REGISTER TO GET EMAIL UPDATES

By subscribing you will be among the first to receive the latest news, exclusive offers and community updates.

First name: *

Last name: *

Email: *

Phone: *

Postal code: *

I'm a Realtor

I would like to receive more information, which may be via electronic communication, about communities and events that may be of interest to me from the Polygon family of affiliated companies.

[REGISTER](#)

Polygon Midori Residences Ltd.





6579 Marlborough Ave., Burnaby

[VIEW PRINTABLE VERSION](#) | ★

[EMAIL](#) |

Like 1

+1 1

Tweet

[Photo Gallery](#) | [Floor Plans](#) | [Map](#) | [Neighbourhood](#) | [News](#)

NOW SELLING!



Waylin Cheng

Sales Manager

604.439.8852

midori@polyhomes.com

Presentation Centre:

Open noon - 5pm daily
(except Friday)

Polygon Midori Residences Ltd.

REGISTER TO GET EMAIL UPDATES

By subscribing you will be among the first to receive the latest news, exclusive offers and community updates.

First name: *

Last name: *

Email: *

Phone: *

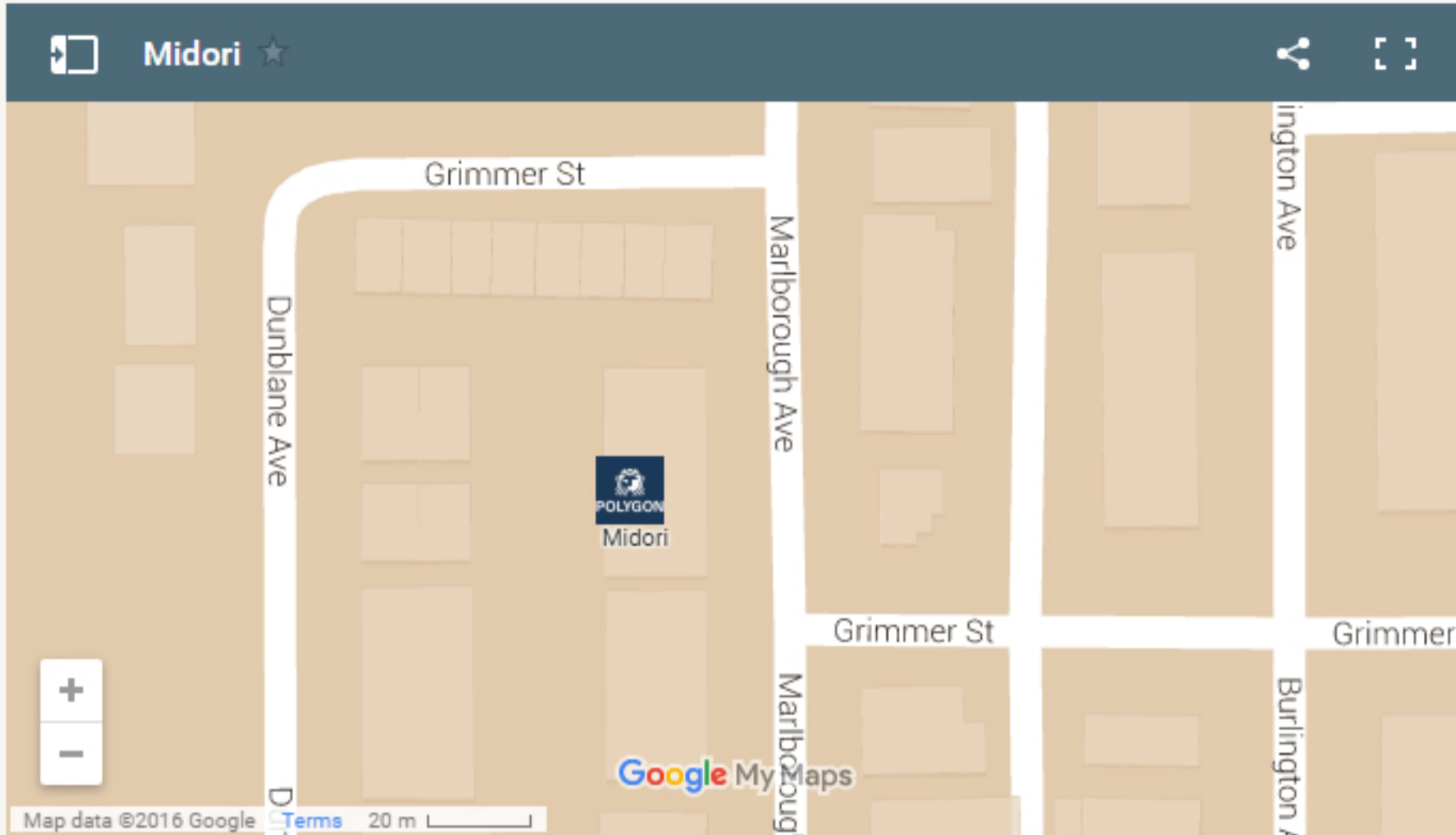
Postal code: *

I'm a Realtor

I would like to receive more information, which may be via electronic communication, about communities and events that may be of interest to me from the Polygon family of affiliated companies.

[REGISTER](#) | ▶

Polygon Midori Residences Ltd.



[Google Maps](#) [GO](#) | ▶

[Neighbourhood](#) [GO](#) | ▶



Neighbourhood

[VIEW PRINTABLE VERSION](#) | ★

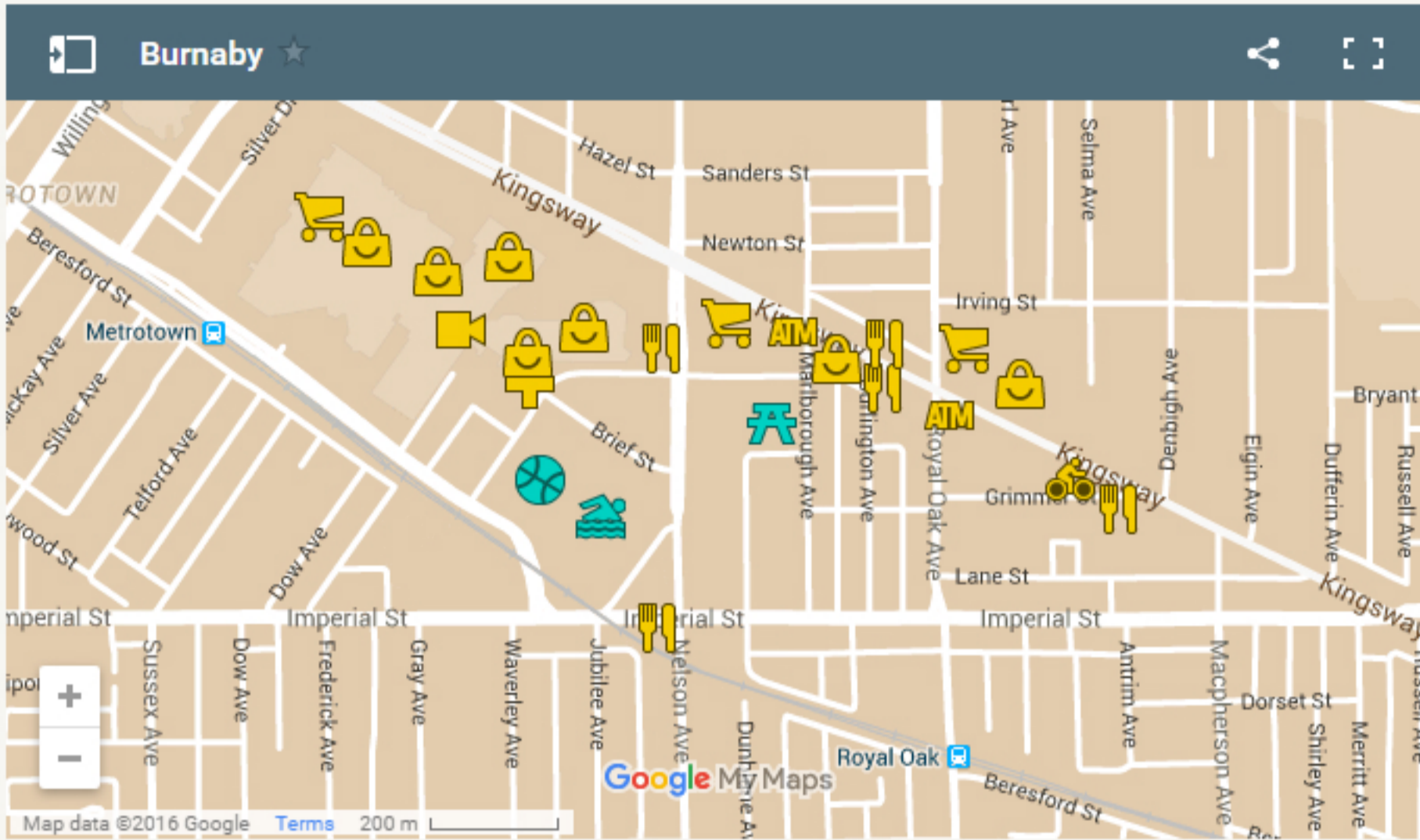
[EMAIL](#) |

Like 0

G+ 0

Tweet

[Photo Gallery](#) | [Floor Plans](#) | [Map](#) | [Neighbourhood](#) | [News](#)



[LARGE MAP](#) | ▶

A short drive from downtown Vancouver, Burnaby is known for its beautiful residential areas, parks, shopping and its bustling, fast-growing business, entertainment and retail centres at [Metropolis](#) at [Metrotown](#). Dozens of major companies have moved their headquarters to Burnaby, creating a booming regional economy.

As a leading centre of quality education and post-secondary and technology research, Burnaby is home to both [Simon Fraser University](#) and the [British Columbia Institute of Technology](#). Families love Burnaby for its green and peaceful residential neighbourhoods. Recreation opportunities abound, from hiking and mountain biking on rugged [Burnaby Mountain](#) to exploring hundreds of acres of parkland around [Deer Lake](#) and Burnaby Lake. Burnaby's Central Park is one of BC's largest urban parks, a favourite spot for sports activities and picnics.

NOW SELLING!



Waylin Cheng

Sales Manager

604.439.8852

midori@polyhomes.com

Presentation Centre:

Open noon - 5pm daily

(except Friday)

Polygon Midori Residences Ltd.

REGISTER TO GET EMAIL UPDATES

By subscribing you will be among the first to receive the latest news, exclusive offers and community updates.

First name: *

Last name: *

Email: *

Phone: *

Postal code: *

I'm a Realtor

I would like to receive more information, which may be via electronic communication, about communities and events that may be of interest to me from the Polygon family of affiliated companies.

[REGISTER](#) | ▶

Polygon Midori Residences Ltd.