

Showroom holiday hours by appointment only.



Only 7 Units Left!

21 Exclusive Townhomes

2850 McCallum Rd, Abbotsford
info@urbanhillside.com

Please call for Showings over the Holiday 604-744-1301

A unique offering of 21 Exclusive Townhomes by Monaco Estates.

3 Spacious Plans to Choose:

- 3 Bedroom, Den + Flex (Plan A) From 1857 Sq. Ft.
- 3 Bedroom, Den (Plan B1,B2) From 1468 Sq. Ft.
- 3 Bedroom, Den + Suite (Plan C1,C2) From 1856 Sq. Ft.



B C C O N D O S . N E T

Canada

FIFTH AVE



URBAN HILLSIDE

[Home](#)

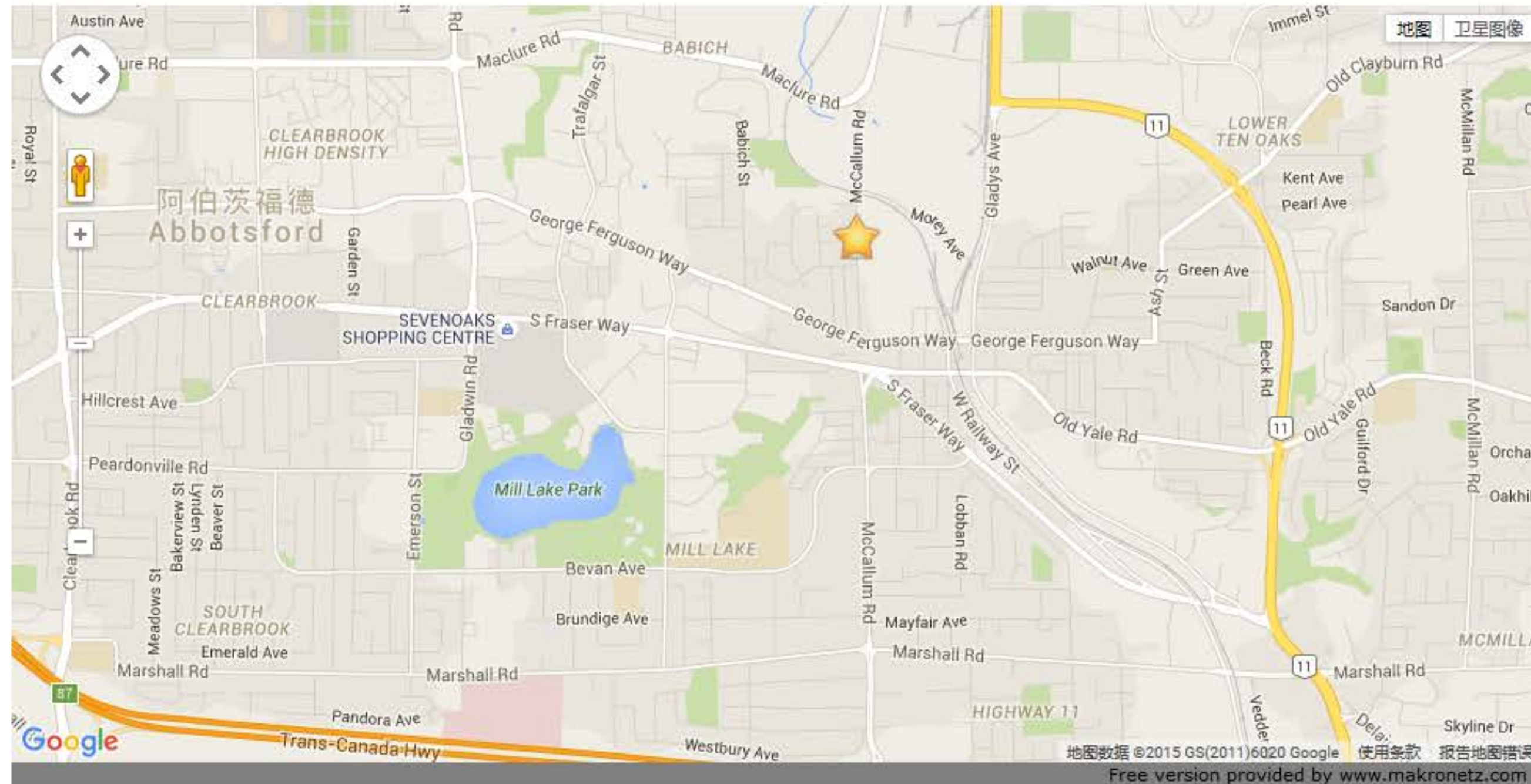
[Floor Plans](#)

[Gallery](#)

[Location](#)

[Contact Us](#)

2850 McCallum Rd, Abbotsford



TRAVELERS

Sotheby's
INTERNATIONAL REALTY



B C C O N D O S . N E T



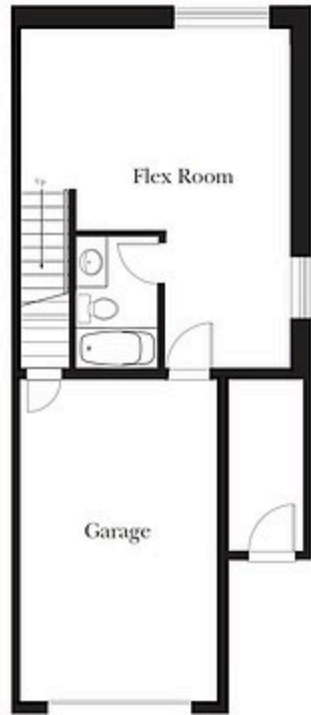


B C C O N D O S . N E T



Plan A

LOWER FLOOR	450 SF.
MAIN FLOOR	726 SF.
UPPER FLOOR	692 SF.
TOTAL	1,868 SF.



LOWER



MAIN



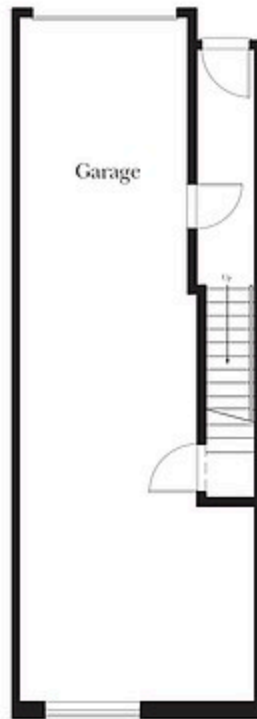
UPPER

The Developer reserves the right to make modifications and changes to the building design, elevations, dimensions, specifications, features and prices without prior notification. Details, pricing, taxes and conditions may vary. See website for conditions, inclusions and exclusions and approvals for material or construction substitutions. Retain your own plans and disregard the illustrations. Please see brochure for the actual selling units. 1/12/12



Plan B

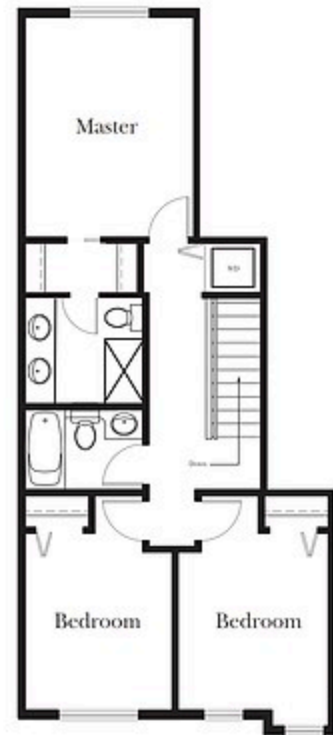
LOWER FLOOR	114 SF.
MAIN FLOOR	675 - 690 SF.
UPPER FLOOR	679 - 701 SF.
TOTAL	1,468 - 1,505 SF.



LOWER



MAIN



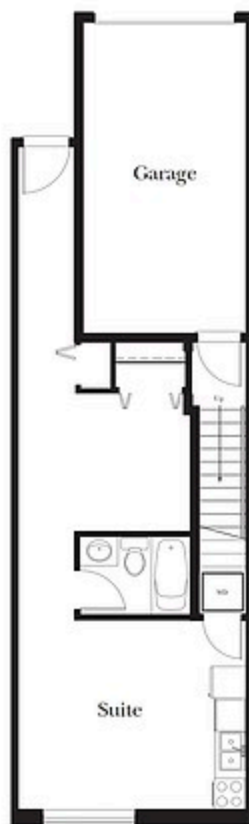
UPPER

The Developer reserves the right to make modifications and changes to the building design, elevations, dimensions, specifications, features and prices without prior notification. Check, please, water and electrical flow and direction. All dimensions include wall thicknesses and approximate 6" radius of architectural moldings. Revised plans may vary from plans you may request the illustrations. Please see brochure for the actual selling units. 1/12/12



Plan C

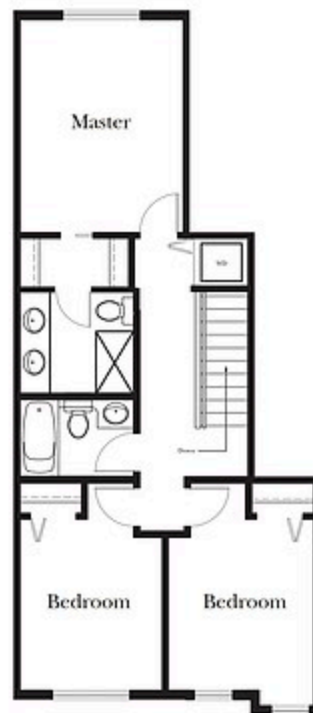
LOWER FLOOR	502 - 508 SF.
MAIN FLOOR	675 - 690 SF.
UPPER FLOOR	679 - 701 SF.
TOTAL	1,856 - 1,899 SF.



LOWER



MAIN



UPPER

The developer reserves the right to make modifications and changes to the building design, materials, dimensions, specifications, features and prices without prior notification. Details, pricing, taxes and conditions may vary. ©2008. All dimensions, in inches and percentages are approximate and subject to construction measurements. Retain your own plans and disregard the dimensions. Please see brochure for the actual selling plans. 1/12/08





ARCHITECTURE



Monaco Estates
signature of quality and value





ABOUT

Monaco Estates, has been building quality homes across the lower mainland for over a decade. A commitment to strong values and integrity are at the core of this family run business. We have a proven track record to deliver quality construction, on time, and on budget. We are developing a team of exceptional people and relationships to provide exceptional customer satisfaction

STAFF



Paul Jahn

Founder & CEO

Graduate of Kwantlen Polytechnic University in Accounting, Paul has a diverse business background in the development and Realestate Arena.

Joe Arvay

Site Supervisor

Joe Arvay has been in the development and building industry for over a decade from small to large multifamily projects

Sharolynn Jahn

Controller

Graduate of Trinity Western University in Chemistry, Sharolynn brings a diverse background of experience.

