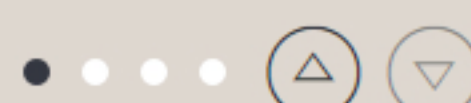




REGISTER NOW

COMING SOON TO BRENTWOOD.



A STORY OF EVOLUTION

As the community of Brentwood evolves, so too does the neighbourhood's architecture. Madison & Dawson embodies this transition from residential to urban, balancing clean lines and contemporary glass storefronts at street level with playful design and an inviting palette in the homes above

[VIEW THE HOMES](#) ▶



DISCOVER M&D

Since Hershey Porte founded Porte in 1968, we've come to understand that our job extends beyond simply developing and managing properties to building communities and enriching lives. They say home is where the heart is—so we make homes you can pour your heart into.

[LEARN MORE ABOUT PORTE](#) ▶

YOUR NEW HOME AWAITS

Get VIP access to this thoughtfully crafted collection of one, two and three bedroom condos.

REGISTER



BUILDING DESIGN

A PLACE THAT WELCOMES YOU HOME



AMENITIES

Your Madison & Dawson story doesn't begin and end at the front door of your home. It grows strong in the fitness centre and adventurous in the play area. It unwinds in the lounge and revels by the barbeque. It relaxes in the park and blossoms in your private garden plot.

INDOOR SPACES

Work up a sweat in the Madison & Dawson fitness centre or let off some steam with a few friends in the indoor lounge.



OUTDOOR PLACES

The private garden terrace features a barbeque and fire pit, a wet bar and plenty of space to lounge outdoors.

ROOM TO SPARE

Reserve the guest suite to welcome overnight visitors and share your Madison & Dawson home with out-of-town friends and family.

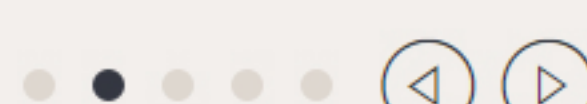
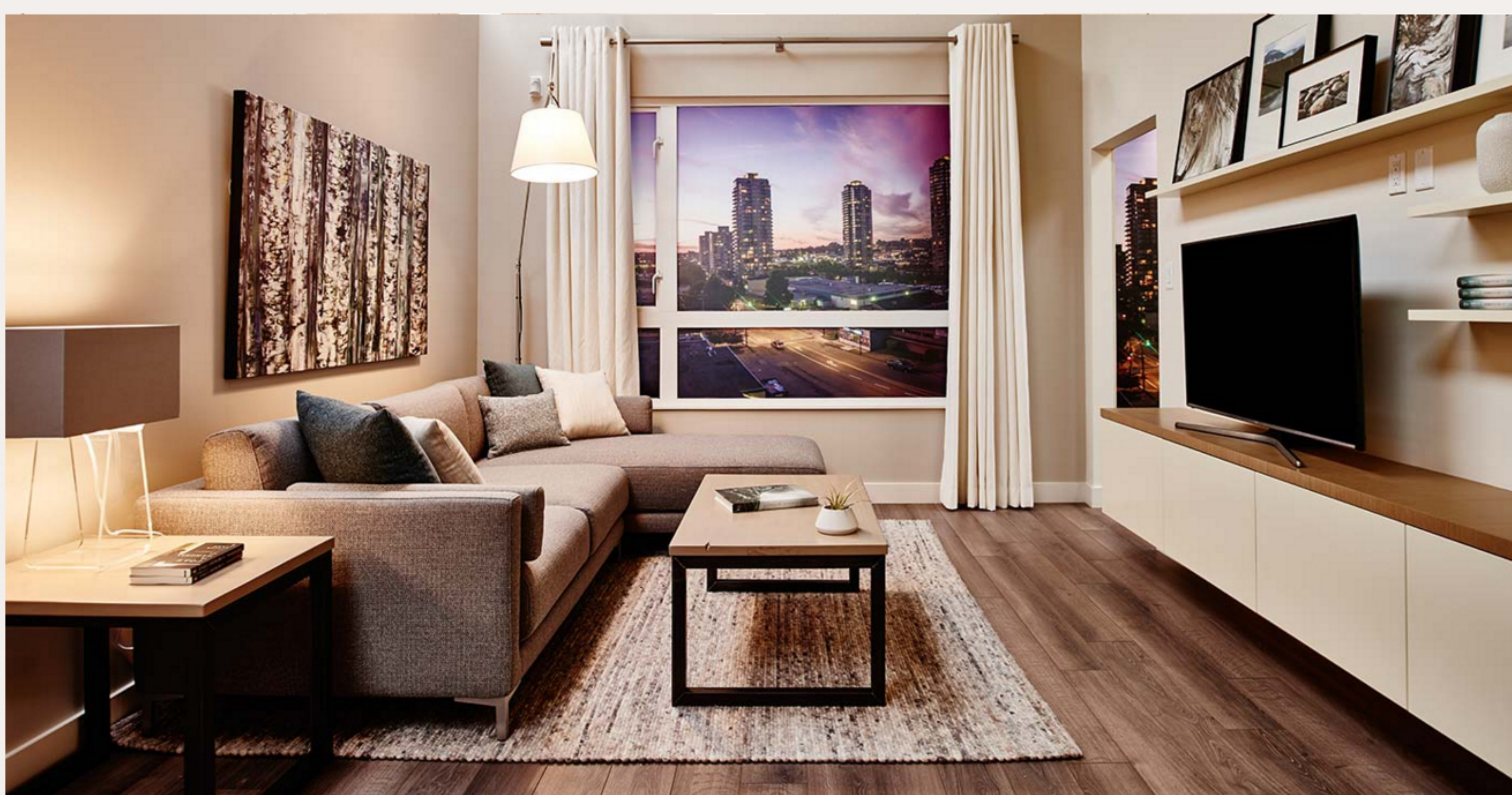


YOUR NEW HOME AWAITS

Get VIP access to this thoughtfully crafted collection of one, two and three bedroom condos.

REGISTER

INTERIORS
A LIFT OF COMFORT AND EASE

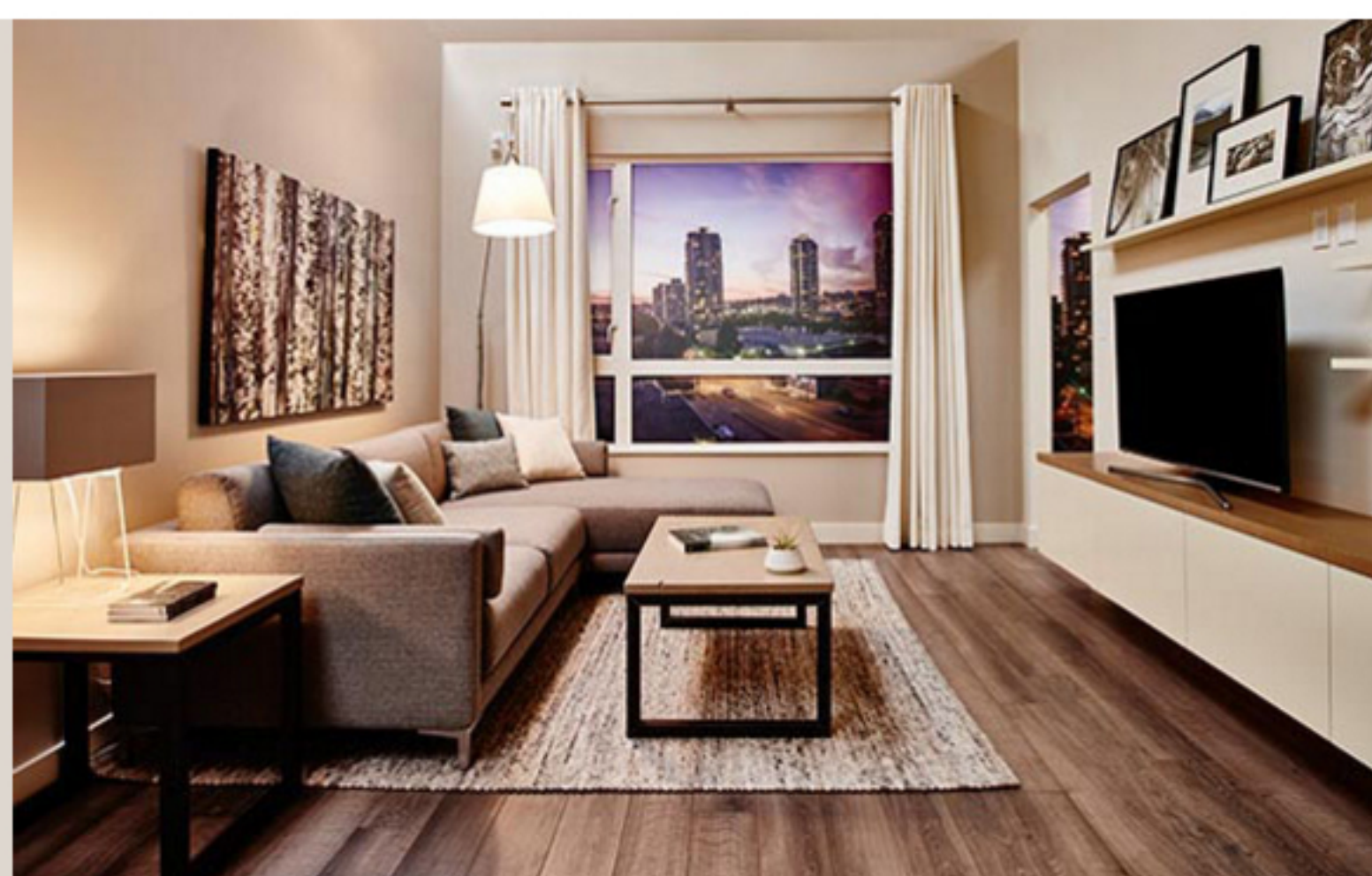


FEATURES AND FINISHES

Your Madison & Dawson home is a canvas for your story, with neutral colour schemes, spacious floor plans and flexible spaces that adapt to your needs. Each room includes special features and finishes designed to make your life easier.

LIGHT TOUCH

Designer light fixtures and horizontal venetian blinds let you choose your light and set the mood in every room.



FRESH STARTS

Expansive windows bathe your bedroom in natural light, while sleek bathroom vanities help keep life simple in the morning.

SOUL FOOD

Top-notch stainless steel appliances let you unleash your inner chef, transforming weekday dinners into gourmet feasts.



[FULL FEATURES LIST](#)

YOUR NEW HOME AWAITS

Get VIP access to this thoughtfully crafted collection of one, two and three bedroom condos.

[REGISTER](#)

WELCOME HOME

MAKE YOUR HOME IN A PLACE WITH ROOM TO STRETCH AND GROW.

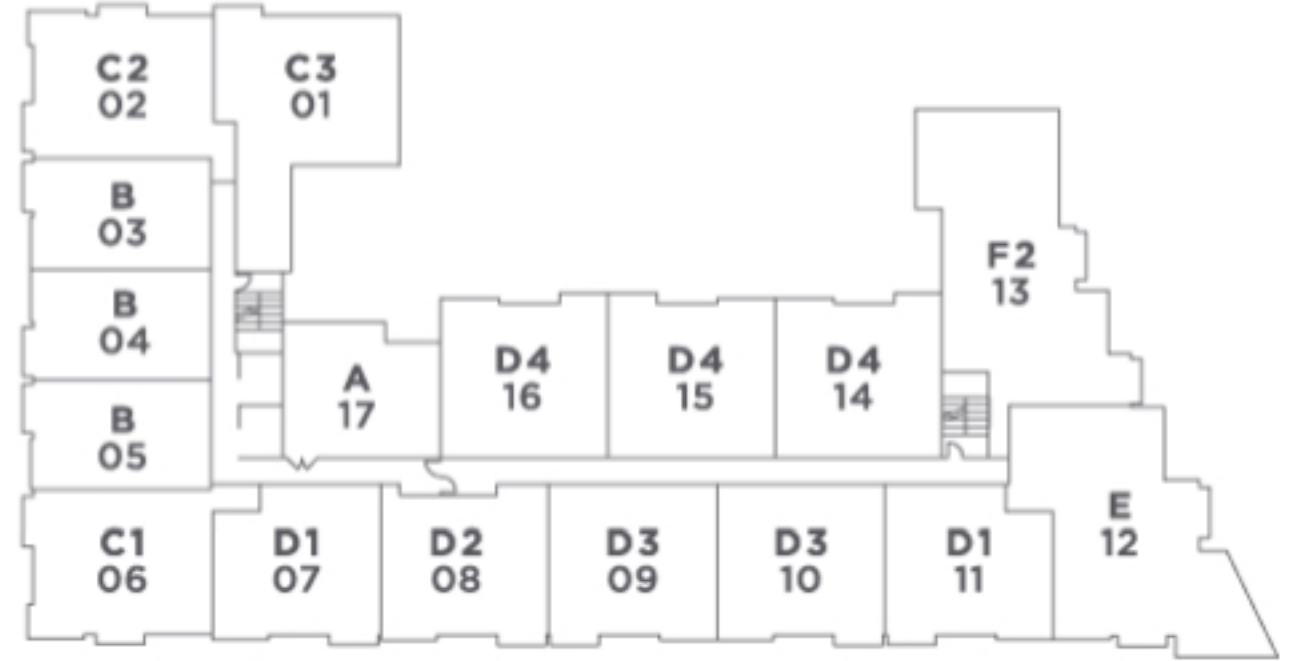
Your Madison & Dawson home is a canvas for your story, with neutral colour schemes, spacious floor plans and flexible spaces that adapt to your needs. Each room includes special features and finishes designed to make your life easier.



CHOOSE A FLOOR

- 6
- 5
- 4
- 3
- 2
- 1

CHOOSE A PLAN



360° VIEW

- ALL
- 1 BED
- 2 BED
- 3 BED

PLAN	BEDROOMS	SIZE	PRICE	PLAN
A	1 BEDROOM	636 SQFT	CALL TODAY!	VIEW
B	1 BED + DEN	702 SQFT	CALL TODAY!	VIEW
C1	2 BEDROOM	1005 SQFT	CALL TODAY!	VIEW
C2	2 BEDROOM	1022 SQFT	CALL TODAY!	VIEW
C3	2 BEDROOM	983 SQFT	CALL TODAY!	VIEW
C4	2 BEDROOM	893 SQFT	CALL TODAY!	VIEW
C5	2 BEDROOM	887 SQFT	CALL TODAY!	VIEW
D1	2 BED + DEN	872 SQFT	CALL TODAY!	VIEW
D2	2 BED + DEN	878 SQFT	CALL TODAY!	VIEW
D3	2 BED + DEN	911 SQFT	CALL TODAY!	VIEW
D4	2 BED + DEN	934 SQFT	CALL TODAY!	VIEW
E	3 BEDROOM	1292 SQFT	CALL TODAY!	VIEW
F1	3 BED + DEN	1409 SQFT	CALL TODAY!	VIEW
F2	3 BED + DEN	1425 SQFT	CALL TODAY!	VIEW

DOWNLOAD ALL PLANS

YOUR NEW HOME AWAITS

Get VIP access to this thoughtfully crafted collection of one, two and three bedroom condos.

REGISTER

GALLERY

PICTURE YOUR FAMILY HERE

EXTERIORS & AMENITIES



INTERIORS



YOUR NEW HOME AWAITS

Get VIP access to this thoughtfully crafted collection of one, two and three bedroom condos.

REGISTER

NEIGHBOURHOOD LIVE STEPS FROM IT ALL

ON THE RISE

A growing community, Brentwood is set to welcome 350 more restaurants, shops and services in the coming years.



ROOM TO ROAM

Madison & Dawson puts you in the heart of a walkable neighbourhood filled with restaurants to discover, shops to wander and parks to explore.

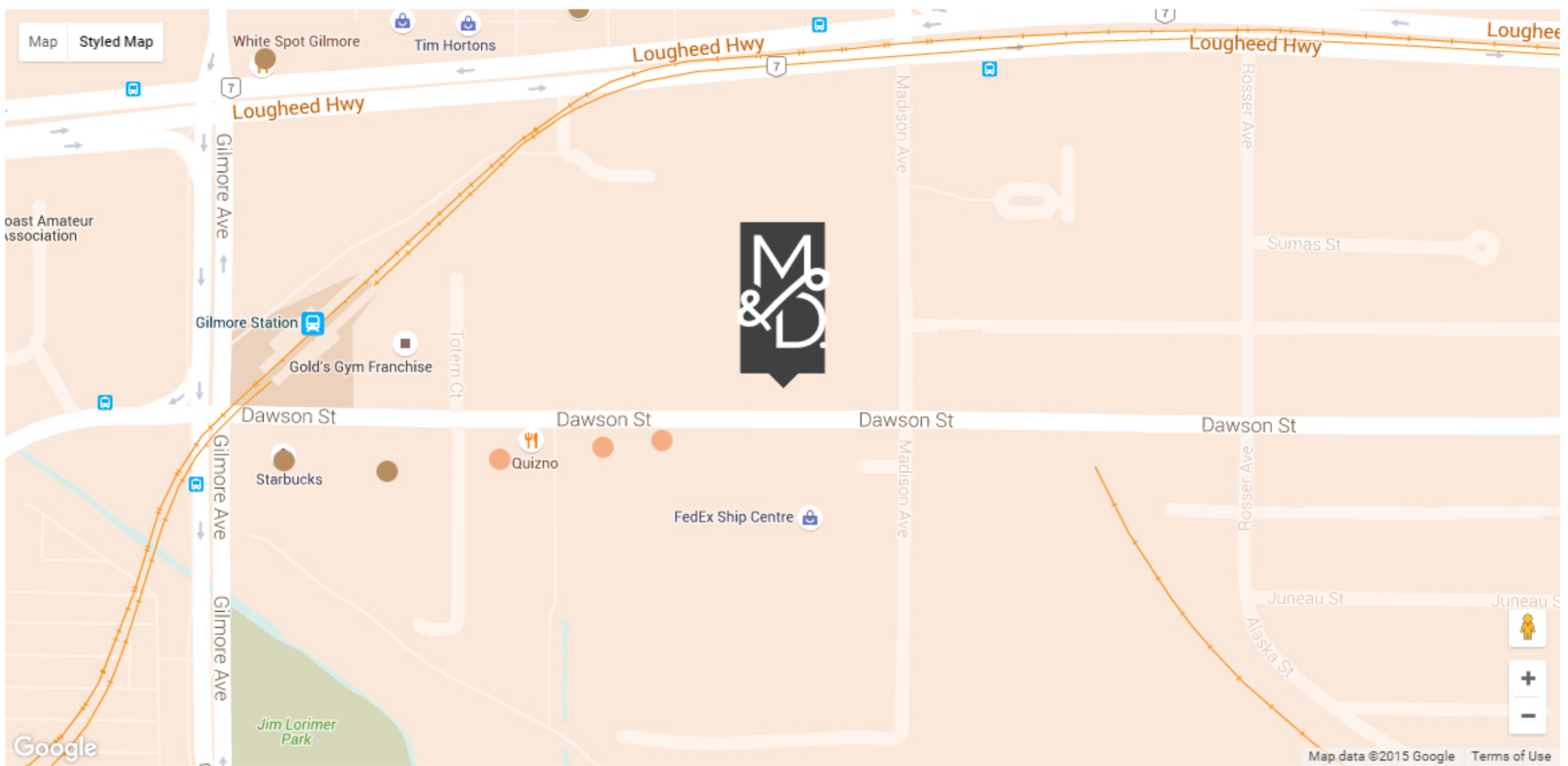
CLOSE TO THE CITY

With Vancouver just 10 kilometres away, you can jump in your car or hop on a bike or SkyTrain and be downtown in no time.



PLAY & EXPLORE

At Madison & Dawson, you can live in a real community, where you can connect when you want and run free when you need.



- ENTERTAINMENT / LEISURE
- FOOD & DINING
- ESSENTIALS
- SHOPPING

YOUR NEW HOME AWAITS

Get VIP access to this thoughtfully crafted collection of one, two and three bedroom condos.

REGISTER

PORTE HOMES
THE PORTE STORY



Since 1968, Porte has been serious about real estate—all kinds. We develop, build and manage it, using the Porte Promises as our guide. For us, it is a labour of love that carries a great amount of responsibility.

With this in mind, an integral part of our business is our philanthropic work; long after foundations are poured, we continue to give back to the communities we create.

It is a great privilege to craft communities from the ground up, and it is with this knowledge that we make sure no detail is overlooked. As part of our Porte Promises, “if we haven’t delivered to our exacting standards, we go back and ‘get it right.’”

VISIT PORTE.CA



OTHER COMMUNITIES NOW SELLING

- [VERVE IN SURREY CITY CENTRE](#)
- [FRAMEWORK IN VANCOUVER'S CHINATOWN](#)

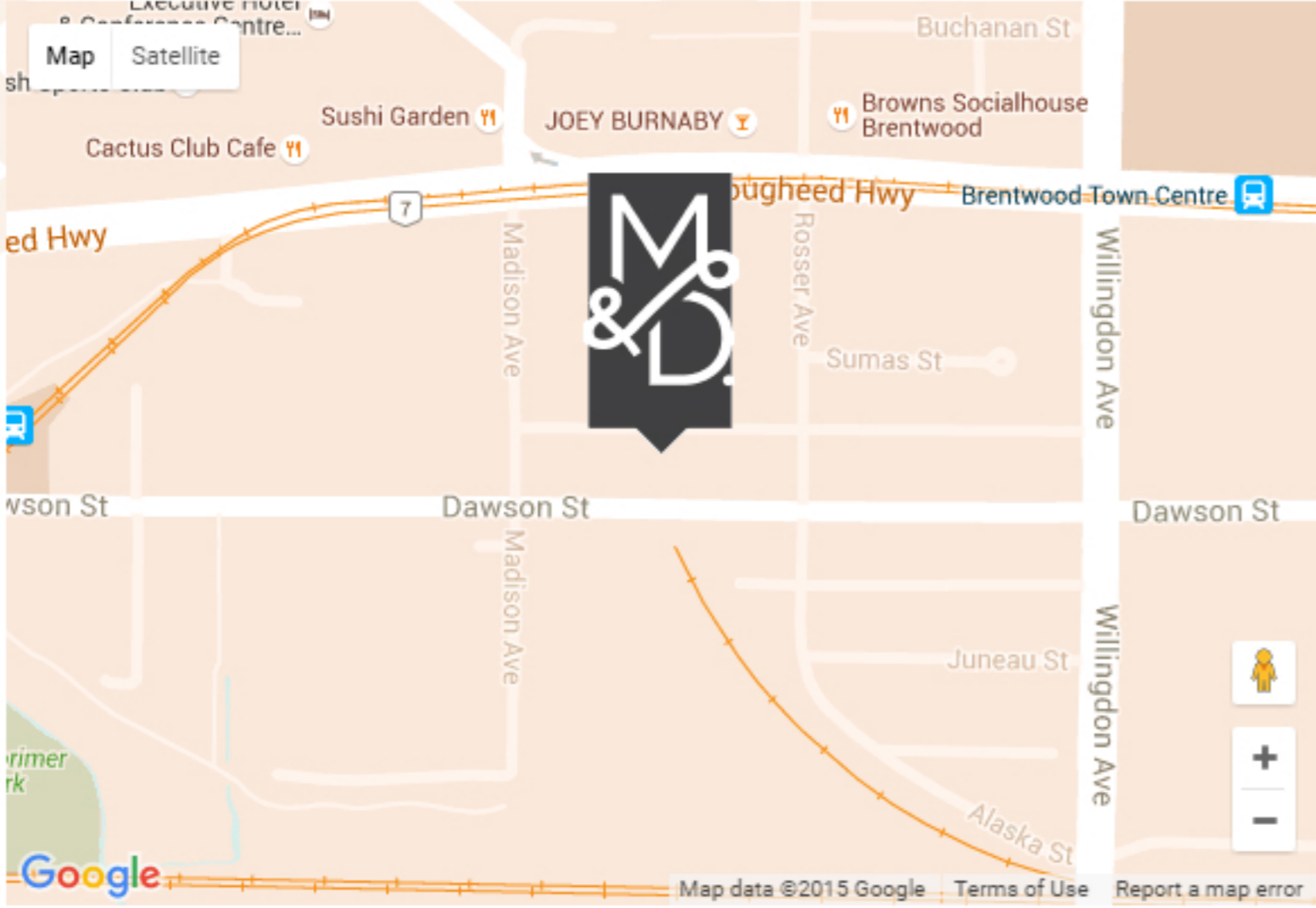
YOUR NEW HOME
AWAITS

Get VIP access to this thoughtfully crafted collection of one, two and three bedroom condos.

REGISTER

CONTACT

GET IN TOUCH TODAY



PRESENTATION CENTRE

4349 DAWSON STREET
BURNABY, BC

OPEN BY APPOINTMENT ONLY

604.428.0210
BRENTWOODHOMES@PORTE.CA
CALL FOR DETAILS OR REGISTER NOW

VIEW IN GOOGLE MAPS

YOUR NEW HOME
AWAITS

Get VIP access to this thoughtfully crafted collection of one, two and three bedroom condos.

REGISTER