



REGISTER



THE NEW ERA HAS ARRIVED

MOVE IN NOW

Adding to Yates Street's cool new vibe, Concert's much-anticipated new concrete condominium tower in the heart of downtown Victoria is now complete. In a city that offers the utmost in livability, no other new condominium matches the quality, convenience or central location of Era. Sophisticated and stylish interiors. Meticulously finished to the highest standards. Walkable to everything downtown Victoria has to offer. With efficiently designed floor plans that optimize the use of space. The new Era is your chance to live the enviable downtown Victoria lifestyle.

Tour our two fully furnished display suites to experience the new Era for yourself. With two bedroom homes starting from the mid \$300,000s and today's low interest rates, there's never been a better time to buy.

This new downtown Victoria condo is pure quality inside and out.



SALES OFFICE & DISPLAY SUITES

Open noon to 5pm daily (except Fridays)
728 Yates Street, Victoria

250 383 3722

Era@ConcertProperties.com





click to see 360° VIEW

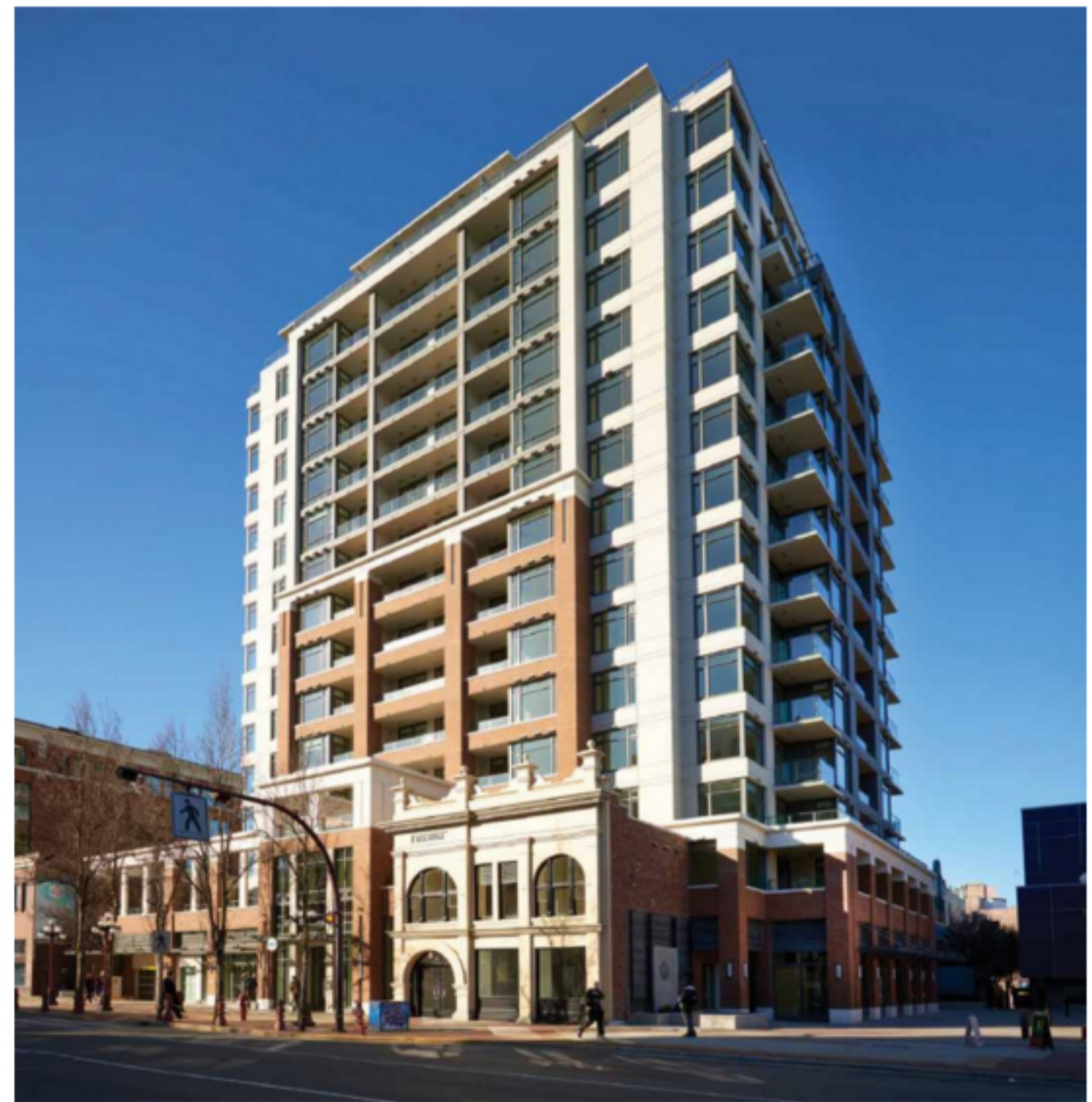
Era homes showcase harbour and city views, with top floors featuring panoramic views. Click above for the 360 view.

BUILDING ON HISTORY

Much like Victoria itself, Era harmoniously blends new with old by integrating an existing heritage brick façade with a modern concrete and glass tower. Rising 16 storeys in the very heart of beautiful Victoria, BC, these new condos are designed and built with sustainability in mind, from the energy-efficient appliances to the green roof.

Exclusive to residents are the amenities within Era. The large social lounge and expansive garden terrace are perfect for entertaining and connecting with neighbours. There's even a small communal garden to grow vegetables.

The adjacent, revitalized Millie's Lane is already establishing itself as a popular gathering enclave at your doorstep, making Era the cornerstone of a neighbourhood that is staking its claim to cool.





Available Floor Plans*

1 BEDROOM + DEN



2 BEDROOM

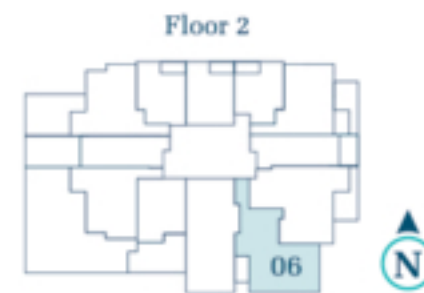


*Availability is subject to change without notice.

Plan Loft 1

1 BEDROOM + DEN
1008 sf

Print



Era stands apart from other Victoria condos in so many ways. Homes are efficiently designed, with open great room spaces and spacious balconies designed to complement an active life in the city. Interiors are highly livable and suited to entertaining.



REGISTER



The expansive social lounge is an oasis in the city, with views of the surrounding Victoria architecture.



INTERIOR SCENE

Era's stylish suites stand apart from other new condos in Victoria. Interiors are modern yet sophisticated, a perfect match to the vibrant city that lies outside your front door. Upper floors showcase panoramic harbour and city views. While floor plans are efficiently designed to optimize the use of space. Finishes are high quality, blending the warmth of wood tones with cool quartz countertops and glass tile backsplashes.

[For more info, download Features & Finishes sheet](#)





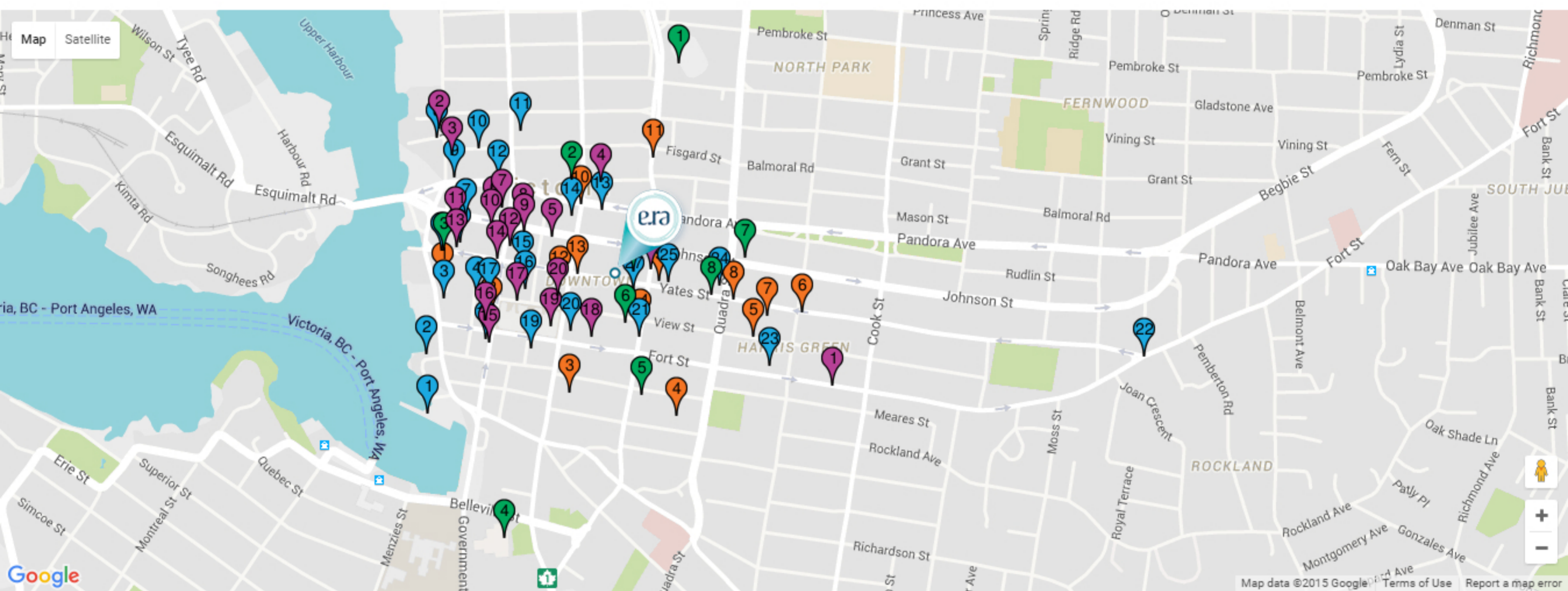
Strolling on Victoria's picturesque scenery.



TIME WELL SPENT

In the heart of downtown Victoria, Yates Street boasts a cool new vibe. The city's best cafés, restaurants, shops and services are clustered all around, and Era sits at the very centre. With a perfect walkscore of 100, Era affords its residents the very best in downtown Victoria condominium homes, in an enviable location that just can't be beat. Want to branch out a bit? Hop on your bike and experience why Era boasts a bikescore of 88 – flat as a pancake with access to excellent bike lanes. Wherever your day takes you, Era is central to it all.

[Click to see neighbourhood video](#)



DAILY FIX

1. Paradiso Di Stelle
2. Murchie's Tea & Coffee
3. Strath Ale, Wine & Spirit Merchants
4. YMCA
5. Harris Green Liquor Merchants
6. Dolce Vita Coffee Art
7. London Drugs
8. Market on Yates
9. Habit
10. Oak and Barrel Liquor Shoppe
11. Serious Coffee
12. Shoppers Drug Mart
13. Studio 4 Athletics
14. Mirage Coffee

EATS

1. Milestones Grill and Bar
2. Red Fish Blue Fish
3. Darcy's Pub
4. ReBar Modern Food
5. Fiamo
6. Ferris' Oyster Bar & Grill
7. Il Terrazzo
8. Canoe Brewpub, Marina & Restaurant
9. Swans Brewpub
10. Don Mee Seafood Restaurant
11. Brasserie L'école
12. Mo:Lé
13. John's Place
14. The Mint
15. Azuma Sushi
16. The Tapa Bar
17. Irish Times Pub
18. Bard & Banker
19. Pagliacci's
20. Cactus Club café
21. Italian Food Imports
22. Blue Fox Café
23. Cafe Brio
24. Floyd's Diner
25. Zambri's
26. Shine Café
27. Yates Street Taphouse

ENTERTAINMENT

1. Save-On-Foods Memorial Centre
2. McPherson Playhouse
3. Lucky Bar
4. National Geographic IMAX Theatre
5. Royal Theatre
6. Hermann's Jazz Club
7. Alix Goolden Performance Hall
8. Sugar Nightclub
9. Cineplex Odeon

SHOP/STYLE

1. Not Just Pretty, Modern Organic Clothing
2. Chintz & Company
3. Insideout Homestore
4. The Hive
5. Four Horsemen Shop
6. Lululemon
7. Mountain Equipment Co-op
8. North of Wednesday Boutique
9. Paradise Boutique
10. Reunion Boutique Clothing
11. Lab Salon
12. Spank
13. Outlooks
14. Sitka Surf and Skate Shop
15. Brun Body & Hair Bar
16. Munro's Books
17. She She Bags
18. Russell Books
19. The Bay Centre
20. Chapters
21. Cook Culture



REGISTER

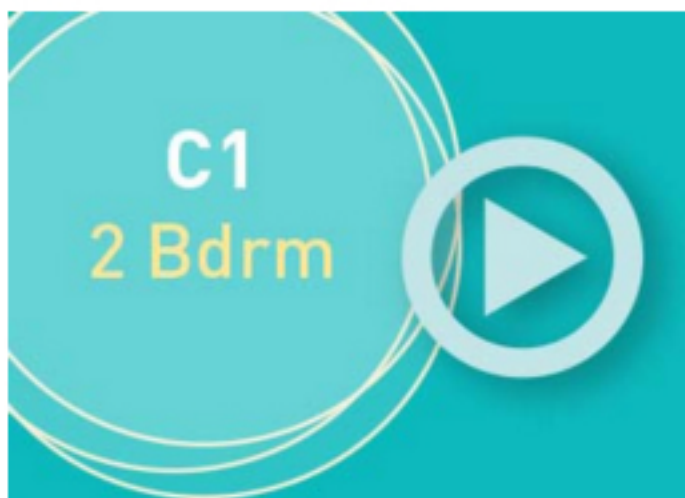


HAVE A LOOK AT WHAT LIFE IS LIKE AT ERA

Picture yourself living in the bright open space, with an expansive outdoor deck, stunning views, and an abundance of things to do at your doorstep. Era is a place you'll be proud to call home. The best part – these modern Victoria condos for sale in the heart of downtown are move in ready.

[Click to see all photos](#)

Videos





REGISTER

CONTACT

Welcome to the new Era, Victoria condos that rise above the rest. Whether you are looking to build your own equity, have the convenience of a second home in downtown, or add a great investment to your portfolio, visit us today to learn more.

Sales Office & Display Suites

Open noon to 5pm daily (except Fridays)
728 Yates Street, Victoria
[Google Map](#)
250 383 3722

Era@ConcertProperties.com

