

Welcome to Reflections on the River. Located in a historic waterside community on the Fraser River in Maple Ridge.



Welcome to your next step in life. Reflections on the River is a boutique waterside community on the Fraser River in Maple Ridge. With our unique one-of-a-kind location, Reflections on the River will set new standards for luxury condo buyers in the Fraser Valley.



VIEW FLOOR PLANS

With a variety of flexible one, two and three bedroom plans to choose from there's a home perfect for your lifestyle. Most homes feature large south facing windows, large living areas and spacious kitchens. Click above to view all 16 home plans available at Reflections on the River.



WHY FALCON HOMES?

For over twenty-five years, Falcon Homes has been designing and building exceptional residential and commercial projects across the Lower Mainland. Dedicated to providing unparalleled luxury and exceptional craftsmanship, we strive to create communities in vibrant neighborhoods.



WATERSIDE COMMUNITY

Reflections on the River is located in a historic waterside community on the Fraser River in Maple Ridge. Walking distance to shopping and restaurants, transit at your door and endless recreational opportunities nearby makes Reflections the ideal choice for your next step.

CONTACT US

Phone us at 604.467.0692

E-mail us at info@reflectionsliving.com

SITEMAP

[HOME](#) [FEATURES](#) [PLANS](#) [GALLERY](#) [AMENITIES](#) [FALCON HOMES](#) [CONTACT](#)



The homes at Reflections on the River are loaded with exceptional finishes and features. Over-sized windows with expansive Fraser Valley views and folding accordion doors leading to comfortable balconies are just a few of the features that make Reflections on the River unique.

THOUGHTFUL DESIGN

- West Coast exterior design with large cedar beam accents and brick details
- Protective rain screen technology for your peace of mind
- Acoustically engineered double-glazed Low-E windows
- Triple glazed windows in all bedrooms*
- Falcon Homes designed floorplans to maximize interior and exterior living space
- Oversized balconies and patios to enjoy the view and entertain

YOUR PEACE OF MIND

- Whirlpool full size front loading high efficiency washer and dryer
- Acoustic isolated concrete floors for limited noise transfer
- Wall assembly with additional sound proofing between suites
- Convenient and secure entry phone access with security camera feature
- Security cameras throughout building with close circuit viewing feature
- Rough-in for in-suite security system
- Sprinkler system throughout the building
- Secure anodized lockset and peephole on all suite doors
- Rough-in for optional air conditioning unit

EXCEPTIONAL INTERIORS

- 9' ceilings throughout 2nd and 3rd floor homes with vaulted ceilings on 4th floor
- Extra wide plank distressed look laminate flooring in entry, kitchen, dining and living rooms
- Premium carpet with upgraded underlay in all bedrooms and closets
- Horizontal 2" faux-wood blinds on all windows
- Designer selected lighting package
- Optional electric fireplace with wood mantle and designer tile surround

GOURMET KITCHENS

- Premium Whirlpool stainless steel appliance package featuring gas range and French door fridge with bottom mount freezer
- Stainless steel microwave hoodfan combo
- Designer Venmar stainless steel chimney style hoodfan*
- Contemporary style full wrap cabinets with soft close hardware
- Quartz countertops throughout kitchen
- Undermount double bowl stainless steel sink
- Grohe chrome single lever faucet with dual spray feature
- Modern pendant lighting at island/breakfast bar
- Under cabinet puck lighting
- Full height ceramic tile backsplash

LUXURIOUS BATHROOMS

- Quality Delta Vero single lever faucets and fixtures
- Hand-set ceramic tile floor
- Soaker tubs with ceramic tile surround with designer accents
- Oversized shower with ceramic tile surround and frameless glass doors
- Contemporary style full wrap cabinets with soft close drawers
- Quartz countertop with undermount sink
- Full width mirrors with designer lighting
- Medicine cabinet mirrors in ensuites

REFLECTIONS AMENITIES

- Located on coveted 'River Road' with south facing views of the Fraser River
- Walking distance to downtown Maple Ridge shops and services
- Located on key transit route with easy access to West Coast Express station

*select homes only

CONTACT US

Phone us at 604.467.0692

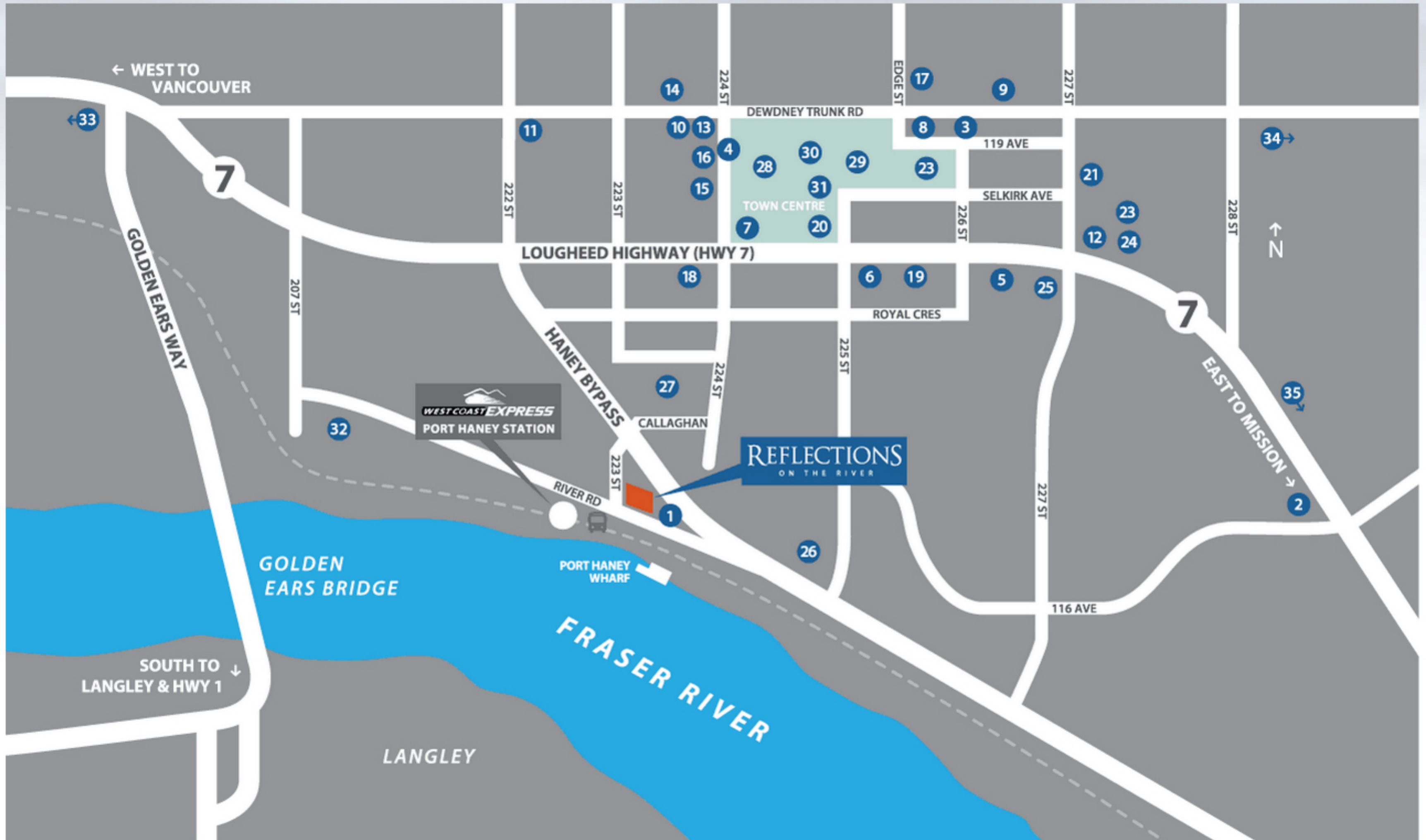
E-mail us at info@reflectionsliving.com

SITEMAP

HOME FEATURES PLANS GALLERY AMENITIES FALCON HOMES CONTACT



Nestled against the Coast Mountains with the Fraser Valley to the south and east, Maple Ridge is a community that offers a vibrant small-town atmosphere with great shopping, restaurants, culture and surrounded by limitless outdoor recreational opportunities.



EAT & DRINK

- 1 Billy Miner Alehouse & Cafe
- 2 Frogstone Grill
- 3 Lava Dining & Lounge
- 4 Trevi Gelato & Espresso
- 5 Smile Thai Cuisine
- 6 Kimi Sushi
- 7 Tim Hortons
- 8 Sagres Restaurant
- 9 Starbucks
- 10 Il Corsaro Pasta Bar
- 11 La Trattoria
- 12 Red Robin
- 13 Silver House Restaurant
- 14 Ebi Sushi
- 15 Shinobi Japanese Restaurant
- 16 Chameleon Cafe
- 17 Paliotti's
- 18 Noor's Cuisine
- 19 Pyrgos Taverna
- 20 Bella Vita Restaurant
- 21 Big Feast Bistro
- 22 Starbucks

SHOP

- 23 Haney Place Mall
 - Thrifty Foods
 - Target
 - Alouette Dental
 - Kin's Farm Market
 - Haney Bakery
- 24 Valley Fair Mall
 - London Drugs
 - BC Liquor Store
 - Save-On-Foods

PLAY

- 25 Chances Casino
- 26 Brickwood Park
- 27 Callaghan Park
- 28 Memorial Peace Park
- 29 ACT Arts Centre & Theatre
- 30 Maple Ridge Public Library
- 31 Leisure Centre
 - Pools
 - Fitness Centre
 - Raquetball/Squash Courts
- 32 Maple Ridge Golf Course
- 33 Pitt Meadows Golf Clubs
 - Meadow Gardens
 - Pitt Meadows Golf Club
 - Golden Eagle Golf Club
 - Swaneset Bay Resort & Country Club
- 34 Golden Ears Provincial Park
 - Hiking/Mountain Biking
 - Camping
 - Alouette Lake/Boating
 - Picnicking
- 35 Kanaka Creek Regional Park
 - Hiking
 - Picnicking

CONTACT US

Phone us at 604.467.0692

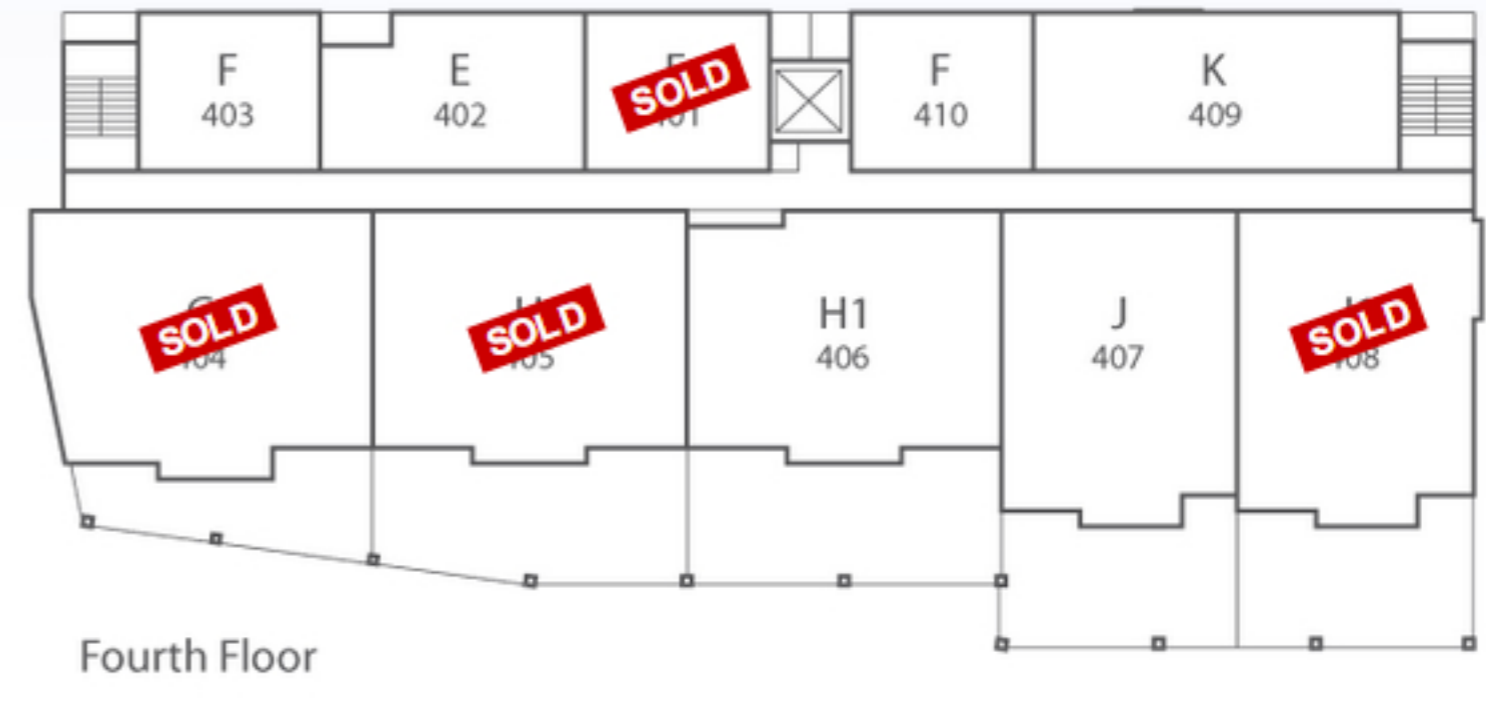
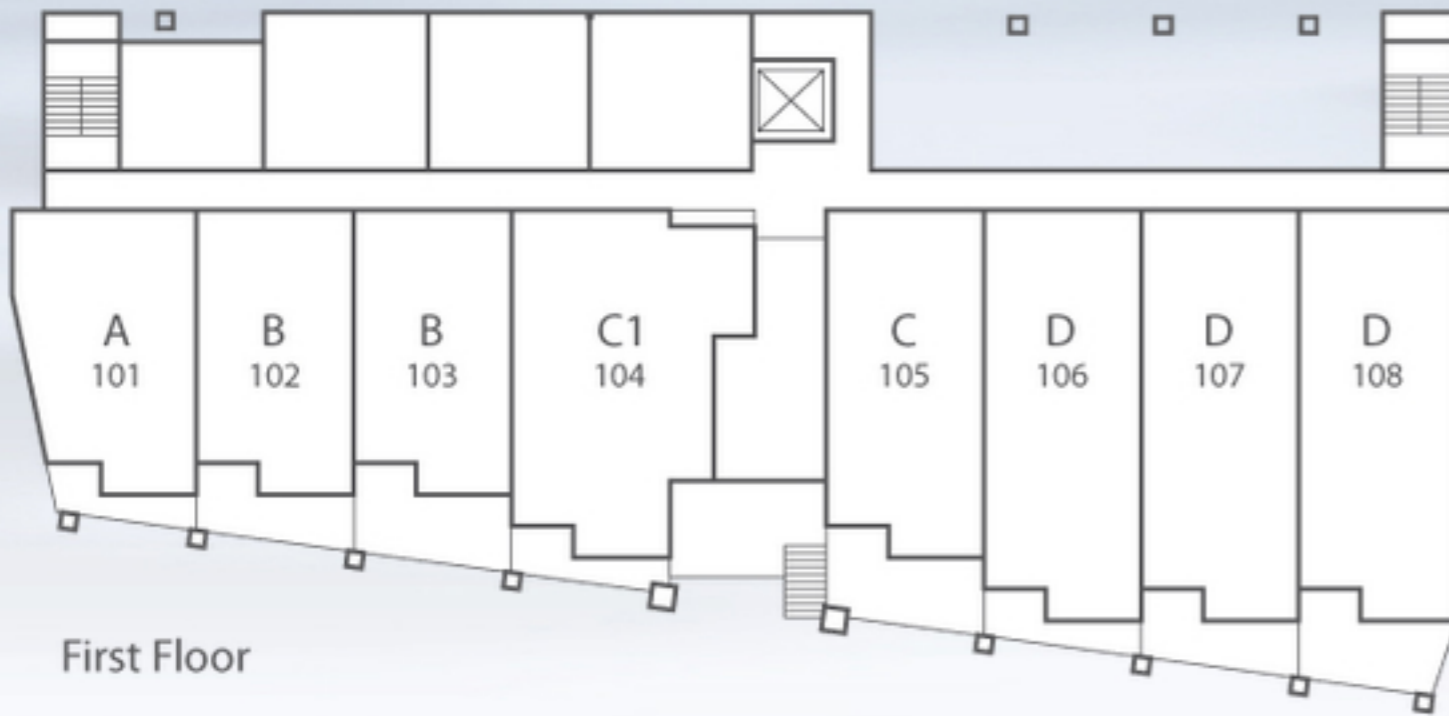
E-mail us at info@reflectionsliving.com

SITEMAP

HOME FEATURES PLANS GALLERY AMENITIES FALCON HOMES CONTACT



Select an individual unit to view its floor plan



[↓ DOWNLOAD FLOOR PLANS](#)

CONTACT US

Phone us at 604.467.0692

E-mail us at info@reflectionsliving.com

SITEMAP

[HOME](#) [FEATURES](#) [PLANS](#) [GALLERY](#) [AMENITIES](#) [FALCON HOMES](#) [CONTACT](#)



CONTACT US

Phone us at 604.467.0692

E-mail us at info@reflectionsliving.com

SITEMAP

[HOME](#) [FEATURES](#) [PLANS](#) [GALLERY](#) [AMENITIES](#) [FALCON HOMES](#) [CONTACT](#)

CONTACT US

Numbers:

T: [604.467.0692](tel:604.467.0692)

E-mail:

info@reflectionsiving.com

Presentation Centre & Display Suite:

22327 River Road
Maple Ridge, BC, BC

Presentation Centre Hours:

Open daily noon-5pm



REGISTER NOW

Thanks for visiting our website. If you'd like to receive more information on Reflections at Falcon Centre, please enter your details below and we'll make sure to get back to you as soon as possible!

TITLE YOUR NAME *

TELEPHONE

ALTERNATE TELEPHONE

I AM A REALTOR YES NO

I AM WORKING WITH A REALTOR YES NO

MY AGE CATEGORY IS

I'M LOOKING TO PURCHASE

MY PRICE RANGE IS

MY CURRENTLY

I WOULD LIKE TO RECEIVE INFORMATION BY PHONE E-MAIL MAIL

ADDRESS

CITY

PROVINCE/STATE POSTAL/ZIP *

E-MAIL ADDRESS

I HEARD ABOUT REFLECTIONS FROM

COMMENTS

Information collected is not shared with any other party. By registering, you consent to receiving information from Falcon Homes about this and other projects that may be of interest. Should you wish to be excluded, please email us at info@signaturefalconcentre.com or click the appropriate link at the bottom of any email received.