



LAMEENA TERRACE

Life starts here



Now Selling From \$199,900 - GST Included - 11 Distinctive Floor Plans, Parking, Storage...

[More »](#)

SHOW HOME



FLOOR PLANS



HOUSEWARMING GIFT



Welcome to Lameena Terrace, Langford BC

Easy stroll to great shopping, dining, lakes, golfing, recreation, schools, the Galloping Goose trail and public transportation...

Open House Sat. & Sun 2-4pm
2655 Sooke Road, just past Jackin Road

FEATURES

- Tasteful Decor
- Designer Finishes
- Granite Counters
- Laminate Flooring
- Secured Parking
- High Ceilings and more...

[Learn more »](#)

Close to everything, but miles from ordinary...

The residences at Lameena Terrace are among the finest on the West Shore. Designed from the ground up to deliver stylish living, Lameena Terrace is perfect for your modern lifestyle. With all the amenities and features you'd expect in a premium residence, at prices that will surprise you!





LAMEENA TERRACE

Condo Features & Amenities

Close to everything, but miles from ordinary...

Easy stroll to great shopping, dining, lakes, golfing, recreation, schools, the Galloping Goose trail and public transportation.

The residences at Lameena Terrace are among the finest on the West Shore.

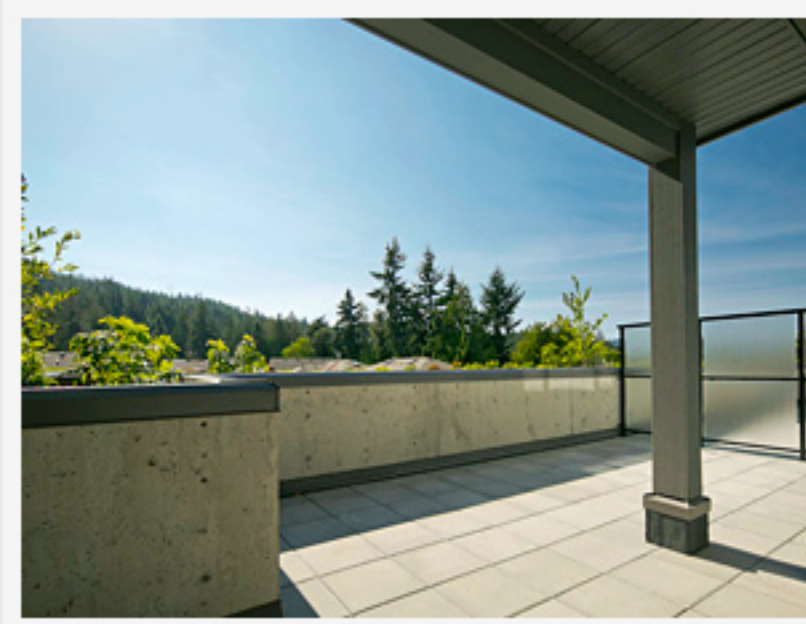
Lameena Terrace has been designed from the ground up to deliver stylish living. Perfect for your modern lifestyle, with all the amenities and features you'd expect in a premium residence at prices that will surprise you!



- [Condo Features](#)
- [Site Plan | Floor Plans](#)
- [Interior Design](#)
- [Housewarming Gift](#)

Features Include:

- Granite countertops
- Laminate flooring
- Secure covered parking
- Stainless steel appliances
- Expansive decks and garden patios
- Separate storage lockers
- High / vaulted ceilings
- Designer features
- Custom lighting
- Generous closets



11 Distinctive Floor Plans to Choose From:

- 1 bedroom
- 1 bedroom + den
- 2 bedrooms, 2 bathrooms
- 2 bedrooms, 2 bathrooms + den

Homes at Lameena Terrace range from 600 to 1,200 sq. ft.





LAMEENA TERRACE

Lameena Terrace Price Sheet

Purchase price includes GST:

Suite	Floorplan	Size (sq ft)	Monthly Strata Fee	Price	Status
201	1 Bed + Den	856	\$175	\$239,900	SOLD
301 / 401	1 Bed + Den	856	\$175	\$229,900	SOLD
203	1 Bedroom	574	\$126	\$229,900	Available
303	1 Bedroom	574	\$126	\$199,900	Available
403	1 Bedroom	574	\$126	\$219,900	Available
205	1 Bed + Den	842	\$170	\$239,900	SOLD
305	1 Bed + Den	842	\$170	\$229,900	SOLD
405	1 Bed + Den	842	\$170	\$229,900	SOLD
207	1 Bedroom	755	\$167	\$229,900	Available
307	1 Bedroom	755	\$167	\$224,900	SOLD
208	1 Bed + Den	753	\$165	\$239,900	Available
308 / 408	1 Bed + Den	753	\$165	\$229,900	Available
209	1 Bedroom	715	\$158	\$229,900	Available
309	1 Bedroom	715	\$158	\$224,900	Available
210	2 Bed / 2 Bath + Den	1083	\$240	\$289,900	SOLD
310, 410, 412	2 Bed / 2 Bath + Den	1083	\$219	\$279,900	SOLD
211	1 Bedroom	699	\$155	\$249,900	Available
311 / 411	1 Bedroom	699	\$155	\$239,900	Available
212	2 Bed / 2 Bath + Den	1083	\$219	\$289,900	SOLD
312	2 Bed / 2 Bath + Den	1083	\$240	\$279,900	SOLD
213	2 Bed / 2 Bath + Den	1083	\$219	\$299,900	SOLD
313 / 413	2 Bed / 2 Bath + Den	1083	\$219	\$289,900	SOLD
214	2 Bed / 2 Bath	895	\$199	\$279,900	Available
314 / 414	2 Bed / 2 Bath	895	\$199	\$279,900	Available
215 / 217	2 Bed / 2 Bath + Den	1083	\$219	\$299,900	SOLD
315, 415, 317, 417	2 Bed / 2 Bath + Den	1083	\$219	\$289,900	SOLD
216	2 Bed / 2 Bath + Den	1139	\$232	\$299,900	SOLD
316 / 416	2 Bed / 2 Bath + Den	1139	\$232	\$289,900	SOLD
407	1 Bedroom	755	\$167	\$224,900	SOLD
409	1 Bedroom	715	\$158	\$224,900	SOLD





LAMEENA TERRACE

Local Amenities

City Centre Park and Westhills Arena

[City Centre Park](#) is Langford's "everything" active entertainment zone, designed and coordinated by the City's Parks Department. It features the Sportsplex, Langford Lanes and an NHL-size ice rink with 400 seats and party rooms all on one site. During the winter, City Centre Park features an Outdoor Skating Rink. In the summer, the Splash Park is the place to be to beat the heat.



[Eagle Ridge Community Centre](#) offers facilities are also available to host birthdays and community events. In the Community Centre's Arena, roller, ball hockey and lacrosse teams leagues play year round. The *Eves of Destruction*, Vancouver Island's own roller derby league, compete regularly in exciting combat.

[Family Fun Park](#) is for the kids (and the adults). The mini-golf course winds through an 18-hole adventure of pirates, Aztec ruins, and buried treasure. Little kids can then climb and crawl through the Gold Rush-themed PlayZone, one of the biggest indoor playgrounds on southern Vancouver Island. For adults, there are couches, coffee and magazines to relax with while the kids are at PlayZone.



[Bear Mountain Stadium](#) plays host to our country's own [Rugby Canada](#) as they compete against the biggest and best in national and international games, and the Victoria Rebels Football team calls the stadium home. The Bear Mountain Stadium is built to FIFA 2 Star Rated and IRB specifications, able to accommodate soccer, football, and rugby matches, seats 1218 under cover, and has 10 Corporate Suites. Beside the Stadium sits a second full-sized artificial turf field.

Also nearby and within walking distance of Lameena Terrace is the [Westshore Town Centre](#) with over 75 shops, movie theaters and several "big box" retail outlets: WalMart, Canadian Tire, Rona and Homesense.



Juan de Fuca Recreation Centre



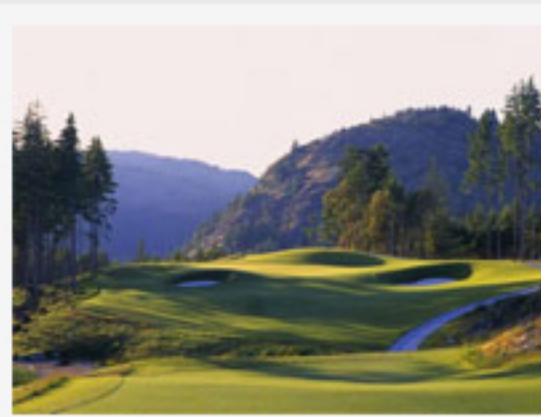
[Juan de Fuca Recreation Centre](#) is West Shore's premier recreation facility. Located along the Old Island Highway, the Centre includes *Bear Mountain Arena*, swimming pool, weight room, fitness studio, nine-hole Juan de Fuca Golf Course, playing fields, ball; diamonds, basketball courts with lights, four greens for lawn bowling, a world class BMX track, private meeting rooms ready for reservation, and much more. Behind the Bear Mountain Arena and the Clubhouse is WildPlay West Shore Element Park, a tree-to-tree aerial obstacle course in the Douglas fir canopy.

Goldstream Station Market

[Goldstream Farmers' Market](#) is active on Saturdays during the summer, and is located in the heart of Langford's city centre along Bryn Maur Road, a pedestrian-friendly, cobblestoned street modeled after Dutch "woonerfs". By providing an outlet for the farmers and artists of Langford and West Shore, the market supports and promotes a sustainable and vibrant local agricultural industry and artisan community. Local musicians and entertainers provide atmosphere throughout the day and non-profit groups share their community stories. Come sample some locally grown processed agricultural products and artisan crafts!



Bear Mountain Golf and Country Club



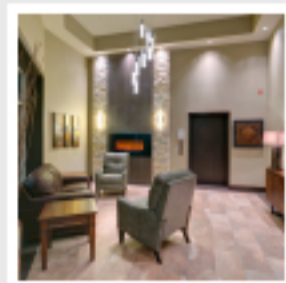
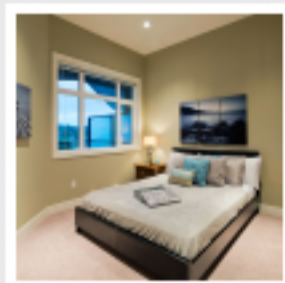
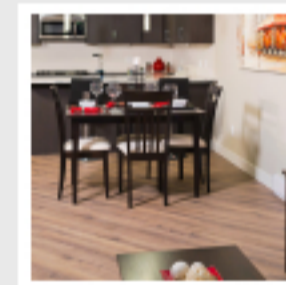
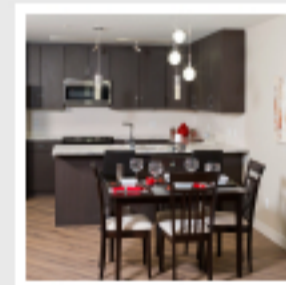
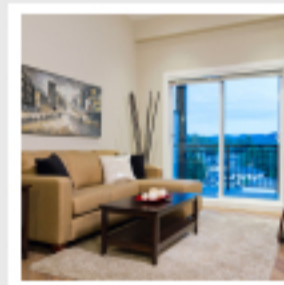
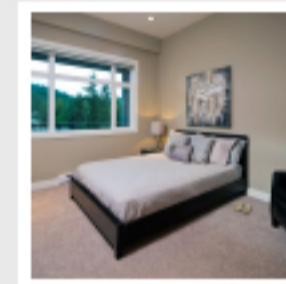
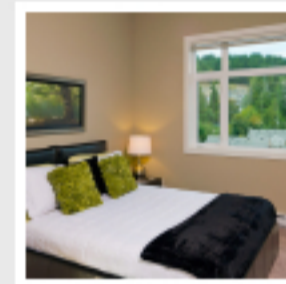
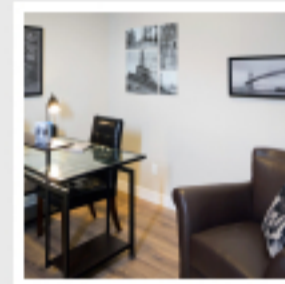
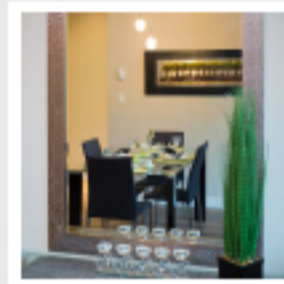
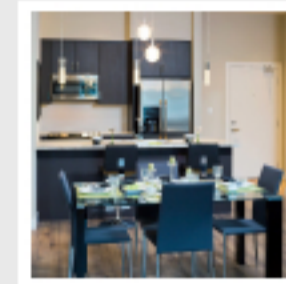
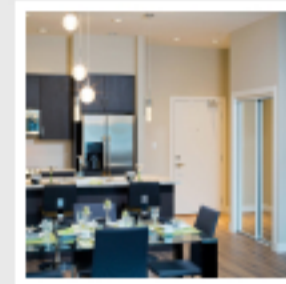
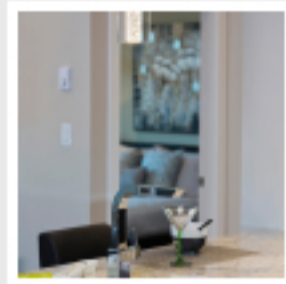
[Bear Mountain Golf and Country Club](#) is a breathtaking Canadian golf resort situated in the foothills of Mount Finlayson, with captivating views of the beautiful Victoria city skyline, the Pacific Ocean, Mount Baker, and everything in between. There are two courses at Bear Mountain Golf Resort - the *Mountain Course* and the *Valley Course* - each with their own unique character and setting. Both offer superb playability in a lush, West Coast environment. As the only 36-hole Jack Nicklaus-designed property in Canada, Bear Mountain specializes in tournaments from small corporate and social groups of 16 to large scale events with the ability for a double shotgun start for 288 golfers. The resort also hosted the 2010 Telus World Skins Game, won by Canadian Mike Weir.





LAMEENA TERRACE

Show Home





LAMEENA TERRACE

About the Developer

Lameena Terrace is the latest residential offering in the developer's portfolio of *Exceptionally Planned Construction Projects* where, for the past 20 years, quality and fine workmanship have been showcased in outstanding award-winning developments that include Broadmead Terrace and Creekside Village.

Lameena Terrace is proud to provide a **10-Year Warranty** on all its homes, and has maintained a flawless performance record with national home warranty for decades. The developers only hire the best trade contractors and suppliers, hence the quality of workmanship and materials is guaranteed.

Customer satisfaction has proven to be a hallmark of distinction that the developers strongly embrace and maintain as "Job One". Every detail - big or small - is important to the developers, and leads to more very happy buyers!

Lameena Terrace has been designed to offer many options in floorplans, price ranges and lifestyles, and all the beautiful suites already have the upgrades that buyers dream about!



Copyright © 2013 - 2015 · Lameena Terrace - Langford, BC
Brad Gregory, REALTOR® | John Percy, REALTOR®
A Victoria BC Real Estate Website by Radar Hill Web Design
The content of this website is the responsibility of the website owner.

RE/MAX Camosun
4440 Chatterton Way
Victoria, BC V8X 5J2



RE/MAX
CAMOSUN





LAMEENA TERRACE

Contact Us



Brad Gregory, REALTOR®

P: 250.744.3301

**BRAD
GREGORY**
250-744-3301



John Percy, REALTOR®

P: 250.508.1551

**JOHN
PERCY**
250-508-1551

RE/MAX Camosun

4440 Chatterton Way

Victoria, BC V8X 5J2

info@lameenaterrace.com

Use the form below to contact us:

Name *

Email Address *

Comments *

What is 5 + 2? *

** denotes a required field.*

SEND

