

THIS IS WHAT FREEDOM LOOKS LIKE:

A MODERN CONCRETE HOME WITH AIR CONDITIONING, STORAGE, AND ALL THE FEATURES OF A DESIRABLE NEW HOME.



HOMES FROM 1,047 - 1,289 SQUARE FEET
FROM \$589,900 TO \$710,900



free + easy

Beverley's homes seamlessly mirror their serene White Rock setting. Comfortable air conditioning meets the sweetness of the sea breeze. Gently terraced concrete construction on a natural rise offers brilliant views inside your home and from your generous balcony. And details like the luxurious CresseyKitchen™ and lock-and-leave security will give you the new-found freedom you've been looking for.

What's more, the homes at Beverley were designed to give you all the space you need to live comfortably. These generous residences come with innovations that only Cressey delivers, including clever storage solutions, unmatched materials, and smart layouts that easily fit your furnishings.



THE CRESSEYKITCHEN™

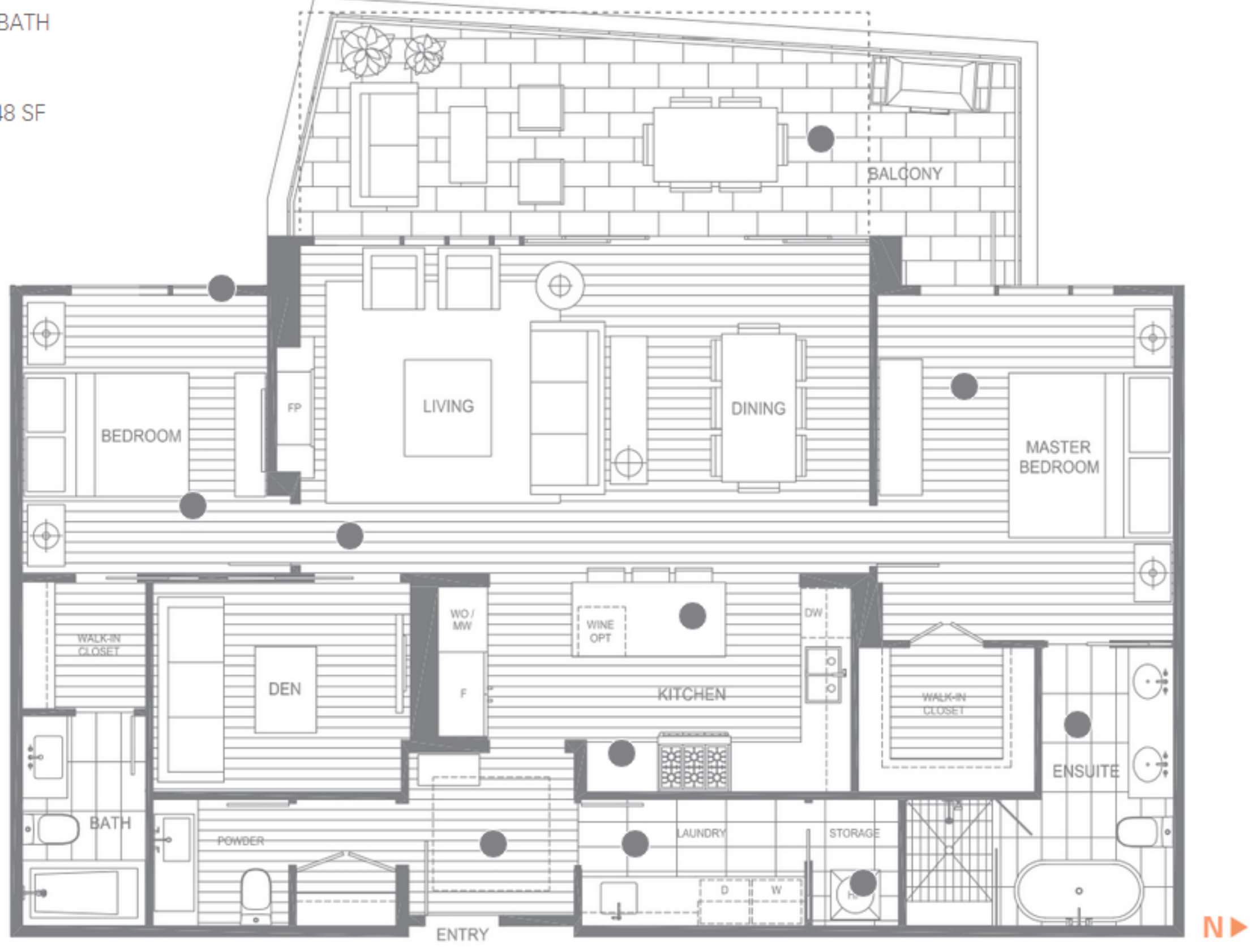
What began as a dedication to transform the heart of a home in ways never before seen has resulted in the admired CresseyKitchen™. Renowned for its design, elegance, spaciousness and modernity, the CresseyKitchen's™ innovative walk-through design effortlessly connects with living and outdoor spaces, while its European cabinetry, seamless Chef's Wall, integrated appliances, clever storage and ample counter space provide an indulgent level of convenience. It's a must-have feature that our buyers talk about passionately—almost as passionately as the team here at Cressey.



Arbutus Ridge

LIVES JUST LIKE A SINGLE-FAMILY HOME

PLAN A
2 BEDROOM, 2.5 BATH
DEN + STORAGE
1,289 SF
OUTDOOR: 189-248 SF



REGISTER NOW

HOMES
Interior Features
CresseyKitchen™

ARCHITECTURE
Exterior
Siteplan

AMENITIES
Exclusive Facilities

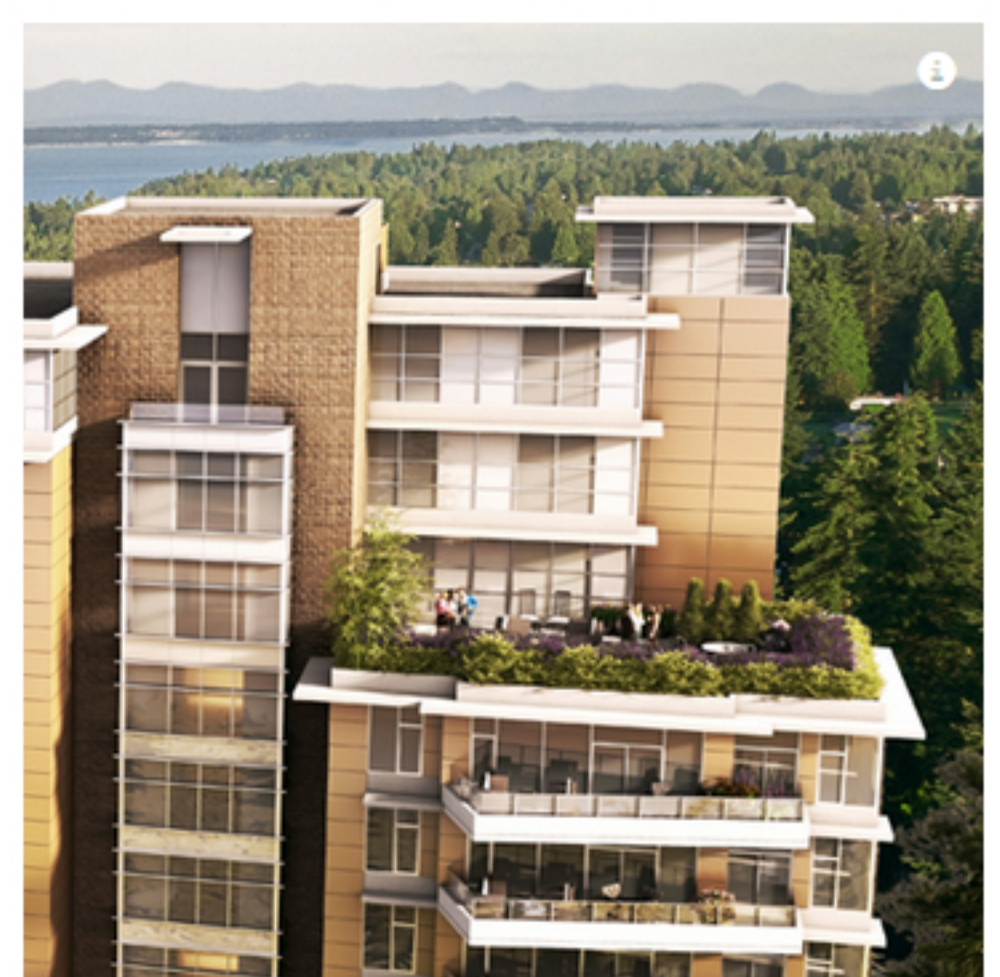
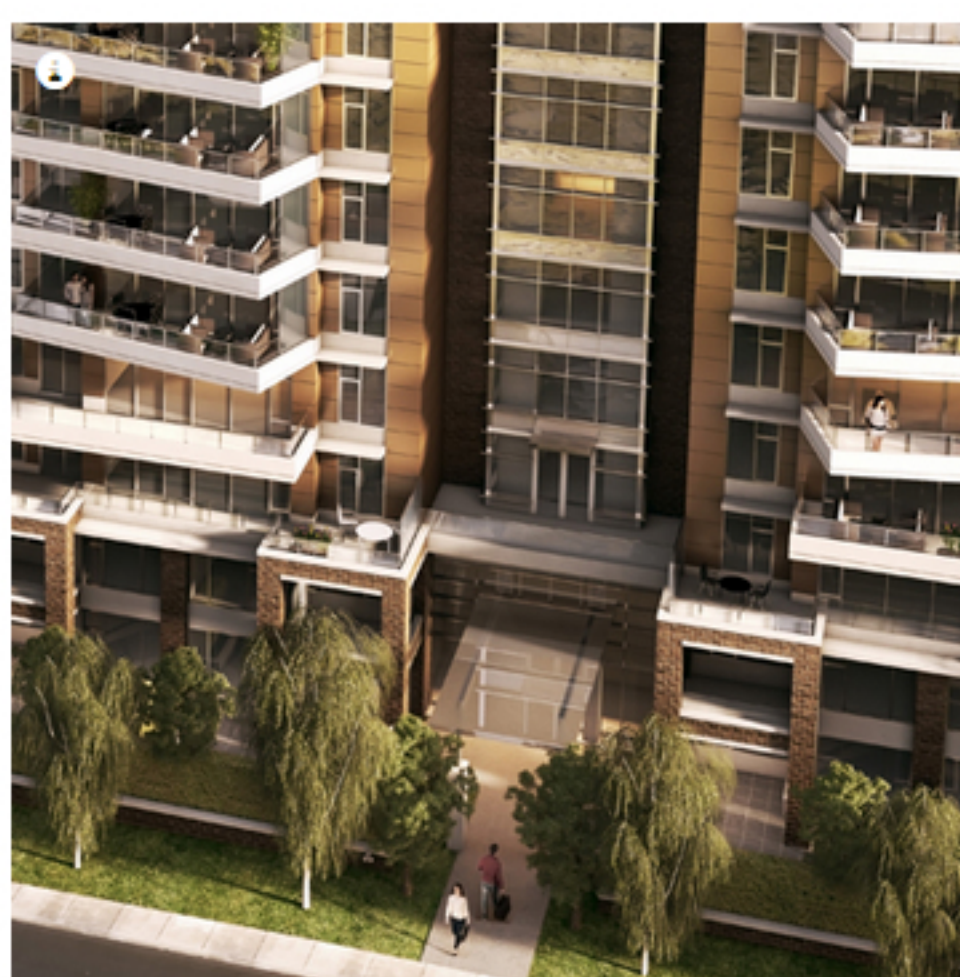
LOCATION
Neighbourhood
Location Map

CRESSEY
About Cressey
Portfolio



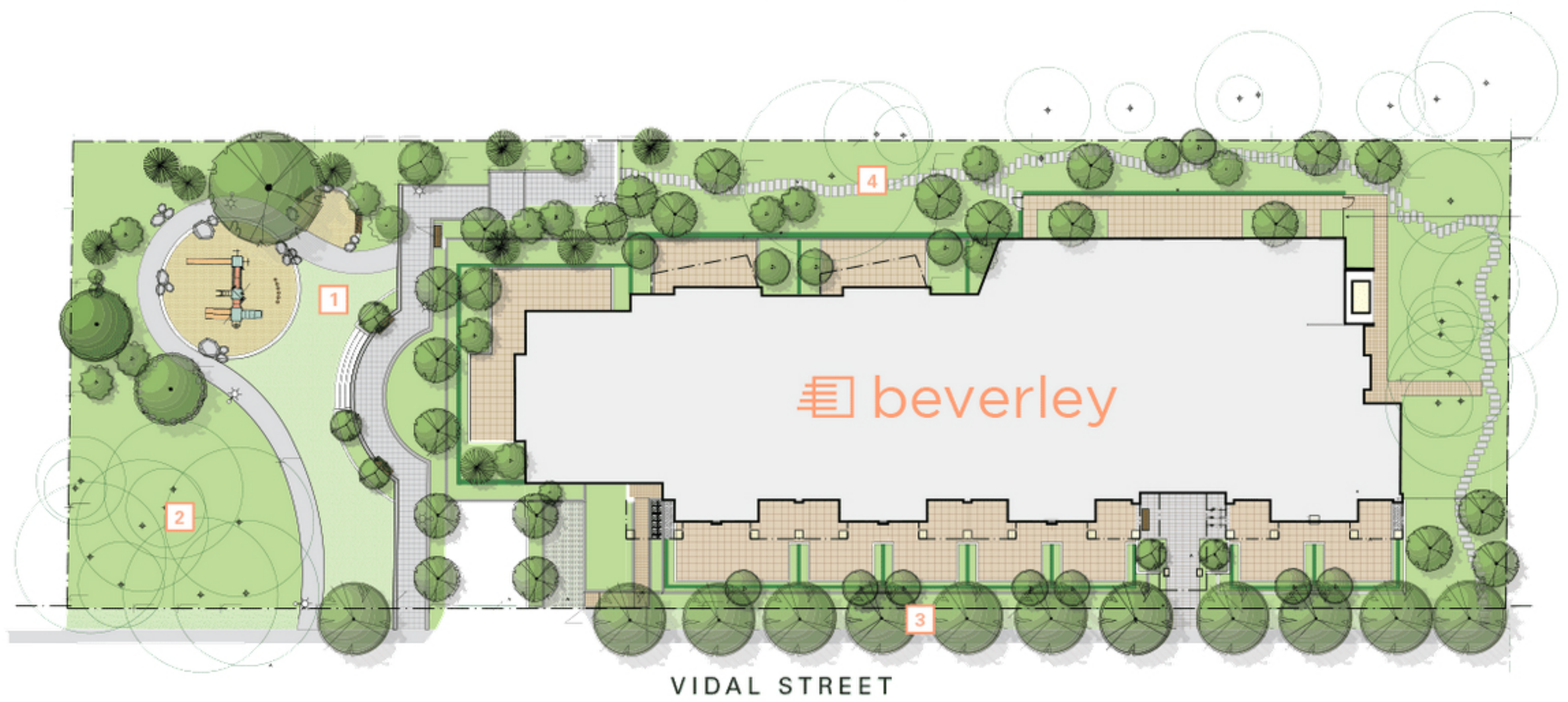
free form

Architecturally, Beverley has been crafted to be both modern and timeless. Generous use of glass and concrete provide a stylish and remarkably quiet living experience. With its gently terraced architecture, Beverley home owners will be sipping their morning coffee in front of noteworthy views, including south-facing panoramas of the steel-blue Pacific waters.



NATURE SURROUNDS YOU

Cressey chose this idyllic spot on Vidal Street between North Bluff Road and Thrift Avenue for its serenity, convenience and the dramatic water views that come from its hillside location. Living in this privileged spot means being able to immerse yourself in the lush, landscaped grounds at a moment's notice. Or take a stroll on the connected trail system or along the peaceful side streets to the shops, dining and the pristine White Rock waterfront.



1 NATURAL CONVENIENCE
Enjoy an invigorating picnic in the park, or take a shortcut through nature to Everall Street.

2 ABUNDANT TREES
The natural serenity of the property is enhanced by preserving many of its original Douglas Firs, Japanese Maples and Western Red Cedars.

3 URBAN SANCTUARY
A landscaped buffer of trees, plants and hedges protects your privacy and creates a calming and quiet oasis.

4 WALKING PATH
Unwind to the sound of birdsong with a leisurely stroll around the perimeter pathway, nestled between trees and woodland plants.

REGISTER NOW

HOMES
Interior Features
CresseyKitchen™

ARCHITECTURE
Exterior
Siteplan

AMENITIES
Exclusive Facilities

LOCATION
Neighbourhood
Location Map

CRESSEY
About Cressey
Portfolio



ROOFTOPTERRACE AT BEVERLEY

free_{time}

Walk into The Beverley Club, a stunning two-storey, residents-only amenity space where a world of entertainment and recreation options await. Keep up your strength and endurance in the state-of-the-art fitness centre, then enjoy a leisurely soak in the whirlpool. Breathe in the warm eucalyptus from The Beverley Club's steam room or practice your favourite stroke in your own private lap pool. Friends and family will love the amenities too, especially with 30+ visitor parking spaces and a comfortable, overnight guest suite to make visits extra convenient.



SAUNA & STEAM ROOM

Beverley has both a soothing sauna and steam room to heal and rejuvenate, offering you a daily dose of tranquil relaxation.



POOL

With perfect water temperatures all year long, Beverley's indoor lap pool refreshes both body and senses.



SPA

A warming soak in the hot tub is a perfect way to start or end the day, relieving tension, aches and pains.



FITNESS CENTRE

An on-site, fully equipped fitness facility with a eucalyptus steam room located just downstairs is yours to use 24 hours a day.



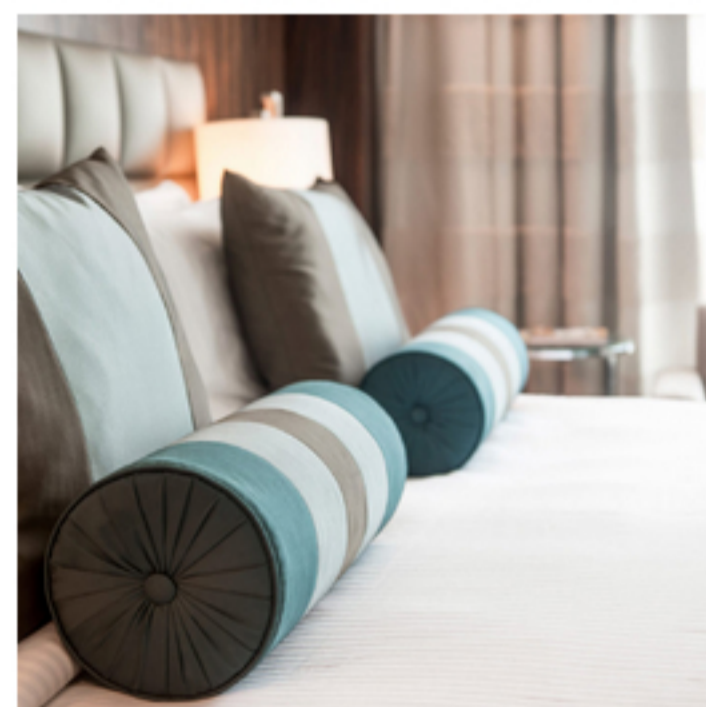
CONCIERGE SERVICE

A friendly concierge will be on hand to assist you, including signing for package, putting grocery deliveries into the refrigerated storage room and letting housekeepers or guests into your home.



PLAYGROUND & GARDEN

Wander the extensive gardens, offering shaded seating areas and a fun children's playground.



GUEST SUITE

Now you have a convenient place for visiting friends or family to stay when they're in town - their own quaint, comfortable guest suite.



OPEN AIR ROOFTOP TERRACE

Barbecue or gather with your new neighbours on Beverley's rooftop patio, where the fresh-air lounge and dining area make everything taste better.

REGISTER NOW

HOMES

Interior Features
CresseyKitchen™

ARCHITECTURE

Exterior
Siteplan

AMENITIES

Exclusive Facilities

LOCATION

Neighbourhood
Location Map

CRESSEY

About Cressey
Portfolio



care free

Known as a friendly, sunshine-rich slice of heaven, this quiet pocket of White Rock has almost too many advantages to count. The beach and nearby greenspaces give it a peaceful beauty, while its proximity to the Peace Arch Crossing, lush golf courses, the Tsawwassen ferry terminal and Highways 99/91 make it easy to take adventurous outings. At Beverley, you're free to stay and free to go, and both are sure to delight.



DINING

White Rock's abundant casual and fine dining options are just a stroll away along the promenade and Marine Drive.



SHOPS

Semiahmoo Shopping Centre, downtown boutiques, and the new outdoor Shops at Morgan's Crossing are all minutes from home.



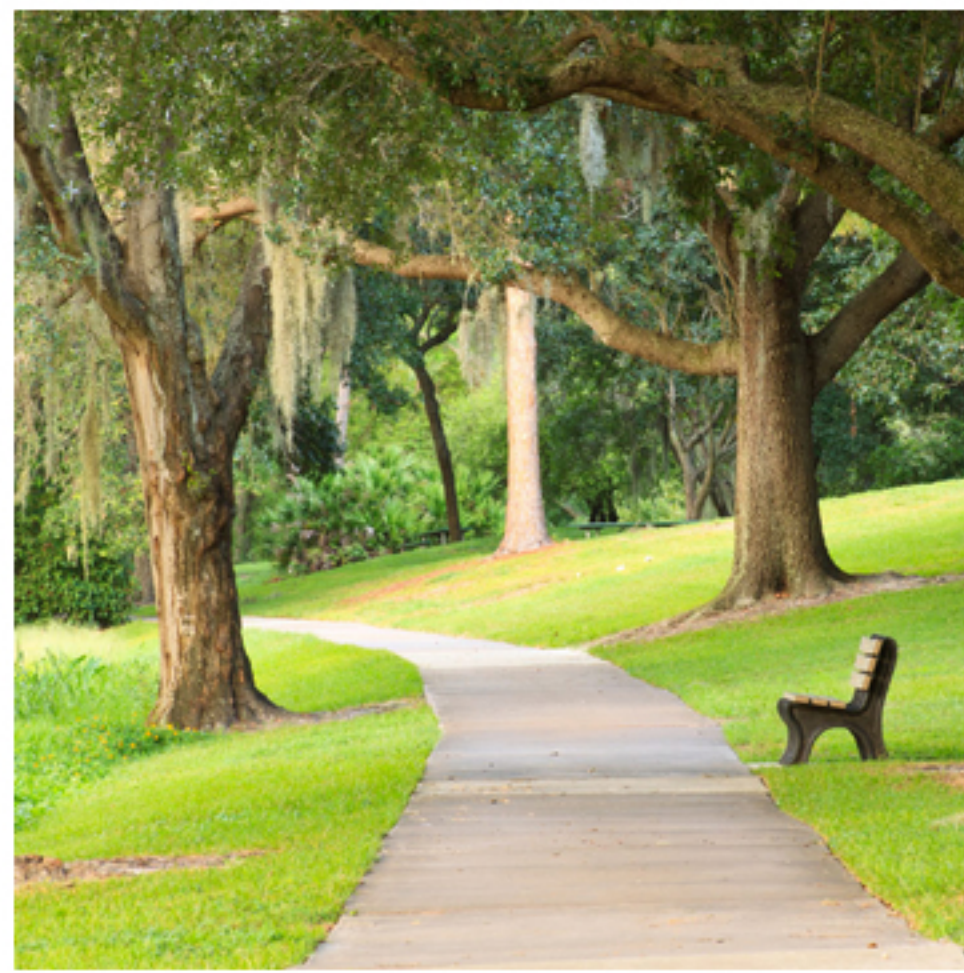
USA BORDER

With the Peace Arch crossing less than 15 minutes away, stateside shopping, entertainment and excursions are within easy reach.



GOLF

Beverley is minutes from Hazelmere's championship 18 holes as well as more casual courses like Peace Portal and Meridian Par 3.



PARKS

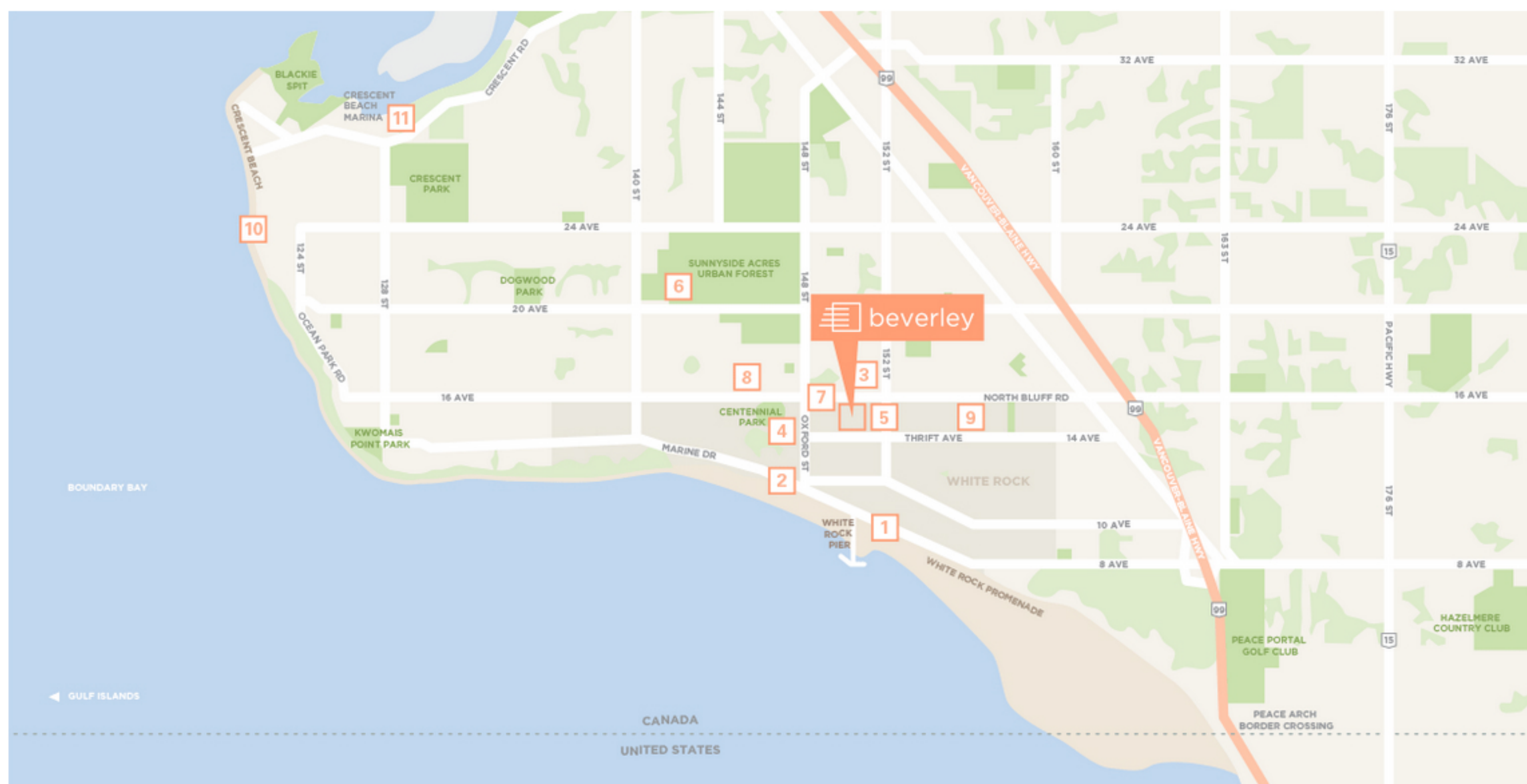
Forested nature trails, lawn bowling, athletics and off-leash dog parks await at nearby Centennial Park and Sunnyside Acres Urban Forest.



BEACHES

Visitors come from far and wide to experience these neighbourhood shores – from hip West Beach to pristine Crescent Beach.

ONLY 10 MINUTES TO:



1 THE PIER & PROMENADE

White Rock's stunning and iconic two-kilometre promenade is great for a robust daily ritual or a weekend stroll.

2 WHITE ROCK DINING

White Rock's impressive selection of restaurants – from gourmet to grab-and-go – rival those of any world-class city.

3 SEMIAHMOO

From groceries to prescriptions to postal services, essentials are close-at-hand at Semiahmoo Shopping Centre, just two blocks away.

4 CENTENNIAL PARK

This lively, all-season park offers athletics, greenery, poetry readings, art exhibits and even cooking classes at the Rustic Gourmet cafe.

5 FARMERS MARKET

Miramar Plaza is the place to be on summer Sundays for local, farm-fresh produce and all things artisanal.

6 SUNNYSIDE ACRES URBAN FOREST

Try to spot the rare orchid, Rattlesnake Plantain, in this 130-acre oasis of second-growth forest, birds and black-tailed deer.

7 WHITE ROCK COMMUNITY CENTRE

Enjoy drop-in and registered fitness classes, and arts and social programs for all ages just blocks from home.

8 CENTENNIAL ARENA

Play ice hockey or figure skate throughout the chilly months, and lacrosse or ball hockey when spring arrives.

9 PEACE ARCH HOSPITAL

A full range of integrated preventative and acute health services and 24 hours-a-day emergency access is within easy reach.

10 CRESCENT BEACH

Enjoy these soft golden shores or take advantage of the Crescent Beach Swim Club, a local facility offering swimming, sailing, tennis, water polo, and triathlon lessons to kids.

11 CRESCENT BEACH MARINA

Need a mooring or boat repair? Crescent Beach Marina offers both, as well as hardware, supplies and dry storage.

REGISTER NOW

HOMES

Interior Features
CresseyKitchen™

ARCHITECTURE

Exterior
Siteplan

AMENITIES

Exclusive Facilities

LOCATION

Neighbourhood
Location Map

CRESSEY

About Cressey
Portfolio