

METRO VANCOUVER'S MOST AFFORDABLE WATERFRONT WITH SKYTRAIN AT YOUR DOOR

1 BEDROOM HOMES FROM \$229,900
2 BEDROOM HOMES FROM \$339,900

WHY RIVERSKY



Here, your dream of waterfront living becomes a reality. Homes reach for the sky, with endless river and city views. Sunny outdoor lounges on the roof, the Esplanade boardwalk at your front door, the River Market's shops and restaurants adjacent, and a SkyTrain station within steps.

A Waterfront Community

RiverSky puts everything your urban heart desires here at the water's edge.



WATERFRONT

TRANSLINK

VALUE

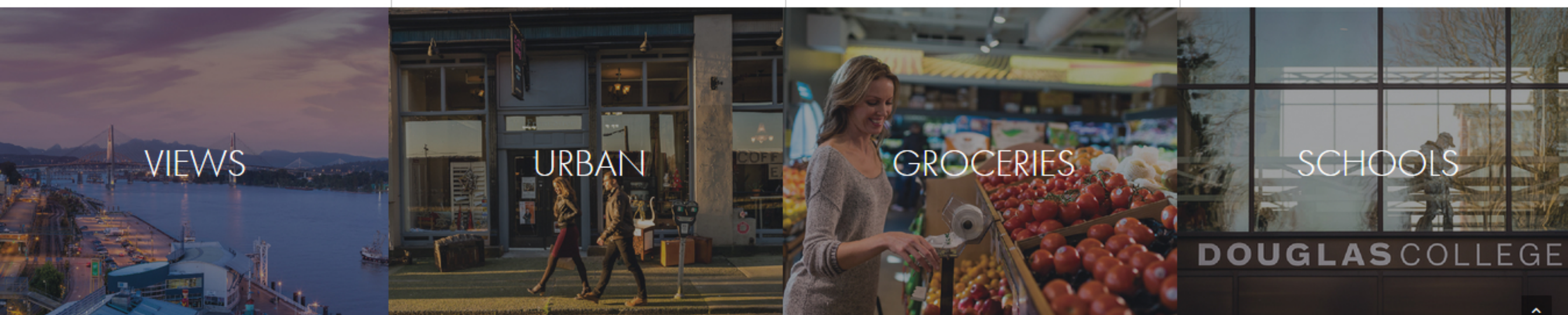
BOSA QUALITY

At your front door is the Fraser River and Esplanade boardwalk. Admire sunset reflected in the water and watch boats sailing out to sea whenever you walk the dog or pop out for groceries.

SkyTrain is only steps from your door, for quick and easy connections to wherever you need to go. Read, relax, or send a few emails as you ride to Vancouver in 15 minutes or Metrotown in 10.

This is unbeatable value. Waterfront living is always a strong resale benefit, and RiverSky is significantly more affordable than waterfront in other Metro Vancouver communities.

With more than 50 years of developing Metro Vancouver's most successful communities, the Bosa name is known for exceptional design, quality construction, and enduring value.



VIEWS

URBAN

GROCERIES

SCHOOLS

DOUGLAS COLLEGE

At your window is the ever-changing sky. Sunrise and sunset splash colour onto the river as fishing boats head to and from the sea. Majestic mountains and dramatic bridges frame your views and at dusk, the shimmer of city lights surrounds you.

Live by the urban comforts of great restaurants and shops. Visit Longtail Kitchen for Thai comfort food or The Boathouse for a steak and seafood feast with water views. Shop Brick and Mortar Living for stylish home accessories, cool vintage finds, and unique gifts.

Next door at River Market, Donald's Market is your daily go-to for fresh produce, meat, cheese, and pantry items. The winter farmer's market brings local vegetables, beef, poultry, seafoods, and baked goods to your front door every other Saturday.

One of BC's largest public colleges, Douglas College is known for Bachelor's degree programs and its Continuing Education. Their focus is on university arts and science courses, as well as career programs in health care, business, and the creative arts.



Introducing RiverSky - by Bosa Properties



AFFORDABLE WATERFRONT, COMMUNITY SPIRITS

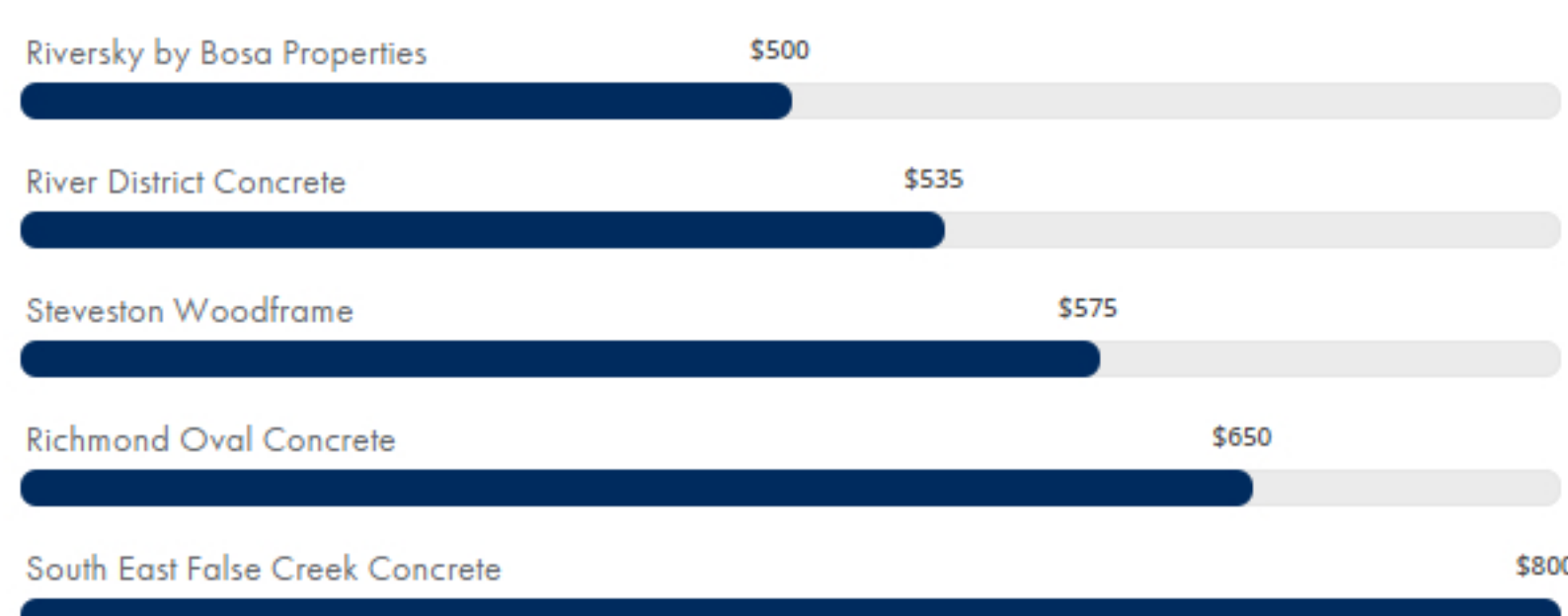
RiverSky is a quick SkyTrain ride from downtown Vancouver. New Westminster's design-forward boutiques and emerging food scene are drawing people from all over —buyers who are delighted to discover Metro Vancouver's most affordable waterfront in a thriving community.

SEE MORE VIDEOS

THE SMART MONEY KEEPS WATERFRONT IN VIEW

The limited supply and sheer desirability of waterfront make it one of the best investments you can make. As local urban planner Lance Berelowitz observes, "Waterfront locations are always in high demand." As well, neighbourhoods near rapid transit tend to reliably appreciate, and RiverSky is just steps from a SkyTrain station. New Westminster is the focus of considerable interest due to its parks, infrastructure, and commitment to urban renewal. Finally, Bosa's intelligent design and quality construction promise lasting beauty and enduring value. The Bosa name is one that resale buyers ask for when house hunting.

WATERFRONT CONDOMINIUM VALUES (price per sq. ft.)



Source: Urban Analytics, January 2015

NOW SELLING

LEAVE YOUR DETAILS TO RECEIVE THE LATEST RIVERSKY UPDATES.

First name*
Last name*
Phone*
Email*

How did you hear about RiverSky*
Choose...
Family Status*
Choose...
Are you a Realtor? * YES NO
Are you looking for commercial leasing opportunities? * YES NO
Become a Bosa Insider? * YES NO

SUBMIT

By selecting "Yes" to becoming a BOSA Insider, you consent to BOSA Properties Inc. and BlueSky Properties Inc. and their respective current and future affiliates and subsidiaries contacting you regarding their current and future products and services, event invitations, newsletters, announcements, promotions, incentives, and other publications. Rest assured that none of this information is sold or distributed to any other parties. You may withdraw consent at any time.

LIFE ON THE RIVER

A character neighbourhood on the Fraser, where food trucks dish it out at festivals on brick-lined heritage streets. A progressive community of food shops, design boutiques, and gastro-pubs. Right next door to RiverSky, River Market's shops and services include a specialty cheese shop, liquor store, and circus school to keep the kids busy. RiverSky's ground-level shopping mews and wide open breezeway connect the boulevard with the boardwalk, and you're just steps from a SkyTrain that will get you to Vancouver in 15 minutes. Upstairs, the rooftop entertainment lounge and gym look out to endless views.



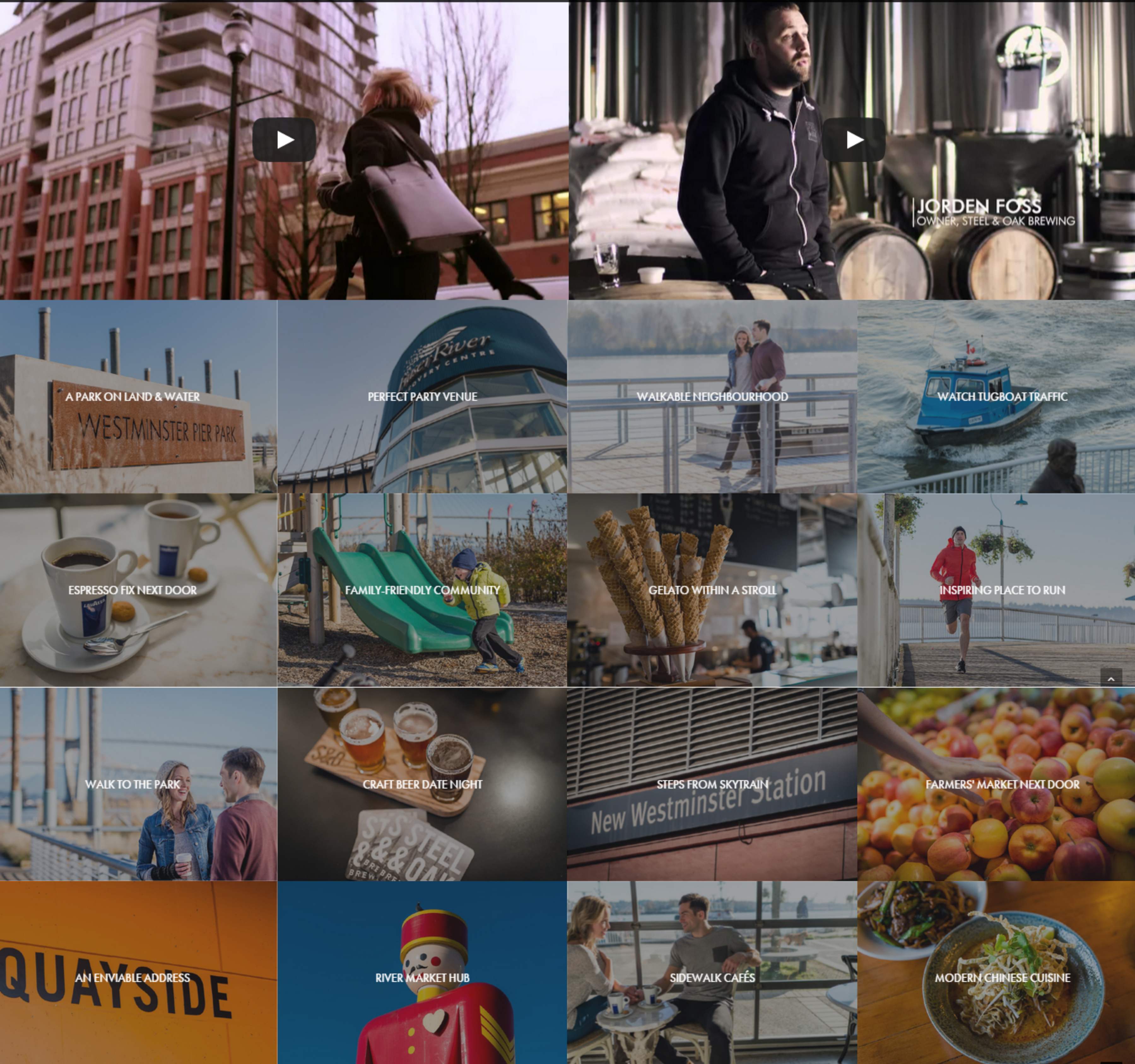
EVERYTHING UNDER THE SUN

Run along the Esplanade boardwalk, work up an appetite, and reward yourself with serious Southern barbecue for lunch. Pick up steak, salad greens, and fresh bread at the farmers' market, then head up to the roof deck to grill your feast. All mere steps from your sofa.



Introducing RiverSky - by Bosa Properties

RiverSky by Bosa Properties



CONTACT US
604.522.2583
riversky@bosaproperties.com

SOCIAL
f e u

Open Daily 12-5PM
659 Columbia Street
New Westminster

BOSA
PROPERTIES



AT HOME IN THE SKY, WATCHING THE WORLD AT YOUR WINDOWS.

SCROLL

FLOORPLANS

Homes are designed with large and abundant windows, maximizing natural light. Kitchens have generous counter and storage space, and one bedroom BOSA SPACE™ plans invite you to live life larger at home.



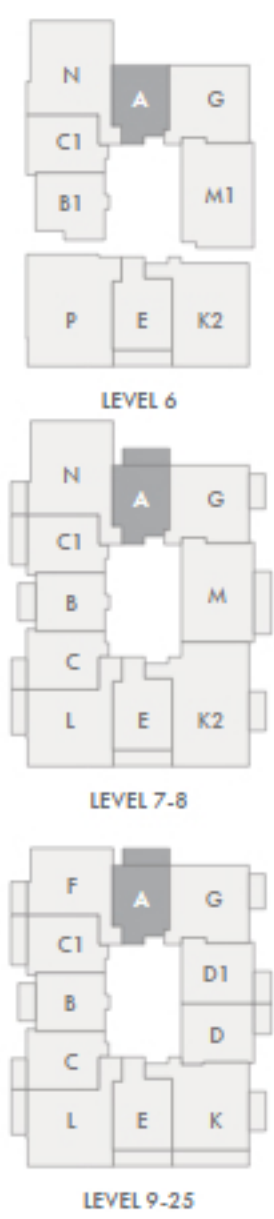
PLAN A

1 BR

LIVING 523 SF
BALCONY 93 SF
TOTAL 616 SF

Locate on tower

Download PDF



Click the floorplan to enlarge.



SELECT A PLAN

1 BR

A

B

C

C1

D1

2 BR

SKY COLLECTION

VIEWS

Homes start on the sixth floor and reach for the sky, opening to stunning views: fishing boats, pleasure craft, and wildlife on the river. The shimmer of city lights. Snowcapped peaks rising up behind architecturally stunning bridges.



FLOOR

28

27

26

24

22

20

18

16

14

12

10



W · · · NW · · · N · · · NE · · · E · · · SE · · · S · · · SW · · · W

CONTACT US

604.522.2583
riversky@bosaproperties.com

SOCIAL



Open Daily 12-5PM
659 Columbia Street
New Westminster



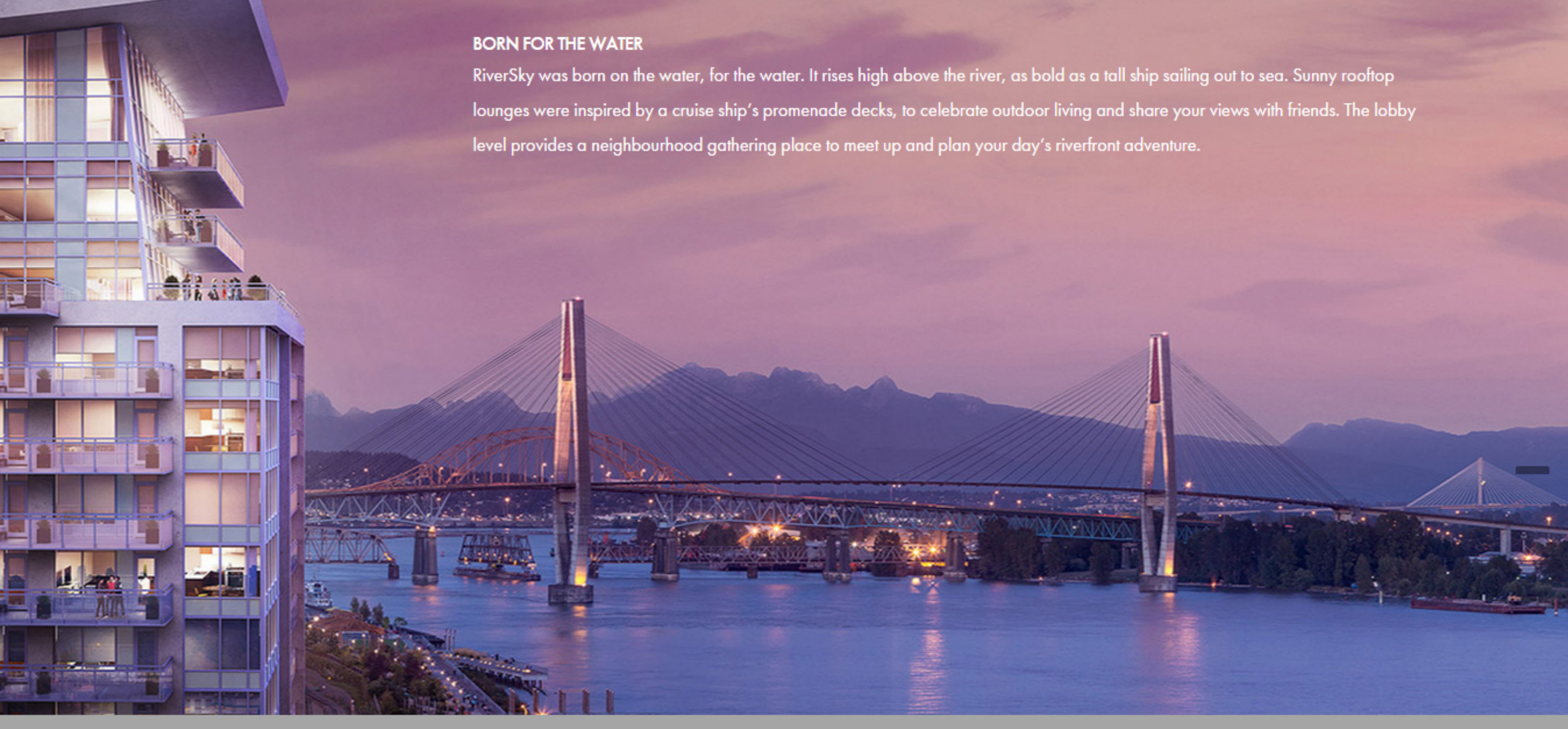
CONNECTING RIVER WITH SKY AND PEOPLE WITH PLACE.

RiverSky was created to enhance New Westminster's waterfront, providing a connective element and animated community hub linking Quayside Boulevard with the Fraser River. The pair of sleek towers are joined by landscaped outdoor patios at the sixth floor roof, and the intriguing lobby level faces the street like a ship's prow. RiverSky's contemporary lines, elegant stature, and viewing decks turn heads when seen from either land or water.



BORN FOR THE WATER

RiverSky was born on the water, for the water. It rises high above the river, as bold as a tall ship sailing out to sea. Sunny rooftop lounges were inspired by a cruise ship's promenade decks, to celebrate outdoor living and share your views with friends. The lobby level provides a neighbourhood gathering place to meet up and plan your day's riverfront adventure.



ON TOP OF THE WORLD

RiverSky's 2000-square-foot gym has views to make every workout breathtaking. The rooftop social spaces include an indoor party room and fireside entertainment lounge. With a bar, full kitchen, and large screen, life is about mini film festival weekends and game nights done right. When your social life is in the sky, every seat has an amazing view.

ROOFTOP PATIOS

Three separate outdoor lounges offer the sun-soaked space you crave for chilling out after work and living it up on weekends. Your landscaped arbour and benches create a relaxing garden space. The barbecue pit gathers friends and neighbours to grill up a feast and a promenade deck provides the ultimate sun spot for watching life on the river.



SHOPPING MEWS

At lobby level, retail shops and an open breezeway create a community hub that connects Quayside Boulevard with the Esplanade boardwalk. It's the gathering place on the river, where you'll meet up with friends before checking out the farmers' market or deciding where to go for lunch.



CONCIERGE

A full-time concierge will welcome you home, assist with your packages, and helps you book the amenity spaces.

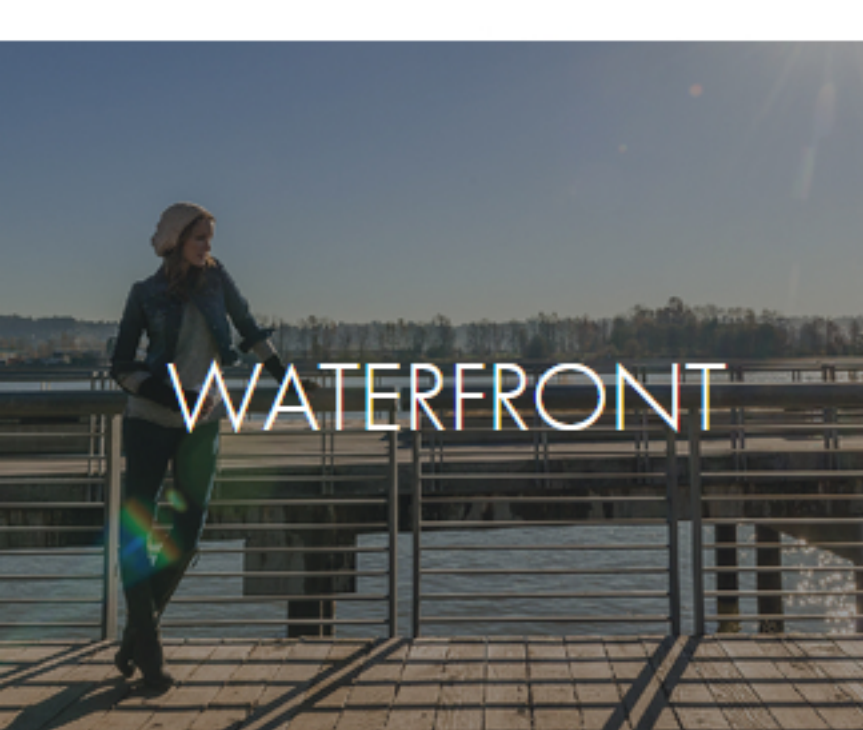


BOSA FRESH

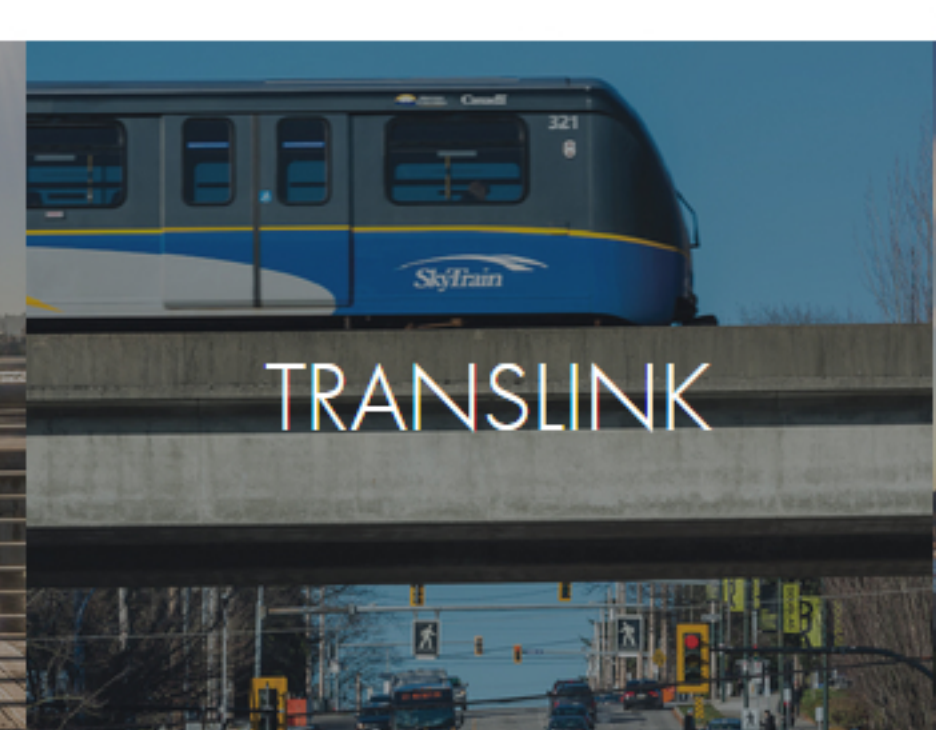
A purpose-built facility at lobby level, temperature controlled and secure, so your grocery deliveries can keep their cool until you get home.

BOSA VOLT

Dedicated parking spaces provide electric vehicles with the power to recharge batteries, making it easier for condo owners to go green. In every new Bosa building.



WATERFRONT



TRANSLINK



VALUE



BOSA QUALITY

At your front door is the Fraser River and Esplanade boardwalk. Admire sunset reflected in the water and watch boats sailing out to sea whenever you walk the dog or pop out for groceries.



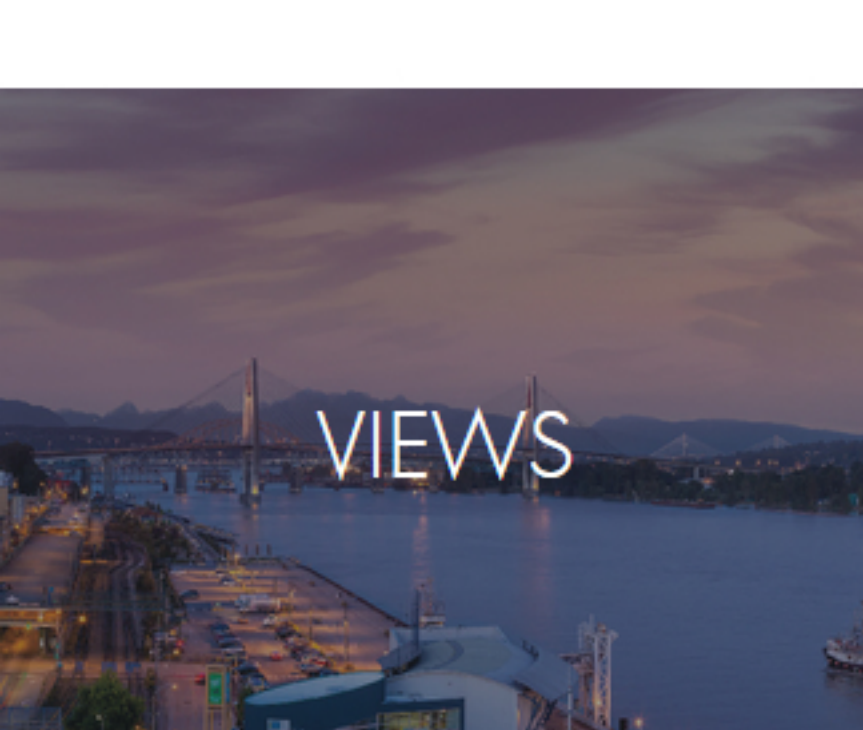
SkyTrain is only steps from your door, for quick and easy connections to wherever you need to go. Read, relax, or send a few emails as you ride to Vancouver in 15 minutes or Metrotown in 10.



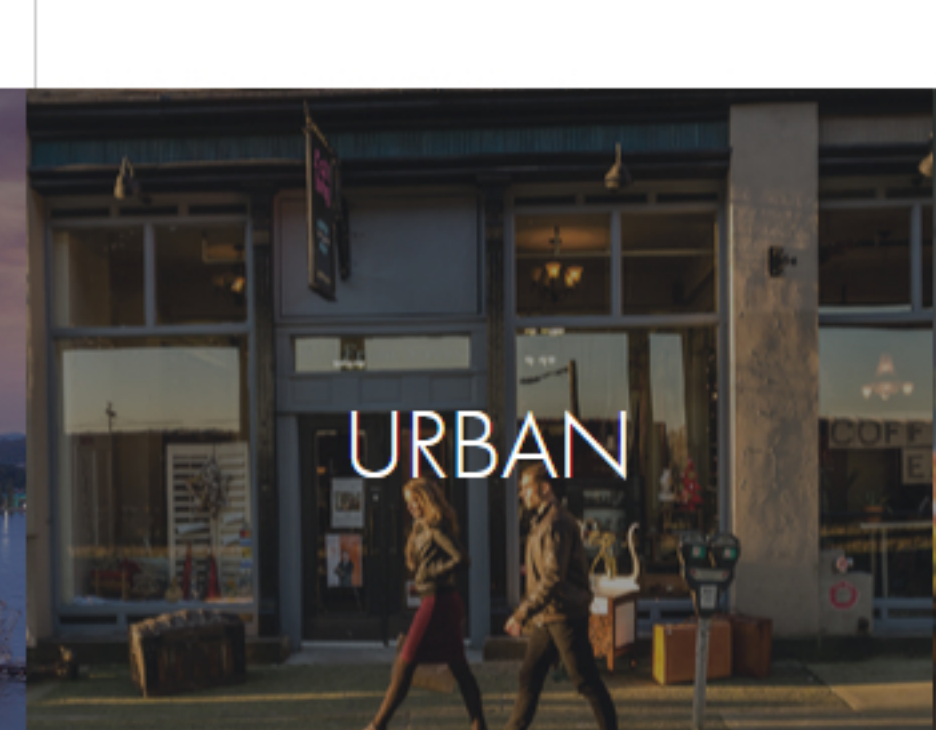
This is unbeatable value. Waterfront living is always a strong resale benefit, and RiverSky is significantly more affordable than waterfront in other Metro Vancouver communities.



With more than 50 years of developing Metro Vancouver's most successful communities, the Bosa name is known for exceptional design, quality construction, and enduring value.



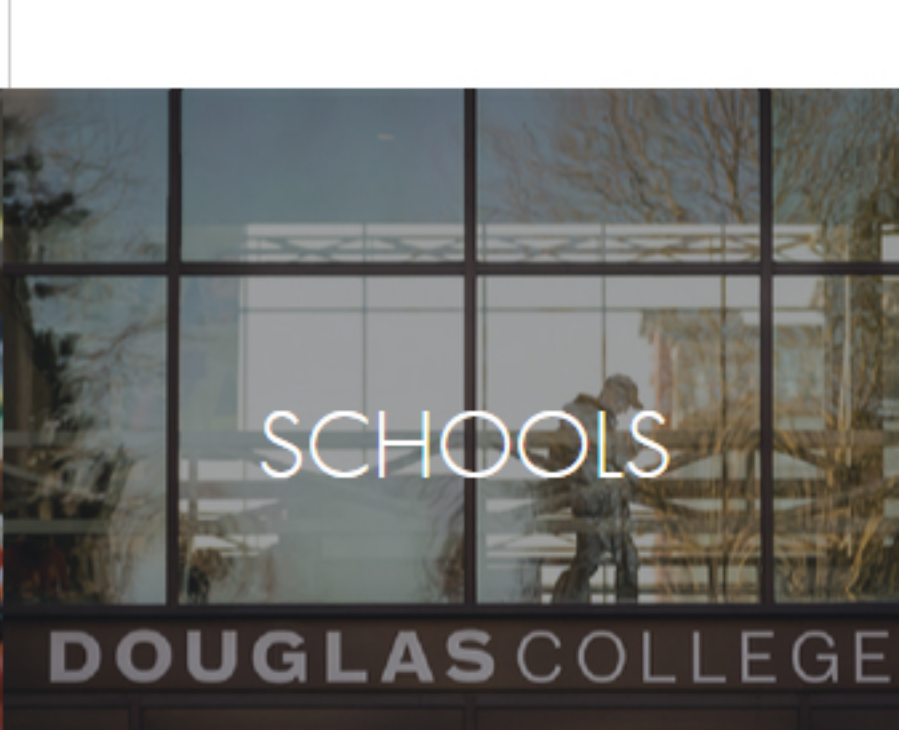
VIEWS



URBAN



GROCERIES



SCHOOLS

At your window is the ever-changing sky. Sunrise and sunset splash colour on the river as fishing boats head to and from the sea. Majestic mountains and dramatic bridges frame your views and at dusk, the shimmer of city lights surrounds you.



Live by the urban comforts of great restaurants and shops. Visit Longtail Kitchen for Thai comfort food or The Boathouse for a steak and seafood feast with water views. Shop Brick and Mortar Living for stylish home accessories, cool vintage finds, and unique gifts.



Next door at River Market, Donald's Market is your daily go-to for fresh produce, meat, cheese, and pantry items. The winter farmer's market brings local vegetables, beef, poultry, seafoods, and baked goods to your front door every other Saturday.



One of BC's largest public colleges, Douglas College is known for Bachelor's degree programs and its Continuing Education. Their focus is on university arts and science courses, as well as career programs in health care, business, and the creative arts.



SITE PLAN



CONTACT US
604.522.2583
riversky@bosaproPERTIES.com

SOCIAL
f t i

Open Daily 12-5PM
659 Columbia Street
New Westminster

BOSA PROPERTIES



AT HOME IN THE SKY, WATCHING THE WORLD AT YOUR WINDOWS.

SEE BOSASPACE

LIFE IN THE SKY

Homes start at the sixth floor and rise into the sky, opening to wide open balconies and uninterrupted views of the Fraser River, dramatic bridges, snow-capped mountains, and surrounding city lights. Interiors are spacious and filled with light, thanks to thoughtful placement of windows that bring the sky inside.

BOSA SPACE™

EXPONENTIAL LIVING SYSTEMS

BosaSPACE™ responsive floorplans respond to the rhythms of your life, with ExtenTABLE™ transforming your kitchen island into a long table that comfortably seats 8 for dinner, and a SleepTHEATRE™ that conceals a daybed-sofa/guest bed behind your TV. Available in select one-bedroom homes.



EVERYDAY COMFORT

A spacious, comfortable living room and entertainment lounge, plus plenty of counter space for prepping. In this mode, ExtenTABLE™ is set for 2 and does double-duty as a desk for catching up on work.



10AM Everyday Comfort. ExtenTABLE™ is set for 2, SleepTHEATRE™ TV in entertainment mode.



DETAILS

Flexible design adapts to your life. The kitchen prep station slides out to a long table for big dinners. The TV reveals an extra sofa or bed for an overnight guest.

"The air moves like a river and carries the clouds with it; just as running water carries all the things that float upon it."

— Leonardo DaVinci



BED & BATH master bedrooms are equipped with his 'n' her closets to make life run smoothly. Shelving is concealed behind the sliding vanity mirror, keeping all your personal products out of sight. Marble countertops and large-format porcelain tiles put extra beauty in your routine.



KITCHENS are modern and functional, with lots of storage and generous counter space, quartz countertops, undermount sinks, and integrated and stainless steel appliances create a sleek, stylish look. An optional innovative StoreMORE™ pantry hides a pull-down ironing board and storage, along with a wine rack and stemware shelving.



SPECIFICATIONS

UPSCALE DETAILS

- Choice of three contemporary designer colour palettes: River, Sky, or Metro
- Discrete and stylish blinds throughout
- Durable and stylish seamless engineered flooring throughout living room and bedroom(s)
- Expansive windows, two-tone framed (white interior with silver exterior)

LUXURY AMENITIES

- RiverSky Club
- Private and spacious facility
- Fully equipped training gym
- Tranquil yoga studio
- Fireside entertainment lounge with full kitchen, soft seating, and large-screen TV. Rooftop patio and terrace overlooking magnificent water views—featuring spectacular deck with chaise lounges, fire pit, harvest table, and BBQ area
- Seating areas in expansive green-space courtyard
- 9,000 square feet of retail shops and services
- Dramatic two-story entrance lobby with fireplace
- Concierge for your convenience and peace of mind
- Private and secure mailroom in entrance lobby
- BosaFRESH™ room—a purpose-built facility at lobby level, temperature controlled and secure for at-home grocery deliveries
- Spacious board room/flexible meeting space (Tower 2)
- Convenient pet wash and grooming station (Tower 2)
- BosaVOL™—dedicated parking spaces provide electric vehicles with the power to recharge batteries

SAFE, SECURE, AND SUSTAINABLE

- Heavy-duty solid brass deadbolt lock and viewer on suite entry door
- Homes include a discharge, heat recovery ventilator (HRV). HRVs introduce fresh air into every room of the home by recovering heat from outgoing air, providing added comfort and energy-efficiency for your home
- Hard-wired smoke detectors
- Energy-efficient, double-glazed windows and glass doors with thermally broken two-tone aluminum frames
- Two personally coded entry devices for access to entry lobby, elevators, and individual residential floors
- Private bicycle storage rooms
- Entry phone outside main lobby has security camera, allowing prescreening of visitors on TV
- Well-lit pedestrian walkways in outdoor common areas
- Secure parkade
- Home warranty coverage for:
 - 2-year materials and labour warranty
 - 5-year building envelope warranty
 - 10-year structural warranty
- Bosa Properties Customer Care Warranty included with every home

NO DETAIL TOO SMALL

- USB wall plug-in for kitchen or work space to charge your cell phone
- Prepared for high-speed Internet access and digital cable entertainment channels
- Contemporary laminate millwork wardrobes in most bedrooms
- Laundry closet with front-loading stacking washer and dryer
- Laundry closet with convenient overhead lighting

ELEVATED COOKING

- Contemporary wood-grain finish on upper cabinets, kitchen islands (select homes), and backplash
- Modern matte white lacquered lower cabinets
- Premium soft-close doors and retractable drawer-slide mechanisms
- Stylish task lighting
- USB charging plug in all kitchens/workstations
- Solid brass Hansgrohe™ kitchen faucet in polished chrome with integral pullout spray
- Euro-inspired designer composite stone countertops
- Undermount 18-gauge stainless steel sink
- StoreMORE™ kitchen pantry option includes wine rack, stemware holder, ironing board, and storage (select homes)
- Premium appliance package including:
 - Euro-style 24" integrated refrigerator with bottom freezer
 - Euro-style 24" gas cooktop
 - Premium slide-out hood fan
 - Euro-style convection wall oven with 8 cooking functions
 - Sleek dishwasher with integrated door panel
 - Stainless steel microwave in select homes

LAVISH BATH

- Master ensuite features a luxurious soaker tub with integral shower
- Custom medicine cabinet with fixed shelf and sliding mirror
- Composite stone countertops
- Vitreous china square enamel sink
- Solid-brass Grohe™ single-lever faucet
- Contemporary polished chrome shower/tub filler with three-jet showerhead by Grohe™
- Handset porcelain tile flooring
- Recessed lighting above water closet and tub/shower
- Ground fault circuit interrupter plugs at all vanities
- Dual-flush water closet
- Polished chrome towel bars and paper holders
- Contemporary wood-grain cabinets with storage drawer

BOSASPACE™: LIVING SPACE REINVENTED

Homes at RiverSky change form and function to meet the daily rhythms of your life, providing you with added flexibility and value in your home.

BosaSPACE™ interior furnishings are available in one-bedroom homes and include:

- The ExtenTABLE™ dining and worktable—your spacious kitchen for 2 transforms to a large dining area in 5 minutes. The ExtenTABLE™ slides out to comfortably seat 6 to 8 guests
- The SleepTHEATRE™ with integral storage and floating TV panel. The SleepTHEATRE™ slides to reveal extra space—a sofa for guests or a spare bed for an overnight guest

Download Specification Sheet PDF