



IF TIMING IS EVERYTHING, NOW IS THE TIME.

1, 2 AND 3 BEDROOM HOMES STARTING FROM THE \$260,000s
GRAND OPENING CELEBRATION FEBRUARY 7-8, 2015 **REGISTER TODAY »**

CROWN IS AN EXCITING NEW CHAPTER FOR BURQUITLAM.

Delivering the most spacious and livable concrete condominium homes.

Crown by Beedie Living is one of the first opportunities to own a spacious and livable concrete condominium home in the heart of West Coquitlam. Ideally located on a residential tree-lined street, but within steps of an emerging urban centre and future SkyTrain station, Crown is an exceptional opportunity to own in the right place at the right time.

Rising 26 storeys, Crown's stunning views, exquisite finishings and impressive West Coast architecture will make it hard to leave but easy to come home to. Crown is an ideal purchase for those who understand the enduring value of the perfect address in a neighbourhood poised for growth.

One bedrooms from the \$260,000s
Two bedrooms from the \$390,000s
Three bedrooms from the \$500,000s

CONNECT WITH BEEDIE LIVING

FACEBOOK

Beedie Living
16 hours ago

It's an exciting weekend! Join us and MAC Marketing Solutions at Crown! We've sold more than 20 homes in the last three weeks.

Join us this weekend to celebrate the Grand Opening of Crown:

WHAT

Crown Display Suite Tours
On site Barista plus Canapés & Desserts

WHEN

Saturday, February 7 & Sunday, February 8, 2015
From 12 pm to 5 pm

WHERE

Crown Presentation Centre
#104 - 552 Clarke Road, Coquitlam B.C.
(In Burquitlam Plaza, next to Shoppers Drug Mart)

Developed by Beedie Living
Sales & Marketing by MAC Marketing Solutions – at #104 - 552 Clarke Road, Coquitlam B.C.

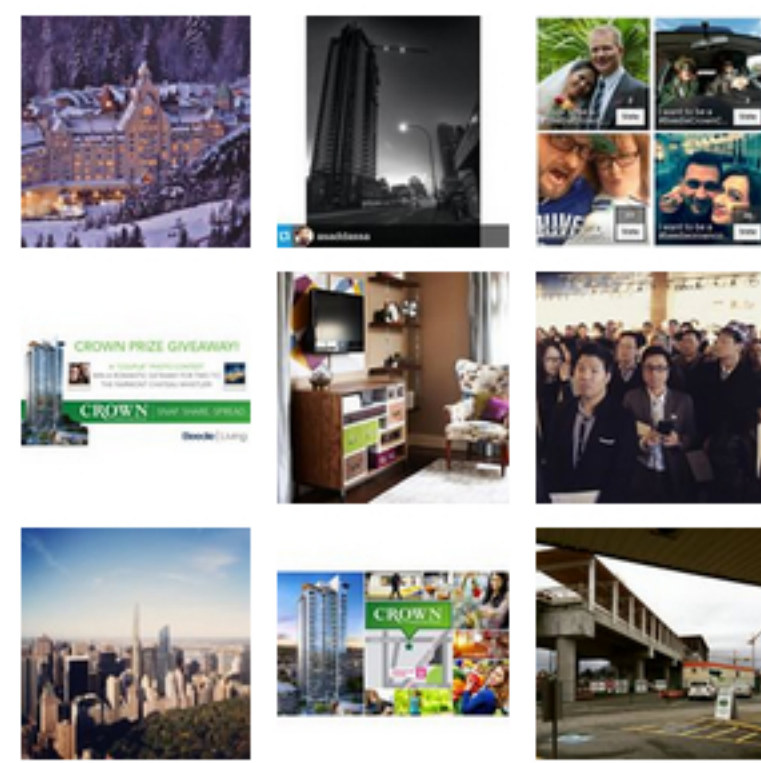
TWITTER

RT @MAC_Marketing: Come join the Crown by @BeedieLiving sales team this weekend to celebrate our Grand Opening! <http://t.co/LoSCST6Wdq> http...

FREE stay at @FairmontWhistlr! Enter our fun & easy photo #contest: <http://t.co/SZrf4rryB6>. Be a #BeedieCrownCouple & win our \$1,500 #prize!

INSTAGRAM

@BEEDIELIVING
Creating homes to be proud of is what Beedie Living is all about.



Follow on Instagram

REGISTER NOW »



WEST COQUITLAM'S NEXT ICONIC HIGH RISE

Crown is a stunning 26-storey West Coast contemporary high-rise proudly designed by award-winning Chris Dikeakos Architects. Featuring elegant glass work, cedar-inspired soffits, stone cladding and a grand double-height lobby – Crown immediately captures your attention.

Residents will enjoy an arrival like no other. The welcoming entry court is richly designed with lush landscaping, outdoor lighting and a calming water feature. Through the glass entry doors, custom wood paneling, a cozy fireplace and fully-furnished waiting areas will remind you of staying at a beautiful hotel.

REGISTER NOW »

CROWN

AT BURQUITLAM STATION

604-939-8868 | info@crownbybeedie.ca

HOME

REGISTER

CONTACT US

NEWS

NEWS

BLOG

NEIGHBOURHOOD

NEIGHBOURHOOD
MAP

TEAM

DEVELOPER
CONSULTANTS

BUILDING

ARCHITECTURE
INTERIORS
FLOORPLANS
FEATURES
VIEWS
AMENITIES

Beedie | Living



*This is not an offering for sale. Sale can only be made by disclosure statement. Renderings are an artist's conception and are intended as general reference only. Sales and marketing provided by MAC Marketing Solutions. E.&O.E.





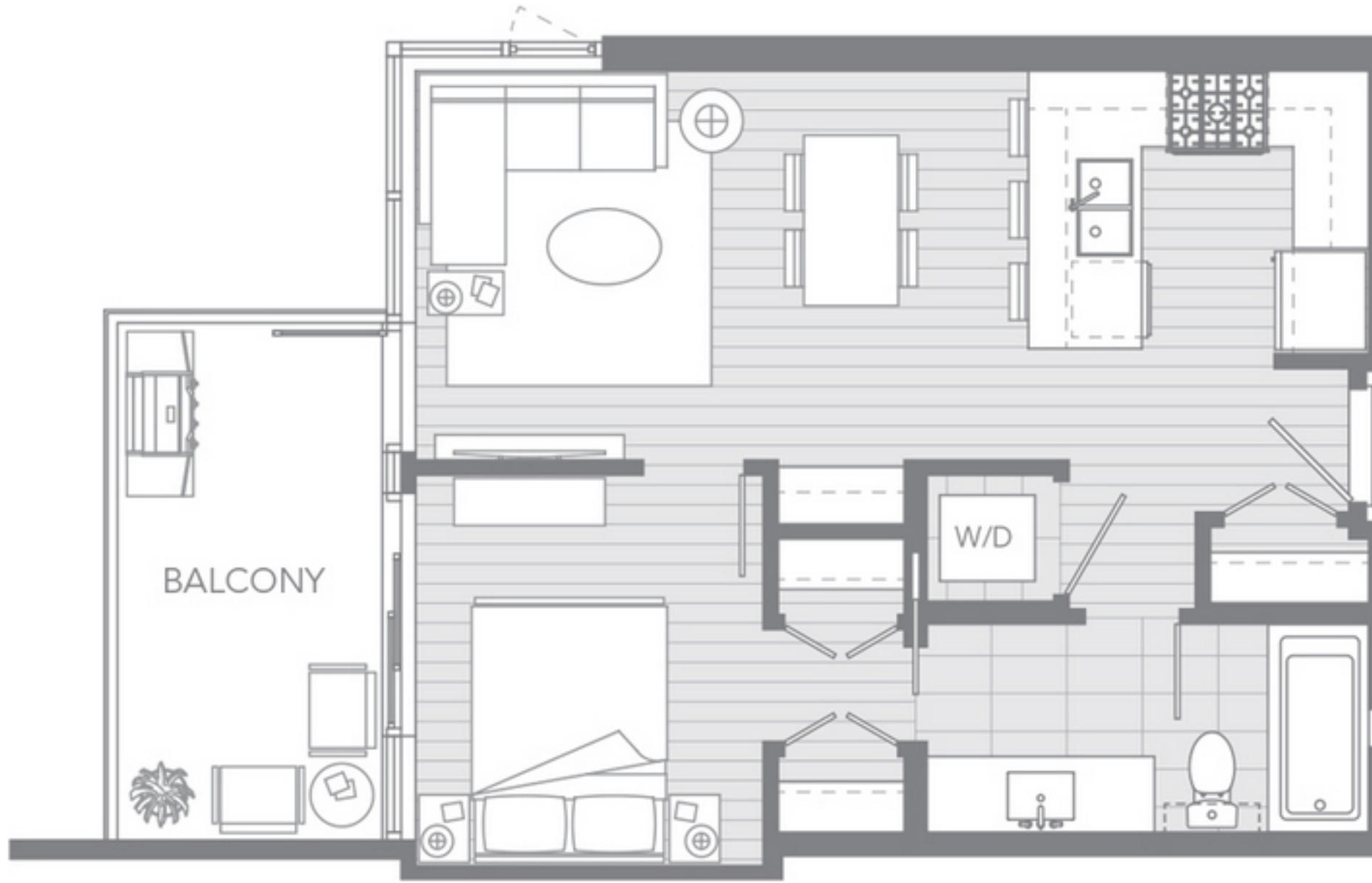
INTERIORS IN PERFECT BALANCE

Inside every home is a unique balance of traditional and contemporary design. Clean lines bathed in natural light create an elegant and enduring style. The interior of each home has been designed to maximize every inch, creating a spacious and highly livable home.

Your modern, open kitchen is built for gourmet cooking and unlimited entertaining. The premium full-size stainless steel appliances will impress even the most discerning chef, while the quartz countertops and marble backsplash are a constant reminder that you're living in style.

Master suite bathrooms are built for pure relaxation and filled with smart functional design cues. Quartzite countertops and porcelain floor tile accentuates the luxurious feel as you begin to notice thoughtful touches like the over-height shower doors, marble accented shower niche and custom shelving.

REGISTER NOW »



PLAN A
1 BED | 1 BATH

INTERIOR: 560 - 567 SQ FT
EXTERIOR: 102 SQ FT

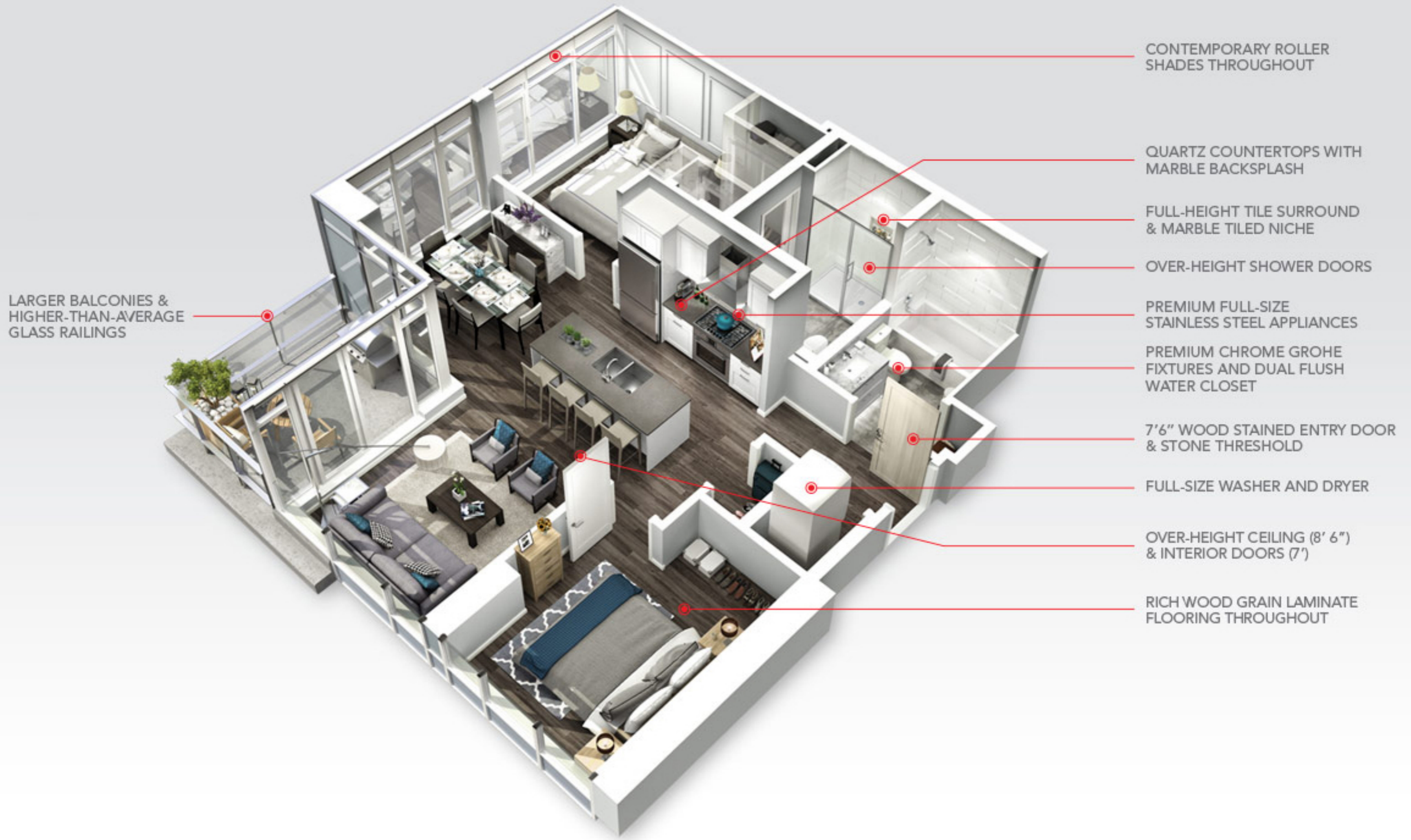


Dimensions, square footage, specifications, layouts and materials are approximate only and are subject to change without notice. Final dimensions, square footage and floorplans may vary and will be determined by final strata plan measurements. The developer reserves the right to make changes without notice. E. & O.E.

[DOWNLOAD INDIVIDUAL PLAN »](#)

[DOWNLOAD ALL THE PLANS »](#)

REGISTER NOW »



BEEDIE BY DESIGN™

At Beedie Living it's our priority to go above and beyond. Meeting expectations is simply not enough. We are here to set new standards through intelligent design and meticulous attention to detail.

- **SPACIOUS HOMES**
with full dining and living areas, 8'6" ceilings, over-height doors and expansive balconies with higher-than-average glass railings
- **GREAT KITCHENS**
with full-size stainless steel appliances, stone countertops, marble backsplash and plenty of cabinet space
- **PREMIUM FEATURES**
such as Grohe fixtures, full-size washer & dryer, over-height shower doors, and contemporary roller shades
- **THOUGHTFUL DETAILS**
such as rich wood grain laminate flooring throughout, marble tiled niche in ensuite along with custom shelves

[DOWNLOAD THE FEATURE SHEET »](#)

[REGISTER NOW »](#)



BREATHTAKING VIEWS FROM EVERY ANGLE

The unobstructed views of Burnaby Mountain, the North Shore Mountains and the Coquitlam cityscape are nothing short of spectacular.

This beautiful neighbourhood of single-family homes to the north and low-rise communities to the west will ensure years of breathtaking views from your new home.

Sit back on your balcony and watch the seasons change or spend your time pinpointing every mountain hike you'd love to do. No matter how you choose to enjoy them, these gorgeous views are something you will appreciate every single day.

CROWN
AT BURQUITLAM STATION

604-939-8868 | info@crownbybeedie.ca

[HOME](#)

[REGISTER](#)

[CONTACT US](#)

[NEWS](#)

[NEWS
BLOG](#)

[NEIGHBOURHOOD](#) | [BUILDING](#)

[NEIGHBOURHOOD
MAP](#)

[TEAM](#)

[DEVELOPER
CONSULTANTS](#)

[ARCHITECTURE](#)
[INTERIORS](#)
[FLOORPLANS](#)
[FEATURES](#)
[VIEWS](#)
[AMENITIES](#)

Beedie | Living



*This is not an offering for sale. Sale can only be made by disclosure statement. Renderings are an artist's conception and are intended as general reference only. Sales and marketing provided by MAC Marketing Solutions. E.&O.E.



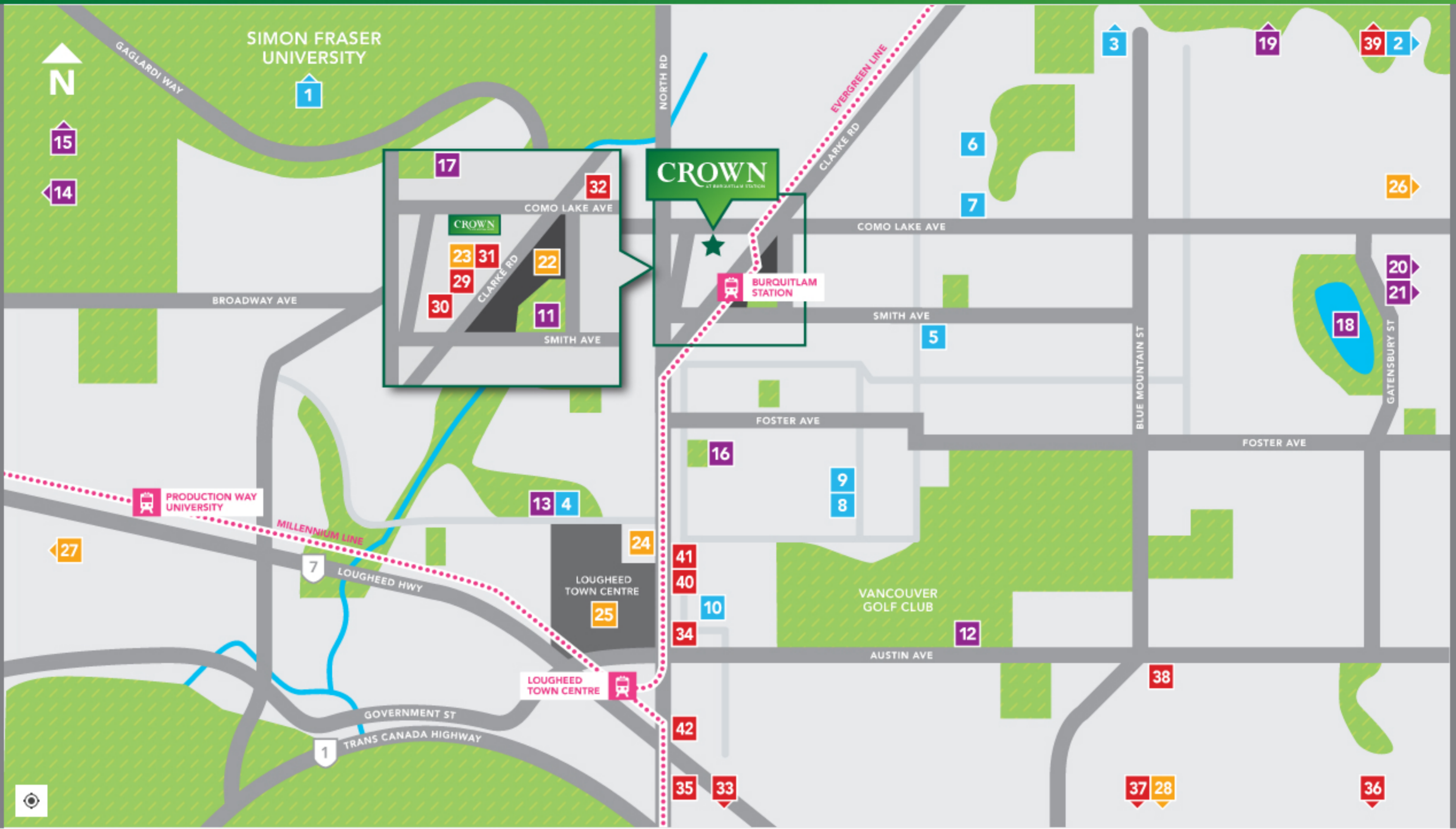


AMENITIES TO FIT YOUR LIFESTYLE

For Crown to be a truly special place to live there needs to be a vibrant community within it. That is why careful consideration has been put into the design of all of the amenities. With over 3,500 sq. ft. of amenity space inside and over 2,400 sq. ft. outside, there's something for everyone.

- Welcoming circular entry court, lush landscaping and impressive water feature
- Grand double height lobby, expansive fireplace and rich leather furnishings
- Entertainment room with kitchen, dining areas and fireside lounge with flat screen TV
- Games room with foosball tables, TV and comfortable seating
- Fitness centre with cardio area, weights, and yoga studio
- Expansive outdoor terrace features BBQ and dining area, outdoor lounge spaces with fireplace and water feature
- Beautifully landscaped courtyards
- Children's play area
- Fully-furnished guest suite with kitchenette and bathroom

REGISTER NOW »



TRANSPORTATION

- Evergreen Line
- Millennium Line

SCHOOLS & LIBRARIES

- 1 Simon Fraser University
- 2 Douglas College
- 3 Port Moody Secondary
- 4 Burnaby Public Library
- 5 Mountain View Elementary School
- 6 Miller Park Community School
- 7 École Banting Middle School
- 8 Roy Stibbs Elementary School
- 9 Future Kids Daycare Centre
- 10 Coquitlam College

RECREATION & PARKS

- 11 Burquitlam Park
- 12 Vancouver Golf Club
- 13 Cameron Park & Recreation Complex
- 14 Burnaby Mountain Golf Course
- 15 Burnaby Mountain Park
- 16 Burquitlam Community Garden Park
- 17 Oakdale Park
- 18 Como Lake
- 19 Burrard Inlet
- 20 Porlier Community Centre
- 21 Mundy Park

SHOPS & SERVICES

- 22 Burquitlam Plaza
 - Future 50,000 sq. ft. Grocery Store
 - Shoppers Drug Mart
 - M&M Meat Shops
 - Care Point Medical Centre
 - UPS Store
 - CIBC Branch
 - Bosley's Pet Food Plus
- 23 Kinetik Cycles
- 24 Northgate Village
 - PriceSmart Foods
 - BC Liquor Store
 - Tim Horton's
- 25 Lougheed Town Centre
 - The Bay
 - Safeway
 - London Drugs
 - Walmart
 - SportCheck
 - Starbucks
- 26 Como Lake Village
 - No Frills
 - TD Bank
 - Dollar Store
- 27 Costco Burnaby
- 28 IKEA

DINING

- 29 Rhino's Pub
- 30 MacDonald's
- 31 555 Clarke Road
 - Hanano Sushi & Grill
 - C-Lovers Fish & Chips
 - Thai Garden
 - Spicy House
- 32 602 Clarke Road
 - Bella Pizza
 - KFC
 - Subway
 - Seok Gi Si Dae Korean BBQ
- 33 Joey Coquitlam
- 34 Sushi California
- 35 Wings
- 36 Cactus Club
- 37 Boston Pizza
- 38 John B. Pub
- 39 The Boat House
- 40 Cumpari's Gelato E Caffè
- 41 Papa John's Pizza
- 42 Pho 99

[DOWNLOAD THE AREA MAP »](#)

[REGISTER NOW »](#)



604-939-8868 | info@crownbybeedie.ca

- HOME
- REGISTER
- CONTACT US
- NEWS
- NEWS BLOG

- NEIGHBOURHOOD
- NEIGHBOURHOOD MAP
- TEAM
- DEVELOPER CONSULTANTS
- BUILDING
- ARCHITECTURE
- INTERIORS
- FLOORPLANS
- FEATURES
- VIEWS
- AMENITIES

Beedie | Living



*This is not an offering for sale. Sale can only be made by disclosure statement. Renderings are an artist's conception and are intended as general reference only. Sales and marketing provided by MAC Marketing Solutions. E.&O.E.

A TEAM 60 YEARS IN THE MAKING.

Throughout Beedie's 60 years in the business, they have developed strong and trusted relationships with many brilliant and highly-skilled professionals. The expert team of visionary thinkers, suppliers and tradespeople that work with Beedie Living share the commitment of designing and building exceptional, quality homes.

Beedie Living is most proud of its collective ability to execute everything with the utmost care and attention to detail. This allows the Beedie Living team to not only exceed their own high expectations, but most importantly, your expectations as the homeowner.



BEEDIE LIVING »



CONSULTANTS »

REGISTER NOW »

STAY UP TO DATE WITH THE LATEST FROM BEEDIE LIVING



[NEWS »](#)



[BLOG »](#)

[REGISTER NOW »](#)



CROWN PRESENTATION CENTRE

Burquitlam Plaza
#104 - 552 Clarke Rd. Coquitlam BC

Open 12-5pm daily, except Fridays
604-939-8868
info@crownbybeedie.ca

[CLICK TO SEE IN GOOGLE MAPS »](#)

REGISTER NOW »

CROWN

AT BURQUITLAM STATION

604-939-8868 | info@crownbybeedie.ca

[HOME](#)

[REGISTER](#)

[CONTACT US](#)

[NEWS](#)

[NEWS](#)
[BLOG](#)

[NEIGHBOURHOOD](#)

[NEIGHBOURHOOD](#)
[MAP](#)

[TEAM](#)

[DEVELOPER](#)
[CONSULTANTS](#)

[BUILDING](#)

[ARCHITECTURE](#)
[INTERIORS](#)
[FLOORPLANS](#)
[FEATURES](#)
[VIEWS](#)
[AMENITIES](#)

Beedie | Living



*This is not an offering for sale. Sale can only be made by disclosure statement. Renderings are an artist's conception and are intended as general reference only. Sales and marketing provided by MAC Marketing Solutions. E.&O.E.

