



UP in Value

Studies report that condos located near SkyTrain stations demonstrate significant increases in resale value.

THE UPSHOT

Uptown2 is coming soon and will offer more to love.

Leave your details to receive the latest UPdates.

How did you hear about Uptown2?*

Family Status?

Are you a Realtor?*

Yes No

Become a Bosa Insider?*

Yes No

By selecting "Yes", you consent to Bosa Properties Inc. and BlueSky Properties Inc. and their respective current and future affiliates and subsidiaries contacting you regarding their current and future products and services, event invitations, newsletters, announcements, promotions, incentives, and other publications. Rest assured that none of this information is sold or distributed to any other parties. You may withdraw consent at any time.

Uptown2 is developed by Bosa Properties (Uptown) Inc. Renderings, sketches, layouts and finishes are representational only. This is not an offering for sale. Prices subject to change without notice. E.&O.E.

SUBMIT

Uptown's first landmark tower got snapped up quickly, loved for its upscale features and desirable location. Next up is Uptown2, with more to love at the heart of Metro Vancouver's next great neighbourhood. Luxury amenities, spectacular views, ground floor grocery, parks, and shopping—mere steps from the Evergreen line.

PRICED FROM \$276,900

1, 1 + Den, 2 and 3 bed
homes available

**EARLY
BUYER
BONUS**

**\$4000 off 1 bedrooms
\$7000 off 2 bedrooms
for the first 100 homes***



Elements of a Great Urban Village



Throughout the world, successful urban villages have a few things in common. Bosa Properties has a history of creating these well-loved communities; examples are Miramar Village in sunny White Rock, Highgate Village in Burnaby, and Coquitlam's Westwood Village. What's up now for Bosa? The Uptown towers: Metro Vancouver's next great urban village.



Shop

Lougheed Town Centre is only minutes by car or SkyTrain, or a 25-minute walk. Your go-to for everything from groceries to gadgets, shoes to shiatsu, with H&M, the Bay, Walmart, Tommy Hilfiger and more.



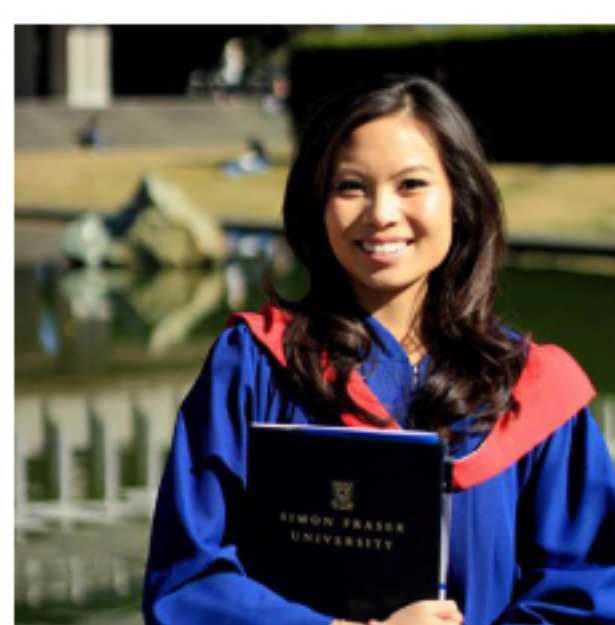
Nourish

A neighbourhood market and barista bar are at the base of the Uptown towers. Craving Korean BBQ? Some of Metro Vancouver's best kept secrets are nearby at Lougheed and North Road.



Go!

Burquitlam Station is a mere half block from Uptown, and SkyTrain will get you to downtown Vancouver, YVR, Metrotown, or Surrey City Centre in minutes.



Learn

Within an 8-minute drive, Simon Fraser University is one of the most respected universities in the country. Douglas College and BCIT are also a short drive away.



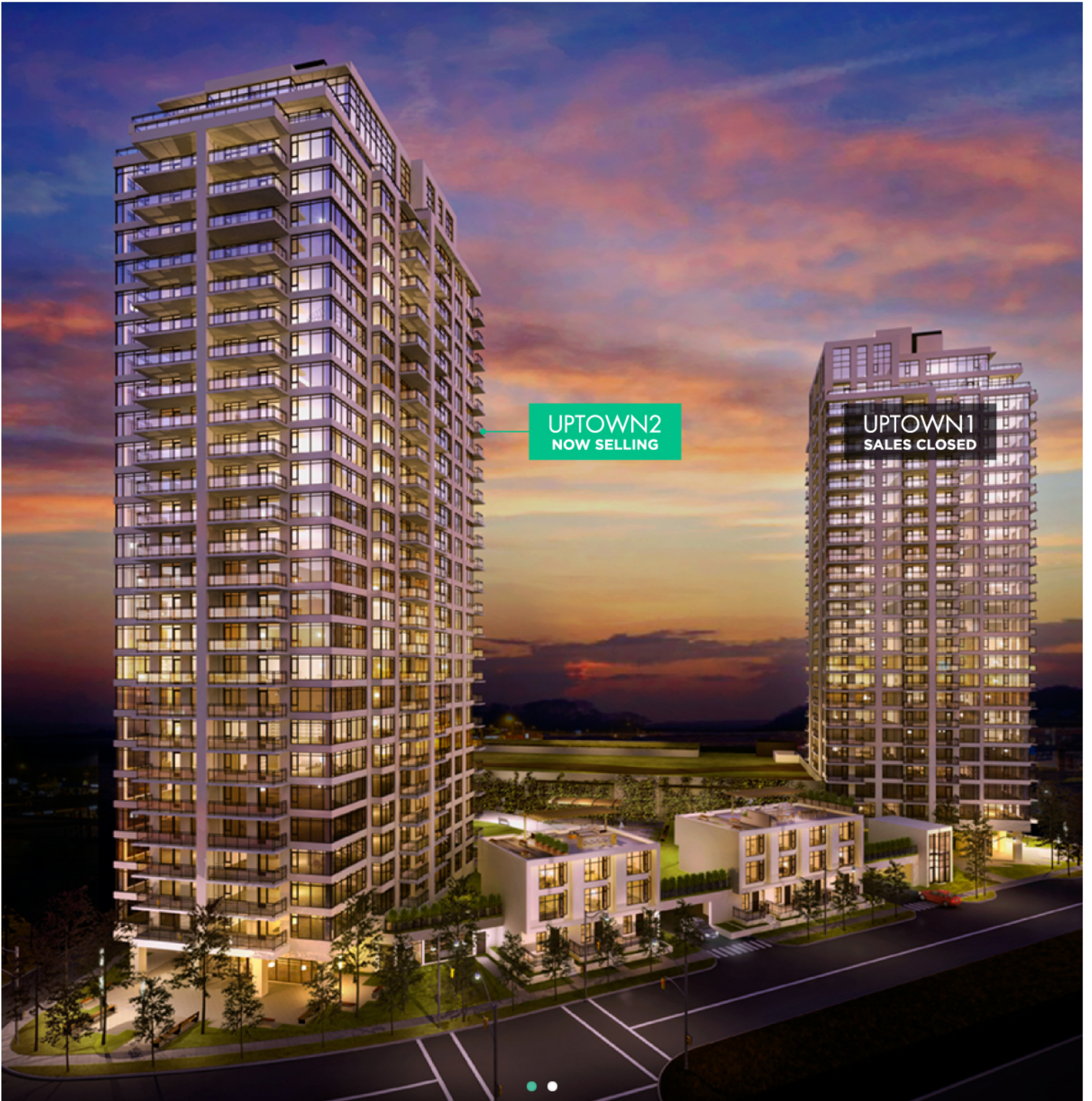
Play

Burquitlam Park basically next door and Vancouver Golf Club is 4 minutes away. Como Lake is about a 7-minute drive, and the hiking and biking trails of Burnaby Mountain are within 10 minutes.



Trending Upward

Two elegant towers rise from the centre of an up-and-coming community, centrally located and transit-friendly. Created by the respected Bosa Properties team, Uptown is the high point of this neighbourhood on the rise.



Upscale Arrival

Come Home to High Style

A large, clear-view fireplace and custom-designed chandelier suspended from the double-height ceiling. A concierge to receive packages and greet your guests. First impressions count for a lot.



Work + Play

Find your balance at Uptown. Embrace a healthy lifestyle in the fitness room, yoga studio, infrared sauna, and steamroom. Then unwind with friends or cheer for your team in the entertainment lounge.



Work UP a Sweat Party it UP

Work + Play in your 2,315 sq.ft. Private Wellness Pavilion

Live with balance. Adopt a healthy routine in Uptown's fitness room, yoga studio, infrared sauna, and steamroom. Then unwind or get social in the entertainment lounge. Live it UP.



Shopping + Restaurants

A major-chain grocer is at the base of the Uptown towers and Lougheed Town Centre is only minutes by car or SkyTrain, or a 25-minute walk. Craving Korean BBQ? Some of Metro Vancouver's best kept secrets are nearby at Lougheed and North Road.



Power it UP

Park your electric car in a parking stall supplied with a charging station—your battery will always be charged and ready to go. BosaVOLT™ is a first in North America and just another example of Bosa's progressive thinking.

