

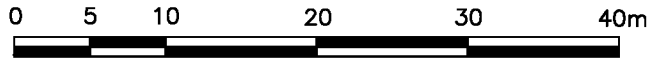
**STRATA PLAN OF LOT 1, BLOCK 298,  
DISTRICT LOT 526, GROUP 1,  
NEW WESTMINSTER DISTRICT,  
PLAN EPP36220**

SHEET 1 OF 9 SHEETS

**STRATA PLAN EPS1369**

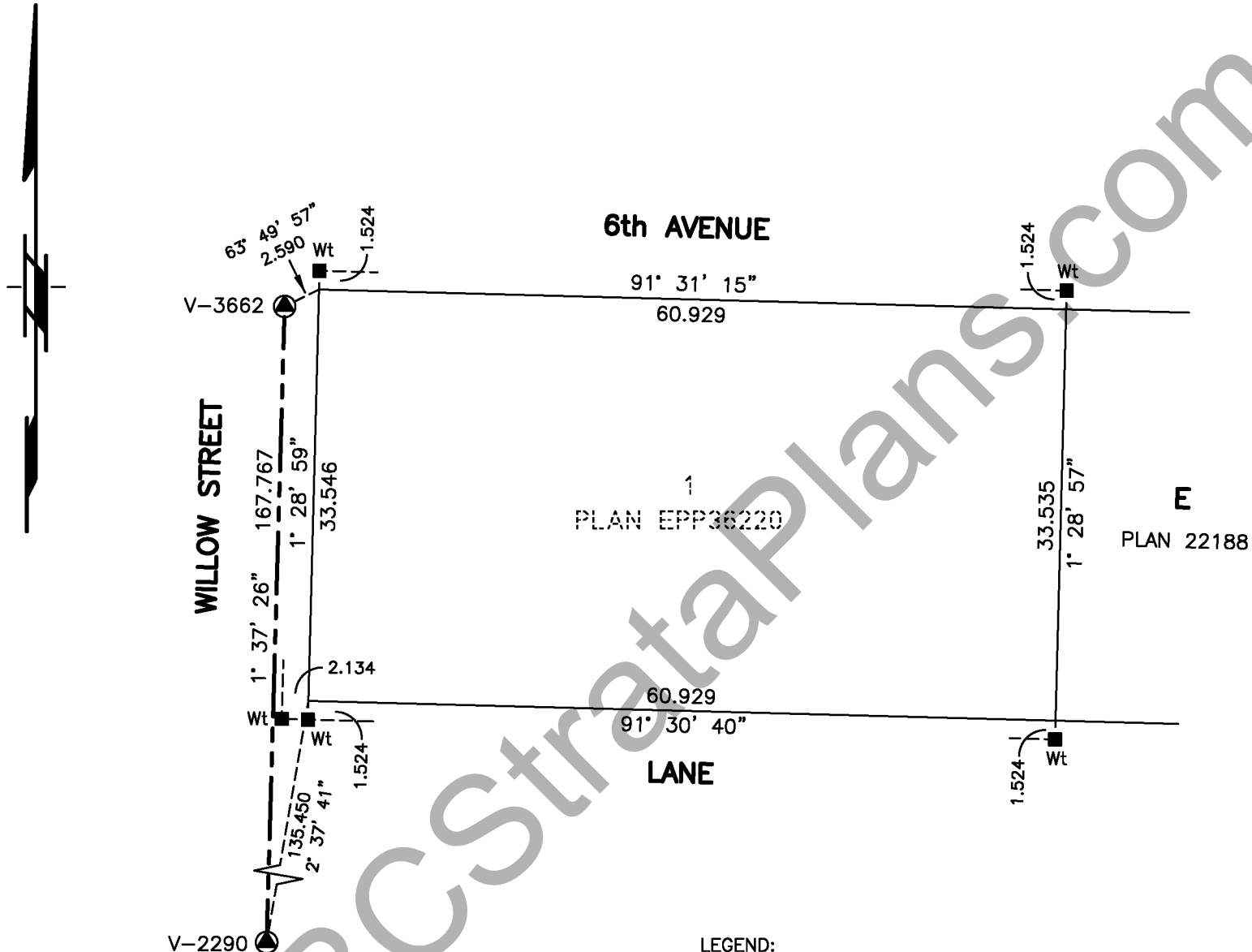
**BCGS:92G025  
(City of Vancouver)**

Civic Address:  
2200 Willow Street  
Vancouver, B.C.



All distances are in metres and decimals thereof unless otherwise indicated

The intended plot size of this plan is 280mm in width by 432mm in height (sheet size B) when plotted at a scale of 1:500.



**LEGEND:**  
 control monument found  
 lead plug found  
 Wt witness

Note: This plan shows one or more witness posts which are not set on the true corner(s).

The building shown on this strata plan is within the external boundaries of the land that is the subject of the strata plan.

The building included in this strata plan has not been previously occupied.

**LEGEND:**  
 L.C.P. denotes limited common property  
 C.P. denotes common property  
 PT.S.L. denotes part strata lot  
 S.L. denotes strata lot  
 PY denotes private yard, limited common property  
 RD denotes roof deck, limited common property  
 ST denotes storage, limited common property  
 PL denotes planter, limited common property  
 P denotes patio, limited common property  
 D denotes deck, limited common property  
 R denotes roof, common property  
 EC denotes electrical closet  
 MR denotes maintenance room  
 CC denotes comms closet  
 HB denotes hose bib  
 denotes duct space, common property  
 denotes walls for which dimensions were taken to one centimetre inside of the outside face of wall; all other walls measured to centreline

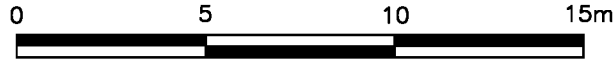
Ken K. Wong and Associates  
 Canada and B.C. Land Surveyors  
 5624 E. Hastings Street  
 Burnaby, B.C. V5B 1R4  
 Telephone: 294-8881  
 Fax: 294-0625  
 110446  
 R-972, R-5790  
 SU-2562  
 Drawn by: RH

Integrated Survey Area No. 31, Vancouver NAD83 (CSRS)  
 Grid bearings are derived from observations between geodetic control monuments V-2290 and V-3662.  
 This plan shows horizontal ground-level distances unless otherwise specified. To compute grid distances, multiply ground-level distances by the average combined factor of 0.99960145 which has been derived from control monuments V-2290 and V-3662.

The field survey represented by this plan was completed on the 9th day of January, 2014.  
 Edmund T. Wong, B.C.L.S. 409

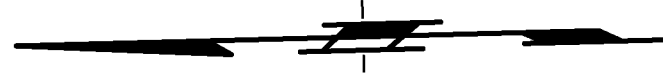
# BUILDING DIMENSIONS

## STRATA PLAN EPS1369

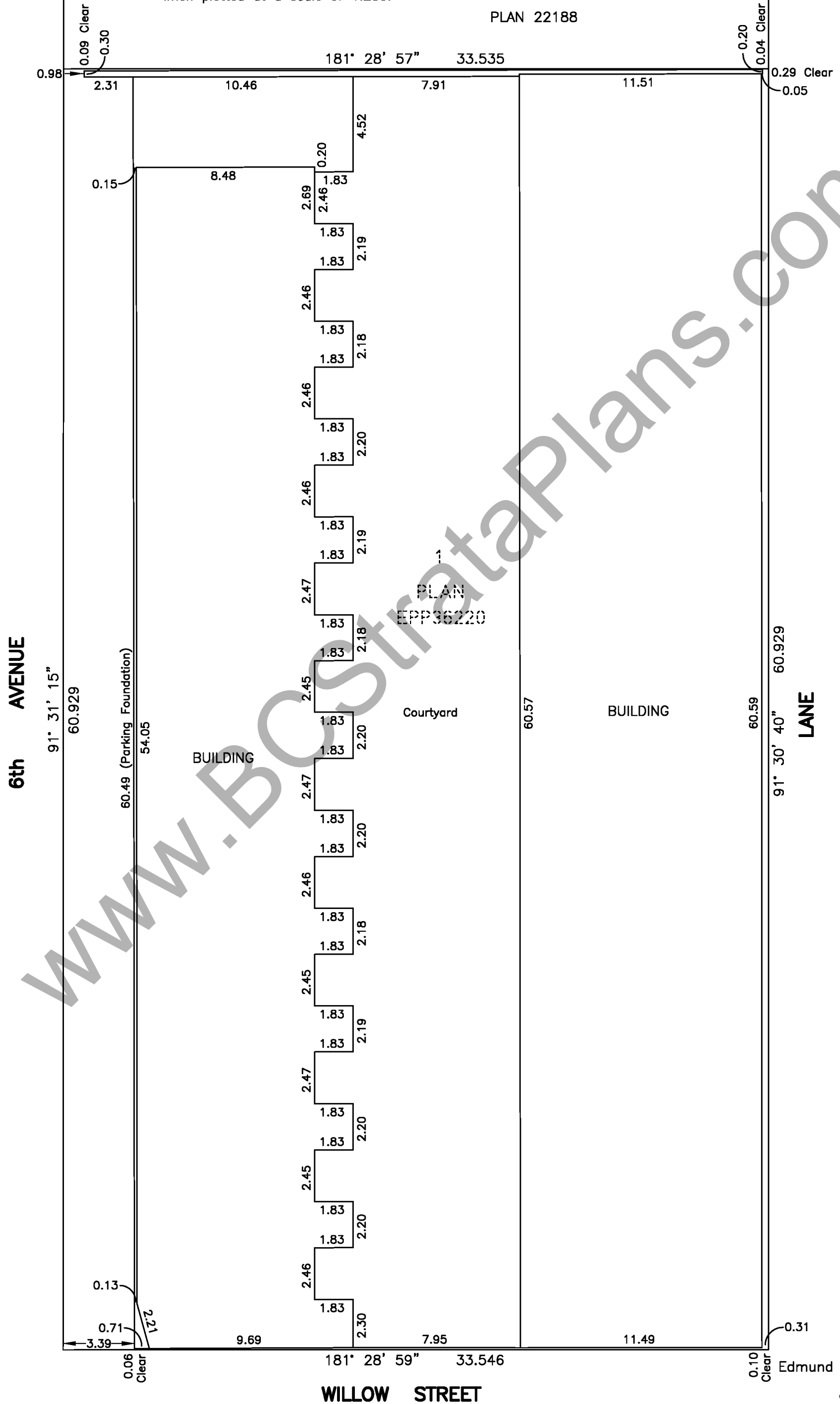


All distances are in metres and decimals thereof unless otherwise indicated

The intended plot size of this plan is 280mm in width by 432mm in height (sheet size B) when plotted at a scale of 1:200.



**E**  
PLAN 22188



**DIAGRAMMATIC ELEVATIONS**

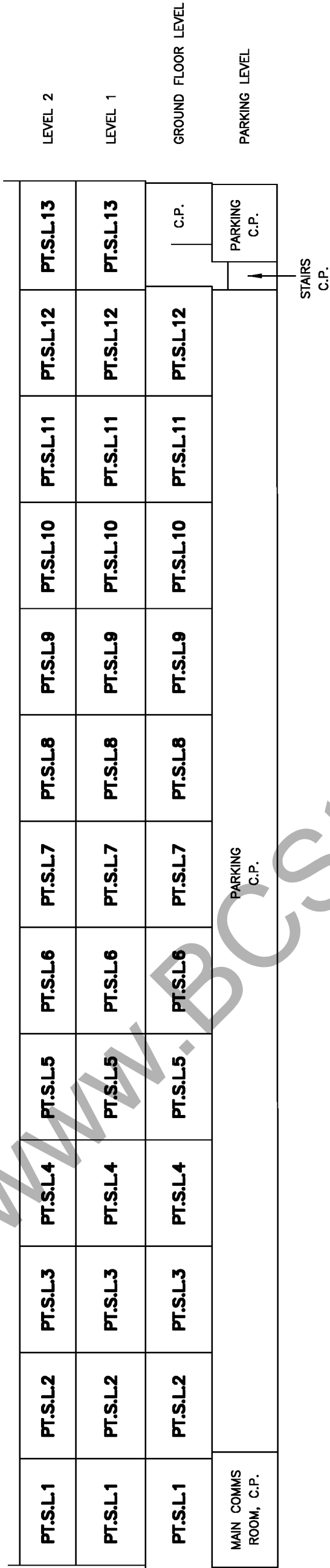
**STRATA PLAN EPS1369**



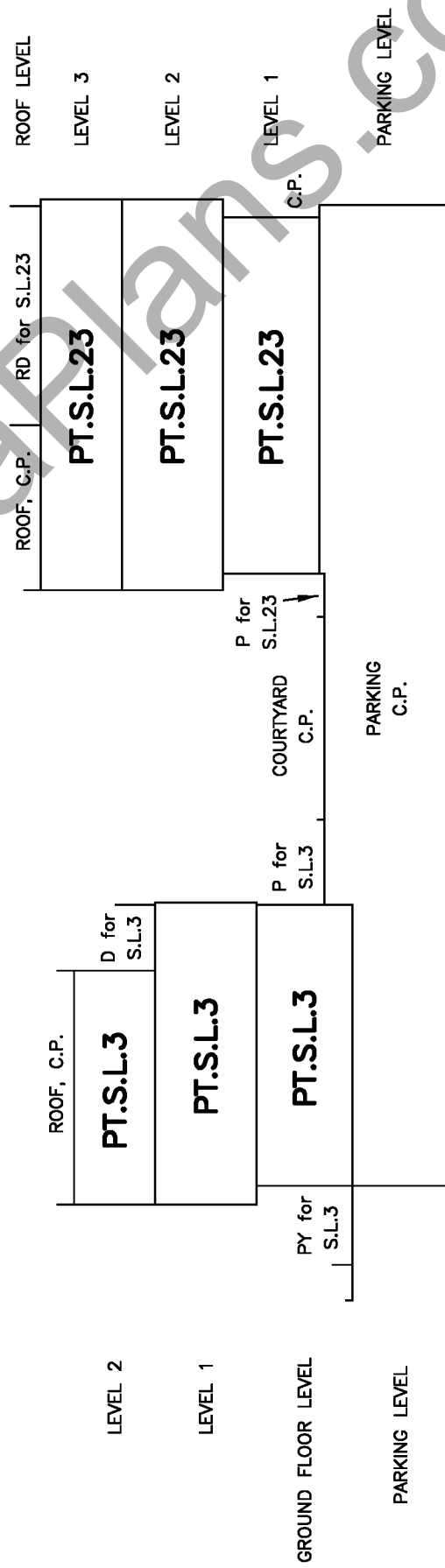
All distances are in metres and decimals thereof unless otherwise indicated

The intended plot size of this plan is 280mm in width by 432mm in height (sheet size B) when plotted at a scale of 1:200.

**SECTION B-B**



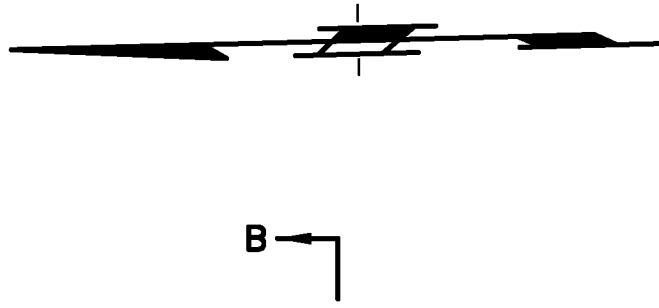
**SECTION A-A**



Edmund T. Wong, B.C.L.S.  
January 9th, 2014.

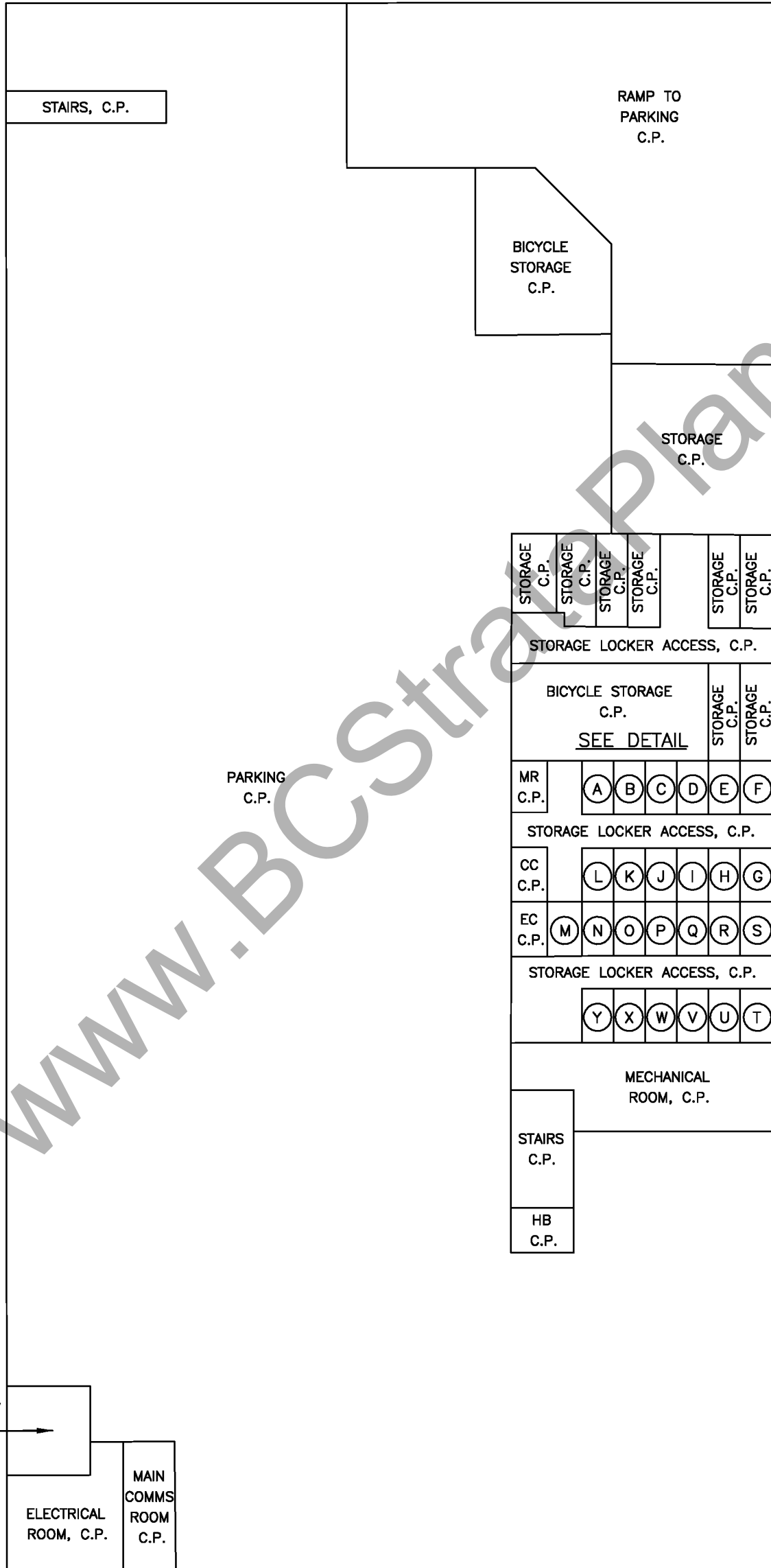
**PARKING LEVEL**

**STRATA PLAN EPS1369**



All distances are in metres and decimals thereof unless otherwise indicated

The intended plot size of this plan is 280mm in width by 432mm in height (sheet size B) when plotted at a scale of 1:200.



**DETAIL**

SCALE: 1:150

BICYCLE STORAGE, C.P.							
MR C.P.	2.07	1.22 2.07 (A)	1.22 2.07 (B)	1.22 2.07 (C)	1.22 2.07 (D)	1.22 2.07 (E)	1.35 2.07 (F)
STORAGE LOCKER ACCESS, C.P.							
CC C.P.	2.07	1.22 2.07 (L)	1.22 2.07 (K)	1.22 2.07 (J)	1.22 2.07 (I)	1.22 2.07 (H)	1.35 2.07 (G)
EC C.P. 2.10	1.33 2.09 (M)	1.22 2.09 (N)	1.22 2.09 (O)	1.22 2.09 (P)	1.22 2.09 (Q)	1.22 2.09 (R)	1.35 2.09 (S)
STORAGE LOCKER ACCESS, C.P.							
	2.09	1.22 2.09 (Y)	1.22 2.09 (X)	1.22 2.09 (W)	1.22 2.09 (V)	1.22 2.09 (U)	1.35 2.09 (T)
MECHANICAL ROOM, C.P.							

- (A) ST for S.L.1 2.5 m<sup>2</sup>
- (B) ST for S.L.2 2.5 m<sup>2</sup>
- (C) ST for S.L.3 2.5 m<sup>2</sup>
- (D) ST for S.L.4 2.5 m<sup>2</sup>
- (E) ST for S.L.5 2.5 m<sup>2</sup>
- (F) ST for S.L.6 2.8 m<sup>2</sup>
- (G) ST for S.L.7 2.8 m<sup>2</sup>
- (H) ST for S.L.8 2.5 m<sup>2</sup>
- (I) ST for S.L.9 2.5 m<sup>2</sup>
- (J) ST for S.L.10 2.5 m<sup>2</sup>
- (K) ST for S.L.11 2.5 m<sup>2</sup>
- (L) ST for S.L.12 2.5 m<sup>2</sup>
- (M) ST for S.L.13 2.8 m<sup>2</sup>
- (N) ST for S.L.14 2.5 m<sup>2</sup>
- (O) ST for S.L.15 2.5 m<sup>2</sup>
- (P) ST for S.L.16 2.5 m<sup>2</sup>
- (Q) ST for S.L.17 2.5 m<sup>2</sup>
- (R) ST for S.L.18 2.5 m<sup>2</sup>
- (S) ST for S.L.19 2.8 m<sup>2</sup>
- (T) ST for S.L.20 2.8 m<sup>2</sup>
- (U) ST for S.L.21 2.5 m<sup>2</sup>
- (V) ST for S.L.22 2.5 m<sup>2</sup>
- (W) ST for S.L.23 2.5 m<sup>2</sup>
- (X) ST for S.L.24 2.5 m<sup>2</sup>
- (Y) ST for S.L.25 2.5 m<sup>2</sup>

Edmund T. Wong, B.C.L.S.  
January 9th, 2014.

# GROUND FLOOR LEVEL

## PART STRATA LOTS 1 TO 12

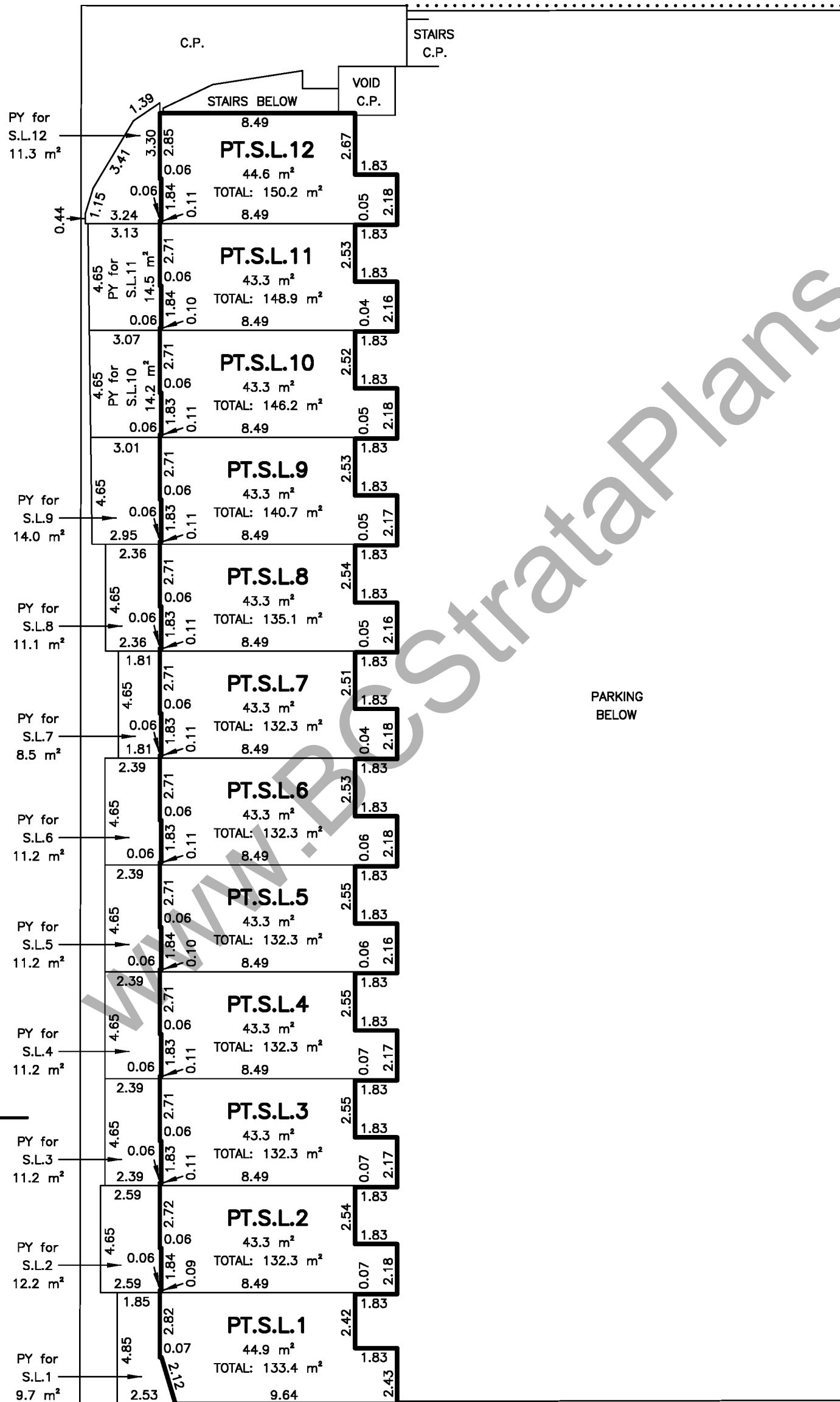
# STRATA PLAN EPS1369



All distances are in metres and decimals thereof unless otherwise indicated

The intended plot size of this plan is 280mm in width by 432mm in height (sheet size B) when plotted at a scale of 1:200.

B



PARKING BELOW

STR - 1350

B

Edmund T. Wong, B.C.L.S.  
January 9th, 2014.

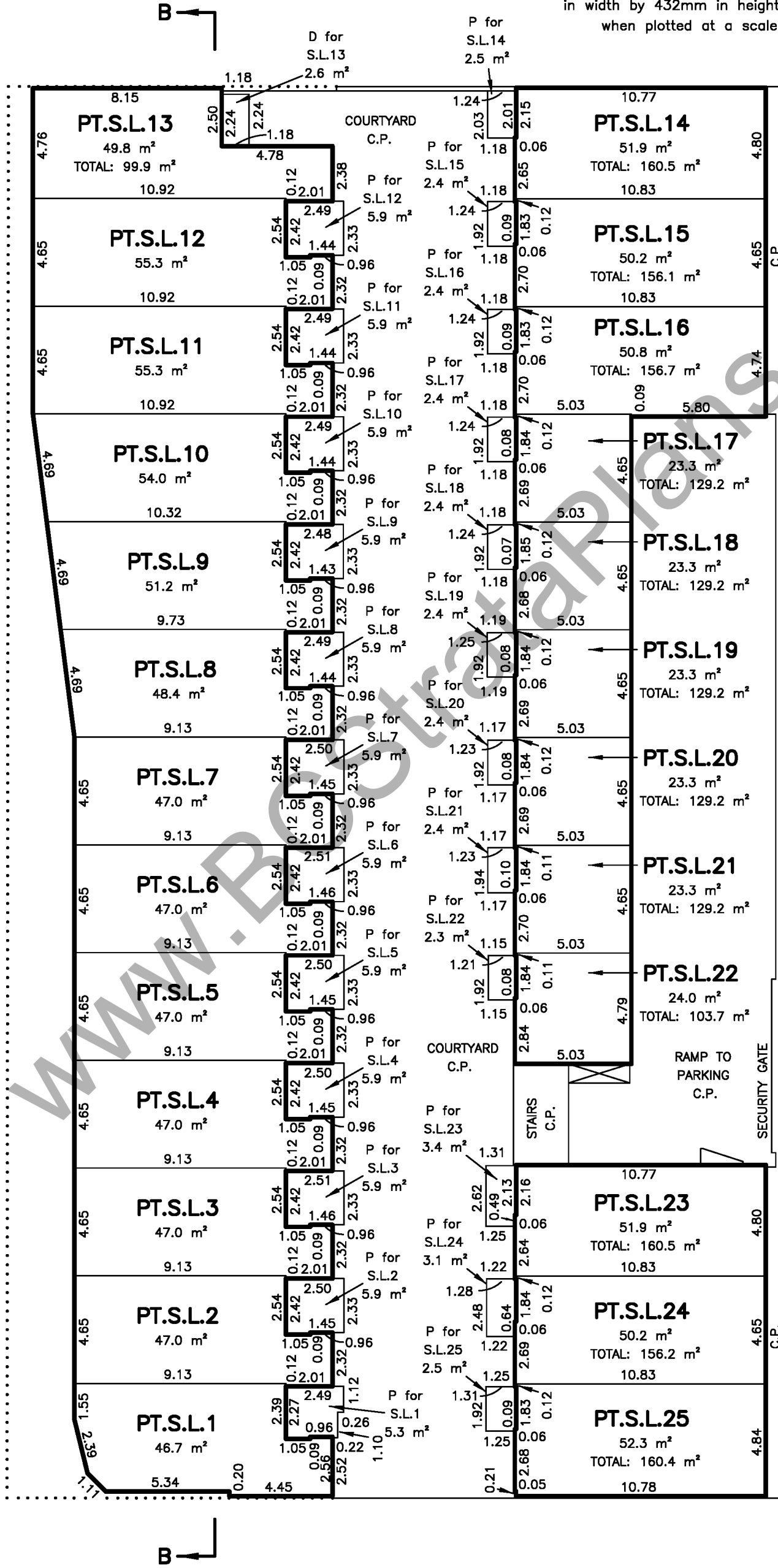
**LEVEL 1**  
**PART STRATA LOTS 1 TO 25**

**STRATA PLAN EPS1369**



All distances are in metres and decimals thereof unless otherwise indicated

The intended plot size of this plan is 280mm in width by 432mm in height (sheet size B) when plotted at a scale of 1:200.



Edmund T. Wong, B.C.L.S.  
January 9th, 2014.

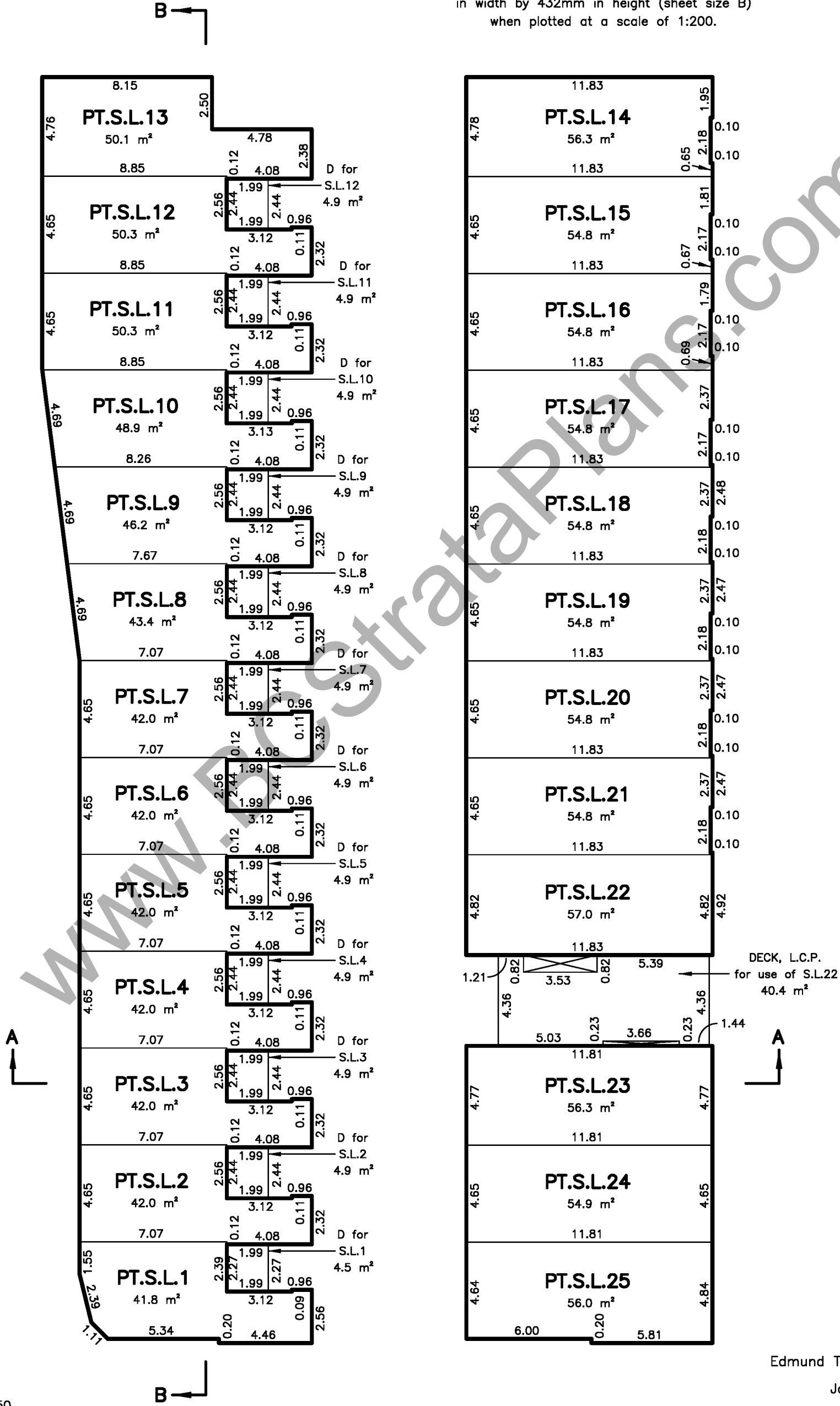
**LEVEL 2**  
**PART STRATA LOTS 1 TO 25**

**STRATA PLAN EPS1369**



All distances are in metres and decimals thereof unless otherwise indicated

The intended plot size of this plan is 280mm in width by 432mm in height (sheet size B) when plotted at a scale of 1:200.

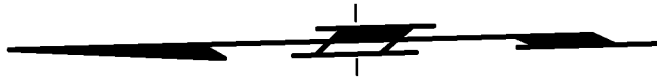


Edmund T. Wong, B.C.L.S.  
January 9th, 2014.

### LEVEL 3

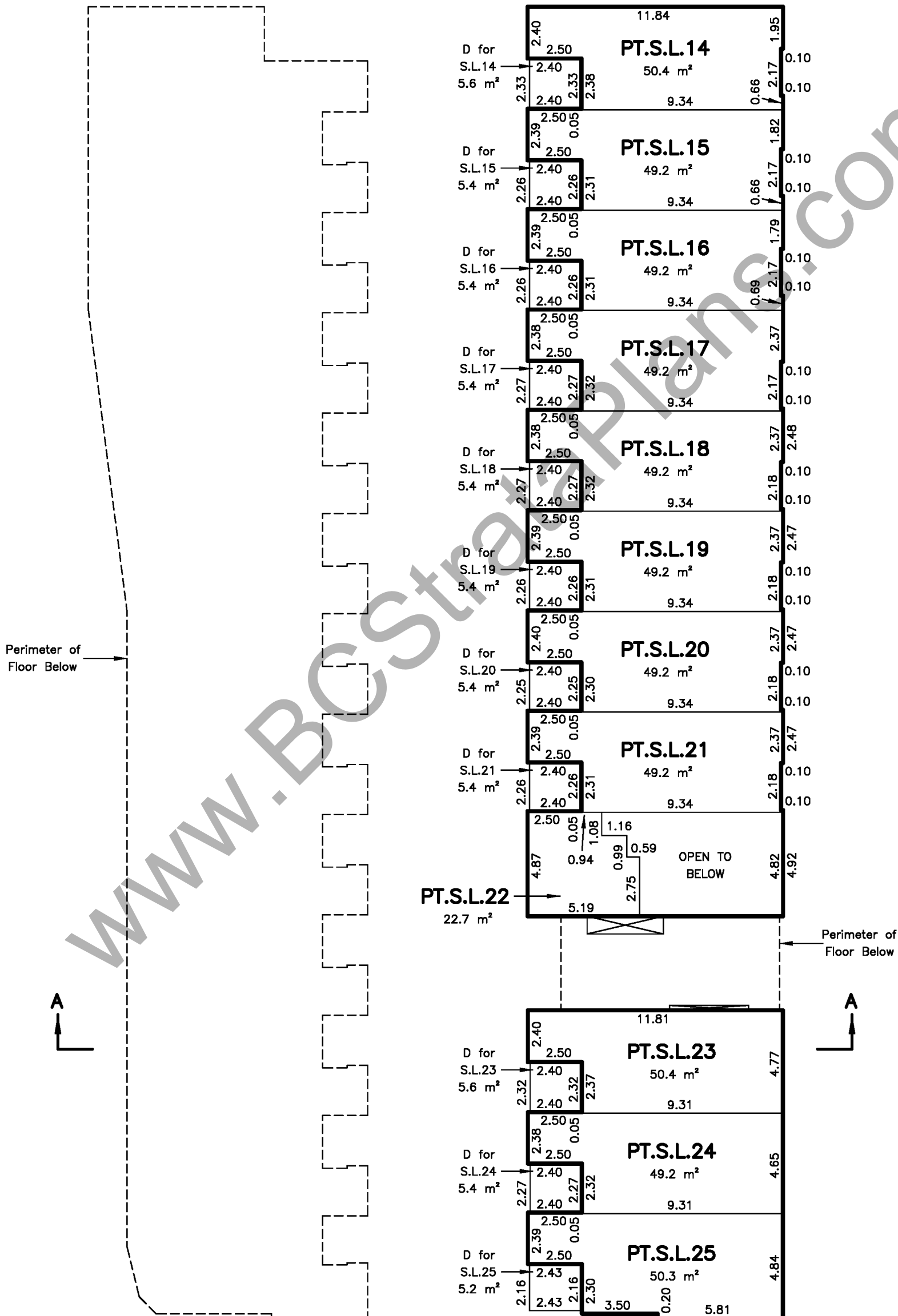
### PART STRATA LOTS 14 TO 25

### STRATA PLAN EPS1369



All distances are in metres and decimals thereof unless otherwise indicated

The intended plot size of this plan is 280mm in width by 432mm in height (sheet size B) when plotted at a scale of 1:200.



Edmund T. Wong, B.C.L.S.  
January 9th, 2014.



# ROOF LEVEL

## PART STRATA LOTS 14 TO 21, 23 TO 25

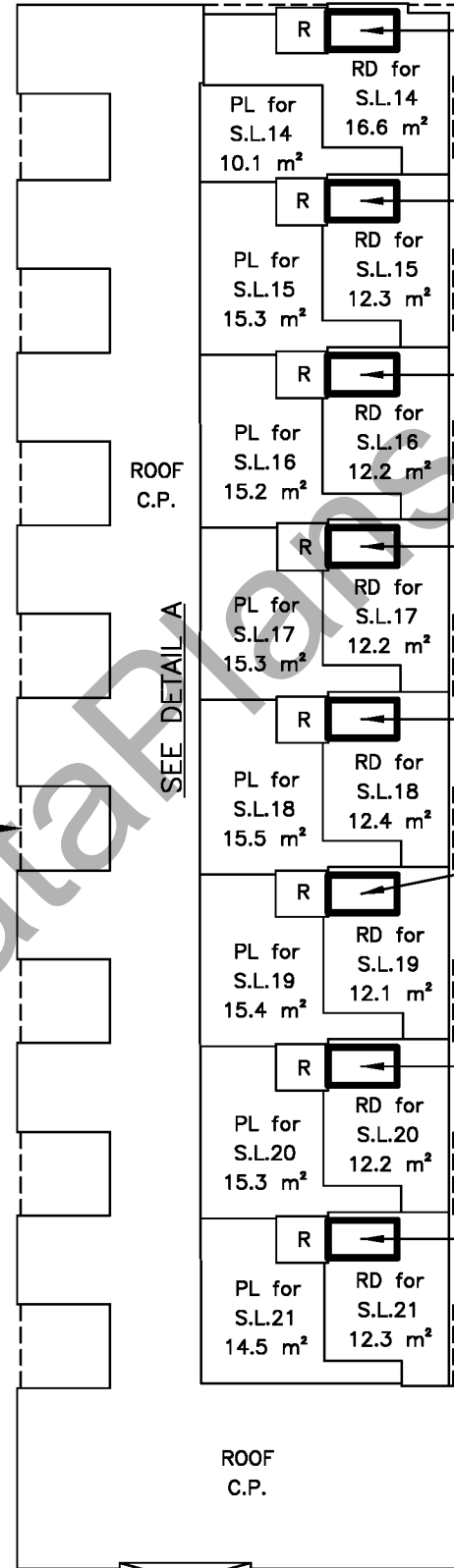
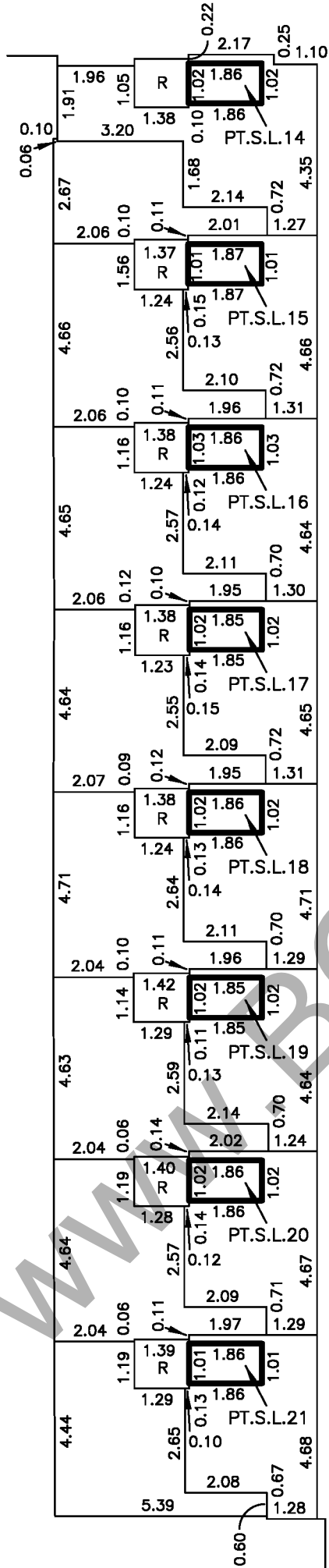
# STRATA PLAN EPS1369



All distances are in metres and decimals thereof unless otherwise indicated

The intended plot size of this plan is 280mm in width by 432mm in height (sheet size B) when plotted at a scale of 1:200.

**DETAIL A**  
SCALE: 1:150



PT.S.L.14  
1.9 m<sup>2</sup>

PT.S.L.15  
1.9 m<sup>2</sup>

PT.S.L.16  
1.9 m<sup>2</sup>

PT.S.L.17  
1.9 m<sup>2</sup>

PT.S.L.18  
1.9 m<sup>2</sup>

PT.S.L.19  
1.9 m<sup>2</sup>

PT.S.L.20  
1.9 m<sup>2</sup>

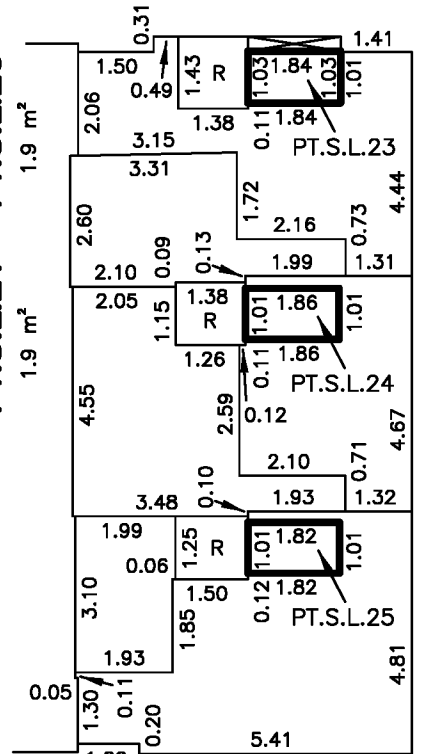
PT.S.L.21  
1.9 m<sup>2</sup>

PT.S.L.23  
1.9 m<sup>2</sup>

PT.S.L.24  
1.9 m<sup>2</sup>

PT.S.L.25  
1.8 m<sup>2</sup>

**DETAIL B**  
SCALE: 1:150



Perimeter of Floor Below

Edmund T. Wong, B.C.L.S.  
January 9th, 2014.