



MURRAY GREEN

Equal Living Made Easy



BCCONDOS.NET





B C C O N D O S . N E T



In today's hectic world, opportunities to relax and enjoy life can be hard to find. But right now, we're making easy living easy. At Murray Green. A convenient and comfortable place to enjoy life. And a perfect place to call home.

At Murray Green, thoughtful design features make easy living easier than ever.

Spacious balconies overlook a lushly landscaped central courtyard while inside, carefully designed living spaces create a home bright with natural light. And if it's country pleasures you're after, they're right here in your own community. Easy to reach and easy to enjoy. Everything from golf courses and fishing streams to riding stables and spectacular nature trails. Even closer to home are the conveniences of downtown

Langley shopping and services plus local recreation and cultural centres.

So whether you've just started looking or have been searching for a new home for some time, Murray Green offers the good life in a new home designed with you in mind.

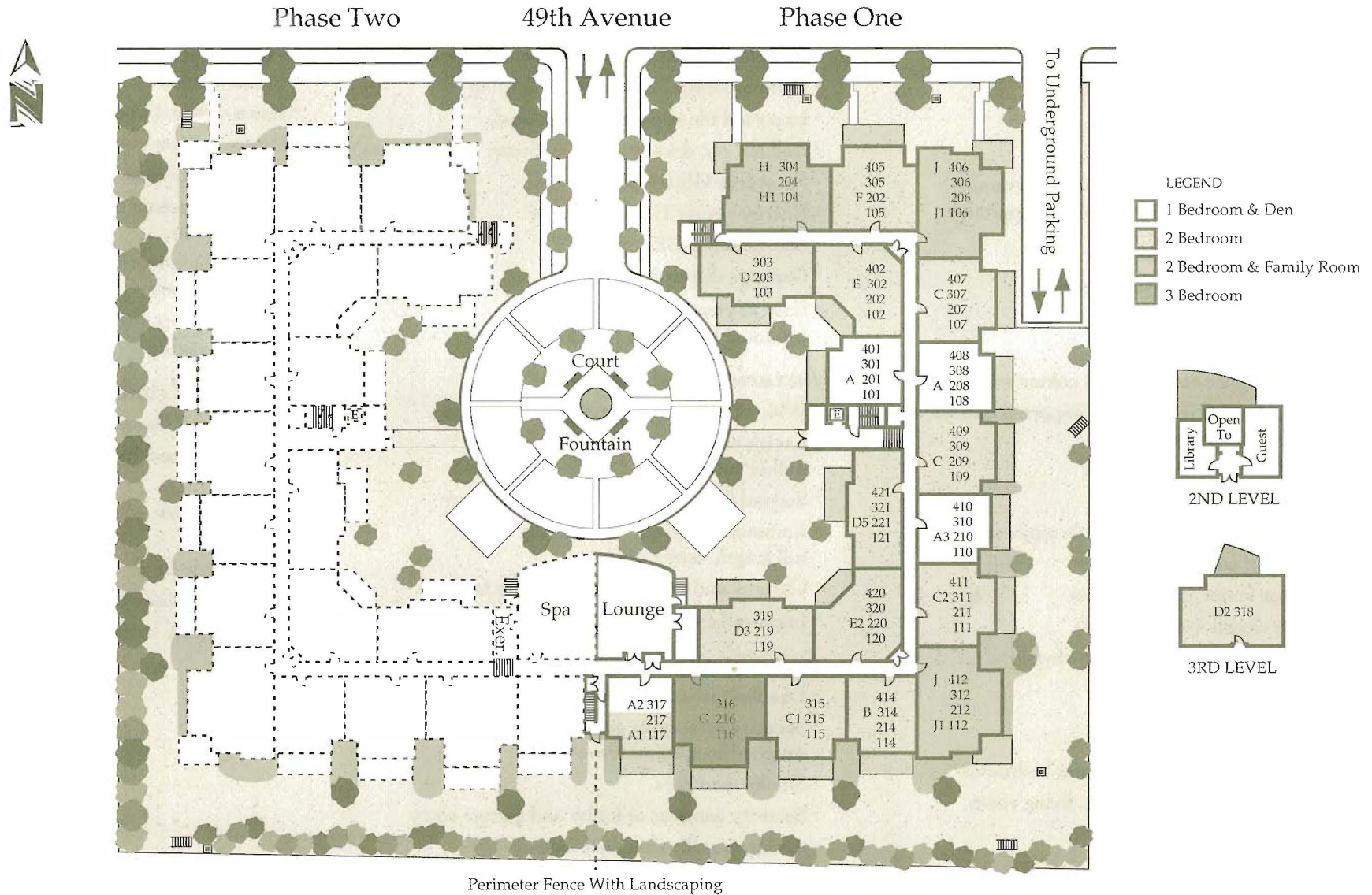
It's easy to recognize homes built by DALEX throughout the Lower Mainland and Vancouver Island. They share great locations, quality construction and features that emphasize interior finishes and special comforts.

Murray Green joins Riverwynd, Forest Side, Abbey Lane, Maplewood Creek and Wembley Place, in setting the DALEX standard for easy living at a price new home buyers appreciate.




MURRAY GREEN

Site Plan





MURRAY GREEN

Superior Murray Green Features

Dramatic First Impressions

- Elegant circular driveway
- Sparkling fountain
- Relaxing central courtyard
- Fully landscaped grounds
- Striking entrance foyer
- Individual homes with hand-set ceramic tile entry (hardwood is optional upgrade)

Fine Living Features

- Specially designed home features
- Large windows
- Extensive balconies
- Two designer co-ordinated colour schemes
- Natural gas fireplace with imported ceramic tile hearth and surround
- Polished chrome hardware
- Vertical designer blinds
- Custom wood baseboards throughout
- Rounded corners
- Storage room (some homes)
- Linen closets (some homes)
- Walk-in closets in master bedroom (some homes)
- Spacious kitchen nooks (some homes)
- TV outlets in living room and bedrooms
- Telephone jacks in kitchen, living room, and bedroom
- Washer and dryer

Gourmet Kitchens

- White European side wrap cabinets
- Double stainless sink with vegetable sprayer
- Contemporary halogen track lighting
- Imported tile backsplash (optional)
- Roll out pot drawer and lazy Susan (some homes)
- Frost-free GE fridge
- Energy saving GE dishwasher
- Self-cleaning GE range
- Garbage disposal roughed-in
- Easy to clean vinyl flooring (optional hardwood flooring)

Luxurious Bathrooms

- White European side-wrapped cabinets
- Lavish ensuites with large shower or soaker tub
- Second bath-soaker tub or large shower
- Luminous cosmetic bar lighting over full length vanity mirror
- Chrome and white porcelain lever faucets
- Imported ceramic hand-set wall tile

Security and Energy Efficiency

- Deadbolt in individual entry door
- Security systems in ground floor homes, roughed-in systems elsewhere
- Smoke detectors
- Security cameras at lobby and garage entry
- Architecturally designed fencing
- Five year B.C. New Home Warranty

Construction Excellence

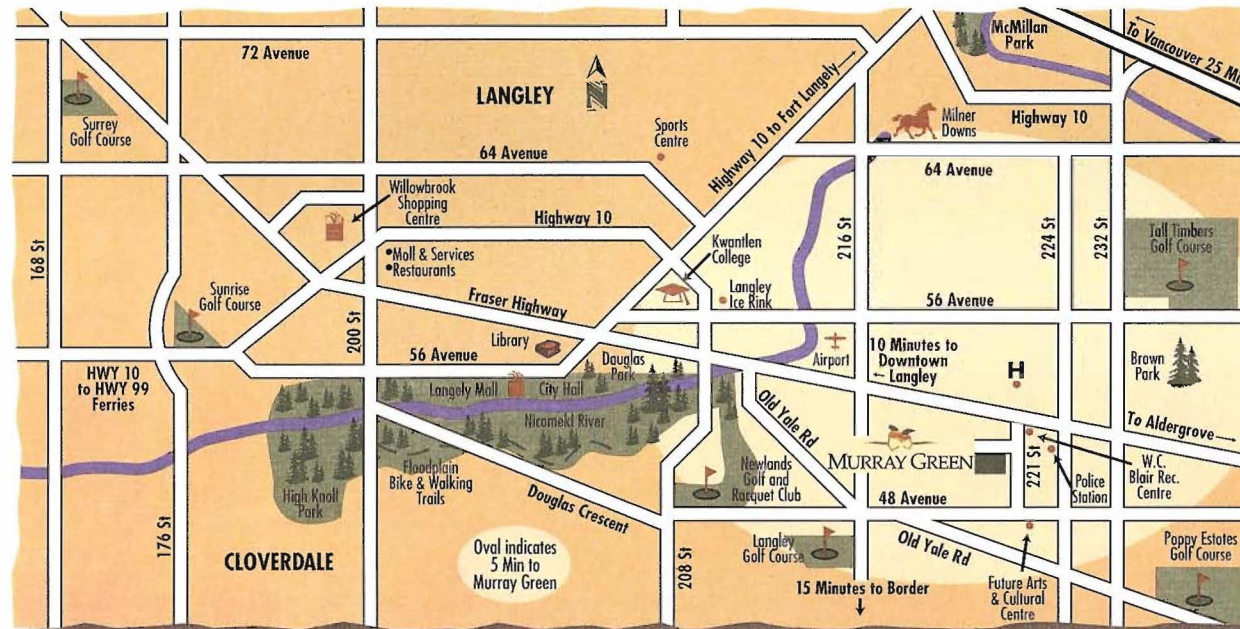
- Dalex quality
- Convenient side by side laundry (some homes)
- Linen closets (where possible)
- Pantry (where possible)
- Thermally broken double glazed windows
- Central domestic natural gas-fired hot water system
- Electric baseboards individually controlled by thermostats
- Superior party wall construction for sound proofing

Thoughtful Amenities

- Library and Games Room
- Fully-equipped Exercise Room (Phase 2)
- Change Room (Phase 2)
- Spa (Phase 2)
- Guest Suite fully furnished
- Conveniently located Mail Room



You'll Love The Langley Lifestyle.



Golf courses and fishing streams. Riding stables and spectacular nature trails.
Easy access to the border. Plus all the conveniences of downtown Langley.
Shops and services. Recreation and cultural centres.
Country pleasures and city conveniences. Easy to reach and easy to enjoy.
That's the Langley lifestyle at Murray Green.

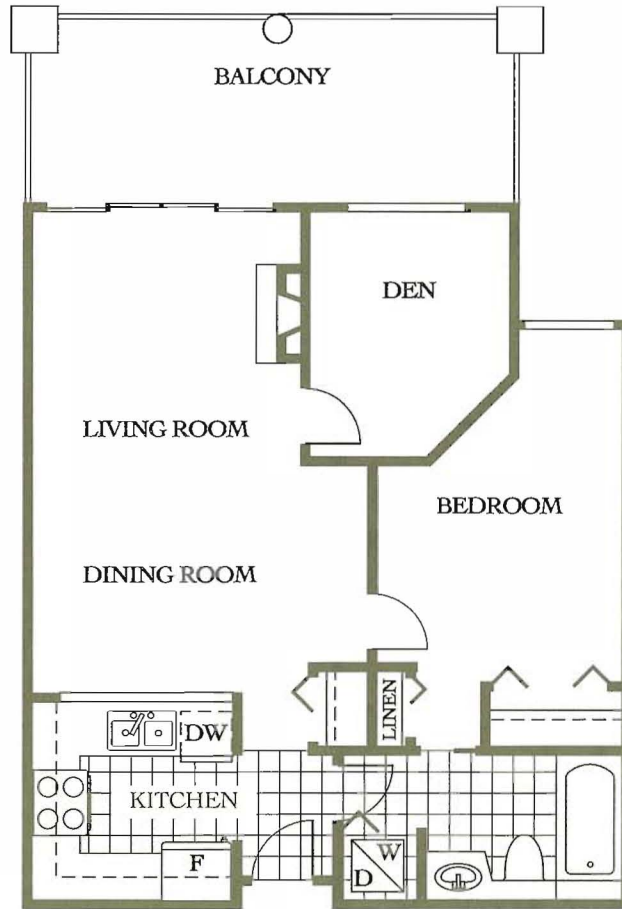




MURRAY GREEN

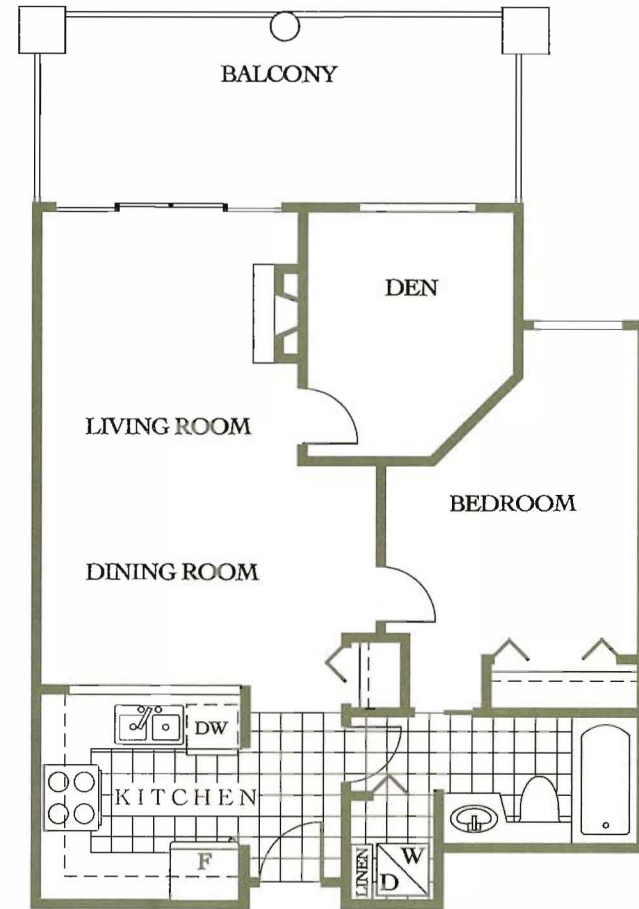
Plan A

1 Bedroom & Den • Approx. 729 - 740 Sq. Ft.



Plan A3

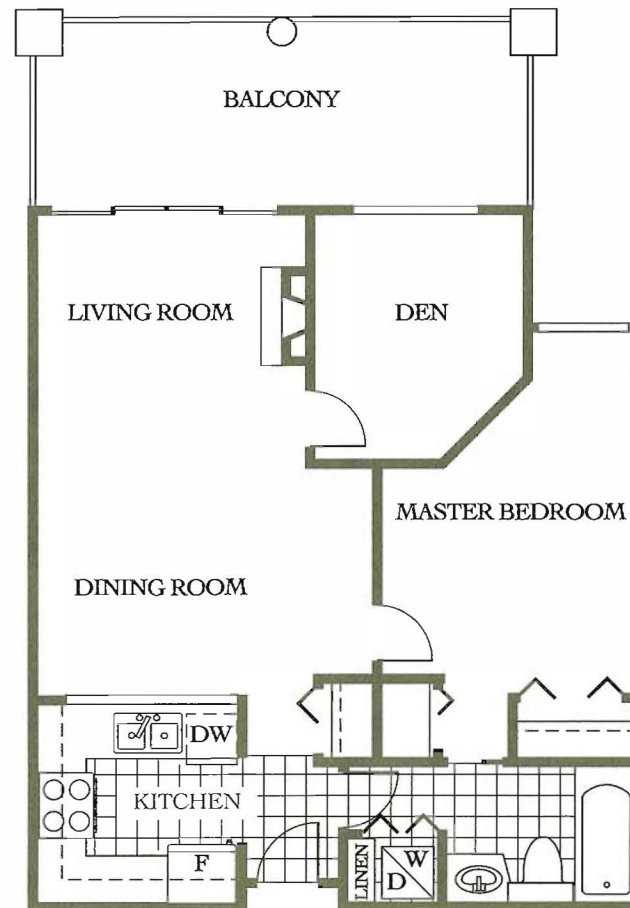
1 Bedroom & Den • Approx. 713 - 740 Sq. Ft.



MURRAY GREEN

Plan B

Bedroom & Den • Approx. 785 Sq. Ft.

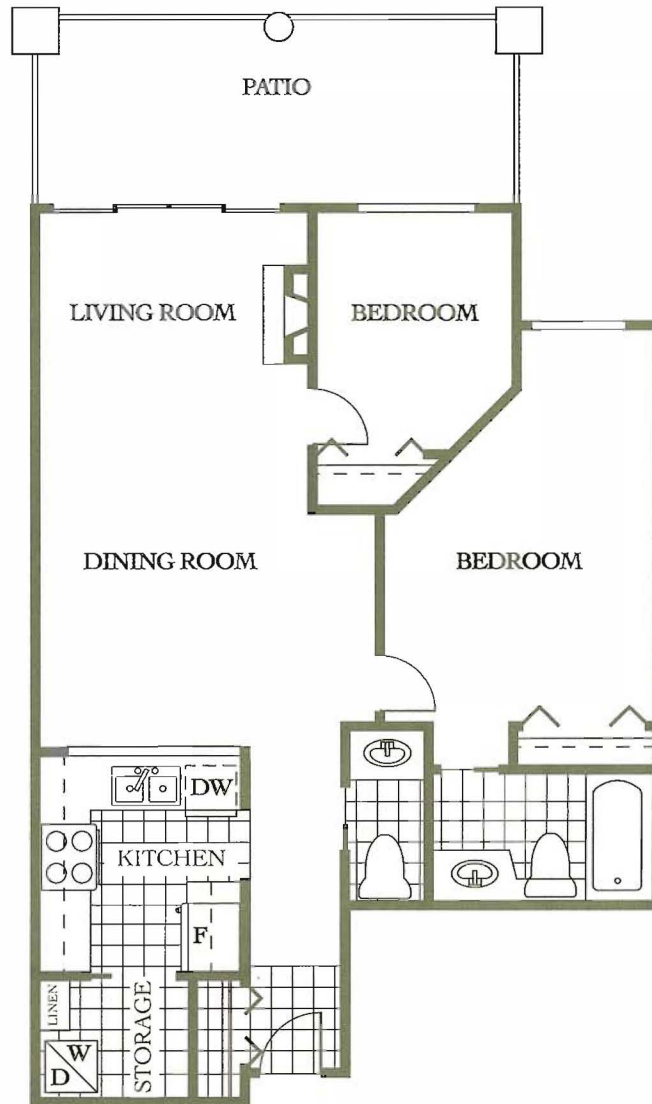




MURRAY GREEN

Plan A1

2 Bedroom • Approx. 842 Sq. Ft.



Plan A2

2 Bedroom • Approx. 942 Sq. Ft.





MURRAY GREEN

Plan C

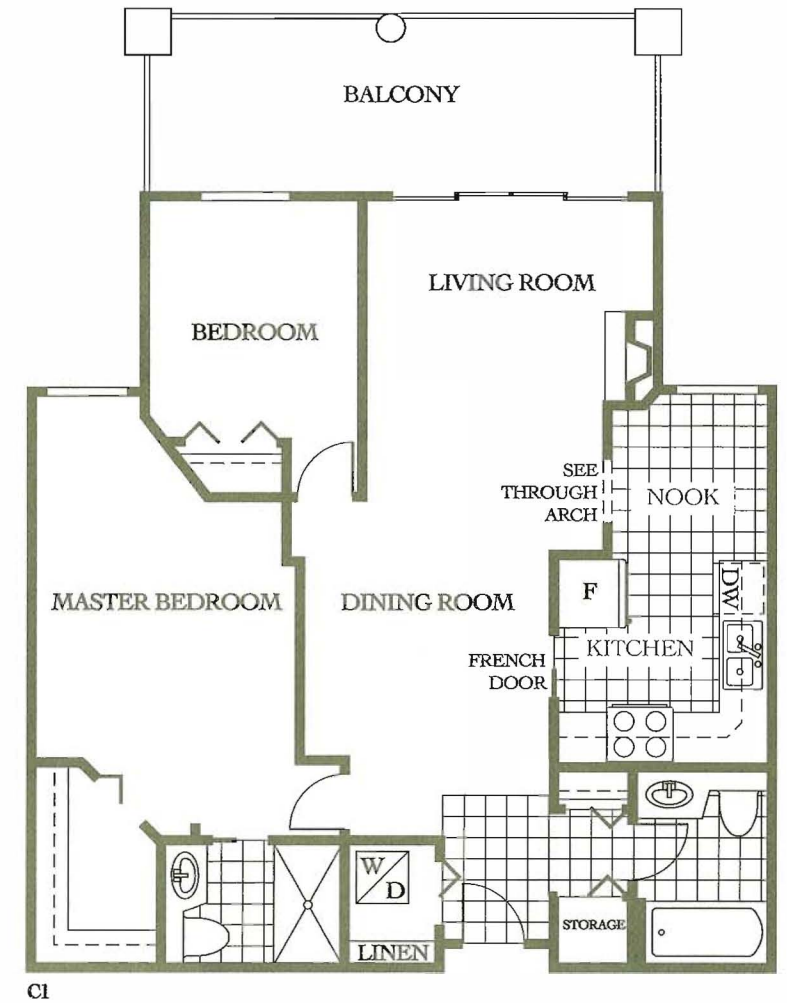
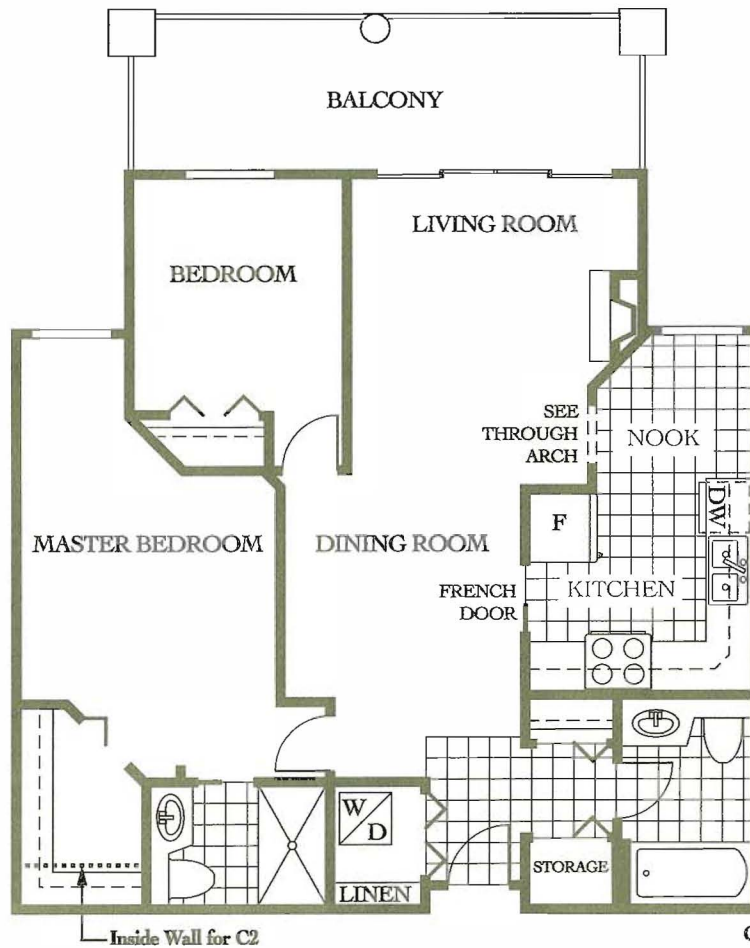
2 Bedroom • Approx. 938 Sq. Ft.

Plan C2

2 Bedroom • Approx. 915 Sq. Ft.

Plan C1

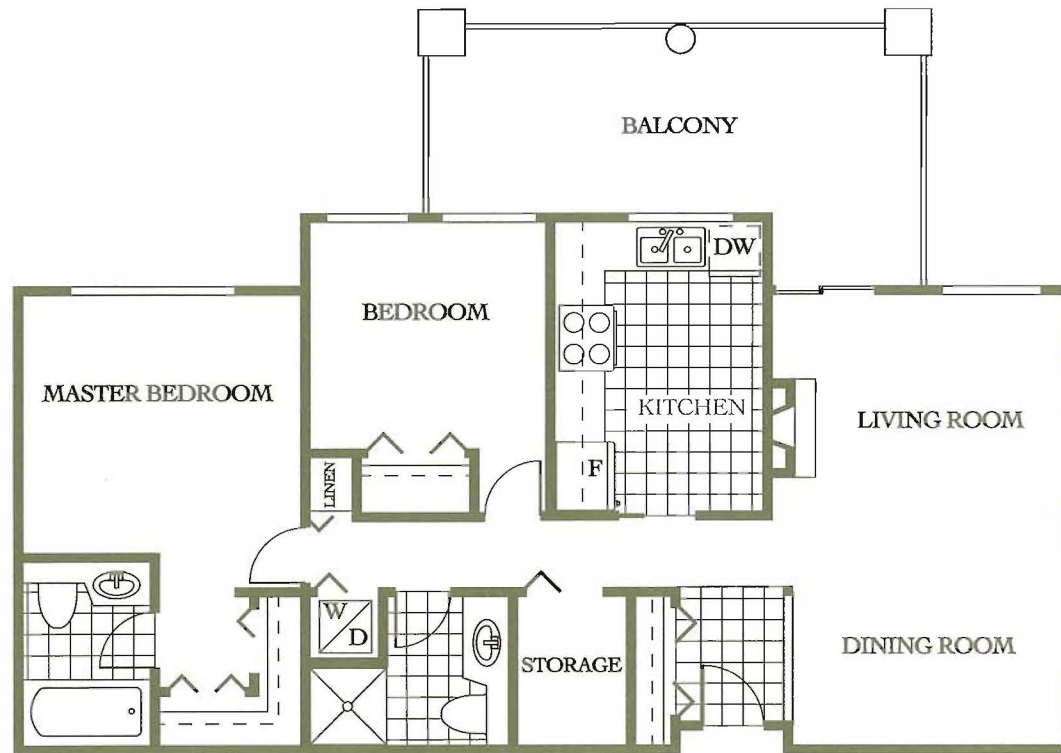
2 Bedroom • Approx. 967 Sq. Ft.



MURRAY GREEN

Plan D

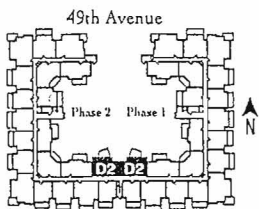
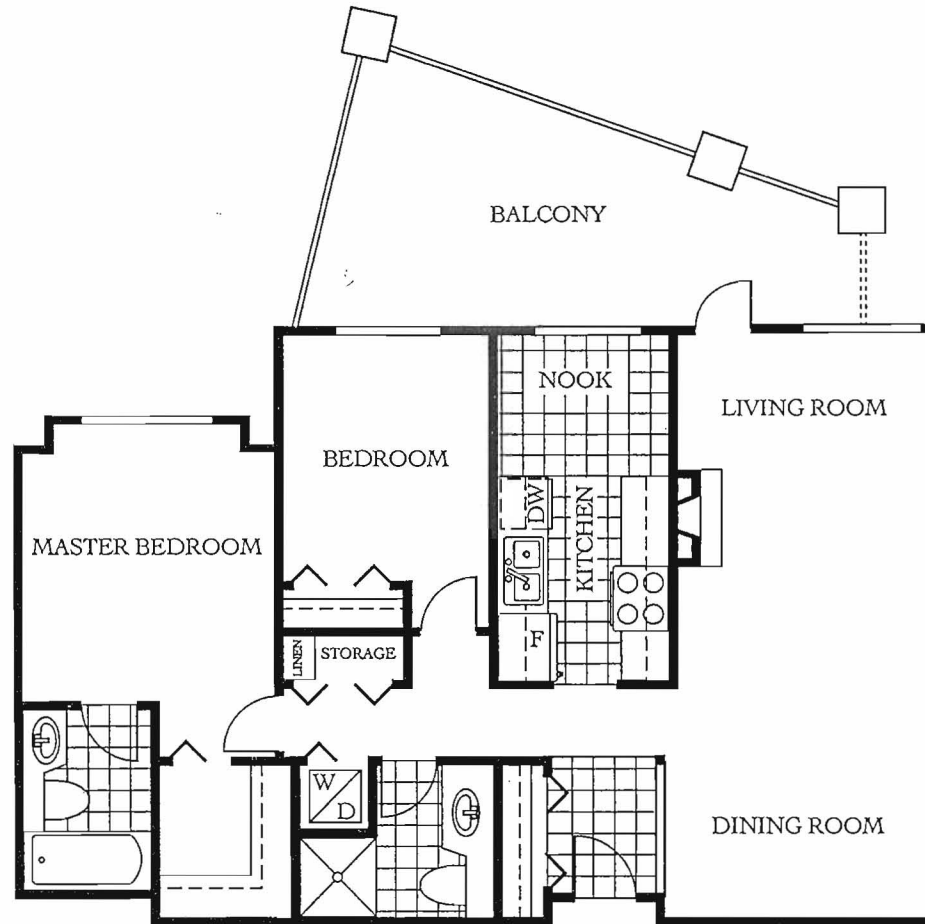
2 Bedroom • Approx. 934 Sq. Ft.




MURRAY GREEN

Plan D2

2 Bedroom • Approx. 938 Sq. Ft.



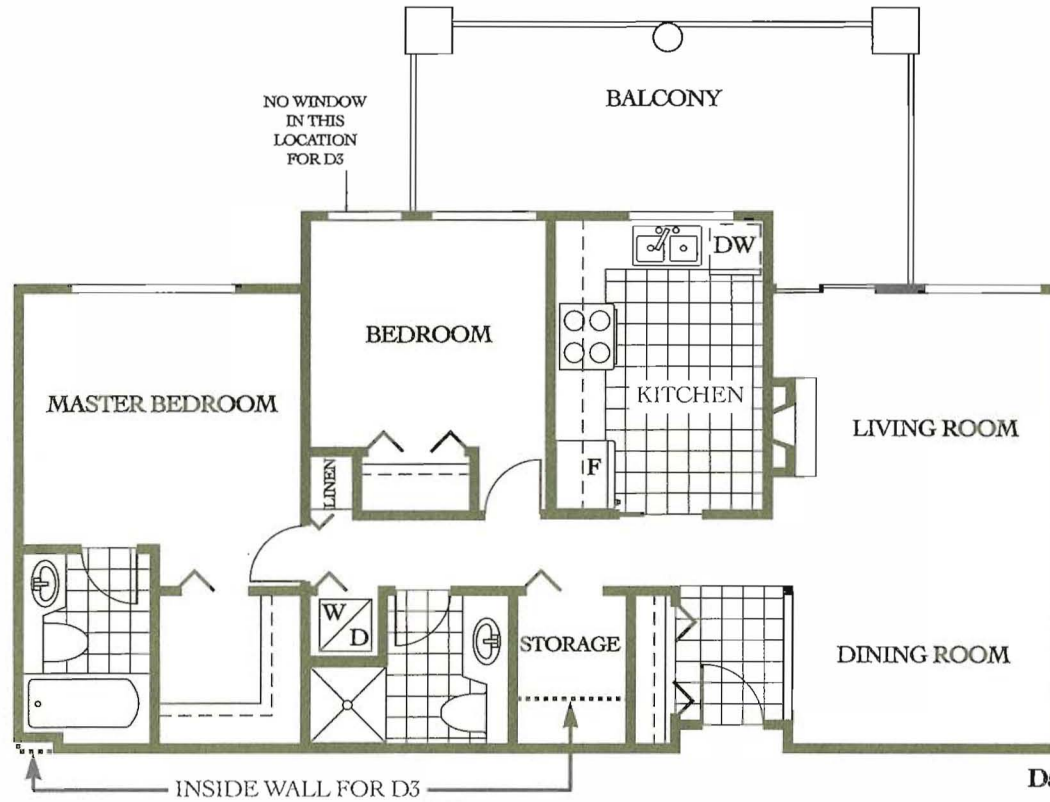

MURRAY GREEN

Plan D3

2 Bedroom • Approx. 928 Sq. Ft.

Plan D5

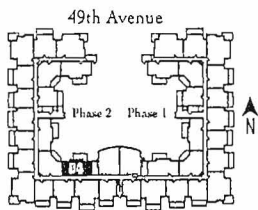
2 Bedroom • Approx. 922 Sq. Ft.




MURRAY GREEN

Plan D4

2 Bedroom • Approx. 935 Sq. Ft.



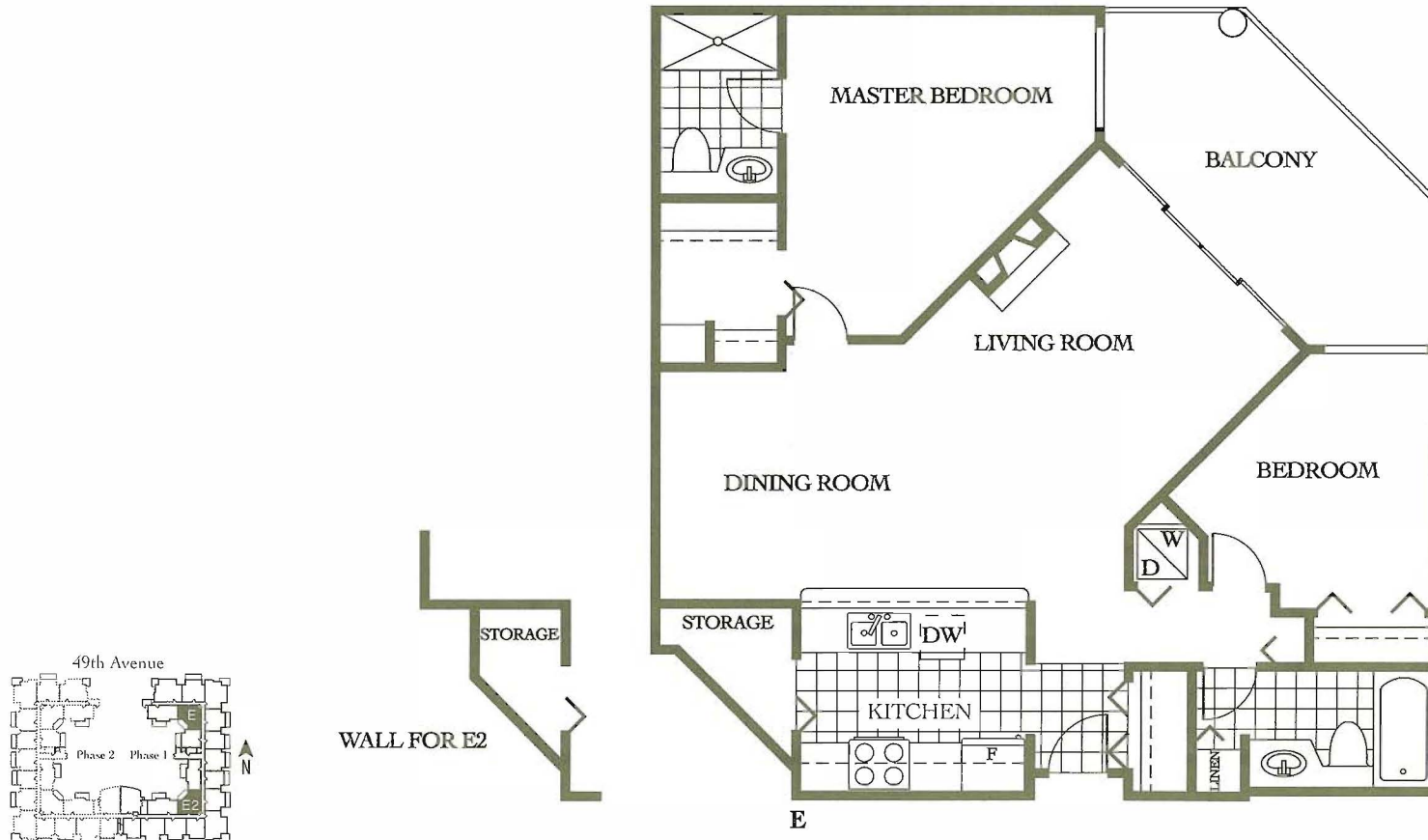

MURRAY GREEN

Plan E

2 Bedroom • Approx. 991 Sq. Ft.

Plan E2

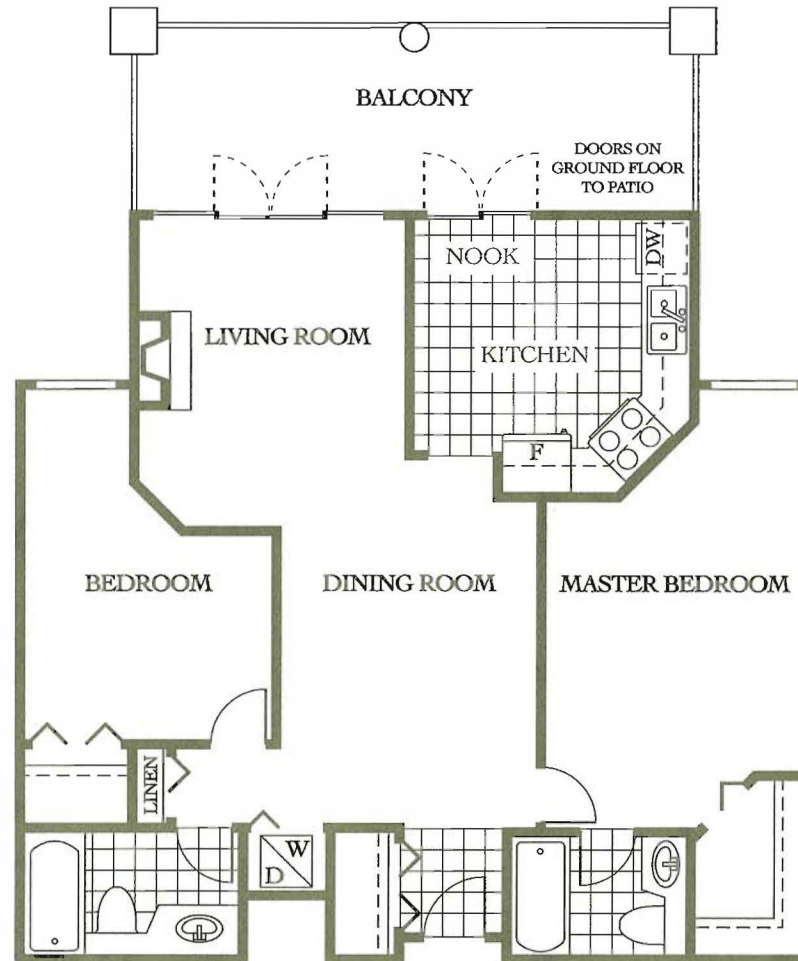
2 Bedroom • Approx. 975 Sq. Ft.



MURRAY GREEN

Plan F

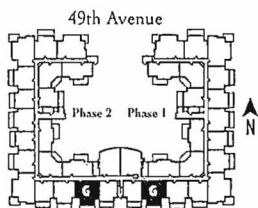
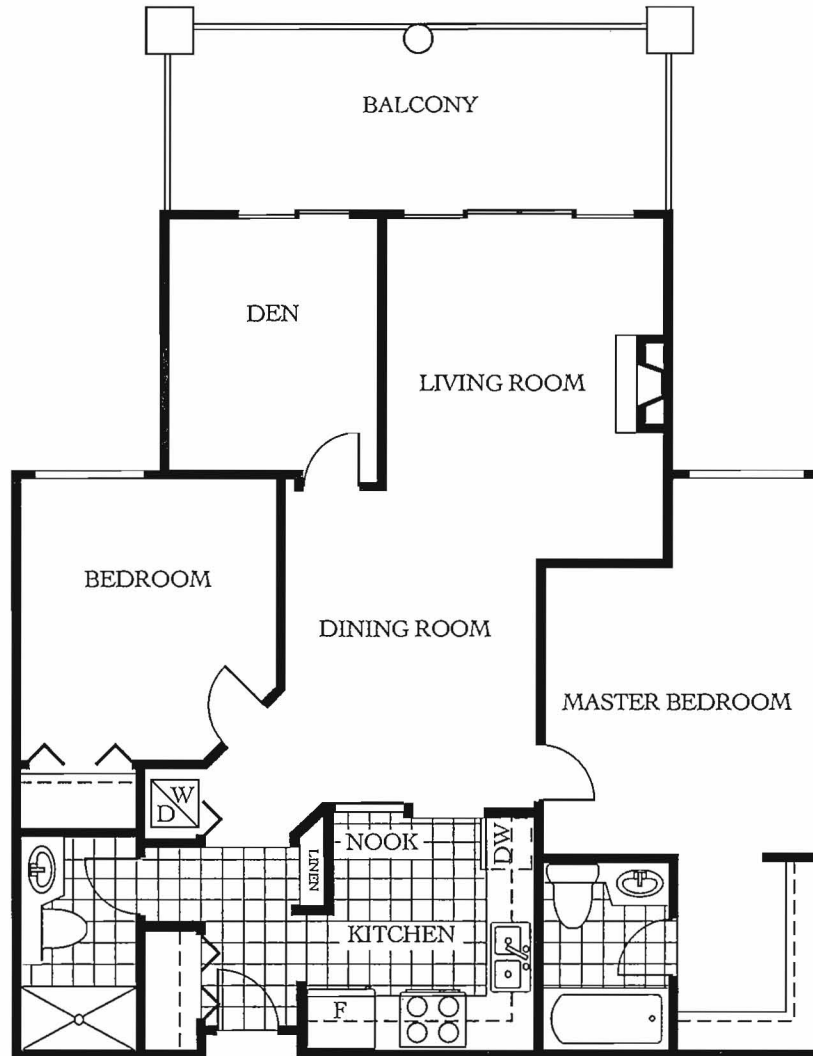
2 Bedroom • Approx. 997 Sq. Ft.




MURRAY GREEN

Plan G

2 Bedroom & Den • Approx. 1,092 Sq. Ft.



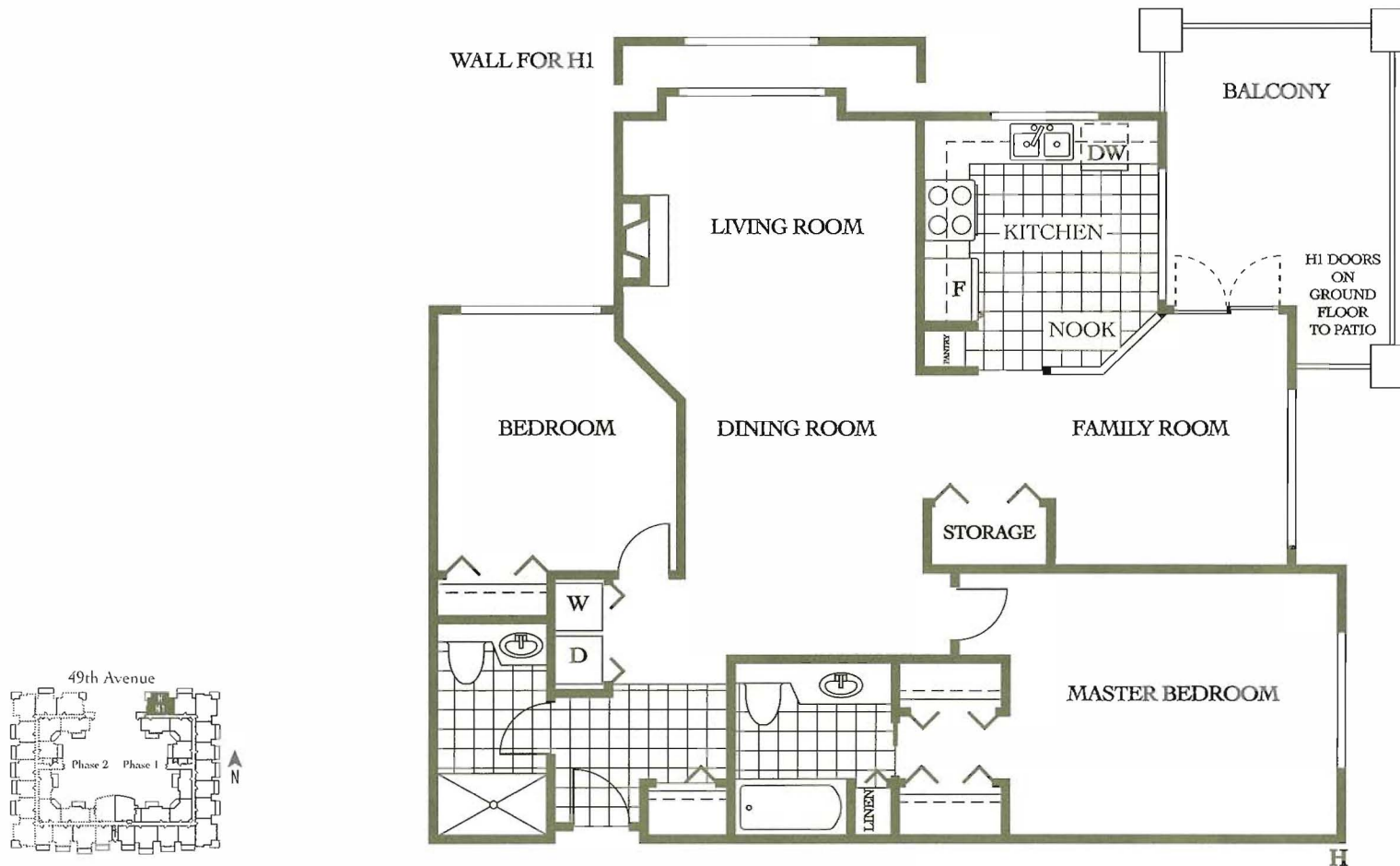

MURRAY GREEN

Plan H

2 Bedroom & Family Room • Approx. 1,235 Sq. Ft.

Plan H1

2 Bedroom & Family Room • Approx. 1,227 Sq. Ft.





MURRAY GREEN

Plan J

2 Bedroom & Family Room • Approx. 1,243 Sq. Ft.

Plan J1

2 Bedroom & Family Room • Approx. 1,235 Sq. Ft.

