

**STRATA PLAN OF LOT 1
SECTION 7 TOWNSHIP 2
N.W.D. PLAN LMP 27014**

B.C.G.S. 926.016
CITY OF SURREY

FIRST SHEET, SHEET 1 OF 11 SHEETS

STRATA PLAN LMS: 2541

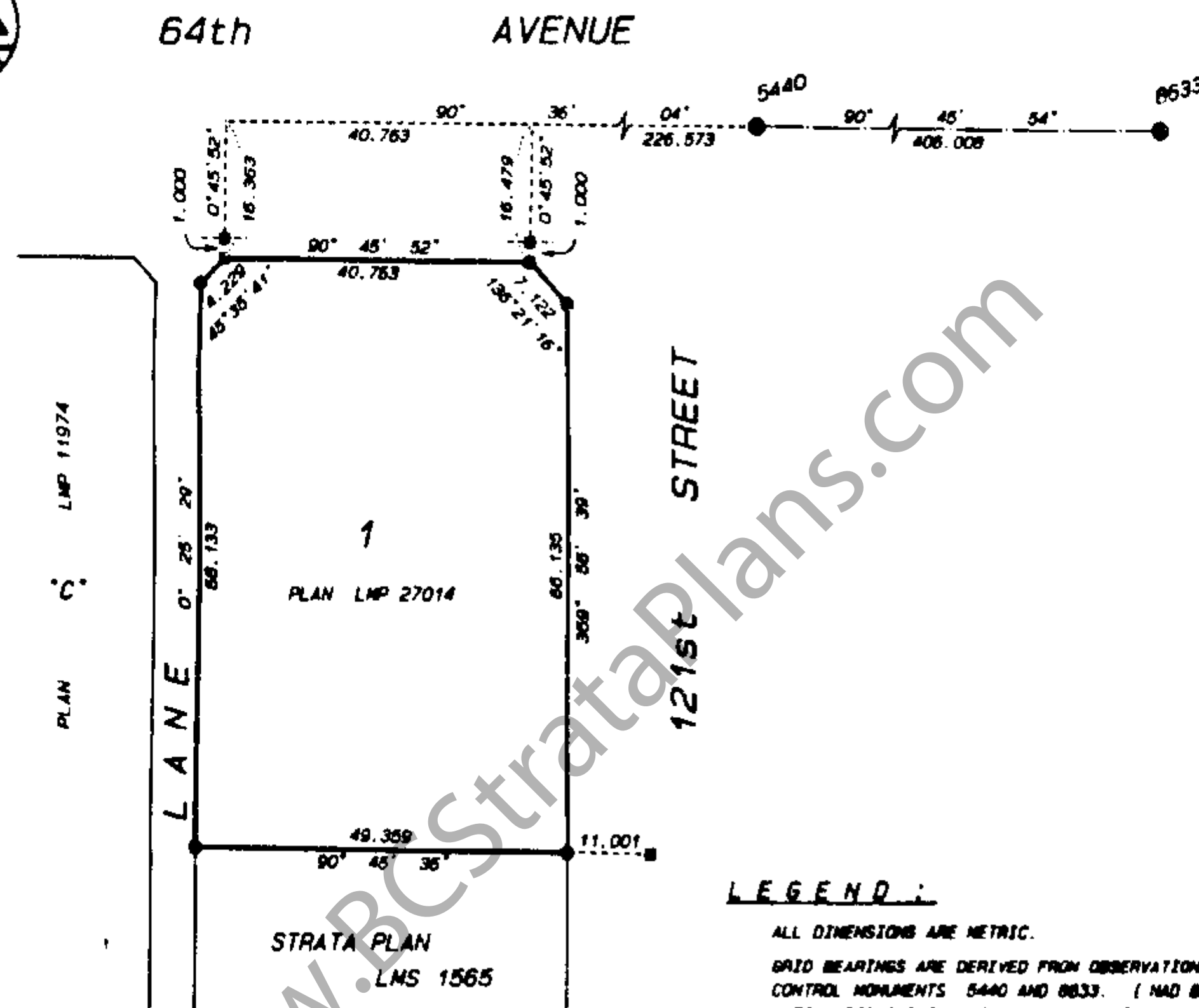
REF. NO. BK 301520 - BK 301553

STRATA PLAN LMS 2541 deposited and registered
in the Land Title Office at New Westminster, B.C.
This 24 day of SEPTEMBER, 1996

Assistant Deputy Registrar

THIS PLAN LIES WITHIN THE GREATER
VANCOUVER REGIONAL DISTRICT.

SCALE 1:750



LEGEND:

ALL DIMENSIONS ARE METRIC.
GRID BEARINGS ARE DERIVED FROM OBSERVATIONS BETWEEN
CONTROL MONUMENTS 5440 AND 8633. (MAD 83)
INTEGRATED SURVEY AREA NO. 1, SURREY.
THIS PLAN SHOWS GROUND LEVEL MEASURED DISTANCES.
PRIOR TO COMPUTATION OF U.T.M. CO-ORDINATES
MULTIPLY BY COMBINED FACTOR 0.99999936.

- = CONTROL MONUMENT FOUND
- = LEAD PLUS FOUND
- = IRON POST FOUND

- m² = SQUARE METRES
- S.L. = STRATA LOT
- C.P. = COMMON PROPERTY
- E = ELEVATOR
- Y = MECHANICAL / VENTILATION SHAFT
- N = ELECTRICAL CLOSET
- P = PATIO
- D = DECK

NOTE: PATIOS AND DECKS ARE LIMITED COMMON
PROPERTY FOR USE OF THE STRATA LOTS
INDICATED. (EXAMPLE: P - 1, D - 13)

I, J. STEPHEN CAMPBELL, of Port Cowichan, B.C., British Columbia
Land Surveyor, hereby certify that the building erected on the
parcel described above is wholly within the external boundaries
of that parcel.

Dated at Richmond, B.C.

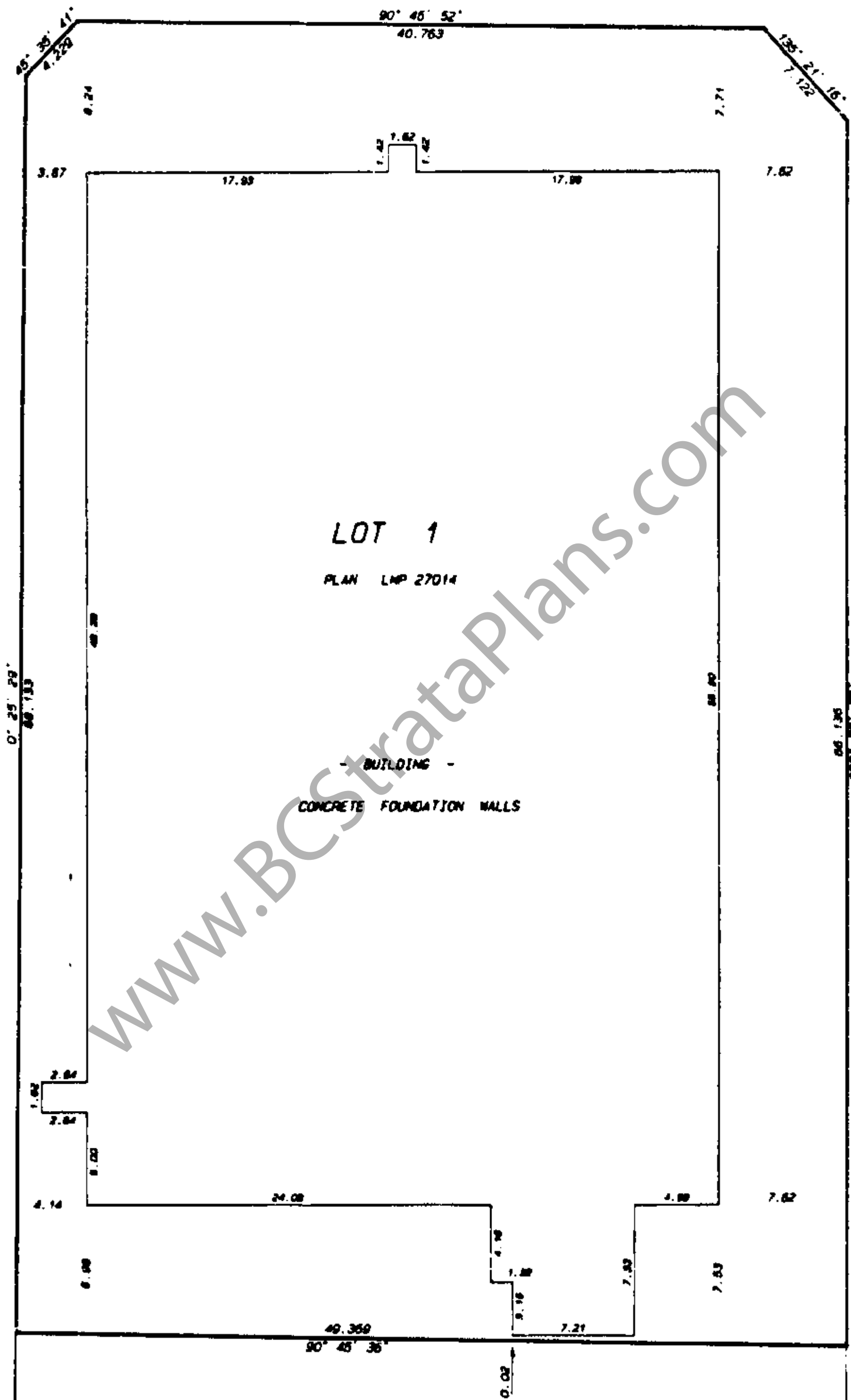
This 14 day of August, 1996

John Campbell B.C.L.S.

MATSON, PECK & TOPLISS
SURVEYORS AND ENGINEERS
210-8171 COOK ROAD
RICHMOND, B.C. V6Y 3T8
(ph) 270-8331
(fax) 270-4137

JOB NO. S - 11678

SCALE 1:250



STRATA PLAN LMS 1565

MATSON, PECK & TOPLISS
SURVEYORS AND ENGINEERS
210-8171 COOK ROAD
RICHMOND, B.C. V6Y 3T8
(ph) 270-8331
(fax) 270-4137

JOB NO. R - 11678

STRATA PLAN LMS

FIRST SHEET, SHEET 2 OF 11 SHEETS

STRATA PLAN LMS

SECOND SHEET, SHEET 3 OF 11 SHEETS

CONDOMINIUM ACT.

LOT NO.	SHEET NO.	FORM 1	FORM 2	FORM 3
		SCHEDULE OF UNIT ENTITLEMENT	SCHEDULE OF INTEREST UPON DESTRUCTION	SCHEDULE OF VOTING RIGHTS
		UNIT ENTITLEMENT	INTEREST UPON DESTRUCTION	NUMBER OF VOTES
1	8	97	1690	1
2	8	90	1499	1
3	8	97	1640	1
4	8	98	1640	1
5	8	97	1640	1
6	8	97	1690	1
7	8	97	1690	1
8	8	97	1480	1
9	8	98	1640	1
10	8	97	1640	1
11	8	90	1400	1
12	8	97	1690	1
13	7	97	1670	1
14	7	90	1640	1
15	7	97	1640	1
16	7	98	1640	1
17	7	87	1640	1
18	7	97	1690	1
19	7	97	1640	1
20	7	98	1690	1
21	7	97	1480	1
22	7	98	1640	1
23	7	97	1640	1
24	7	90	1480	1
25	7	97	1670	1
26	8	98	1720	1
27	8	97	1690	1
28	8	98	1720	1
29	8	97	1690	1
30	8	90	1720	1
31	8	97	1610	1
32	8	98	1690	1
33	8	97	1690	1
34	8	90	1690	1
AGGREGATE		3213	64638	34

MATSON, PECK & TOPLISS
SURVEYORS AND ENGINEERS
210-8171 COOK ROAD
RICHMOND, B.C. V6Y 3T8
(ph) 270-8331
(fax) 270-4137

JOB NO. R - 11678

DATE 14/08/96 *JP* B.C.L.S.

DATE 14/08/96 *JP* B.C.L.S.