

P

RESTIGIOUSLY LOCATED IN THE

HEART OF VANCOUVER, PACIFIC PROMENADE PRESENTS THE ULTIMATE WEST COAST EXPERIENCE. HERE IS CITY LIVING AT ITS BEST.

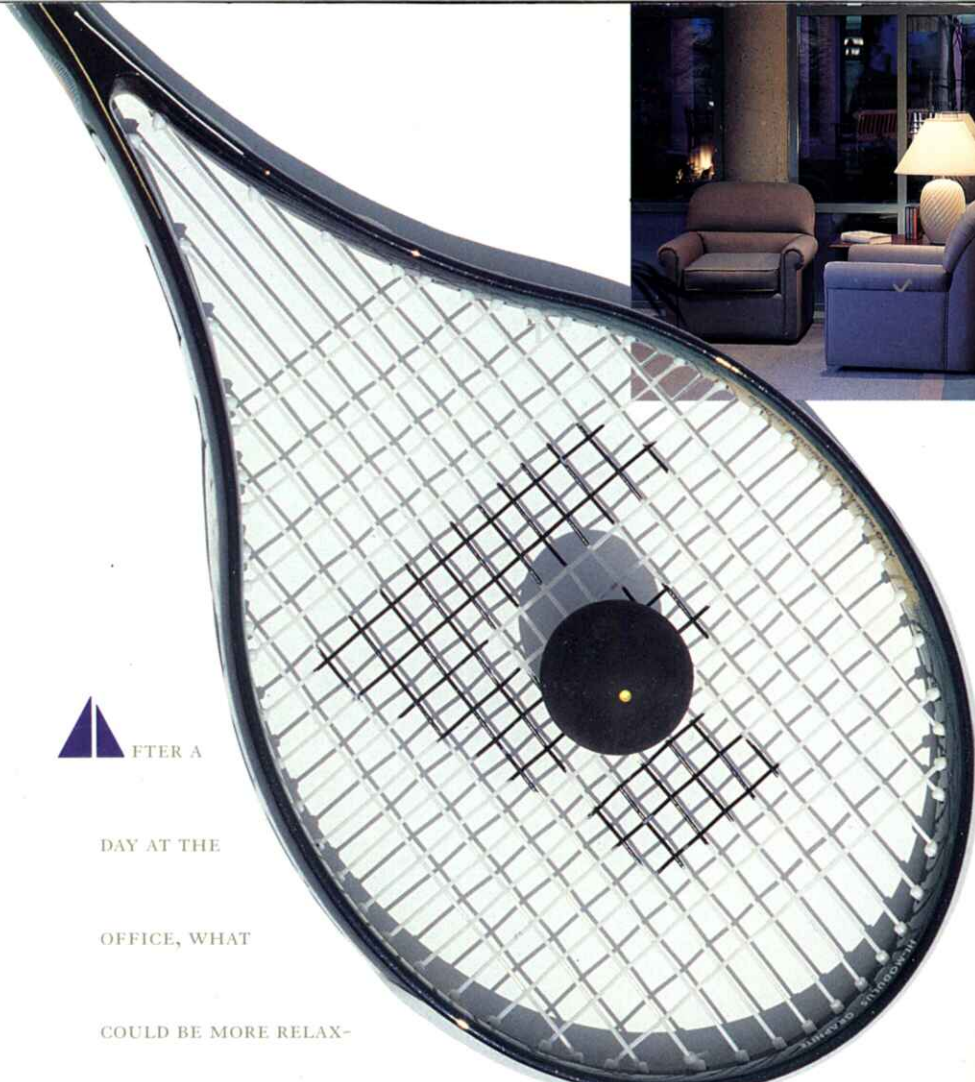
AT PACIFIC PROMENADE, YOU'LL FIND THE PERFECT SETTING FOR THOSE WHO PREFER AN ACTIVE LIFESTYLE. IDEALLY LOCATED ON



PACIFIC
PROMENADE
888 Pacific Avenue

THE NORTH SHORE OF FALSE CREEK ADJACENT TO THE FORMER EXPO LANDS, THIS UNIQUE RESIDENTIAL DEVELOPMENT FEATURES THE FINEST IN LEISURE AND SPORTING FACILITIES. YOUR LUXURIOUS HOME AT THE MOST SOUGHT-AFTER ADDRESS IN VANCOUVER, 888 PACIFIC AVENUE, IS SURROUNDED BY ALL THE AMENITIES OF QUALITY LIFE.





FTER A
DAY AT THE
OFFICE, WHAT
COULD BE MORE RELAX-
ING THAN A REFRESHING DIP IN THE SPACIOUS
INDOOR POOL, A VIGOROUS WORKOUT IN THE EXERCISE ROOM FOL-
LOWED BY A SOOTHING REST IN THE HOT TUB, STEAM ROOM OR
SAUNA. PERHAPS YOU'D LIKE TO CHALLENGE YOUR FRIENDS TO A
BRISK GAME ON YOUR OWN SQUASH COURT OR POLISH YOUR GOLFING
SKILLS ON YOUR OWN PUTTING GREEN. LATER IN THE EVENING,
HOW ABOUT A QUIET STROLL DOWN TO THE BEACH OR A RENDEZVOUS
WITH FRIENDS IN THE EXCLUSIVE SOCIAL LOUNGE. THIS AND MORE
COULD BE YOURS AT YOUR RESIDENTIAL RESORT BY THE BAY.



OME TO PACIFIC PROMENADE WHERE THE NAME SAYS IT ALL -
A GENTLE MEANDERING WALK, A STROLL TO THE GOOD LIFE OF
VANCOUVER. FROM YOUR HOME AT PACIFIC PROMENADE YOU CAN
AMBLE DOWN TO BEAUTIFUL ENGLISH BAY OR THE COLOURFUL



FASHION QUARTERS OF ROBSON STREET AND PACIFIC CENTRE.

JUST MINUTES AWAY, MODERN HIGH-RISES SIGNAL THE PULSE OF

VANCOUVER'S BUSINESS AND FINANCIAL DISTRICT. GRANVILLE

ISLAND'S FARMER'S MARKET FOR FRESH PRO-

DUCE IS ONLY A SHORT FERRY RIDE AWAY AND

UPTOWN, YOU'LL FIND SOUTH GRANVILLE'S

EXCLUSIVE SHOPPING AND FINE ART GAL-

LERIES. DEAL IN EVERY WAY, PACIFIC



PROMENADE SETS THE STAGE FOR ELEGANT LIVING. HERE, PRE-

SERVING AND ENHANCING THE BEAUTY OF ITS UNIQUE SETTING IS

AS IMPORTANT AS THE CRAFTSMANSHIP AND DESIGN OF THE ARCHI-

TECTURE ITSELF. FROM THE LUXURIOUS TOWER RESIDENCE WITH

ITS PANORAMIC VIEWS, TO THE EXCLUSIVE TOWN-

HOMES WITH SPACIOUS PATIOS AND THE TER-

RACE HOMES OPENING ONTO A LANDSCAPED

COURTYARD AND BALCONIES OVERLOOKING A

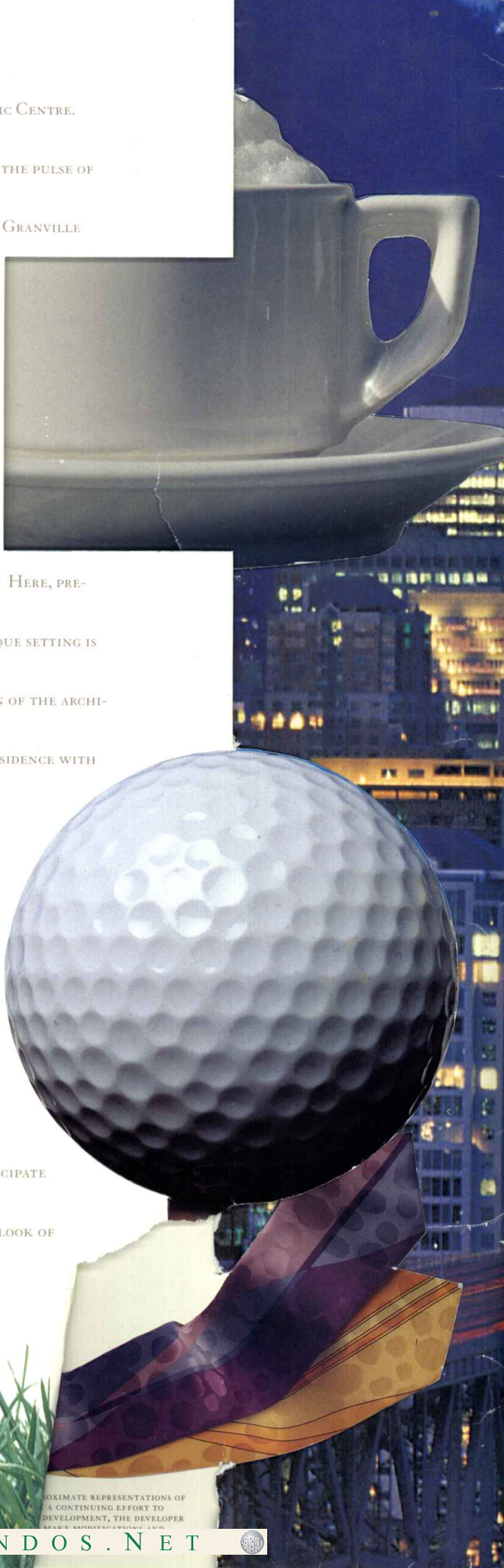
FUTURE CITY PARK, PACIFIC PROMENADE IS

YOUR GATEWAY TO A CAREFREE LIFE. FINELY



DETAILED INTERIORS HAVE BEEN DESIGNED TO ANTICIPATE

YOUR EVERY NEED. EVERYWHERE, THE SPIRIT AND LOOK OF



APPROXIMATE REPRESENTATIONS OF
A CONTINUING EFFORT TO
DEVELOPMENT, THE DEVELOPER
RESERVES THE RIGHT TO MAKE CHANGES WITHOUT NOTICE.



BCCONDOS.NET





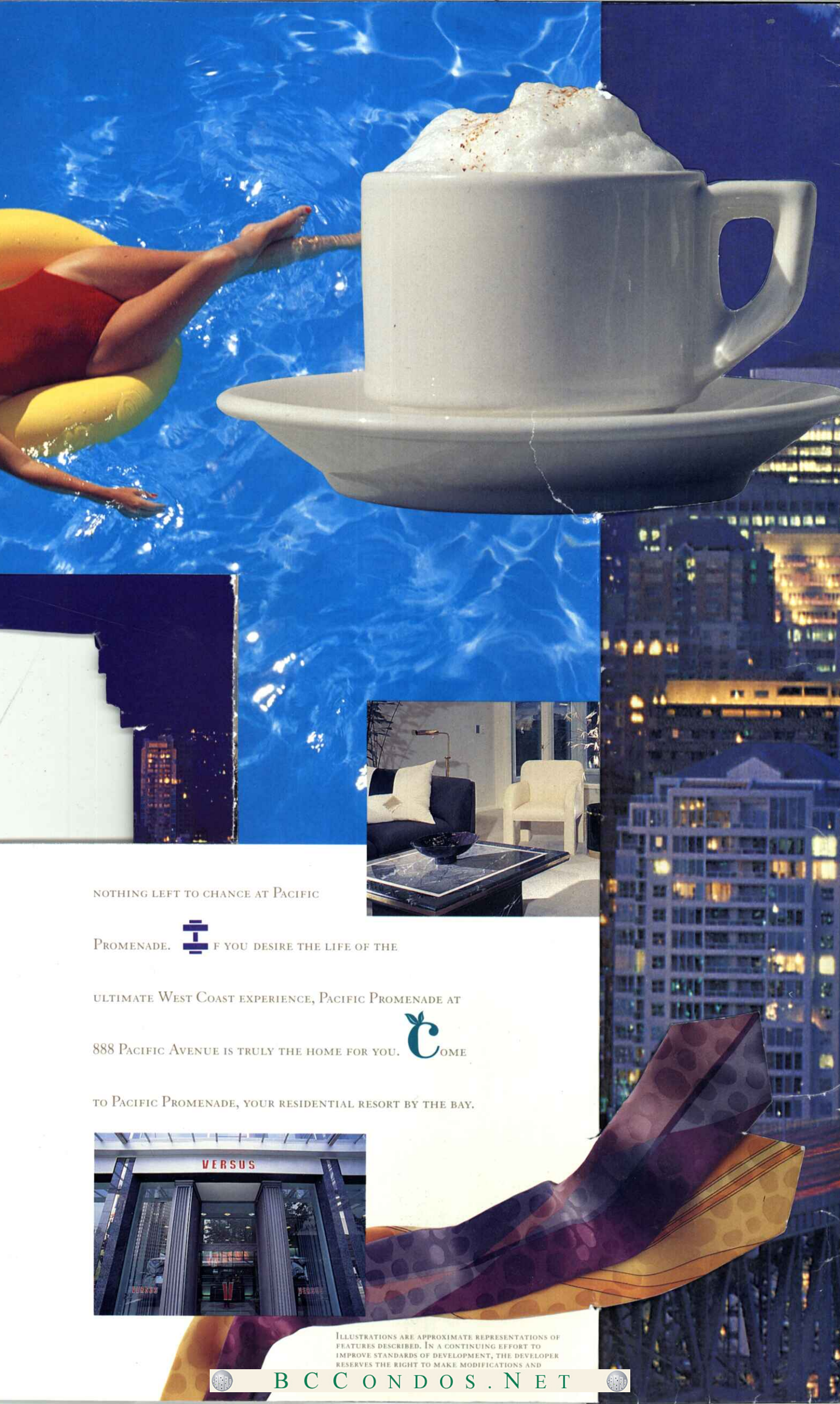
FTER A

DAY AT THE




COSMOPOLITAN LIFE HAS BEEN CAPTURED WITH
 ELEGANCE AND EFFICIENCY. FROM A BROAD
 DESIGNER SELECTION OF FLOORPLANS, TO CONTEM-
 PORAARY SCHEMES, ELEGANT IMPORTED TILES AND
 EUROPEAN STYLED KITCHEN CABINETS,

A GE
 VANC
 AMBLE



NOTHING LEFT TO CHANCE AT PACIFIC

PROMENADE.  IF YOU DESIRE THE LIFE OF THE

ULTIMATE WEST COAST EXPERIENCE, PACIFIC PROMENADE AT

888 PACIFIC AVENUE IS TRULY THE HOME FOR YOU.  COME

TO PACIFIC PROMENADE, YOUR RESIDENTIAL RESORT BY THE BAY.



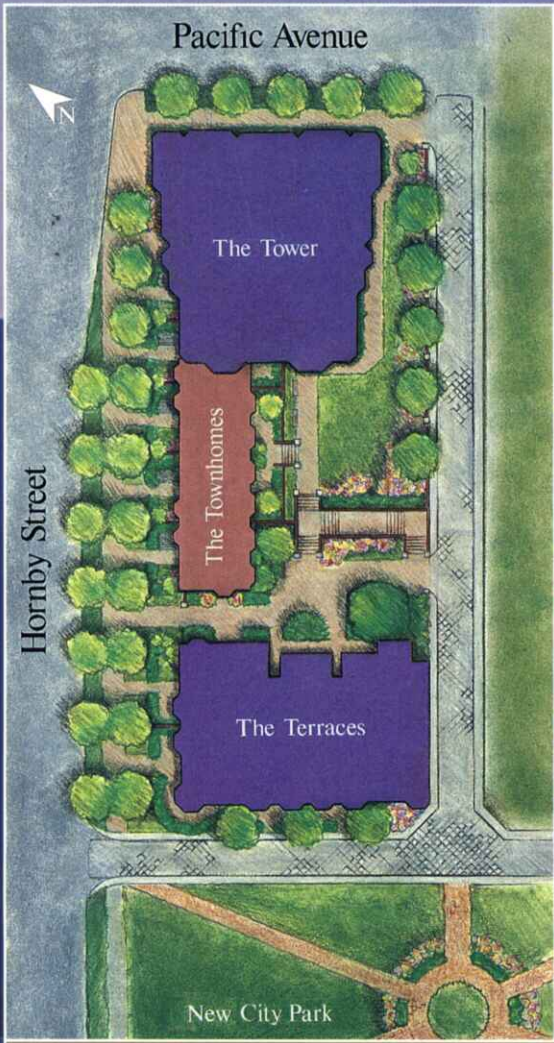
ILLUSTRATIONS ARE APPROXIMATE REPRESENTATIONS OF FEATURES DESCRIBED. IN A CONTINUING EFFORT TO IMPROVE STANDARDS OF DEVELOPMENT, THE DEVELOPER RESERVES THE RIGHT TO MAKE MODIFICATIONS AND



BCCONDOS.NET







**888 PACIFIC AVENUE
VANCOUVER, BC CANADA**

**DEVELOPER:
ERNEST & TWINS DEVELOPMENTS INC**

**ARCHITECT:
HAMILTON DOYLE ARCHITECTS**





The Tower



B C C O N D O S . N E T





PREMIERE FEATURES

GENERAL

- QUALITY CONCRETE CONSTRUCTION, FULLY SPRINKLERED
- LOW MAINTENANCE BRICK AND CURTAIN WALL GLASS EXTERIOR SYSTEM
- ELEGANT HIGH VOLUME MAIN ENTRANCE LOBBY WITH SECURITY SYSTEM INCLUDING TV SURVEILLANCE CAMERA
- VISITORS' CARPARK AND FULLY SECURED UNDERGROUND RESIDENT PARKING
- RESIDENT MANAGER SUITE AND OFFICE
- STORAGE LOCKERS AND BICYCLE STALLS
- COMPUTERIZED HIGH SPEED ELEVATORS

EXCLUSIVE RESIDENTS' CLUB FACILITIES

- INDOOR SWIMMING POOL
- HOT-TUB, SAUNA, STEAM ROOM AND CHANGING ROOMS
- HIGH-VOLUME EXERCISE ROOM
- SQUASH COURT AND LOUNGE
- HIGH-VOLUME MEETING ROOM WITH KITCHEN FACILITY
- FULLY LANDSCAPED COURTYARD WITH PUTTING GREEN

INTERIOR DETAIL

- FLOOR TO CEILING DOUBLE-GLAZED WINDOWS AND PATIO DOORS
- CUSTOM WINDOW BLINDS
- SECURITY INTERCOM TO ENSURE UPMOST PRIVACY AND SECURITY
- DESIGNER SELECTED MATERIALS THROUGHOUT WITH 2 COLOUR SCHEMES
- UPGRADE FINISHES AND APPLIANCES FEATURED IN PENTHOUSES AND TOWNHOMES
- LUXURY 40 OZ CARPET
- EXTRA SOUND PROOFING AND INSULATION
- IN-SUITE STORAGE ROOM IN MOST SUITES

BATHROOM AND KITCHEN

- KOHLER FIXTURES
- ELEGANT IMPORTED TILE FLOORS WITH CERAMIC ACCENT TILES
- FINELY CRAFTED EUROPEAN-STYLE CABINETS
- DOUBLE KITCHEN SINK WITH GARBURATOR
- GENERAL ELECTRIC OR EQUIVALENT SELF-CLEANING RANGE AND HOOD
- GENERAL ELECTRIC OR EQUIVALENT FROST-FREE REFRIGERATOR
- GENERAL ELECTRIC OR EQUIVALENT DELUXE DISHWASHER
- PROVISIONS FOR LAUNDRY

THE TOWER BUILDING

- *Two-level penthouses have upgraded finish and two parking stalls. Some units have large outdoor terraces on both levels.*
- *Panoramic view of English Bay, False Creek or North Shore Mountains for many units.*





太平洋道 888號 優點特多 不同凡響

公用設施 應有盡有

- 全部高質鋼筋水泥建造，遍裝消防洒水系統
- 玻璃幕與磚砌外牆，美觀實用，易於保養。
- 華麗入口大堂，樓面高達二層，裝有閉路電視等保安設備，確保出入平安。
- 住客地下停車場保安嚴密，附設訪客停車場。
- 住宿經理套間與辦公室。
- 上鎖貯物室及單車停放處。
- 高速電腦控制電梯快捷安全。

會所式康樂設備 住戶專用

- 室內暖水泳池。
- 按摩池、桑拿室、蒸汽室及更衣室。
- 特高樓底健身室。
- 壁球室與休息室。
- 特高樓底會議室，附有廚房。
- 花園布置精巧，遍植蒔花，並附設高爾夫球練習場。

室內裝置 齊備完美

- 落地雙層玻璃窗及露台門。
- 預裝精美富貴簾。
- 對講機確保安全。
- 兩系列色調之裝修風格任君選擇。
- 全部頂樓及城市屋單位採用特級優質裝修。
- 舖40安士之名貴地氈。
- 加強之隔音與保溫設施。
- 多數單位內有貯物室。

廚房浴室 實用名貴

- 採用名牌Kohler潔具。
- 舖精美進口瓷磚。
- 歐式廚櫃雅緻精細。
- 雙洗碗盤，內置化渣機。
- 通用牌（或同級之）自潔型焗爐及抽油煙機。
- 通用牌（或同級之）無霜雪櫃
- 通用牌（或同級之）豪華洗碗機。
- 預留空間及喉位供安置洗衣機與乾衣機之用。

高層大廈

- 複式頂樓單位採用特級優質裝修，每一頂樓單位附送兩個車位。部份複式單位更有特大露台。
- 溫哥華名勝如英吉利灣、假溪和北岸群山的美景，盡收眼底。



B C C O N D O S . N E T





The Terrace & The Townhome



B C C O N D O S . N E T



6



太平洋道 888號 優點特多 不同凡響

公用設施 應有盡有

- 全部高質鋼筋水泥建造，遍裝消防洒水系統
- 玻璃幕與磚砌外牆，美觀實用，易於保養。
- 華麗入口大堂，樓面高達二層，裝有閉路電視等保安設備，確保出入平安。
- 住客地下停車場保安嚴密，附設訪客停車場。
- 住宿經理套間與辦公室。
- 上鎖貯物室及單車停放處。
- 高速電腦控制電梯快捷安全。

會所式康樂設備 住戶專用

- 室內暖水泳池。
- 按摩池、桑拿室、蒸汽室及更衣室。
- 特高樓底健身室。
- 壁球室與休息室。
- 特高樓底會議室，附有廚房。
- 花園布置精巧，遍植蔴花，並附設高爾夫球練習場。

室內裝置 齊備完美

- 落地雙層玻璃窗及露台門。
- 預裝精美富貴簾。
- 對講機確保安全。
- 兩系列色調之裝修風格任君選擇。
- 全部頂樓及城市屋單位採用特級優質裝修。
- 舖40安士之名貴地氈。
- 加強之隔音與保溫設施。
- 多數單位內有貯物室。

廚房浴室 實用名貴

- 採用名牌Kohler潔具。
- 舖精美進口瓷磚。
- 歐式廚櫃雅緻精細。
- 雙洗碗盤，內置化渣機。
- 通用牌（或同級之）自潔型焗爐及抽油煙機。
- 通用牌（或同級之）無霜雪櫃
- 通用牌（或同級之）豪華洗碗機。
- 預留空間及喉位供安置洗衣機與乾衣機之用。

公園建築

- 有蓋走廊貫通全層，確保各單位空氣清新通爽。
- 地面單位有兩通道，可經由有蓋走廊或花園小徑進出。
- 多數單位有平台或露台，可俯瞰未來公園美景。
- 頂樓單位戶外平台特別寬敞，該類單位採用特級優質裝修，每單位更附送兩個車位。

城市屋

- 所有城市屋採用特級優質裝修，每單位均附送兩個車位。
- 每一城市屋均有獨立大門，通往 Hornby Street，門旁更有私人露台供住客專用。
- D型城市屋單位附有天台。





PREMIERE FEATURES

GENERAL

- QUALITY CONCRETE CONSTRUCTION, FULLY SPRINKLERED
- LOW MAINTENANCE BRICK AND CURTAIN WALL GLASS EXTERIOR SYSTEM
- ELEGANT HIGH VOLUME MAIN ENTRANCE LOBBY WITH SECURITY SYSTEM INCLUDING TV SURVEILLANCE CAMERA
- VISITORS' CARPARK AND FULLY SECURED UNDERGROUND RESIDENT PARKING
- RESIDENT MANAGER SUITE AND OFFICE
- STORAGE LOCKERS AND BICYCLE STALLS
- COMPUTERIZED HIGH SPEED ELEVATOR

EXCLUSIVE RESIDENTS' CLUB FACILITIES

- INDOOR SWIMMING POOL
- HOT-TUB, SAUNA, STEAM ROOM AND CHANGING ROOMS
- HIGH-VOLUME EXERCISE ROOM
- SQUASH COURT AND LOUNGE
- HIGH-VOLUME MEETING ROOM WITH KITCHEN FACILITY
- FULLY LANDSCAPED COURTYARD WITH PUTTING GREEN

INTERIOR DETAIL

- FLOOR TO CEILING DOUBLE-GLAZED WINDOWS AND PATIO DOORS
- CUSTOM WINDOW BLINDS
- SECURITY INTERCOM TO ENSURE UPMOST PRIVACY AND SECURITY
- DESIGNER SELECTED MATERIALS THROUGHOUT WITH 2 COLOUR SCHEMES
- UPGRADE FINISHES AND APPLIANCES FEATURED IN PENTHOUSES AND TOWNHOMES
- LUXURY 40 OZ CARPET
- EXTRA SOUND PROOFING AND INSULATION
- IN-SUITE STORAGE ROOM IN MOST SUITES

BATHROOM AND KITCHEN

- KOHLER FIXTURES
- ELEGANT IMPORTED TILE FLOORS WITH CERAMIC ACCENT TILES
- FINELY CRAFTED EUROPEAN-STYLE CABINETS
- DOUBLE KITCHEN SINK WITH GARBURATOR
- GENERAL ELECTRIC OR EQUIVALENT SELF-CLEANING RANGE AND HOOD
- GENERAL ELECTRIC OR EQUIVALENT FROST-FREE REFRIGERATOR
- GENERAL ELECTRIC OR EQUIVALENT DELUXE DISHWASHER
- PROVISIONS FOR LAUNDRY

THE TERRACES

- *Suite access is provided via an elevator and exterior corridor, thus allowing for through suite air flow circulation.*
- *Ground floor suites have entry from both the exterior corridor and off the landscaped lane and future public park to the south.*
- *All units have a balcony or terrace overlooking the future city park.*
- *Penthouse units have substantial outdoor terraces, as well as an upgraded finish package and two parking stalls.*

THE TOWNHOMES

- *All townhomes have an upgraded finish and two parking stalls.*
- *Each townhome has a patio beside the individual entry from Hornby Street.*
- *The two D style townhomes have roof-top terraces.*



BCCONDOS.NET

