

# AMENITIES SECOND TO NONE

## *First Impressions*

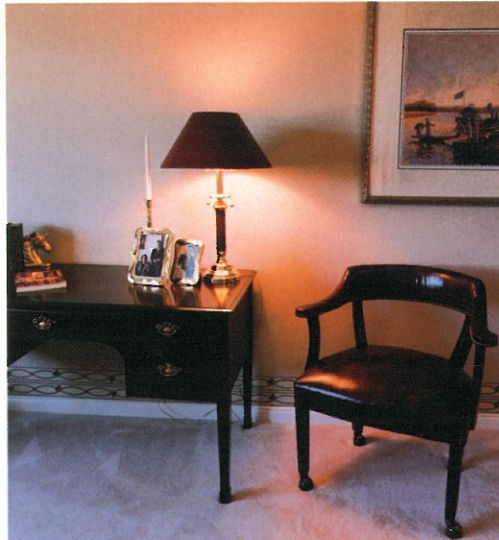
- ❖ Outstanding traditional architecture
- ❖ Richly appointed furnished lobby with hand-set tile
- ❖ Polished brass entry hardware
- ❖ Heritage-style raised panel front door
- ❖ Elegant marble suite entry

## *Fine Living Features*

- ❖ Gas fireplace with marble surround and hearth
- ❖ Custom designed wood mantle
- ❖ Heritage-style interior doors
- ❖ Enamel and brass finish Athena door hardware by Weiser
- ❖ Plush nylon carpeting
- ❖ Solid wood baseboards
- ❖ Decora rocker light switches
- ❖ 10 ft. high living room ceilings (penthouse level)
- ❖ Horizontal mini-blinds
- ❖ Vertical blinds on sliding doors
- ❖ Master bedroom walk-in closet
- ❖ Electric heating with individual room thermostats
- ❖ Double-glazed windows
- ❖ Balcony or patio for outdoor living

## *Beautiful Bathrooms*

- ❖ Oval soaker tub with imported ceramic tile surround



- ❖ Oversized shower stall in second bathroom with double shower heads (some plans)
- ❖ Cultured granite counter-top and sink in master ensuite
- ❖ Full-width vanity mirror
- ❖ Polished brass and chrome faucets
- ❖ Low profile toilets by Eljer
- ❖ Cosmetic light bar above vanity

## *Step-Saver Kitchen*

- ❖ Halogen track lighting
- ❖ Task light over sink
- ❖ European-style white laminate cabinets
- ❖ Time-saving cabinet features (roll-out pot drawer, wine rack, and microwave shelf)
- ❖ Energy-saving dishwasher by White Westinghouse
- ❖ Energy-efficient 17 cu. ft. automatic defrost refrigerator by White Westinghouse

- ❖ Self-cleaning range by White Westinghouse
- ❖ 1/3 h.p. garbage disposal
- ❖ Double stainless steel kitchen sink
- ❖ Vegetable spray
- ❖ Decorative light fixture in breakfast nook (some plans)
- ❖ Easy-to-clean vinyl flooring

## *Thoughtfully Planned*

- ❖ Pre-wiring for alarm system (full alarm system in ground-level suites)
- ❖ Acoustic construction, between floors
- ❖ Secure underground parking
- ❖ Freeze-frame video surveillance cameras at garage entry and lobby
- ❖ Remote control parking entry
- ❖ Enterphone at main lobby
- ❖ Pre-wired television outlets
- ❖ Pre-wired telephone jacks

## *Amenities and Service*

- ❖ Fully-equipped fitness studio
- ❖ Storage lockers
- ❖ Two custom elevators

## *Options to Enhance Your Living Pleasure*

- ❖ Security system (other floors)
- ❖ Appliance package (washer/dryer, microwave)

