

THE
PINNACLE



BCCONDOS.NET



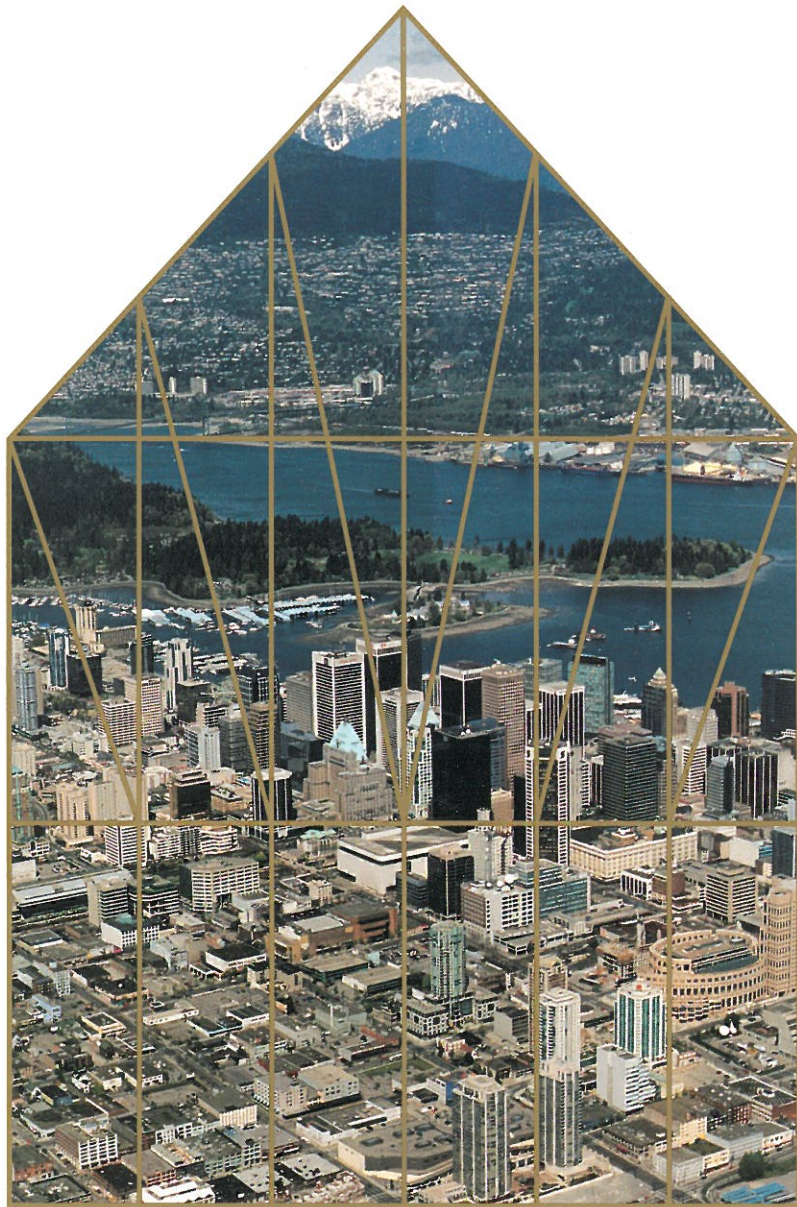


With the Coliseum-
inspired public
library, the world-
class Ford Center

For The Performing Arts, and
GM Place, Canada's newest
state-of-the-art NBA/NHL
sports venue, a dynamic new
Vancouver emerges at the
very heart of the city: vibrant,
downtown, cosmopolitan.
Towering above this
spectacular new Vancouver
landscape is THE PINNACLE,
a dazzling residential
landmark. *As your home*, it
is the zenith of affordable
luxury, a quantum advance in
the sophisticated city
residence. *As your investment*,
it is without parallel, a
brilliant wonder rising from
the center of the city's most
desired location. No address
could be more felicitously
named. It is THE PINNACLE.



THE ULTIMATE ATTAINMENT IS...

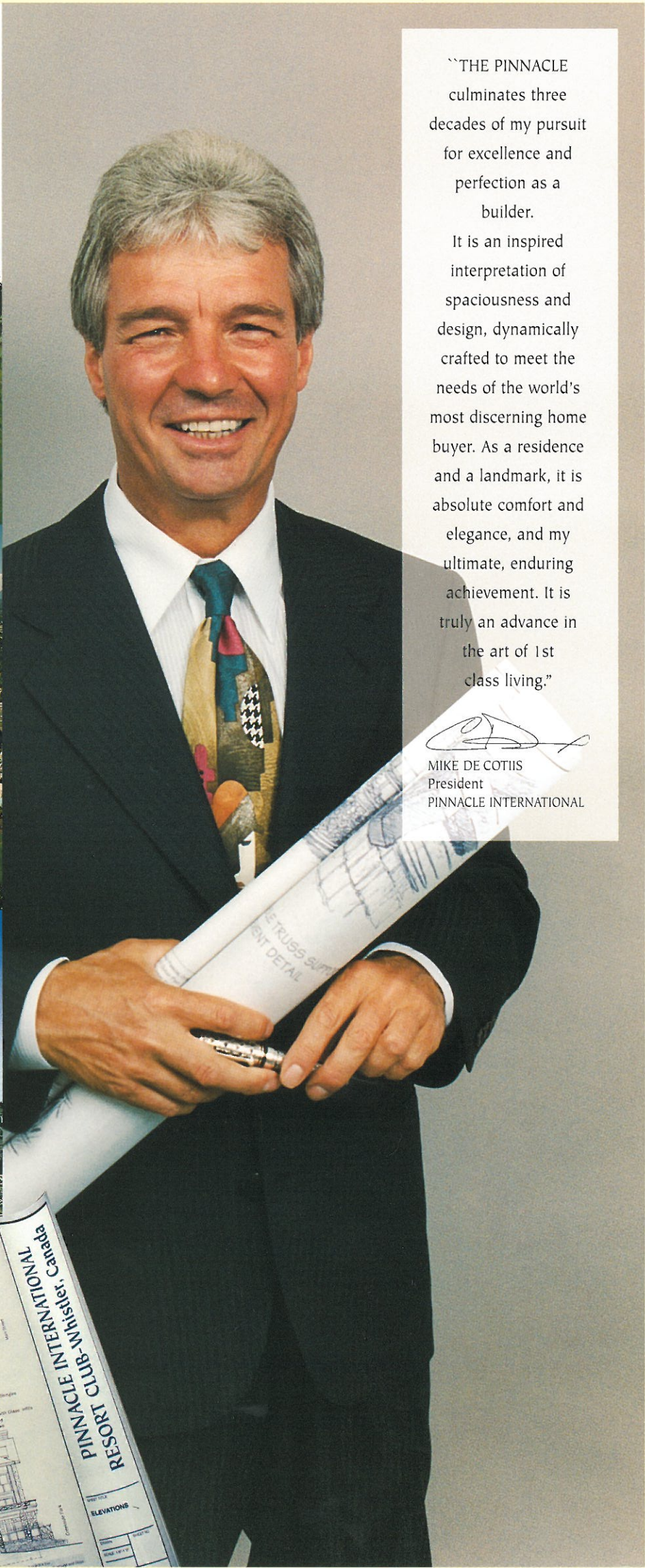
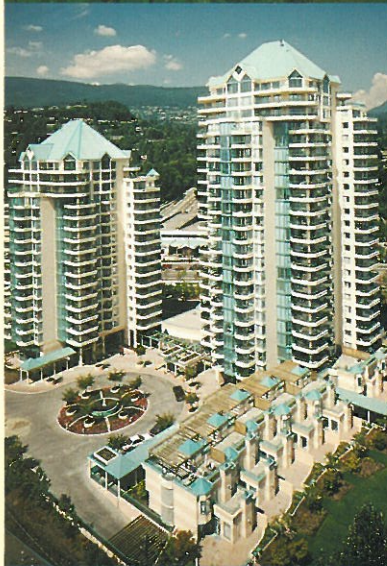


THE
PINNACLE



BCCONDOS.NET

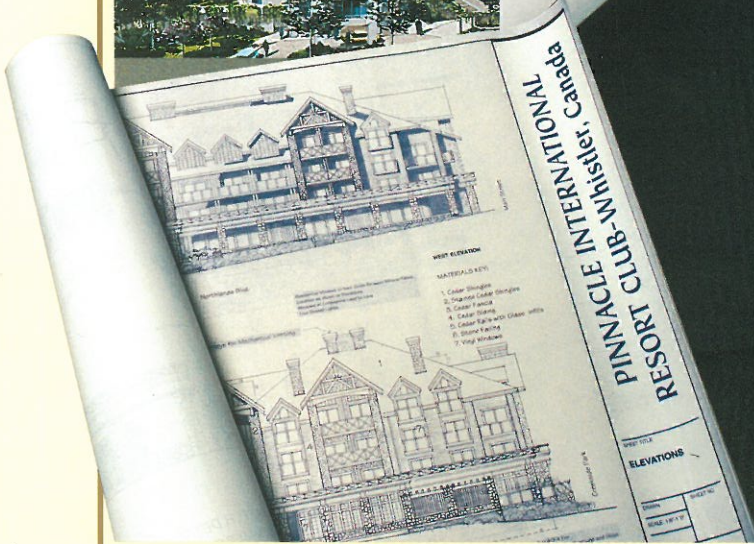




“THE PINNACLE
culminates three
decades of my pursuit
for excellence and
perfection as a
builder.

It is an inspired
interpretation of
spaciousness and
design, dynamically
crafted to meet the
needs of the world's
most discerning home
buyer. As a residence
and a landmark, it is
absolute comfort and
elegance, and my
ultimate, enduring
achievement. It is
truly an advance in
the art of 1st
class living.”


MIKE DE COTIIS
President
PINNACLE INTERNATIONAL

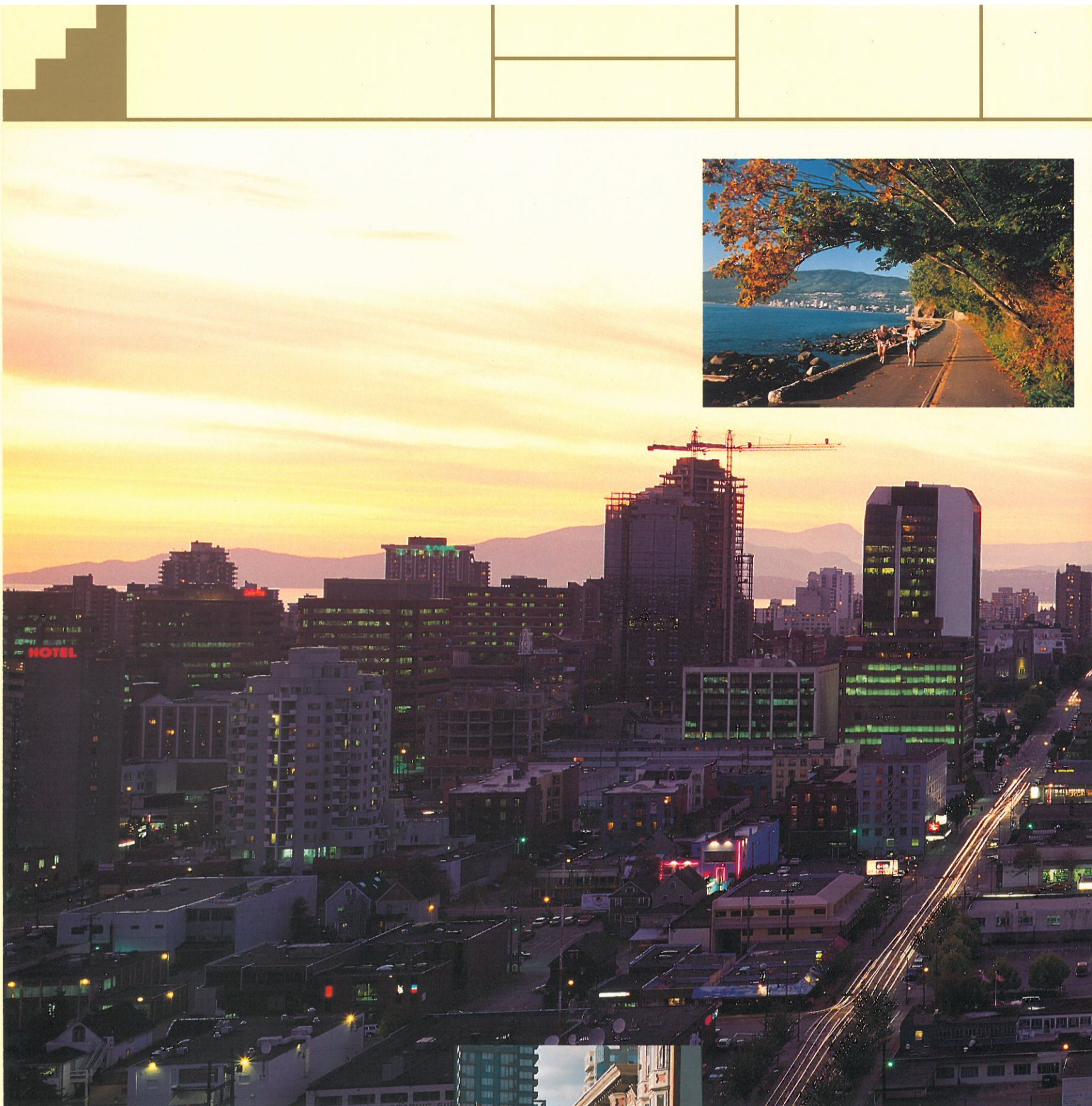




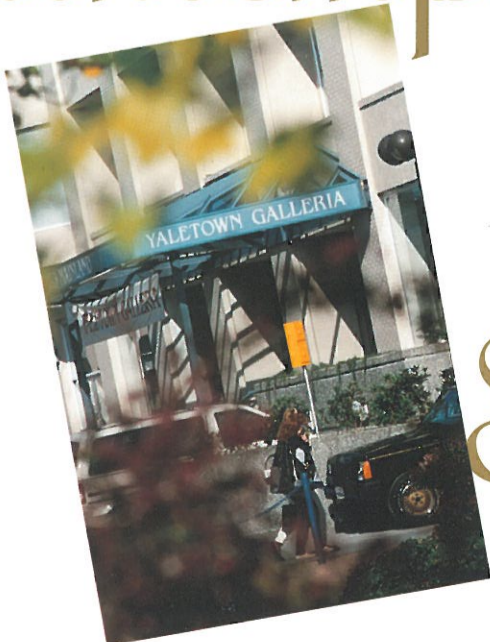
THE PINNACLE RESIDENCE, VANCOUVER

BCCONDOS.NET





Printemps



Summer



You're swept up into a new view of Vancouver. THE PINNACLE sparkles over the city's new cultural and entertainment center, amidst a landscape of theatres, sports domes and downtown amenities. A stroll in any direction and you happen upon fabulous restaurants. Nearby, you will discover your own personal Yaletown hideaways, Robson Street shopping pleasures, and the glorious bustle of the Georgia Street malls.



BCCONDOS.NET



Ford Theatre

Queen Elizabeth Theatre

THE PINNACLE OF THE NEW VANCOUVER



STANLEY PARK

SEAWALL PROMENADE



COAL HARBOUR

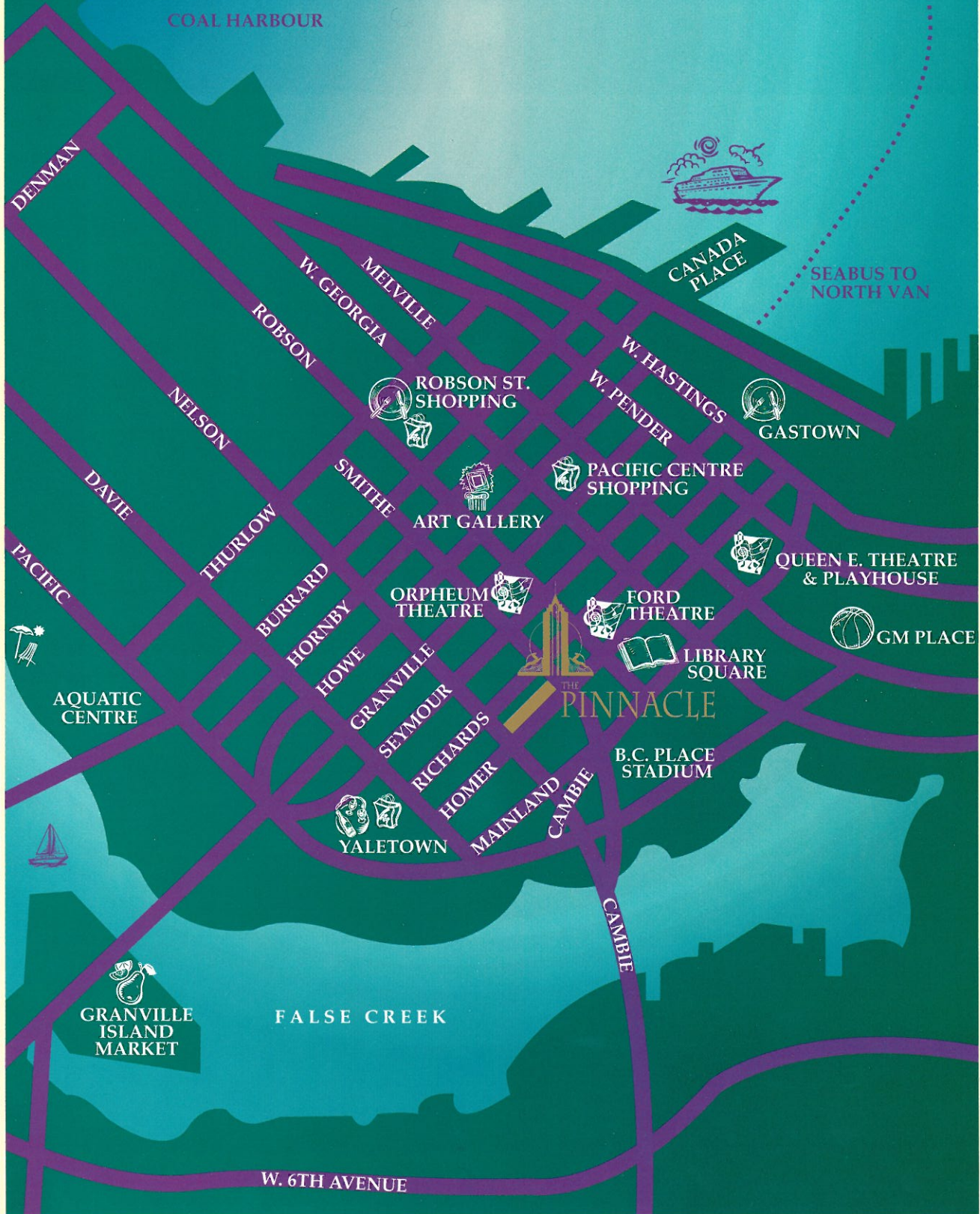


CANADA PLACE

SEABUS TO NORTH VAN

Canada's Royal Ballet

Orpheum Theatre



Vancouver Opera

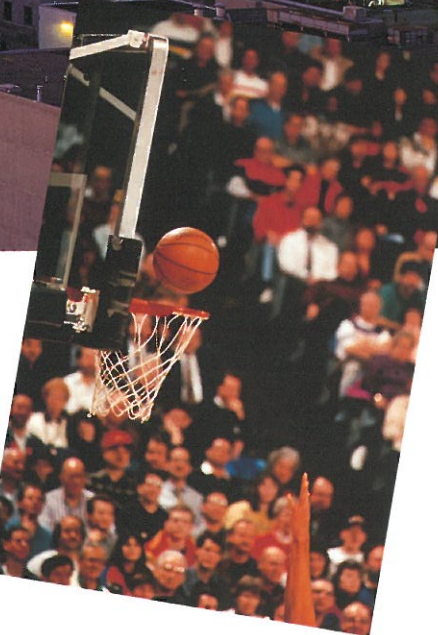
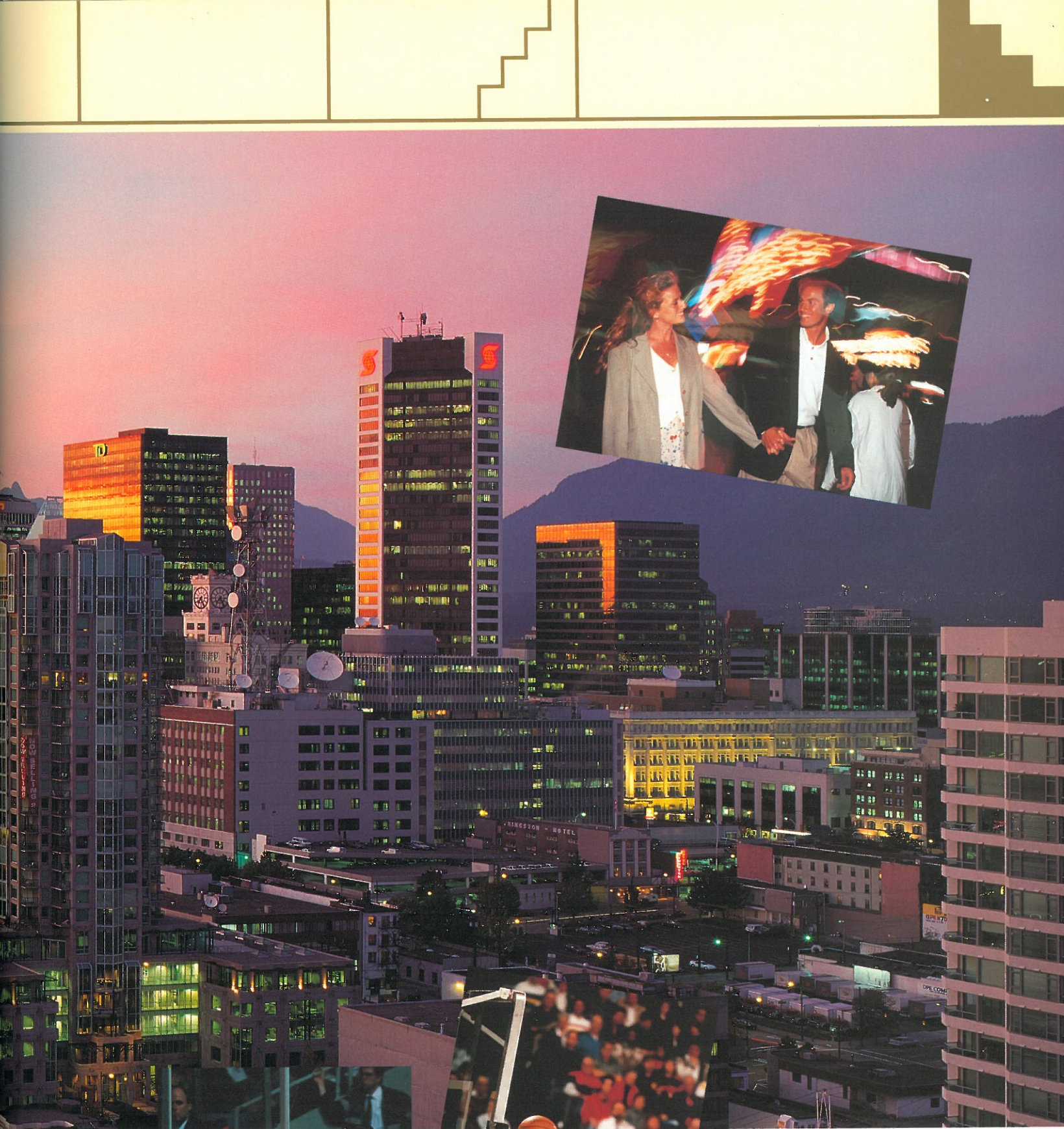
Vancouver Playhouse

Vancouver Symphony



BCCONDOS.NET





Your residence offers you a thrilling insider's view of the towering downtown cityscape... the stunning new library, spectacular sunsets over English Bay, the city set against the North Shore mountains. For the urbane, discriminating home buyer who loves city life, it is simply THE PINNACLE.

Fliver

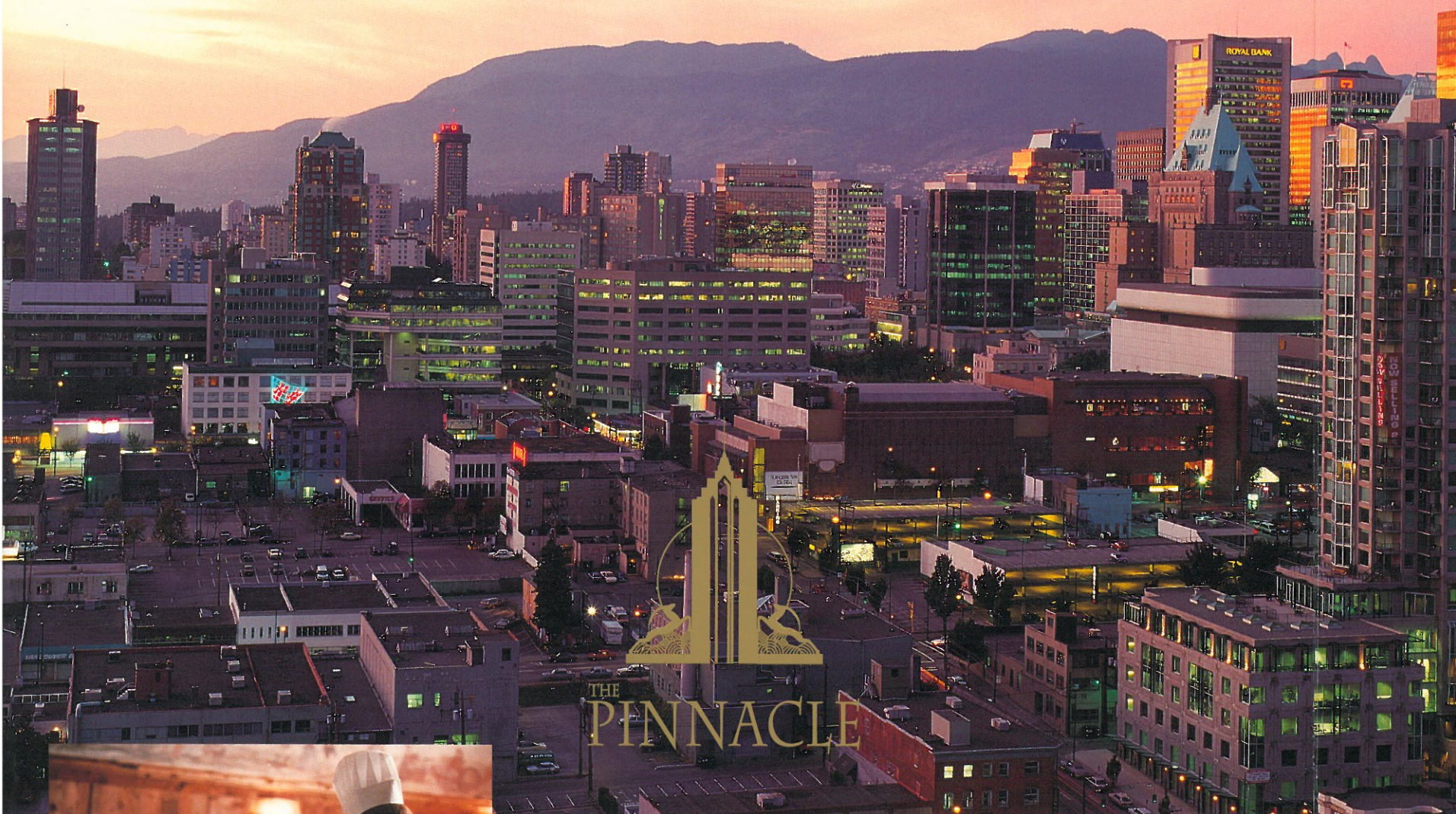
Fall

Spring



BCCONDOS.NET





THE
PINNACLE



Winter

Autumn

Été



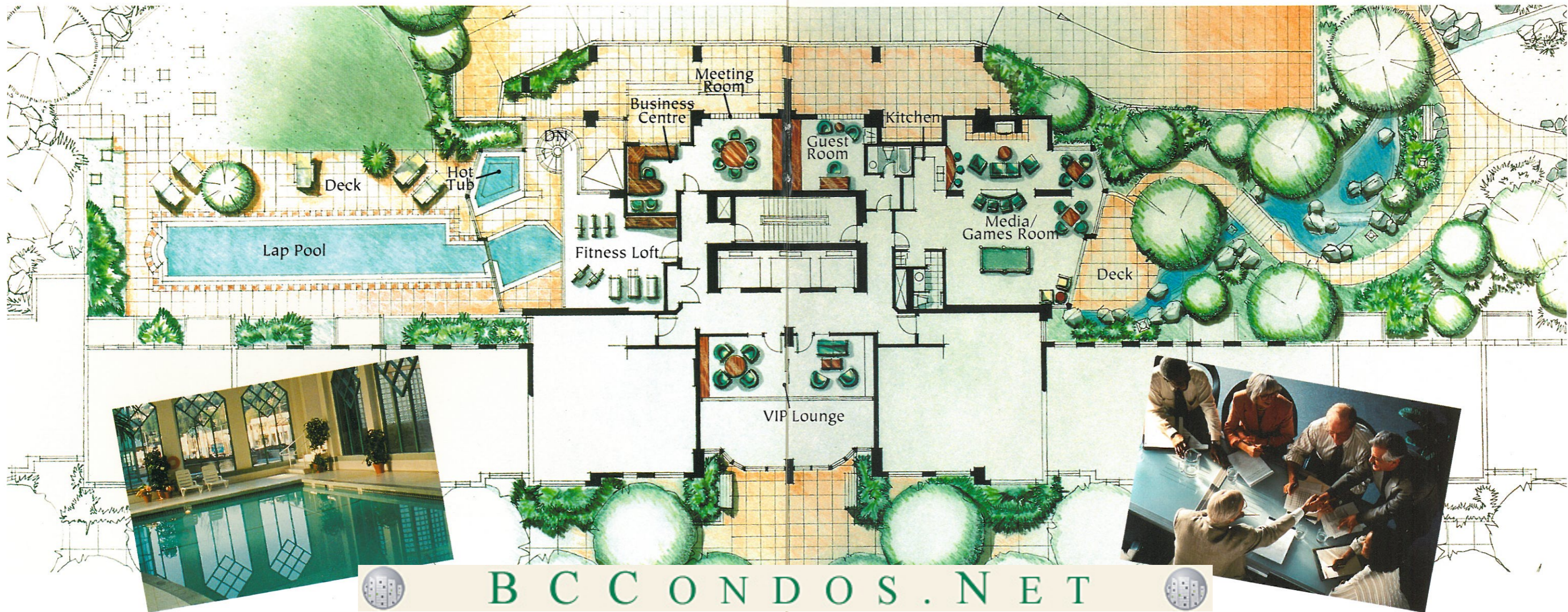
It's a lifestyle that's unabashedly downtown. The movies, Broadway musicals, operas, the symphony, concerts, the art gallery and Vancouver's own lively arts scene, THE PINNACLE puts you at the center of a cosmopolitan's paradise. Best of all, you don't have to leave home to be entertained for only THE PINNACLE offers you L'Apex, one of the city's great private residents' clubs.



BCCONDOS.NET



FOR THE FORTUNATE FEW ...L'APEX AT THE PINNACLE



B C C O N D O S . N E T



**SPACIOUS, COSMOPOLITAN, ELEGANT: the residences of
THE PINNACLE redefine life in the new Vancouver.**

AN ENDURING LANDMARK

- State-of-the-art architectural design
- Concrete and glass construction
- Private, secured underground parking
- Automatic fire sprinkler system in every residence
- Spectacularly landscaped private gardens
- Energy efficient building design
- Concierge/resident manager
- Individual bicycle/storage area
- Fiber-optic technology
- Video security
- 3 high speed, secured elevators
- Full facility, private residents' club

AN EXTRAORDINARY RESIDENCE

- Solid front door with polished brass locks
- Elegant marble/hardwood foyer entry
- Plush/Berber carpet
- Slim profile Venetian blinds
- Gas fireplace in every suite
- Designer kitchen cabinets
- Double sink with vegetable sprayer
- Built-in garburator
- Multi-cycle dishwasher
- Deluxe refrigerator
- Built-in microwave
- Efficient range with self cleaning oven
- Multi-cycle washer/dryer
- In-suite storage
- Deluxe bathrooms with premium fixtures and faucets.



Standard of this project, the builder reserves the right to modify plans, approximate and may vary with actual strata plan and survey.



B C C O N D O S . N E T





THE PINNACLE offers its discriminating home buyers superb amenities. L'Apex, the stylish private residents' club at THE PINNACLE, is a world-class recreation and club facility. Its third-floor location opens to sunlight and landscaped gardens. The fitness gym is fully equipped; club rooms offer billiards and big-screen television with private viewing; the facility provides private meeting rooms, a business center, a guest suite, library and VIP lounge. On the patio level are saunas, a hot spa, and a magnificent, brilliantly-conceived

indoor/outdoor lap pool which opens to the gardens. L'Apex characterizes the creativity and quality you will discover in all finish and detail throughout THE PINNACLE. This towering landmark and elegant address redefines the urban residence in the new Vancouver.



THE
PINNACLE



In the interest of product improvement and maintaining the high standards of quality, we reserve the right to change specifications and features. Sizes and dimensions are approximate.



BCCONDOS.NET



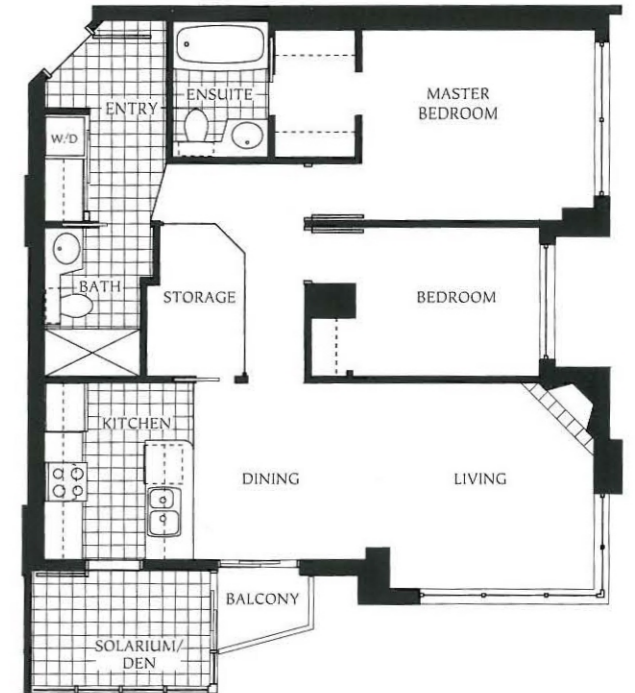
THE PINNACLE IS THE ULTIMATE RESIDENTIAL ACHIEVEMENT



STUDIO I
454 sq. ft.



STUDIO II
448 sq. ft.



890 sq. ft.



B C C O N D O S . N E T





THE
PINNACLE

939 Homer Street
Vancouver, British Columbia

Developed by:
Pinnacle International

Exclusive Marketing Agent:
Anson Realty
3396 Cambie Street
Vancouver, British Columbia
Tel: (604) 876-9222
Fax: (604) 876-9225

Printed in Canada
Designed by Outline Graphic Design Inc.



B C C O N D O S . N E T

