

**STRATA PLAN OF
LOT A, SECTION 32, TOWNSHIP 2,
N.W.D., PLAN BCP19110**

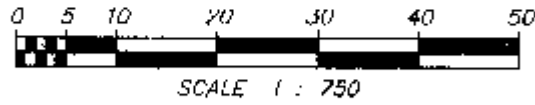
STRATA PLAN BCS 2117

DEPOSITED AND REGISTERED IN THE LAND TITLE
OFFICE AT NEW WESTMINSTER, B.C.
THIS 27 DAY OF NOV, 2006

B.C.G.S. 92G.016

CITY OF SURREY

DEPUTY REGISTRAR



(SA) 576 386 - 477

LEGEND

- ⊙ DENOTES CONTROL MONUMENT FOUND
- DENOTES STANDARD IRON POST FOUND
- S.L. DENOTES STRATA LOT
- PT. DENOTES PART
- ⊕ DENOTES COMMON PROPERTY
- m² DENOTES SQUARE METRES
- A DENOTES AREA
- T DENOTES TOTAL
- ⊖ DENOTES BALCONY
- ⊗ DENOTES PAVES

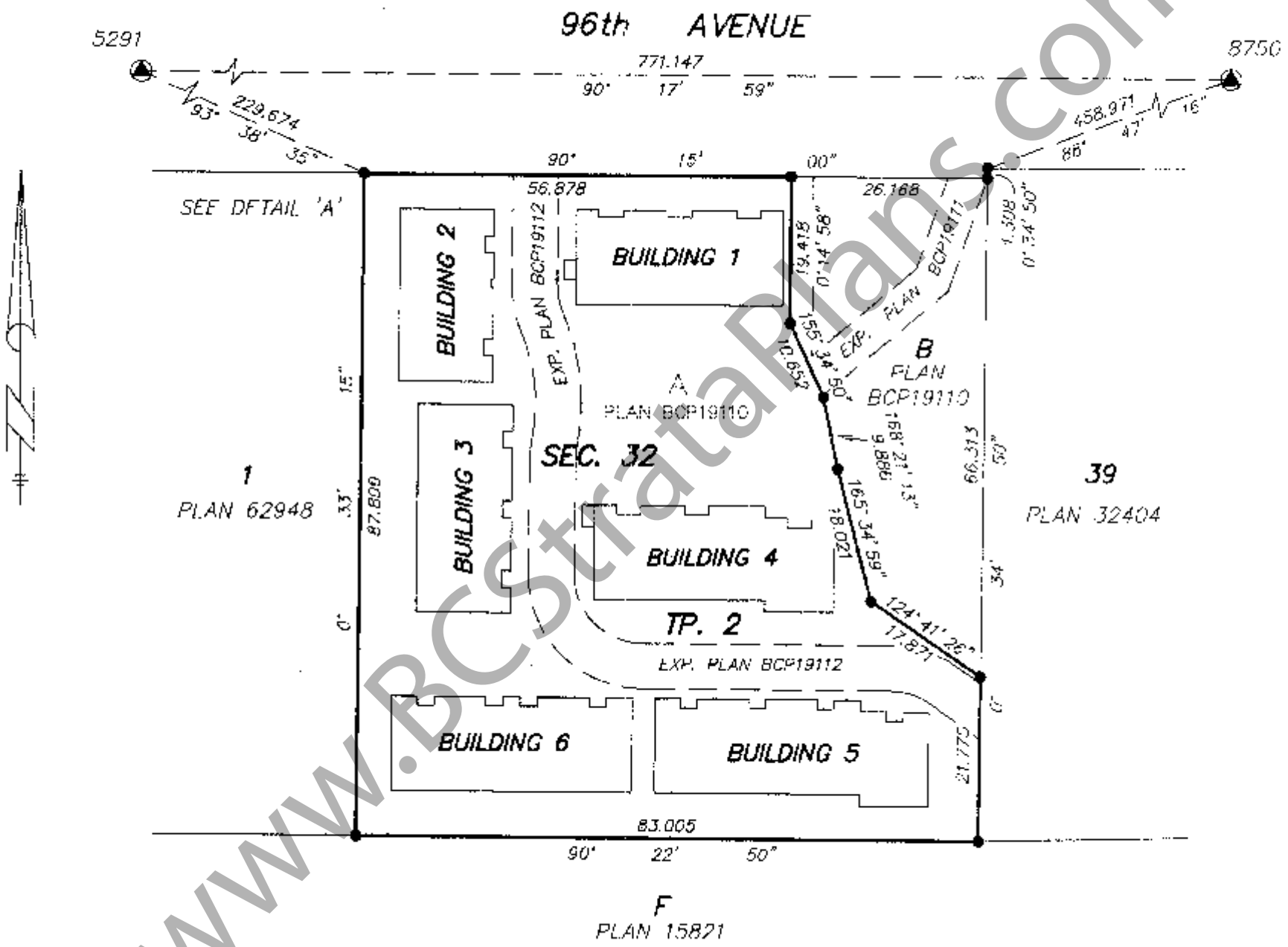
INTEGRATED SURVEY AREA No. 1 (SURREY)

THIS PLAN SHOWS GROUND LEVEL MEASURED DISTANCES.
PRIOR TO COMPUTATION OF U.T.M. COORDINATES MULTIPLY
BY COMBINED FACTOR OF 0.9995936

GRID BEARINGS ARE (NAD83 CSRS) DERIVED
FROM PLAN BCP11910

LCP5 DENOTES LIMITED COMMON PROPERTY
(TYPICAL) FOR EXCLUSIVE USE OF STRATA LOT 5

ALL DISTANCES ARE IN METRES



I, CHRISTOPHER J. JAMES, A BRITISH COLUMBIA
LAND SURVEYOR, OF SURREY, CERTIFY THAT
THE BUILDING INCLUDED IN THIS STRATA PLAN
HAS NOT, AS OF THE 20th DAY OF OCTOBER, 2006
BEEN PREVIOUSLY OCCUPIED.
DATED THIS 20th DAY OF OCTOBER, 2006.

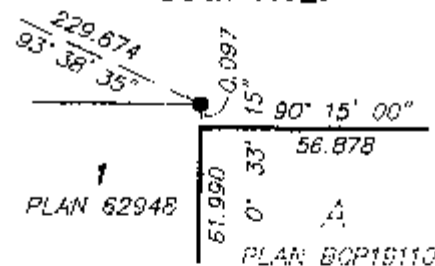
[Signature]
B.C.L.S.

I, CHRISTOPHER J. JAMES, A BRITISH COLUMBIA LAND
SURVEYOR OF SURREY IN BRITISH COLUMBIA, CERTIFY
THAT I WAS PRESENT AT AND PERSONALLY SUPERINTENDED
THE SURVEY REPRESENTED BY THIS PLAN AND THAT THE
SURVEY AND PLAN ARE CORRECT. THE FIELD SURVEY WAS
COMPLETED ON THE 20th DAY OF OCTOBER, 2006.

THE PLAN WAS COMPLETED AND CHECKED, AND THE CHECKLIST
FILED UNDER #55909, ON THE 20th DAY OF OCTOBER, 2006.

[Signature]
B.C.L.S.

96th AVE.



DETAIL 'A'
NOT TO SCALE

I, CHRISTOPHER J. JAMES, A BRITISH COLUMBIA
LAND SURVEYOR, OF SURREY, CERTIFY THAT
THE BUILDING SHOWN ON THIS STRATA PLAN
IS WITHIN THE EXTERNAL BOUNDARIES OF
THE LAND THAT IS THE SUBJECT OF THE
STRATA PLAN.
DATED THIS 20th DAY OF OCTOBER, 2006.

[Signature]
B.C.L.S.

CIVIC ADDRESS OF PROPERTY
13526 - 96th AVENUE
SURREY, B.C.

CHRISTOPHER J. JAMES
B.C. LAND SURVEYOR
2822 - GORUGON AVENUE,
SURREY, B.C. V4A 3J4
TELEPHONE: 604 535-3261
FAX: 604 535-4132
FILE: 3314-S1

STRATA PROPERTY ACT

STRATA PLAN BCS 1117

OWNER:
0726784 B.C. LTD.
(INC. NO. 0726784)
BY ITS AUTHORIZED SIGNATORIES

MORTGAGEE:
ENVISION CREDIT UNION
BY ITS AUTHORIZED SIGNATORIES

Kulvir Singh
NAME: KULVIR, ADJLA

Mohamed Samman
NAME: Mohamed Samman
Senior Manager, Credit

NAME: _____

NAME: _____

WITNESS:
AS TO BOTH SIGNATURES

WITNESS:
AS TO BOTH SIGNATURES

Aravind
NAME: Aravind
215-13737, 72nd Avenue, Surrey, B.C.
ADDRESS OF WITNESS
LEGAL ASSISTANT
OCCUPATION OF WITNESS

Peter Grindley Ferris
NAME: Peter Grindley Ferris
2474, 201st STREET, Langley, B.C.
ADDRESS OF WITNESS
Credit Risk Manager
Commercial Collections
OCCUPATION OF WITNESS

THE CITY OF SURREY, OWNERS OF SECTION
219 COVENANTS Bx 361406 AND Bx 361409,
CONSENT TO THE STRATA PLAN

AUTHORIZED SIGNATORY

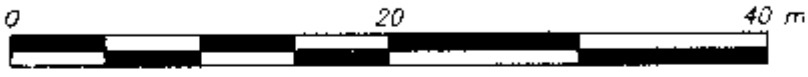
AUTHORIZED SIGNATORY

DATED THIS 20th DAY
OF OCTOBER, 2006.

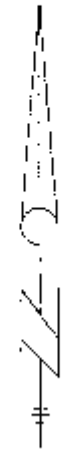
Peter Grindley Ferris
B.C.L.S.

BUILDING LOCATIONS

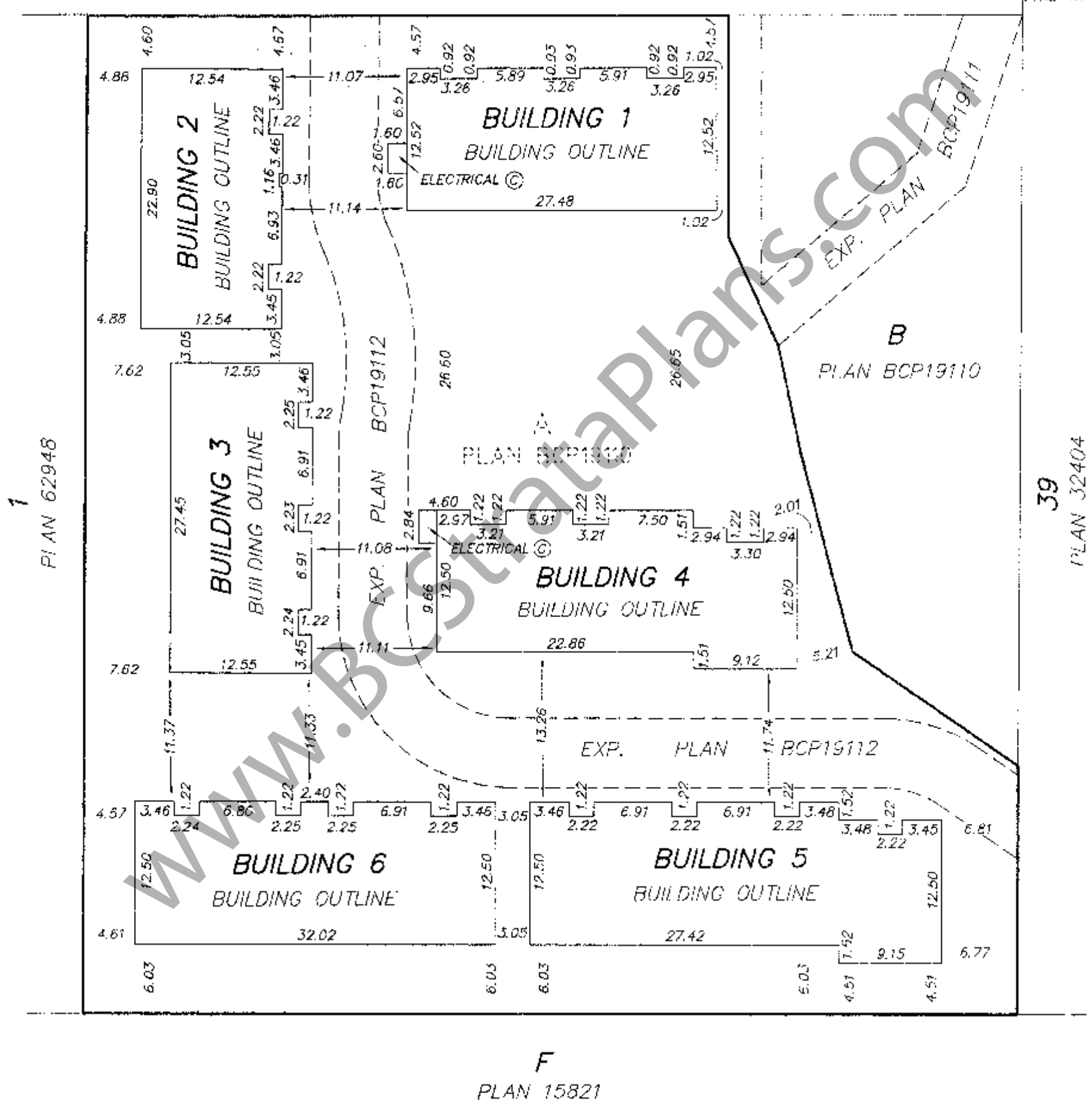
STRATA PLAN BCS 307



SCALE 1 : 400



96th AVENUE

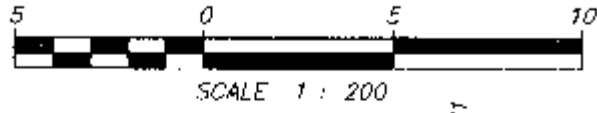


DATED THIS 20th DAY OF OCTOBER 2006.

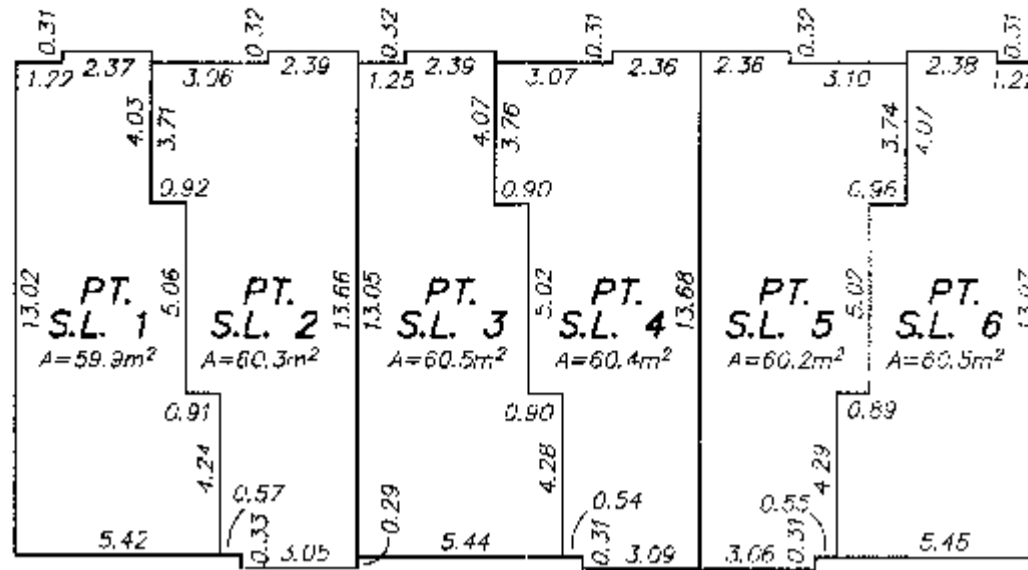
B.C.L.S.
FILE: 3314-S2

FLOOR PLANS - BUILDING 1

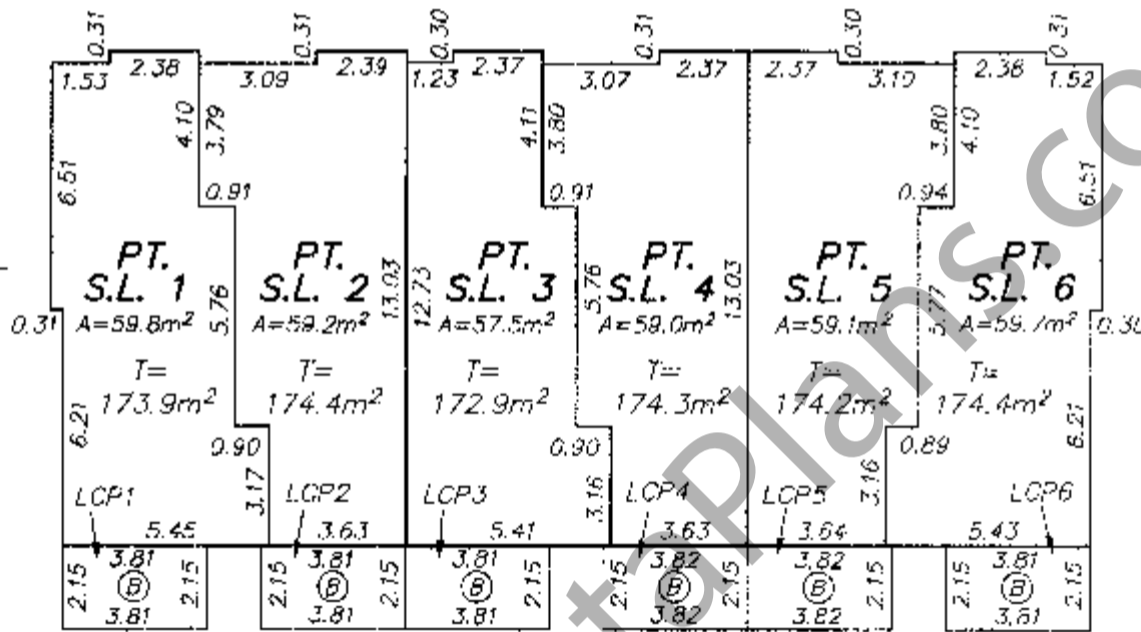
STRATA PLAN BCS 2117



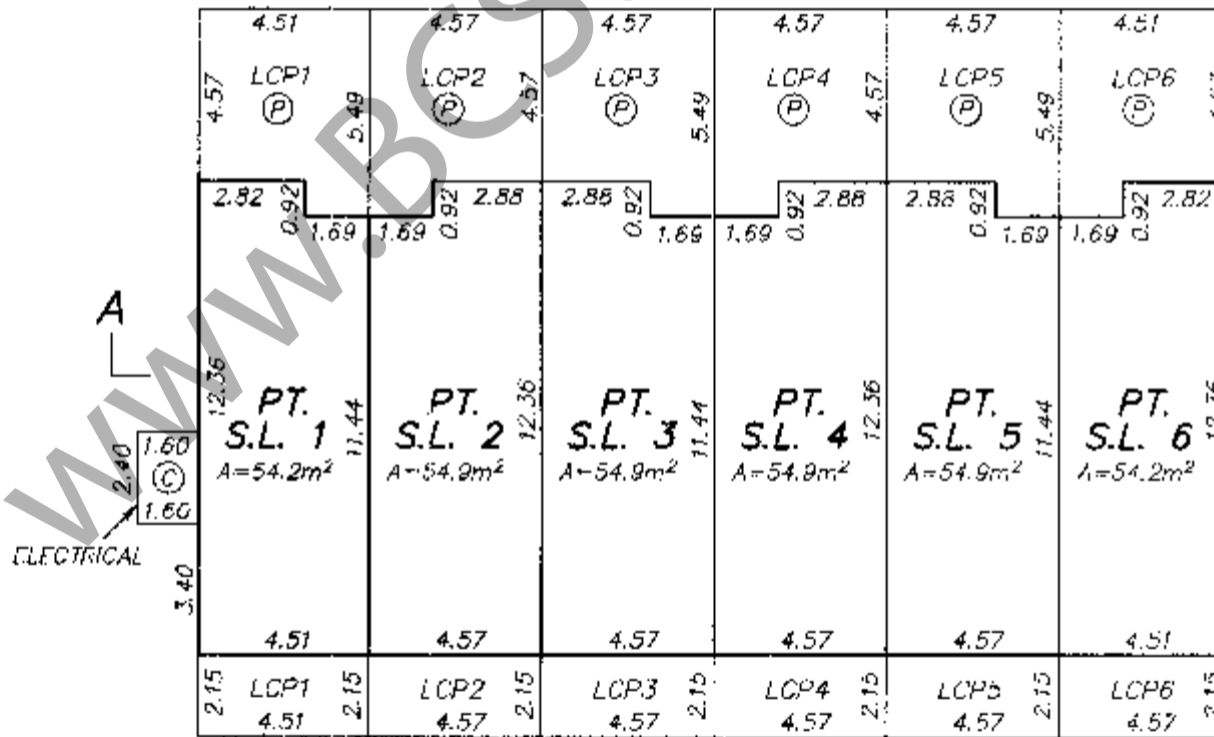
ALL DISTANCES ARE IN METRES.



THIRD FLOOR



SECOND FLOOR



MAIN FLOOR

ROOF (C)						
THIRD FLOOR	PT. S.L. 1	PT. S.L. 2	PT. S.L. 3	PT. S.L. 4	PT. S.L. 5	PT. S.L. 6
SECOND FLOOR	PT. S.L. 1	PT. S.L. 2	PT. S.L. 3	PT. S.L. 4	PT. S.L. 5	PT. S.L. 6
MAIN FLOOR	PT. S.L. 1	PT. S.L. 2	PT. S.L. 3	PT. S.L. 4	PT. S.L. 5	PT. S.L. 6

SECTION A - A'

DATED THIS 20th DAY OF OCTOBER, 2006

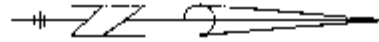
[Signature]
B.C.L.S.
FILE. 3314-53

FLOOR PLANS - BUILDING 2

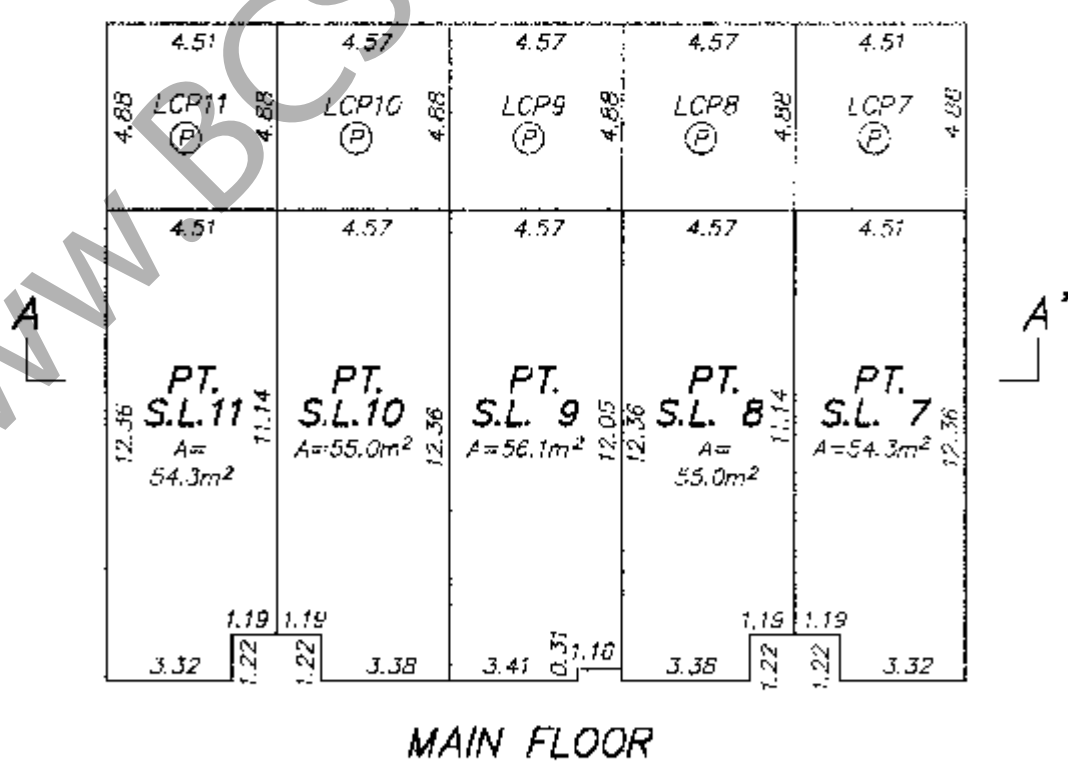
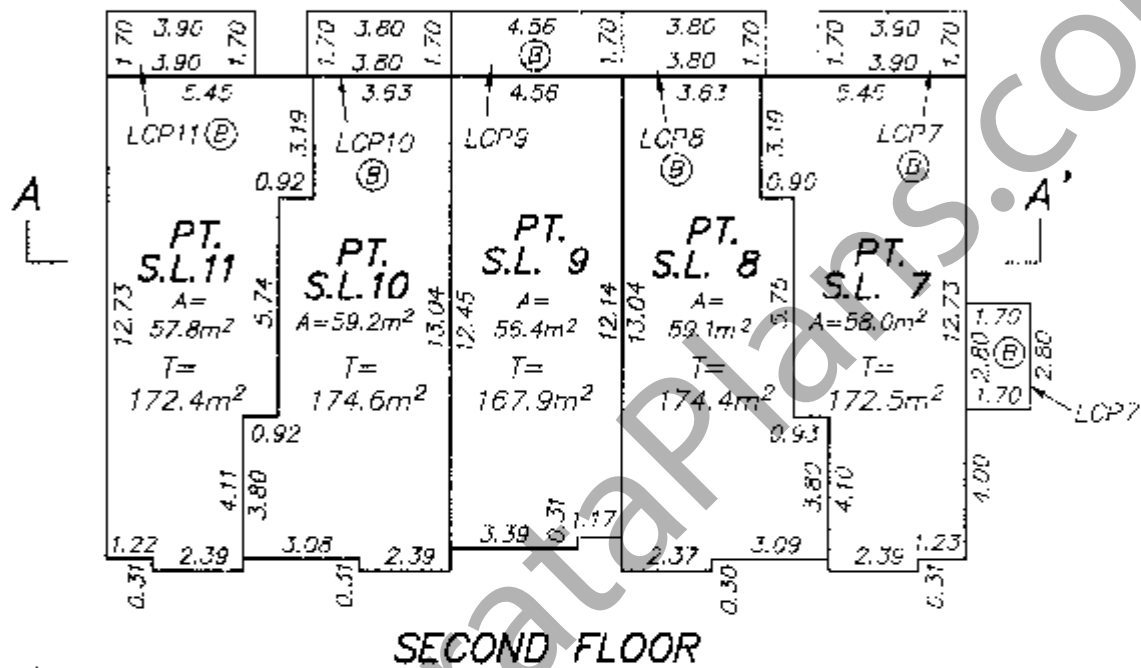
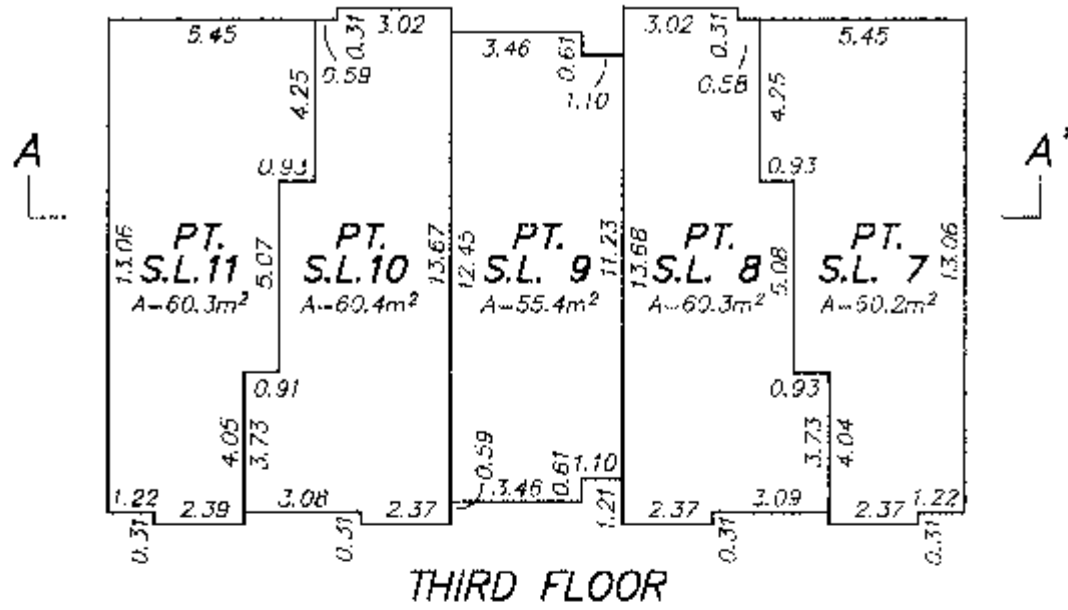
STRATA PLAN BCS 117



SCALE 1 : 200



ALL DISTANCES ARE IN METRES.



ROOF (C)					
THIRD FLOOR	PT. S.L. 11	PT. S.L. 10	PT. S.L. 9	PT. S.L. 8	PT. S.L. 7
SECOND FLOOR	PT. S.L. 11	PT. S.L. 10	PT. S.L. 9	PT. S.L. 8	PT. S.L. 7
MAIN FLOOR	PT. S.L. 11	PT. S.L. 10	PT. S.L. 9	PT. S.L. 8	PT. S.L. 7

SECTION A - A'

DATED THIS 20th DAY OF OCTOBER 2006

[Signature] B.C.L.S.

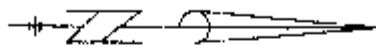
FILE: 3314-S3

FLOOR PLANS - BUILDING 3

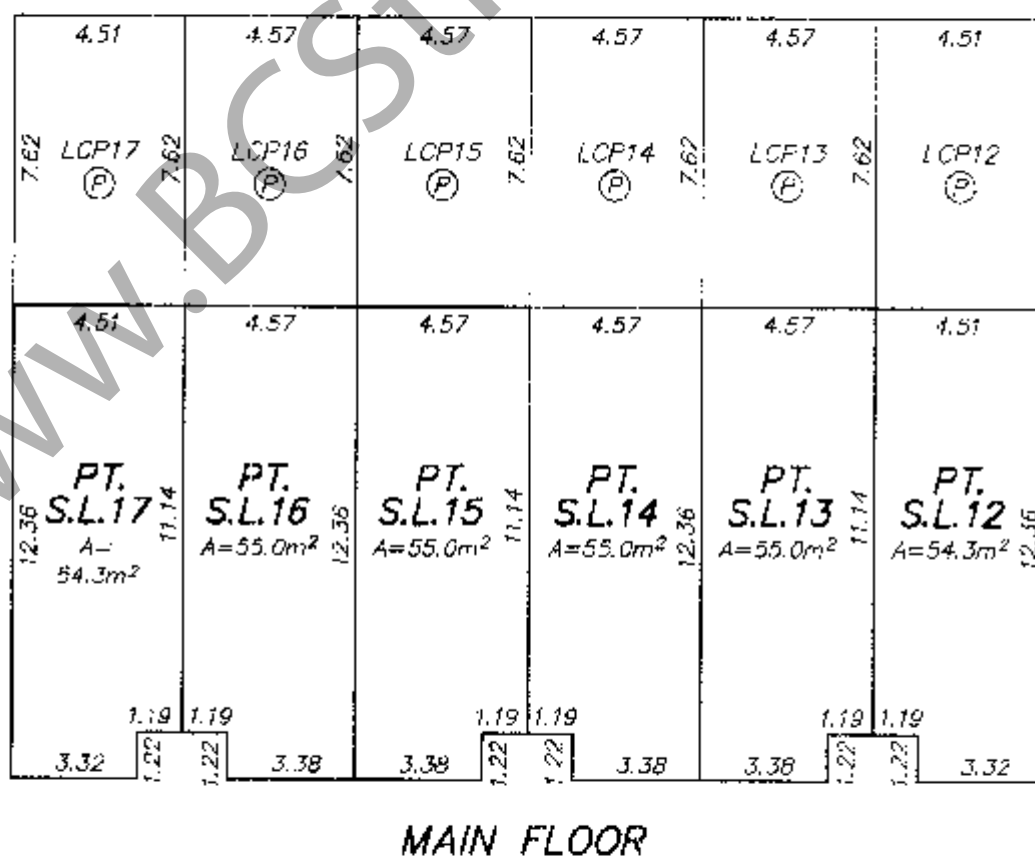
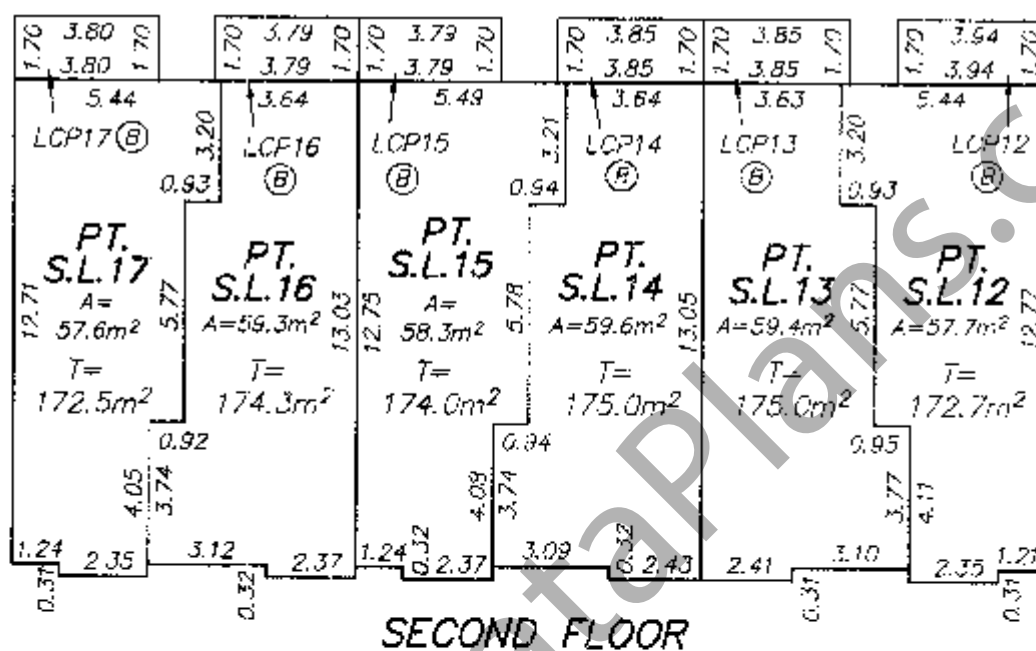
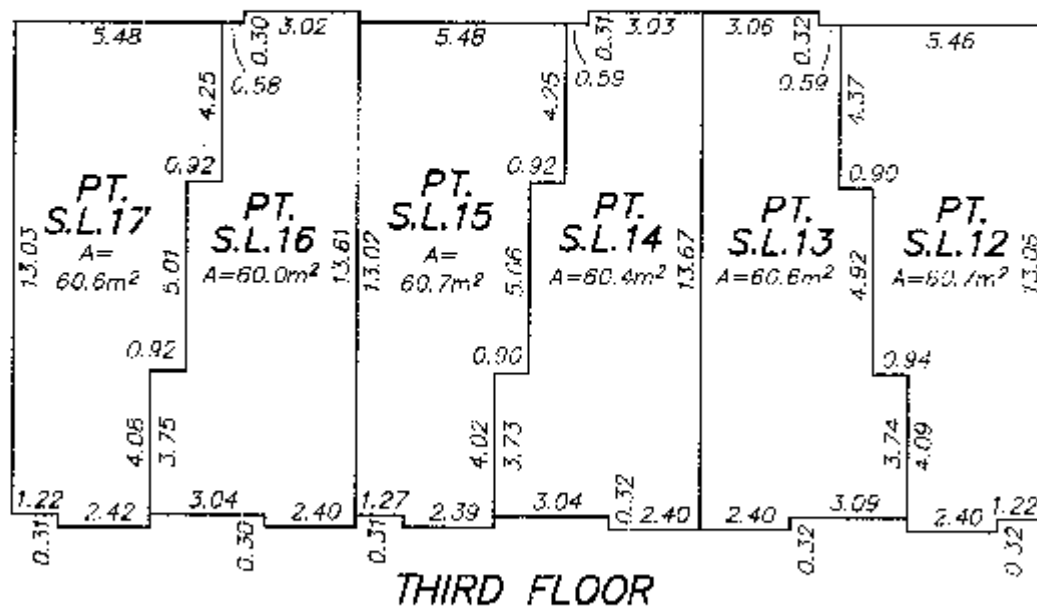
STRATA PLAN BCS 2117



SCALE 1 : 200



ALL DISTANCES ARE IN METRES



	ROOF (C)					
THIRD FLOOR	PT. S.L.17	PT. S.L.16	PT. S.L.15	PT. S.L.14	PT. S.L.13	PT. S.L.12
SECOND FLOOR	PT. S.L.17	PT. S.L.16	PT. S.L.15	PT. S.L.14	PT. S.L.13	PT. S.L.12
MAIN FLOOR	PT. S.L.17	PT. S.L.16	PT. S.L.15	PT. S.L.14	PT. S.L.13	PT. S.L.12

SECTION A - A'

DATED THIS 20th DAY OF OCTOBER, 2006

[Signature]
D.C.L.S.
FILE: 3314-S3

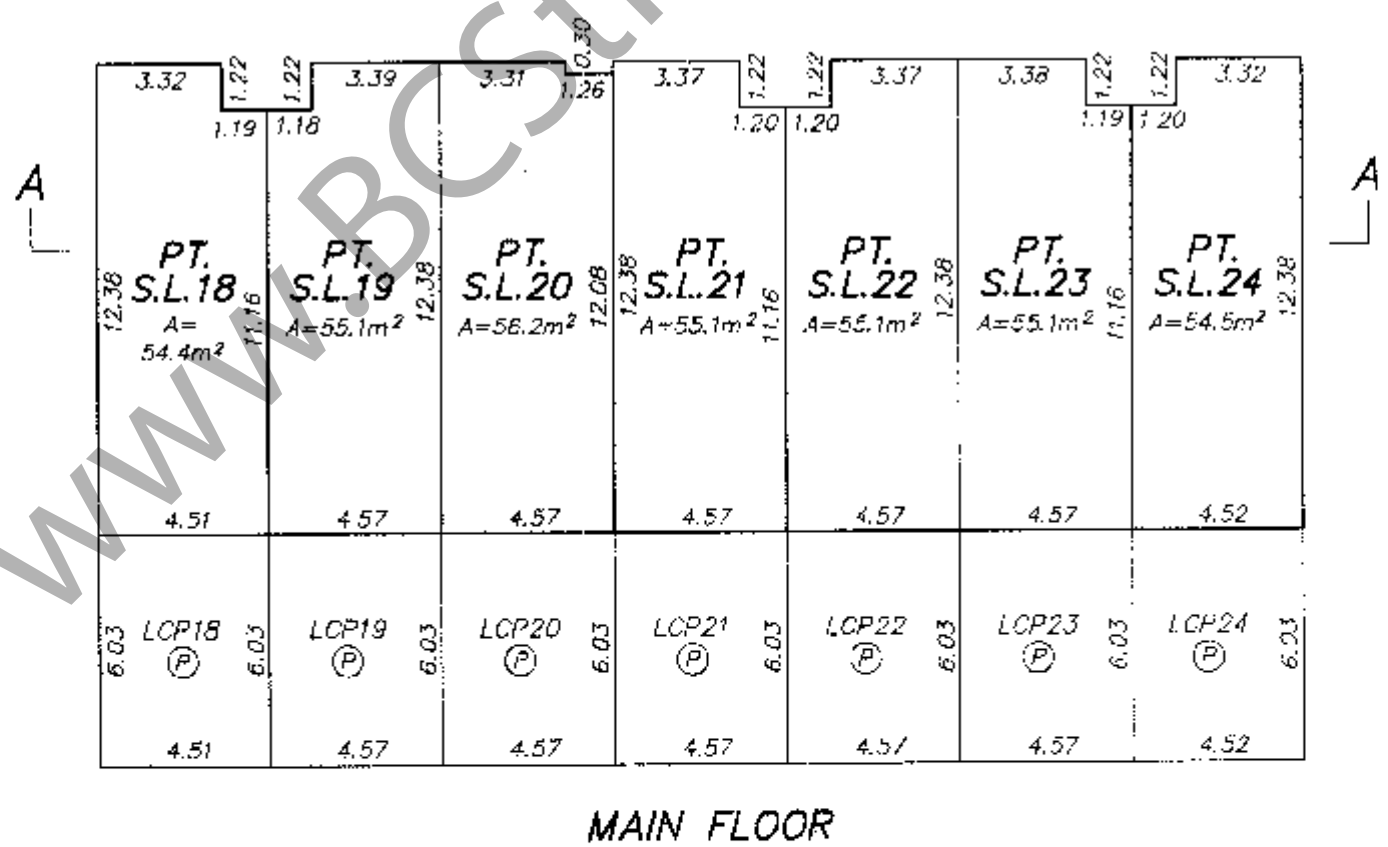
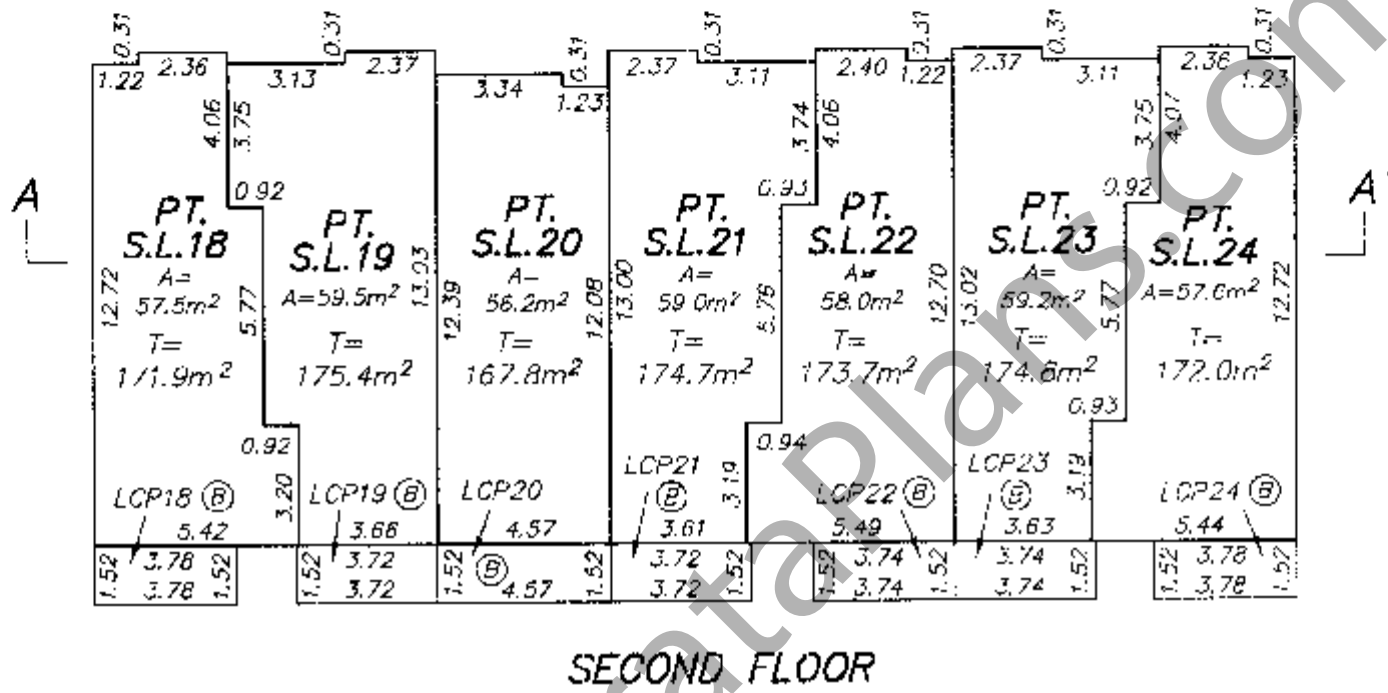
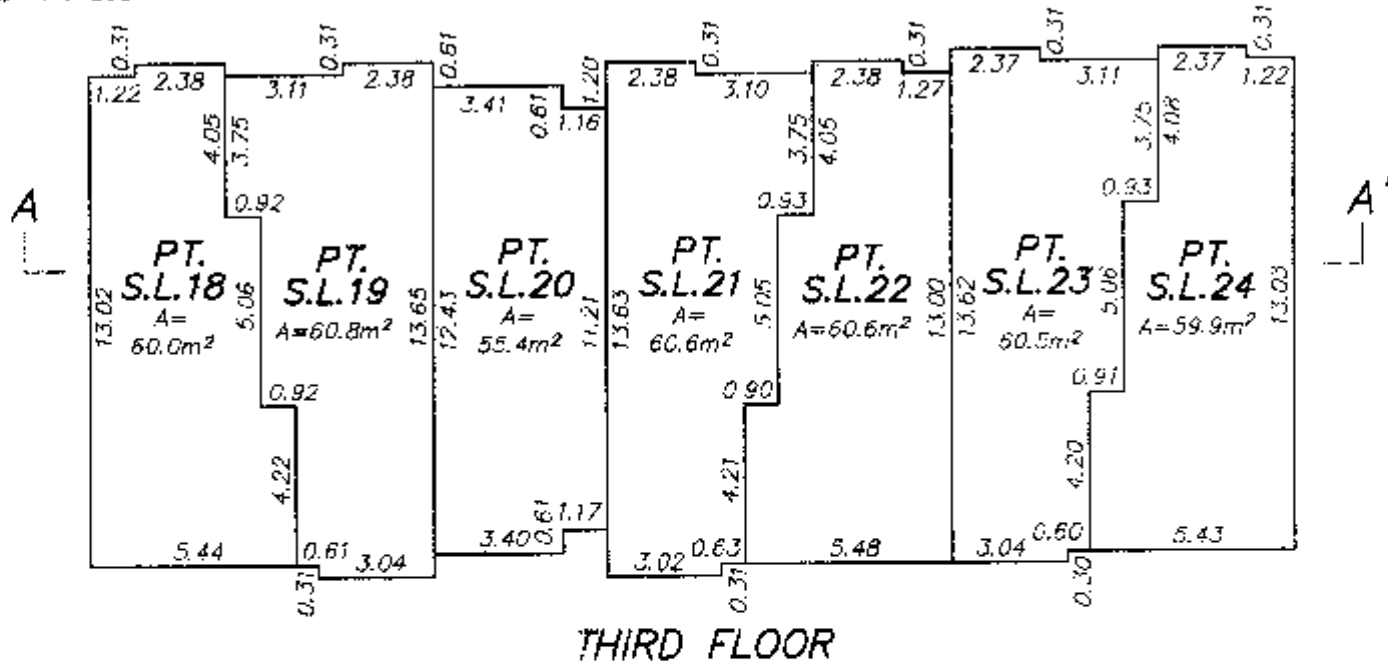
FLOOR PLANS - BUILDING 6

STRATA PLAN BCS 3117



SCALE 1 : 200

ALL DISTANCES ARE IN METRES.



ROOF (C)

THIRD FLOOR	PT. S.L.18	PT. S.L.19	PT. S.L.20	PT. S.L.21	PT. S.L.22	PT. S.L.23	PT. S.L.24
SECOND FLOOR	PT. S.L.18	PT. S.L.19	PT. S.L.20	PT. S.L.21	PT. S.L.22	PT. S.L.23	PT. S.L.24
MAIN FLOOR	PT. S.L.18	PT. S.L.19	PT. S.L.20	PT. S.L.21	PT. S.L.22	PT. S.L.23	PT. S.L.24

SECTION A - A'

DATED THIS 20th DAY OF OCTOBER 2006

[Signature]
B.C.L.S.
FILE 3314-S3

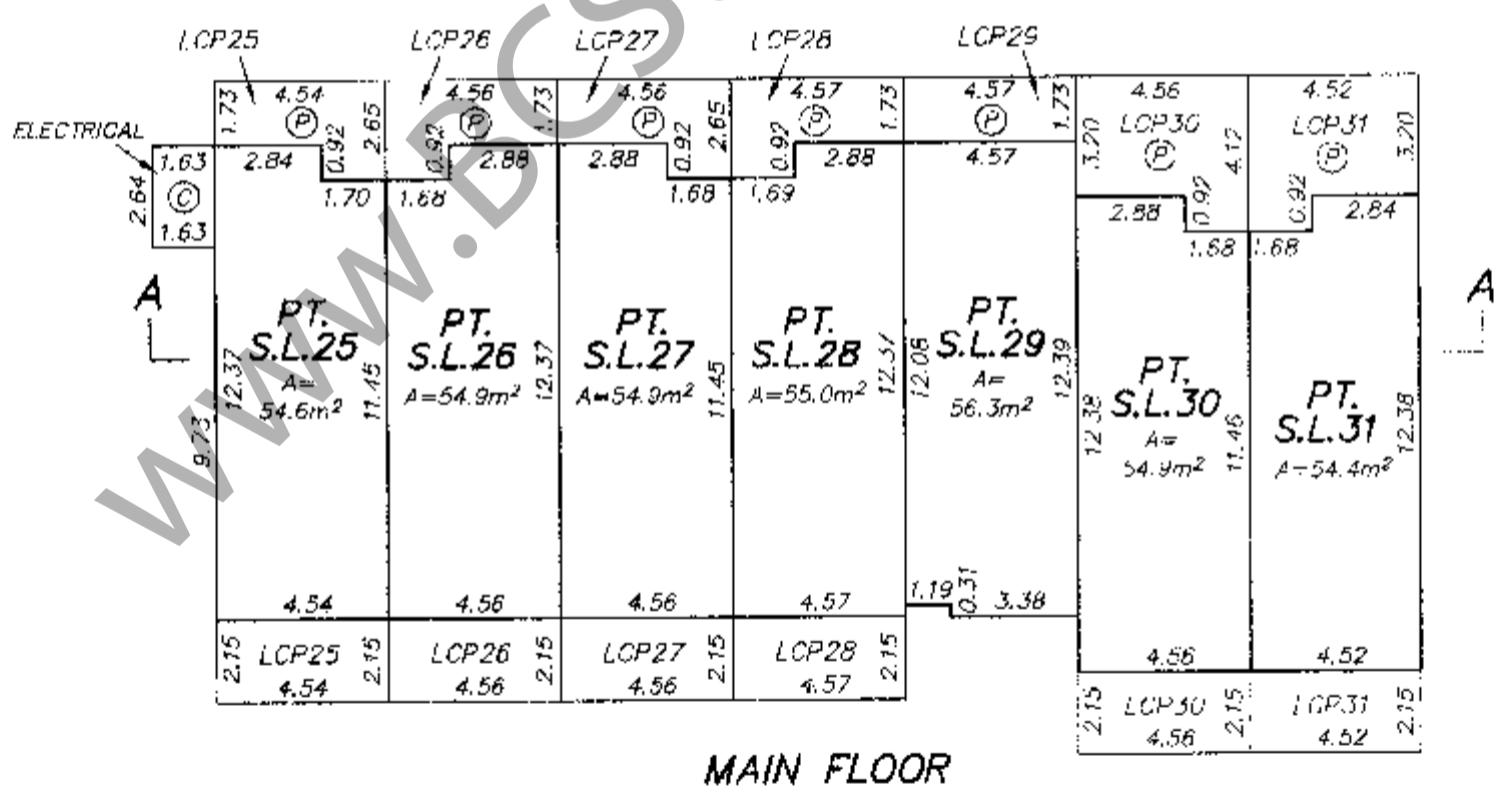
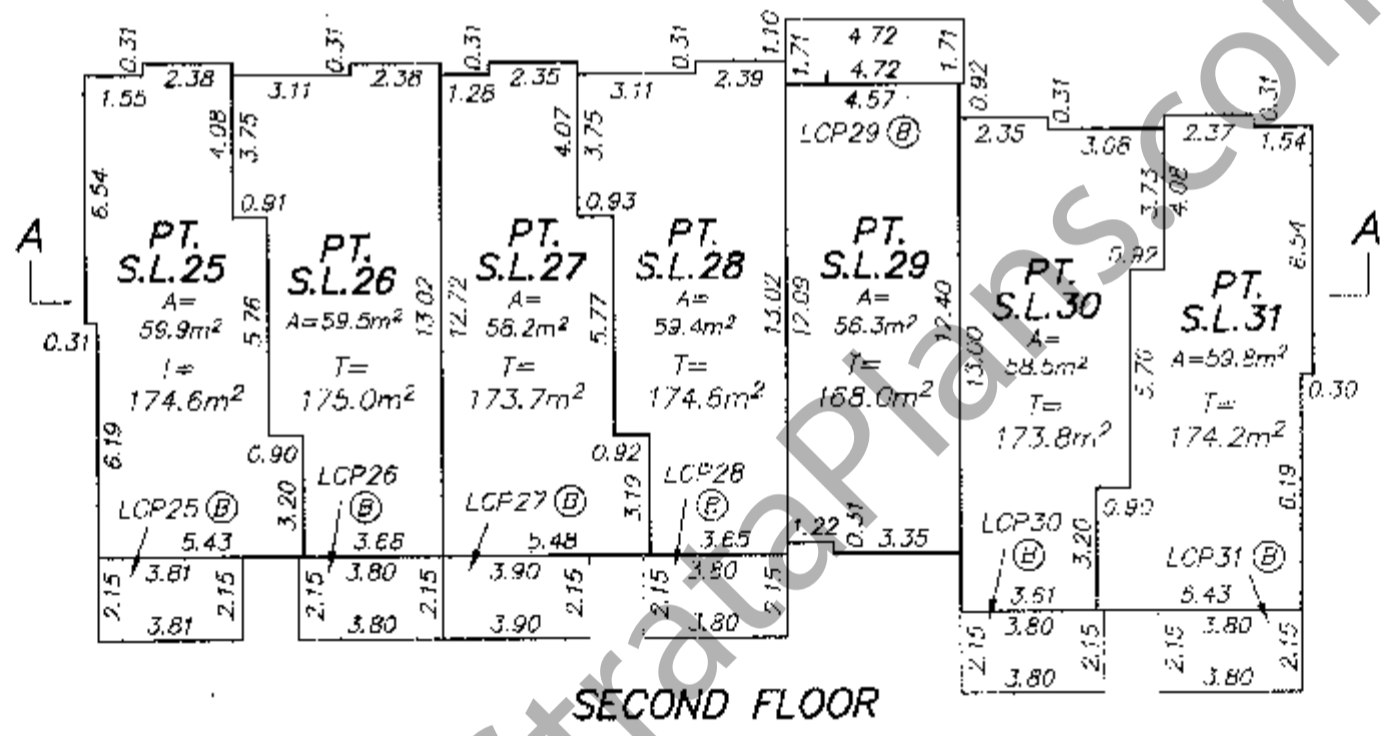
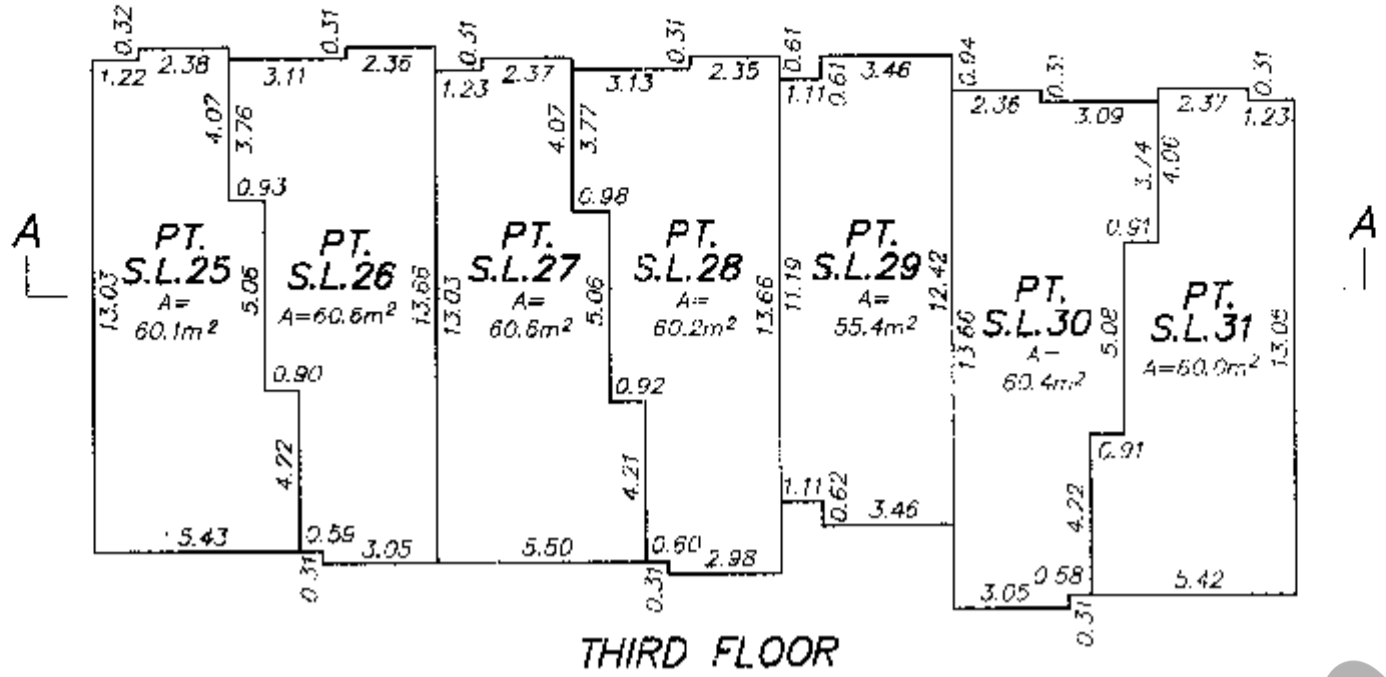
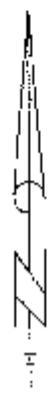
FLOOR PLANS - BUILDING 4

STRATA PLAN BCS 2117



SCALE 1 : 200

ALL DISTANCES ARE IN METRES.



ROOF (C)							
THIRD FLOOR	PT. S.L.25	PT. S.L.26	PT. S.L.27	PT. S.L.28	PT. S.L.29	PT. S.L.30	PT. S.L.31
SECOND FLOOR	PT. S.L.25	PT. S.L.26	PT. S.L.27	PT. S.L.28	PT. S.L.29	PT. S.L.30	PT. S.L.31
MAIN FLOOR	PT. S.L.25	PT. S.L.26	PT. S.L.27	PT. S.L.28	PT. S.L.29	PT. S.L.30	PT. S.L.31

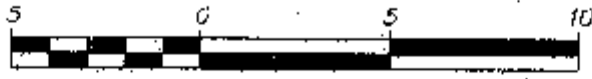
SECTION A - A'

DATED THIS 20th DAY OF OCTOBER, 2006

[Signature]
B.C.L.S.
FILE: 3314-S3

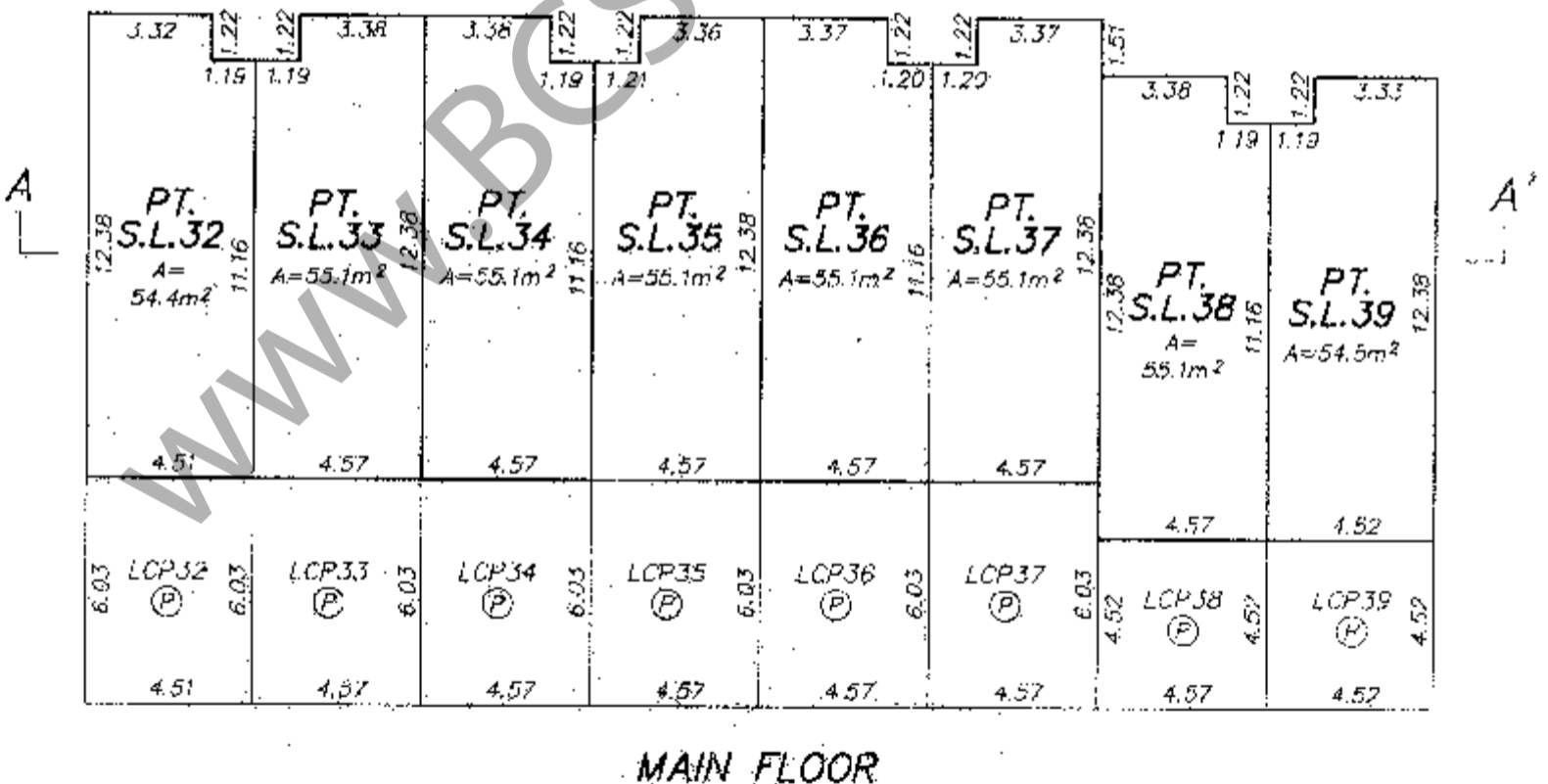
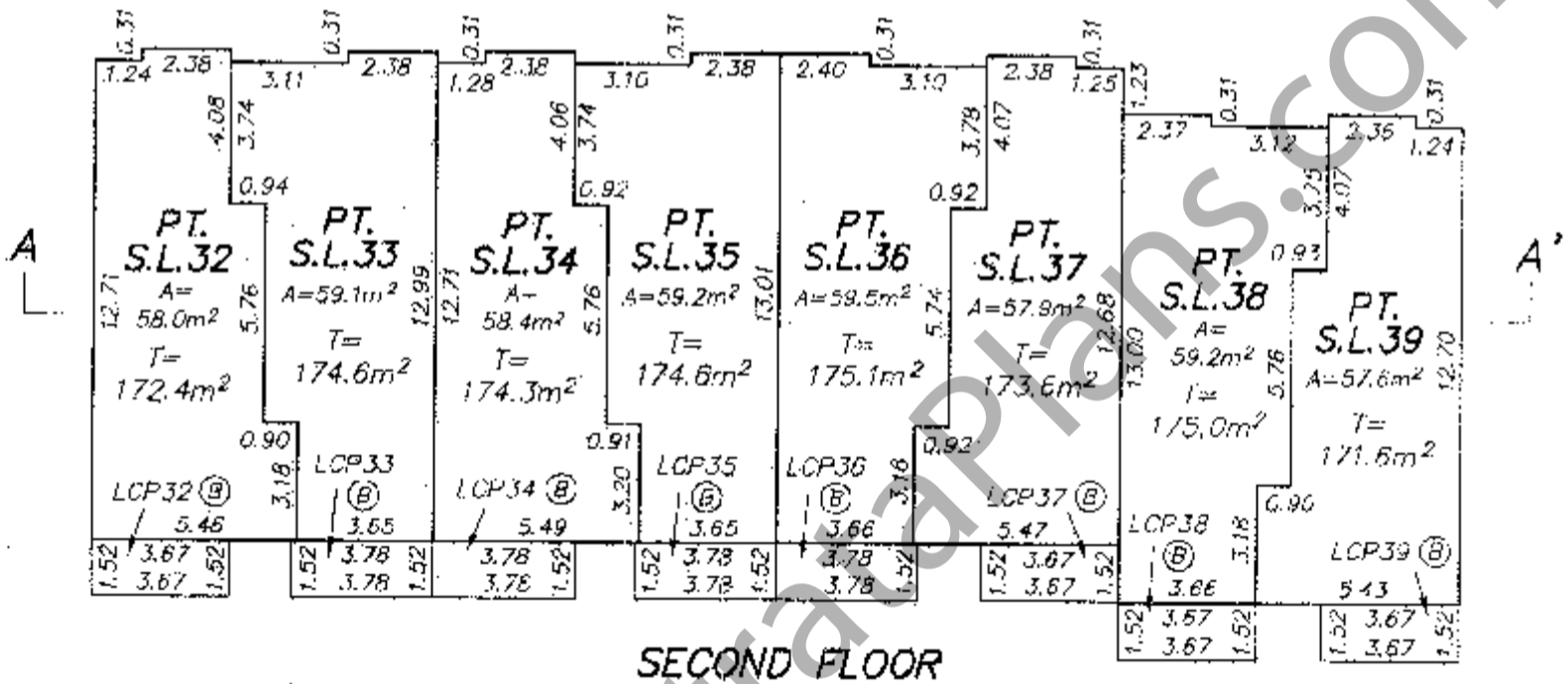
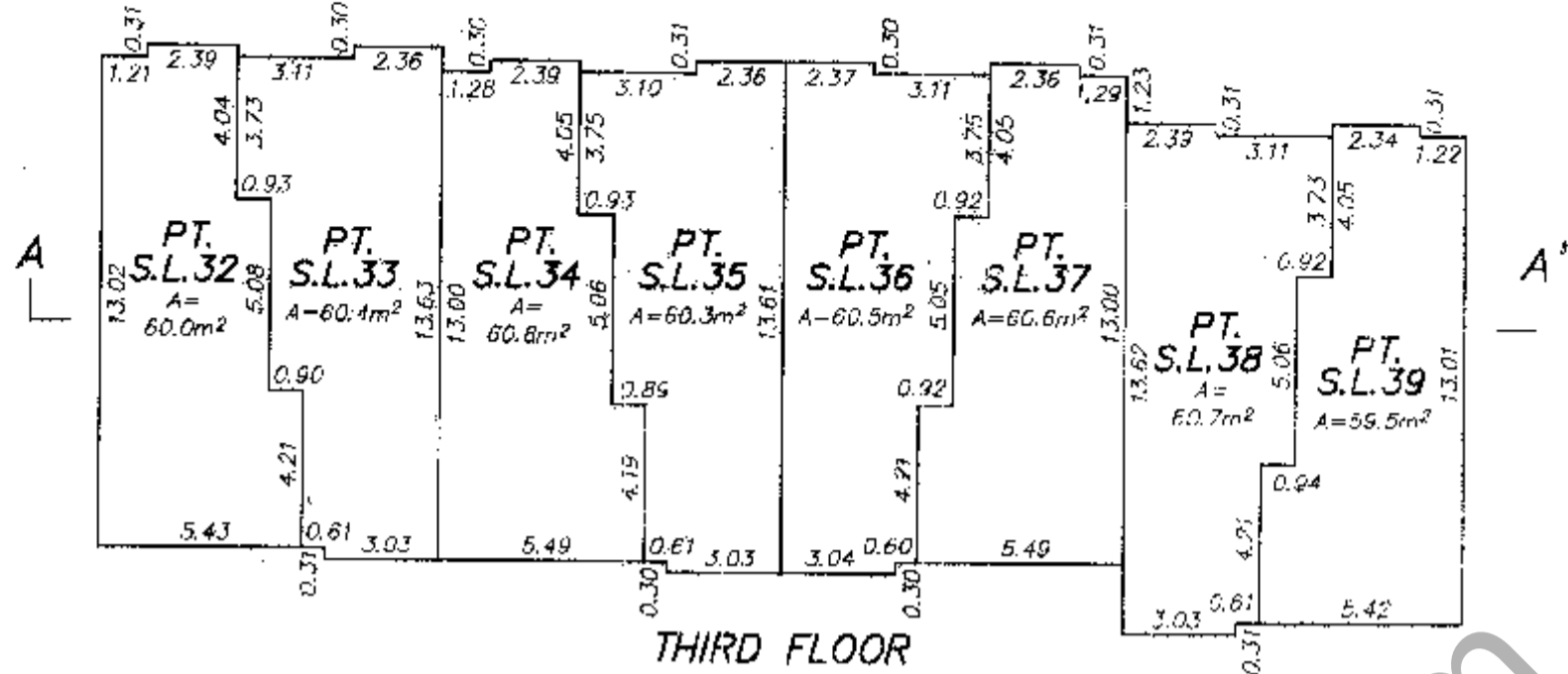
FLOOR PLANS - BUILDING 5

STRATA PLAN BCS 2117



ALL DISTANCES ARE IN METRES.

SCALE 1 : 200



ROOF (C)

THIRD FLOOR	PT. S.L.32	PT. S.L.33	PT. S.L.34	PT. S.L.35	PT. S.L.36	PT. S.L.37	PT. S.L.38	PT. S.L.39
SECOND FLOOR	PT. S.L.32	PT. S.L.33	PT. S.L.34	PT. S.L.35	PT. S.L.36	PT. S.L.37	PT. S.L.38	PT. S.L.39
MAIN FLOOR	PT. S.L.32	PT. S.L.33	PT. S.L.34	PT. S.L.35	PT. S.L.36	PT. S.L.37	PT. S.L.38	PT. S.L.39

SECTION A - A'

DATED THIS 20th DAY OF OCTOBER, 2005

[Signature]
R. G. S.

FILE: 3314-53