

GC-15581A-B-H80

**STRATA PLAN OF  
PARCEL 'B' OF BLOCK 'A',  
GOVERNMENT OFFICE GARDENS,  
REFERENCE PLAN 61857  
CITY OF NEW WESTMINSTER**

SCALE: 1:500 (metric)

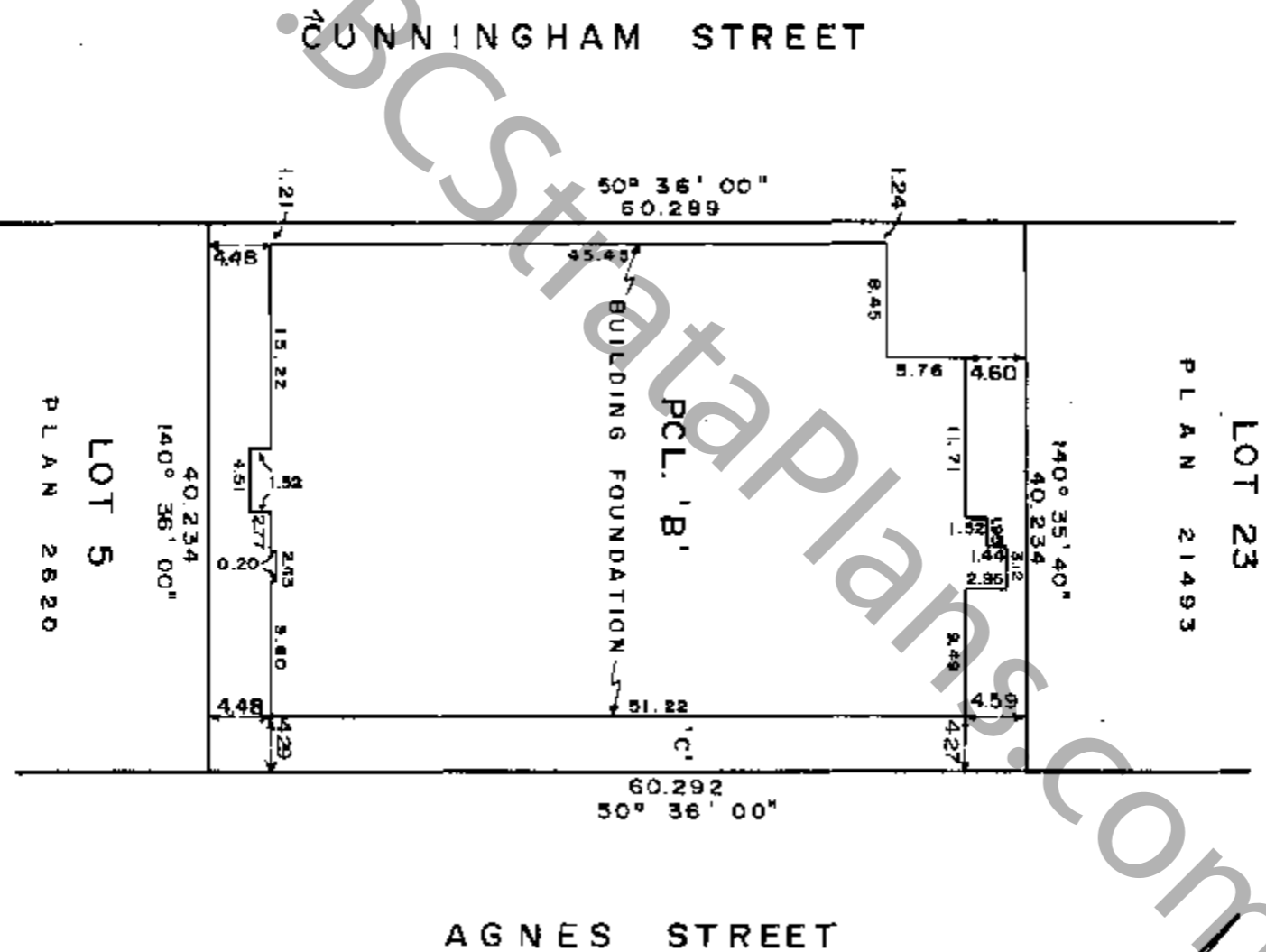
The address for the service of documents  
on the Strata Corporation is:  
The Owners' Strata Plan No. VR 21116  
1/4- 1800 - 700 W. Georgia Street,  
Vancouver, B.C. V7Y 1B8

First Sheet - Sheet 1 of 14 Sheets.

Strata Plan VR 21116 deposited and  
registered in the Land Title Office of  
New Westminster, B.C. this 9th day of  
February, 1987

Reg. V13826  
Civic address is:  
423 Agnes Street,  
New Westminster, B.C.

*[Signature]*  
Registrar



I, B.J. OKE, of Vancouver, B.C.,  
British Columbia Land Surveyor,  
hereby certify that the building  
erected on the parcel described above  
is wholly within the external boundaries  
of that parcel. Dated at Vancouver on  
this 1st day of December, 1983

*[Signature]*

B.C.L.S.

**LEGEND:**

- Decks and Patios are included within the Strata Lots
- S.L. denotes Strata Lots
- PT " " Port
- C " " Common
- m<sup>2</sup> " " Square Metres
- A " " Area

This plan lies within the  
Greater Vancouver Regional District

HERMON, BUNBURY & OKE,  
PROFESSIONAL LAND SURVEYORS,  
VANCOUVER & WHISTLER, B.C.

CONDOMINIUM ACT

LOT NO.	SHEET NO.	FORM 1 Schedule of Unit Entitlement	FORM 2 Schedule of Interest Upon Destruction
1	5, 11	204	225
2	5, 11	162	178
3	5, 11, 12	164	178
4	5, 11, 12	164	178
5	5, 11	161	178
6	5, 11	162	178
7	5, 11	174	187
8	5, 10	220	218
9	5, 10	131	159
10	5, 10, 12	192	174
11	5, 10, 12	192	174
12	5, 10	219	218
13	6, 11	214	225
14	6, 11	161	178
15	6, 11, 12	165	178
16	6, 11, 12	164	178
17	6, 11	161	178
18	6, 11	162	178
19	6, 11	174	187
20	6, 10	216	225
21	6, 10	133	167
22	6, 10, 12	191	171
23	6, 12	164	174
24	6, 12	249	225
25	6, 12	247	225
26	6, 12	144	171
27	6, 10, 12	193	174
28	6, 10	220	221
29	7, 8, 11	281	267
30	7, 8, 11	217	229
31	7, 8, 11, 12	222	229
32	7, 8, 11, 12	222	229
33	7, 8, 11	219	229
34	7, 8, 11	219	229
35	7, 8, 11	238	237
36	7, 8, 10	341	284
37	7, 8, 10	187	263
38	7, 8, 10, 12	283	225
39	7, 12	165	174
40	7, 12	248	225
41	7, 12	252	225
42	7, 12	144	171
43	7, 8, 10, 12	280	225
44	7, 8, 10	290	263
45	8, 9, 12	257	229
46	8, 9, 12	309	269
47	8, 9, 12	308	269
48	8, 9, 12	215	229
Aggregate		10,000	10,000

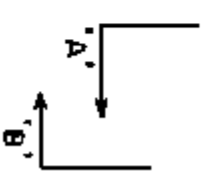
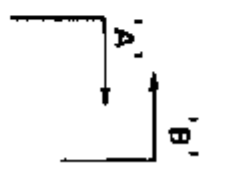
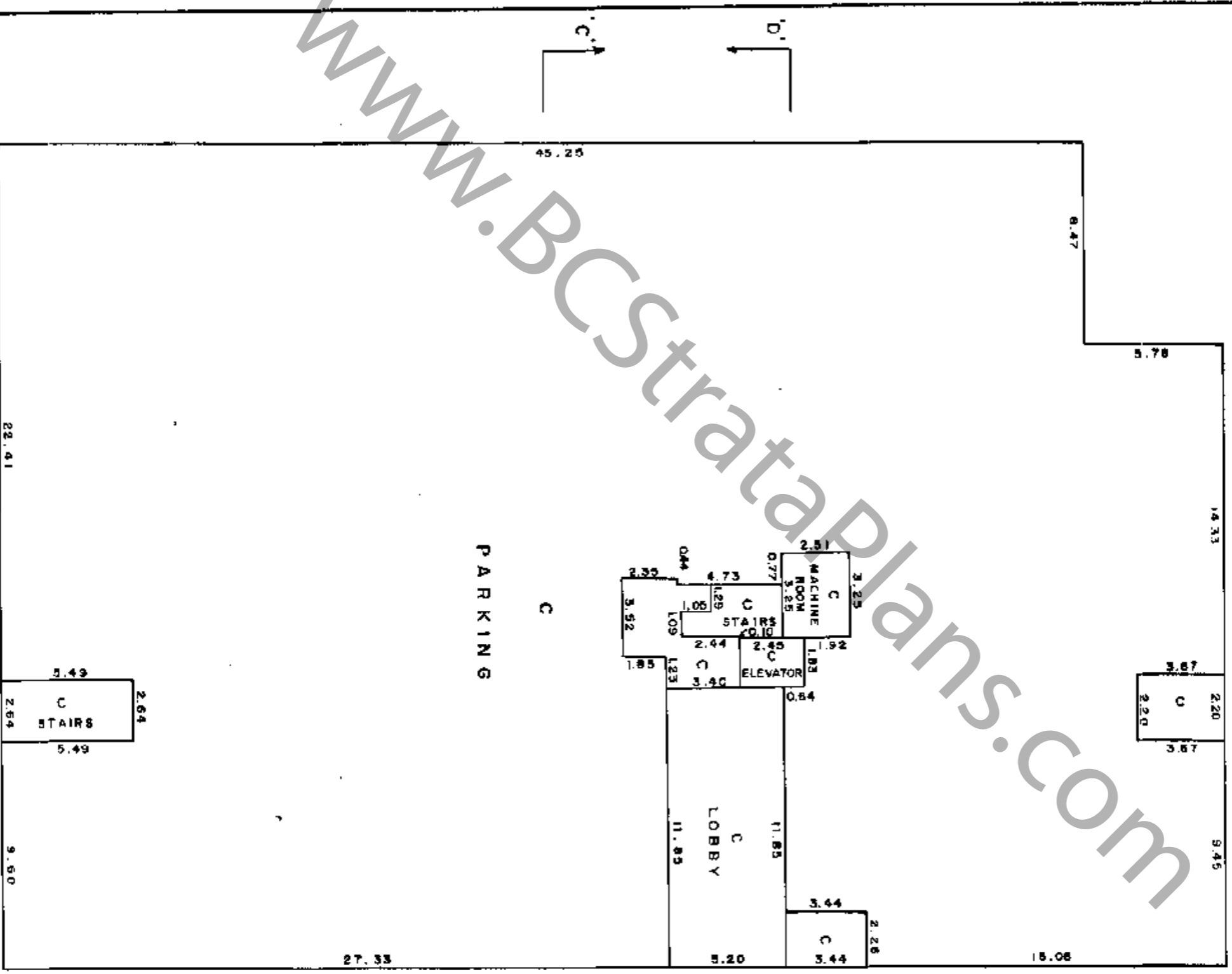


# GARAGE LEVEL

SCALE : 1 : 200 (metric)



Sheet 4 of 14 Sheets.  
STRATA PLAN YR. NW2116



WWW.BCStrataPlans.com

December 1st, 1983

(783164)

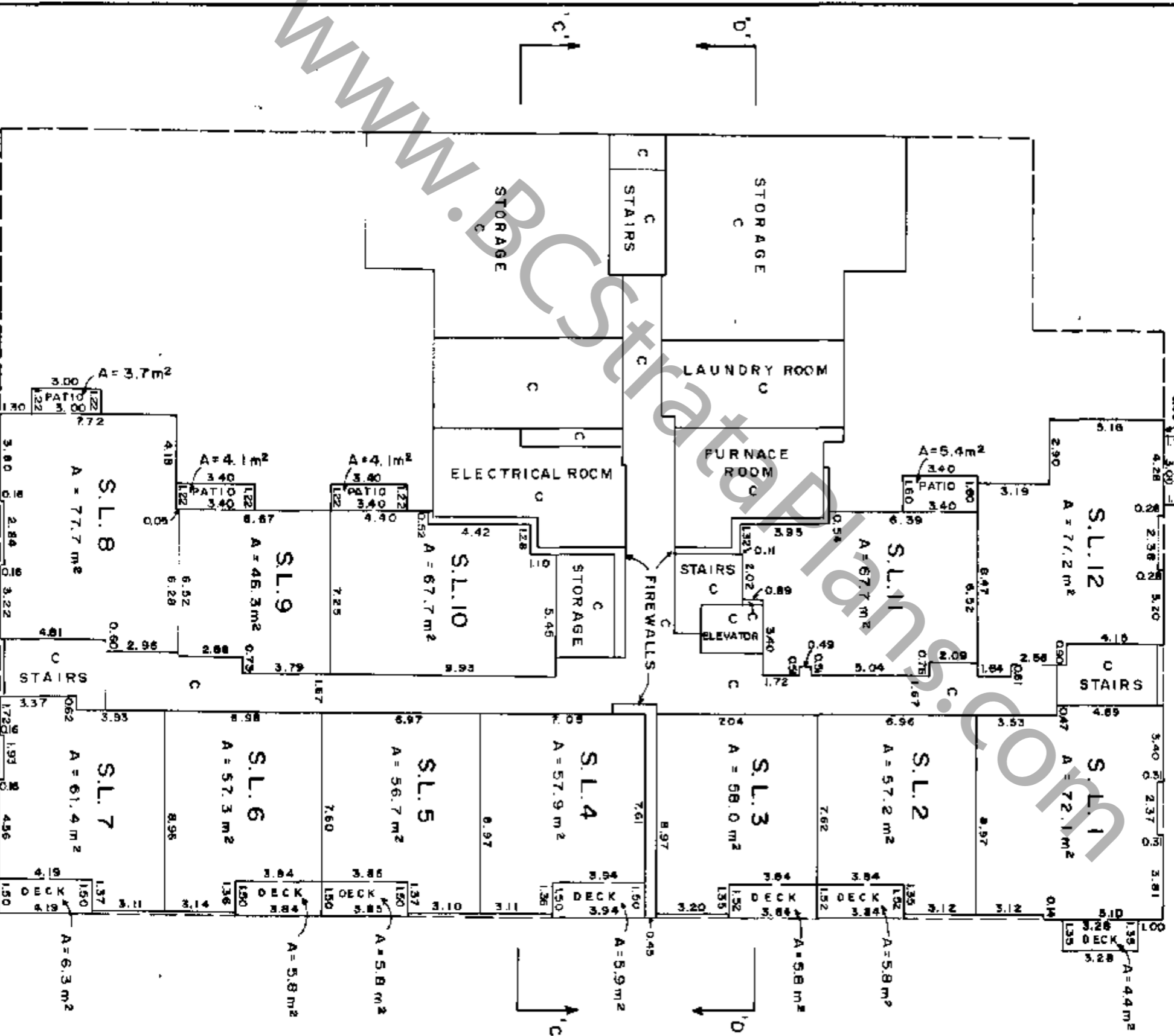
S-3700 - ④

# FIRST FLOOR

SCALE : 1 : 200 (metric)

TOTAL AREA

S.L.1 = 76.5 m <sup>2</sup>
S.L.2 = 63.0 m <sup>2</sup>
S.L.3 = 63.8 m <sup>2</sup>
S.L.4 = 63.8 m <sup>2</sup>
S.L.5 = 62.5 m <sup>2</sup>
S.L.6 = 63.1 m <sup>2</sup>
S.L.7 = 67.7 m <sup>2</sup>
S.L.8 = 61.4 m <sup>2</sup>
S.L.9 = 50.4 m <sup>2</sup>
S.L.10 = 71.8 m <sup>2</sup>
S.L.11 = 73.1 m <sup>2</sup>
S.L.12 = 80.9 m <sup>2</sup>



Sheet 5 of 14 Sheets.  
 STRAITA PLAN V.R. Alud2116

December 1st, 1983.

(783164)

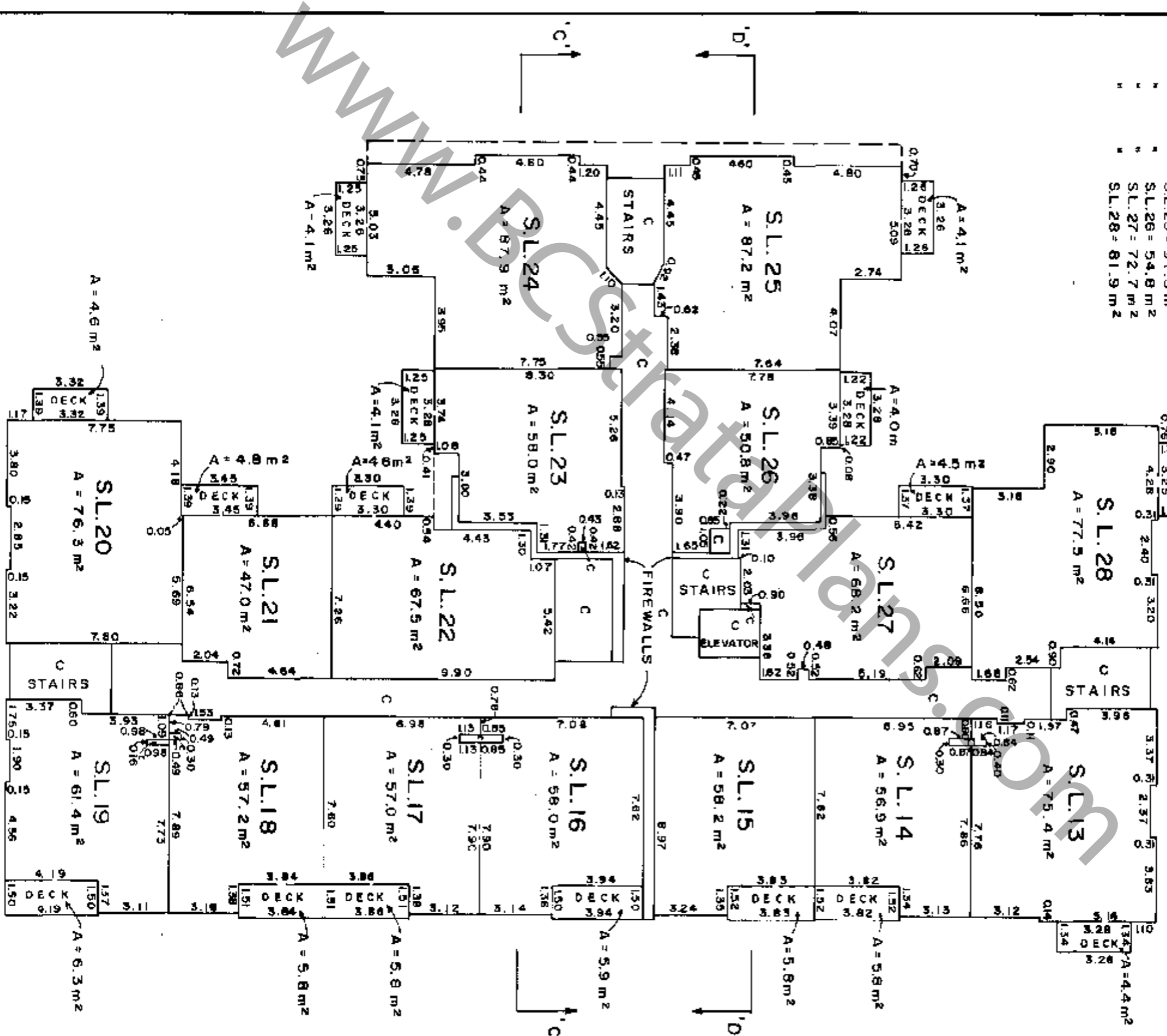
S-3700 . ©

# SECOND FLOOR

SCALE : 1 : 200 (metric)

TOTAL AREA

S.L.13 = 79.8 m <sup>2</sup>
S.L.14 = 62.7 m <sup>2</sup>
S.L.15 = 64.0 m <sup>2</sup>
S.L.16 = 65.9 m <sup>2</sup>
S.L.17 = 62.8 m <sup>2</sup>
S.L.18 = 63.0 m <sup>2</sup>
S.L.19 = 67.7 m <sup>2</sup>
S.L.20 = 80.9 m <sup>2</sup>
S.L.21 = 51.8 m <sup>2</sup>
S.L.22 = 72.1 m <sup>2</sup>
S.L.23 = 62.1 m <sup>2</sup>
S.L.24 = 92.0 m <sup>2</sup>
S.L.25 = 91.3 m <sup>2</sup>
S.L.26 = 54.8 m <sup>2</sup>
S.L.27 = 72.7 m <sup>2</sup>
S.L.28 = 81.9 m <sup>2</sup>



Sheet 6 of 14 Sheets.  
STRATA PLAN V.R. 21/2/116

December 1st, 1983.

(J.83164)

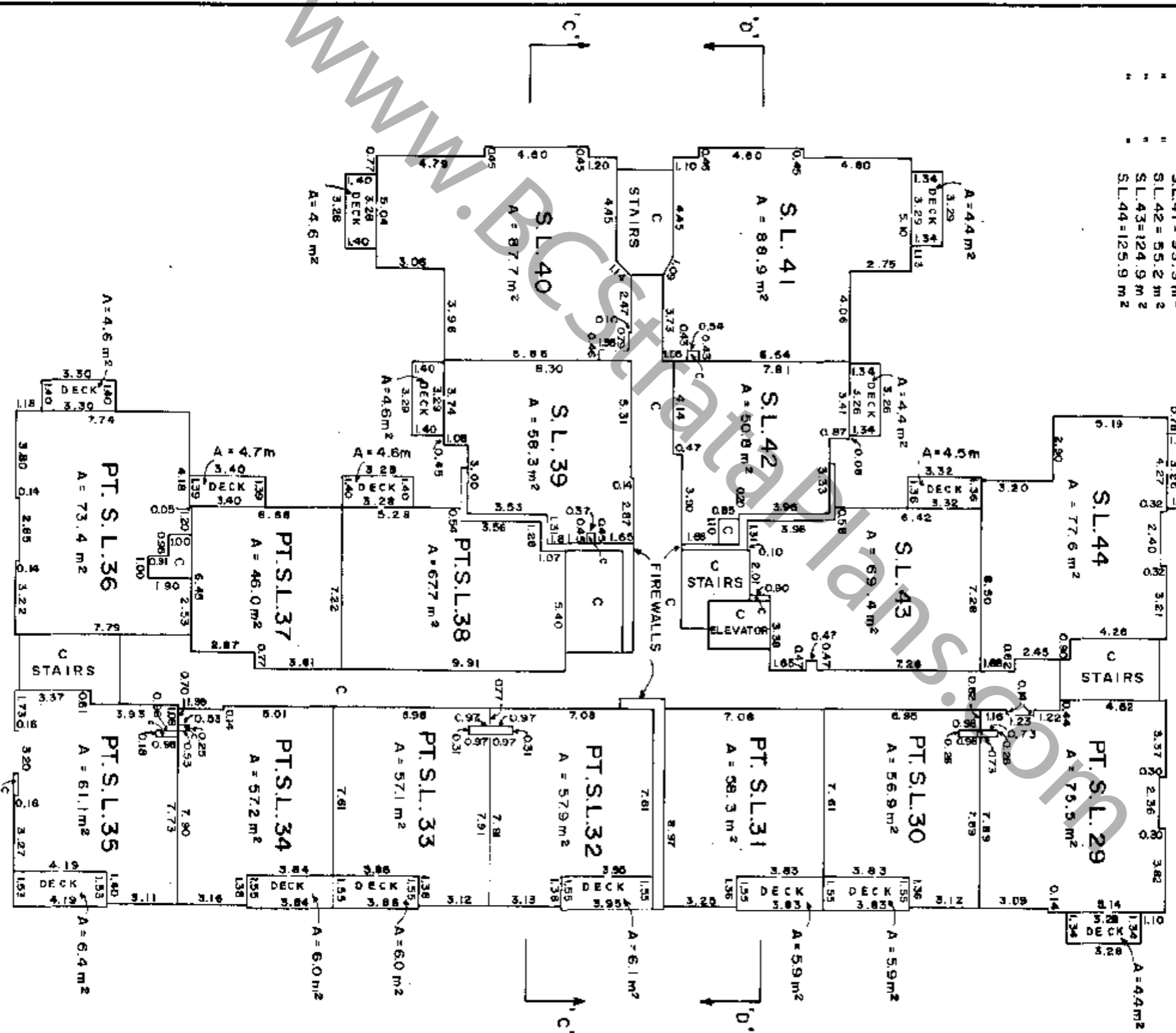
S-3700 . ©

# THIRD FLOOR

SCALE: 1 : 200 (metric)

TOTAL AREA

SL.29 = 122.4 m <sup>2</sup>
SL.30 = 94.9 m <sup>2</sup>
SL.31 = 97.7 m <sup>2</sup>
SL.32 = 96.8 m <sup>2</sup>
SL.33 = 95.7 m <sup>2</sup>
SL.34 = 95.8 m <sup>2</sup>
SL.35 = 99.4 m <sup>2</sup>
SL.36 = 125.0 m <sup>2</sup>
SL.37 = 77.1 m <sup>2</sup>
SL.38 = 125.0 m <sup>2</sup>
SL.39 = 62.9 m <sup>2</sup>
SL.40 = 92.3 m <sup>2</sup>
SL.41 = 89.3 m <sup>2</sup>
SL.42 = 55.2 m <sup>2</sup>
SL.43 = 124.9 m <sup>2</sup>
SL.44 = 125.9 m <sup>2</sup>



Sheet 7 of 14 Sheets.  
STRATA PLAN V.R. *Albino*

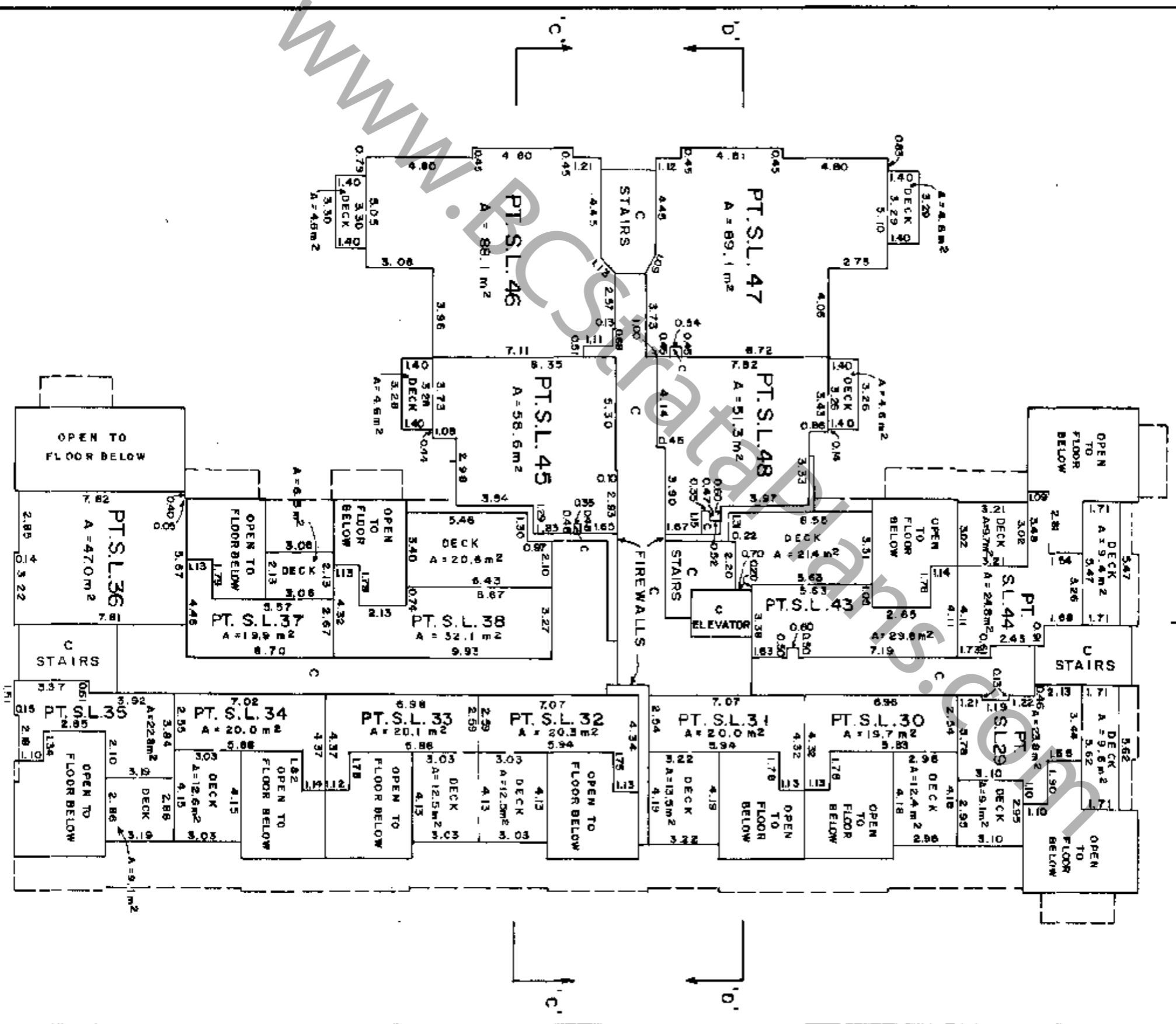
(J83164)

December 1st, 1983.  
S-3700 - ②

# FOURTH FLOOR

SCALE: 1 : 200 (metric)

TOTAL AREA SL.45=100.8 m<sup>2</sup>  
 " " SL.46=114.4 m<sup>2</sup>  
 " " SL.47=114.3 m<sup>2</sup>  
 " " SL.48= 88.5 m<sup>2</sup>



Sheet 8 of 14 Sheets.  
 STRATA PLAN Y.R. 2002/16

December 1st, 1983

(J. 83164)

S-3700

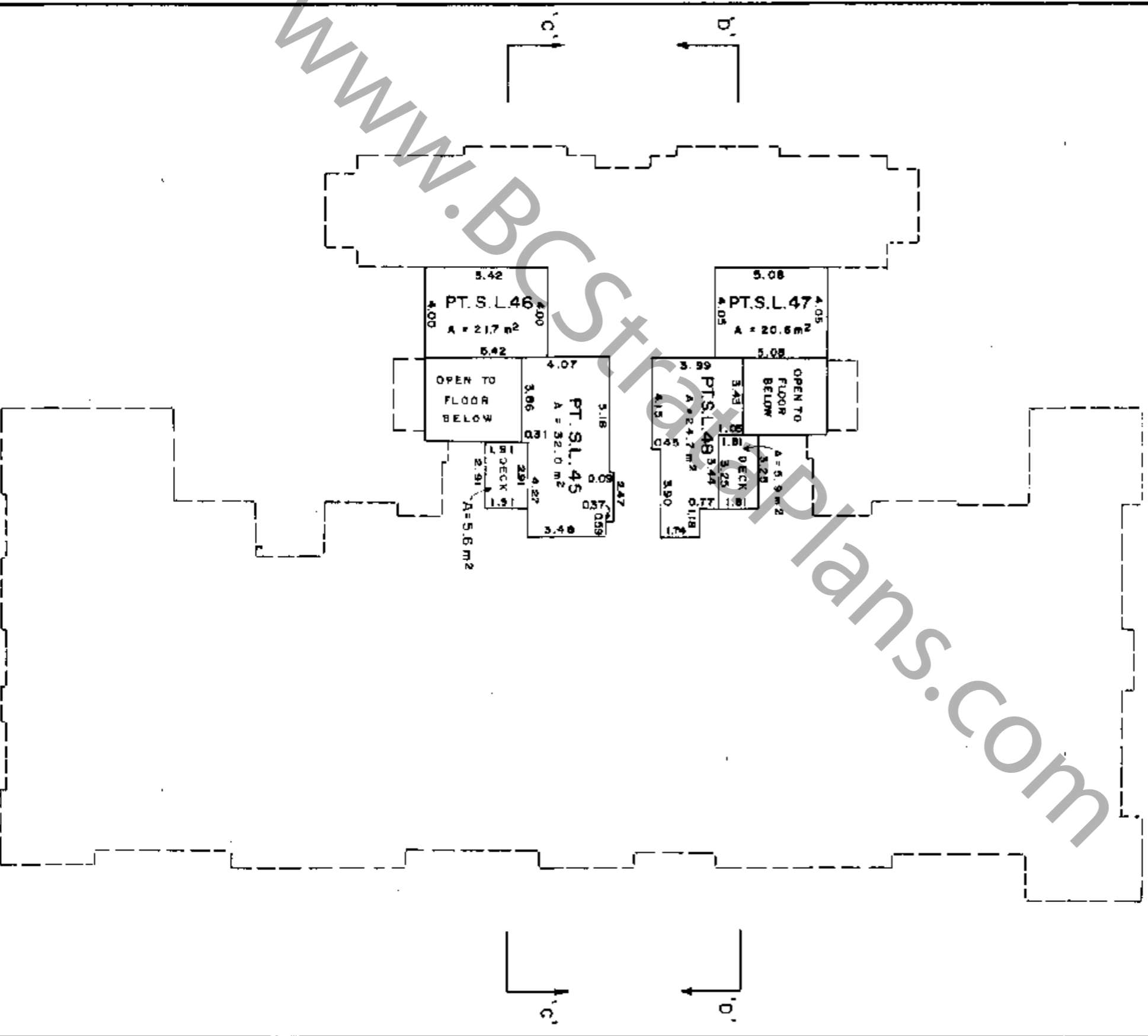


GC:155818-9-HEU

FIFTH FLOOR

SCALE: 1:200 (metric)

Sheet 9 of 14 Sheets  
STRATA PLAN No. *Nullie*



(7.83164)

December 1st, 1983

S-3700 (B)

GC-156316-51110

**SECTION A-A**  
SCALE: 1 : 200 (metric)

PT. S. L. 44		PT. S. L. 43		ELEVATOR	C HALL	C	PT. S. L. 38	PT. S. L. 37	PT. S. L. 36	Fourth Floor
PT. S. L. 44		PT. S. L. 43			C HALL	C STORAGE	PT. S. L. 38	PT. S. L. 37	PT. S. L. 36	Third Floor
S. L. 28		S. L. 27			C HALL	C STORAGE	S. L. 22	S. L. 21	S. L. 20	Second Floor
S. L. 12		S. L. 11			C HALL	C STORAGE	S. L. 10	S. L. 9	S. L. 8	First Floor
C PARKING					C	C PARKING				Garage Level

Sheet 10 of 14 Sheets.  
STRATA PLAN No. 116

(J.83164)

Sp

December 1st, 1983

S-3700 ©

GC 155816 9 H80

**SECTION B-B**  
SCALE: 1:200 (metric)

PT. S.L. 35	PT. S.L. 34	PT. S.L. 33	PT. S.L. 32	PT. S.L. 31	PT. S.L. 30	PT. S.L. 29
PT. S.L. 35	PT. S.L. 34	PT. S.L. 33	PT. S.L. 32	PT. S.L. 31	PT. S.L. 30	PT. S.L. 29
S.L. 19	S.L. 18	S.L. 17	S.L. 16	S.L. 15	S.L. 14	S.L. 13
S.L. 7	S.L. 6	S.L. 5	S.L. 4	S.L. 3	S.L. 2	S.L. 1
C PARKING				C LOBBY	C PARKING	

Fourth Floor  
Third Floor  
Second Floor  
First Floor  
Garage Level

FIREWALL  
C

WWW.BCS-StrataPlans.com

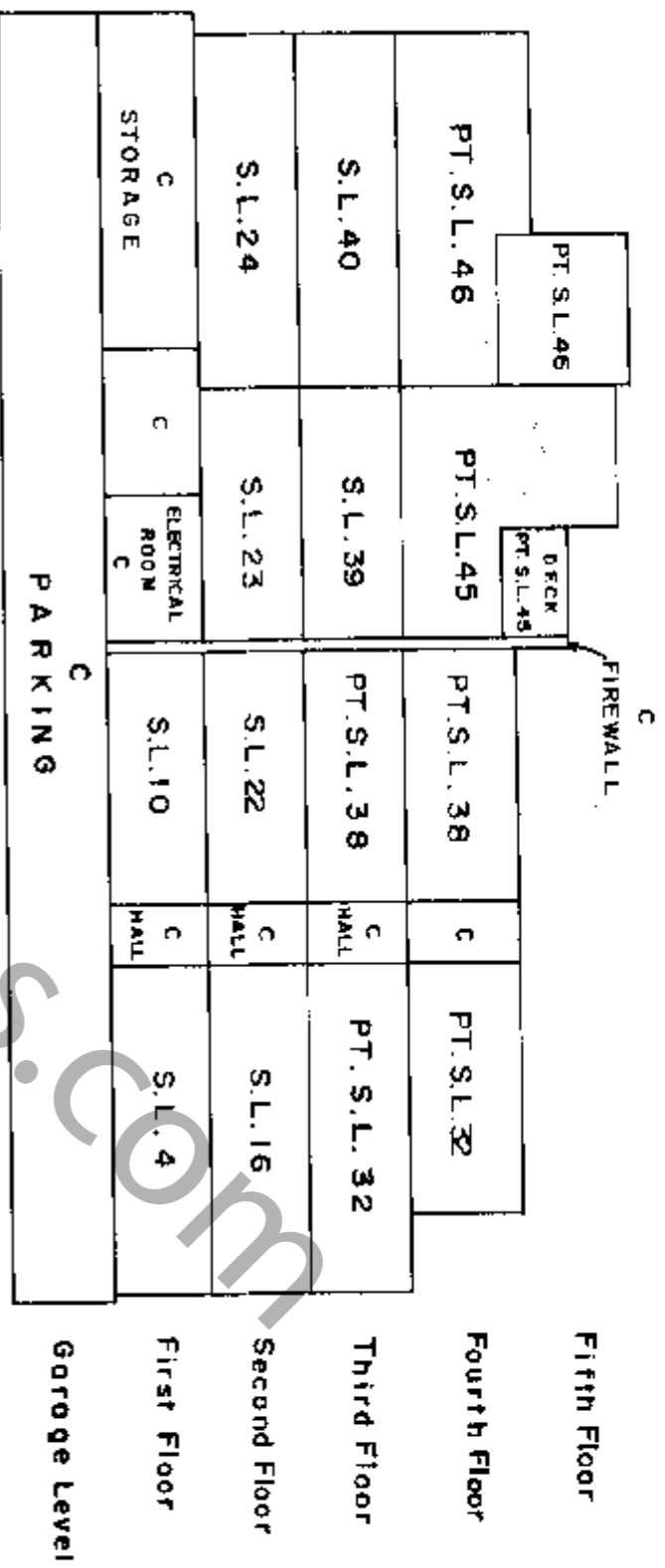
Sheet 11 of 14 Sheets  
STRATA PLAN Y.R. *Miljane*

(J.83164)

December 1st, 1983  
S-3700 ©

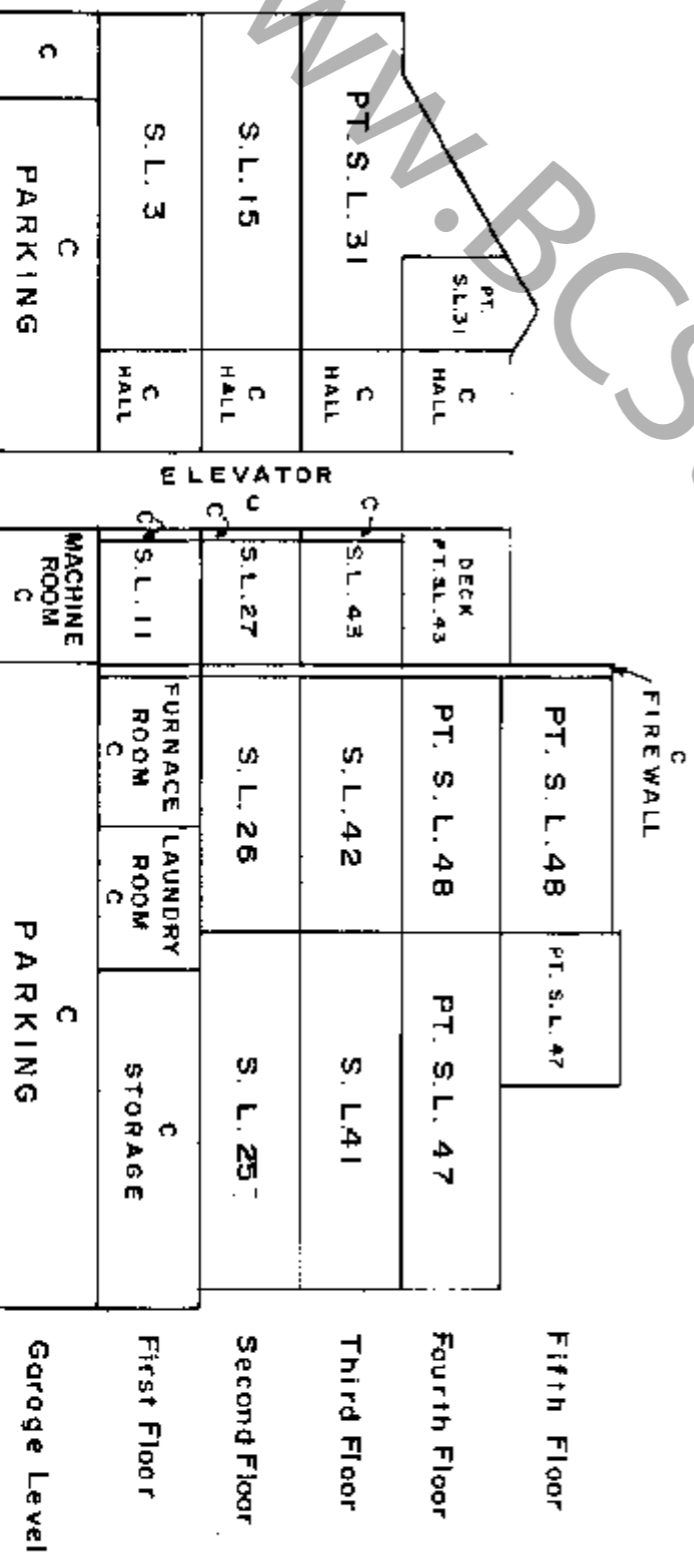
**SECTION C-C**

SCALE : 1 : 200 (metric)



**SECTION D-D**

SCALE : 1 : 200 (metric)



15018 3110

(J.B3164)

December 1st, 1983

S-3700-2

RECORD OF BY-LAWS AND ORDERS, ETC.

FILING		DOCUMENTS			
NUMBER	DATE	DATE	NATURE AND PARTICULARS.		
			<del>Enter Sheet Closed</del>		
			<del>Search ALLIANCE for PRO Outline for</del>		
			<del>Client Information</del> <del>20/03/2009 76/100</del>		

Search ALTOS2 or BC Online for Current Information BC Reg. 76/95

DEALINGS AFFECTING THE COMMON PROPERTY

*Boer*

MINUTE BOOK  
REGISTRATION OF THE INSTRUMENT  
REGISTERED

DOCUMENT  
NATURE AND PARTICULARS

NUMBER	DATE	DATE	NATURE AND PARTICULARS
N154252	21.11.83	@ 9:50	Mortgage - The Royal Bank of Canada Inter Alia
X 8849	27.1.84	@ 9:15	Claim of Builders Lien - Wharoe Gypsum Supplies (B.C.) Ltd. Inter Alia
<del>N 33126</del>	<del>15.06.1984</del>		<del>Inter Alia</del>
<del>N 51005</del>	<del>24.10.82</del>		<del>Mortgage Inter Alia</del>
<del>N 51005</del>	<del>12.41</del>		<del>Inter Alia</del>
<del>N 334448</del>	<del>17.11.1988</del>		<del>Assignment of Rent Voll Share Trust Company (Reg. No. 1027) Inter Alia</del>

9.2.95  
on

