

STRATA PLAN OF LOT 362, SEC. 33, BLOCK 5 N., RGE. 1 W., PLAN 60718, N. W. D.

STRATA PLAN NW 1676

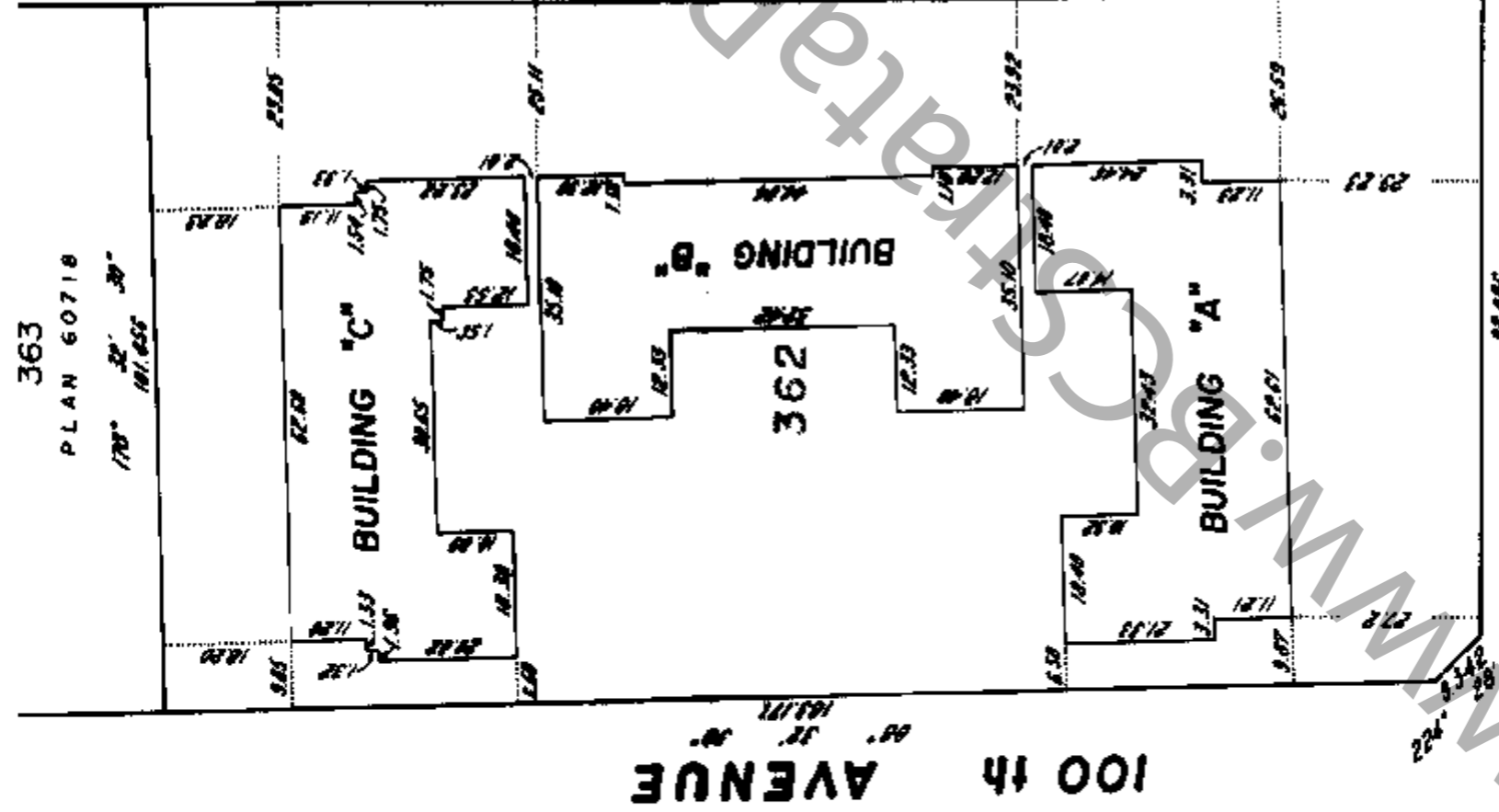
DEPOSITED AND REGISTERED IN
THE LAND TITLE OFFICE OF
NEW WESTMINSTER, B. C.,
THIS 6th DAY OF OCT. 1981



"MUNICIPALITY OF SURREY"

[Signature]
ASSISTANT-DEPUTY REGISTRAR
Ref. T101948

"CEDAR GROVE APARTMENTS"
CIVIC ADDRESSES
BUILDING "A": 15238, 100th AVENUE,
BUILDING "B": 15268, 100th AVENUE,
BUILDING "C": 15288, 100th AVENUE,
SURREY, B. C.



212
PLAN
60058

FOR INTERIOR ANGLES
ON STRATA LOTS 17,
52, 62, 79, 103 AND
105 SEE DEF 7105281

For mailing address of the Strata
Corporation search the Strata Plan
"General Index."

Century 21 Residential Estates (Canada) Ltd
7320 Westminister Hwy.
Richmond, BC V6X 1A1
Change of Address - 601-53984-2005-98

I, J. J. WARD, OF LANGLEY,
BRITISH COLUMBIA LAND SURVEYOR, HEREBY
CERTIFY THAT THE BUILDINGS ERECTED
ON THE PARCEL DESCRIBED ABOVE ARE
WHOLLY WITHIN THE EXTERNAL BOUNDARIES
OF THAT PARCEL.
DATED AT SURREY, B. C.,
THIS 10th DAY OF JULY 1981.

- LEGEND
- S.L. DENOTES STRATA LOT
 - m² DENOTES SQUARE METRES
 - ⊙ DENOTES COMMON PROPERTY
 - ⊙ DENOTES BALCONY

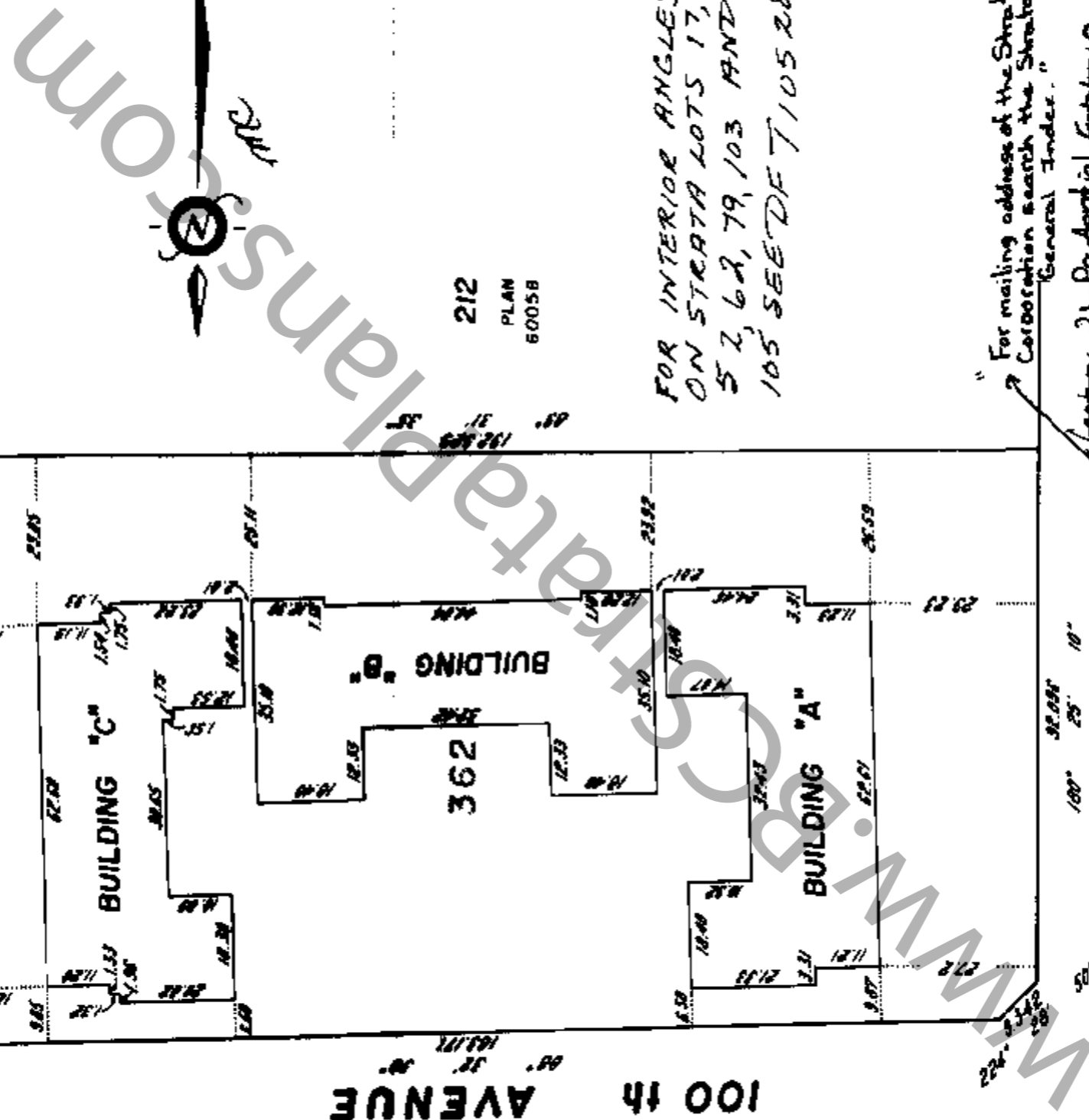
PURSUANT TO SECTION 53 (2), CONDOMINIUM ACT,
EACH BALCONY IS LIMITED COMMON PROPERTY FOR
THE ADJOINING STRATA LOT.

THE ADDRESS FOR SERVICE OF DOCUMENTS
ON THE STRATA CORPORATION IS: *362-16-113*

THE OWNERS, STRATA PLAN NW 1676
~~1-4686, EAST HASTINGS STREET~~
~~BURNABY, B. C. V5G 2K3~~
362-16-113
1-502-274-5097
BURNABY BC V5H 4A5

THIS PLAN LIES WITHIN THE GREATER VANCOUVER REGIONAL DISTRICT.

[Signature] B.C.L.S.
MELNANNEY ASSOCIATES
PROFESSIONAL LAND SURVEYORS
1360 88th AVENUE
SURREY, B.C. V3W 3K3
FILE 003610-1 Am./



STRATA PLAN DLW1676

CONDOMINIUM ACT

LOT NO.	SHEET NO.	FORM 1	FORM 2	FORM 3
		SCHEDULE OF UNIT ENTITLEMENT UNIT ENTITLEMENT	SCHEDULE OF INTEREST UPON DESTRUCTION INTEREST UPON DESTRUCTION	SCHEDULE OF VOTING RIGHTS NUMBER OF VOTES
1	5 and 8	646	675	
2	"	730	710	
3	"	690	683	
4	"	520	551	
5	"	739	743	
6	"	530	551	
7	"	721	710	
8	"	713	710	
9	"	600	589	
10	"	588	589	
11	"	623	589	
12	"	756	710	
13	"	721	710	
14	"	542	547	
15	"	737	743	
16	"	556	551	
17	6 and 8	616	613	
18	6 and 9	646	675	
19	"	743	710	
20	"	630	603	
21	"	920	581	
22	"	739	743	
23	"	530	551	
24	"	721	710	
25	"	724	710	
26	"	600	589	
27	"	588	589	
28	"	623	589	
29	"	767	710	
30	"	721	710	
31	"	542	547	
32	"	737	743	
33	"	540	551	
34	6 and 9	710	615	
35	6 and 10	640	692	
36	"	745	735	
37	"	692	700	
38	"	520	560	
39	"	742	760	
40	"	539	567	
41	"	723	735	
42	"	726	735	
43	"	609	607	
44	"	590	607	
45	"	624	607	
46	"	769	735	
47	"	722	735	
48	"	542	564	
49	"	730	760	
50	6 and 10	541	560	

01-07-10 J.P.N.

FILE 003610-1

STRATA PLAN NW1676

CONDOMINIUM ACT

LOT NO.	SHEET NO.	FORM 1		FORM 2		FORM 3	
		SCHEDULE OF UNIT ENTITLEMENT	UNIT ENTITLEMENT	SCHEDULE OF INTEREST UPON DESTRUCTION	INTEREST UPON DESTRUCTION	SCHEDULE OF VOTING RIGHTS	NUMBER OF VOTES
51	6 and 10		719		632		
52	11 and 13		615		613		
53	"		559		551		
54	"		747		743		
55	"		532		547		
56	"		723		710		
57	"		715		710		
58	"		609		509		
59	"		592		509		
60	"		603		509		
61	"		716		710		
62	"		723		710		
63	"		532		547		
64	"		747		743		
65	"		543		551		
66	"		609		603		
67	"		727		710		
68	11 and 13		647		675		
69	11 and 14		714		615		
70	"		543		551		
71	"		747		743		
72	"		532		547		
73	"		723		710		
74	"		729		710		
75	"		609		509		
76	"		592		509		
77	"		603		509		
78	"		720		710		
79	"		723		710		
80	"		532		547		
81	"		747		743		
82	"		543		551		
83	"		609		603		
84	"		730		710		
85	11 and 14		647		675		
86	11 and 15		716		632		
87	"		545		560		
88	"		740		760		
89	"		532		564		
90	"		724		735		
91	"		730		735		
92	"		610		607		
93	"		593		607		
94	"		604		607		
95	"		729		735		
96	"		724		735		
97	"		532		564		
98	"		740		760		
99	"		545		560		
100	11 and 15		690		700		

STRATA PLAN 11/16/12

CONDOMINIUM ACT

LOT NO.	SHEET NO.	FORM 1		FORM 2		FORM 3	
		SCHEDULE OF UNIT ENTITLEMENT UNIT ENTITLEMENT	SCHEDULE OF INTEREST UPON DESTRUCTION INTEREST UPON DESTRUCTION	SCHEDULE OF INTEREST UPON DESTRUCTION INTEREST UPON DESTRUCTION	SCHEDULE OF VOTING RIGHTS NUMBER OF VOTES		
101	11 and 15	742	735				
102	11 and 15	650	692				
103	16 and 18	619	613				
104	"	556	551				
105	"	743	743				
106	"	520	547				
107	"	782	710				
108	"	727	710				
109	"	530	509				
110	"	533	509				
111	"	603	509				
112	"	719	710				
113	"	724	710				
114	"	537	551				
115	"	744	743				
116	"	545	551				
117	"	605	603				
118	"	717	710				
119	16 and 18	637	675				
120	16 and 19	710	615				
121	"	500	551				
122	"	743	743				
123	"	520	547				
124	"	722	710				
125	"	740	710				
126	"	530	509				
127	"	533	509				
128	"	603	509				
129	"	733	710				
130	"	724	710				
131	"	537	551				
132	"	744	743				
133	"	545	551				
134	"	605	603				
135	"	729	710				
136	16 and 19	637	675				
137	16 and 20	719	632				
138	"	541	560				
139	"	744	760				
140	"	520	564				
141	"	724	735				
142	"	742	735				
143	"	539	607				
144	"	534	607				
145	"	604	607				
146	"	735	735				
147	"	724	735				
148	"	537	567				
149	"	746	760				
150	"	547	560				
151	"	607	700				
152	"	732	735				
153	16 and 20	640	692				
AGGREGATES		100,000	100,000				

STRATA PLAN NW1676

CONDOMINIUM ACT

STATUTORY DECLARATION

I, THE UNDERSIGNED, DO SOLEMNLY DECLARE THAT
 (1) I, THE UNDERSIGNED, AM THE DULY AUTHORIZED AGENT OF THE OWNER-DEVELOPER.
 (2) THE STRATA PLAN IS ENTIRELY FOR RESIDENTIAL USE.
 I MAKE THIS SOLEMN DECLARATION CONSCIENTIOUSLY BELIEVING IT TO BE TRUE AND KNOWING THAT IT IS OF THE SAME FORCE AND EFFECT AS IF MADE UNDER OATH.



DECLARED BEFORE ME AT Vancouver
 IN THE PROVINCE OF BRITISH COLUMBIA
 THIS 21 DAY OF September 1981.


 A COMMISSIONER FOR TAKING AFFIDAVITS
 WITHIN THE PROVINCE OF BRITISH COLUMBIA

ACCEPTED AS TO FORMS 1 AND 2.


 SUPERINTENDENT OF INSURANCE
 THIS 29 DAY OF September 1981.

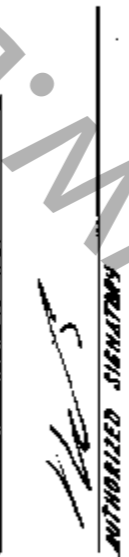
OWNER

BROTHERS DEVELOPMENT CORPORATION


 AUTHORIZED SIGNATORY

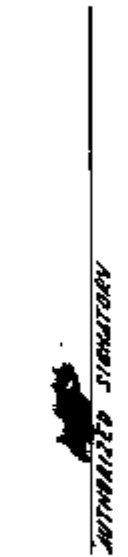

 AUTHORIZED SIGNATORY

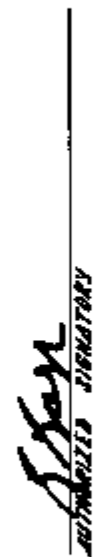
J. J. R. DEVELOPMENTS LTD.


 AUTHORIZED SIGNATORY


 AUTHORIZED SIGNATORY

S. DANIELE LIMITED

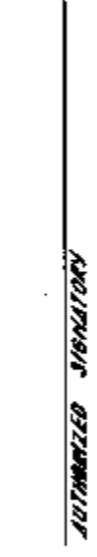

 AUTHORIZED SIGNATORY


 AUTHORIZED SIGNATORY

MORTGAGEES

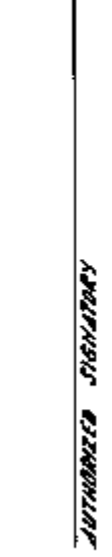
BANCORP FINANCIAL LIMITED


 AUTHORIZED SIGNATORY


 AUTHORIZED SIGNATORY

CENTRAL FINANCIAL CORPORATION LTD.


 AUTHORIZED SIGNATORY

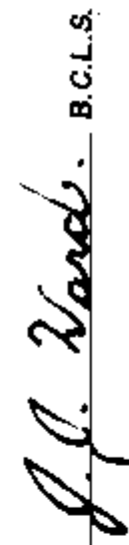

 AUTHORIZED SIGNATORY

THE MARITIME LIFE ASSURANCE COMPANY


 AUTHORIZED SIGNATORY


 AUTHORIZED SIGNATORY

I, J. J. WARD, BRITISH COLUMBIA LAND SURVEYOR,
 HEREBY CERTIFY THAT THE BUILDINGS SHOWN IN THIS STRATA
 PLAN HAVE NOT, AS OF THE 10th OF JULY 1981,
 BEEN PREVIOUSLY OCCUPIED.
 DATED AT SURREY, B. C., THIS 10th DAY OF JULY 1981.


 J. J. Ward. B.C.L.S.

WWW.NWNWS.COM Strata Plans

STRATA PLAN Nw1676

SHEET 6 OF 22 SHEETS

N. 17-0
1.8.26

SECTION D-D

BASEMENT		PARKING	
1st FLOOR	S.L. 16	S.L. 15	
2nd FLOOR	S.L. 33	S.L. 32	
3rd FLOOR	S.L. 50	S.L. 49	

SECTION C-C

BASEMENT		PARKING	
1st FLOOR	S.L. 5	S.L. 4	
2nd FLOOR	S.L. 22	S.L. 21	
3rd FLOOR	S.L. 39	S.L. 38	

BUILDING "A" SECTIONS

SCALE 1:200

SECTION B-B

BASEMENT		PARKING		PARKING		PARKING		PARKING		PARKING		PARKING		PARKING	
1st FLOOR	S.L. 6	S.L. 3	S.L. 2	S.L. 1	S.L. 17	S.L. 14	CONCRETE	CONCRETE	CONCRETE	CONCRETE	CONCRETE	CONCRETE	CONCRETE	CONCRETE	CONCRETE
2nd FLOOR	S.L. 23	S.L. 20	S.L. 19	S.L. 18	S.L. 34	S.L. 31	CONCRETE	CONCRETE	CONCRETE	CONCRETE	CONCRETE	CONCRETE	CONCRETE	CONCRETE	CONCRETE
3rd FLOOR	S.L. 40	S.L. 37	S.L. 36	S.L. 35	S.L. 51	S.L. 48	CONCRETE	CONCRETE	CONCRETE	CONCRETE	CONCRETE	CONCRETE	CONCRETE	CONCRETE	CONCRETE

SECTION A-A

BASEMENT							PARKING								
1st FLOOR	S.L. 7	S.L. 8	S.L. 9	S.L. 10	S.L. 11	S.L. 12	S.L. 13	S.L. 24	S.L. 25	S.L. 26	S.L. 27	S.L. 28	S.L. 29	S.L. 30	S.L. 31
2nd FLOOR	S.L. 41	S.L. 42	S.L. 43	S.L. 44	S.L. 45	S.L. 46	S.L. 47	S.L. 58	S.L. 59	S.L. 60	S.L. 61	S.L. 62	S.L. 63	S.L. 64	S.L. 65
3rd FLOOR	S.L. 71	S.L. 72	S.L. 73	S.L. 74	S.L. 75	S.L. 76	S.L. 77	S.L. 88	S.L. 89	S.L. 90	S.L. 91	S.L. 92	S.L. 93	S.L. 94	S.L. 95

FILE 003010 - 1

STRATA PLAN

N.W. 1/4 Sec. 16

Section line A-A

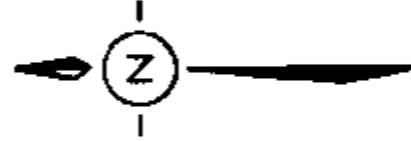
Section line B-B

Section line C-C

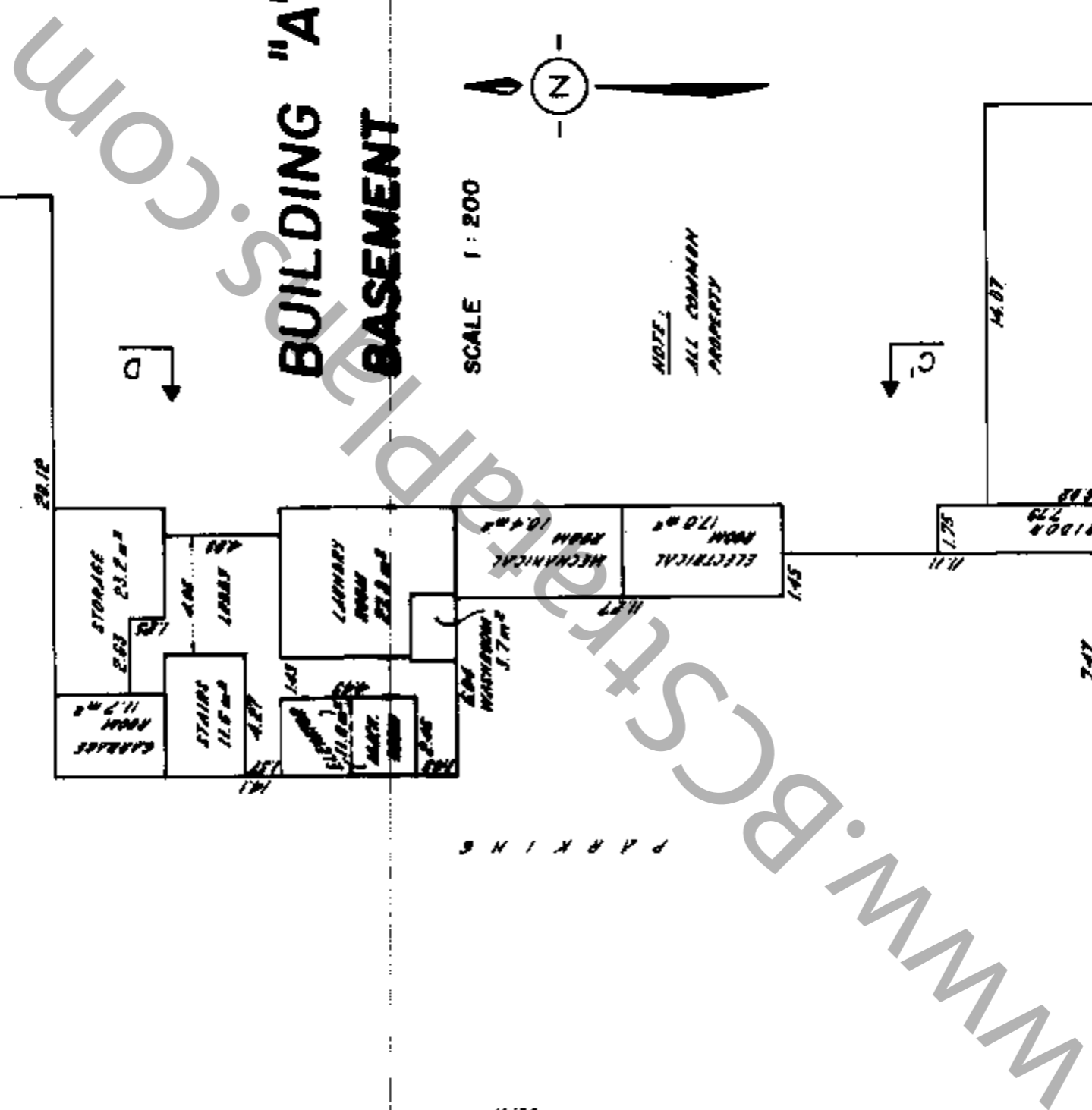
Section line D-D

BUILDING "A" BASEMENT

SCALE 1:200



NOTE:
ALL COMMON
PROPERTY



11.2

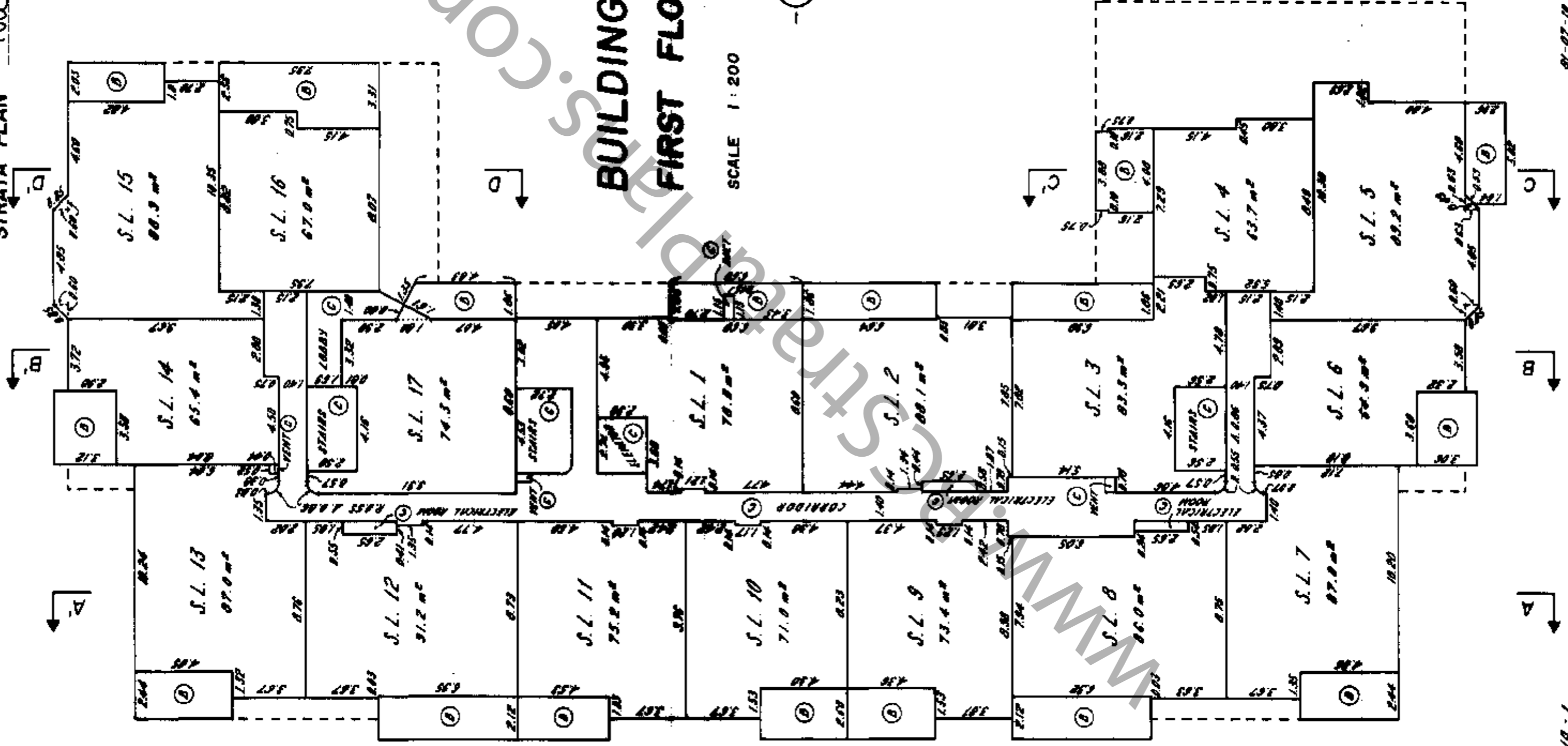
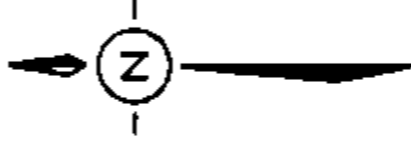
01-17-10

FILE 00310 - 1 - 018500 3714

STRATA PLAN NW 1676

BUILDING "A" FIRST FLOOR

SCALE 1:200



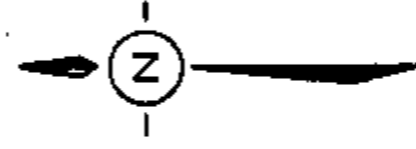
9.1.2.

01-07-10

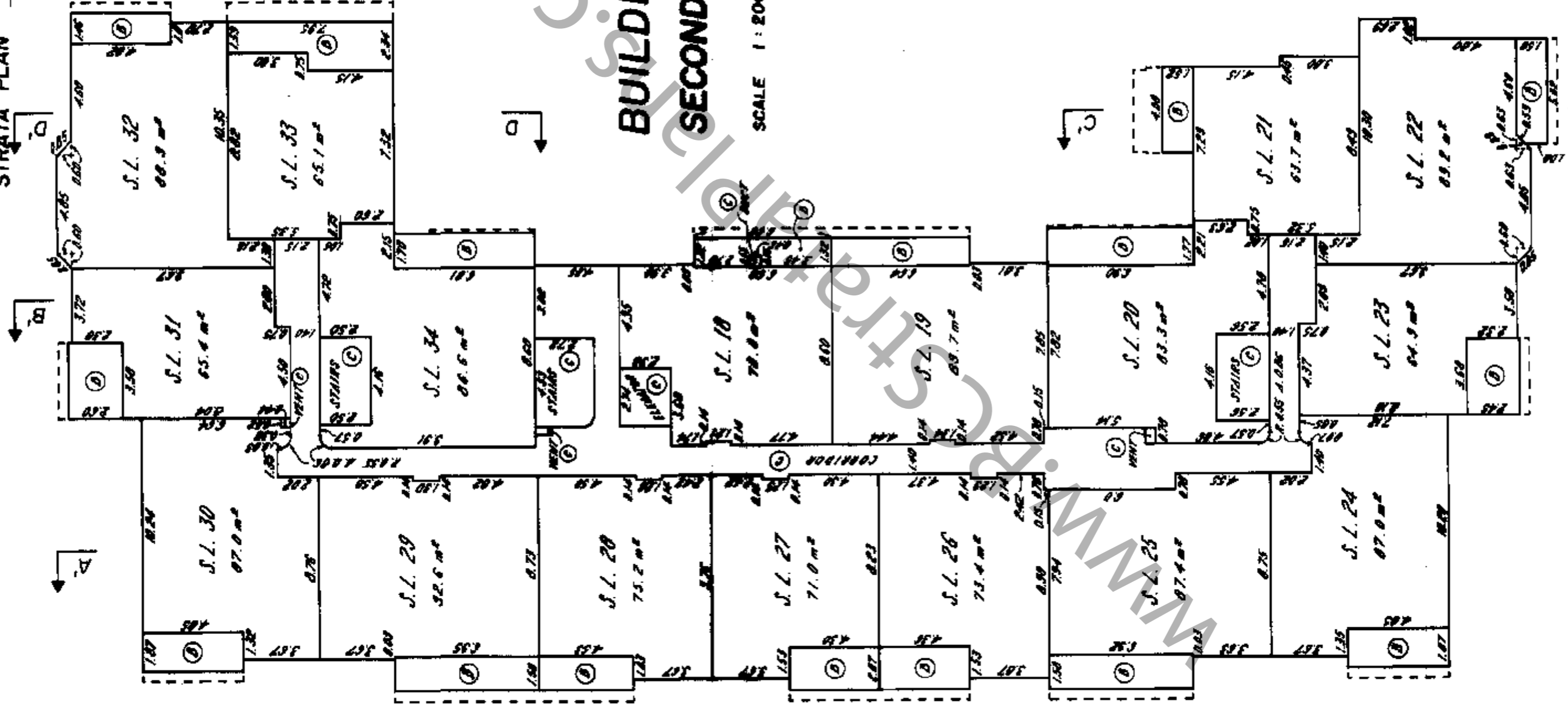
FILE 003010 - 1

STRATA PLAN NWA1676

BUILDING "A" SECOND FLOOR



SCALE 1:200



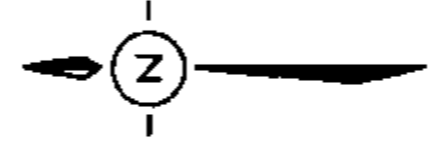
J.P.D.

01-07-0

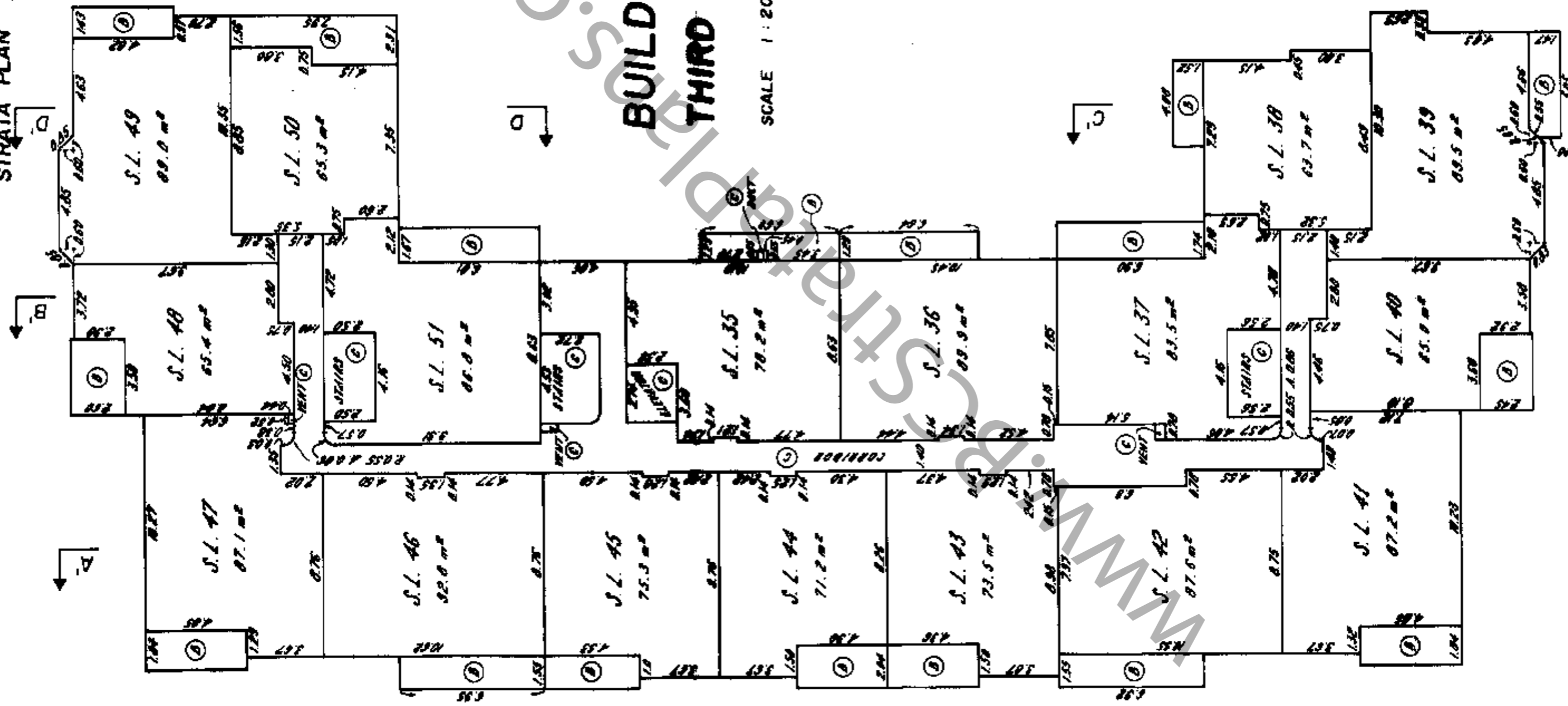
FILE 000010-1

STRATA PLAN NW11676

BUILDING "A" THIRD FLOOR



SCALE 1:200



8.1.20

N - 07 - N

FILE 003670 - 1

STRATA PLAN NW 1676

SECTION H-H

BASMENT						
PARKING						
1ST FLOOR	S.L. 56	S.L. 57	S.L. 58	S.L. 59	S.L. 60	S.L. 61
2ND FLOOR	S.L. 73	S.L. 74	S.L. 75	S.L. 76	S.L. 77	S.L. 78
3RD FLOOR	S.L. 90	S.L. 91	S.L. 92	S.L. 93	S.L. 94	S.L. 95

SECTION G-G

BASMENT						
PARKING		STORAGE	LAUNDRY	LAUNDRY	PARKING	
1ST FLOOR	S.L. 53	S.L. 52	S.L. 68	S.L. 67	S.L. 66	S.L. 63
2ND FLOOR	S.L. 80	S.L. 69	S.L. 85	S.L. 84	S.L. 83	S.L. 80
3RD FLOOR	S.L. 97	S.L. 86	S.L. 102	S.L. 101	S.L. 100	S.L. 97

SECTION F-F

BASMENT	
PARKING	
1ST FLOOR	S.L. 54
2ND FLOOR	S.L. 71
3RD FLOOR	S.L. 88

BUILDING "B"
SECTIONS

SCALE 1:200

SECTION E-E

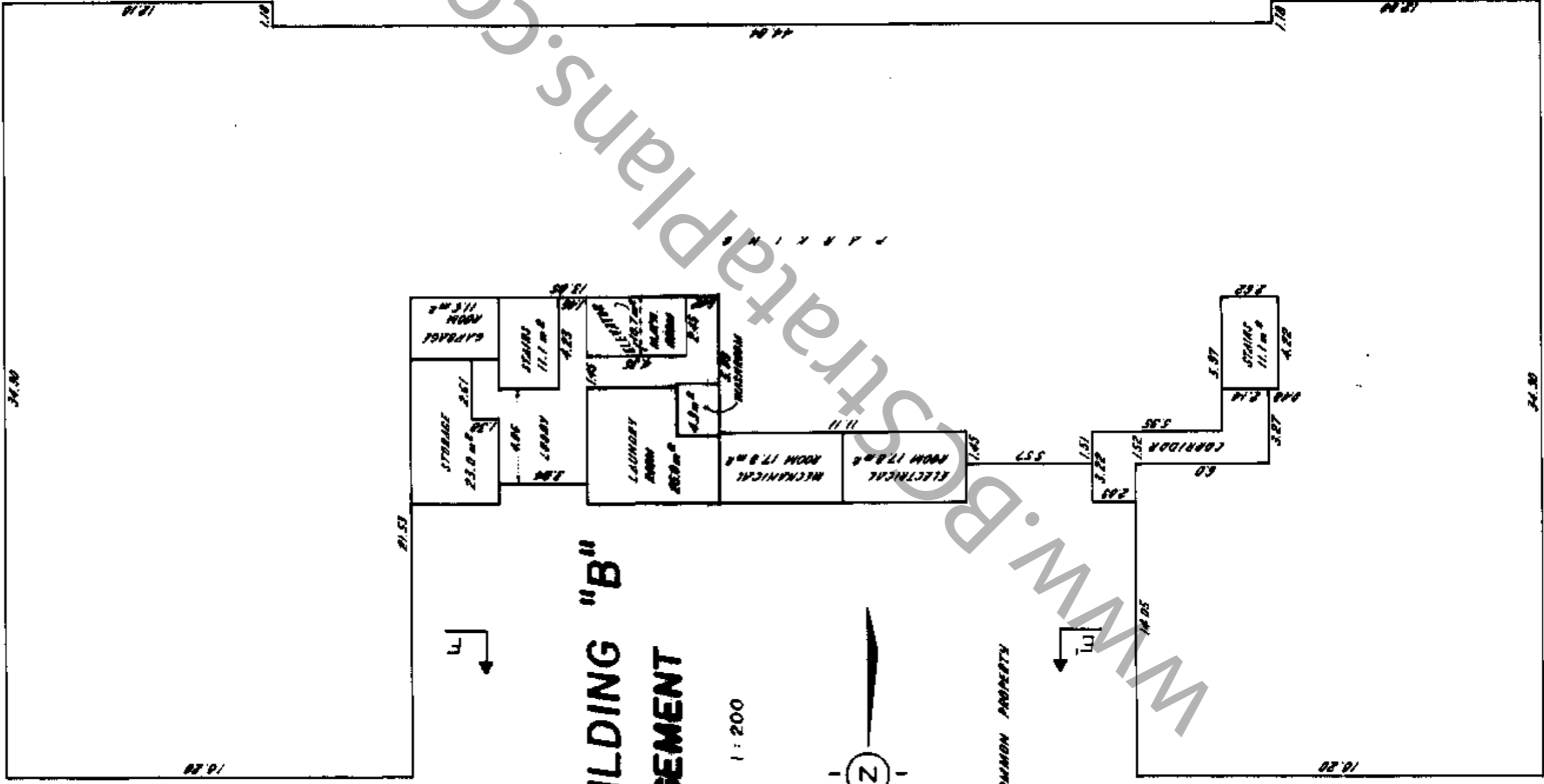
BASMENT	
PARKING	
1ST FLOOR	S.L. 64
2ND FLOOR	S.L. 81
3RD FLOOR	S.L. 98

11.2

10-07-00

FILE 003610-1

STRATA PLAN *Alwika*



BUILDING "B" BASEMENT

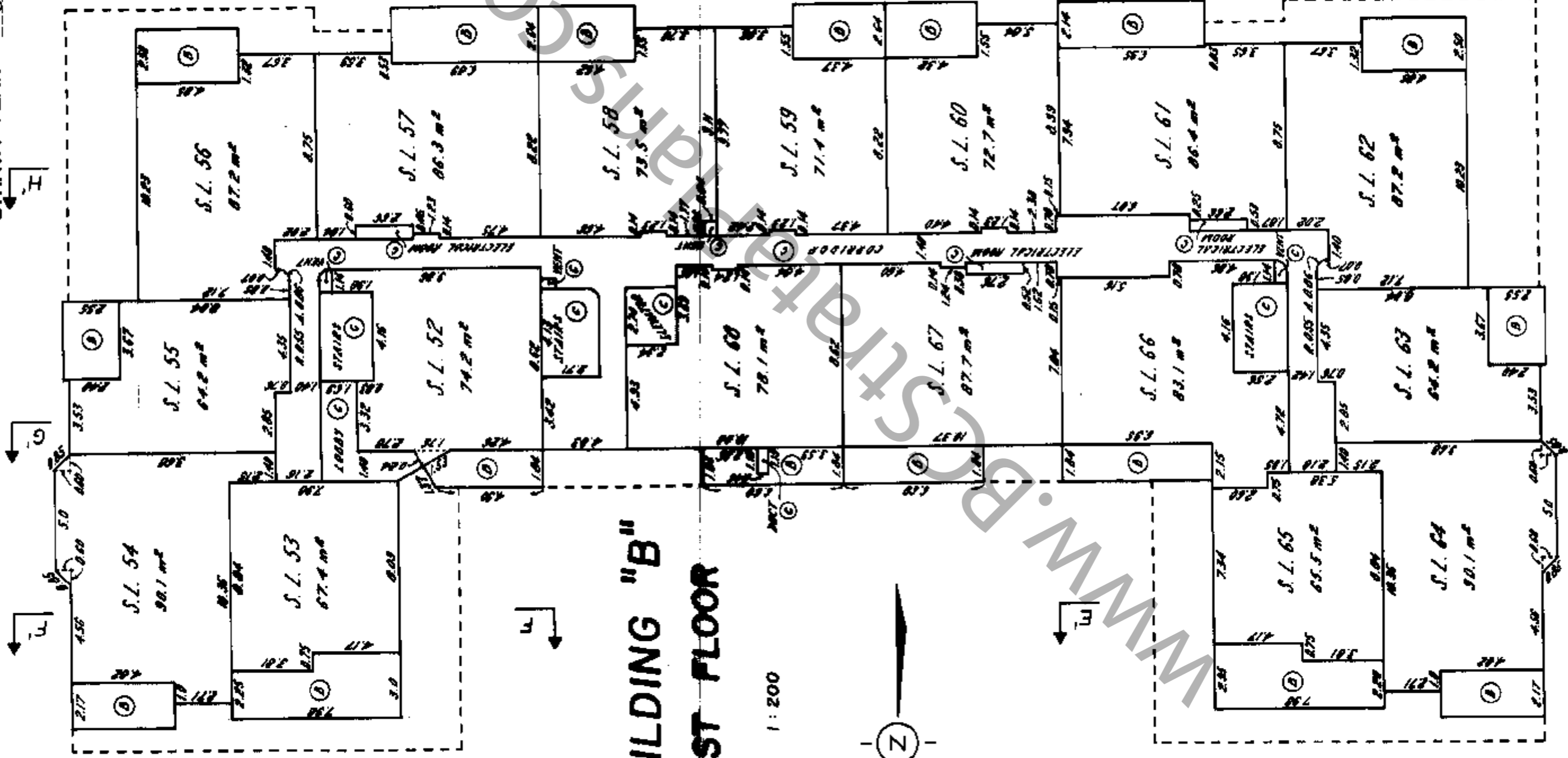
SCALE 1 : 200



NOTE:
ALL COMMON PROPERTY

www.B.Strataplans.com

STRATA PLAN *NW1676*



BUILDING "B" FIRST FLOOR

SCALE 1 : 200



P.P. 2

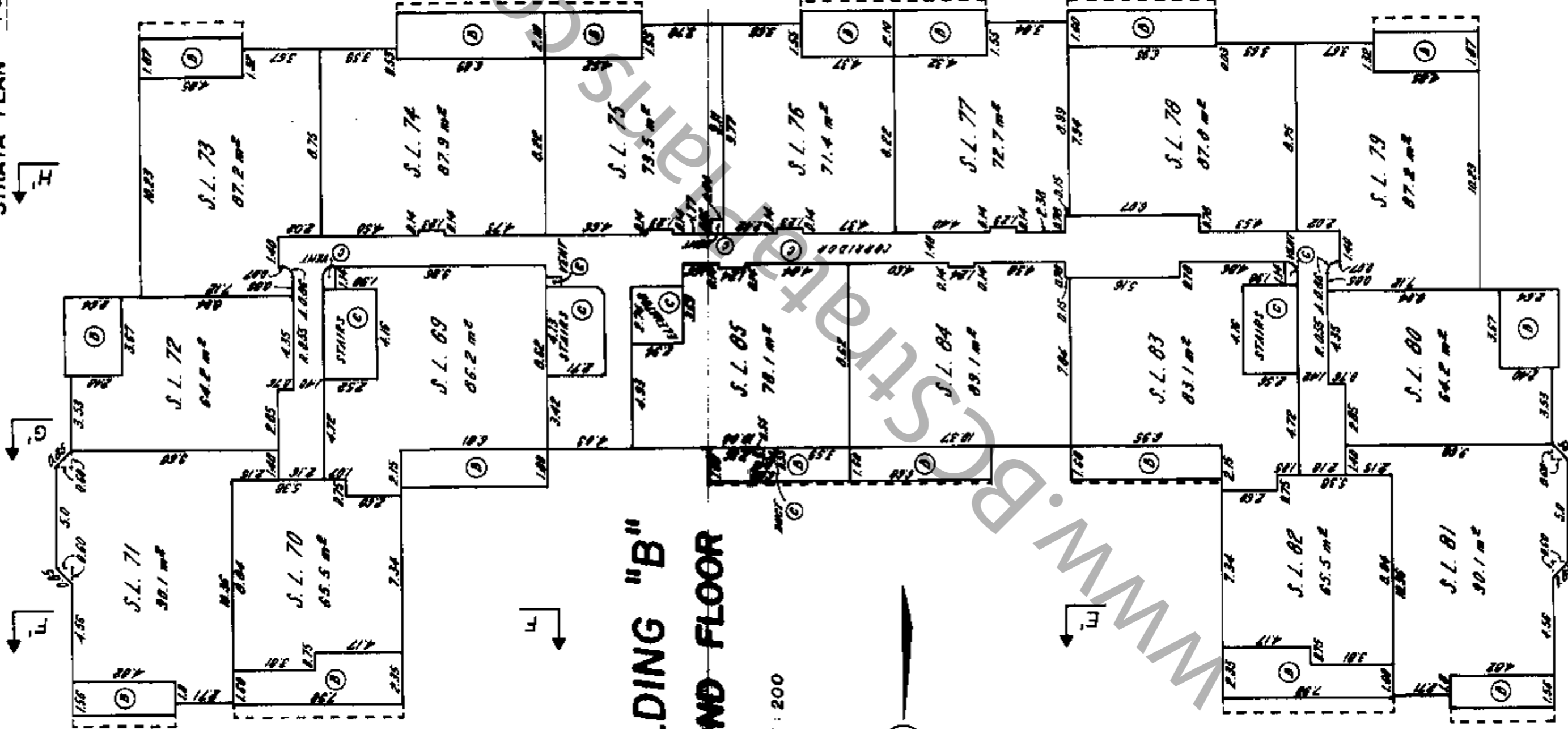
01-07-N

F

G

M

STRATA PLAN NW1676

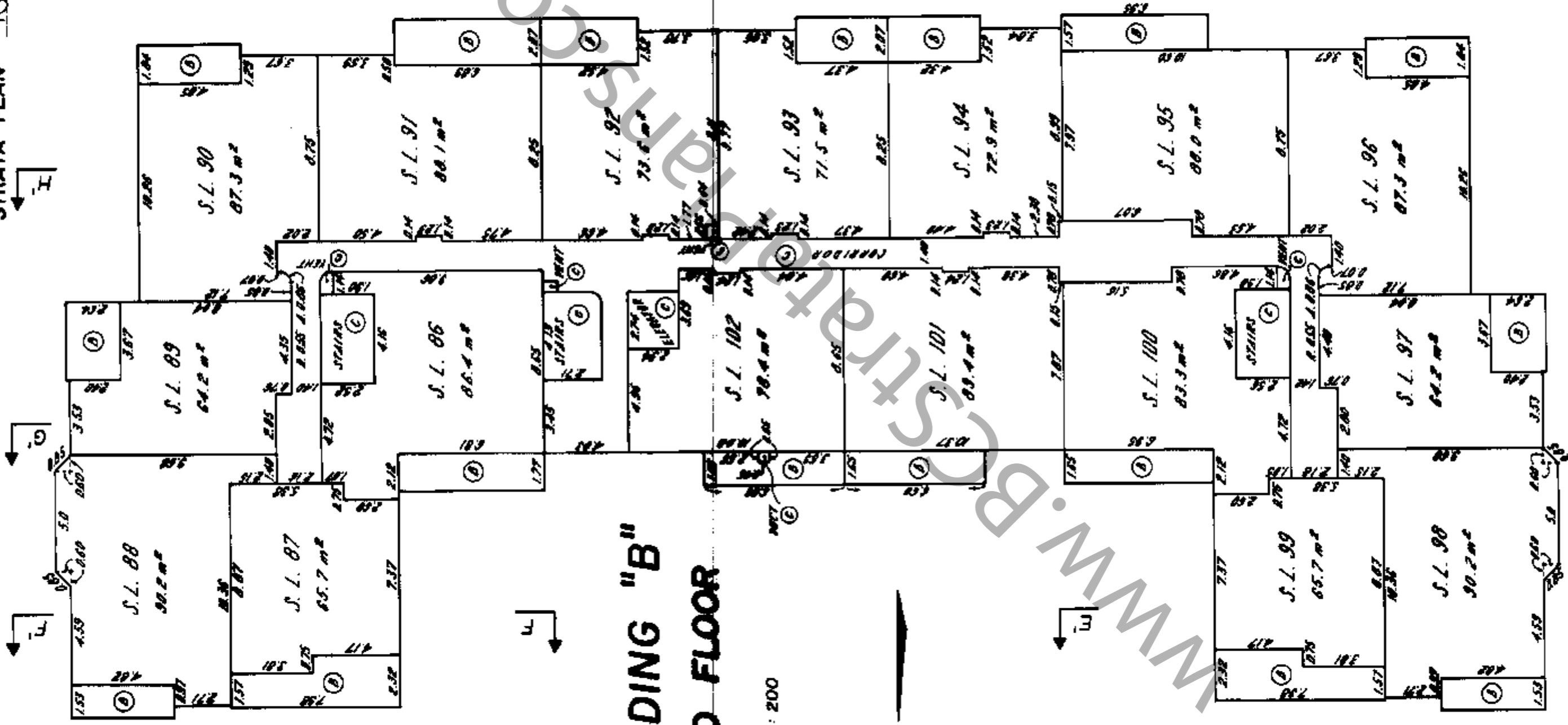


BUILDING "B" SECOND FLOOR

SCALE 1:200



STRATA PLAN NO. 1616



BUILDING "B" THIRD FLOOR

SCALE 1:200



STRATA PLAN N.W. 1676

11.2

81-07-0

SECTION L-L

PARKING							BASMENT
S.L. 107	S.L. 108	S.L. 109	S.L. 110	S.L. 111	S.L. 112	S.L. 113	1ST FLOOR
S.L. 124	S.L. 125	S.L. 126	S.L. 127	S.L. 128	S.L. 129	S.L. 130	2ND FLOOR
S.L. 141	S.L. 142	S.L. 143	S.L. 144	S.L. 145	S.L. 146	S.L. 147	3RD FLOOR

SECTION K-K

PARKING		STORAGE	LOBBY	LOBBY	PARKING		LOBBY	BASMENT
S.L. 106	S.L. 103	S.L. 103	S.L. 119	S.L. 118	S.L. 117	S.L. 114	S.L. 114	1ST FLOOR
S.L. 123	S.L. 120	S.L. 120	S.L. 136	S.L. 135	S.L. 134	S.L. 131	S.L. 131	2ND FLOOR
S.L. 140	S.L. 137	S.L. 137	S.L. 153	S.L. 152	S.L. 151	S.L. 148	S.L. 148	3RD FLOOR

SECTION J-J

PARKING		BASMENT
S.L. 105	S.L. 104	1ST FLOOR
S.L. 122	S.L. 121	2ND FLOOR
S.L. 139	S.L. 138	3RD FLOOR

BUILDING "C" SECTIONS

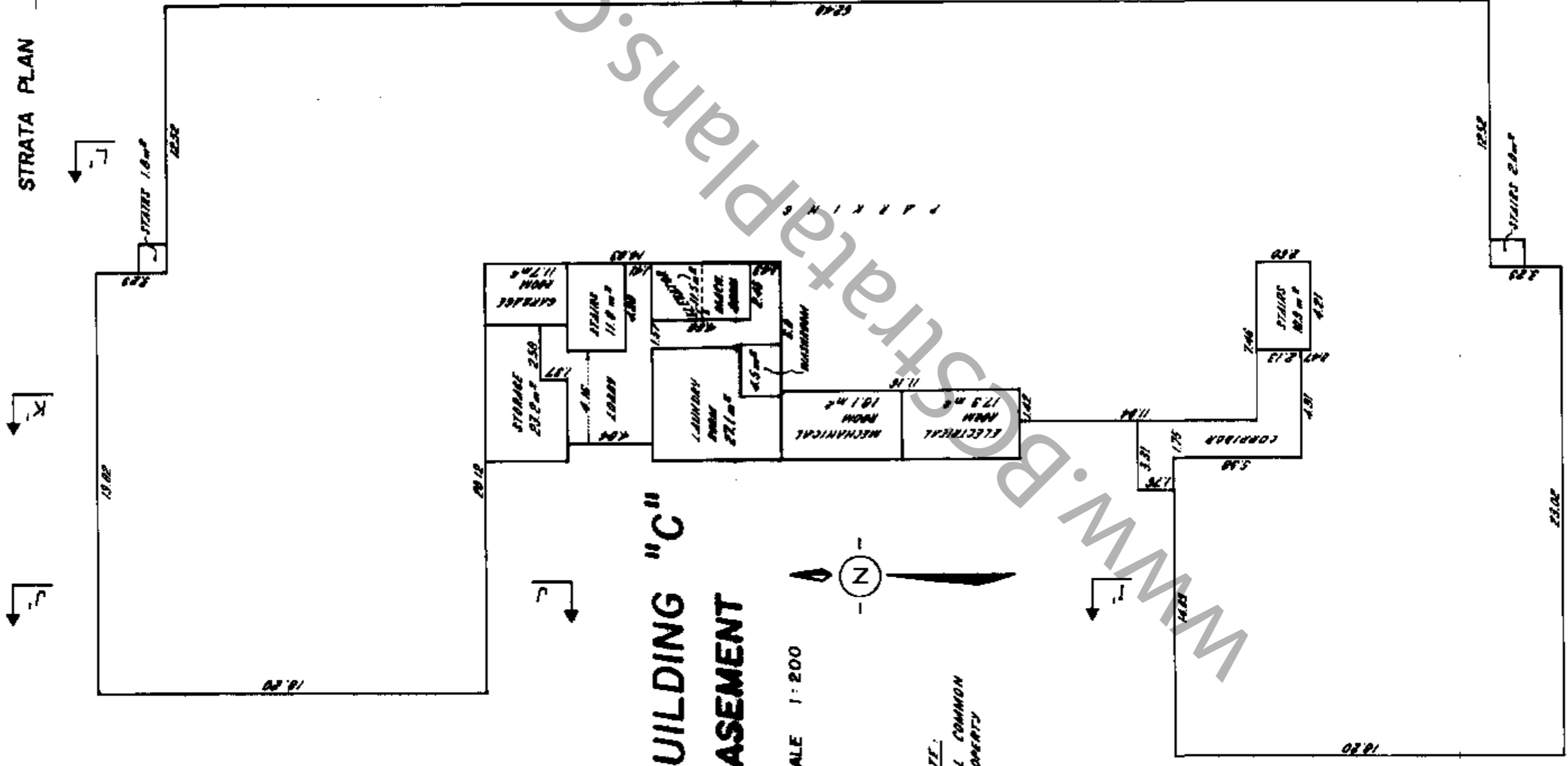
SCALE 1:200

SECTION I-I

PARKING		BASMENT
S.L. 115	S.L. 116	1ST FLOOR
S.L. 132	S.L. 133	2ND FLOOR
S.L. 149	S.L. 150	3RD FLOOR

FILE 003010 - 1

STRATA PLAN NW1676



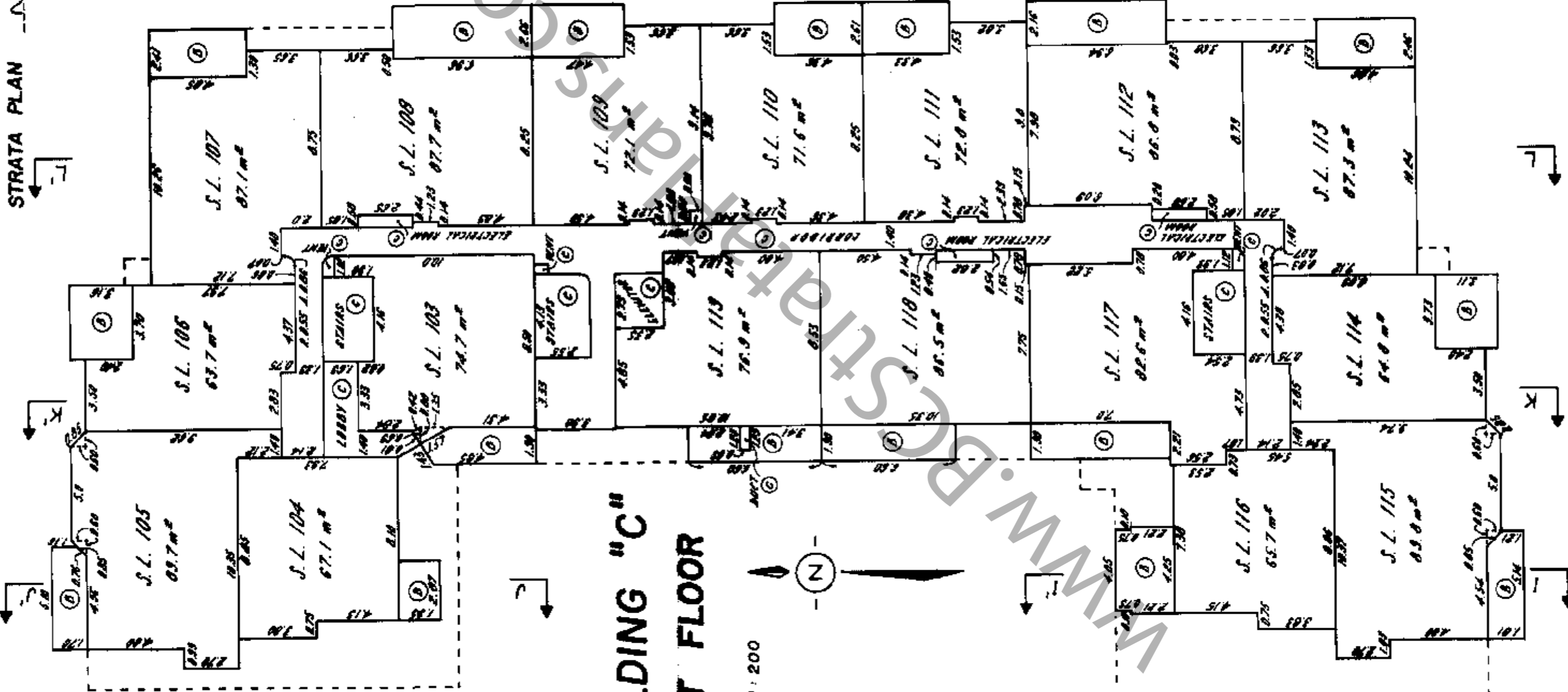
BUILDING "C" BASEMENT

SCALE 1:200

NOTE:
ALL COMMON
PROPERTY

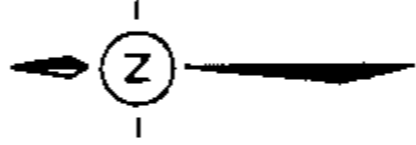
WWW.B.Strataplans.com

STRATA PLAN



BUILDING "C" FIRST FLOOR

SCALE 1:200



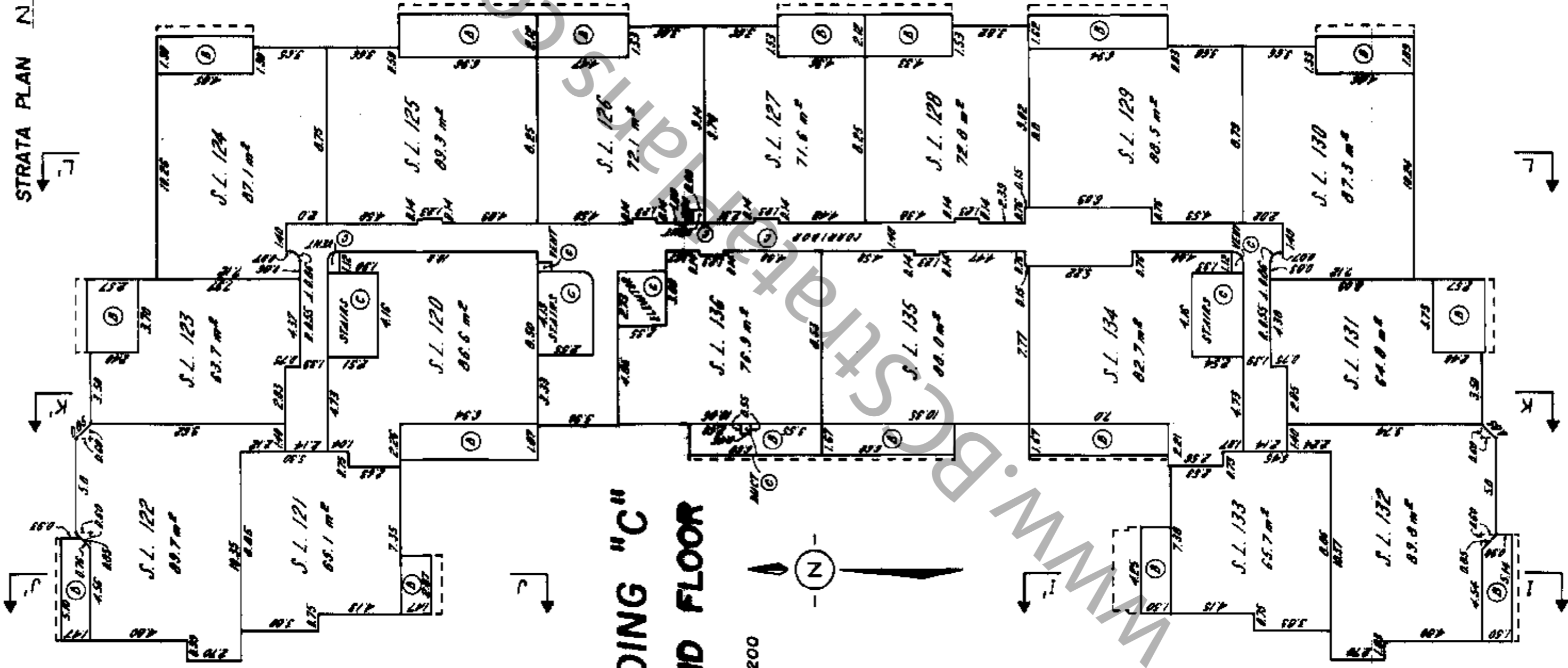
8.12

01-07-08

FILE 003610-1

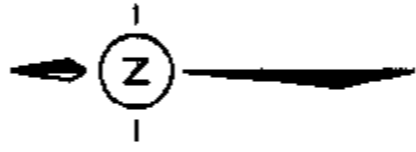
178.814

STRATA PLAN N.W. 1676

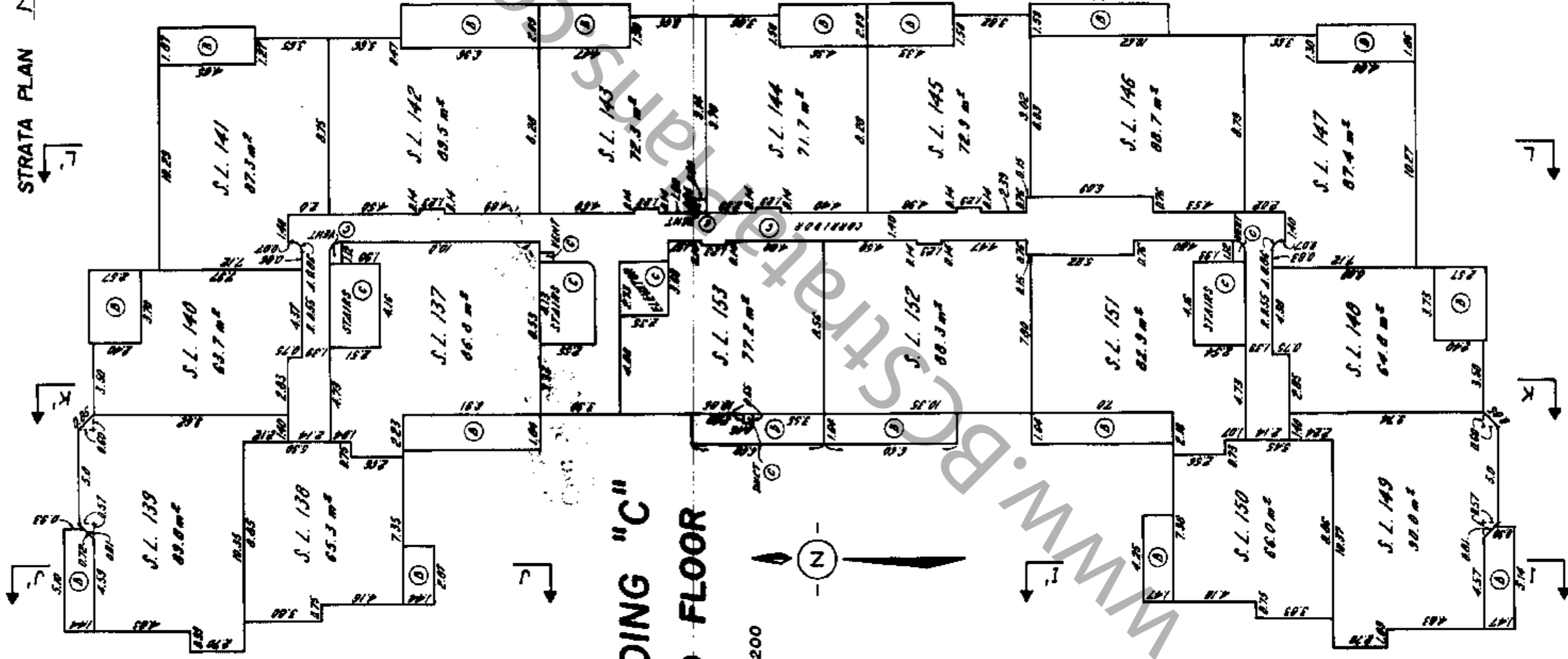


BUILDING "C" SECOND FLOOR

SCALE 1:200

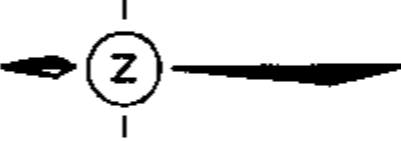


STRATA PLAN N.W. 1676



BUILDING "C"
THIRD FLOOR

SCALE 1:200



113

STRATA PLAN NW 1676

RECORD OF BY-LAWS AND ORDERS, ETC.

FILING		DOCUMENT	
NUMBER	DATE	DATE	NATURE AND PARTICULARS
BE 53247	13.08.1991	01/4/89	Change of Bylaws
BG165854	17/5/93	19/5/93	Change of Bylaws / B
BK148776	16.5.96		NOTIFICATION OF CHANGE OF BYLAWS
			Bylaw Sheet Closed
			Bylaw Sheet for BC OnLine for Search ALFOS2 of BC Reg 7695
			Current Information BC Reg 7695

STRATA PLAN N16247

DEALINGS AFFECTING THE COMMON PROPERTY

Current Property Sheet Closed 15/11/95

Search ALTO52 or BC OnLine for Current Information. BC Reg. 7605

Wolfe

LINDA J. O'SHEA, Registrar
Vancouver (New Westminster) Land Title Division

REGISTRATIONS

NUMBER	DATE	DATE	DOCUMENT
			NATURE AND PARTICULARS
AA162178	25.08.1987	14:29	MORTGAGE THE MARITIME LIFE ASSURANCE COMPANY
" cancelled	AD110999	"	
	24.04.1990		EXTENSION AND MODIFICATION OF T30344 (SEE T12678 AND AA 27475 INTER ALIA
AA162179	29.08.1987	14:30	ASSIGNMENT OF THE MARITIME LIFE ASSURANCE COMPANY
" cancelled	AD112556	"	
	24.04.1990		EXTENSION AND MODIFICATION OF AA 27476 INTER ALIA
T84068 -	30.07.81		S.R.W. B.C. Telephone Company
	11.92		T.A.

-21-2-95