

**STRATA PLAN OF PART OF
LOT 5, SECTION 15, BLOCK
5 NORTH, RANGE 2 WEST
N.W.D., PLAN LMP 3367**

**STRATA PLAN LMS 2093
PHASE 1**

DEPOSITED AND REGISTERED IN THE LAND
TITLE OFFICE, AT NEW WESTMINSTER, B.C.
THIS 17 DAY OF AUG, 1995.

Form E- JG 244434
AMENDED FORM E - BL299502

B.C.G.S. 92G.026

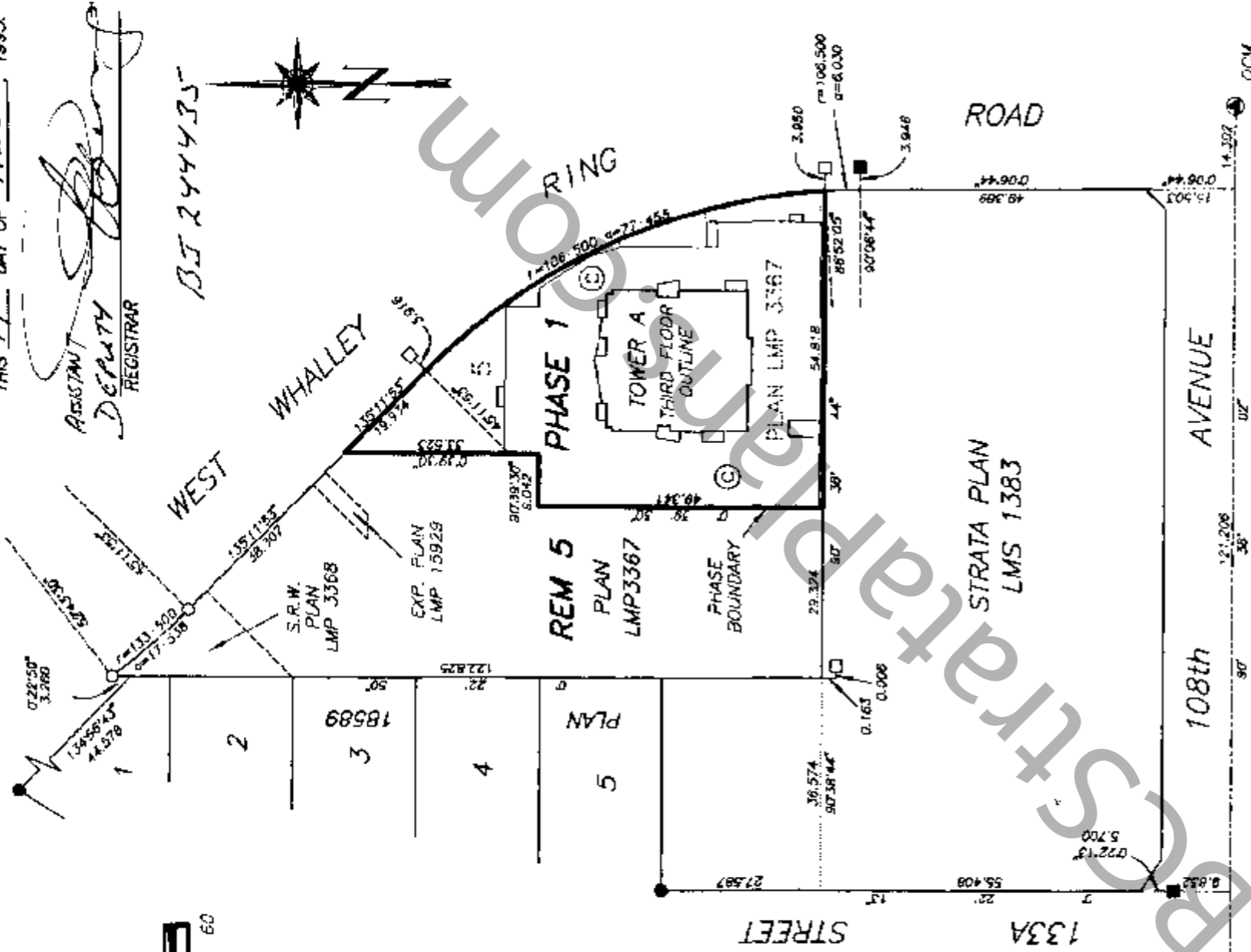
"CITY OF SURREY"

SCALE 1:1000



ALL DISTANCES ARE IN METRES.

"OBSERVATORY"
10889 WEST WHALLEY RING ROAD
SURREY, B.C.



THE ADDRESS FOR THE SERVICE OF DOCUMENTS
ON THE STRATA CORPORATION IS :

THE OWNERS STRATA PLAN LMS 2093
SUITE 800 - 200 BURRARD STREET,
VANCOUVER, B.C.

THIS STRATA PLAN CONTAINS LIMITED COMMON
PROPERTY ACCORDING TO SEC. 53 (2) OF
THE CONDOMINIUM ACT.

I, HEREBY CERTIFY THAT THE COMMON FACILITY,
LEANS COURT, WHICH ACCORDING TO
FORM "E" TO THE ACT, WAS TO HAVE BEEN
CONSTRUCTED IN CONJUNCTION WITH THIS PHASE
HAS BEEN SATISFACTORILY PROVIDED FOR
THIS 17 DAY OF August, 1995.

APPROVING OFFICER FOR THE CITY OF SURREY
APPROVED AS PHASE 1 OF A 2 PHASE
STRATA PLAN UNDER THE CONDOMINIUM ACT.
THIS 17 DAY OF August, 1995.

APPROVING OFFICER FOR THE CITY OF SURREY
I, MIKE E. SHAW, A BRITISH COLUMBIA LAND SURVEYOR
OF LANGLEY IN BRITISH COLUMBIA, HEREBY CERTIFY THAT
THE BUILDINGS ERRECTED ON THE PARCEL DESCRIBED ABOVE
ARE WHOLLY WITHIN THE EXTERNAL BOUNDARIES OF THAT PARCEL
DATED AT SURREY, B.C.

THIS 31st DAY OF JULY, 1995.
Mike E Shaw
B.C.L.S.

BENNETT & ASSOCIATES
B.C. LAND SURVEYORS
#201-9547 152nd STREET,
SURREY, B.C.
PHONE : 562-0717

DRAWING # 30062-6
FILE # 30062-6.DWG
DATE : JULY 31, 1995.

INTEGRATED SURVEY AREA NO. 1 SURREY NAD 83

THIS PLAN SHOWS GROUND-LEVEL MEASURED DISTANCES PRIOR TO COMPUTATION
OF U.T.M. CO-ORDINATES MULTIPLY BY COMBINED SCALE FACTOR 0.9995928.

LEGEND

GRD BEARINGS ARE DERIVED FROM OBSERVATIONS
BETWEEN CONTROL MONUMENTS No. 5060 AND 5359

- - DENOTES CONTROL MONUMENT FOUND
- - DENOTES LEAD PLUG FOUND
- - DENOTES LEAD PLUG PLACED
- - DENOTES STANDARD IRON POST FOUND
- - DENOTES STANDARD IRON POST PLACED
- SL - DENOTES STRATA LOT
- ⊙ - DENOTES COMMON PROPERTY
- ⊖ - DENOTES ELECTRICAL ROOM BEING COMMON PROPERTY
- ⊕ - DENOTES VENT BEING COMMON PROPERTY
- ⊗ - DENOTES BALCONY BEING LIMITED COMMON PROPERTY FOR THE EXCLUSIVE USE OF SL 75
- ⊘ - DENOTES PATIO BEING LIMITED COMMON PROPERTY FOR THE EXCLUSIVE USE OF SL 1
- ⊙ - DENOTES ROOF DECK BEING LIMITED COMMON PROPERTY FOR THE EXCLUSIVE USE OF SL 122
- ⊙ - DENOTES PARKING STALL BEING LIMITED COMMON PROPERTY FOR THE EXCLUSIVE USE OF SL 1

THIS PLAN LIES WITHIN THE GREATER VANCOUVER REGIONAL DISTRICT

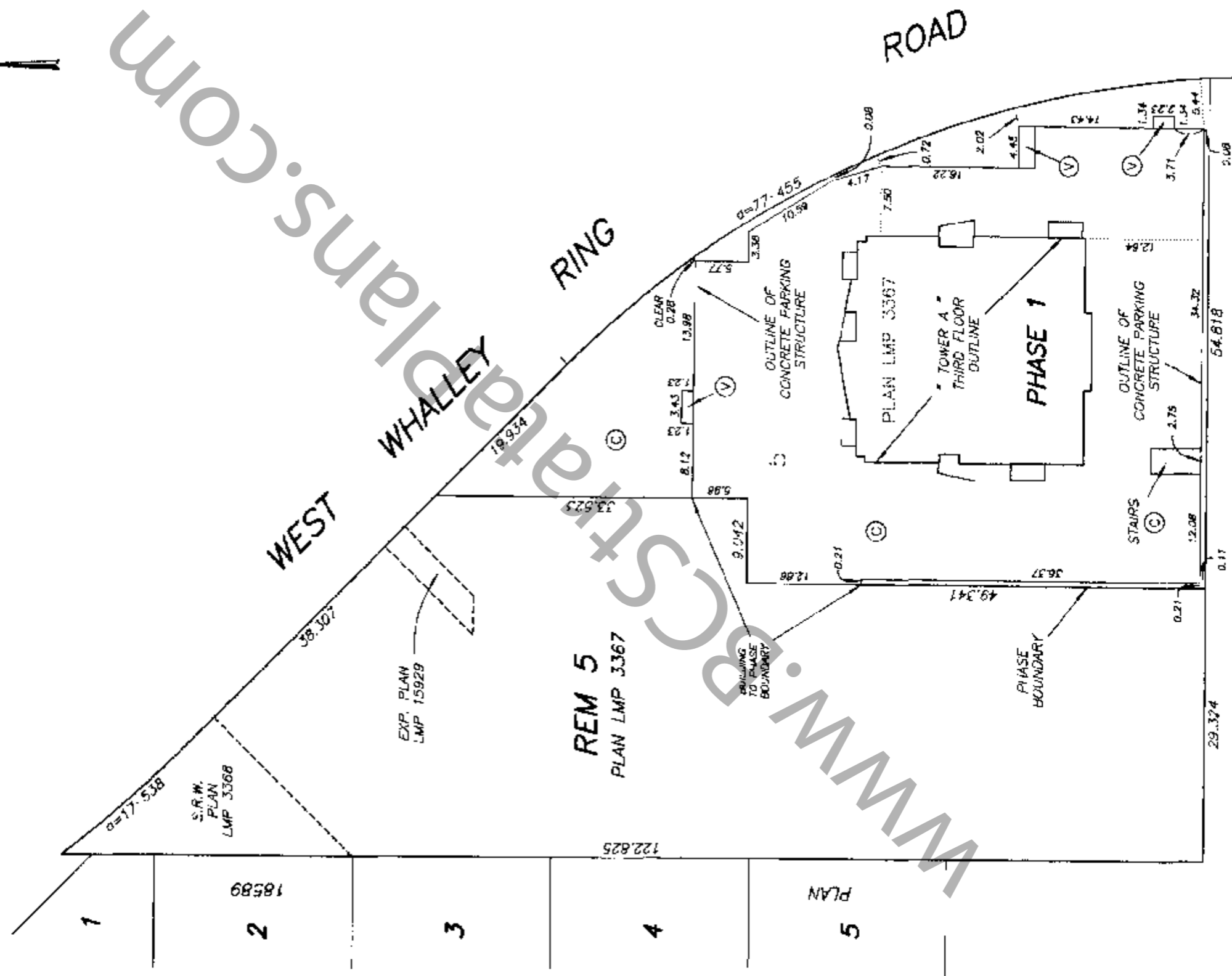
**BUILDING DIMENSIONS
AND LOCATION**

**STRATA PLAN LMS 2093
PHASE 1**

SCALE 1:500



ALL DISTANCES ARE IN METRES.



STRATA PLAN
LMS 1383

DATE : JULY 31, 1995.

M.E.S.

STRATA PLAN LMS 2093

PHASE 1

CONDOMINIUM ACT

LOT NUMBER	SHEET NUMBER	FORM 1		FORM 2		FORM 3	
		SCHEDULE OF UNIT ENTITLEMENT	UNIT ENTITLEMENT	SCHEDULE OF INTEREST UPON DESTRUCTION	INTEREST UPON DESTRUCTION	SCHEDULE OF VOTING RIGHTS	NUMBER OF VOTES
1	9, 12, 13		901		4572		
2	9, 14		828		4617		
3	8, 14		633		3162		
4	7, 14		1155		6132		
5	7, 15		1147		6102		
6	8, 15		533		2637		
7	9, 15		831		4877		
8	9, 15		873		3582		
9	9, 15		840		4662		
10	8, 15		700		3732		
11	7, 15		1150		6177		
12	7, 16		1147		6147		
13	8, 16		535		2682		
14	9, 16		865		4782		
15	9, 16		673		3627		
16	9, 16		876		4752		
17	8, 16		699		3777		
18	7, 16		1150		6222		
19	7, 17		1147		6192		
20	8, 17		535		2727		
21	9, 17		865		4827		
22	9, 17		675		3672		
23	9, 17		877		4797		
24	8, 17		698		3822		
25	7, 17		1150		6207		
26	7, 18		1147		6237		
27	8, 18		535		2772		
28	9, 18		871		4872		
29	9, 18		671		3717		
30	9, 18		877		4842		
31	8, 18		698		3867		
32	7, 18		1150		6312		
33	7, 19		1147		6282		
34	8, 19		535		2817		
35	9, 19		866		4917		
36	9, 19		675		3762		
37	9, 19		878		4887		
38	8, 19		698		3912		
39	7, 19		1150		6357		
40	7, 20		1147		6327		
41	8, 20		535		2862		
42	9, 20		866		4962		
43	9, 20		675		3807		
44	9, 20		877		4932		
45	8, 20		698		3957		
46	7, 20		1150		6402		
47	7, 21		1147		6372		
48	8, 21		535		2907		
49	9, 21		866		5007		
50	9, 21		675		3852		

STRATA PLAN LMS 2093

PHASE 1

CONDOMINIUM ACT

LOT NUMBER	SHEET NUMBER	FORM 1		FORM 2		FORM 3	
		SCHEDULE OF UNIT ENTITLEMENT	UNIT ENTITLEMENT	SCHEDULE OF INTEREST UPON DESTRUCTION	INTEREST UPON DESTRUCTION	SCHEDULE OF VOTING RIGHTS	NUMBER OF VOTES
51	9, 21		877		4977		
52	8, 21		698		4002		
53	7, 21		1150		6447		
54	7, 22		1147		6417		
55	8, 22		535		2952		
56	9, 22		866		5052		
57	9, 22		674		3897		
58	9, 22		878		5022		
59	8, 22		698		4047		
60	7, 22		1150		6492		
61	7, 23		1149		6462		
62	8, 23		534		2997		
63	9, 23		866		5097		
64	9, 23		673		3942		
65	9, 23		875		5067		
66	8, 23		699		4082		
67	7, 23		1150		6537		
68	7, 24		1147		6507		
69	8, 24		534		3042		
70	9, 24		1090		6027		
71	9, 24		942		5232		
72	8, 24		896		4932		
73	7, 24		1149		6562		
74	7, 25		1147		6552		
75	8, 25		534		3087		
76	9, 25		1090		6072		
77	9, 25		942		5277		
78	8, 25		896		4977		
79	7, 25		1149		6627		
80	7, 26		1147		6597		
81	8, 26		534		3132		
82	9, 26		1090		6117		
83	9, 26		942		5322		
84	8, 26		896		5022		
85	7, 26		1149		6672		
86	7, 27		1147		6642		
87	8, 27		534		3177		
88	9, 27		1090		6162		
89	9, 27		941		5367		
90	8, 27		897		5067		
91	7, 27		1149		6717		
92	7, 28		1147		6687		
93	8, 28		535		3222		
94	9, 28		1090		6207		
95	9, 28		942		5412		
96	8, 28		896		5112		
97	7, 28		1149		6762		
98	7, 29		1147		6732		
99	8, 29		535		3267		
100	9, 29		1090		6252		

STRATA PLAN LMS 2093

PHASE 1

STATUTORY DECLARATION

I, THE UNDERSIGNED DO SOLEMNLY DECLARE THAT:


- 1) I, THE UNDERSIGNED AM THE DULY AUTHORIZED AGENT OF THE OWNER / DEVELOPER.
- 2) THE STRATA PLAN IS FOR RESIDENTIAL USE ONLY.

I MAKE THIS SOLEMN DECLARATION CONSCIENTIOUSLY BELIEVING IT TO BE TRUE AND KNOWING IT IS OF THE SAME FORCE AND EFFECT AS IF MADE UNDER OATH.



 Joe S. Koussian

DECLARED BEFORE ME AT Vancouver
 IN THE PROVINCE OF BRITISH COLUMBIA
 THIS 3rd DAY OF August, 1995.



 Elizabeth H. Yip, Lawyer
 1300-777 Dunsmuir St.
 Vancouver BC V7Y 1K2

OWNERS:
 INTRAWEST CORPORATION
 (INCORPORATION No. 200486)

AUTHORIZED SIGNATORY Joe S. Koussian

AUTHORIZED SIGNATORY



 WITNESS AS TO BOTH SIGNATURES Elizabeth Yip
Joe S. Koussian's signature


Lawyer


 OCCUPATION OF WITNESS

1300-777 Dunsmuir St, Vancouver

 ADDRESS OF WITNESS

MORTGAGEE:
 LAURENTIAN BANK OF CANADA
 B-174'S HUNTERVIEW SIGNATORY



 Geoff Brulman


 A. Sydan

 Witness

WITNESS AS TO BOTH SIGNATURES J. REBILLARD

Home Administrator

 OCCUPATION OF WITNESS

800 W 4th St, Vancouver

 ADDRESS OF WITNESS

UMLBCStrataPlans.Com

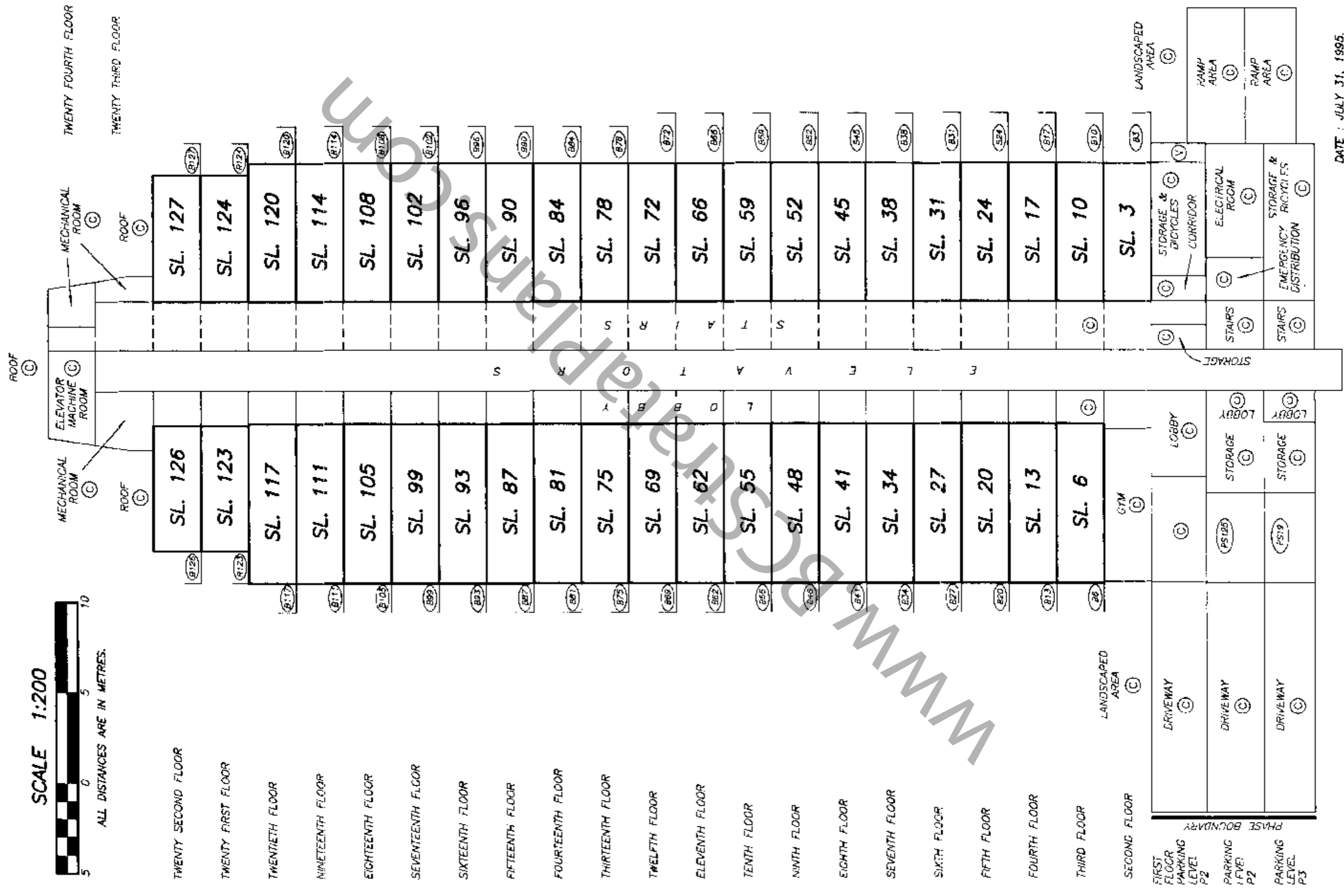
SECTION B - B' TOWER A

STRATA PLAN LMS 2093 PHASE 1

SCALE 1:200



ALL DISTANCES ARE IN METRES.



DATE : JULY 31, 1995.

M.E.S.

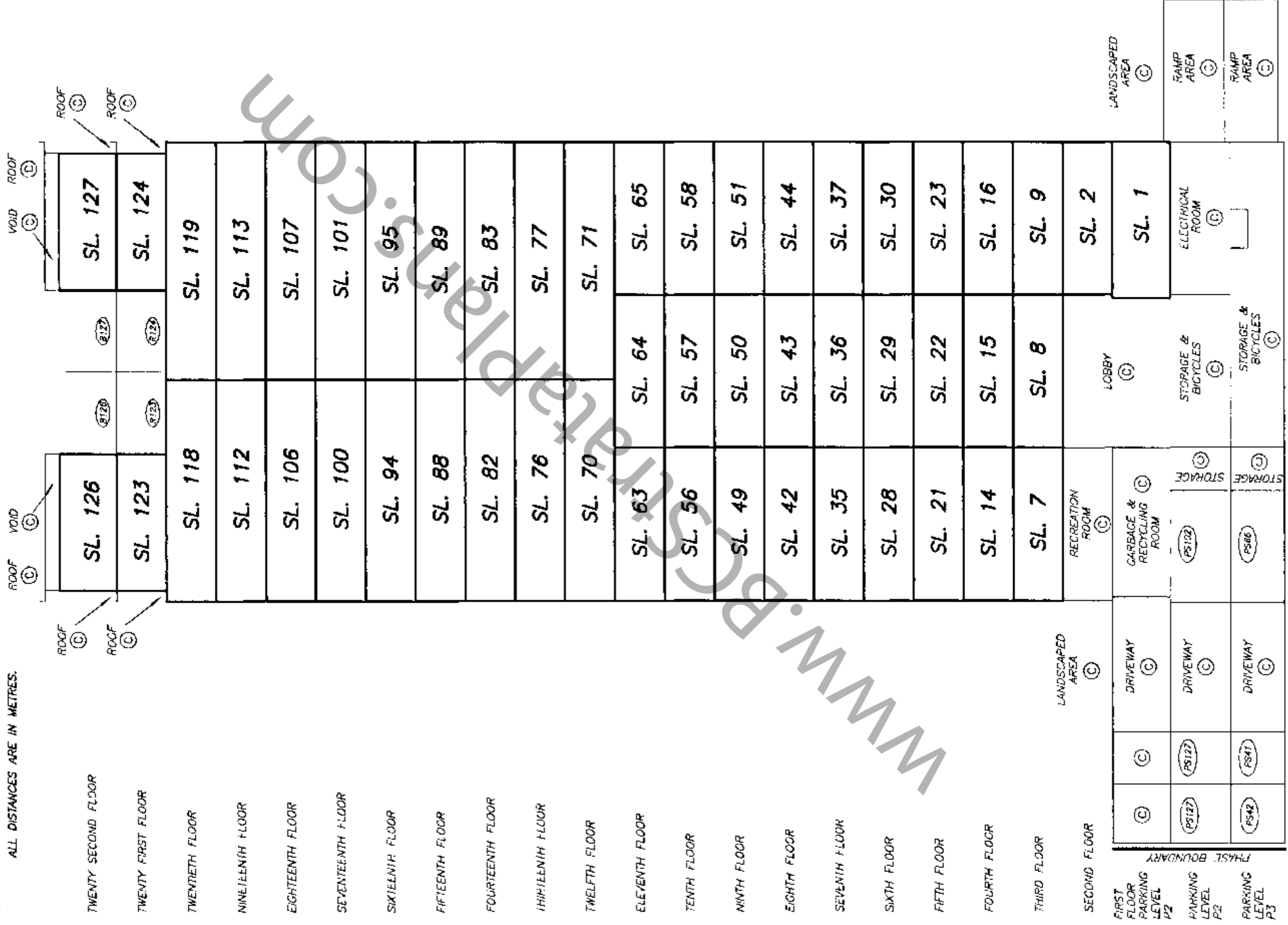
SECTION C - C'
TOWER A

STRATA PLAN LMS 2093
PHASE 1

SCALE 1:200



ALL DISTANCES ARE IN METRES.



DATE : JULY 31, 1995.

M.E.S.

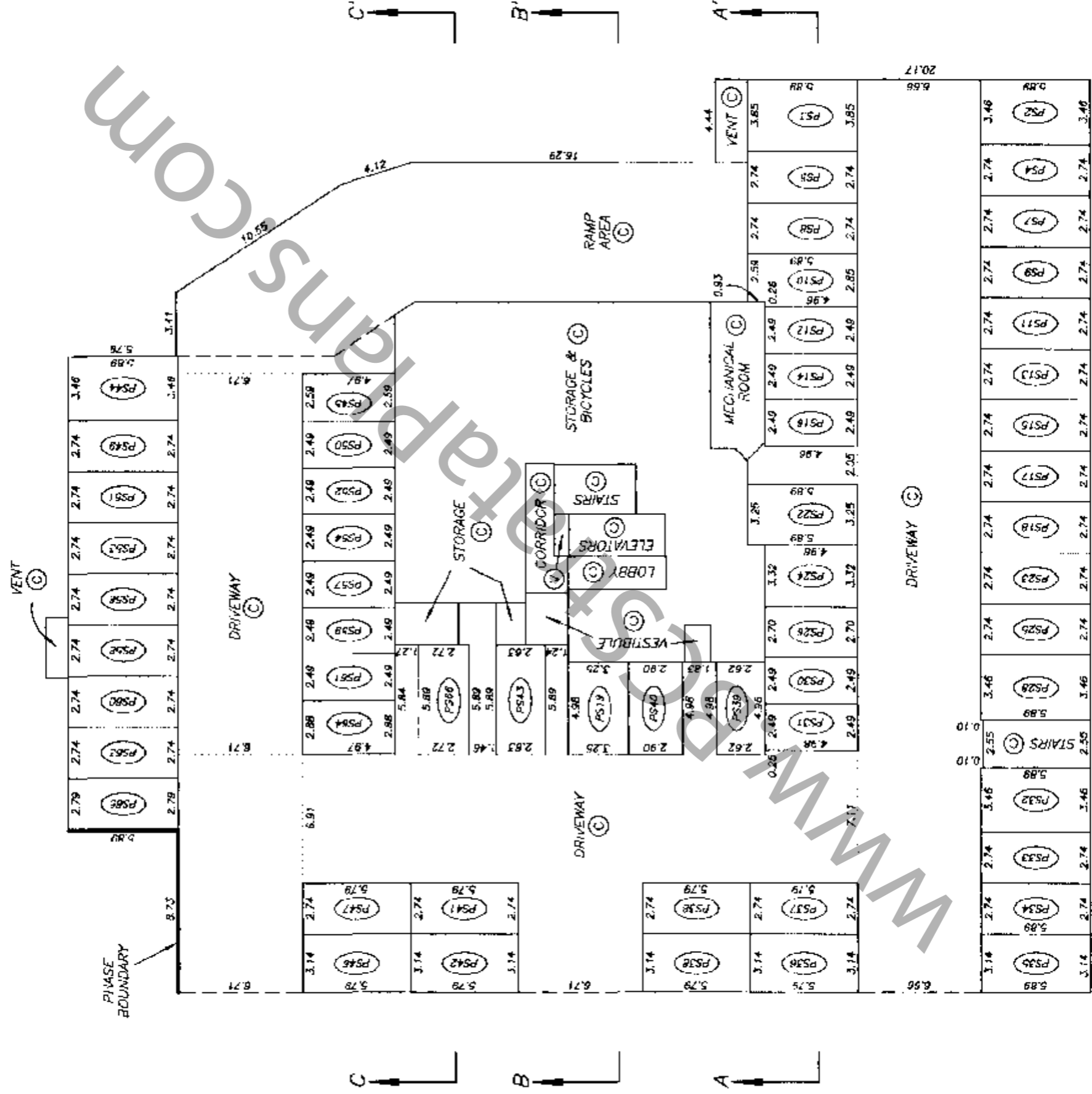
**PARKING LEVEL P3
TOWER A**

**STRATA PLAN LMS 2093
PHASE 1**

SCALE 1:250



ALL DISTANCES ARE IN METRES.



PARKING LEVEL P2 TOWER A

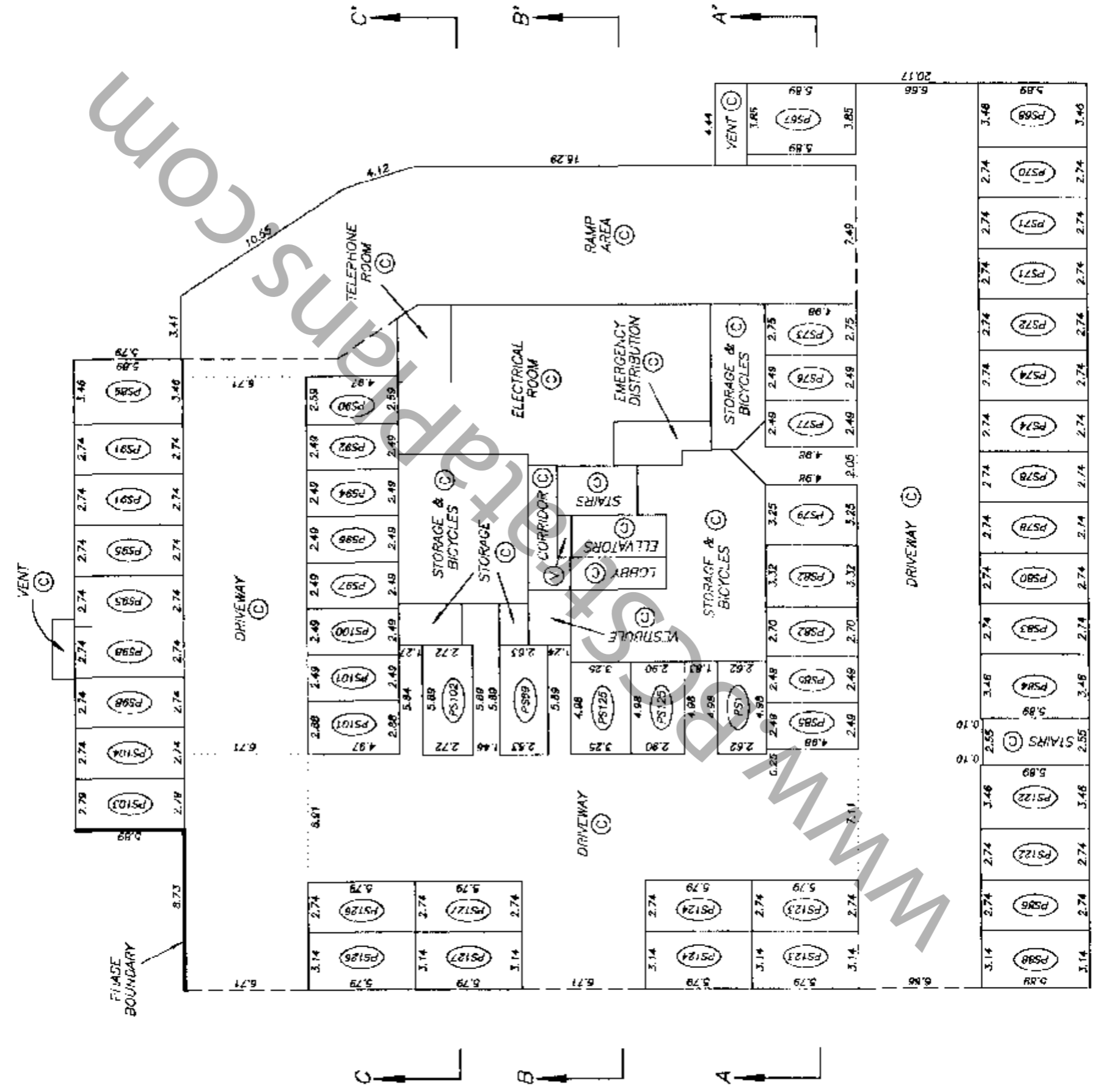
STRATA PLAN LMS 2093 PHASE 1



SCALE 1:250



ALL DISTANCES ARE IN METRES.



DATE : JULY 31, 1995.

M.E.S.

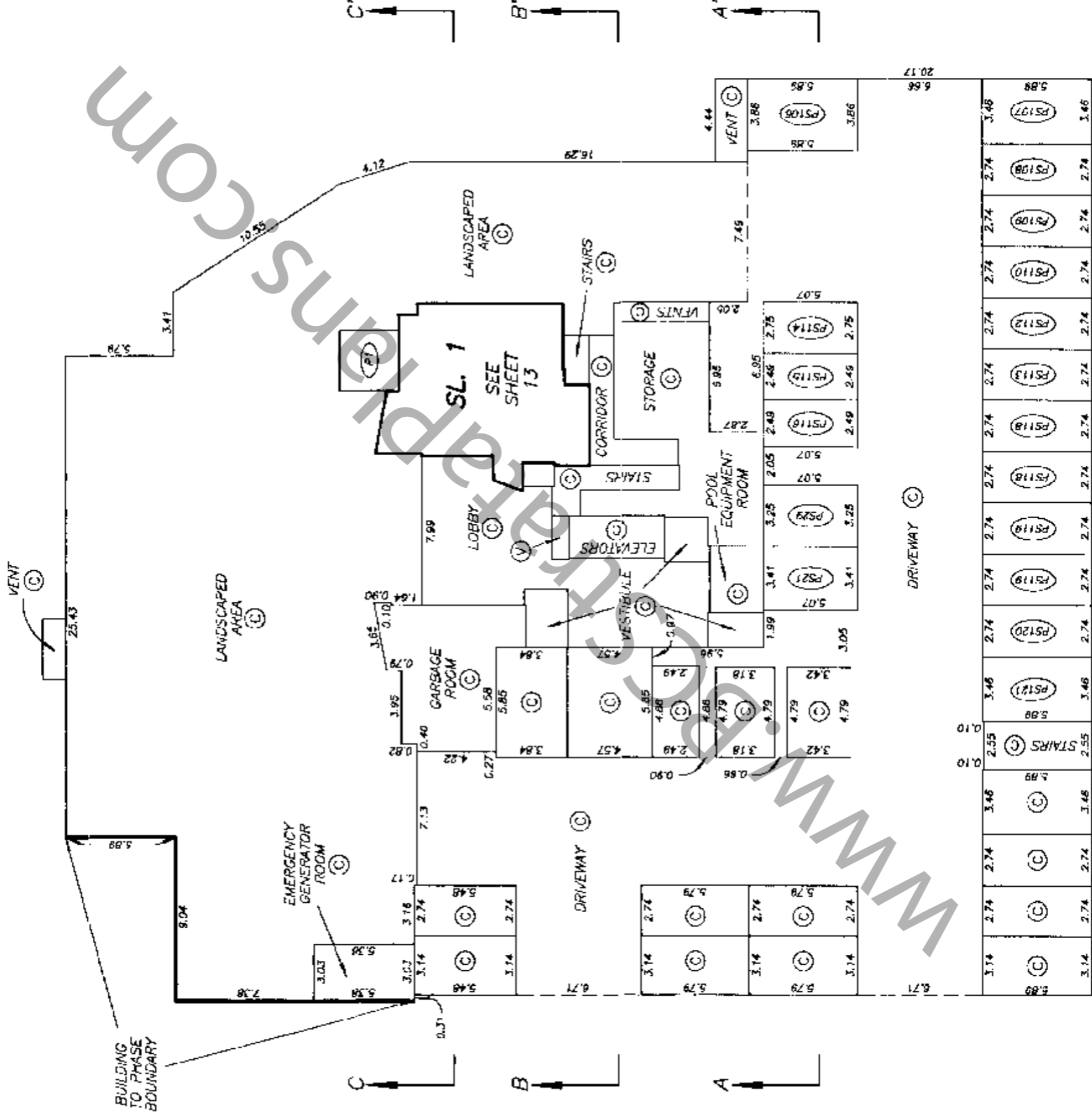
**PARKING LEVEL P1
TOWER A**

**STRATA PLAN LMS 2093
PHASE 1**

SCALE 1:250



ALL DISTANCES ARE IN METRES.



SHEET 12 OF 57 SHEETS

P. S. W.

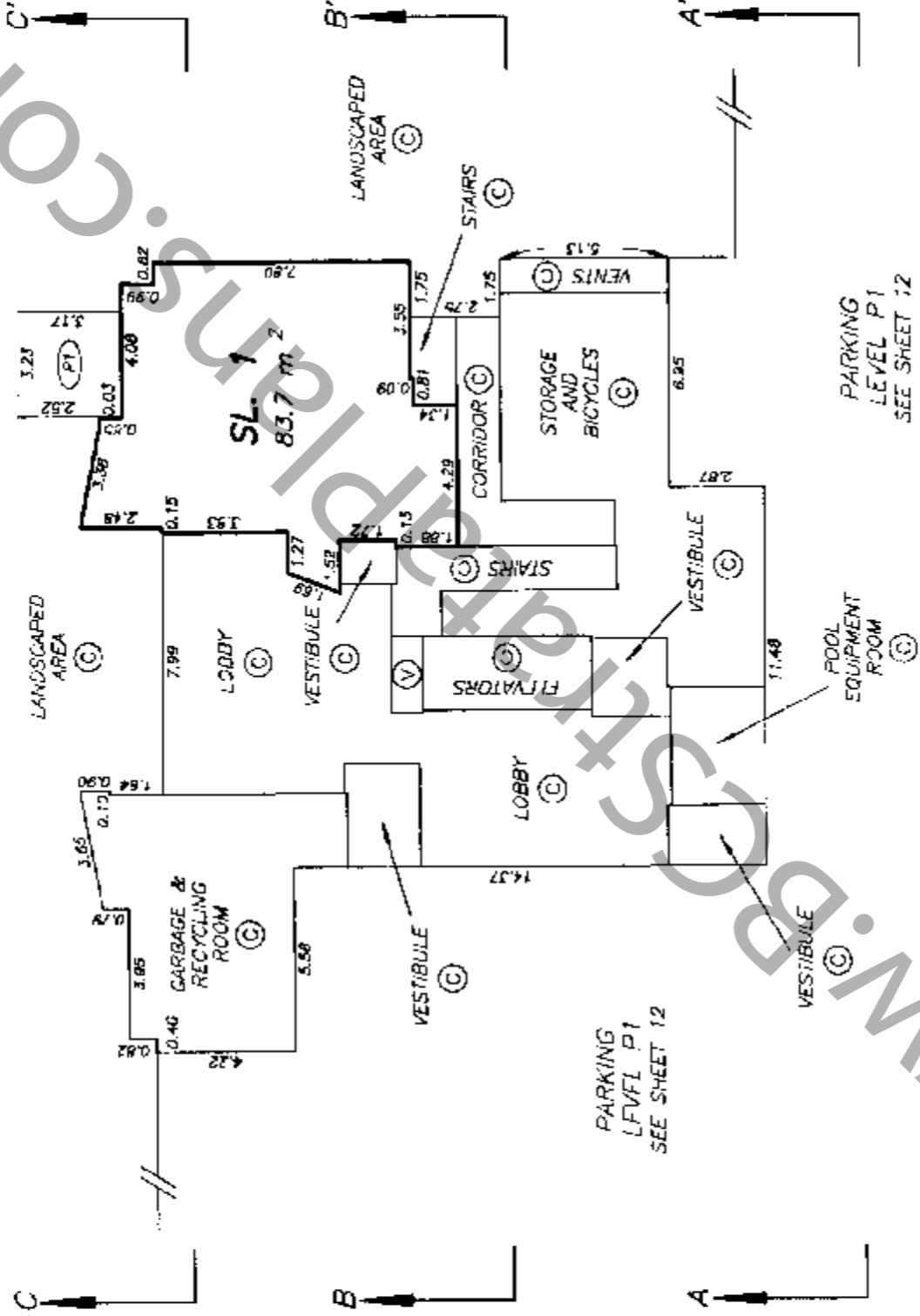
FIRST FLOOR DETAIL PLAN
PARKING LEVEL P1
TOWER A

STRATA PLAN LMS 2093
PHASE 1

SCALE 1:200



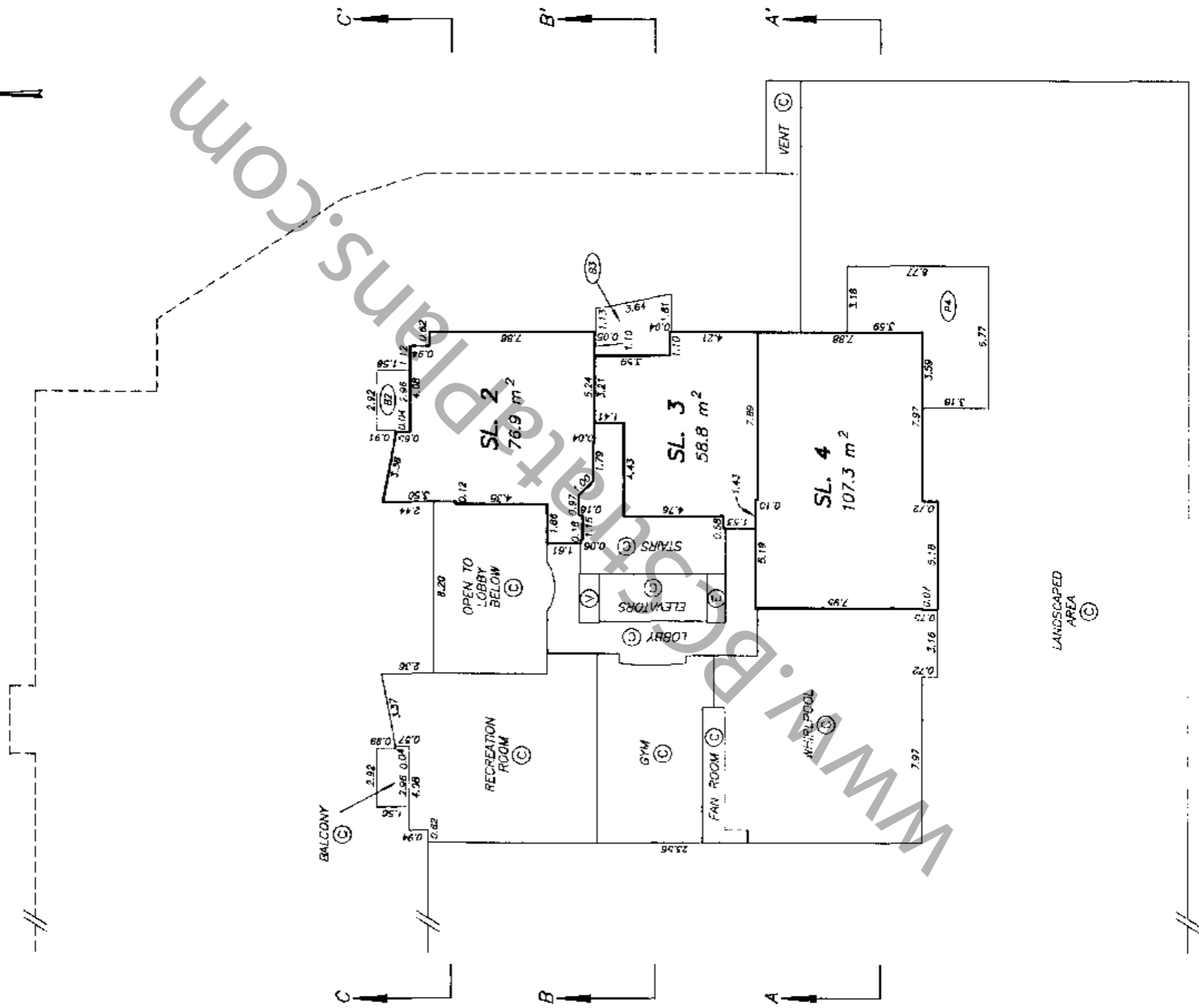
ALL DISTANCES ARE IN METRES.



M.E.S.

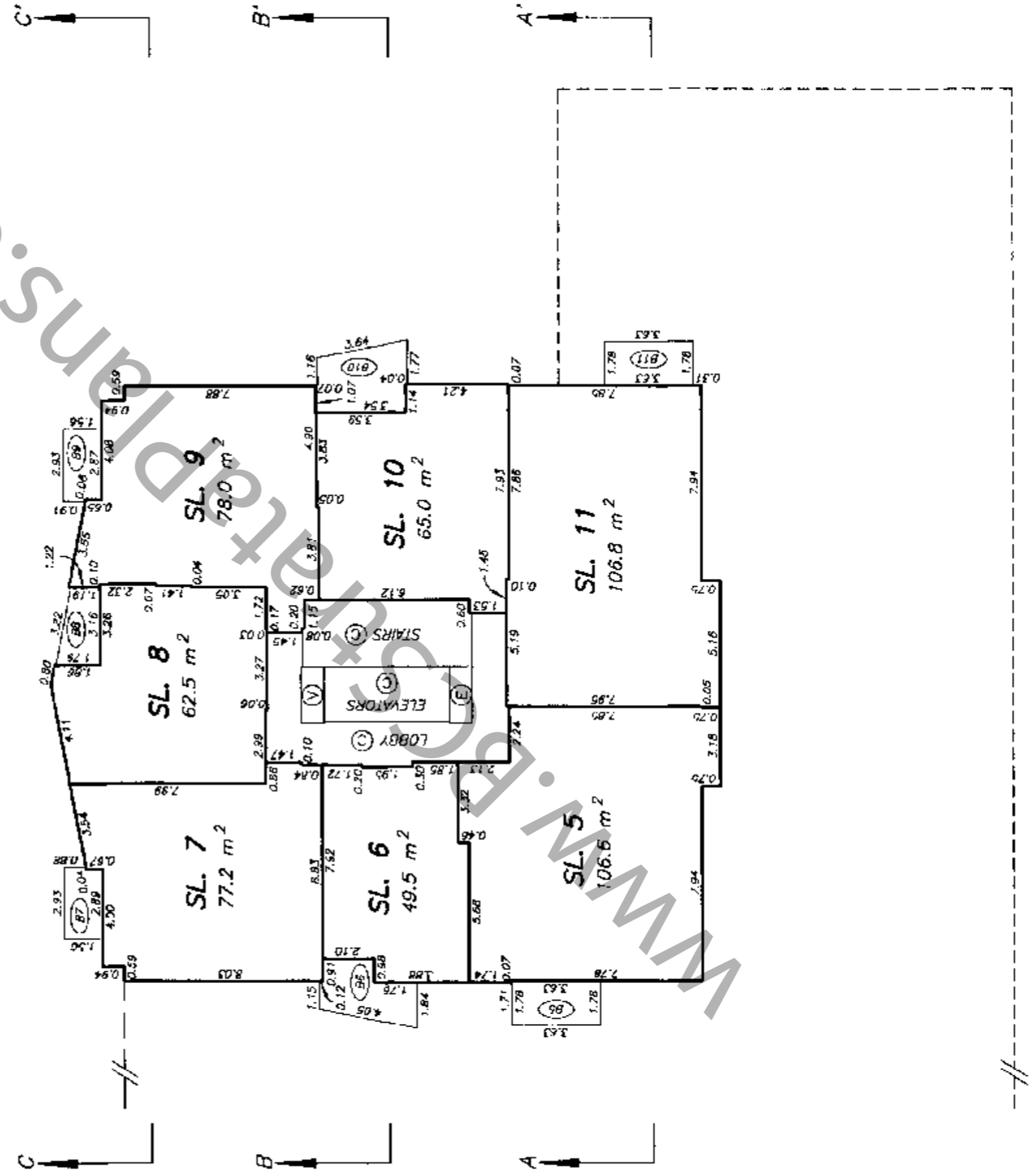
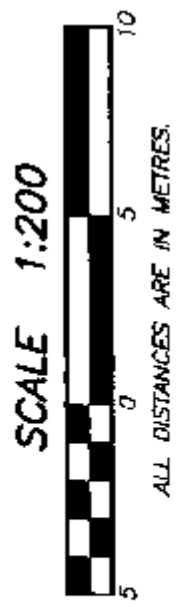
SECOND FLOOR PLAN
TOWER A

STRATA PLAN LMS 2093
PHASE 1



THIRD FLOOR PLAN
TOWER A

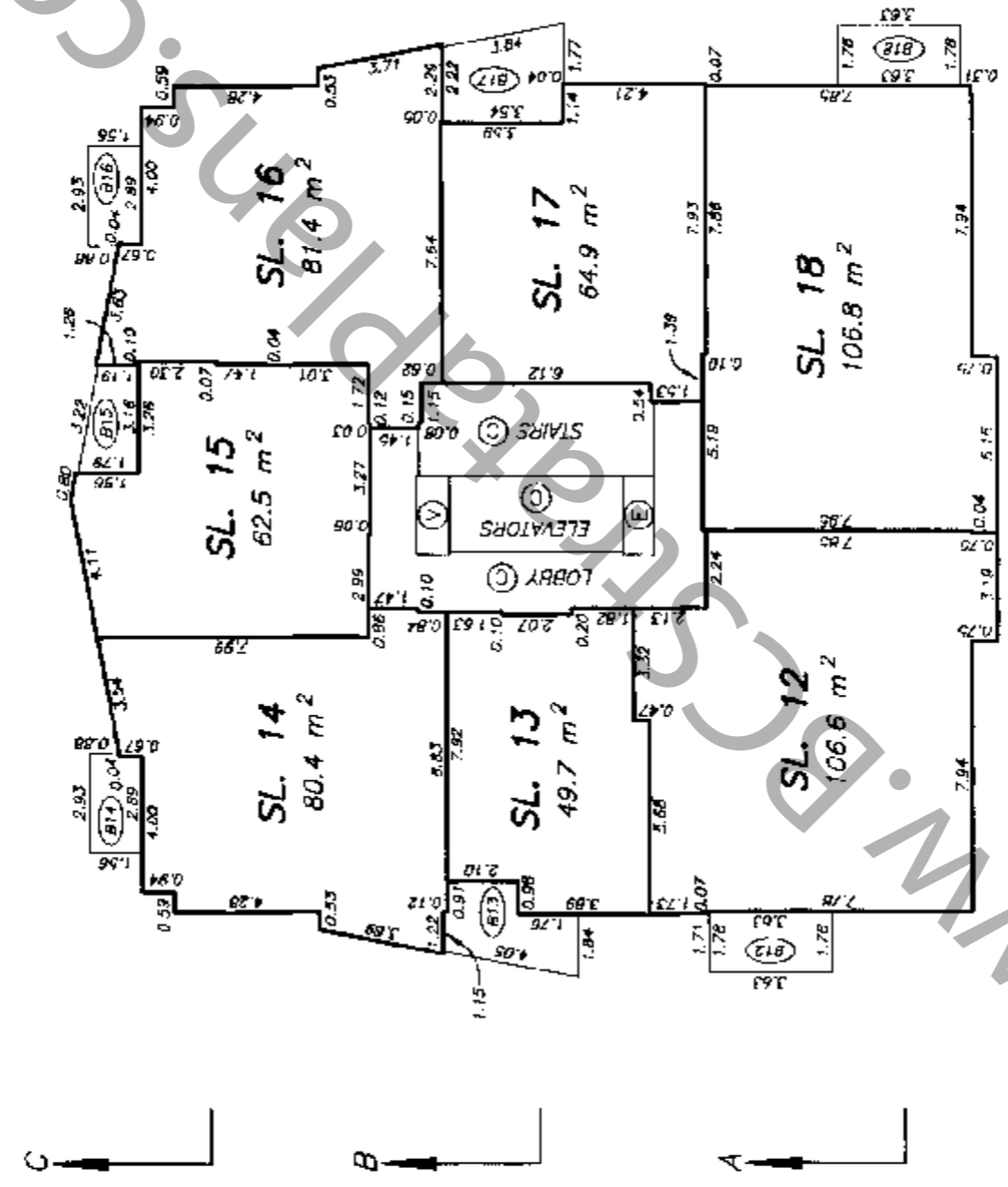
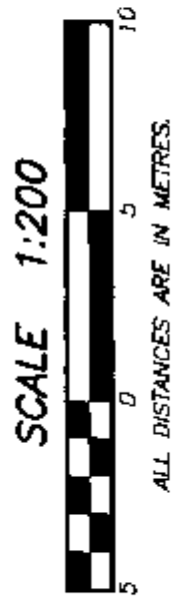
STRATA PLAN LMS 2093
PHASE 1



M.E. S.

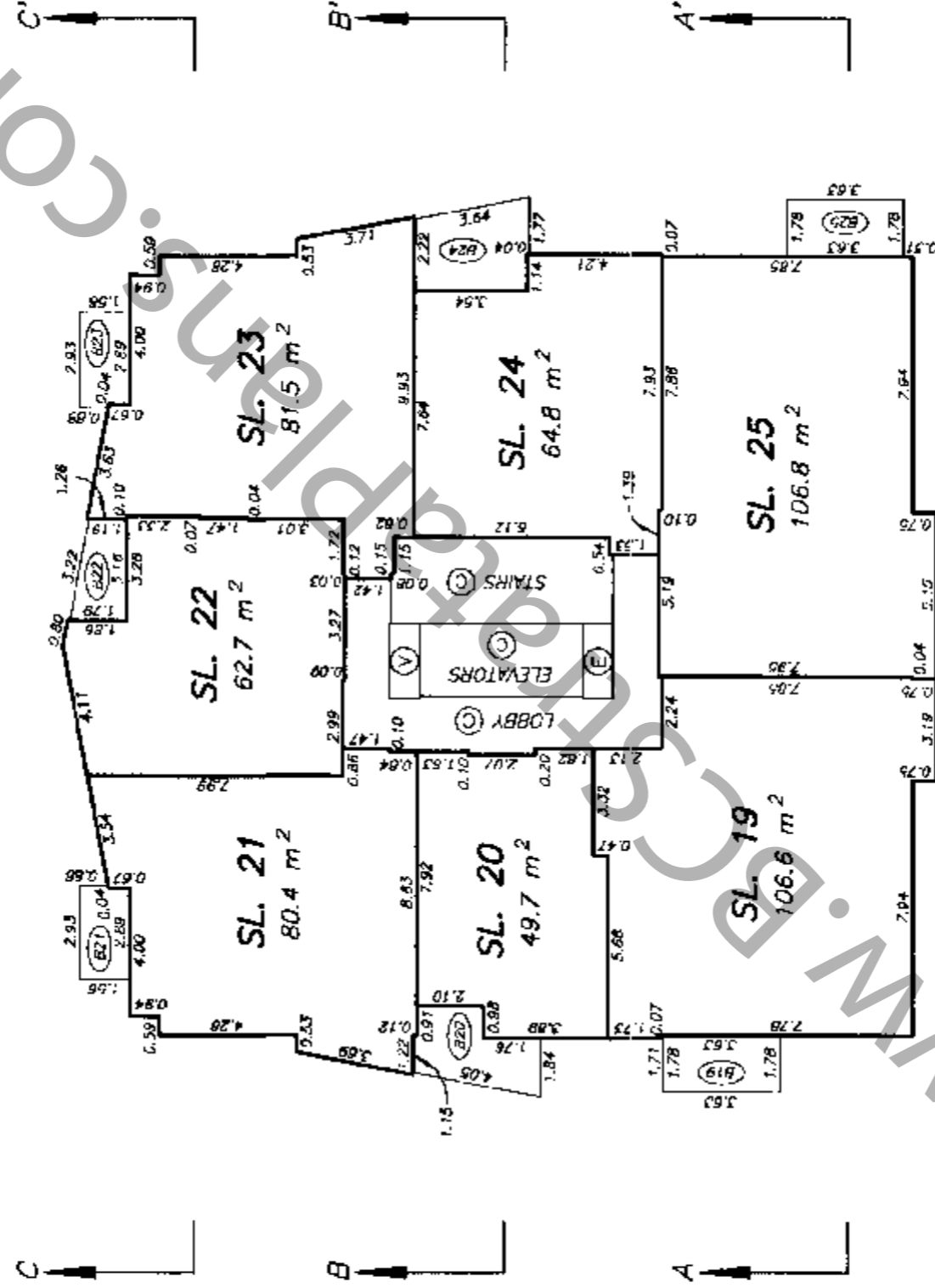
FOURTH FLOOR PLAN
TOWER A

STRATA PLAN LMS 2093
PHASE 1



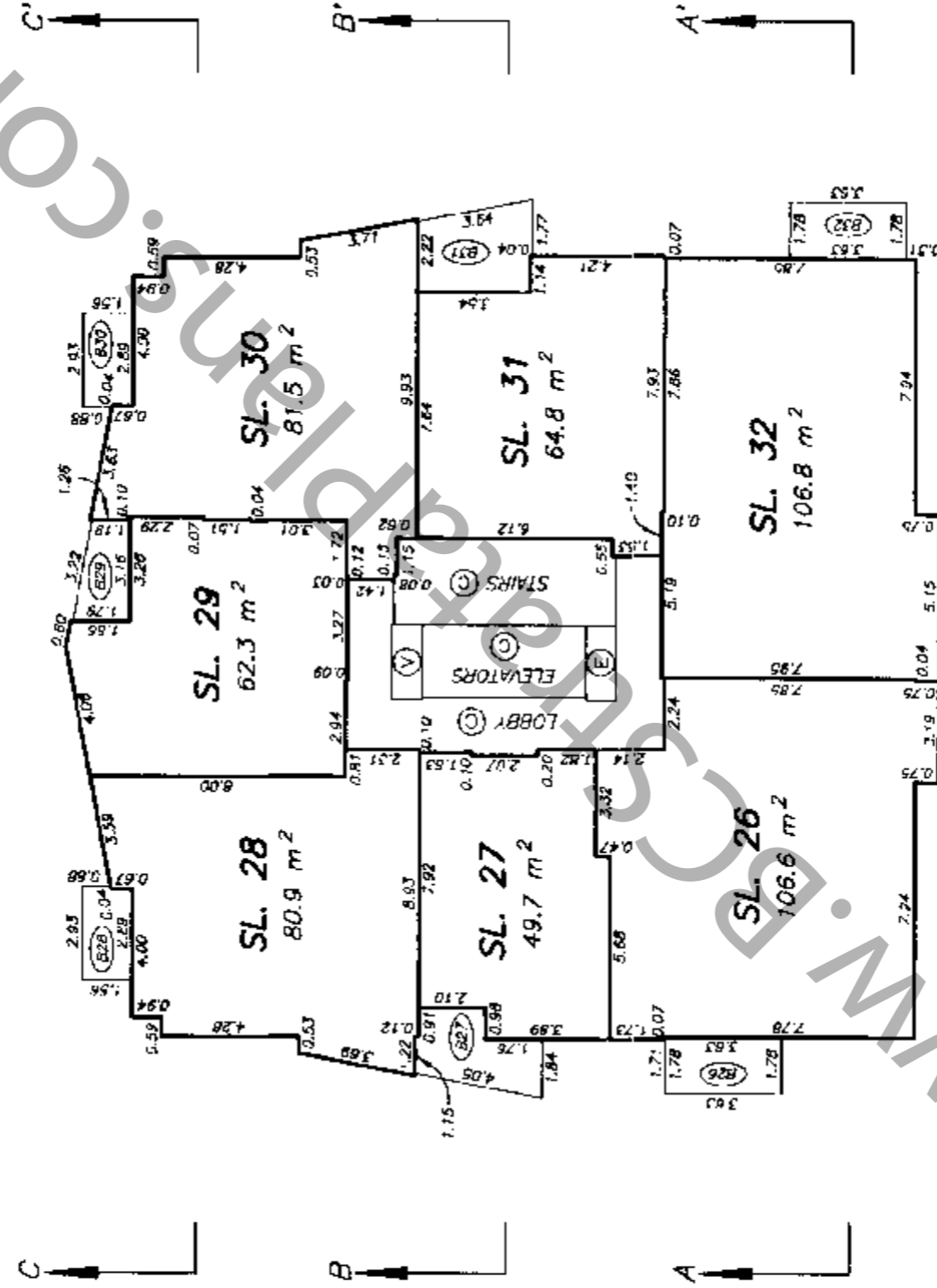
FIFTH FLOOR PLAN
TOWER A

STRATA PLAN LMS 2093
PHASE 1



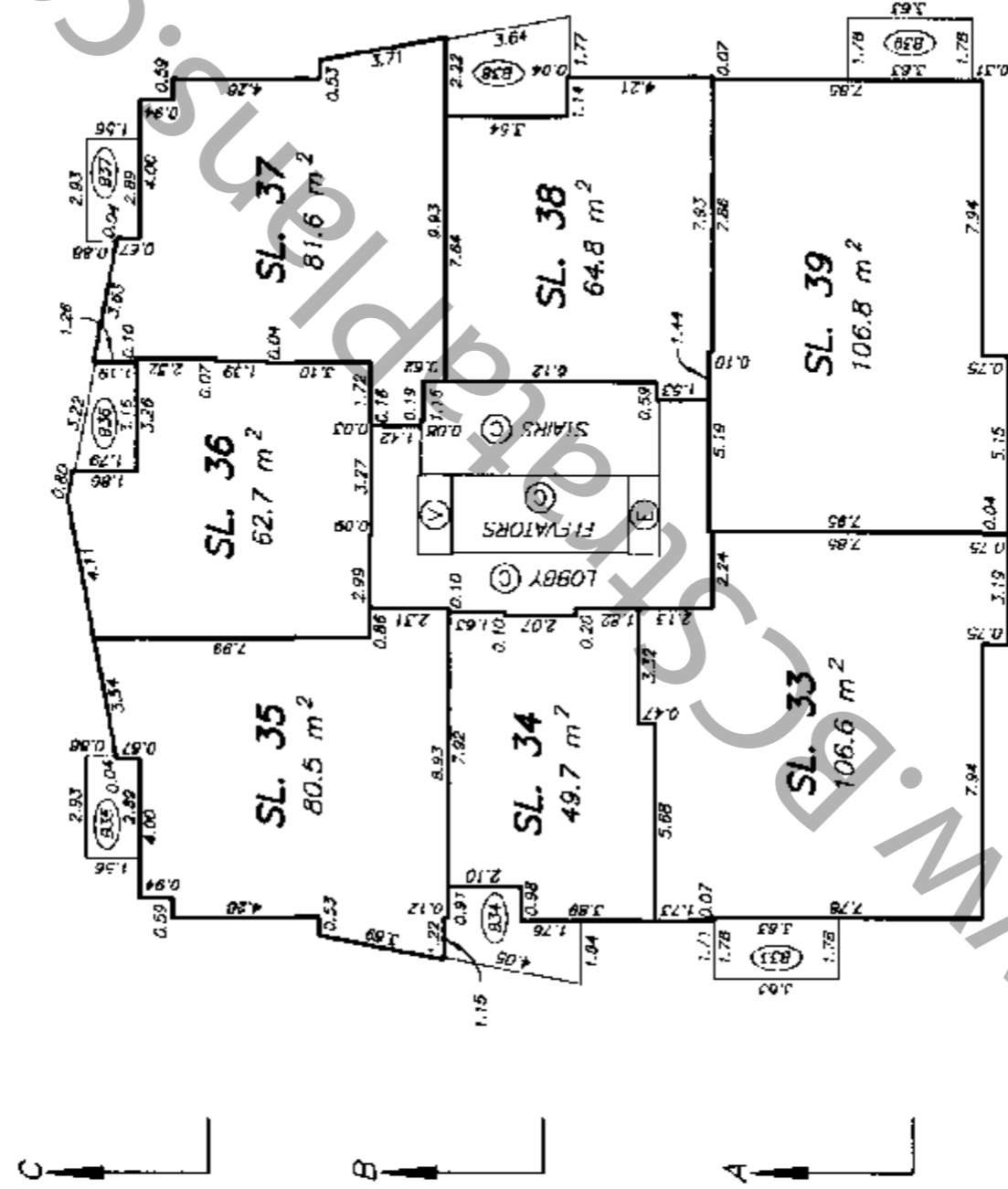
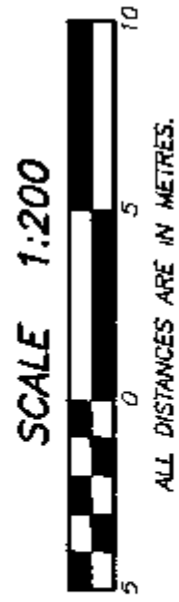
SIXTH FLOOR PLAN
TOWER A

STRATA PLAN LMS 2093
PHASE 1



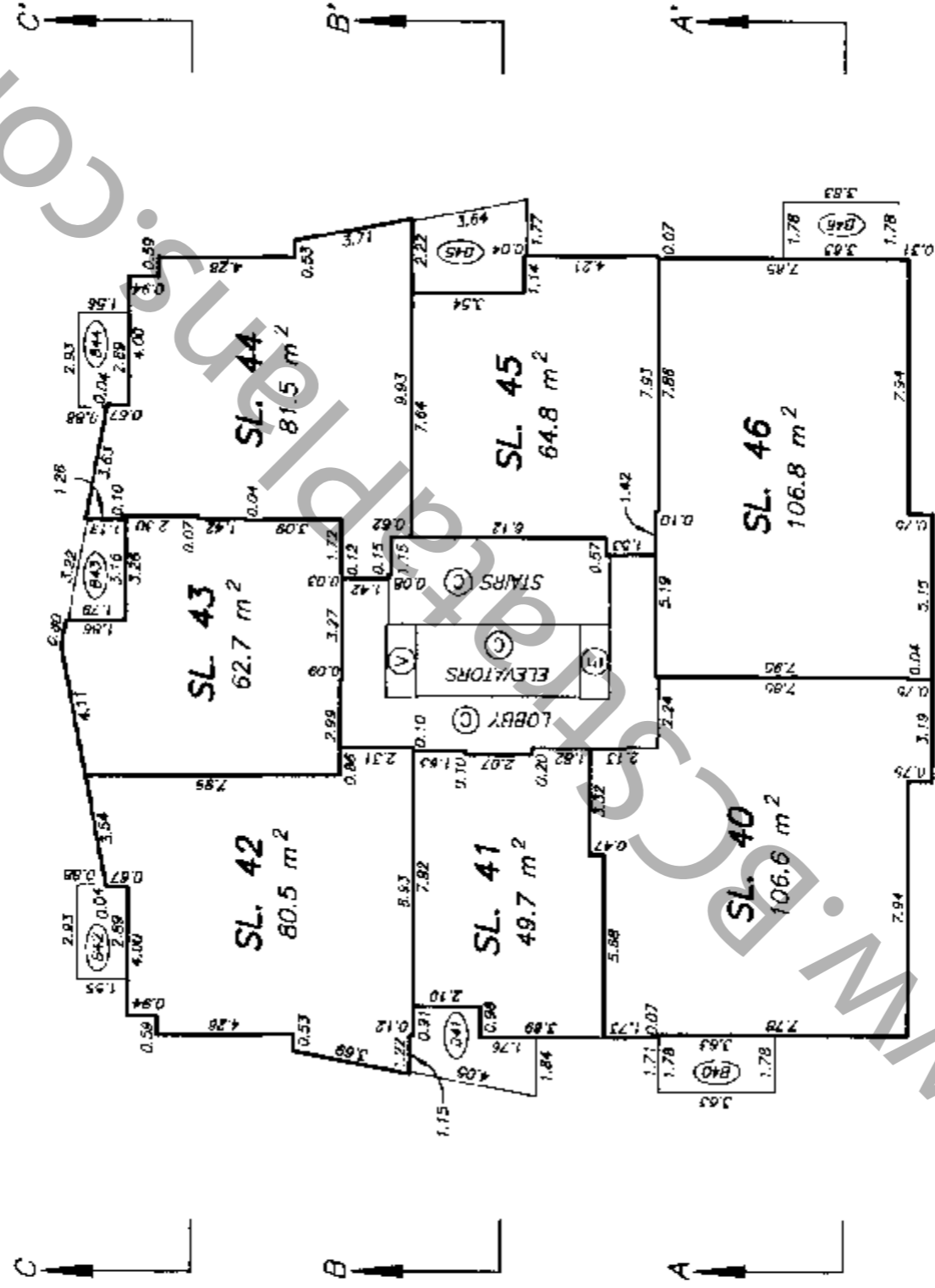
SEVENTH FLOOR PLAN
TOWER A

STRATA PLAN LMS 2093
PHASE 1



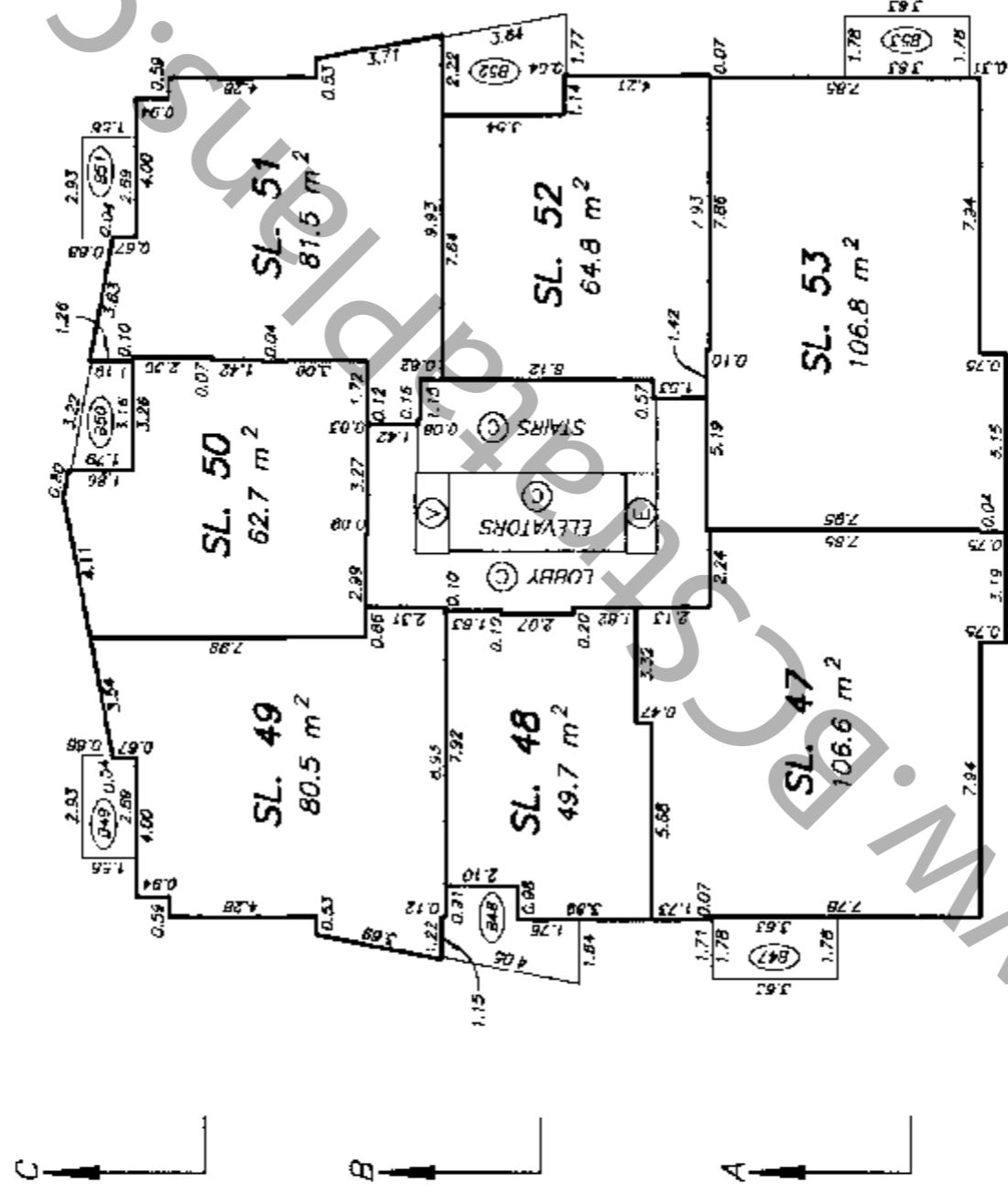
EIGHTH FLOOR PLAN
TOWER A

STRATA PLAN LMS 2093
PHASE 1



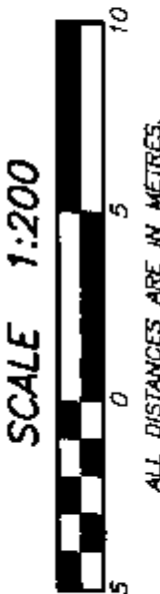
**NINTH FLOOR PLAN
TOWER A**

**STRATA PLAN LMS 2093
PHASE 1**

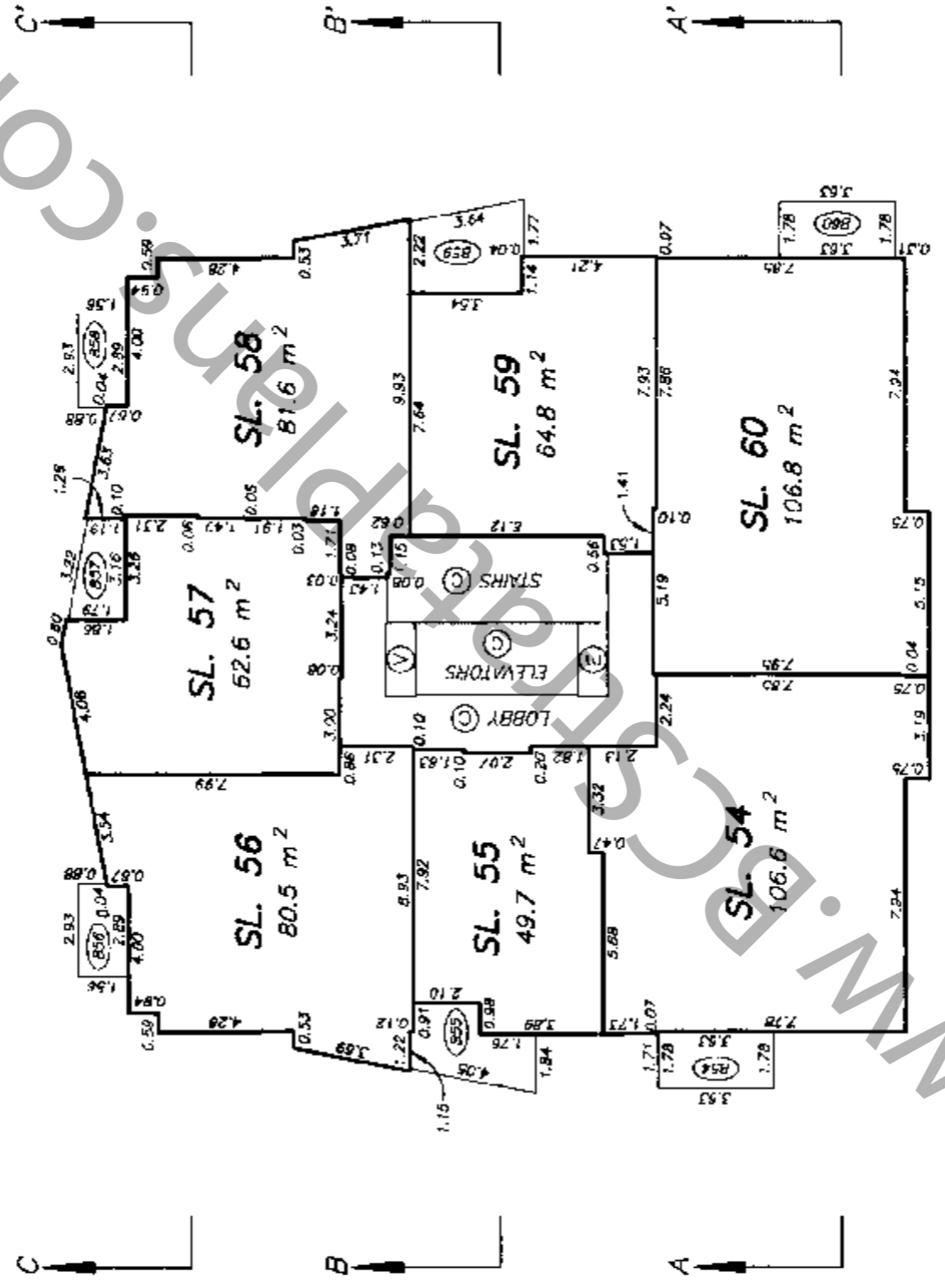


TENTH FLOOR PLAN
TOWER A

STRATA PLAN LMS 2093
PHASE 1

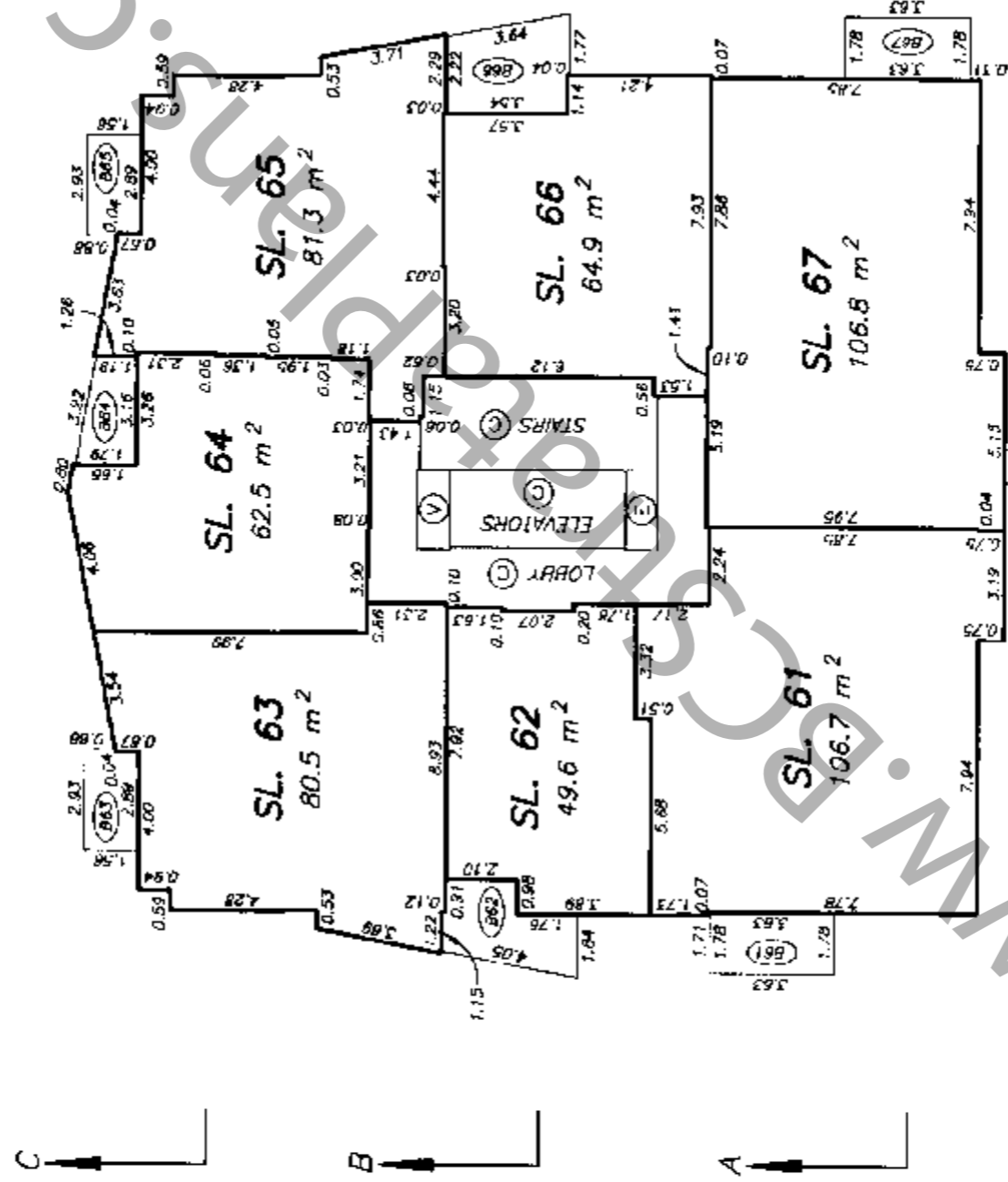


ALL DISTANCES ARE IN METRES.



**ELEVENTH FLOOR PLAN
TOWER A**

**STRATA PLAN LMS 2093
PHASE 1**



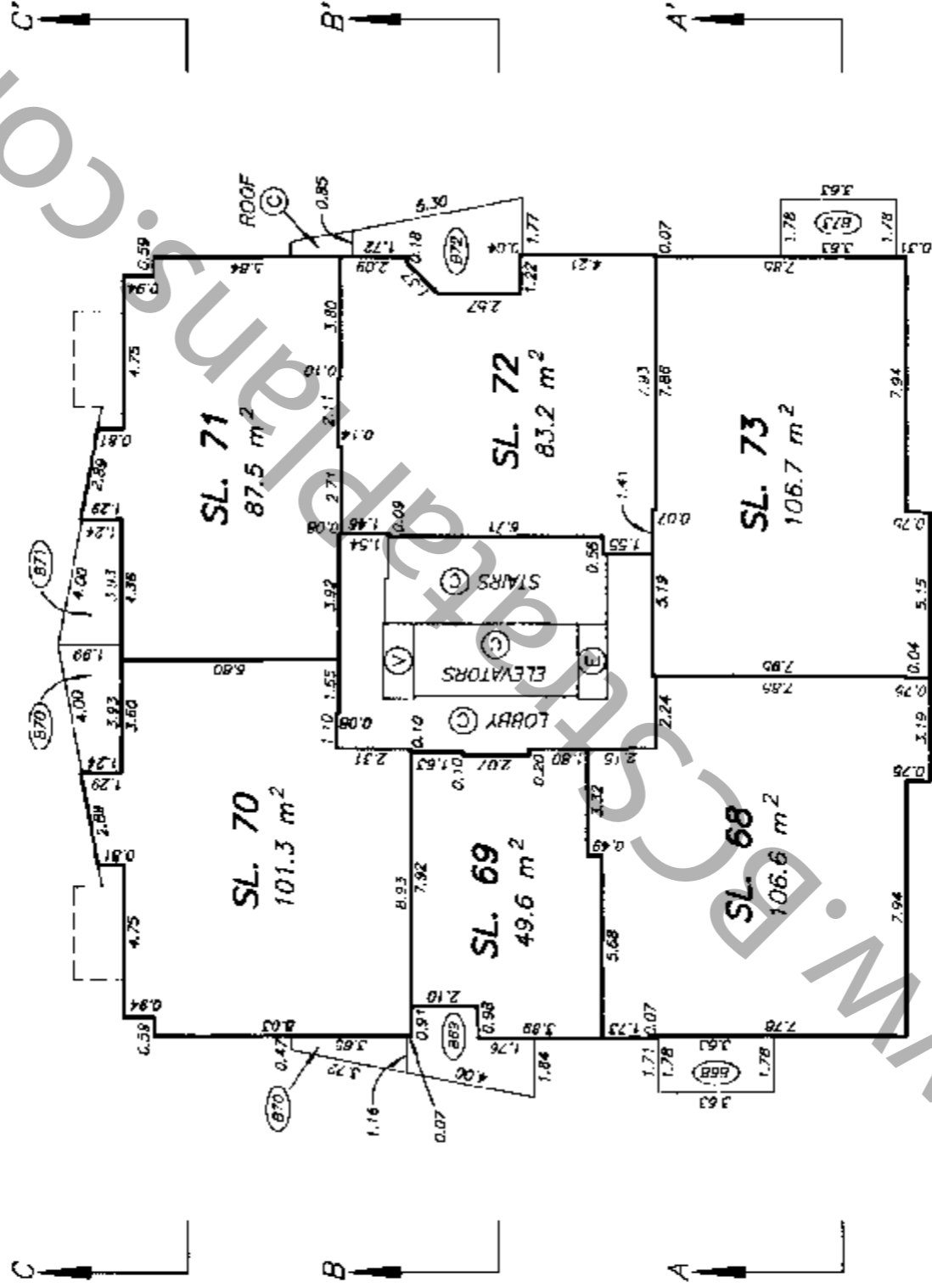
TWELFTH FLOOR PLAN
TOWER A

STRATA PLAN LMS 2093
PHASE 1



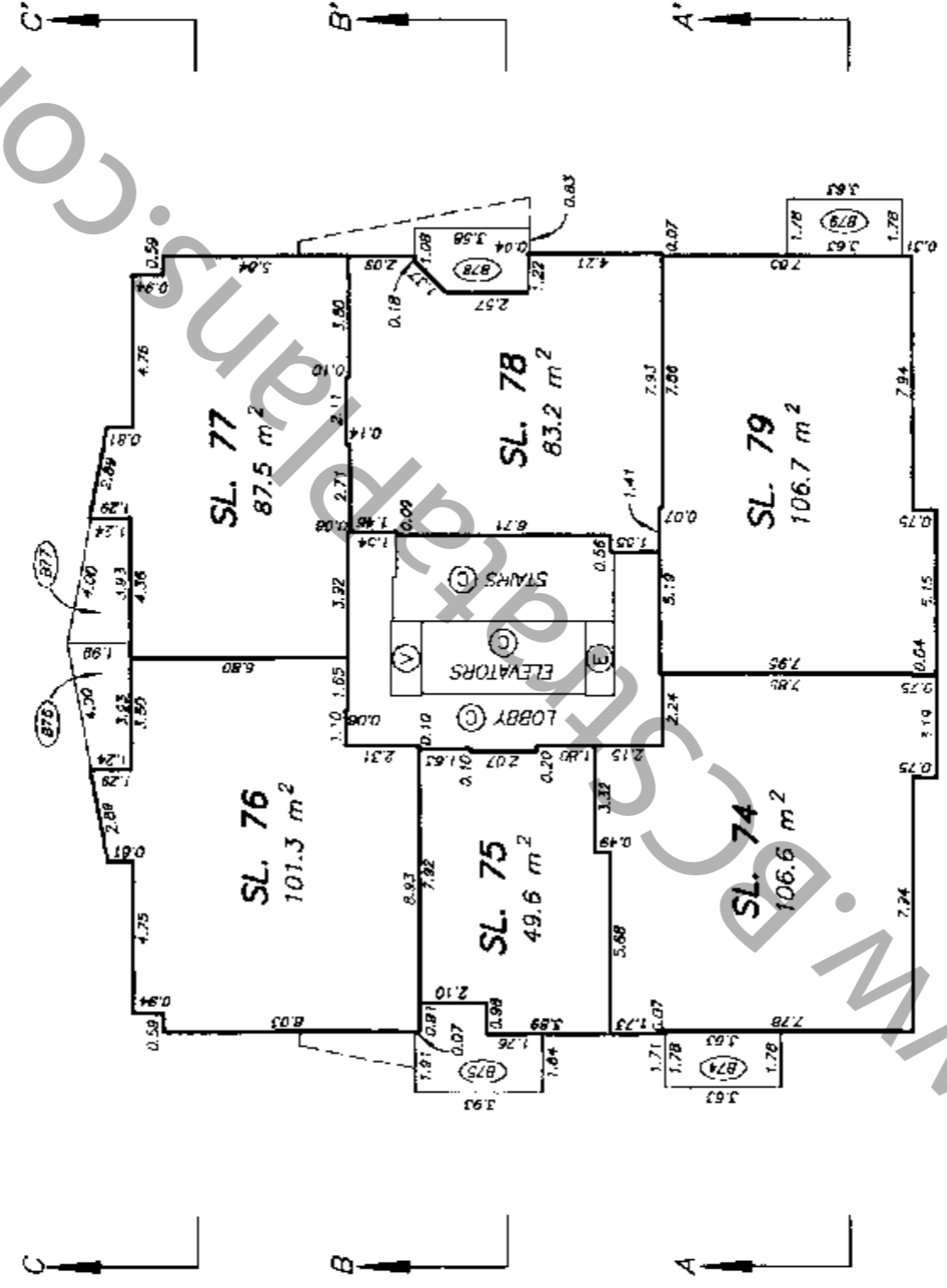
SCALE 1:200

ALL DISTANCES ARE IN METRES.



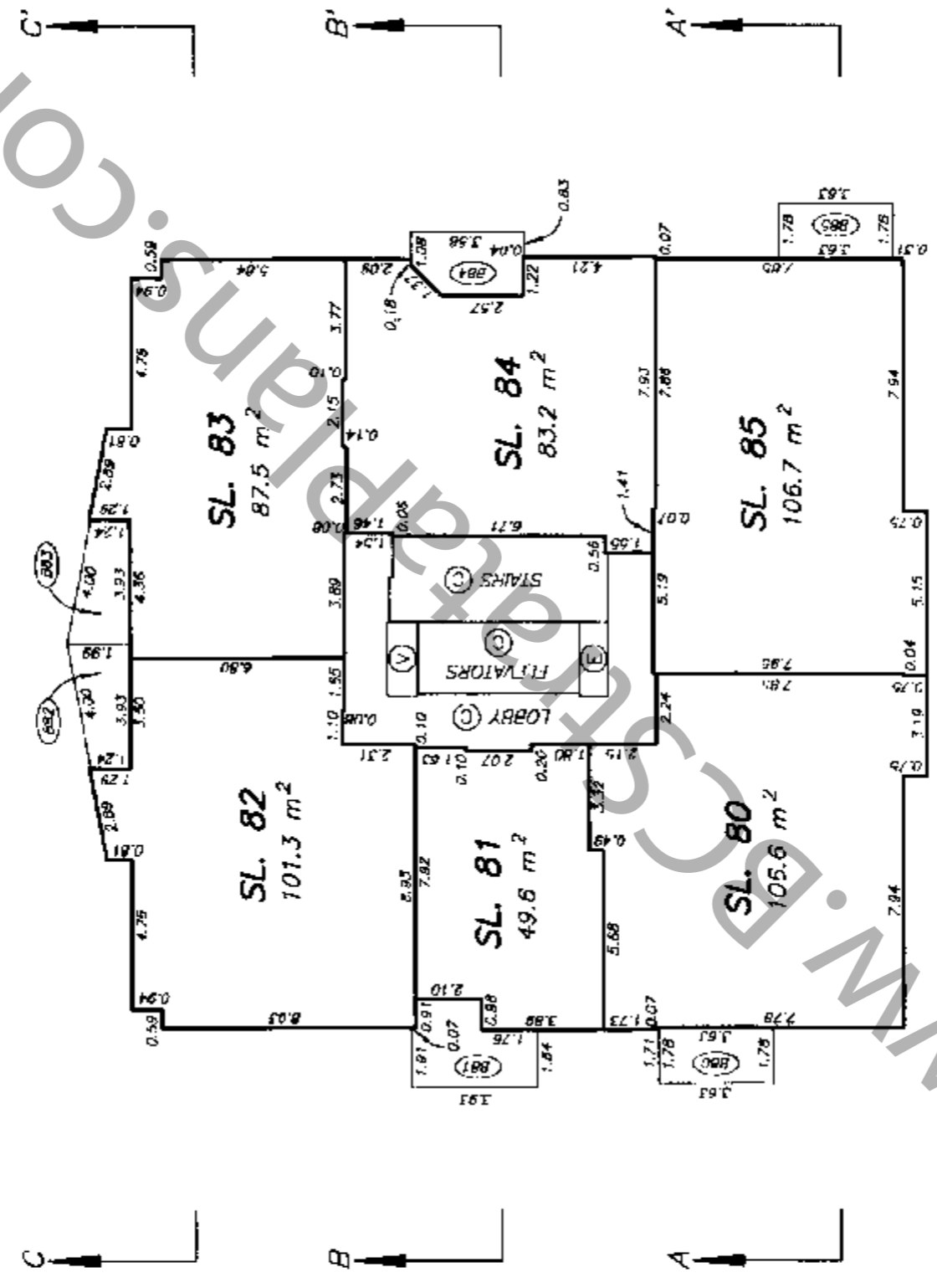
THIRTEENTH FLOOR PLAN
TOWER A

STRATA PLAN LMS 2093
PHASE 1



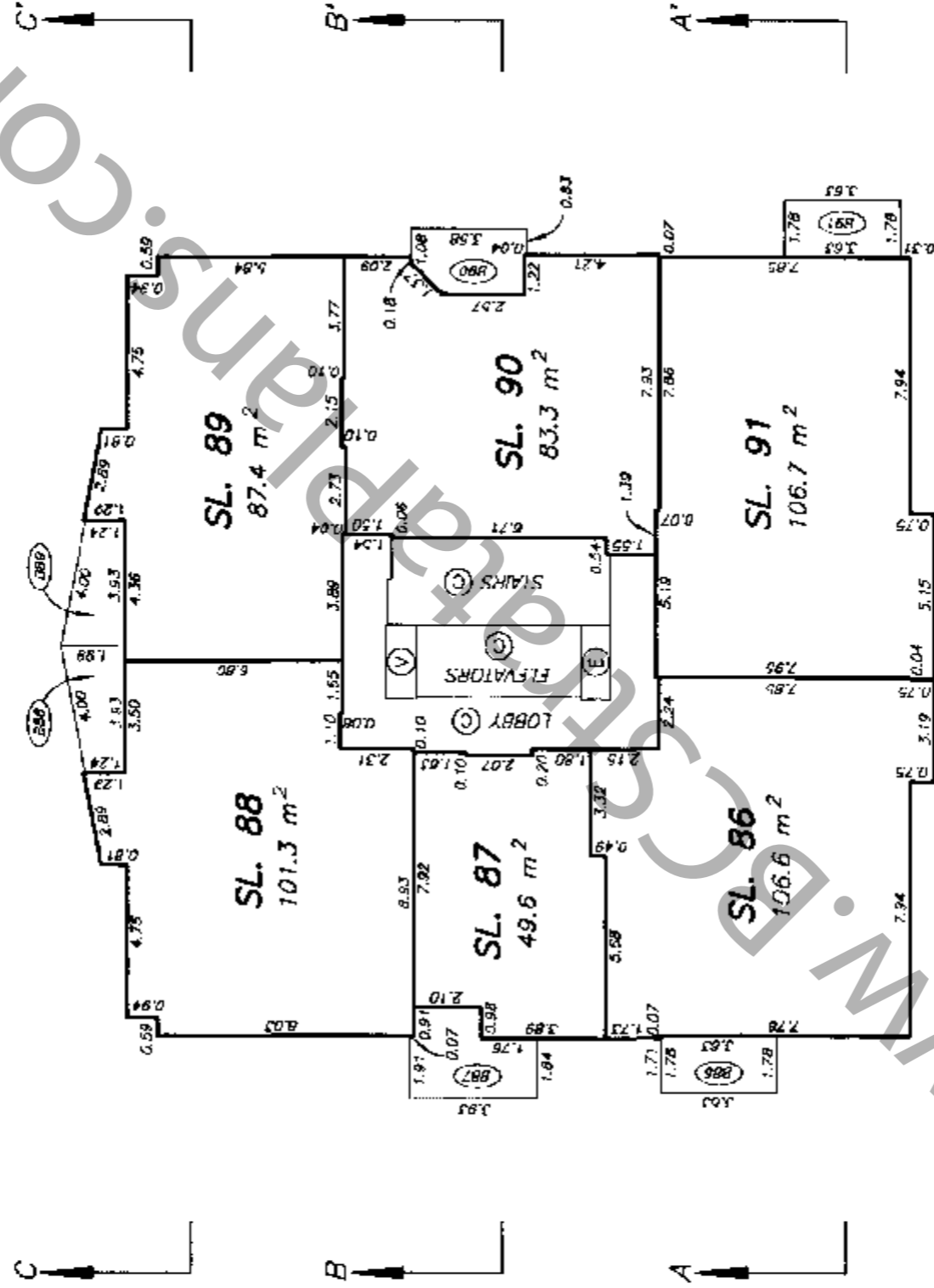
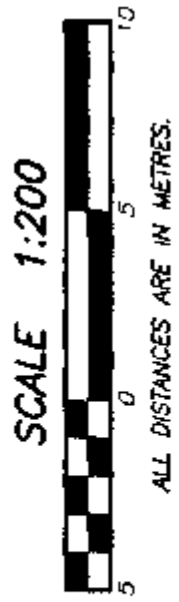
FOURTEENTH FLOOR PLAN
TOWER A

STRATA PLAN LMS 2093
PHASE 1



FIFTEENTH FLOOR PLAN
TOWER A

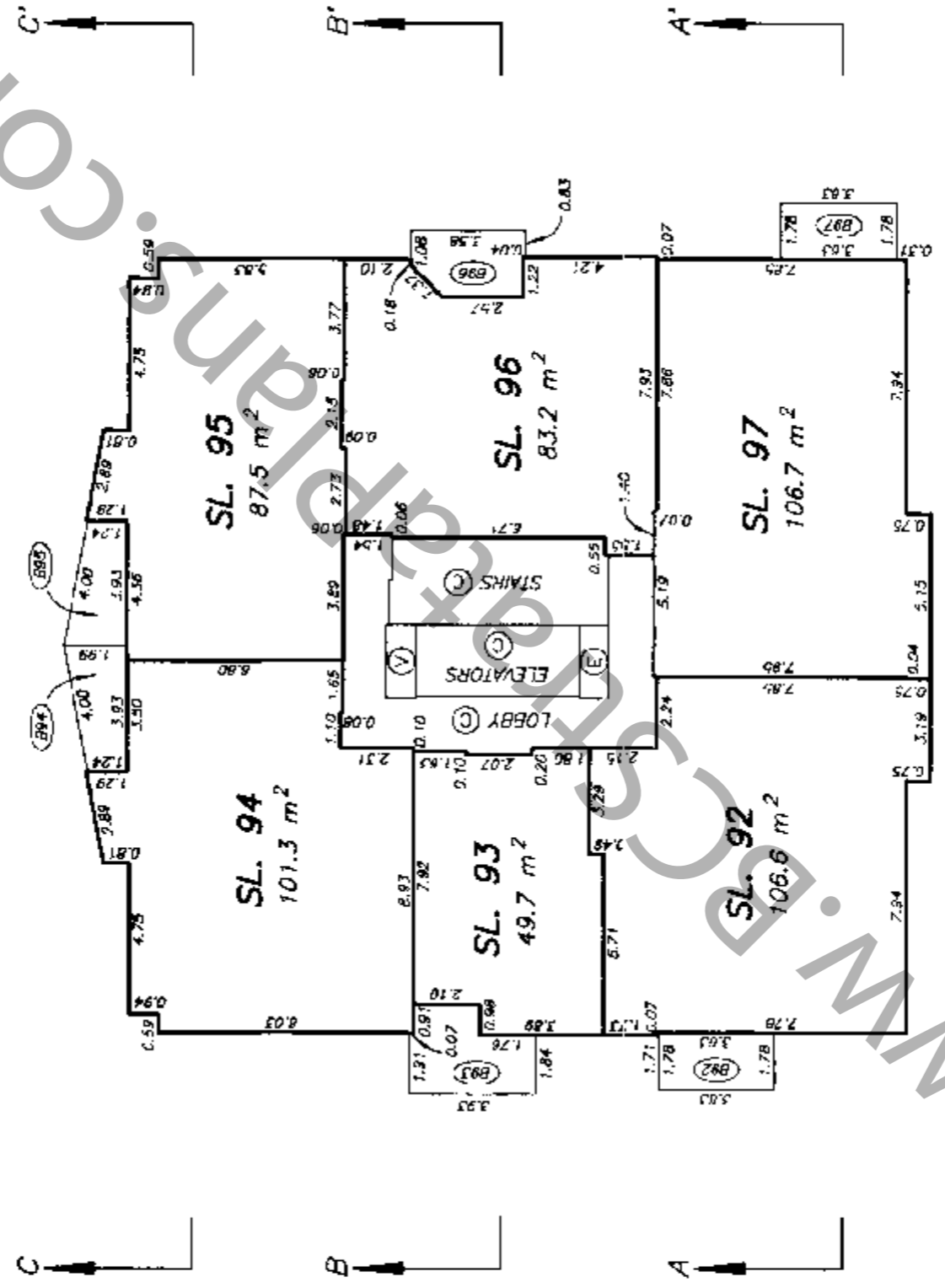
STRATA PLAN LMS 2093
PHASE 1



M.E.D.

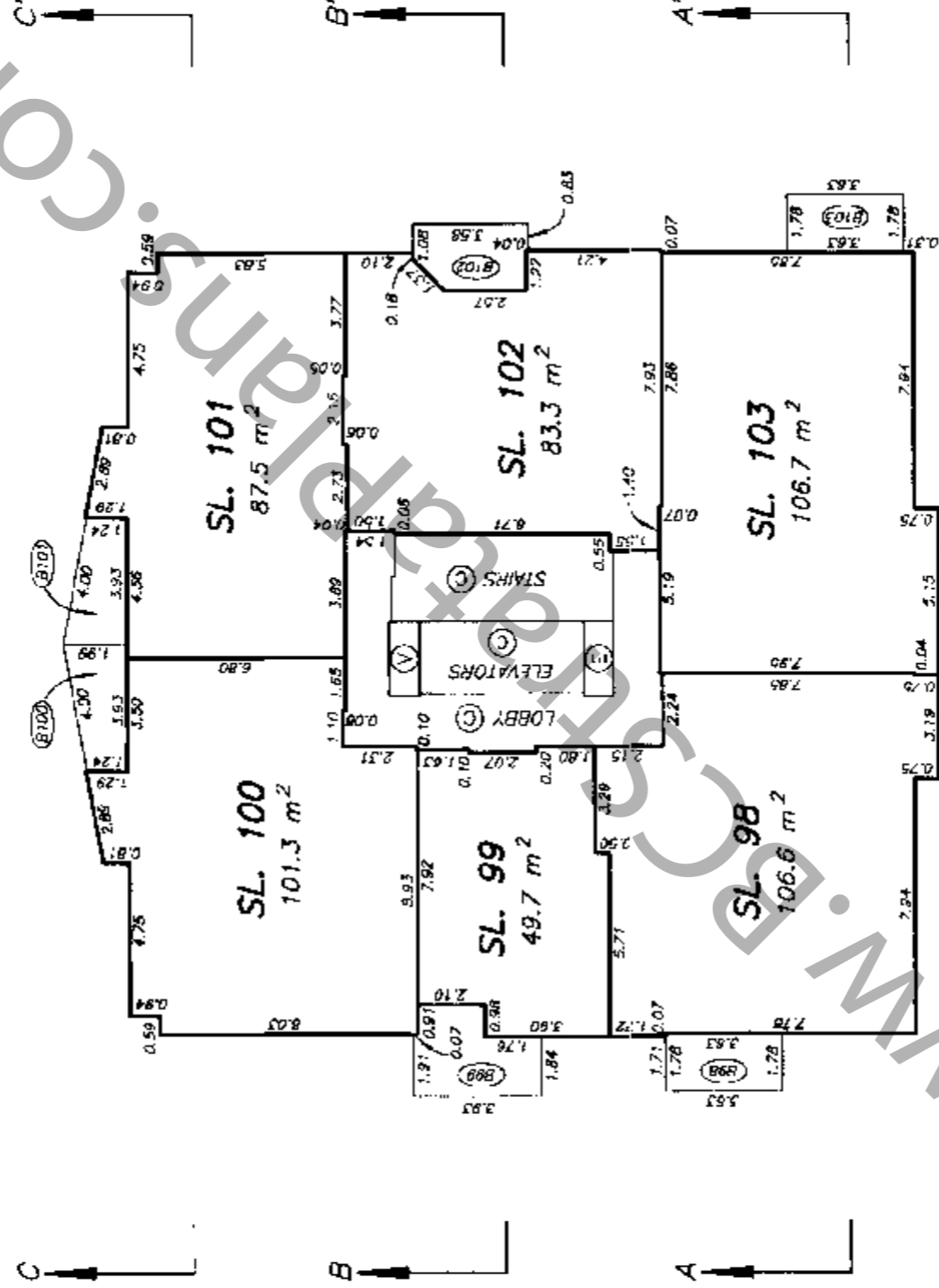
SIXTEENTH FLOOR PLAN
TOWER A

STRATA PLAN LMS 2093
PHASE 1



**SEVENTEENTH FLOOR PLAN
TOWER A**

**STRATA PLAN LMS 2093
PHASE 1**



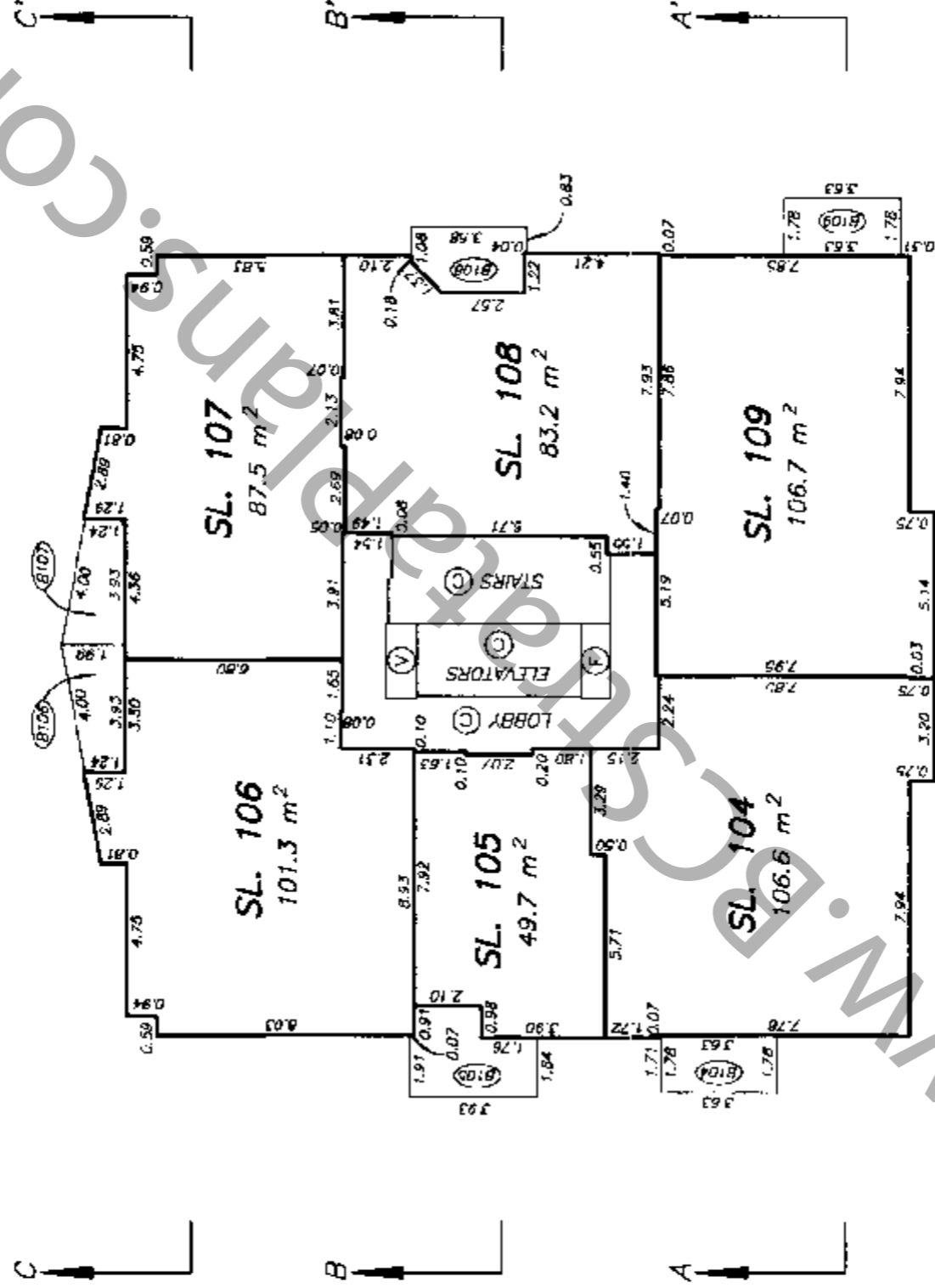
STRATA PLAN LMS 2093
PHASE 1

EIGHTEENTH FLOOR PLAN
TOWER A



SCALE 1:200

ALL DISTANCES ARE IN METRES.

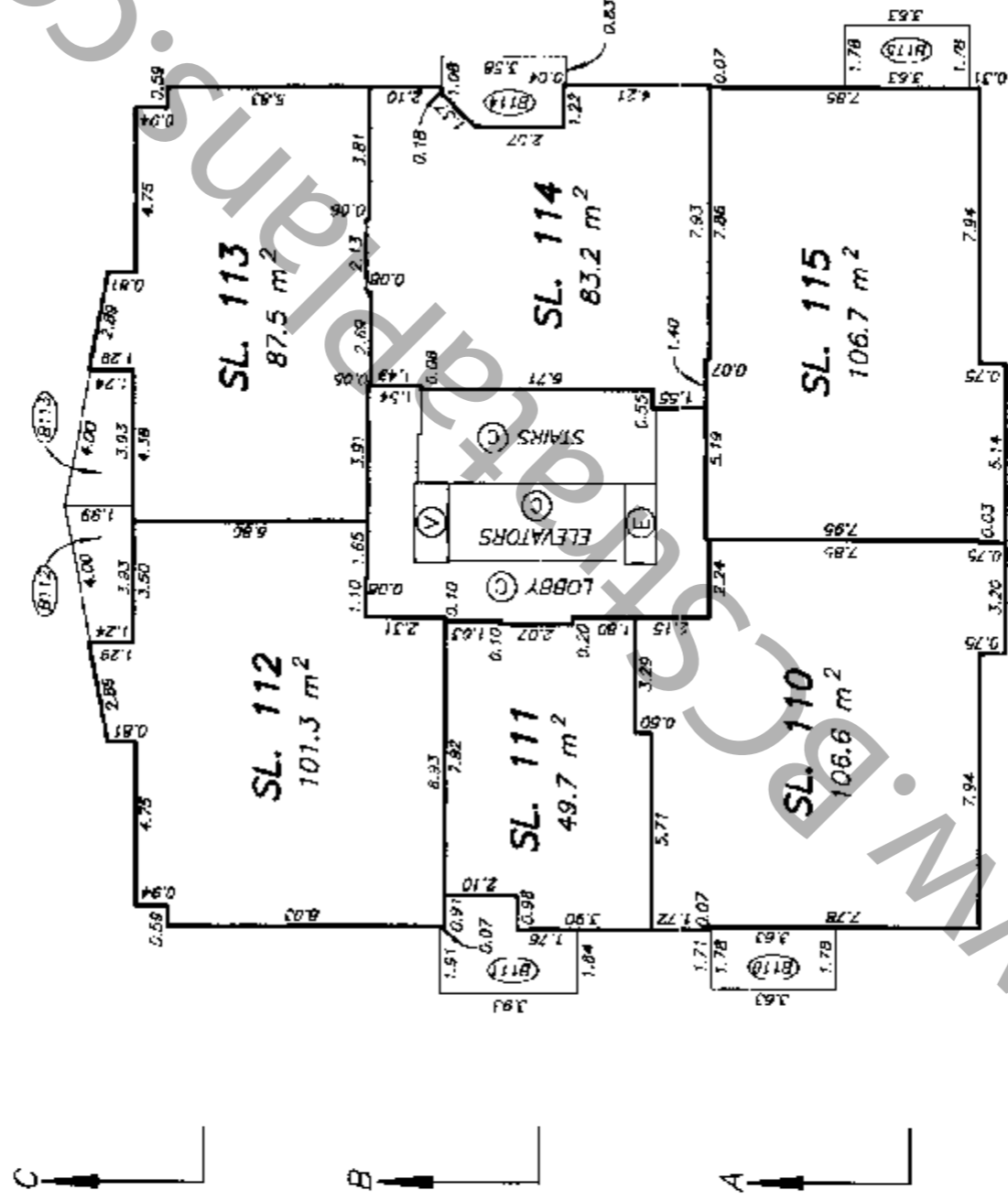


STRATA PLAN LMS 2093
PHASE 1

NINETEENTH FLOOR PLAN
TOWER A

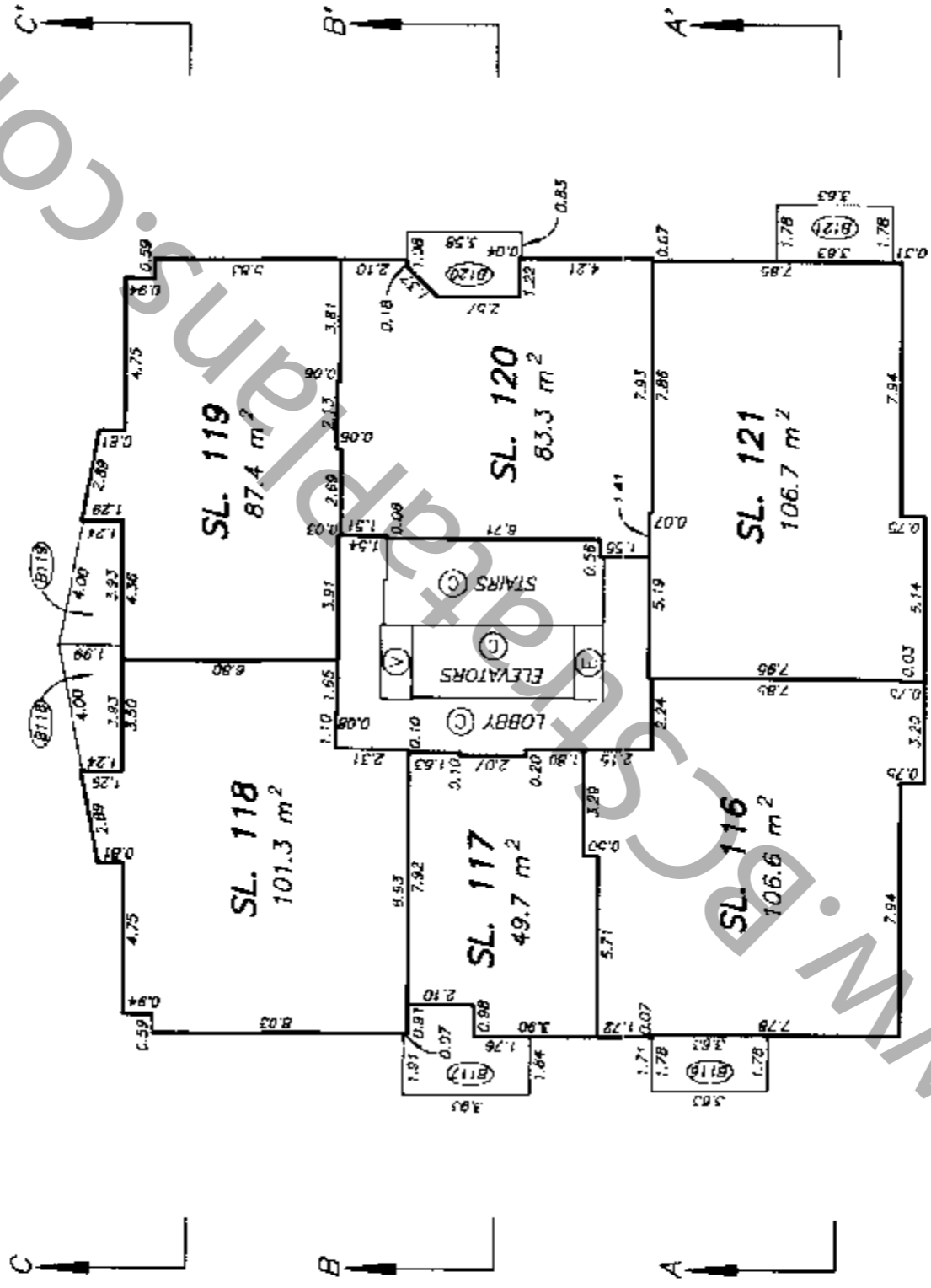


ALL DISTANCES ARE IN METRES.



TWENTIETH FLOOR PLAN
TOWER A

STRATA PLAN LMS 2093
PHASE 1

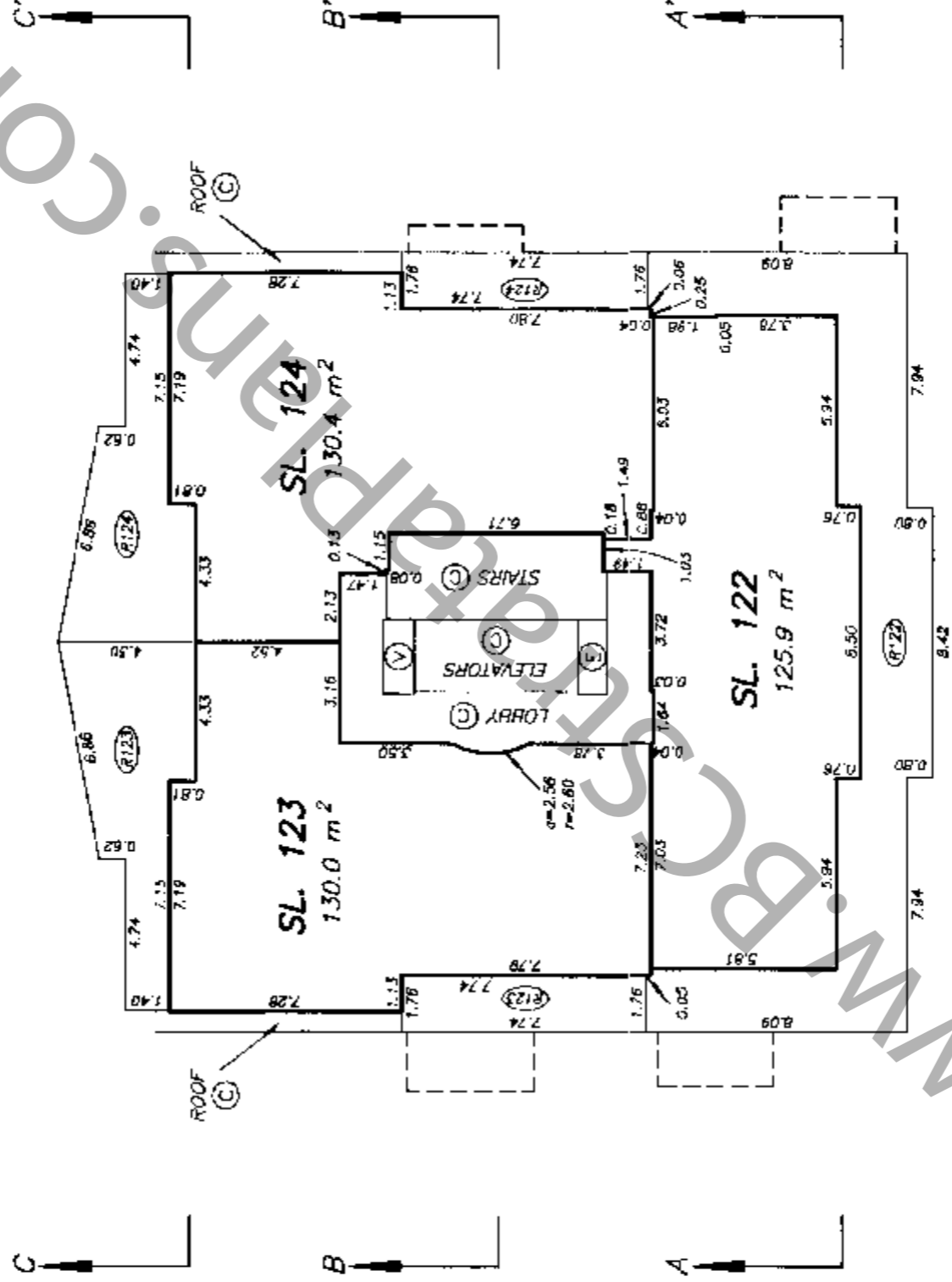


TWENTY FIRST FLOOR PLAN
TOWER A

STRATA PLAN LMS 2093
PHASE 1

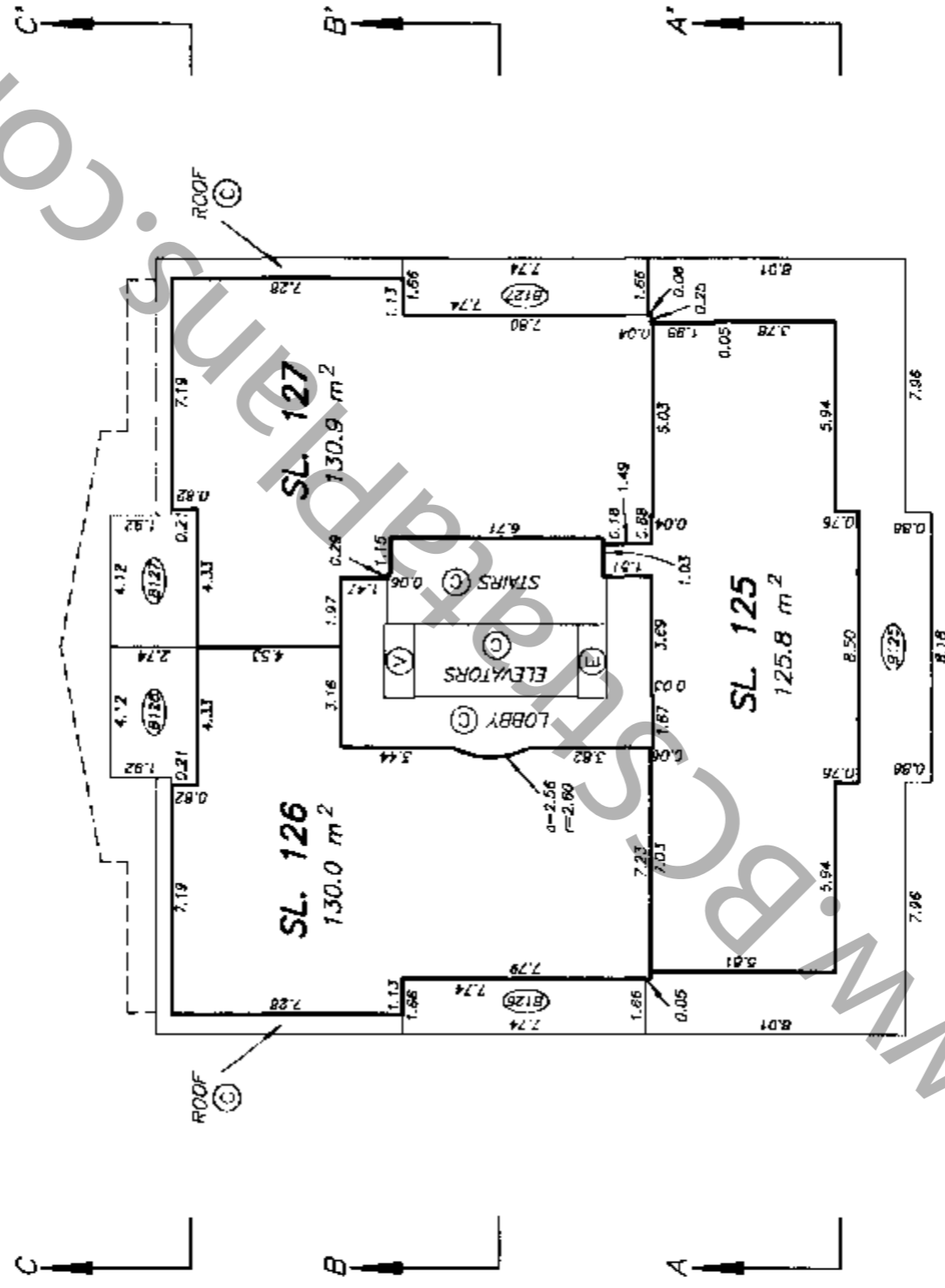


ALL DISTANCES ARE IN METRES.



TWENTY SECOND FLOOR PLAN
TOWER A

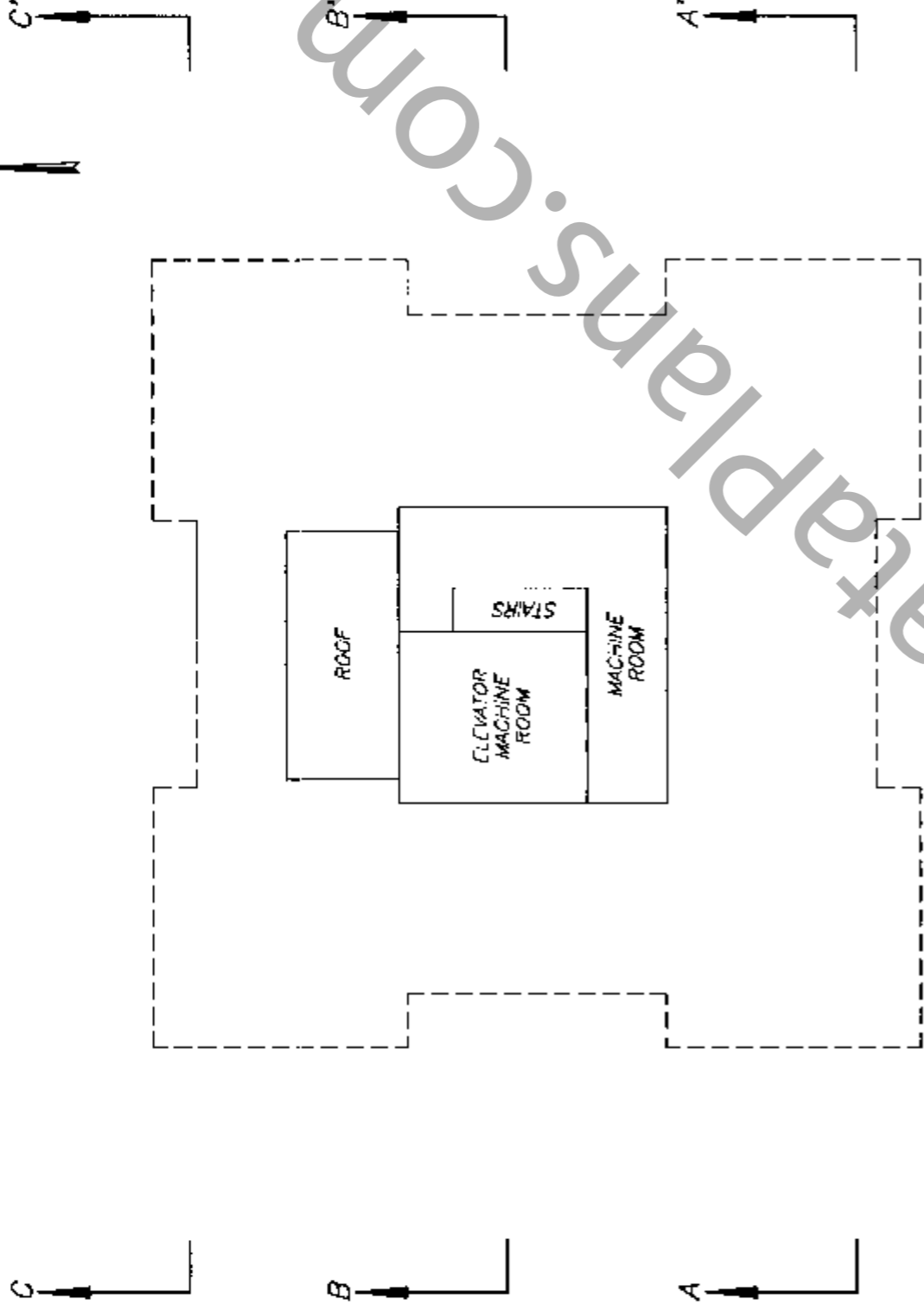
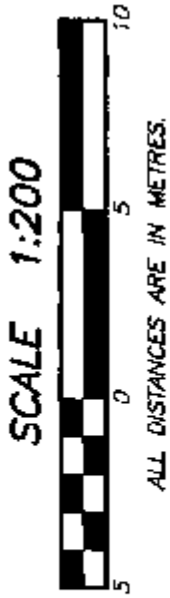
STRATA PLAN LMS 2093
PHASE 1



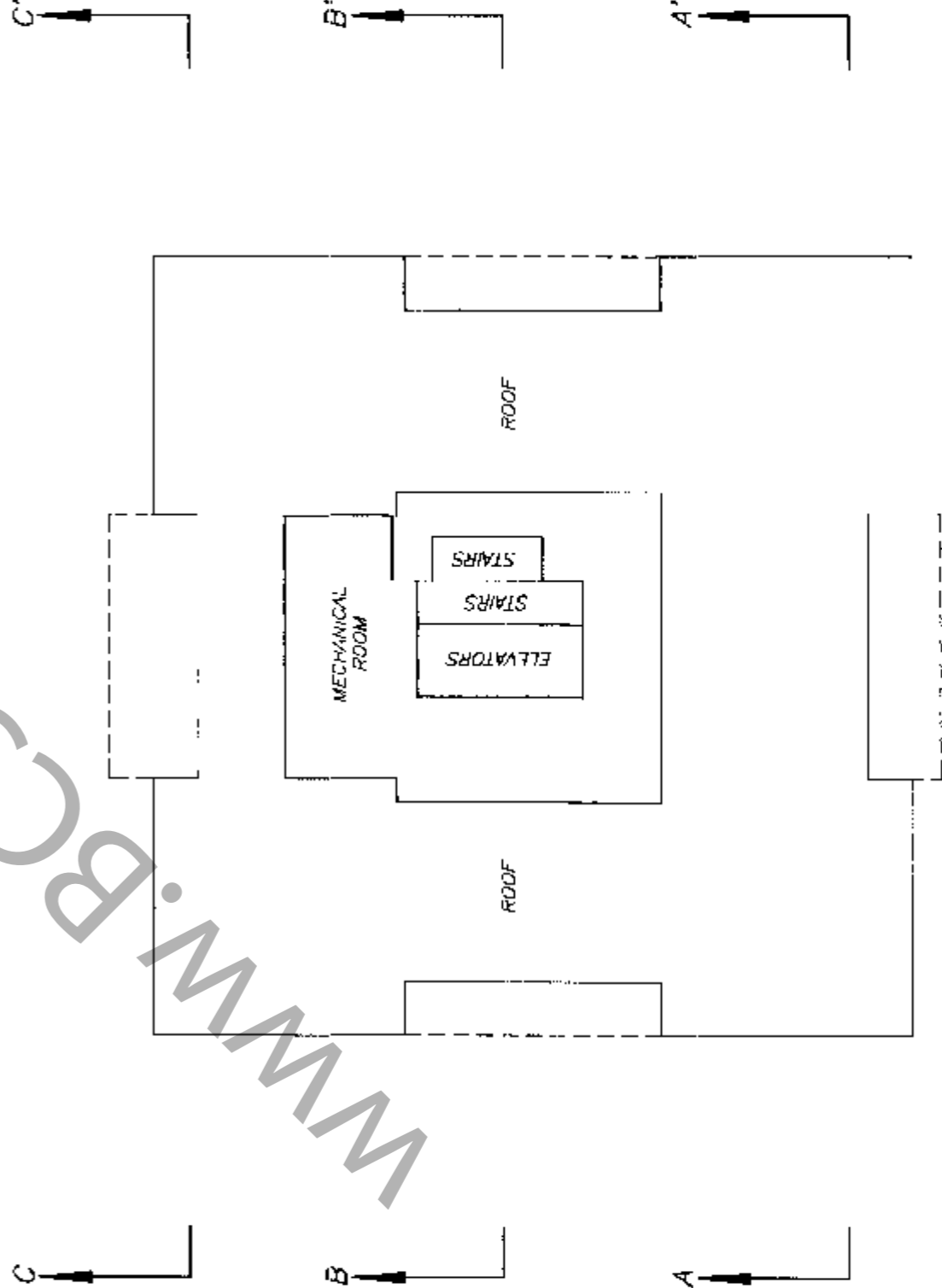
**ROOF PLANS
TOWER A**

**STRATA PLAN LMS 2093
PHASE 1**

NOTE : THESE FLOORS ARE ALL COMMON PROPERTY



TWENTY FOURTH FLOOR



TWENTY THIRD FLOOR

WWW.BOCSTRATAPLANS.COM

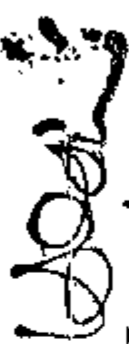
RECORD OF BY-LAWS
AND ORDERS ETC.

STRATA PLAN LMS 2093

FILING		DOCUMENT
NUMBER	DATE	NATURE AND PARTICULARS
BJ244562	17.08.1995	FORM 8 - NOTIFICATION OF CHANGE OF BYLAWS
BK133926	3.5.96	NOTIFICATION OF CHANGE OF BYLAWS
BL320003	Sept 17/97	change of Bylaws
		Bylaw Sheet Closed
		Search ALTO52 of BC OnLine for Current Information Online Reg. 7695

**DEALINGS AFFECTING THE
COMMON PROPERTY**

STRATA PLAN LMS 2093

Common Property Sheet Closed 8/1/12
 Search ALTOS2 or BC-Online for
 Current Information, BC Reg. 76/93

 LINDA LUSHEA, Registrar
 VANCOUVER DOCUMENTS Land Title Districts

REGISTRATION NUMBER	DATE	DATE	NATURE AND PARTICULARS
			THIS TITLE MAY BE AFFECTED BY A PERMIT UNDER PART 29 OF THE MUNICIPAL ACT. SEE B6310869 EXPIRES N/A
			THIS TITLE MAY BE AFFECTED BY A PERMIT UNDER PART 29 OF THE MUNICIPAL ACT. SEE B6171944
			THIS TITLE MAY BE AFFECTED BY A PERMIT UNDER PART 29 OF THE MUNICIPAL ACT. SEE B6171945
HERE TO IS OF LOT 9	ANNEXED PLAN LMP3367	EASEMENT	BH158694 OVER PART (PLAN LMP16519)
HERE TO IS OF LOT 9	ANNEXED PLAN LMP3367	EASEMENT	BH158697 OVER PART (PLAN LMP16520)
HERE TO IS LOT 9	ANNEXED PLAN LMP3367	EASEMENT	BH172007 OVER (PLAN LMP16660)
BFS1234	14.02.1992		STATUTORY RIGHT OF WAY DISTRICT OF SURREY PLAN LMP3368 INTER ALIA
BFS1254	14.02.1992		COVENANT DISTRICT OF SURREY L.T.A. SECTION 215 INTER ALIA
BH110353	31.03.1994		STATUTORY RIGHT OF WAY BC TEL PLAN LMP15929 INTER ALIA
BH173999	11.05.1994		EASEMENT APPURTENANT TO STRATA LOTS 1 TO 150 STRATA PLAN LMS 1383, THE COMMON PROPERTY OF STRATA PLAN LMS 1383 AND LOT 9 EXCEPT PHASE 1, STRATA PLAN LMS 1383, PLAN LMP3367 INTER ALIA

See page 2

Wood DEALINGS AFFECTING THE COMMON PROPERTY

LINDA J. O'SHEA, Registrar
Vancouver Westminster Land Title Districts

REGISTRATION		DATE	NATURE OF PARTICULAR	DOCUMENT
NUMBER				
BJ272947		12-09-1995		Easement Part Plan LMP25199 Appurtenant to lot 5 Except Firstly Phase one Strata Plan LMS 2093, NWD Plan LMP 3367
BJ272948		12-09-1995		Easement Appurtenant to lot 5 Except Firstly Phase one Strata Plan LMS 2093, NWD Plan LMP 3367
BJ272949		12-09-1995		Easement Appurtenant to lot 5 Except Firstly Phase one Strata Plan LMS 2093, NWD Plan LMP 3367
BJ272950		12-09-1995		Easement Part Plan LMP 25201 Appurtenant to lot 5 Except Firstly Phase one Strata Plan LMS 2093, NWD Plan LMP 3367
BJ272951		12-09-1995		Easement Appurtenant to lot 5 Except Firstly Phase one Strata Plan LMS 2093, NWD Plan LMP 3367
BJ272952		12-09-1995		Easement Part Plan LMP 25200 Appurtenant to lot 5 Except Firstly Phase one Strata Plan LMP 2093, NWD Plan LMP 3367
BJ272953		12-09-1995		Easement Appurtenant to lot 5 Except Firstly Phase one Strata Plan LMS 2093, NWD Plan LMP 3367

